

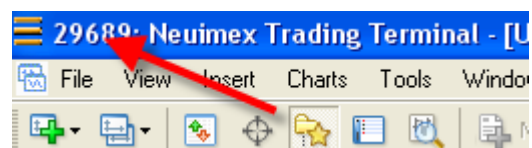
## How to use EDEA (Enable Disable Expert Advisor)

Version 1.4

EDEA is made with Macro Scheduler (8.0.3) and is free to use. With EDEA you can trigger the “Expert Advisors” button in MT4 in order to prevent the EA to be active during certain periods of the day (for example, don’t trade between 11.00 pm and 8.00 pm or don’t trade during News events etc.). You can use 7 stop and start times a day. EDEA is using an INI file in which you can give stop and start times for a whole week.

Place the file EDEA4.ini wherever you like. When EDEA starts it will ask you for the path of the INI file.

If not already done so start MT4. In the Window Title of MT4 you can find your accountnumber:



You have to place the accountnumber in the ini-file under the Section [Account] after the Entry “YourAccount”.

```
[Account]
YourAccount=29689
```

EDEA is doing no more and no less then triggering the “Expert Advisors” button in MT4. So if your first time is a start time the button should be disabled.

For every day of the week you will find the following entries in the INI file (these are for Wednesday):

So in this example we use 4 regular start and stop times and 1 stop and start time for a News Event.

**For every day you have to start with a start time and end with stop time.**

If you want to keep the EA active at night your latest stop time will be 23:59 and the first start time for the following day is 00:01

Do not remove the zero's

```
[4]
WEDNESDAY

Start and stoptimes EA
=====
EASStart1      =08:15
EASStop1       =12:00
EASStart2      =13:10
EASStop2       =15:08
EASStart3      =16:12
EASStop3       =18:16
EASStart4      =19:05
EASStop4       =22:10

Start and stoptimes News Events
=====
NEStop1        =17:00
NEStart1       =17:30
NEStop2        =0
NEStart2       =0
NEStop3        =0
NEStart3       =0
```

After that start EDEA.exe. At the right-bottom you will see a blinking icon:



You can terminate EDEA with SHIFT + ESC.