

# Portfolio No. 1:

## 20-pips-EA-portfolio set

Name of EA: 20PipsExpert\_v2.

Name of pre-set files:

20pips\_v2.1\_m15\_nomm\_audusd.set

20pips\_v2.1\_m15\_nomm\_eurusd.set

20pips\_v2.1\_m15\_nomm\_gbpusd.set

20pips\_v2.1\_m15\_nomm\_usdchf.set

20pips\_v2.1\_m15\_nomm\_usdjpy.set

Name of statements files:

20pips\_v2.1\_m15\_nomm\_audusd\_backtesting.zip

20pips\_v2.1\_m15\_nomm\_gbpusd.zip

20pips\_v2.1\_m15\_nomm\_usdchf.zip

20pips\_v2.1\_m15\_nomm\_usdjpy.zip

20pips\_v2.1\_m15\_nomm\_eurusd.zip

Money Management used in portfolio No. 1: N/A (lot size may be increased/decreased manually)

Recommended starting deposit size: from 10,000 to 25,000

Recommended starting lot size: 1 lot.

Timeframe: M15.

Currencies: EURUSD, GBPUSD, USDCHF, USDJPY, AUDUSD.

Trading system description: <http://www.forex-tsd.com/expert-advisors-metatrader-3/2141-20-pips-system.html>

All the results below are based on backtesting with every tick modeling quality 90%.

Prepared by: Newdigital

All the data was sorted by year and pair so please find the results for 2001 for all the pairs mentioned above (except AUDUSD). We may see from the image below that this portfolio set did 2320 pips in total this year. For risk, drawdown and so on please see the testing results.

In 2002 system did 110 pips only (without AUDUSD).

System did 450 pips in 2003 (without AUDUD as well).

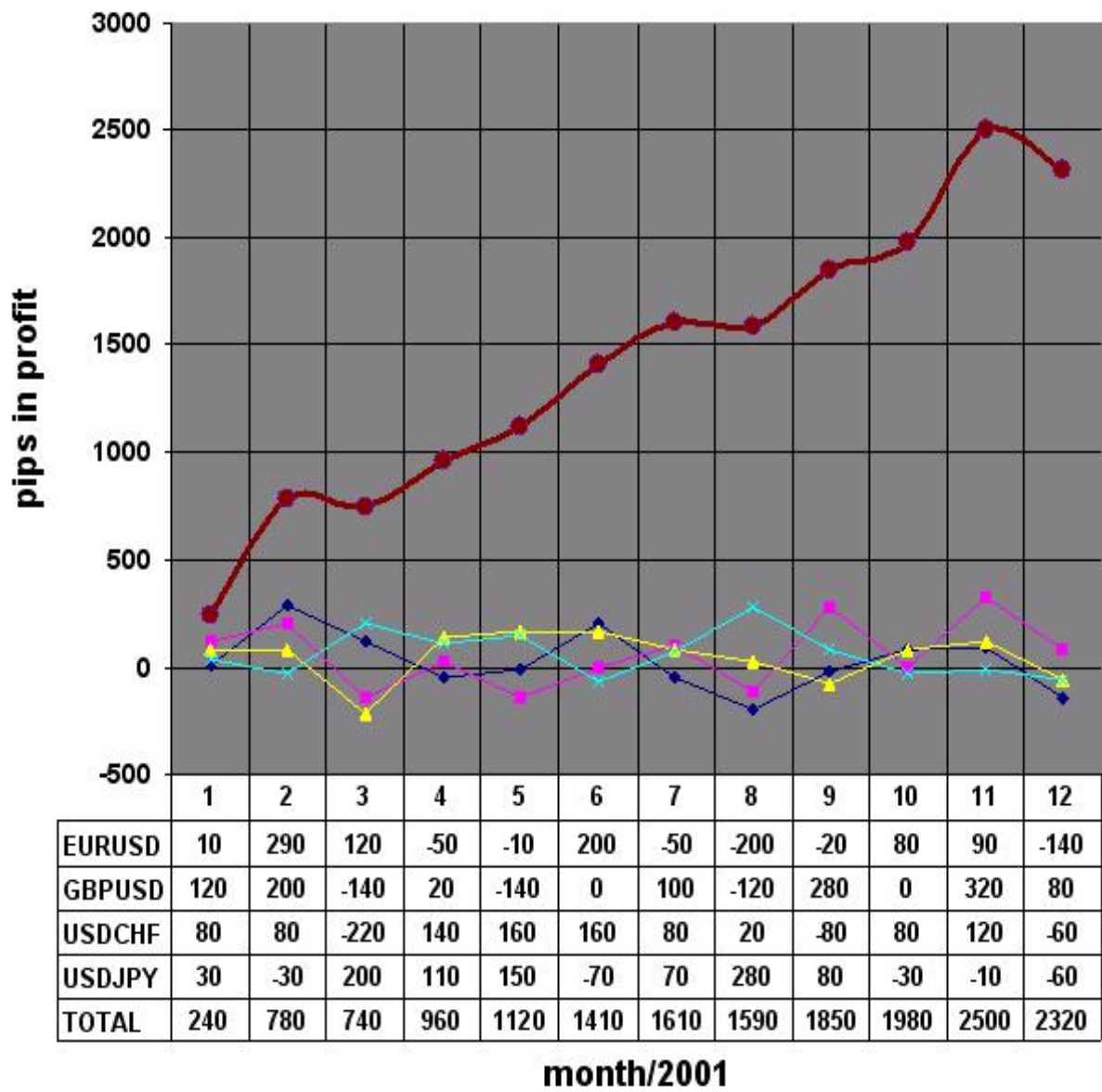
1680 pips for 2004 (see image).

2150 pips in 2005. This year was profitable for this system.

And 1880 pips for half a 2006 year till end of the May).

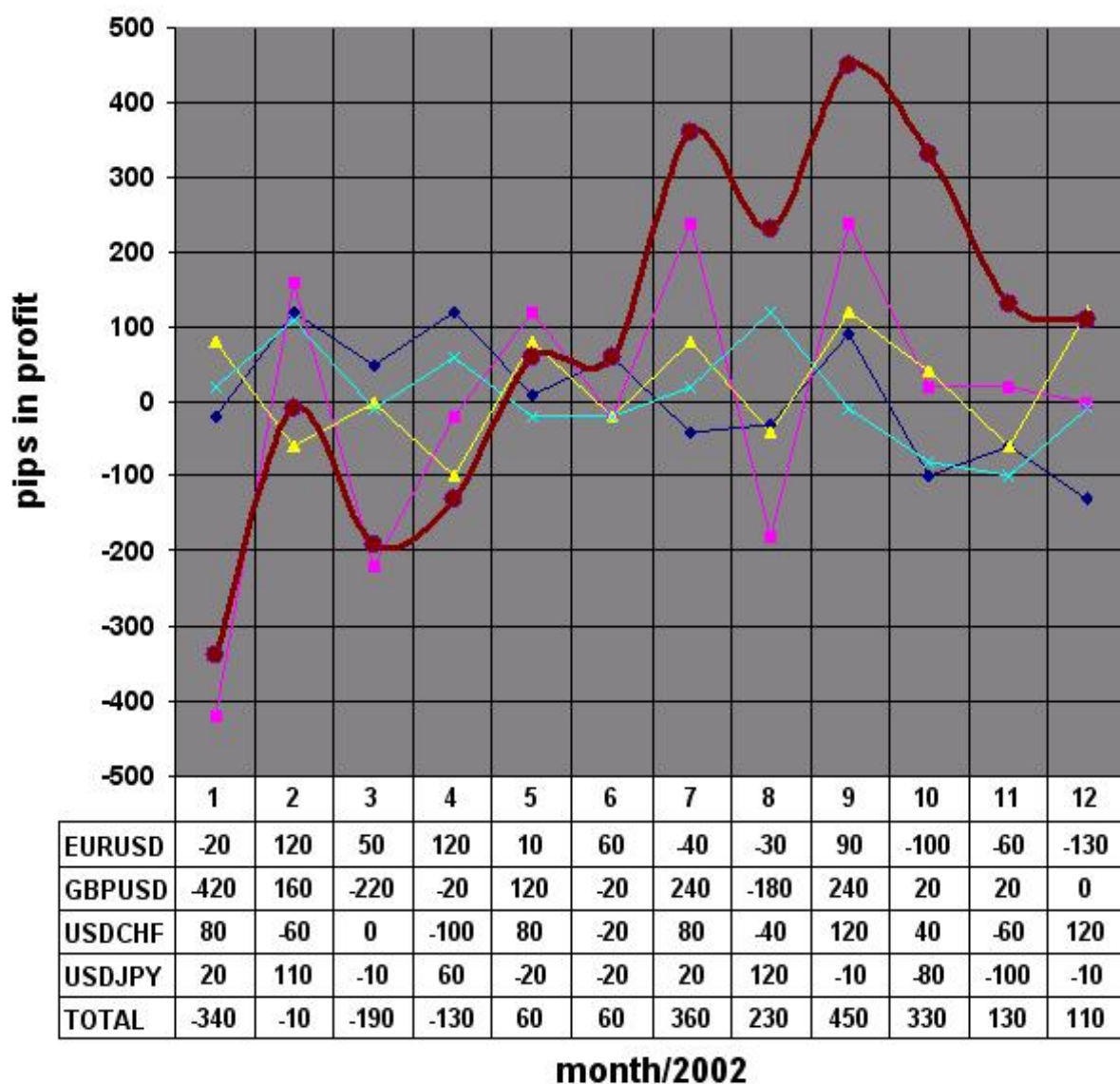
And the final image is illustrating the yearly profit from this system summarized by year.

# 2001

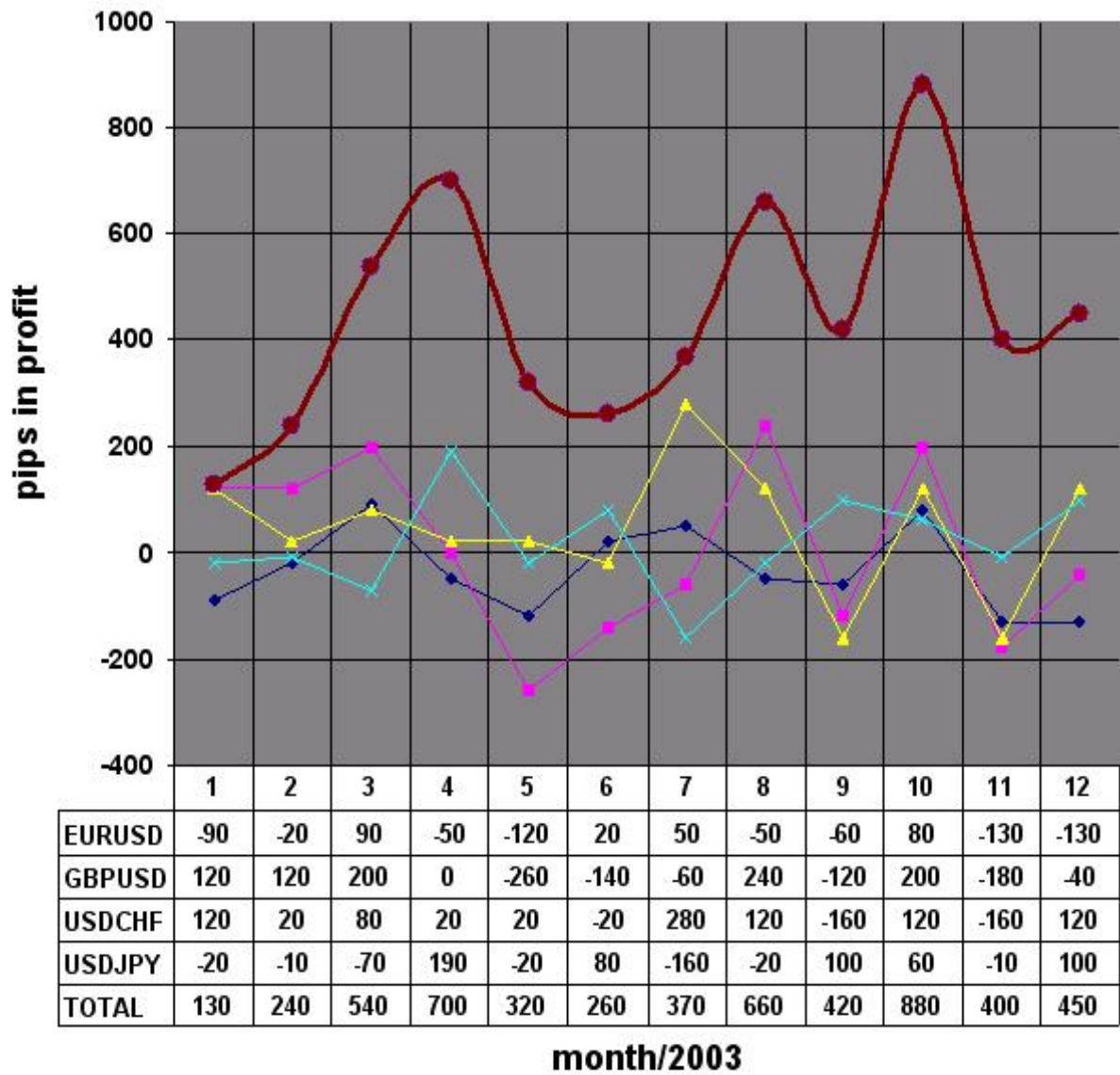


◆ EURUSD    ◆ GBPUSD    ◆ USDCHF    ◆ USDJPY    ◆ TOTAL

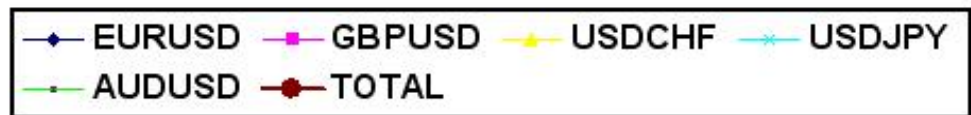
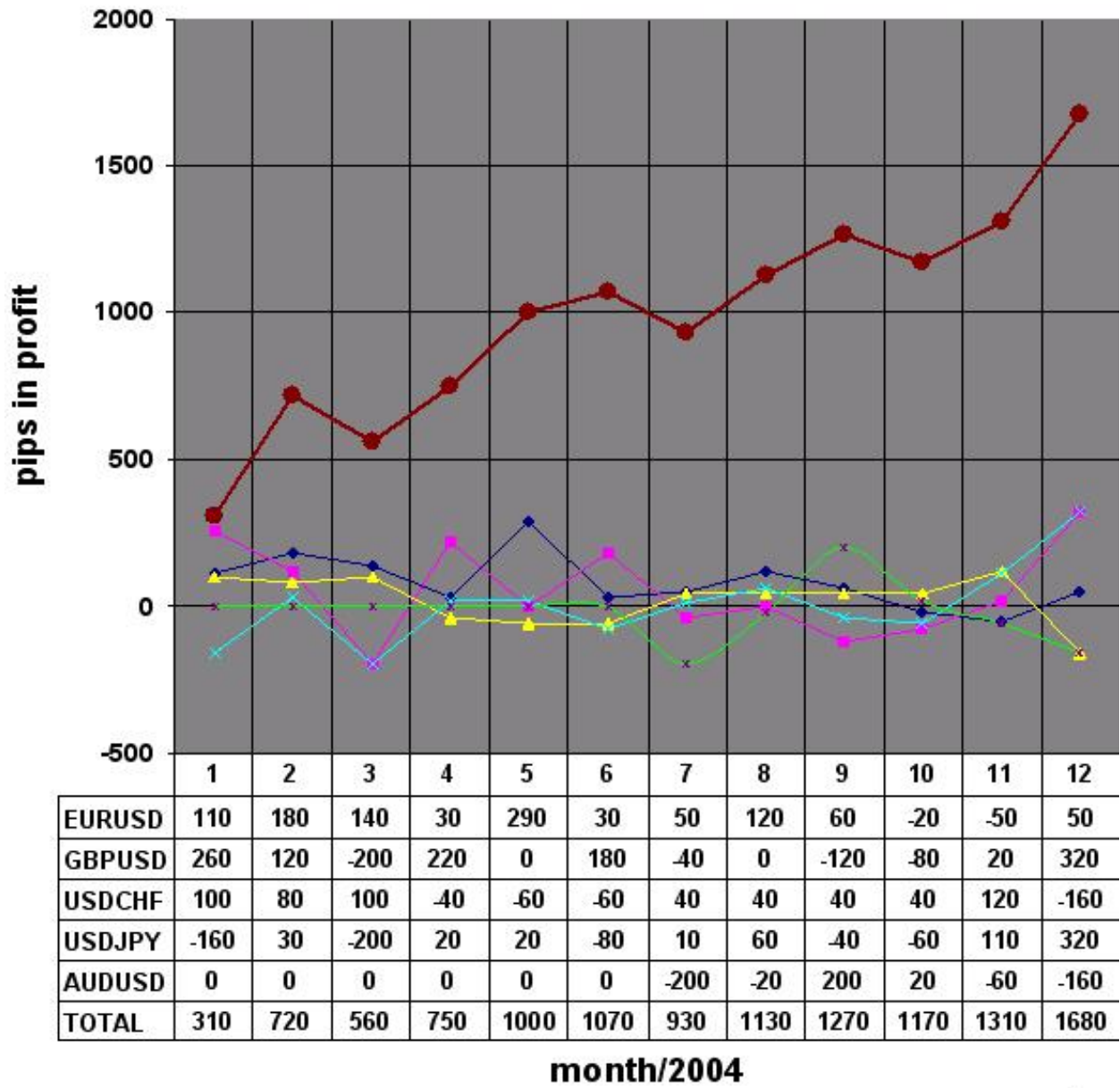
## 20pips EA 2002



## 20pips EA 2003

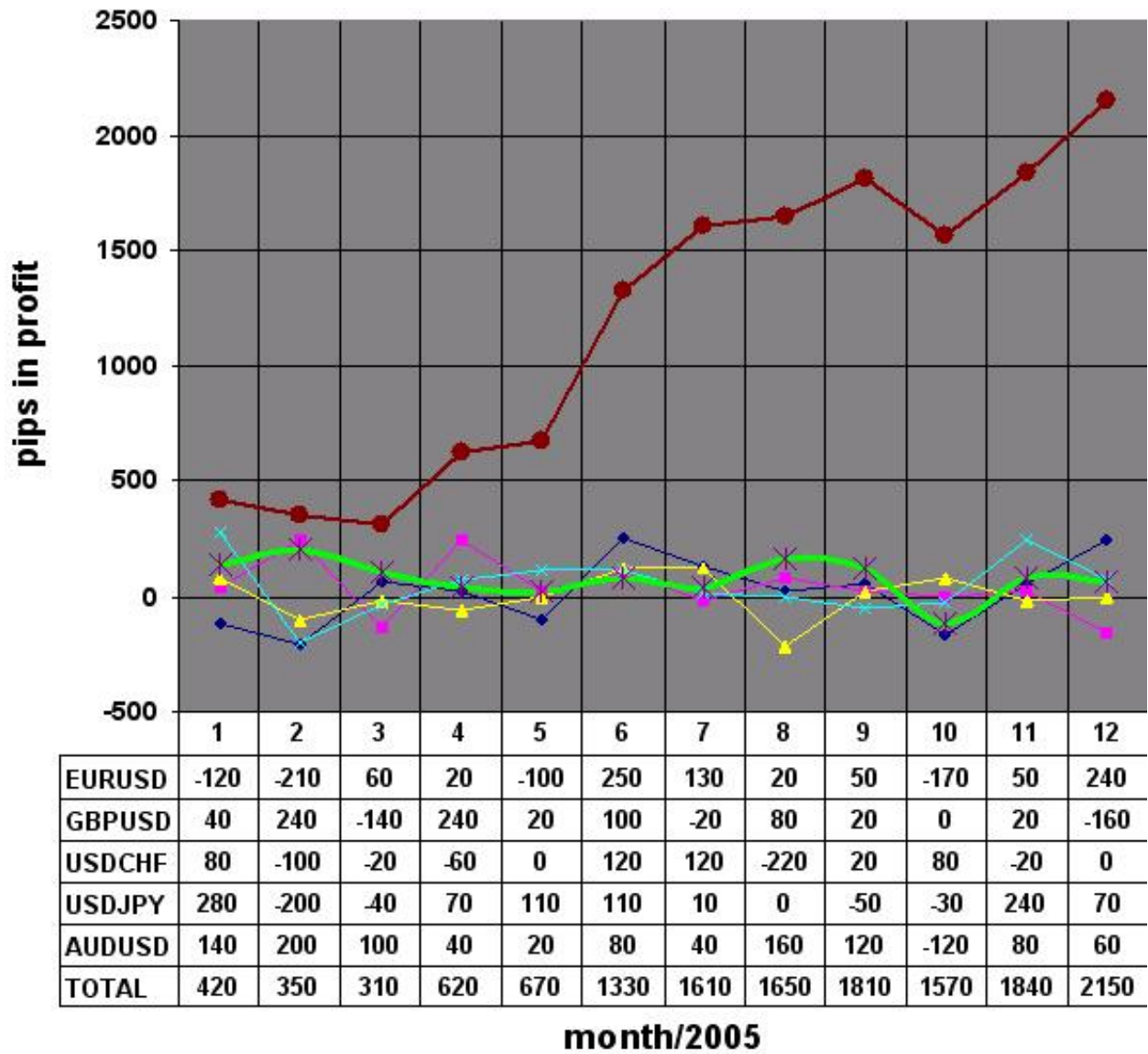


## 20pips EA 2004





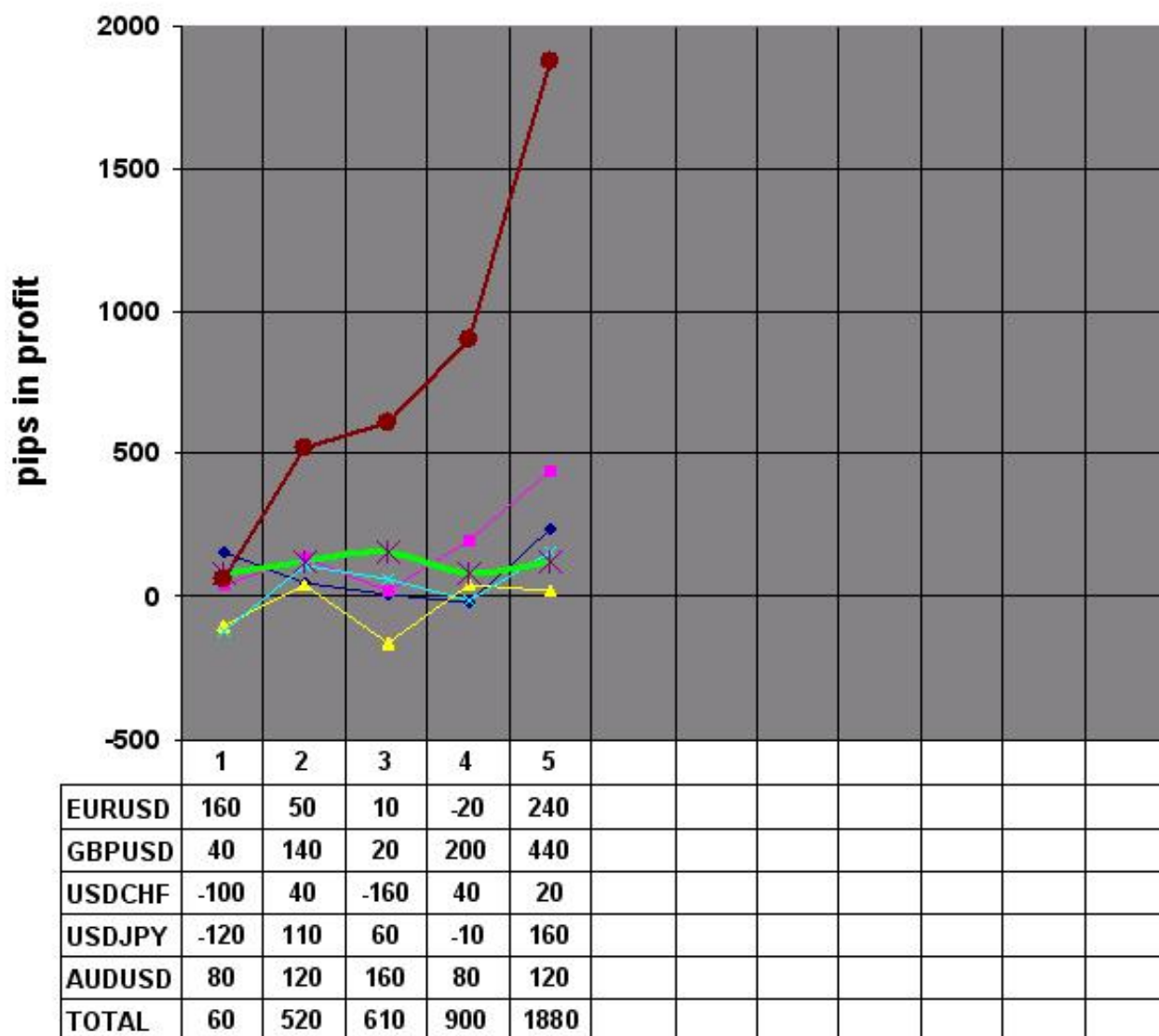
## 20pips EA 2005



EURUSD	-120	-210	60	20	-100	250	130	20	50	-170	50	240
GBPUSD	40	240	-140	240	20	100	-20	80	20	0	20	-160
USDCHF	80	-100	-20	-60	0	120	120	-220	20	80	-20	0
USDJPY	280	-200	-40	70	110	110	10	0	-50	-30	240	70
AUDUSD	140	200	100	40	20	80	40	160	120	-120	80	60
<b>TOTAL</b>	<b>420</b>	<b>350</b>	<b>310</b>	<b>620</b>	<b>670</b>	<b>1330</b>	<b>1610</b>	<b>1650</b>	<b>1810</b>	<b>1570</b>	<b>1840</b>	<b>2150</b>



## 20pips EA 2006

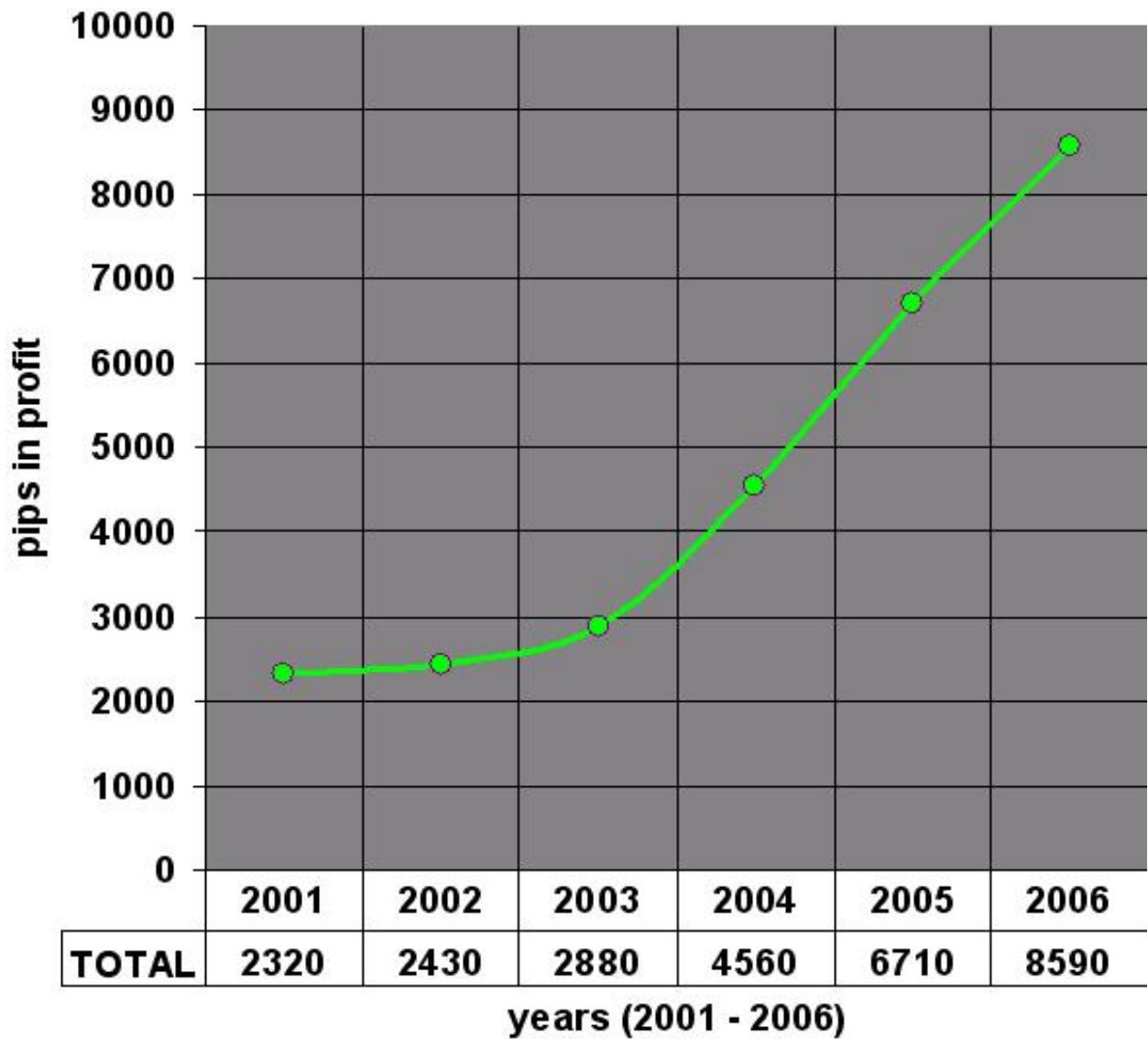


month/2006





**20pips EA**  
**2001 - 2006**



● TOTAL