



# AMP™ Indicator

Rel. 0.0007

for MetaTrader 4 Platform

## AMP Configuration Manual

[www.TradingArsenal.com](http://www.TradingArsenal.com)

[www.AMPZone.org](http://www.AMPZone.org)

\*\*\*\*\* **Main ZZ params** \*\*\*\*\*

**iextZZ\_MaxBars**

Number of chart bars indicator considers when looking for a pattern

**iextZZ\_MinSwing**

Minimal swing size (in pips) that indicator considers when building an internal ZigZag used for pattern recognition. Used only when **bextMinSwingATRmode** is false.

**bextMinSwingATRmode**

If true, **iextZZ\_MinSwing** is not used, instead minimal swing size is calculated based on ATR from last 1000 bars multiplied by **iextMinSwingATRrate**.

**iextMinSwingATRrate**

Used as multiplication when ATR is used to calculate minimal swing size

Example for ATRrate=2



Example for ATRrate=3



\*\*\*\*\* **Pattern recognition params** \*\*\*\*\*

**dextMaxDeviation**

Calculation precision. Maximum allowed difference when calculation price and/or time proportions of the pattern.

**bextEmergingPatterns**

If true, emerging patterns will be presented

**double dextEmergingPatternPerc**

Percentage of pattern completion before it is recognized as emerging pattern.

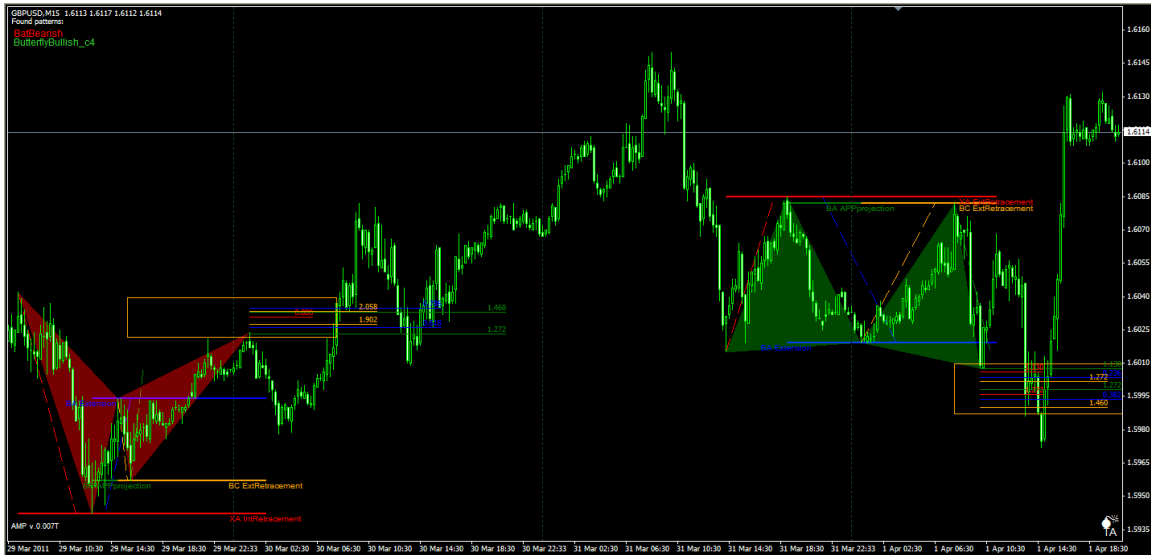
**ixtPatternMinSwingSize**

Minimum number of bars in a swing to be considered proper pattern swing.

## **bCheck\_IsAfterPatternOK**

if true, pattern is displayed on the chart only if is in agreement with the price move following the pattern.

Example when set to false:



\*\*\*\*\* **What to draw** \*\*\*\*\*

## **bextDrawZZLine**

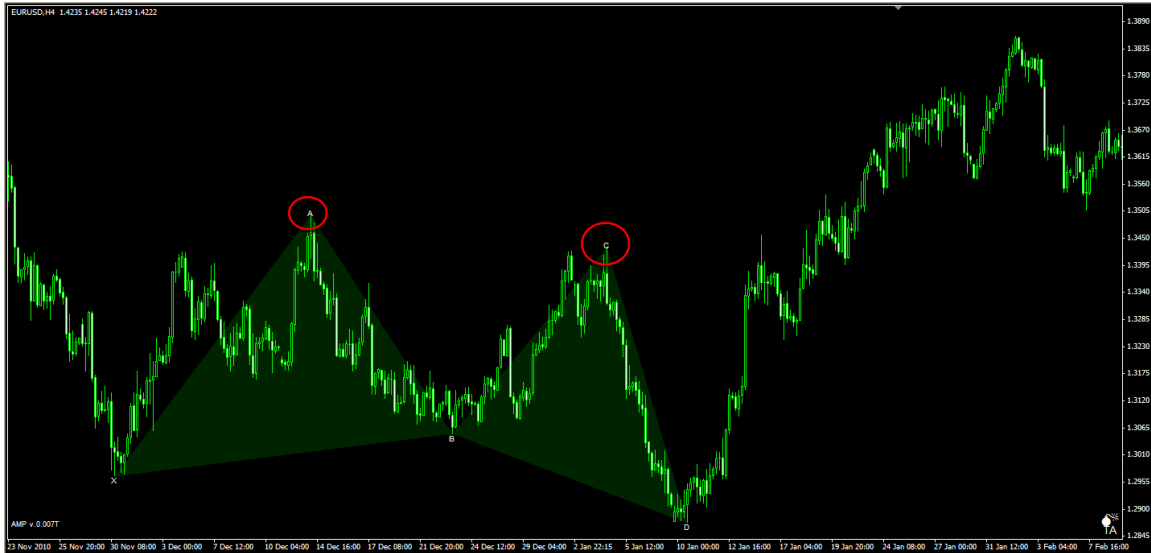
If true, ZigZag line will be drawn. Used rather for defining new patterns or checking configuration.

## **cextZZ\_LineColor**

Color of ZigZag line

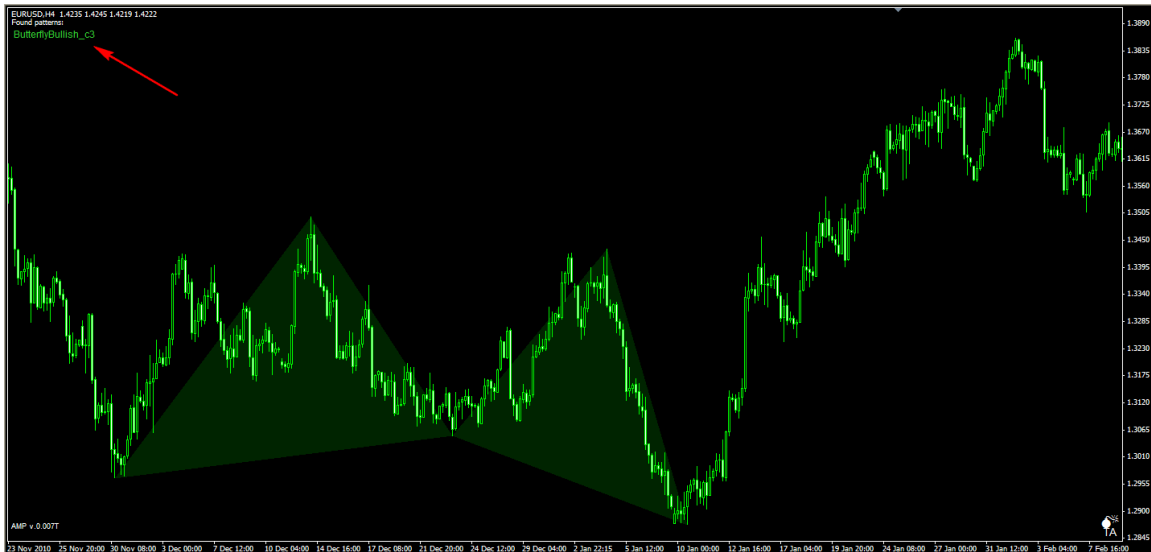
## bextDrawDescPoints

Draw pattern description points.



## bextDrawFoundPatternsList

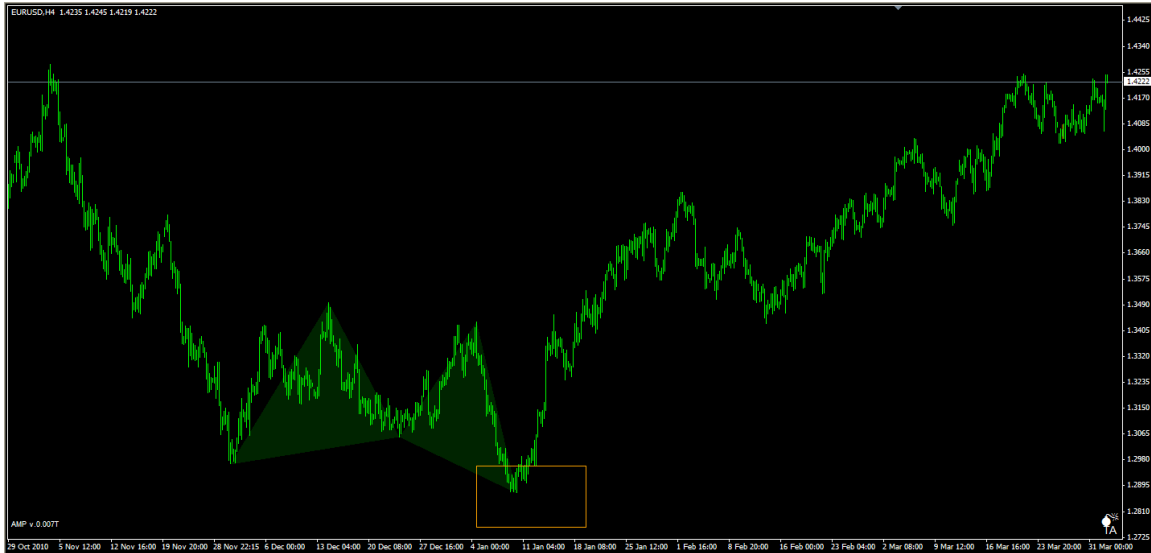
Display list of found patterns



# AMP™ by Trading Arsenal

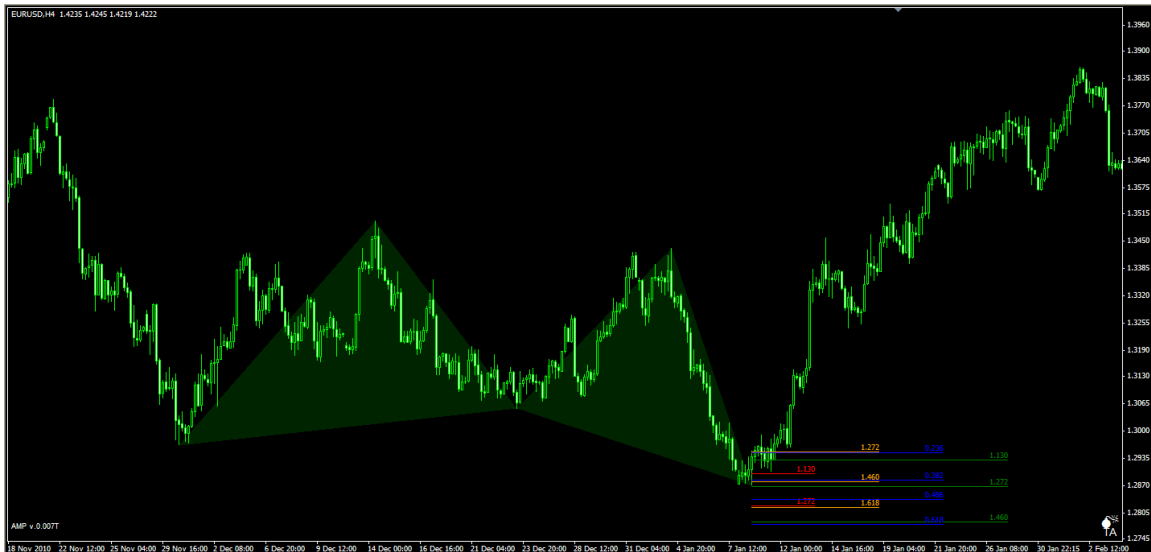
## extern bool bextDrawPRZRect

Orange rectangle is drawn based on pattern price and time configurations.



## bextDrawPRZLines

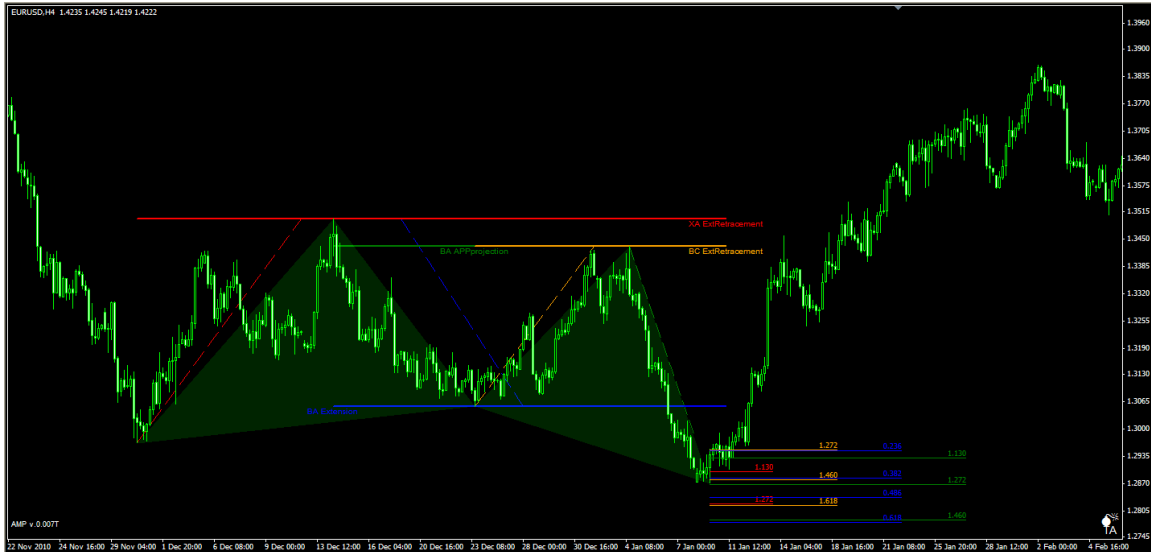
If true, internal and external retracements, APP projections and expansions are automatically displayed, if specified in the pattern configuration.



# AMP™ by Trading Arsenal

## bextDrawPRZExplain

if true, and bextDrawPRZLines is true, this will display additional info how the internal & external retracements, projections and expansions are measured.



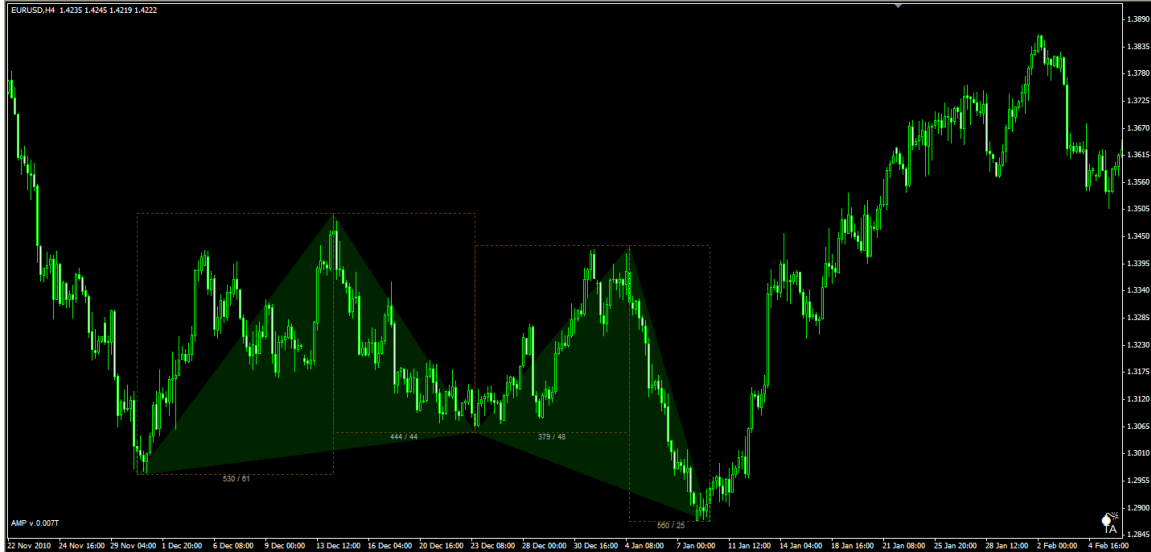
## bextDrawRelationLine

If true, displays info about relations/retracements between pattern swings.



## bextDrawSwingBox

If true, displays info about price and #bars for each swing.



## cSwingBoxColor

Color of the boxes.

## cSwingBoxDescColor

Color of the box descriptions



## **bextDrawDailySplit**

If true, additional vertical lines are displayed that present the beginning of each day (00:00 candle)



## **cextDailySplitColor**

Color of the split line

## **iextDrawDailySplitPeriod**

Numer of days in the history that are marked by the split lines.

### **\*\*\*\*\* Config files location \*\*\*\***

#### **sxtMarketPatternsDir**

Default "AMPMarketPatterns/". Specifies the location of config file and pattern configuration files.

#### **sxtConfigFile**

Default "AMP.config". Specifies the name of the file with all patterns configuration files.

**\*\*\*\*\* Sound Alarms ON/OFF \*\*\*****bextSoundAlertON**

If true, MT4 Alarm message box & sound will notify user about new pattern found.

**sextInfoPatternSoundFile**

Default "news.wav". File to be played to notify the user about new pattern found.

**\*\*\*\*\* Fibonacci numbers for PRZ calculation \*\*\*****FiboIntRetLevelsStr**

List of Fibonacci numbers for internal retracements calculations for PRZ.

**FiboExtRetLevelsStr**

List of Fibonacci numbers for external retracements calculations for PRZ.

**FiboExtensionLevelsStr**

List of Fibonacci numbers for extensions calculations for PRZ.

**FiboAPPProjLevelsStr**

List of Fibonacci numbers for alternative price projections calculations for PRZ.

**\*\*\*\*\* Signal Web Monitoring \*\*\*****bextSigWebMonitoringON**

If true, found patterns are saved as GIF files. Additional pattern info stored in the TXT files.

**sextSigWebMonitoringDir**

Directory where GIF+TXT files are stored

**\*\*\*\*\* Debugging \*\*\*****bDebug**

If true, debug messages will be displayed as Alert messages and also written to the log files.