

PipStrider™ User Manual

What is PipStrider™ ?

Welcome to PipStrider™, an automated foreign exchange trading system, or **Expert Advisor**, that runs on the **Metatrader 4** platform. It can trade on any currency pair. The PipStrider™ features an exclusive Martingale Disrupter™ technology that helps protect your account balance. Before you can use PipStrider™, you must download Metatrader 4 from a broker, and open an account. A demo account is recommended for those learning foreign exchange or getting started with PipStrider™.

Getting Started

MetaTrader 4 can be downloaded from any broker that uses the platform to manage its customers' foreign exchange trading. The steps in opening a demo account and downloading the platform are outlined here, using the Forex.com version for demonstration purposes.

What We Need From You

If you have not already specified a live account number, we need one live account number that you would like to have the PipStrider™ activated for. We also need 2 demo account numbers that you wish to use. Please send an email to the support address where you purchased the PipStrider™, requesting that the EA be allowed to trade on those accounts.

Installing Metatrader 4

1. Navigate to the Forex.com Metatrader Home Page at :
<http://www.forex.com/metatraderuk/index.html>.
2. On the that page, click on the **Free Practice Account** heading.
3. On the Demo Account page, fill out the form to **Request a Demo Account**.
4. Press **Submit**, and a pane will appear telling you whether your request was successful. Follow the instructions to **Download the MT4 Platform** to start the download, and save the file to your desktop or in a convenient folder.
5. To open a live Forex.com account, use this link:
https://secure.efxnow.com/NewOLS_MQUV_EN/applyforex.aspx?BC=MQUV&IBC=BRUN&SIBC=BRUN

[With Forex.com, you can request that your live account be based in either USD or in Euros!](#)

- Double click on the MT4.exe icon to install the Metatrader 4 platform. After a series of preliminary setup screens, the final screen of the **Forex.com** sequence will appear. Press **Finish** and Metatrader will launch.

N.B. Bear in mind that the installation procedure and screens will vary from broker to broker, as the MT4 platform is customized for each broker.

- The **Open An Account** dialog box will appear when the MT4 platform opens. Fill in the information for your Demo Account. Before you can proceed you must check the box indicating that you agree to subscribe to the broker's newsletters.

Note: For trading 2 currency pairs, you may wish to open a standard account with 1:200 leverage and a \$4,000 deposit.

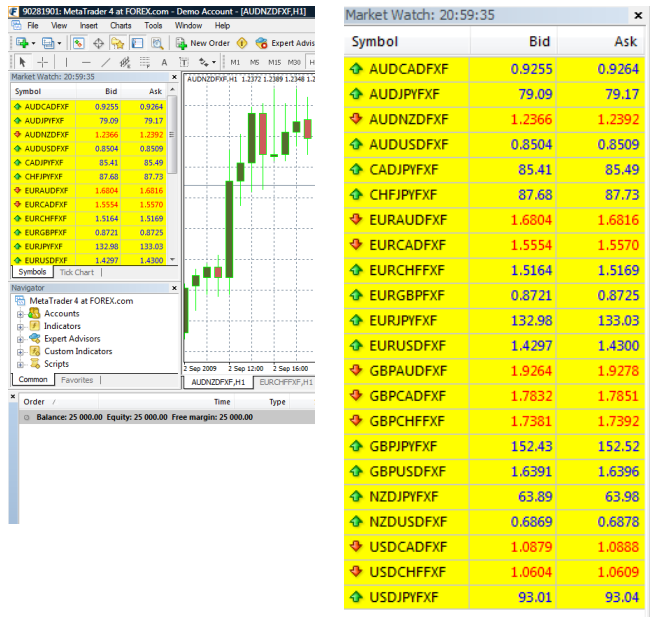
- Click **Next**, and you will be taken to a screen showing one or more servers to which your platform will be connected for trading. Select a server, if necessary, and click **Next**.

Address	Company	Ping
Forex.com-Demo	FOREX.com	0 ms
Forex.com-Demo(R)	FOREX.com	47 ms

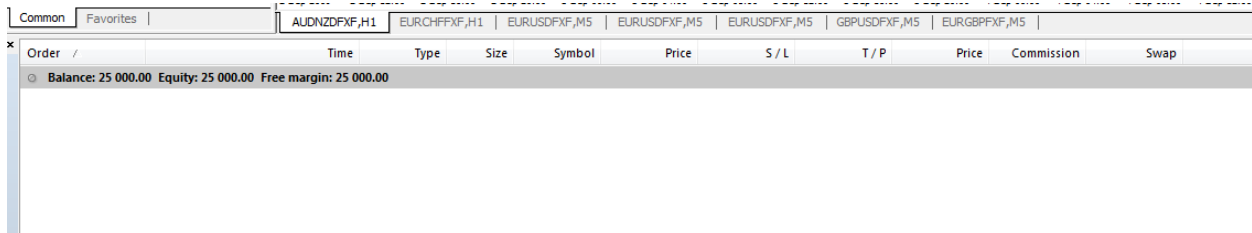
- Details of your demo account will now appear in the **Registration** window. Make a note of the Login, Password, and Investor information. Then press **Finish**.



- The Metatrader 4 platform window will now open. Depending on your broker's customization, one or more currency pair **charts** may be open in the window. You may close these for the time being by clicking on the **x** in the upper left corner of each chart pane.

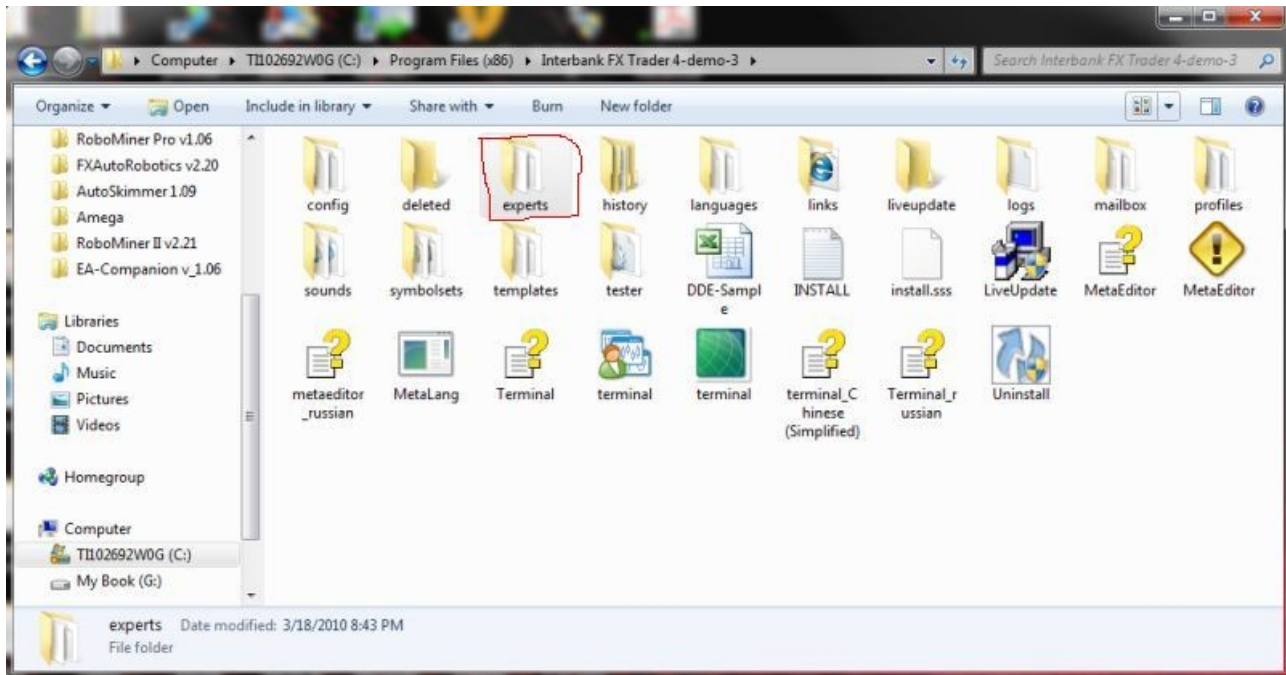


- If they do not appear in the MT4 window, open the **Market Watch**, **Navigator**, and **Terminal** panes by pressing Control+M (for Market Watch), Control+N (for Navigator), and Control+T (for Terminal). These

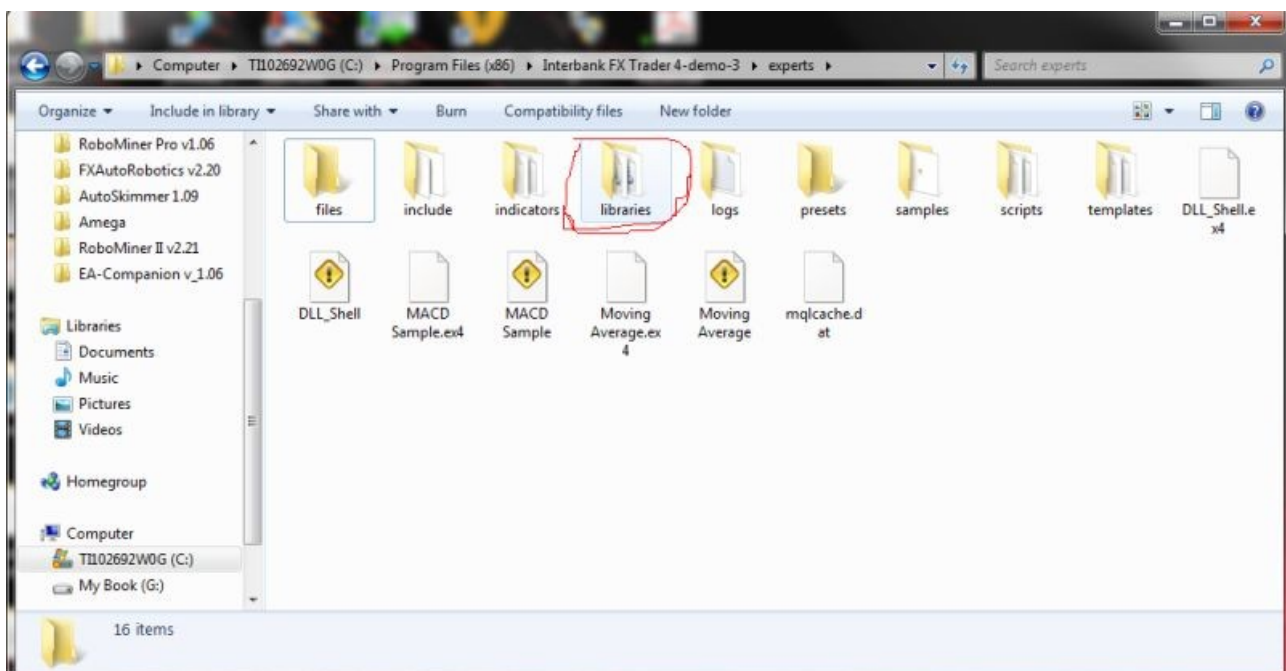


- At the top of the Market Watch window, right click on the word "Symbol" and click on "Show All" to display all currency pairs. Finally under the **Tools** menu, select "Options," click on the "Charts" tab, and uncheck "Save deleted charts to reopen." Press OK.

To install the EA, you must put the PipStrider.ex4 file into the experts folder that is in the Metatrader folder for the platform that you are using. To do this, click on "My Computer" and then double-click on Drive C: to open it. Then double click on either "Program Files" or "Program Files (x86)", depending on which version of Windows you have. Once you are in the "Program Files" folder, double click on the folder for your Metatrader platform. In this example, the Metatrader platform is in a folder called "Interbank FX Trader 4-demo-3". Once you are in the folder, find the folder named "experts". It is circled in the example below. You will need to double-click on that experts folder to open it, and then paste the PipStrider.ex4 file in that folder.



Next you need to put the PipStrider.dll file in the "libraries" folder that is in the experts folder. You should see the libraries folder as in the example below. Double click on the libraries folder to open it, and then paste the PipStrider.dll file in it.



Installing PipStrider™

1. Navigate to the PipStrider™ Home Page at <http://www.PipStrider.com>.
2. If you haven't already done so, click on the "subscribe" link further down the page to subscribe to the PipStrider™ Hints and Tips Newsletter.
3. You can download the install application at : http://www.pipstrider.com/downloads/PipStrider_Installer.exe
4. Run the application. The EA will be installed in each of your metatrader platforms, and the DLL and preset files will be installed for you as well
5. Restart your Metatrader platform(s). From the Market Watch (Control-M), select AUDCAD to open the first chart. It will display with a 1 hour (H1) timeframe.
6. Display the Navigator (Control-N or View⇧Navigator). Drag the PipStrider from the Expert Advisors branch of the Navigator tree onto the open AUDCAD chart.
7. In the open PipStrider™ dialogue box, under the Common tab, place a check beside "Allow Live Trading". This will allow the PipStrider™ Expert Advisor to trade on the chart.
8. Under the Common tab, you will also need to place a check beside "Allow DLL Imports". This will allow the PipStrider™ to automatically determine if your live account number is authorized for trading using the new dll file. The unlock code is no longer used.
9. To turn on Expert Advisors, ensure that the Expert Advisors button on the Metatrader toolbar is green. If it is red, click on it so that it turns green. In the upper right corner of the chart, the word PipStrider™ should appear, followed by a happy face ☺.
10. If an x appears in place of the happy face, double check that the Expert Advisors button on the Metatrader toolbar shows a green hat and arrow. Click on it if it does not.
11. If a frowny face ☹ appears in place of the happy face, open the dialogue box (by pressing F7), click on the Common tab, and make sure that there is a check next to Allow Live Trading. Press OK to close the dialogue box.
12. To trade on a second currency pair, repeat steps 5-8, substituting it for another currency pair, i.e. GBPUSD or EURNZD. In addition, change the first digit of the magic number in the second dialogue box (on the new pair) in order to avoid conflict with trades opened on the other pair (AUDCAD).

Using PipStrider™

PipStrider™ user settings are made in the dialogue box. To open the dialogue box, select the chart on which you want to adjust PipStrider™ settings, and press F7. Once you have made changes to the settings, save the new settings by pressing OK.

User Settings

DoTrades (default = true)	The default value of true will allow PipStrider™ to open trades. If this is set to false, PipStrider™ will not open any new trades, but it will continue to manage any open trades.
MonitorAndClose (default = false)	If true, monitors and continues an existing trade sequence as needed, and closes trades when appropriate but does not allow any new trade sequences to be opened.
StealthMode (default = false)	Default is False. If False, the TakeProfit shows on the platform as in previous versions. If True, the TakeProfit is removed from each trade, and the EA monitors the trades internally for when they should be closed.
TradeDirection (default = 0)	If left at 0, the EA will open buy and sell trades, and will monitor each side as a separate martingale series. If set to 1, then only buy trades will be opened, and if set to -1, then only sell trades will be opened.
TradeRange (default = 40)	This sets the level for the TakeProfit on each trade, and also sets the level where the next trade in the series will be opened, if necessary.
StopLoss (default = 0)	Optional, but not recommended. It is far better to leave this at 0.
UseMartingaleDisrupter (default = true)	Set to true to use the exclusive Martingale Disrupter™ technology to help protect profits from a runaway martingale sequence. This works in conjunction with the next four settings.
AdjustTakeProfit (default = true)	If true, will adjust the TakeProfit as needed to allow for the DisrupterClose prices to move to cover increasing negative swap.
DisrupterClose (default = 0.60)	Used in conjunction with the OnlyAfterLevel setting, this helps the EA to avoid going too high in the martingale levels. If the level is at the OnlyAfterLevel or higher, you can specify that even a small profit will be taken, if available, instead of waiting for the full TP to be reached. This is a very useful tool and it is recommended that you use it.
DisrupterClose2 (default = -5.0)	Used in conjunction with the OnlyAfterLevel2 setting, this also helps the EA to avoid going too high in the martingale levels. If the level is at the OnlyAfterLevel2 or higher, you can specify that you want the trade sequence closed sooner than normal instead of waiting for the full TP to be reached.
07/02/2010	Copyright © 2010, Forex-Goldmine, Inc. 6

IncludeBuySwap (default = true)	If true, the swap on the buy side is included in all disrupter close calculations for that side.
IncludeSellSwap (default = true)	If true, the swap on the sell side is included in all disrupter close calculations for that side.
UseAutoSwap (default = false)	If true, then negative swap is not included at trade levels greater than or equal to OnlyAfterLevel2. It can get you out of a trade sequence sooner, but can cause a loss, so it is not recommended unless absolutely necessary.
OnlyAfterLevel (default = 3)	Specifies the trade level where the Martingale Disrupter™ technology starts to work.
OnlyAfterLevel2 (default = 5)	Specifies the trade level where the Martingale Disrupter™ technology becomes even more aggressive in doing its work to get you out of the trade sequence.
MaxMartingaleLevel (default = 7)	This sets the maximum martingale level that is allowed to be opened. If the trading comes to the point where a higher level would normally be opened, the EA will close all trades in that series and start over at level 1.
CloseBeyondMax (default = true)	If true, then when the price reaches the place where the EA would normally open a trade beyond the MaxMartingaleLevel, the EA closes all open trades (at a loss) on that side. If False, then the EA does not close the trades, but just allows the trades to sit there waiting for a retracement, and it does not open any additional trades beyond the MaxMartingaleLevel.
MaxDrawDownPct (default = 100.0)	The maximum drawdown that can occur between the account balance and account equity before the EA will close all of its trades. This is not the primary way to tame the martingale series, since there are other settings which mitigate the Martingale series.
UseGridExpander (default = true)	If true, expands the TradeRange when the trade level for either side reaches or exceeds the OnlyAfterLevel.
ExpandPips (default=50)	No. of pips to expand the TradeRange if above is true, and trading has reached the OnlyAfter level.
ExpandPips2 (default=60)	No. of pips to expand the TradeRange when the OnlyAfterLevel2 is reached.
TradeLots (default = 0.01)	This should be left at 0.01 or 0.02 unless you have an unusually large account. This sets the size of the first trade in the Martingale series. Anything larger than 0.02 is usually not necessary and is usually dangerous.
BalanceFactor (default = 5000.0)	Not used if you specify an amount in TradeLots. Calculates the TradeLots for you, as 0.01 lots per BalanceFactor worth of account balance.
ControlBalance (default = 0.0)	If you would like to withdraw profits at fixed profit intervals, and even have back tests take that into account, then put your starting balance here. This works in conjunction with the next three settings.
07/02/10	Copyright © 2010, Forex-Goldmine, Inc. 7

LockInProfits (default = 0.0)	This is where you put the amount of profit you would like to withdraw each time your account equity reaches this amount of profit over your ControlBalance amount. The BalanceFactor will then calculate lot sizes based on your new internal "Working Balance" instead of the balance that the platform thinks you have.
StopWhenProfitReached (default = false)	If true, then when the account equity is equal to the sum of the ControlBalance and the LockInProfits amounts, all open buy and sell trades are closed and the EA waits until the profit amount is withdrawn from the account before resuming opening trades.
ResetFundsWithdrawn (default = 0.0)	If 0, nothing is reset. If it is a positive number, then the FundsWithdrawn value is set to that positive number. If you put -1 (or any negative amount) into this setting, it will reset the FundsWithdrawn back to 0. When backtesting, this should always be set to -1. The total funds withdrawn and the internal working balance can be viewed in the back test journal, at the conclusion of each back test.
MaxLots (default = 0.25)	If the BalanceFactor is used, then sets the maximum number of lots that can be calculated via that method as the start of the Martingale series.
MagicNumber (default = 734775)	The number series assigned to trades opened so that PipStrider tm can control exits. If PipStrider tm is attached to more than one currency pair, the MagicNumber must be changed so that each instance of PipStrider tm will control its own trades. Use this feature when trading any currency pair.
Send_Email (default = false)	If set to true, the EA will send an email to let you know what the current martingale level is for each side (buy and sell) and also the current profit for open trades on each side.
Send_Frequency (default = 0)	Determines the frequency, in minutes, that emails will be sent. Possible values are 60, 240, 480, 720 and 1440 for hourly, every 4 hours, every 8 hours, every 12 hours, and once a day.
Send_Minute (default = 0)	Sets which minute of the hour you want your emails to be sent. If set to 10, for example, and if Send_Frequency is set to 60, then an email will be sent on the first tic at 10 minutes after each hour.
Sunday (default = true)	Trade on Sunday evening? True or false.
Monday (default = true)	Trade on Mondays? True or false.
Tuesday (default = true)	Trade on Tuesdays? True or false..
Wednesday (default = true)	Etc.
Thursday (default = true)	Etc.
07/02/10	Copyright © 2010, Forex-Goldmine, Inc. 8

Friday (default = true)	Etc.
ResetMaximums (default=false)	Resets history of Maximum Martingale Levels Reached back to 0.
CloseAllBuyTrades(default=false)	If true, all buy trades that are open are closed. Be sure to have DoTrades set to false, otherwise a trade will open again.
CloseAllSellTrades (default=false)	If true, all sell trades that are open are closed. Be sure to have DoTrades set to false, otherwise a trade will open again.

Please Note: It will be very useful for you to get the PipStrider™ Hints and Tips Newsletter. This newsletter will give you lots of information on the various settings, and will help you to understand why you should use certain settings. You can subscribe to this newsletter at <http://www.pipstrider.com/subscribe.html> .

How To Set Up the E-Mail Feature that is Included in the PipStrider™:

To use the new e-mail feature, you must have access to an SMTP mail server that does not require TTL or SSL. It must allow a straight transfer of e-mail without either of those encryption methods. You also need your user login and password and the port number for that server. Once you have that information, go to your Metatrader Platform and at the top, click on "Tools". Then, when the menu drops down, click on "Options". Then find the E-Mail tab and click on that.

Next, you need to put a check in the "Enable" box to turn this feature on. Then fill out the required information with your SMTP server and E-Mail account information.

*** Important: You must put a port number after the name of your SMTP server, preceded by a colon (:). For example, if your server uses port 26, then your server name would be entered as follows:

yourservername:26

It might look something like this: smtp.servername.com:26 or

(another server using port 80) smtp.mailserver.net:80

You can have the e-mail sent as a text message to your cell phone. Follow the instructions from your cell phone provider on what to enter as the email address in that case. For Verizon, it would look like this: your_10_digit_phone_number@vtext.com or 5551112222@vtext.com

Each cell phone provider has their own domain to use, so check with your company if it is not Verizon.

When you have entered all of the information, then click on the "Test" button and then close that form by clicking on the OK button. Then look under the journal tab at the bottom. It will tell you whether the test e-mail was sent or whether an error was encountered. In some cases, it may take several seconds for the message to show up under the journal tab.

Money Management and Safety

PipStrider™ is designed to be as safe as possible, although no forex trading system can be 100% safe. Consequently, it is highly recommended that users withdraw 1/2 of any profits generated at

the end of each month from their accounts, and set this money aside. This should be done until an amount equivalent to the original investment has been withdrawn. At this point, only profits are being traded, and the original principal can no longer be lost.

How PipStrider™ Works

The objective in designing PipStrider™ was to achieve a reasonable risk level in forex trading while generating significant profits comparable to other forms of investment. The PipStrider™ uses a Martingale method of setting lot sizes for each trade. Normally, the martingale method is frowned upon by experienced traders, because it can be very dangerous. However, we have invented a new exclusive technology that we have chosen to call the Martingale Disrupter™ which helps protect your account balance. It tames

the martingale so to speak, and allows you to use it with much less danger than is normal. While no martingale system is absolutely 100% safe, it is our belief that the methods we use to mitigate the dangers will go a long way to help avoid the usual problems associated with the martingale system. To our knowledge, the PipStrider™ is the very first and only EA to use this new technology in association with the martingale method of trading. The martingale system and the Martingale Disrupter™ are explained in more detail in the following pages.

Important Note

Even though the PipStrider™ EA uses the Martingale Disrupter™ to help the martingale to be less dangerous than normal, the martingale system should still be respected as being potentially dangerous. The developer and distributors of this EA cannot give you trading advice, but we can tell you that we would not use aggressive settings if we were not thoroughly experienced with this EA, and did not understand the principles behind it. There is a place for the more aggressive settings, but not when you first use the EA.

For Moderate Risk Settings: Minimum balance would be \$4000, with \$5000 preferred.
TradeLots=0.01 .

Detailed Explanation of How the Martingale System works:

The martingale is a system, or pattern that some gamblers have used in casinos. They bet on either black or red on the roulette wheel, for example. (This is a very simplistic example that does not take all the elements of a roulette wheel into consideration.)

They bet \$1.00 on black.

Red comes up.

They lose. So they bet \$2.00 on black.

They lose.

They bet \$4.00 on black and lose.

They bet \$8.00 on black and it comes up black. They win enough to cover all their previous losses and make a little bit besides.

The problem is...

1. In theory, it is possible to lose so many times that you just don't have enough money to double your bet again.
2. The casinos have a table limit, that you cannot bet more than x dollars in one bet. That keeps people from cleaning them out with the martingale pattern.

In the PipStrider™ EA, each trade, buy and sell is totally separate. The following explanation is only for the buy side, but it applies in reverse for the sell as well.

The EA buys 0.01 lots at a price of 1.0000, for example, and the TakeProfit is set at 1.0040 (40 pips).

The price goes down (We lose that bet, but the trade is still open).

When the price goes down 40 pips to 0.9960, the EA buys .02 lots. Notice that we just doubled our bet by doubling the lot size. As soon as that second trade is opened, the take profit on both buy trades is set to the opening price of the previous (or first) trade.

The price goes down again. We lose again, but both trades are still open.

The EA buys 0.04 lots at 0.9920 (40 more pips down). The TakeProfit is now set to the opening price of the next to the last trade, or 0.9960 on all trades.

This time, the price goes up 40 pips and all 3 trades close at 0.9960. Because of the 0.04 lots on the lowest trade, we actually come out ahead, even though the first trade was a loser, the 2nd trade broke even, and the last trade won 40 pips.

The Martingale Disrupter™

Now, since the forex market can move fast at times, and because we only have so much margin that we can work with, we do not want to keep doubling our trade lot sizes too quickly. So, starting with level 3 (the OnlyAfterSetting) the EA begins to utilize the various elements of the Martingale Disrupter™. You will notice a different size for each element of the trading grid, and the trades might close even earlier than what was shown in their TakeProfit setting. All of that is working together to put the "brakes" on the martingale, making it safer than if we had not put it to use.

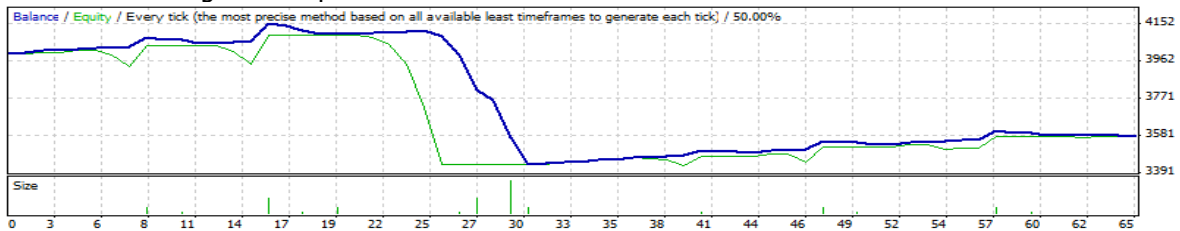
It is possible for prices to move in such a way that the main elements of the Martingale Disrupter™ do not have a chance to work, and so you always have to be prepared for more extreme measures. In this case, once you reach the level that is the equivalent to your MaxMartingaleLevel setting, if the prices move so that the EA would normally try to open yet another trade at double the lot size again, it closes all the trades in that series instead (at a loss). The idea is to get out of that series and pick up the pieces and continue on from there. Fortunately, the Martingale Disrupter™ does work most of the time, and such occurrences, where a trade series has to be closed at a loss, are relatively rare. But they still can happen.

Finally, while the buy side is doing all of what we have explained so far, the sell side is doing the exact same thing, with its own series of trades, and keeping track of them totally separate from the buys, except that the sells have to go down 40 pips to win, and up 40 pips to lose. So, even if a buy trade loses because the price went down 40 pips, a sell trade just won because of that.

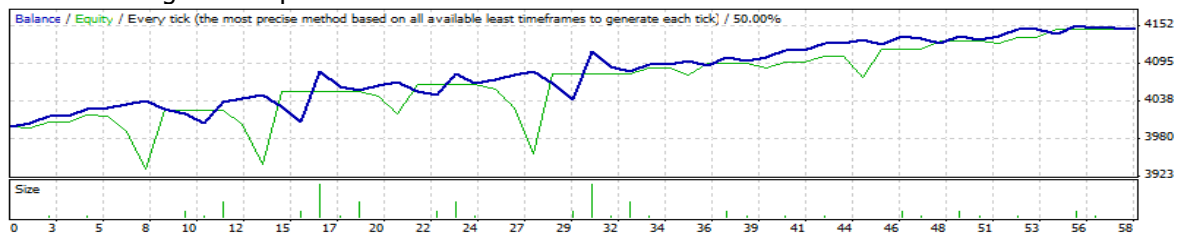
How the Martingale Disrupter™ Helps Your Trading:

The first graphic shows the equity and balance curve on an AUDCAD backtest for the month of Oct. 2009. The MaxMartingaleLevel setting is set to 6, but the OnlyAfterLevel setting is set to 8, so that the Martingale Disrupter™ never activates. For the second graphic, all settings were left the same, except that the OnlyAfterLevel setting was set to 3, so that the Martingale Disrupter™ was able to activate.

Without the Martingale Disrupter™ :



With the Martingale Disrupter™ :



Broker Requirements

When selecting a broker for live trading, please bear in mind that PipStrider™ requires a broker that is not a dealer desk. This requirement is important since PipStrider™ usually never loses trade sequences.

Consequently if the broker is taking trades against you (i.e., is a dealer desk), it will always lose. This results in a hostile relationship with the broker, which may then refuse to pass through PipStrider™ trades.

The broker should have micro lot trading capabilities (i.e., be able to accept .01 lot trades), and should offer at least 200:1 margin leverage. Lastly, the broker should be big enough that it is not in danger of closing. At this time, we can recommend Forex.com, GoMarkets and FXDD.

Why an Introducing Broker?

Brokers always want to attract new traders and, of course, keep the ones they have. It is a great inconvenience for a broker if you close out your trades and move your funds to another broker. When you as an individual are not

satisfied and do switch brokers, the broker loses only one account. But if you open an account through a good Introducing Broker (IB) you have a bit more clout. Not only would the broker lose your account, but the Introducing Broker could also lose an account. Moreover, if many customers are dissatisfied, the broker might not receive new referrals from that IB. Brokers thus tend to pay attention when an IB speaks on your behalf. What's more, the IB is more familiar with your broker and its limitations. Your IB may be able to help you directly, or refer the case to a more advanced or better trained liaison called an institutional assistant or manager. The IB is paid by the broker for bringing in accounts and maintaining good relations (helping clients) on their behalf. It costs the trader nothing to use the services of an IB.

We provide the service as an Introducing Broker with Forex.com for PipStrider™ traders via the following link: https://secure.efxnow.com/NewOLS_MQ_UV_EN/applyforex.aspx?BC=MQUV&IBC=BRUN&SIBC=BRUN

Forex VPS: Trading with Security

PipStrider™ can operate on a Virtual Personal Server (VPS) for added security. A VPS is a secure server on which you can open a personal account for trading with Metatrader Terminal and install the PipStrider™ EA just as you would on your home computer.

With Forex VPS, your PipStrider™ trading platform is hosted remotely from your computer, so when you lose your Internet connection or experience computer down time due to maintenance or power outages, your PipStrider™ continues to trade uninterrupted.

Forex VPS offers three levels of service to suit the needs of all levels of trader. For additional information or to open an account, go to http://www.forexvps.com/?a_aid=b956baf5

On Chart Display

PipStrider™ displays information on the currency pair chart in order to keep you informed of its status and trading. The on-chart information is summarized in the following table:

PipStrider x.xx	EA name and release number
Current Server Time	The current time according to your broker's server
Account Leverage	The leverage on your account.
Balance Factor	Displays what you have in your BalanceFactor setting.
Working Balance	This displays the internal working balance that the EA is using for lot size calculation via the BalanceFactor if you are simulating regular profit withdrawals from your account.
Funds Withdrawn	The total withdrawn from your account based on your fund withdrawal simulation settings.
Trade Lots	This shows what you have in your TradeLots setting.
Base Lots	The starting number of lots for each Martingale series.
MagicNumber	Used to associate the trades of this EA to this EA.
Trade Direction	Either Buy and Sell, Buy only, or Sell only. This is determined by the TradeDirection setting. (0, 1 or -1).
Trade Range	The Trade Range in Pips for each trading grid level as determined by the TradeRange setting.
Maximum Allowed Level	The maximum trade level allowed per the MaxMartingaleLevel setting.
Close Beyond Max	Shows whether true or false in the settings.
Use Grid Expander	Shows whether it is true or false in the settings.
Martingale Disrupter™ Level	The first level at which the exclusive Martingale Disrupter™ technology kicks in.
Expand Pips	The number of pips in the ExpandPips setting.
Disrupter Close	The amount shown in the DisrupterClose Setting.
Martingale Disrupter™ Level 2	The additional level at which the exclusive Martingale Disrupter™ technology kicks in.
Expand Pips 2	The number of pips in the ExpandPips2 setting.
Disrupter Close 2	The amount shown in the DisrupterClose2 Setting.
Next Buy Price	The price at which the next buy trade will be taken.
Buy Side TakeProfit	The current TakeProfit on the buy side.
Calculated Buy Disrupter Price	This is a calculated estimate of when the Martingale Disrupter™ will close the trades on the Buy side. It only is applicable at OnlyafterLevel or above. Below that trade level, it displays 0.0000 .
Next Buy Lots	The anticipated lot size of the next buy trade.
Next Sell Price	The price at which the next sell trade will be taken.
Sell Side TakeProfit	The current TakeProfit on the sell side.
Calculated Sell Disrupter Price	This is a calculated estimate of when the Martingale Disrupter™ will close the trades on the Sell side. It only is applicable at OnlyafterLevel or above. Below that trade level, it displays 0.0000 .
07/02/10	Copyright © 2010, Forex-Goldmine, Inc. 16

Next Sell Lots	The anticipated lot size of the next sell trade.
Current Buy Level	The current Martingale level on the buy side.
Current Buy Side Profit	The current profit for all open buy positions.
Current Sell Level	The current Martingale level on the sell side.
Current Sell Side Profit	The current profit for all open sell positions.
Maximum Sell Level Reached	The Maximum sell martingale level reached historically in trading since the last time this value was reset.
Maximum Buy Level Reached	The Maximum buy martingale level reached historically in trading since the last time this value was reset.
Account Authorized	True, if your account authorized for trading. Demo accounts are authorized, but live accounts must have a license purchased in order to be authorized.
Monitor And Close	Displays the current setting for the MontorAndClose setting. If true, the EA will monitor the current trade sequence for each side, and will even open additional trades if needed to carry the existing sequence to its normal conclusion. However, once a buy or sell sequence is closed, a new trade sequence will not be opened.
DoTrades	Displays the current setting of the DoTrades setting. If true, the robot will trade when the price is hit and the expert button is green, allowing the order to be sent.

CFTC RULE 4.41 - HYPOTHETICAL OR SIMULATED PERFORMANCE RESULTS HAVE CERTAIN LIMITATIONS. UNLIKE AN ACTUAL PERFORMANCE RECORD, SIMULATED RESULTS DO NOT REPRESENT ACTUAL TRADING. ALSO, SINCE THE TRADES HAVE NOT BEEN EXECUTED, THE RESULTS MAY HAVE UNDER-OR-OVER COMPENSATED FOR THE IMPACT, IF ANY, OF CERTAIN MARKET FACTORS, SUCH AS LACK OF LIQUIDITY. SIMULATED TRADING PROGRAMS IN GENERAL ARE ALSO SUBJECT TO THE FACT THAT THEY ARE DESIGNED WITH THE BENEFIT OF HINDSIGHT. NO REPRESENTATION IS BEING MADE THAT ANY ACCOUNT WILL OR IS LIKELY TO ACHIEVE PROFIT OR LOSSES SIMILAR TO THOSE SHOWN.

No representation is being made that any account will or is likely to achieve profits or losses similar to those shown. In fact, there are frequently sharp differences between hypothetical performance results and the actual results subsequently achieved by any particular trading program. Hypothetical trading does not involve financial risk, and no hypothetical trading record can completely account for the impact of financial risk in actual trading.

All information provided is for educational purposes only and is not intended to provide financial advice. Any statements about profits or income, either expressed or implied, do not represent a guarantee. Your actual trading may result in losses as no trading system is guaranteed. You accept full responsibilities for your actions, trades and profit or loss, and agree to hold the developers of the PipStrider™ EA and any authorized distributors of this information harmless in any and all ways.

Please familiarize yourself with the method by which lot sizes are calculated. It is vitally important that you do not exceed the recommended lot size in relationship to your balance. There is no system of forex trading that is guaranteed to be 100% safe, but following these lot size rules will help increase your chances of success over the long term.