

Artemis_Sitter v3.30

Standard / Pro Editions

MT4 Expert Advisor

Copyright © 2005-2009, Yannis Sferopoulos

Yannis.21@gmail.com

You must read following acknowledgment and disclaimer very carefully and if you do not agree in full with the terms and conditions stated in both of them, **DO NOT PROCEED WITH THE INSTALLATION AND / OR THE USE OF THE EXPERT ADVISOR.** The use of the expert advisor explicitly indicates that you have read and agreed on all terms and conditions stated in the disclaimer and the acknowledgment below.

ACKNOWLEDGEMENT

Artemis_Sitter© is the property of the author, Yannis Sferopoulos. The expert advisor and any related software or related document is owned by the author and protected by copyright law and international copyright treaty. Therefore, you must treat both the software and the documentation like any other copyrighted material. You are granted a non-exclusive license to use the software, but it may not be copied, rented, leased, diffused or transferred in any other way. You may not distribute, copy, emulate, clone, rent, lease, sell, modify, decompile, disassemble, or otherwise reverse engineer, or transfer the software, or any subset of it. All rights not expressly granted here are reserved by the owner. Purchase or rental of this product does not transfer any right, title, or interest in the software. You are hereby notified that the software product is protected by EEC Copyright Law and you may be held responsible by the author for any infringement of such rights or violations of this agreement and will be prosecuted to the maximum extent possible under law. It is forbidden to distribute this software or the documentation, to third parties, including but not limited to, uploads to user groups, forums, shareware, eBay, and in general any web sites, without the explicit written authorization from the author.

DISCLAIMER

Any information herein and the use of the expert advisor should not be regarded by recipients as a substitute for the exercise of your own judgment. Any opinions expressed in this content are subject to change without notice and the author is not under any obligation to update or keep current the information contained herein. Spot foreign currency transactions, options, derivative products and futures are not suitable for all investors, and trading in these instruments is considered very risky. Past performance is not necessarily indicative of future results.

Try the Artemis_Sitter expert advisor on a demo account first, until you fully understand how it works and verify by yourself that it works correctly and as you expect BEFORE putting any real money in it. An immense deal of work has been done to assure that all information supplied in this document and elsewhere is as accurate as it can be, and in the same time, the software including but not restricted to the expert advisors that can be provided as demo or registered version, is functioning correctly without problems and bugs. However, the author, any of his representatives, associates or partners do not give any expressed or implied warranty as to its bug free operations or accuracy and will not accept any liability for errors, bugs, omissions or any other problems that could come up from the use of the software, and cannot and in any way, be held responsible for any damage, expenses, liability or losses that a user might sustain. Users are in fact advised of the possibility of such damages, losses, or expenses and of course, neither the EA nor the information contained herewith constitutes any solicitation or advice for trading.

Artemis_Sitter v3.30 EA

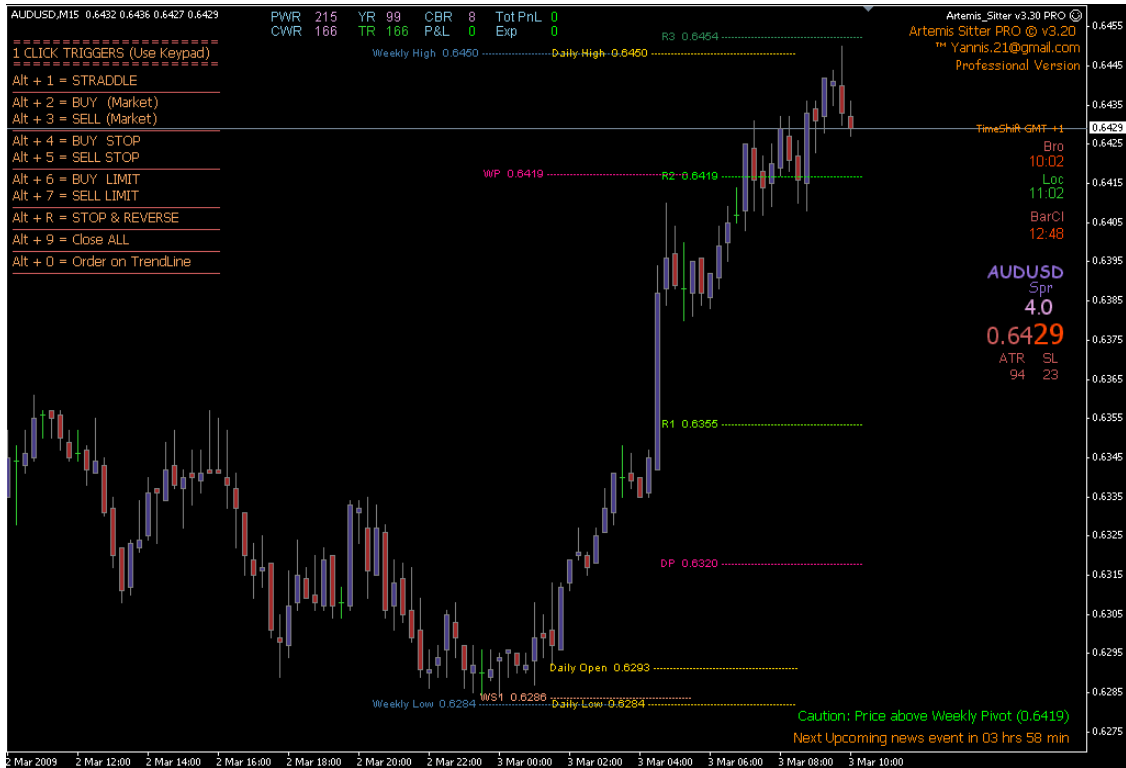


TABLE OF CONTENTS

ACKNOWLEDGEMENT	1
INSTALLATION NOTES.....	3
What Artemis Sitter CANNOT do for you.....	7
What Artemis Sitter CAN do for you.....	7
Quick Info.....	8
Settings / Parameters available.....	10
1 click - manual orders entry shortcuts	24
Version History	26
Licensing.....	29
Error Codes and what they mean.....	30
Comparative sheet between versions	32

INSTALLATION NOTES

Close your MT4 instance

Unzip the file Artemis Sitter.zip to your desktop; you should see a new folder named Artemis Sitter. Double click to open this folder.

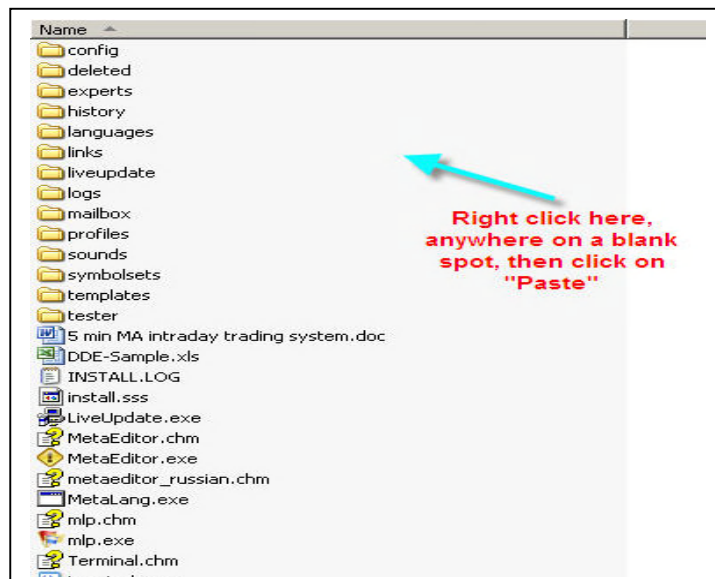
You should now see a folder named **Experts** and another one named **Pop**. Right click on the **Experts** folder, and click on **Copy**

In a windows explorer window, locate your actual MT4 folder, something like C:\Program Files\InterbankFX (or similar depending on your broker and where you initially installed your MT4 platform).

Open this MT4 main folder, you should see folders named **Config, Deleted, Experts, History, Languages, Links** etc.... and you should see files named **Metaeditor.exe, Terminal.exe** etc...

In a blank space anywhere in this window (careful to not click on any folder or on any file), right click and choose **Paste**

You will see a confirmation message telling you that there is already a folder named Experts and if you want to overwrite it, simply say yes (or yes to all), don't worry, none of your own files will be harmed or replaced. Confirm any other message if any, this will place the EA and all the needed files in the right folders

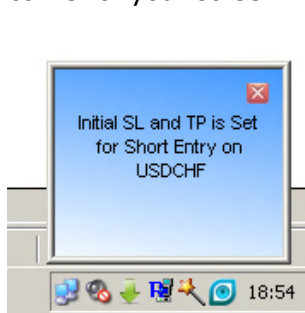


Going back to the folder where you unzipped the files, you will see the folder named Pop (see step 3). Open it and you will find 2 files inside this folder, named Pop.exe_ and Popup.dll_. These are the 2 files needed for the MSN like info box.

First you need to rename these files by removing the last dash _ at the end of their names.

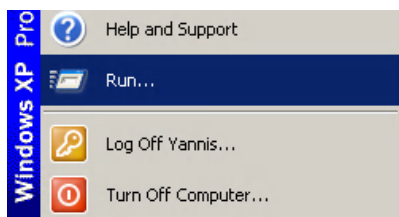
This has been done so attachments don't get blocked by email clients. The files must read Pop.exe and popup.dll without the underscore at the end.

Place these 2 files in the **root directory** (main folder) of your C:\ disk. This allows you to have all the EA messages popping up in a small MSN like box to the lower right corner of your screen.

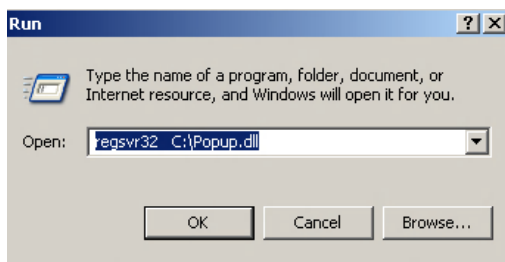


Please note that both these 2 files are virus / malware / spyware free and none of these 2 files accesses, uses, controls, shares or send any personal information from your computer.

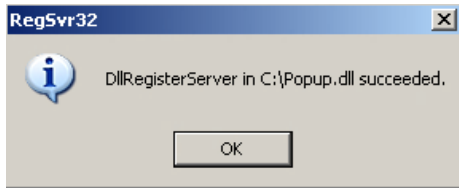
Once you have copied both files to your C:\ drive, you will need to register the popup dll file. To do that, you open the 'Run' dialog box – click on 'Start' then 'Run'



and type the following: Regsvr32 c:\popup.dll

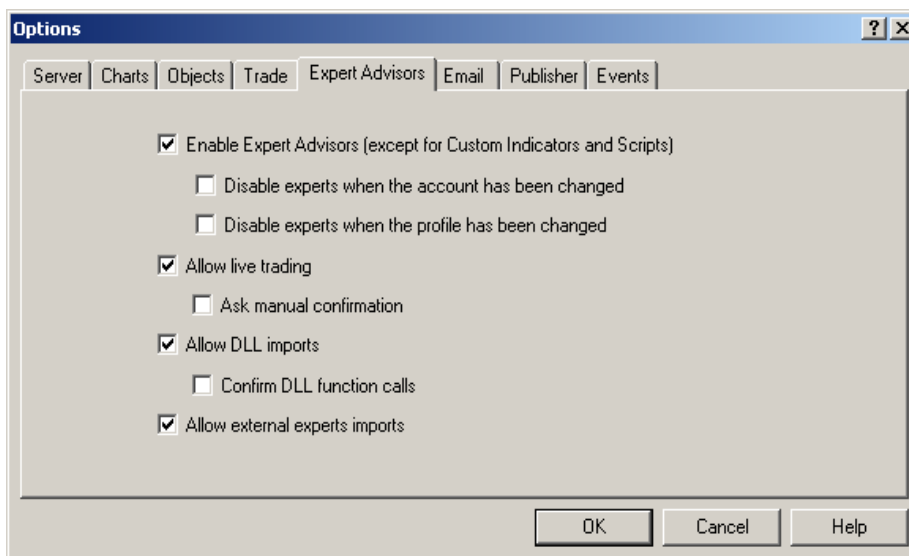


You will see following message

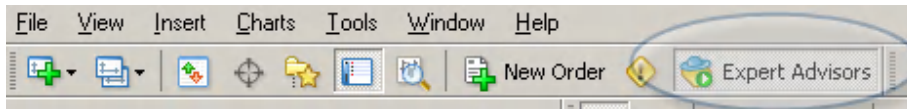


Open your MT4 instance; you should see a new expert named Artemis_Sitter v3.30 Pro. The EA will be grayed out but it doesn't matter. This is because the source file is not provided, but the EA will function properly.

Go to Tools/Option on your mt4 menu and make sure that the settings on the Expert Advisors tab are set as follows:

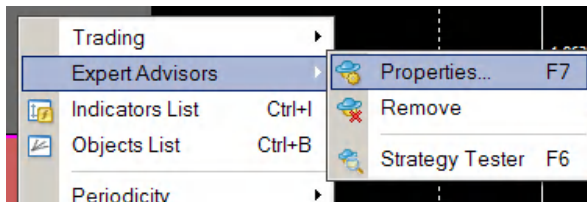


MAKE SURE YOU HAVE THE "EXPERT ADVISORS" BUTTON ENABLED



If everything is ok, you should see the smiling face on the top right corner of your chart just after the EA's name.

Right click on your chart, click on [Experts Advisors](#) and then [Properties](#) or press F7



From the [Common](#) Tab Page, get sure that ALL the checkboxes are checked as follows



Put the EA on the chart(s) where you want it to babysit your trades; don't forget to set up the EA parameters to your own personal liking according to the way you trade and mostly to exactly match your trade lot size.

What Artemis Sitter CANNOT do for you

The EA is not a fully automated trading system, meaning no trading logic is coded within so **it will never place a new order** by itself.

(Unless you use the keyboard shortcut entry keys available in the Pro version).

The EA can only handle and babysit trades already open either manually or by other EAs. So please don't ask how much you can make using the EA or what are the best settings and what pairs can it be used with.

What Artemis Sitter CAN do for you

The EA is developed to be an incredible trading tool which will help you handle your manual trades in a most secure, reliable and proficient way using numerous settings that can be adjusted to match your own trading system and style, helping you get the most profit out of each trade.

Emphasis has been given to reliability and speed of execution, making Artemis Sitter simply the best and top reliable expert advisor of its kind for all traders. Either you are a professional or a junior trader, the Sitter will amongst many other features, handle without problem any account type you may use, any lot size, multiple lots position and any MT4 broker you trade with, no matter if your broker uses the classic 2 and 4 digits or the new 3 and 5 digits for price quotations.

Furthermore, a really ingenious interface allows you to take advantage of new features either difficult to handle under MT4 platform or not available at all.

You can handle and move all your stops directly on the chart just using your mouse and you can also use speedy **1 click shortcut keys to place any kind of order** you wish without the fuss of MT4 standard menus.

This includes **straddles and any kind of pending or market orders and even orders on Horizontal lines or Trendlines drawn on the chart**, everything highly definable to match your requirements.

The number of options available as to how a trade can be handled is really stunning, most of them are briefly described below but also explained in details later on in this user's guide. Note that some options are available only in the Pro version. See comparative sheet between versions at the end of this document.

Version history is available on **page [26](#)**, **licensing information** on **page [29](#)** and **Comparative sheet between Std and Pro versions** on **page [32](#)**.

Artemis Sitter – In a glance

The EA is designed to be used as an assisting tool for manual trading, meaning it will babysit and manage any open trade manually entered and it will disregard (unless you wish otherwise) any existing trade which might have been triggered by another EA.

However, note that Artemis Sitter can also – optionally - handle trades generated by other EAs, giving the possibility to open automatically your positions based on your EA and let Artemis Sitter and its extended capabilities take command of the trade and baby sit as per your requirements.

It will allow you to place any kind of order by just using 1 key from your keyboard, to move your stops using your mouse, to trail positions in various ways and many other utilities described below.

Artemis_Sitter will do the following things once you put it / enable it on a chart:

It will immediately set both a “masked” SL and TP far away from your real settings, hence disallowing the broker to actually ‘see’ your real stops and profit levels (but it will internally monitor your real settings and close position accordingly if needed), or it can simply set your real SL and TP if you choose to do so, according to your settings.

It will automatically secure a position, moving the stop loss at breakeven above or below (depending on the position) your entry price by any number of pips you wish to secure.

It will trail a position using a multitude of features, moving the SL according to the number of pips you wish to use as a trail.

The trail can optionally start either from the very beginning of the trade, or after the position has been secured (moved to break even) depending on your settings.

You can optionally define any moving average to be used as a trail. For example you could use 50SMA as your trail, or any other MA since you can define any of the moving average’s parameter like period, method and apply to constants.

You can optionally use a 1 time stop los trail that will kick in just once as per your settings and will then stay off.

You can optionally use the PSAR indicator commonly used with MT4 to trail your positions.

You can optionally use the previous xx bars High or Low as a trail mechanism.

You can optionally use a step trail mechanism. It will move your stops by xx pips for every yy pips price moves in your direction.

You can use multiple lot positions since Artemis_Sitter provides a scale out mechanism and up to 6 different TP levels. This means that it will automatically start to close portions of your initial lot size every time a TP level is reached.

Artemis Sitter provides a quick Stop & Reverse mechanism. You can reverse any trade in progress using a keyboard combination. The EA will close currently opened trades and initiate a new one in the opposite direction with the settings entered in the EA's inputs. This is done by pressing the left Alt key (left side of the keyboard) and the key 'R' at the same time → Alt+R

If there's 1 trade active, pressing Alt +R will close this trade and open a new one in the opposite direction. If multiple trades are open, the EA will close them all and open a new one in the opposite direction only if all the open trades are in the same direction.

If the Use.PSAR.As.StopReverse parameter is set to true, the EA will do that automatically on any PSAR change of direction.

There is also an automated Stop & Reverse mechanism based on the Parabolic Sar indicator. If you enable this feature, then once Artemis Sitter sees that PSAR changes direction and its new direction is against your trade(s), it will close this trade(s) and initiate a new one in the direction of the indicator.

You can use your mouse to move your stops or take profit level directly on the chart, without going through the fuss of editing your order the 'usual' way.

You can use keyboard shortcut keys to place any kind of order and even a straddle (both long and short pending orders). All pending orders can also be handled manually through the mouse if set through the 1 click shortcuts.

You can easily use trendlines and horizontal lines to place a trade through the 1 click shortcuts.

It will also provide a multitude of visual onscreen information for many things amongst them, upcoming news showing you the impact of the news in corresponding color (red for very volatile, orange for medium), your trade's history flagged on the chart with the P&L for each one etc...

Settings / Parameters available

Lot.Size

Any value (in pips), but it **must** match your manual position lot size.

You can use whatever lot size you want to trade with either full lots or fractional lots (mini or micro) depending on your broker. The value here will be use along with the "Take.Out.Lots" parameter below to allow the EA to eventually support scaling out positions (close partial values of the initial lot size by sizes defined by following parameter).

Take.Out.Lots

Any value (in pips), but it **MUST BE AN EXACT DIVISOR** of Lot.Size. The value here will be used by the expert advisor to partially close a multi lots position, each time it has to do so, which in turn depends on the various take profit levels below.

i.e. Lot.Size=1.20 → Take.Out.Lots=0.40 (3 x Take.Out.Lots exactly equals Lot.Size)
Lot.Size=1.00 → Take.Out.Lots=0.50 (2 x Take.Out.Lots exactly equals Lot.Size)
Lot.Size=1.00 → Take.Out.Lots=1.00 (1 x Take.Out.Lots exactly equals Lot.Size)
Lot.Size=0.60 → Take.Out.Lots=0.60 (1 x Take.Out.Lots exactly equals Lot.Size)

Wrong-> Lot.Size=1.20 → Take.Out.Lots=0.50 (2.4 x Take.Out.Lots = Lot.Size)

As an alternative, you can now define your own scale out position for each one of the 3 TP available instead of using fixed scale out portions of your lot.size through the use of the Scale.Out.Lots parameters.

This is done with the use of the 3 parameters named **Actual.TP1.Lots**, **Actual.TP2.Lots** and **Actual.TP3.Lots**.

If the 1st one of these 3 parameters has any non 0 value, then the EA will use the lot sizes specified in these 3 parameters to scale out your initial position (Lot.Size parameter). If they are set to 0, then the EA will use the Scale.Out.Lots parameter to evenly scale out your initial position.

But here also, these 3 parameters MUST be in accordance with your 3 take profit levels. This means that if you choose for instance to scale out an initial position of 0.7 lots, into 2 parts only, then you can specify for instance 0.4 for Actual.TP1.Lots, set Actual.TP2.Lots to the remaining 0.3 lots (0.4+0.3 = 0.7) and you MUST set Actual.TP3.Lots to 0.

In the same way, if you would like to close the same initial position of 0.7 lots, into 3 parts, then you could use for example 0.3 for Actual.TP1.Lots (which will aim at the 1st TP – actual.TP1), 0.2 for Actual.TP2.Lots (which will aim at the 2nd TP – actual.TP2) and 0.2 for Actual.TP3.Lots for the 3rd TP level.

It's up to you to decide if you want to split a position into equal parts using the scale.out.lots parameter (and setting Actual.TP1.Lots, Actual.TP2.Lots and Actual.TP3.lots to 0), or if you want to use non equal parts and in this case – no matter the value of the Scale.Out.Lots – set up your own lot values for each TP through the use of the 3 Actual.TPx.Lots.

IT IS ESSENTIAL THESE PARAMETERS ARE SET CORRECTLY AND ALSO SET ACCORDING TO THE LOT SIZE YOU USE FOR YOUR MANUAL TRADES

For example, if you have set the EA to handle a position's Lot.Size=1.2 lots with a scale out of 0.4 but your actual position is using a lot size other than 1.2, then you could face malfunctions in the EA's various functions especially in the scaling out mechanism.

Actual.TP1

Any value (in pips).

Actual.TP1.Lots

(Discussed above)

Actual.TP2

any value (in pips).

Actual.TP2.Lots

(Discussed above)

Actual.TP3

any value (in pips).

Actual.TP3.Lots

(discussed above) .

These are the 3 different profit targets you can optionally use with the expert. Each value is defined in pips from entry price, but you are not obliged in any way to use all 3 values. This depends on your initial Lot.Size and the Take.Out.Lots params and you can either use only TP1, TP1 and TP2 or all 3 TPs.

The Actual.TP1 is mandatory and cannot be 0.

The 2 others can be 0 or any number of pips, depending on how many "sub positions" you want your main trade to be broken in.

If your trade is to be handled as 1 position (Lot.Size = Take.Out.Lots) then both Actual.TP2 and Actual.TP3 MUST BE SET TO 0.

If your trade is to be handled as 2 positions (Lot.Size = 2 x Take.Out.Lots) then Actual.TP3 MUST BE SET TO 0.

Let's see some examples to make things clear. What is important to have in mind is that all the values used with these parameters must match. You must give Actual.TP2 a value other than 0 IF your Take.out.Lots value is HALF your Lot.Size (and keep TP3 to 0), and accordingly you must give a value other than 0 to Actual.TP3 if your Take.Out.Lots is exactly at 1/3 than your Lot.Size

So here are some examples, with combinations for previous and current parameters depending on how you would like your trades to be handled. You can have the EA:

1. Babysit a position which will be fully closed in one time, at Actual.TP1 = at +15:

- Lot.Size = 1.60
- Take.Out.Lots = 1.60 (=Lot.Size)

- Actual.TP1 = 15
- ~~Actual.TP1.Lots~~ = 0
- Actual.TP2 = 0
- ~~Actual.TP2.Lots~~ = 0
- Actual.TP3 = 0
- ~~Actual.TP3.Lots~~ = 0

OR

- Lot.Size = 1.60
- ~~Take.Out.Lots = 1.60 (=Lot.Size)~~ Any value
- Actual.TP1 = 15
- Actual.TP1.Lots = 1.60
- Actual.TP2 = 0
- Actual.TP2.Lots 0
- Actual.TP3 = 0
- Actual.TP3.Lots = 0

2. Babysit a trade which will be handled in 2 steps (Lot.Size = Take.Out.Lots x 2) and will be partially closed at 2 different times, one portion (0.60 lots) at +15 and remaining at +25 :

- Lot.Size = 1.20
- Take.Out.Lots = 0.60 (=Lot.Size)

- Actual.TP1 = 15
- Actual.TP1.Lots = 0
- Actual.TP2 = 25
- Actual.TP2.Lots = 0
- Actual.TP3 = 0
- Actual.TP3.Lots = 0

OR

- Lot.Size = 1.20
- Take.Out.Lots = 1.20 (=Lot.Size) Any value
- Actual.TP1 = 15
- Actual.TP1.Lots = 0.70
- Actual.TP2 = 25
- Actual.TP2.Lots = 0.50
- Actual.TP3 = 0
- Actual.TP3.Lots = 0

3. Babysit a trade which will be handled in 3 steps (Lot.Size = Take.Out.Lots x 3) and will be partially closed at 3 different times, one portion (0.40 lots) at +15, second portion (0.40 lots) at +25 and remaining at +50:

- Lot.Size = 1.20
- Take.Out.Lots = 0.40 (=Lot.Size)

- Actual.TP1 = 15
- Actual.TP1.Lots = 0
- Actual.TP2 = 25
- Actual.TP2.Lots = 0
- Actual.TP3 = 50
- Actual.TP3.Lots = 0

OR

- Lot.Size = 1.20
- Take.Out.Lots = 0.40 (=Lot.Size) Any value
- Actual.TP1 = 15
- Actual.TP1.Lots = 0.60
- Actual.TP2 = 25
- Actual.TP2.Lots = 0.40
- Actual.TP3 = 50
- Actual.TP3.Lots = 0.20

So you can consider Take.Out.Lots as the 'portion' of your trade you want to close at each Actual.TP level.

If the 'portion' of your trade is the same as Lot.Size, then your trade will be fully closed when the EA reaches the pips specified in Actual.TP1

You must set TP2 and TP3 to 0.

If the 'portion' is half your lot size, then 1/2 of your trade's lot size will be closed when / if EA reaches Actual.TP1 and the remaining half when / if Actual.TP2 is reached.

You must set TP3 to 0.

If the 'portion' is one third your lot size, then 1/3rd of your trade's lot size will be closed when / if EA reaches Actual.TP1, another 1/3rd when / if Actual.TP2 is reached and remaining 1/3rd when / if EA reaches Actual.TP3.

I hope the 'relation' between Lot.Size, Take.Out.Lots and the 3 Actual.TP levels is now clear, and you should know when to set a Actual.TP parameter to 0, or when to assign a specific value. If not then this is the 1st thing you have to clarify getting in touch with me as soon as possible.

==== ADDENDUM 1 ====

From version 1.82 of Artemis Sitter PRO, 3 more TP levels have been added for a total of 6 different Take Profit levels now available to support more challenging exit strategies.

What has been described in details about the relation and the use of the 3 standard Take Profit levels is also valid for the 3 additional ones.

So if a trader wishes for example split his main trade into 5 parts and use 5 take profits, he must make sure that the division of the Lot.Size parameter by 5 will match exactly his Take.Out.Lots value AND must not forget to set the 6th TP to 0.

==== ADDENDUM 1 ====

Virtual.SL

Any value (in pips).

This is the SL that will be used to set up your manual trade stop loss (if none is already specified) so this is the stop loss the broker will 'see' but also the one that will be in play if your MT4 connection is lost.

The EA must be working in order to use its internal mechanism for monitoring the real SL and TP we have set so if your connection is stable you can use the masked SL (and TP) and let the EA do the rest. If you wish to disable this feature you can set it to 0, in which case the Actual.SL will be used and will update your manual entry.

Actual.SL

Any value (in pips).

This is the amount of pips which the expert will use as a real stop loss. It will internally monitor all your positions and if any one sustains a loss equal to the pips specified here, the EA will immediately close this position.

Virtual.TP

Any value (in pips).

This is the initial TP that will be used to set up your manual trade take profit (if none is already specified) so this is the TP the broker will 'see' but also the one that will be in play if your MT4 connection is lost.

The EA must be working in order to use its internal mechanism for monitoring the real SL and TP we have set so if your connection is stable you can use the masked TP and let the EA do the rest. If you wish to disable this feature you can set it to 0.

Standard.Trail.Pips

Any value (in pips).

This is the amount of pips which the expert will use to trail a position. This means it will start moving your stop loss keeping it away from current price by the number of pips specified here as soon as it can but without ever going back even if price does come back.

Trail.Only.Last.Lot

True or False.

If set to True, this trailing method will be used on the last lot of your position only. It will not affect the first lot(s) in case of a multi lot position.

Standard.Trail.Start.After.Pips

Any value (in pips).

This is the amount of pips AFTER which the expert will use this trail method.

So if you use for example 40, the trailing mechanism will start after the position has moved to +40.

This parameter is available on almost all following trailing mechanisms, which gives you great power and flexibility to combine different trailing methods at different price levels.

Move.To.BreakEven.at.pips

Any pip value.

This is used to lock in a profit, when a trade is in profit by the number of pips specified here. Price must exceed Entry price by this number of pips in order to lock in the profit. How many pips will be locked is specified by the "Move.To.BreakEven.lock.pips" parameter below.

Move.To.BreakEven.Lock.pip

Any pip value. You specify here the amount of pips to lock once the amount of pips specified above by the "Move.To.BreakEven.at.pips" parameter is reached.

Trail.With.MA

True or False.

If set to True then the value of the moving average specified below will be used as a trail mechanism.

MA.Period

The moving average period / length you wish to use. For example if you wish to trail your position using the 50 SMA moving average, you set this parameter to 50, if you wish to use 34 EMA, set it to 34 etc... (The type of the MA is not relevant here since it will be described below)

MA.Method

We specify here the type of the moving average to be used. Here are the available types:

- 0 = Simple Moving Average
- 1 = Exponential Moving Average
- 2 = Smoothed Moving Average
- 3 = Linear Weighted Moving Average

MA.ApplyTo

You can use any of the following applied price constants:

- 0=Close applied on close
- 1=Open applied on open
- 2=H or L applied on either High or Low. The EA will use the High as reference for Short entries, and the Low for Long positions.
- 4=Median applied on Median $(high+low)/2$
- 5=Typical applied on Typical $(high+low+close)/3$
- 6=Weighted applied on Weighted $(high+low+close+close)/4$

So if we want to use a 50SMA on close as a trail, we set:

MA.Period = 50
MA.Method=0
MA.ApplyTo=0

Whereas if we want to set the trail at 34EMA level on weighted, we set:

MA.Period = 34
MA.Method=1
MA.ApplyTo=6

NOTE: The level of the MA is based **on previous closed bar**, not on the MA value of current bar.

Trail.Threshold.Pips

A threshold or slack we want to add to the moving average level, if any. For example, if we set this parameter to 5, then if the EA uses the MA as a trail, it will add (or subtract

– depending if we are long or short) 5 pips to the moving average's price level.

Trail.MA.Only.Last.Lot

True or False.

If set to True, this trailing method will be used on the last lot of your position only. It will not affect the first lot(s) in case of a multi lot position.

Trail.With.MA.Start.After.Pips

Any value (in pips).

This is the amount of pips AFTER which the expert will use this trail method.

So if you use for example 40, the trailing mechanism will start after the position has moved to +40.

Trail.With.PSAR

True / False

If set to True then the value of the Parabolic SAR indicator will be used as a trail mechanism.

Psar.TimeFrame

0 for current, or any other TF (5,15,30,60,240,1440)

PSAR.Step

0.02 (default) or any value you want

Psar.Maximum

0.2 (default) or any value you want

Use.PSAR.As.StopReverse

True / False

If set to True the EA will monitor any switch in the Parabolic Sar indicator. When PSAR switches from its current direction to the opposite, if you have one (or more) trades opened in the opposite direction of the new direction indicated by the PSAR indicator then the EA will close them all and open a new one in PSAR's new direction with the settings set in the EA's inputs tab. You can set up the PSAR parameters (Time Frame to monitor and PSAR's parameters) on following inputs.

Trail.PSAR.Only.Last.Lot

True or False.

If set to True, this trailing method will be used on the last lot of your position only. It will not affect the first lot(s) in case of a multi lot position.

Trail.With.PS.Start.After.Pips

Any value (in pips).

This is the amount of pips AFTER which the expert will use this trail method.

So if you use for example 40, the trailing mechanism will start after the position has moved to +40.

Initial.1Time.Stop.Move

False or True

If set to True, this parameter add a 1 time stop move possibility (it will kick in once and then stay off) based on the 2 following parameters.

Once.Price.Moves.Pips

Any number of pips

Once price has moved in our favor by the specified number of pips, the EA will then move the stop by the number of pips specified below.

Move.Stop.Pips

Any number of pips

Number of pips by which the EA will adjust the stop.

Trail.HL.Previous.Bars.Count

0 = not used, turned off

You can enter here the number of bars before current bar you wish the EA to calculate the highest high and the lowest low in order to use these as a trail stop. For example if you set this to 5, the EA will calculate the lowest point from previous bar back to 5 bars back and use this level as a trail stop for Long entries. As price bars continue to be formed, this level is recalculate at every bar change and the trail moves accordingly. Hence in an uptrend for example, the trail will adjust with the ongoing uptrend evaluating at each bar change the next lowest level from previous 5 bars and move the trail accordingly.

Trail.HL.Only.Last.Lot

True or False.

If set to True, this trailing method will be used on the last lot of your position only. It will not affect the first lot(s) in case of a multi lot position.

Trail.HL.Start.After.Pips

Any value (in pips).

This is the amount of pips AFTER which the expert will use this trail method.

So if you use for example 40, the trailing mechanism will start after the position has moved to +40.

Trail.By.Steps

True/False

Main switch to enable step trailing. Step trailing will allow you to trail your position by moving for example the stops by 10 pips for every 30 pips price moves in your direction.

For.Every.Price.Pips.Move

Any number of pips

This is where we initially define every how many pips we wish price to move in our direction for the stop to be moved.

Move.Trail.By.Pips

Any number of pips

This is the number of pips we wish the EA to move our stops every time price move by the number of pips specified above.

Trail.Steps.Only.Last.Lot

True or False.

If set to True, this trailing method will be used on the last lot of your position only. It will not affect the first lot(s) in case of a multi lot position.

Trail.By.Steps.Start.After.Pips

Any value (in pips).

This is the amount of pips AFTER which the expert will use this trail method.

So if you use for example 40, the trailing mechanism will start after the position has moved to +40.

Trail.By.ATR

True/False

Main switch to enable ATR trailing. ATR trailing will allow you to trail your position by moving the stops based on a percentage from the pair's daily average true range. Both ATR and the resulting stop loss are displayed on screen.

ATR.TimeFrame

1440 or any other valid TF

(0=Current, 5 = 5 Min, 15, 30, 60, 240 etc...)

ATR.Period

5 or any number of days you wish to use to calculate the ATR.

ATR.Percentage

0.20 or any (decimal) number which reflects the percentage of the ATR that will be used as a trail pips distance.

Trail.ATR.Only.Last.Lot

True or False.

If set to True, this trailing method will be used on the last lot of your position only. It will not affect the first lot(s) in case of a multi lot position.

Trail.By.ATR.Start.After.Pips

Any value (in pips).

This is the amount of pips AFTER which the expert will use this trail method.

So if you use for example 40, the trailing mechanism will start after the position has moved to +40.

Trail.With.StopLine

True / False

If set to True then the value of the Artemis_StopLine indicator will be used as a trail mechanism, **always on current bar**. Place the Artemis_StopLine indicator on the chart to see the trail levels used. These levels are calculated with a formula derivate from the well known Chandelier's exit.

StopLine.ATR.Range

1st setting used by the indicator's ATR calculations.

15 (default) or any value you want

StopLine.ATR.Period

2nd setting used by the indicator's ATR calculations.

14 (default) or any value you want

StopLine.ATR.Factor

3 (default) or any value you want

Trail.Stopline.Only.Last.Lot

True or False.

If set to True, this trailing method will be used on the last lot of your position only. It will not affect the first lot(s) in case of a multi lot position.

Trail.Stopline.Start.After.Pips

Any value (in pips).

This is the amount of pips AFTER which the expert will use this trail method.

So if you use for example 40, the trailing mechanism will start after the position has moved to +40.

If more than 1 trailing method is enabled the EA will move the stops according to the method which will give the tighter stop for current position. Do not forget however that you can specify different 'kick in' levels for each one of the trailing mechanisms.

If none of the all previous methods are used (Trail.Pips=0 and Trail.With.MA=False and Trail.With.PSAR=False, Initial.1Time.Stop.Move =False, Trail.HL.Previous.Bars.Count=0, Trail.By.Steps=False , Trail.With.Stopline=False and Trail.By.ATR=False) then no trailing will be used at all.

To use any trailing method after the position has been secured to break even, just set its **Trail.xxxxxx.Start.After.Pips** parameter to the same amount of pips used with **Move.To.Breakeven.At.Pips**.

Manage.EA.Open.Orders

True or False

Allows the EA to handle trades generated by other EAs along with manual trades. If your own EA with which you place your orders has no extended position handling possibilities or for any other reasons you would prefer Artemis Sitter to handle the trades generated by your own EA, you can set this option to True and the Sitter will take care your trades. You will need to specify the magic number used by your EA in the next option.

EA.Magic.Number.Used

The number your own EA uses for its trades. The Sitter can monitor trades from multiple EAs, just input here there magic numbers separated by a comma.

Handle.All.Stops.Manually

True / False

If set to True ALL trail parameters and ALL stop handling mechanisms (Breakeven, trails) are totally disabled since we are handling our stop loss and take profit level ourselves using the mouse to move these lines.

The only stop related features that continue to work when this option is set to True are the Scale Out mechanism and the initial SL and TP if the position has none set initially.

SEE ADDENDUM 2 TOWARDS THE END OF THE USER'S GUIDE (page 35) FOR DETAILED EXPLANATIONS ON HANDLING STOPS MANUALLY

V1.60 and upwards gives you now a mechanism to automatically close ALL your open trades (no matter the pairs) based on running total profits or total losses. This is called the "basket options" and you have the choice between the 3 different basket options described below.

These parameters work in pairs since the 3 different basket options that can be used have a parameter for profit and a separate one for losses, and it is suggested to only use 1 basket of your choice if you want this feature, making sure all others baskets' parameters are set to 0.

One word of caution. ALL the parameters below are evaluated by the EA if they are set to a non zero value. This means that you *should* only use 1 basket out of the 3 available (but not restricted to), making sure the other baskets' values are set to 0.

If more than one basket have non zero values, the EA will evaluate them all in the order they appear below and eventually close the positions against ANY of the baskets' settings if needed. For instance if you set the Close.Trades.At.Plus.Pips to 200 but also set the Close.Trades.At.Plus.Bal.Pct to 1.5 (%), then the EA will close all your trades when their total gain reaches 200 pips OR if the total gain reaches 1.5% of your balance, whichever comes first.

If you wish to DEACTIVATE this feature (basket closure), just set all following 6 parameters to 0.

BASKET OPTIONS 1

Close.Trades.At.Plus.Pips

0=Do not close = disable this feature.

Any other value will result in the EA closing ALL the manually opened trades, on ALL pairs once the total number of pips gained from all positions compounded, reaches the number specified here.

Use a positive number only, no decimals.

Close.Trades.At.Minus.Pips

0=Do not close = disable this feature.

Any other value will result in the EA closing ALL the manually opened trades, on ALL pairs once the total number of pips lost from all positions compounded, reaches the number specified here.

Use a positive number only, no decimals.

BASKET OPTIONS 2

Close.Trades.At.Plus.Amnt

0=Do not close / disable this feature.

Any other value will result in the EA closing ALL the manually opened trades, on ALL pairs once the total amount of dollars gained (or your account's base currency) from all positions compounded, reaches the amount specified here.

Use a positive number only, decimals allowed but not really needed.

Close.Trades.At.Minus.Amnt

0=Do not close / disable this feature.

Any other value will result in the EA closing ALL the manually opened trades, on ALL pairs once the total amount of dollars lost (or your account's base currency) from all positions compounded, reaches the amount specified here.

Use a positive number only, decimals allowed but not really needed.

BASKET OPTIONS 3

Close.Trades.At.Plus.Bal.Pct

0=Do not close / disable this feature.

Any other value will result in the EA closing ALL the manually opened trades, on ALL pairs once the total amount of dollars gained (or your account's base currency) from all positions compounded, reaches the percentage specified here against your current balance.

Use a positive number only, decimal number allowed

i.e. 2.5 meaning 2.5% of your balance, 3 (or 3.00) meaning 3.00% etc...

Close.Trades.At.Minus.Bal.Pct

0=Do not close / disable this feature.

Any other value will result in the EA closing ALL the manually opened trades, on ALL pairs once the total amount of dollars lost (or your account's base currency) from all positions compounded, reaches the percentage specified here against your current balance.

Use a positive number only, decimal number allowed

i.e. 2.5 meaning 2.5% of your balance, 3 (or 3.00) meaning 3.00% etc...

Close.All.Trades.At.Time

True/False

If set to True, the EA will use next parameter to close all opened trades as soon as the time below is reached.

GMT.Time.To.Close.All

GMT time setting in format HH:MM

Place.a.Trades.At.Time

True/False

If set to True, the EA will use next parameter to place an order as soon as the time below is reached.

GMT.Time.To.Place.a.Trade

GMT time setting in format HH:MM

Order.Type

The kind of order to place at time above.

1=Place a Straddle

4= Place a BuyStop

5= Place a SellStop

6= Place a BuyLimit

7= Place a SellLimit

0= Place an order on a horizontal or a trendline

All orders placed either manually through the 1 click keyboard shortcuts or by the GMT.Time.To.Place.a.Trade parameter, are placed using the "**Pips.Distance.From.Price**" available in the EA settings. The EA will see if the trade to be placed is a long or a short position and it will use **Pips.Distance.From.Price** to place the order xx pips above or below market price at the time of the entry.

Trade.All.Pairs.From.1.Chart

This is a parameter for traders using the same settings on many pairs and trade many pairs at the same time. If set to True, then you can put the EA on just 1 chart and the EA will handle all the positions from all pairs without any problem.

Disable.1Click.Orders

True/False

If set to True, the EA will not check for keyboard key combinations.

This SHOULD be set to true if you wish enter your trades manually without the use of the shortcut keys in order to not trigger any trades by mistake while you use your keyboard for tasks other than trading. Set it to False only if you do not use your keyboard for other tasks and you wish to use the shortcut keys to place any kind of order through this procedure.

Show.1Click.Shortcuts

True/False

If set to True, you will have a summary of the key combinations in the upper right corner of your chart. Setting it to False disables the display (but not the use of the shortcut keys which is disabled only by previous parameter)

1 click - manual orders entry shortcuts

All the key combinations used for placing new trades are used by pressing the left ALT key, holding in pressed and pressing the letter or number (**Use the numbers on the Numeric Key Pad to the right of the keyboard only and make sure the NumLock is ON**) corresponding to the kind of order you wish to place.

Attention. For these key combinations to work and trigger the corresponding orders, ticks/data feed must be fluently coming in. If price is not moving or moving extremely slow, you will need to retry again until you see the orders placed on the screen, or just keep pressed the Alt and the numbered key constantly. Be careful to not overdo it since you may trigger that way more than 1 order if the 'Use.Pop.MSN.Alerts' is set to False. If it is set to True, it will prevent multiple orders as long as the MSN like message box is on your screen.

You are also advised to not use your keyboard for other tasks in parallel since at times, what you may type in can trigger a key combination and consequently the related order.

ALT +1 = Open a STRADDLE (1 long + 1 short pending order)

ALT +2 = Open a BUY (Market)

ALT +3 = Open a SELL (Market)

ALT +4 = Open a BUY STOP

ALT +5 = Open a SELL STOP

ALT +6 = Open a BUY LIMIT

ALT +7 = Open a SELL LIMIT

ALT +9 = KILL ALL TRADES

ALT +R = STOP & REVERSE

ALT +0 = Open a position on horizontal / Trend line

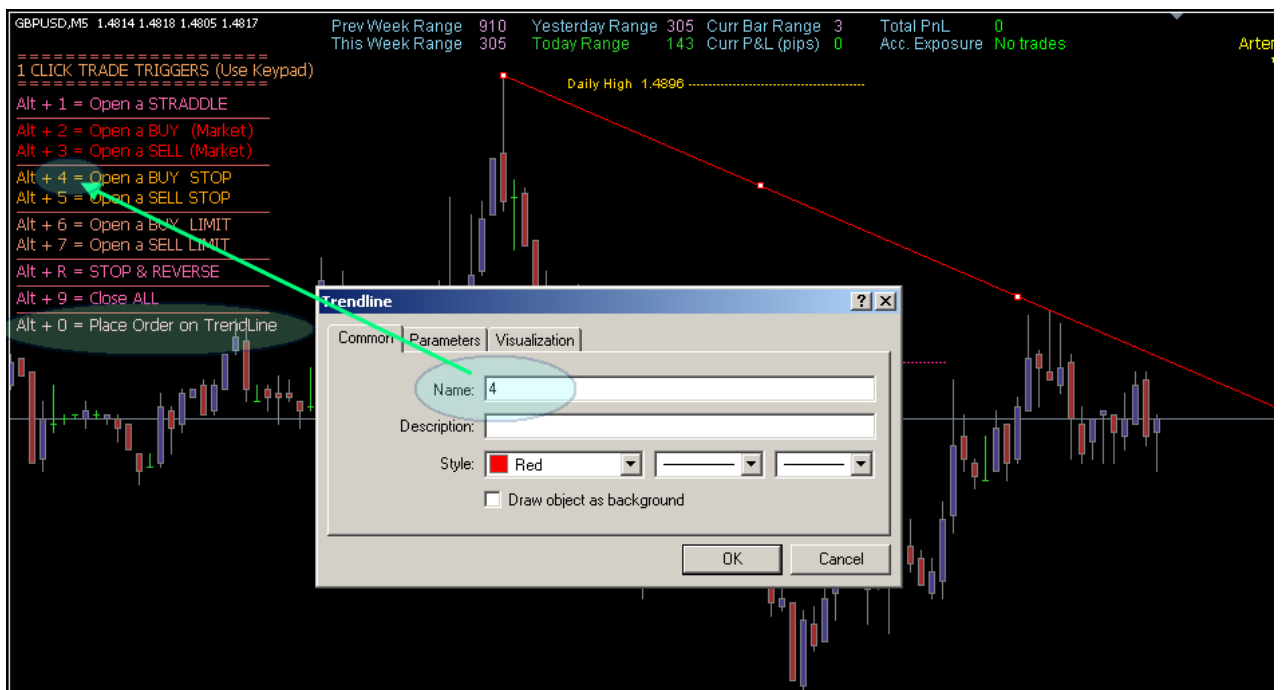
(This is a new feature appearing in v1.90)

You can draw a horizontal line or trend line at any level you wish on your chart. This can be a major support / resistance line or a custom ascending or descending trend line.

Once you have your line defined on the chart, all you have to do is to name the line with a number corresponding to the type of order you want the EA to place at that level when you will press the ALT+0 (zero) key combination.

In the example below, the trend line has been named **4**, so the EA knows we need to open a BUY_STOP order which corresponds to the Alt+4 1 click key combination.

So if after you have drawn your trend line, you press Alt + 0 at any time you see fit, the EA will find the trend line, read its name (4) and it will know it must open a BUY_STOP order at the value of the trend line on previous candle.



The remaining settings are pretty much explicit and are described in the image below



Version History

v3.30

- A bug involving the trail time frames and the Actual.TPx.Lots has been fixed. Multiple magic numbers can now be used to handle trades from more than 1 EA

v3.20

- A Time Frame parameter has been added to all trail methods calculations not having one already, so the readings and the stops are not modified when we change time frames up and down while the EA manages the trades.

v3.10 (major version change due to the bug fix and new functionality)

- The EA can now handle all the trades from all the pairs from just one chart.
- The improvement from v2.10 has been taken to a step further.

All the trailing mechanisms available can now be used at different levels each one. This provides a huge flexibility and gives new functionality and potential since different trailing methods can kick in at different levels.

- A bug which prevented custom take out lot sizes to function correctly was fixed when used with the new option to trade all pairs from 1 chart.

Trailing positions mechanism is now more flexible since orders can start to be trailed from any distance from entry price instead of only after break even.

v2.10

- Trailing positions mechanism is now more flexible since orders can start to be trailed from any distance from entry price instead of only after break even.

v2.00

- All pending orders can now be handled manually with the mouse (not only SL and TP levels but the main order itself).
- Possibility to close all opened trades at a specified GMT time
- Possibility to place a predefined order type (even a straddle) at a specified GMT time
- A new double ATR based trail has been added along with the addition of the corresponding indicator for visual confirmation

v1.91

- Code Optimization.

v1.90

- Traders can now use a custom horizontal line or a trend line to place an order on the chart at any time using the ALT+0 shortcut key.
Just draw your line at any time, name it using a number from the 1 click shortcut based on the kind of order you wish to place (i.e for a Straddle name it 1, 4 for a Buy Stop, 5 for a Sell Stop, 6 for a Buy Limit, 7 for a Sell Limit) .

- Step Trailing now supports position scaling. When a position with multiple lots is scaled out, the step trail continues to cover the remaining lots.
- New Trail possibility based on ATR

v1.84 through v1.89

- Code Optimization.

v1.83

- Enables a combination of multiple trail mechanisms, using the 'tighter' one that will be available from the methods used.

v1.82

- Adds 3 more Take Profit levels to give more flexibility to various exit strategies

v1.80

- Fixes a bug with ECN brokers (MT4 brokers using 3 and 5 decimals / digits in their quotes instead of the 'usual' 2 and 4 digits

v1.79

- Fixes a bug with when scaling out using the Actual.TPx.Lots parameters

v1.78

- Fixes a bug with the Trail.Pips parameter resulting in closing trades at +1
- Stop Loss and Take Profit Levels handled directly on the chart with your mouse. Select the TP and / or the SL lines placed by the EA on the screen and

simply move them to the desired levels. Your position's stops will be modified to these new levels automatically.

- 1 click Manual Order Entry Management.
You can enter any kind of order as well as a straddle with just 1 keyboard key.
All shortcut keys displayed on screen as visual help
- 1 click Panic Close All Positions allowing you to immediately all open positions.
- Daily and Weekly pivots displayed on screen as well as daily open, high and low in a very elegant way without cluttering the chart.
- Option to trail by high/low from xx bars ago
- Option to scale out a position by non fixed lot sizes.
- Option to trail by high/low from xx bars ago
- Option to trail by steps (for every x pips price moving, adjust SL by y pips)

v1.75

Fixes a serious bug with the Virtual.SL/Actual.SL.

Actual.SL was not working as expected.

v1.70

On screen display adjustments.

v1.60

- Minor bug fixes on display + Pip count now matching pips x lot size in display.

v1.50

- Adds options to close all open positions – basket of trades (all pairs) – either in profit or in loss, with 2 different parameters 1 for profit and 1 for loss, based on :
 - a) a specified number of pips
(i.e. 150 pips profit and 100 pips loss for all open orders and pairs)
 - b) a specified amount in account's currency
(i.e. \$1500 profit and \$1000 loss for all open orders and pairs)
 - c) a specified percentage from account's balance
(i.e. 2.50% profit and 2.00% loss for all open orders and pairs)
- Code adjusted to support 3 and 5 digits Brokers
- Adds Pivots (daily and weekly) proximity sensor and warning.

v1.40

- Add PSAR trailing.

v1.30

- Fixes a bug which prevented the EA to run correctly if the EA's settings were not correctly set and which unfortunately did not display any message. This is why the EA did not work if for example the TPs were not set correctly according to the Lot.Size / Take.Out ratio.

- Fixes a (small) bug when trailing a position with the use of a moving average. The spread was added to the wrong side.

- Adds a manual Stop & Reverse feature which allows the closure of a currently opened position and initiation of a new position in the opposite direction. This is done by pressing left Shift+R

- Adds an automated Stop & Reverse feature based on the Parabolic Sar indicator which is fully configurable in the EA's parameters

Licensing

All versions, Standard and Professional are free to use on a demo account, without any restrictions and users can evaluate the EA as long as they want until they are confident they have a great trading tool in their hands. They will also have full support through my email Yannis.21@gmail.com for any question or problem they can encounter, or help for specific settings that match their manual strategies.

However, note that new upgrades and new features will only be available on the PRO version which will continue to evolve.

Annual Fees per version (for 1 live account):

Artemis Sitter STD : \$100

Artemis Sitter PRO : \$200

Additional licenses for additional live accounts can be acquired with 50% discount for each additional license required after the first one.

STD registered version includes full support and updates which include a bug fix. The PRO version additionally includes any new version (beside a bug fix) that will come out within the subscription period. Furthermore, Traders under the PRO license can formulate requests for additional features that can be based on their personal trading style or system. These requests will be evaluated and could be coded in a next version either free of charge or against a nominal fee depending on what is asked and if it is something that could be valuable for all the users.

All annual subscriptions are payable to my PayPal account jsfero@otenet.gr. Please mention the EA's name, desired version and live account number in your payment. The subscriptions are non refundable and delivery is usually within 2 hours from payment from 06.00 GMT to 16.00 GMT, but in rare circumstances it could take longer, up to 48 hours.

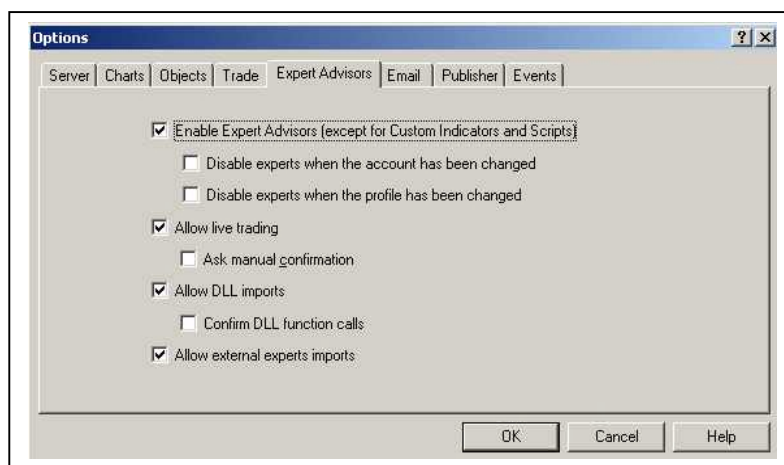
Caution: In case a user closes an account and opens a new one or transfers funds from one account to another, the initial license will not be changed unless he can provide an email from the broker stating that the account for which the EA was initially licensed was indeed closed. In that case he will

get a new license for the new account free of charge, otherwise the account change will be perceived as a request for an additional new license at 50% the initial fee.

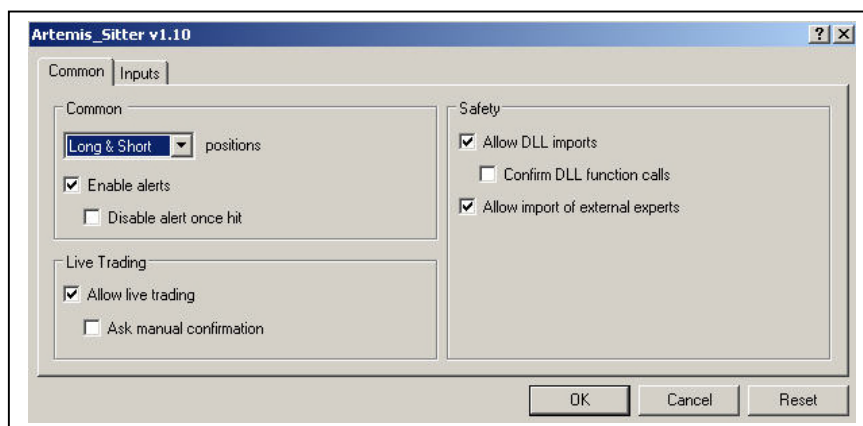
Error Codes and what they mean

9101 / 9103 - Your MT4 and/or EA check boxes are not correctly set

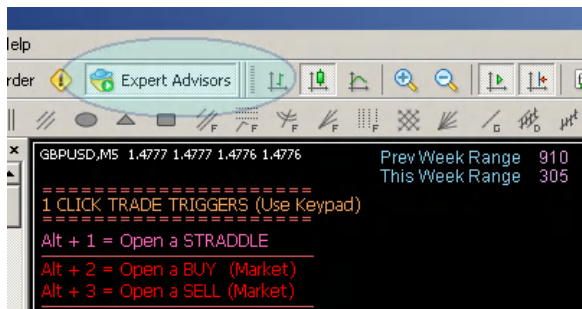
1. Press CTRL+O to open the MT4 Tools/Option window
2. Click on the 'Expert Advisors' tab page
3. Set your check boxes as picture below



4. Press F7 to open your Expert options window
5. Click on the "Common" tab
6. Set your check boxes as picture below



9102 - The expert is Disabled. Check the button as shown below.



9105 - The expert has expired.

9110 - The expert is not licensed for a live account. See licensing page [29](#).

9115 - The expert is not licensed for a live account. See licensing page [29](#).

6200 - The total TP.Lots do not match your Lot.Size
(Actual.TP1.Lots+Actual.TP2.Lots+Actual.TP3.Lots+Actual.TP4.Lots+
Actual.TP5.Lots+Actual.TP6.Lots MUST match Lot.Size)

6201 - Scale.Out.Lots CANNOT BE 0.00 OR LESS

6202 - The expert is disabled because the Lot.Size and Take.Out.Lots parameters are not consistent with each other.
This means that Lot.Size divided by Take.Out.Lots leaves a remainder or gives a decimal value. Refer to page 10 of this user's guide for detailed explanations.

6203 - Actual.TP1 CANNOT BE 0

7301 - 1 TP level is set to 0 when it should have a non 0 value.
For example, if your Lot.Size is set to 0.2 and Take.Out.Lots is set to 0.1 this translates to 2 positions and that the EA expect to find a value in both TP1 and TP2. Getting this error probably denotes that TP2 is set to 0.

7302 - 2 or 3 TP levels are set to 0 when they should have a non 0 value.
Same as above. TP2 and / or TP3 are set to 0 when they should have a value.

7303 - 1 TP level has a value but it should actually be set to 0.
For example, if your Lot.Size is set to 0.2 and Take.Out.Lots is set to 0.1 this translates to 2 positions and that the EA expect to find a value in both TP1 and TP2 BUT NOT in TP3. Getting this error probably denotes that TP3 is set to a non 0 value when it should be 0.

7304 - Actual.TP1 CANNOT BE 0
Same as above. TP3 and / or TP2 have a value when they should be set to 0.

Artemis Sitter Expert Advisor

Comparative sheet between versions

(All On Screen display options are optional and can be hidden if desired)

STD	PRO	Feature	Details
√	√	Multiple lot size positions supported	The EA can baby sit a trade with any lot number standard, mini or micro. Full support for quotes with 3 and 5 decimals and ECN/MT4 brokers
3	6	Scale out positions	It can break an initial position up to 6 parts (3 for the STD version) allowing 6 different take profit levels (3 for the STD version)
√	√	Masked SL and TP	Initial SL and TP can be masked, the EA will monitor internally the real SL and TP values, the broker will see only 'virtual' ones
√	√	Secure Positions to Breakeven	Can move SL to entry price + xx pips in order to secure your position
√	√	Standard Trail Mechanism	Can trail a position via normal trail mechanism (xx pips below price) either from start or after position has been secured / moved to breakeven
X	√	Advanced Trail Mechanism	<ul style="list-style-type: none"> a) Through fully configurable Moving Averages Stop will follow the MA level b) Through fully configurable Parabolic Sar Stop will follow the PSAR level c) Initial 1 Time stop move. Stop will be moved 1 time by xx pips when price moves yy pips in our favor d) Through previous xx bars High / Low Stop will follow the Low previous xx bars for a long, the High of previous xx bars for a Short e) Through Step Trailing Stop will be moved by xx pips for every yy price move f) Through Chandelier's exit formula Trailing Stop will be moved according to the Artemis_StopLine indicator.

			g) Through ATR Trailing Stop will be moved by a percentage of its daily range (displayed on screen according to the settings used)
X	✓	Trail can start at any distance	All trailing methods can now be set to start at any desired distance from entry price
X	✓	Stop and Reverse Feature	Close a position and open the opposite one, either through a keyboard key combination or Psar switch
X	✓	SL and TP directly adjusted on screen using your mouse	You can move and adjust SL and TP levels by clicking on them and moving them to the desired levels just using your mouse
X	✓	Remove all open orders based on a predefined time of the day	You can define a specific time (in GMT) at which all open orders will be automatically closed by the EA
X	✓	Place any kind of order including a straddle (both a long and a short pending position) at a specified time of day.	You can define a specific time (in GMT) at which the EA will place automatically for a pending order. This can be any type of orders including a straddle, a buy stop, a sell stop, a buy limit and a sell limit. This order is placed at a predefined by you distance in pips from market price at the time of entry.
X	✓	Trade Basket options	3 Basket options available to shut down ALL trades when profit or loss reaches a predefined level allowing to close all trades at + or – a) xx total number of pips gain or loss b) xx total dollar amount gain or loss c) xx percentage based on account's balance
X	✓	Immediate order entry	You can use predefined keyboard shortcut keys to trigger any kind of order. Shortcuts are visible on screen.
X	✓	Order Entry based on custom horizontal lines or on custom Trend lines.	Using just a 1 click keyboard combination, you can use your own custom horizontal or trend lines to place an order at any time you see fit. Orders can also include a straddle or any type of stop or limit order.
X	✓	On screen upcoming news info	You can have a visual reminder of upcoming news events along with the expected impact / volatility

X	✓	MSN like alerts and email notifications	Displays all EA major actions in a nifty alert box and sends an email informing you of these actions if you are not on your computer.
✓	✓	On screen Pivot display	You can have neat and clear daily pivot display on the chart
X	✓	On screen Pivot proximity warnings	You can have warnings on screen when price comes close to a pivot (daily and weekly)
X	✓	On screen trade history display	You can have all your trades clearly shown on screen with entry and exit levels and the profit or loss realized on each trade
✓	✓	On screen enhanced informations	A multitude of valuable on screen display from market times, currency ranges, account and currency P&L etc...
X	✓	Full Support and life time new updates	Only the PRO version will continue to evolve and all traders registered under this version will receive full support and all new upcoming versions free of charge as long as they remain subscribers. Furthermore, requests from the traders who would need adjustments or new features are evaluated and could be coded in next version, either free of charge or with a nominal fee depending on what is needed and if this addition can be valuable to all the users.

==== ADDENDUM 2 ====

The handling your Pending Orders (entered through the 1 click shortcuts) and any Stop Loss and Take Profit using your mouse. This is a very nifty feature which allows you to move the SL and the TP levels of each trade directly on the chart using simply your mouse.

By moving for example the SL line on the chart, the EA automatically modifies your stop loss directly in the order (you will see it change in the Terminal window) so it matches exactly the current level of the SL line where you leave it on the chart.

This feature gives you the total liberty to evaluate yourself where exactly you wish the stop to be placed and most important, it changes the order automatically without any other time consuming moves from your side.

Here is how it works.

As soon as the parameter named Handle.All.Stops.Manually is set to True, 2 new lines will be automatically drawn on the chart, 1 line for current SL and 1 line for current TP.

After double clicking on the lines to 'select' them (you will see a small dot at both ends of the line), you will then be able to move them at will, up and down on your chart.

You will see that the EA automatically modifies the related order according to the line you move (SL or TP) and the level you just leave the line put will be the new order's value for the SL or TP accordingly. Simple isn't it?

Pictures below are self explanatory.





Order	Time	Type	Size	Symbol	Price	S / L	T / P	Price	Commission	Swap
4335266	2009.01.08 14:14	sell	0.30	eurCHF	1.4941	1.5041	1.4860	1.4969	0.00	0.00

Balance: 6 989.71 Equity: 6 913.16 Margin: 408.63 Free margin: 6 504.53 Margin level: 1691.79%

==== ADDENDUM 2 ====