

Artemis_Sitter v1.91
MT4 Expert Advisor
Standard / Pro Editions

Copyright © 2005-2009, Yannis Sferopoulos
Yannis.21@gmail.com

You must read following acknowledgment and disclaimer very carefully and **if you do not agree in full with the terms and conditions stated in both of them, DO NOT PROCEED WITH THE INSTALLATION AND / OR THE USE OF THE EXPERT ADVISOR**. The use of the expert advisor explicitly indicates that you have read and agreed on all terms and conditions stated in the disclaimer and the acknowledgment below.

ACKNOWLEDGEMENT

Artemis_Sitter© is the property of the author, Yannis Sferopoulos. The expert advisor and any related software or related document is owned by the author and protected by copyright law and international copyright treaty. Therefore, you must treat both the software and the documentation like any other copyrighted material.

You are granted a non-exclusive license to use the software, but it may not be copied, rented, leased, diffused or transferred in any other way. You may not distribute, copy, emulate, clone, rent, lease, sell, modify, decompile, disassemble, or otherwise reverse engineer, or transfer the software, or any subset of it. All rights not expressly granted here are reserved by the owner.

Purchase or rental of this product does not transfer any right, title, or interest in the software. You are hereby notified that the software product is protected by EEC Copyright Law and you may be held responsible by the author for any infringement of such rights or violations of this agreement and will be prosecuted to the maximum extent possible under law. It is forbidden to distribute this software or the documentation, to third parties, including but not limited to, uploads to user groups, forums, shareware, eBay, and in general any web sites, without the explicit written authorization from the author.

DISCLAIMER

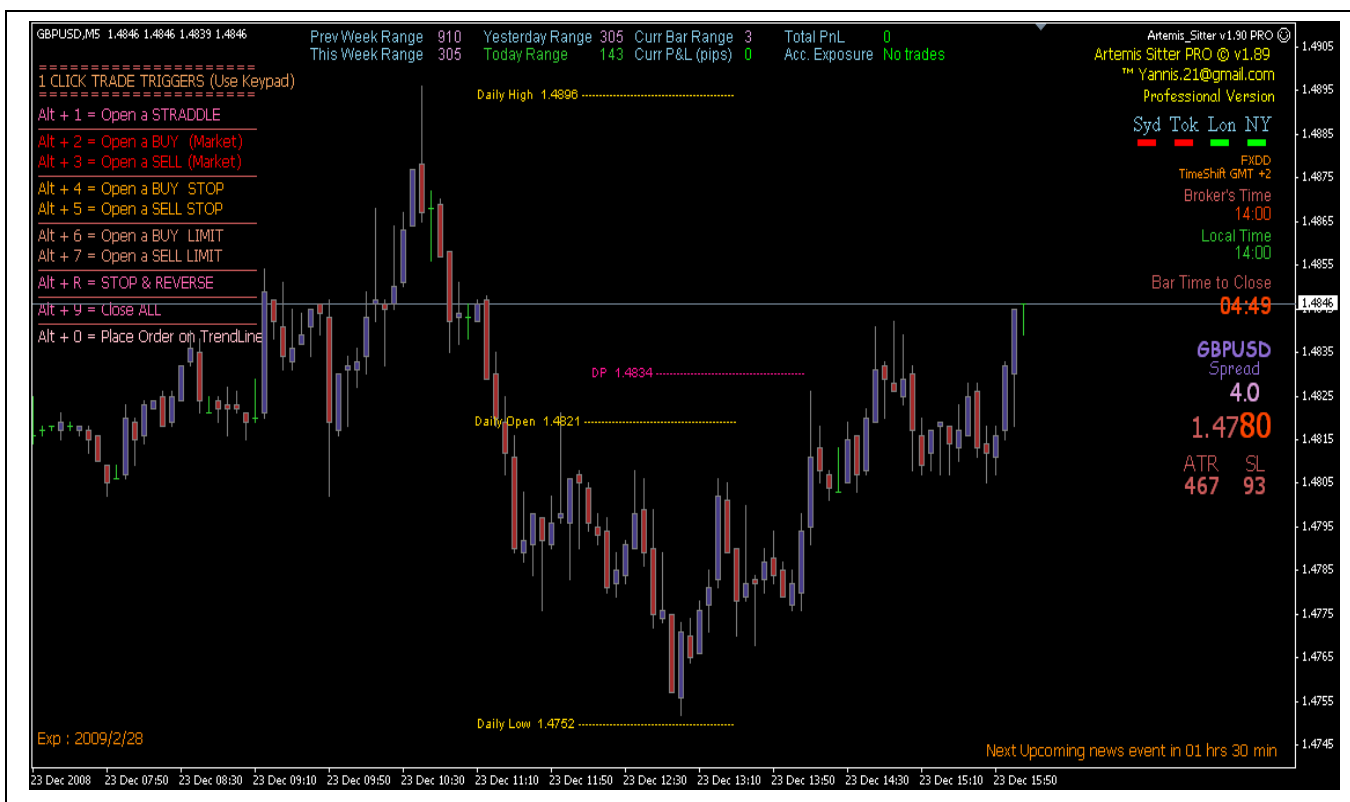
Any information herein and the use of the expert advisor should not be regarded by recipients as a substitute for the exercise of your own judgment. Any opinions expressed in this content are subject to change without notice and the author is not under any obligation to update or keep current the information contained herein.

Spot foreign currency transactions, options, derivative products and futures are not suitable for all investors, and trading in these instruments is considered very risky. Past performance is not necessarily indicative of future results.

Try the Artemis_Sitter expert advisor on a demo account first, until you fully understand how it works and verify by yourself that it works correctly and as you expect BEFORE putting any real money in it. An immense deal of work has been done to assure that all information supplied in this document and elsewhere is as accurate as it can be, and in the same time, the software including but not restricted to the expert advisors that can be provided as demo or registered version, is functioning correctly without problems and bugs.

However, the author, any of his representatives, associates or partners do not give any expressed or implied warranty as to its bug free operations or accuracy and will not accept any liability for errors, bugs, omissions or any other problems that could come up from the use of the software, and cannot and in any way, be held responsible for any damage, expenses, liability or losses that a user might sustain. Users are in fact advised of the possibility of such damages, losses, or expenses and of course, neither the EA nor the information contained herewith constitutes any solicitation or advice for trading.

Artemis_Sitter v1.91 EA



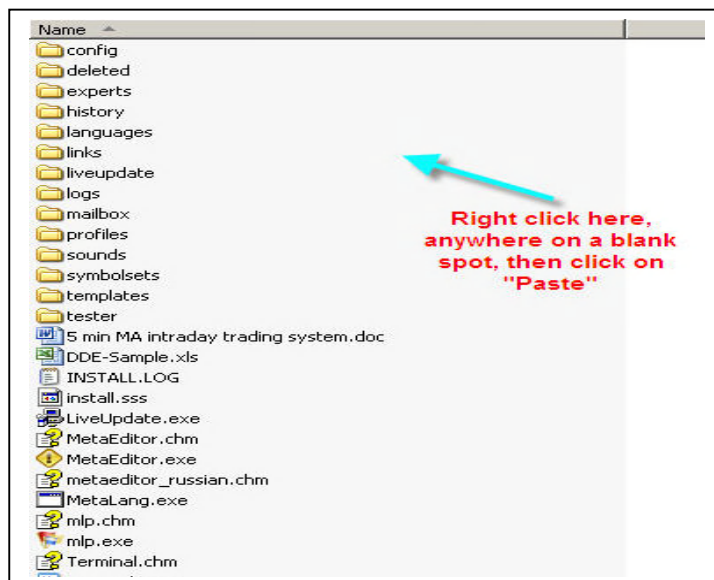
INSTALLATION NOTES

1. Close your MT4 instance
2. Unzip the file Artemis Sitter.zip to your desktop; you should see a new folder named Artemis Sitter. Double click to open this folder.
3. You should now see a folder named **Experts** and another one named **Pop**.
 - Right click on the '**Experts**' folder, and click on 'Copy'
4. In a windows explorer window, locate your actual MT4 folder, something like C:\Program Files\InterbankFX (or similar depending on your broker and where you initially installed your MT4 platform).
5. Open this MT4 main folder, you should see folders named Config, Deleted, Experts, History, Languages, Links etc.... and you should see files named Metaeditor.exe, Terminal.exe etc...

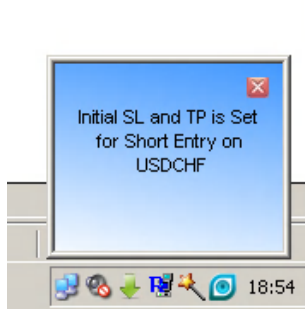
In a blank space anywhere in this window (careful to not click on any folder or on any file), right click and choose 'Paste'

You will see a confirmation message telling you that there is already a folder named Experts and if you want to overwrite it, simply say yes (or yes to all), don't worry, none of your files will be harmed or replaced.

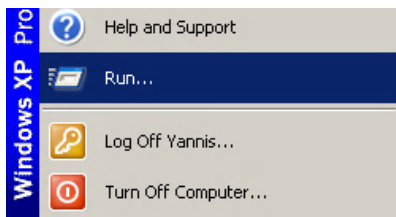
Confirm any other message if any, this will place the EA and all the needed files in the right folders



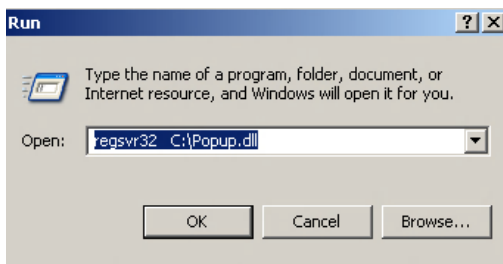
6. Going back to the folder where you unzipped the files, you will see the folder named **Pop** (see step 3). Open it and you will find 2 files inside this folder, named **Pop.exe_** and **Popup.dll_**. These are the 2 files needed for the MSN like info box. **First you need to rename these files by removing the last dash _ at the end of their names.** This has been done so attachments don't get blocked by email clients. The files must read **Pop.exe** and **popup.dll without the underscore at the end.** Place these 2 files in the root directory (main folder) of your **C:** disk. This allows you to have all the EA messages popping up in a small MSN like box to the lower right corner of your screen.



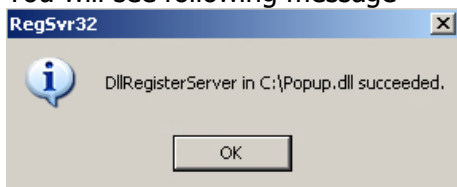
Once you have copied both files to your C:\ drive, you will need to register the popup dll file. To do that, you open the 'Run' dialog box – click on 'Start' then 'Run'



and type the following: `Regsvr32 c:\popup.dll`

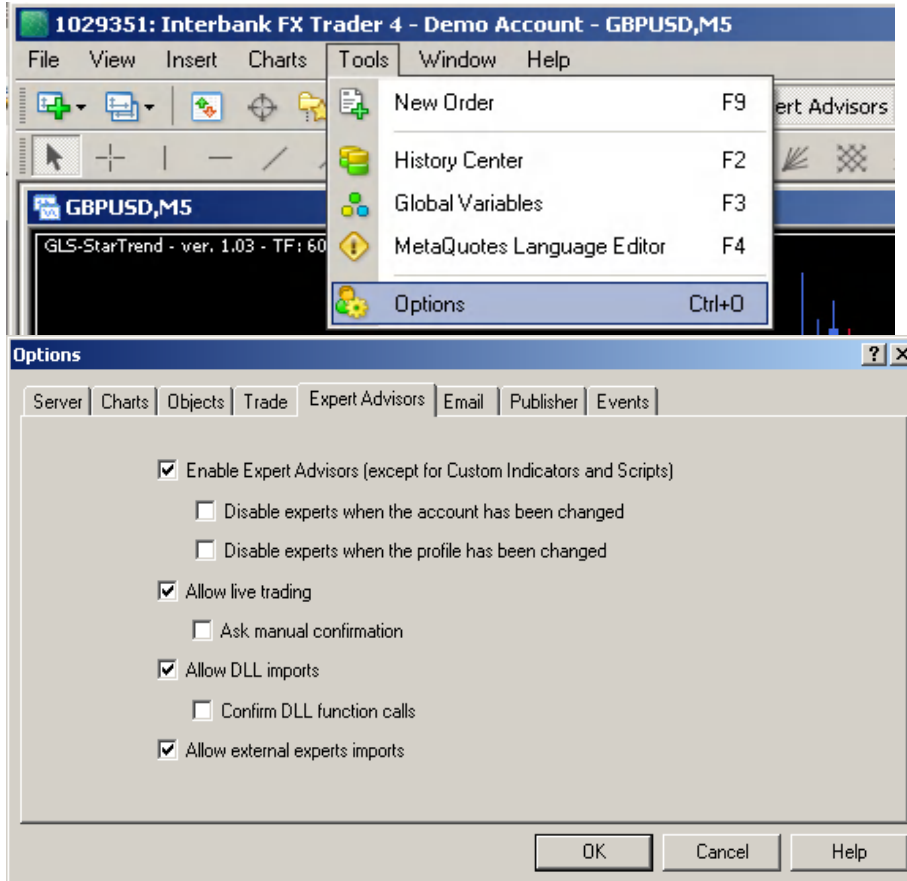


You will see following message



7. Open your MT4 instance; you should see a new expert named Artemis_Sitter v1.91 Pro. The EA will be grayed out but it doesn't matter. This is because the source file is not provided, but the EA will function properly.

Go to Tools/Option on your mt4 menu and make sure that the settings on the Expert Advisors tab are set as follows:

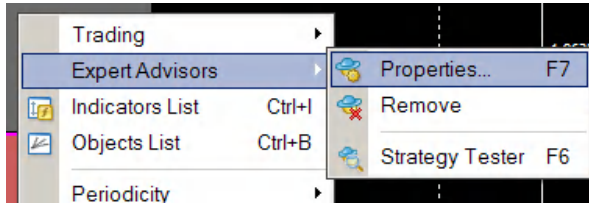


MAKE SURE YOU HAVE THE “EXPERT ADVISORS” BUTTON ENABLED

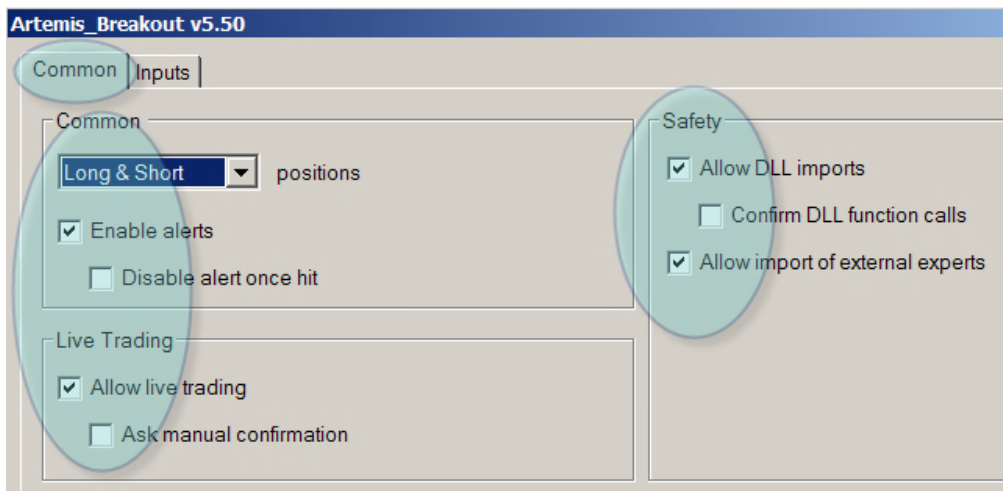


If everything is ok, you should see the smiling face on the top right corner of your chart just after the EA's name.

Right click on your chart, click on **Experts Advisors** and then **Properties** or press F7



From the **Common** Tab Page, get sure that **ALL** the checkboxes are checked as follows



8. Put the EA on the chart(s) where you want it to babysit your trades; don't forget to set up the EA parameters to your own personal liking according to the way you trade and mostly to exactly match your trade lot size.

What Artemis Sitter **CANNOT** do for you

The EA is not an automated trading system, meaning no trading logic is coded within so

it will never place a new order by itself

(unless you manually use the keyboard shortcuts available in the PRO version)

What Artemis Sitter CAN do for you

**The options and settings described below are not available in all the versions.
See comparative sheet between versions at the end of this document.**

Version history is available on page 22 and licensing information on page 24

1. Description

The EA is designed to be used **as an assisting tool** for manual trading, meaning **it will babysit and manage any open trade manually entered** and it will disregard any existing trade which might have been triggered by another EA as long as this other EA has used a Magic Number to differentiate its own trades. In short, Artemis_Sitter will handle any order that has no Magic Number (manual entries have none, or to put it better, their Magic Number equals 0).

It will allow you to place any kind of order by just using 1 key from your keyboard, to move your stops using your mouse, to trail positions in various ways and many other utilities described below.

Artemis_Sitter will do the following things once you put it / enable it on a chart:

- It will immediately set both a “masked” SL and TP far away from your real settings, hence disallowing the broker to actually ‘see’ your real stops and profit levels (but it will internally monitor your real settings and close position accordingly if needed), or it can simply set your real SL and TP if you choose to do so, according to your settings.
- It will automatically secure a position, moving the stop loss above or below (depending on the position) your entry price by any number of pips you wish to secure.
- It will trail a position, moving the SL according to the number of pips you wish to use as a trail.
- The trail can optionally start either from the beginning of the trade, or after the position has been secured (moved to break even) depending on your settings.
- You can optionally define any moving average to be used as a trail. For example you could use 50SMA as your trail, or any other MA since you can define both the period / length and the MA type (Simple, Exponential, Smoothed or Weighted)

- You can optionally use the PSAR indicator commonly used with MT4 to trail your positions.
- You can optionally use the previous xx bars High or Low as a trail mechanism.
- You can optionally use a step trail mechanism. It will move your stops by xx pips for every yy pips price moves in your direction.
- You can use multiple lot positions since Artemis_Sitter provides a scale out mechanism and up to 3 different TP levels. This means that it will automatically start to close portions of your initial lot size every time a TP level is reached.
- Artemis Sitter provides a quick Stop & Reverse mechanism. You can reverse any trade in progress using a keyboard combination. The EA will close currently opened trades and initiate a new one in the opposite direction with the settings entered in the EA's inputs. This is done by pressing the left **Alt** key (left side of the keyboard) and the key '**R**' at the same time → **Alt+R**
If there's 1 trade active, pressing **Alt +R** will close this trade and open a new one in the opposite direction. If multiple trades are open, the EA will close them all and open a new one in the opposite direction only if all the open trades are in the same direction.

If the Use.PSAR.As.StopReverse parameter is set to true, the EA will do that automatically on any PSAR change of direction.

- There is also an automated Stop & Reverse mechanism based on the Parabolic Sar indicator. If you enable this feature, then once Artemis Sitter sees that PSAR changes direction and its new direction is against your trade(s), it will close this trade(s) and initiate a new one in the direction of the indicator.
- **You can use your mouse to move your stops or take profit level directly on the chart, without going through the fuss of editing your order the 'usual' way.**
- **You can use keyboard shortcut keys to place any kind of order and even a straddle (both long and short pending orders).**
- It will also provide a multitude of visual onscreen information for many things amongst them, upcoming news showing you the impact of the news in corresponding color (red for very volatile, orange for medium), your trade's history flagged on the chart with the P&L for each one etc...

2. Settings / Parameters available

Lot.Size Any number of pips, but it should match your manual position lot size. You can use whatever lot size you want to trade with either full lots or fractional lots (mini or micro) depending on your broker. The value here will be use along with the "**Take.Out.Lots**" parameter below to allow the EA to eventually support scaling out positions (close partial values of the initial lot size by sizes defined by following parameter).

Take.Out.Lots any value (in pips) but it MUST BE AN EXACT DIVISOR of Lot.Size. The value here will be used by the expert advisor to partially close a multi lots position, each time it has to do so, which in turn depends on the various take profit levels below.

i.e. Lot.Size=1.20 → Take.Out.Lots=0.40 (3 x Take.Out.Lots exactly equals Lot.Size)
Lot.Size=1.00 → Take.Out.Lots=0.50 (2 x Take.Out.Lots exactly equals Lot.Size)
Lot.Size=1.00 → Take.Out.Lots=1.00 (1 x Take.Out.Lots exactly equals Lot.Size)
Lot.Size=0.60 → Take.Out.Lots=0.60 (1 x Take.Out.Lots exactly equals Lot.Size)

Wrong-> Lot.Size=1.20 → Take.Out.Lots=0.50 (2.4 x Take.Out.Lots = Lot.Size)

As an alternative, you can now define your own scale out position for each one of the 3 TP available instead of using fixed scale out portions of your lot.size through the use of the Scale.Out.Lots parameters.

This is done with the use of the 3 parameters named

Actual.TP1.Lots, Actual.TP2.Lots, Actual.TP3.Lots.

If the 1st one of these 3 parameters has any non 0 value, then the EA will use the lot sizes specified in these 3 parameters to scale out your initial position (Lot.Size parameter). If they are set to 0, then the EA will use the Scale.Out.Lots parameter to evenly scale out your initial position.

But here also, these 3 parameters MUST be in accordance with your 3 take profit levels. This means that if you choose for instance to scale out an initial position of 0.7 lots, into 2 parts only, then you can specify for instance 0.4 for Actual.TP1.Lots, set Actual.TP2.Lots to the remaining 0.3 lots (0.4+0.3 = 0.7) and **you MUST set Actual.TP3.Lots to 0.**

In the same way, if you would like to close the same initial position of 0.7 lots, into 3 parts, then you could use for example 0.3 for Actual.TP1.Lots (which will aim at the 1st TP – actual.TP1), 0.2 for Actual.TP2.Lots (which will aim at the 2nd TP – actual.TP2) and 0.2 for Actual.TP3.Lots for the 3rd TP level.

It's up to you to decide if you want to split a position into equal parts using the **scale.out.lots parameter** (and setting Actual.TP1.Lots, Actual.TP2.Lots and Actual.TP3.lots to 0), or if you want to use non equal parts and in this case – no matter the value of the Scale.Out.Lots – set up your own lot values for each TP through the use of the 3 Actual.TPx.Lots.

IT IS ESSENTIAL THESE PARAMETERS ARE SET CORRECTLY AND ALSO SET ACCORDING TO THE LOT SIZE YOU USE FOR YOUR MANUAL TRADES

For example, if you have set the EA to handle a position's Lot.Size=1.2 lots with a scale out of 0.4 but your actual position is using a lot size other than 1.2, then you could face malfunctions in the EA's various functions especially in the scaling out mechanism.

Actual.TP1 any value (in pips).
Actual.TP1.Lots (discussed above) .

Actual.TP2 any value (in pips).
Actual.TP2.Lots (discussed above) .

Actual.TP3 any value (in pips).
Actual.TP3.Lots (discussed above) .

These are the 3 different profit targets you can optionally use with the expert. Each value is defined in pips from entry price, but you are not obliged in any way to use all 3 values. This depends on your initial **Lot.Size** and the **Take.Out.Lots** params and you can either use only TP1, TP1 and TP2 or all 3 TPs.

The Actual.TP1 is mandatory and cannot be 0.

The 2 others can be 0 or any number of pips, depending on how many "sub positions" you want your main trade to be broken in.

If your trade is to be handled as 1 position (Lot.Size = Take.Out.Lots) then both Actual.TP2 and Actual.TP3 MUST BE SET TO 0.

If your trade is to be handled as 2 positions (Lot.Size = 2 x Take.Out.Lots) then Actual.TP3 MUST BE SET TO 0.

Let's see some examples to make things clear. What is important to have in mind is that all the values used with these parameters must match. You **must** give Actual.TP2 a value other than 0 **IF** your **Take.out.Lots** value is **HALF** your **Lot.Size** (and keep TP3 to 0), and accordingly you **must** give a value other than 0 to **Actual.TP3** if your **Take.Out.Lots** is exactly at **1/3** than your **Lot.Size**

So here are some examples, with combinations for previous and current parameters depending on how you would like your trades to be handled. You can have the EA:

1. Babysit a position which will be fully closed **in one time**, at Actual.TP1 = at +15:

- **Lot.Size** = 1.60
 - **Take.Out.Lots** = 1.60 (=Lot.Size)

- **Actual.TP1** = 15
 - **Actual.TP1.Lots** = 0
 - **Actual.TP2** = 0
 - **Actual.TP2.Lots** = 0
 - **Actual.TP3** = 0
 - **Actual.TP3.Lots** = 0

OR

- **Lot.Size** = 1.60
 - ~~**Take.Out.Lots** = 1.60 (=Lot.Size)~~ **Any value**
 - **Actual.TP1** = 15
 - **Actual.TP1.Lots** = 1.60
 - **Actual.TP2** = 0
 - **Actual.TP2.Lots** 0
 - **Actual.TP3** = 0
 - **Actual.TP3.Lots** = 0

2. Babysit a trade which will be handled in 2 steps (Lot.Size = Take.Out.Lots x 2) and will be partially closed at 2 different times, one portion (0.60 lots) at +15 and remaining at +25 :

- **Lot.Size** = 1.20
 - **Take.Out.Lots** = 0.60 (=Lot.Size)

- **Actual.TP1** = 15
 - **Actual.TP1.Lots** = 0
 - **Actual.TP2** = 25
 - **Actual.TP2.Lots** = 0
 - **Actual.TP3** = 0
 - **Actual.TP3.Lots** = 0

OR

- **Lot.Size** = 1.20
 - ~~**Take.Out.Lots** = 1.20 (=Lot.Size)~~ **Any value**
 - **Actual.TP1** = 15
 - **Actual.TP1.Lots** = 0.70

- **Actual.TP2 = 25**
- **Actual.TP2.Lots = 0.50**
- **Actual.TP3 = 0**
- **Actual.TP3.Lots = 0**

3. Babysit a trade which will be handled in 3 steps (Lot.Size = Take.Out.Lots x 3) and will be partially closed at 3 different times, one portion (0.40 lots) at +15, second portion (0.40 lots) at +25 and remaining at +50:

- **Lot.Size = 1.20**
- **Take.Out.Lots = 0.40 (=Lot.Size)**

- **Actual.TP1 = 15**
- **Actual.TP1.Lots = 0**
- **Actual.TP2 = 25**
- **Actual.TP2.Lots = 0**
- **Actual.TP3 = 50**
- **Actual.TP3.Lots = 0**

OR

- **Lot.Size = 1.20**
- ~~**Take.Out.Lots = 0.40 (=Lot.Size)**~~ **Any value**
- **Actual.TP1 = 15**
- **Actual.TP1.Lots = 0.60**
- **Actual.TP2 = 25**
- **Actual.TP2.Lots = 0.40**
- **Actual.TP3 = 50**
- **Actual.TP3.Lots = 0.20**

So you can consider **Take.Out.Lots** as the 'portion' of your trade you want to close at each **Actual.TP** level.

If the 'portion' of your trade is the same as Lot.Size, then your trade will be fully closed when the EA reaches the pips specified in Actual.TP1

You must set TP2 and TP3 to 0.

If the 'portion' is half your lot size, then 1/2 of your trade's lot size will be closed when / if EA reaches Actual.TP1 and the remaining half when / if Actual.TP2 is reached.

You must set TP3 to 0.

If the 'portion' is one third your lot size, then 1/3rd of your trade's lot size will be closed when / if EA reaches Actual.TP1, another 1/3rd when / if Actual.TP2 is reached and remaining 1/3rd when / if EA reaches Actual.TP3.

I hope the 'relation' between Lot.Size, Take.Out.Lots and the 3 Actual.TP levels is now clear, and you should know when to set a Actual.TP parameter to 0, or when to assign a specific value. If not then this is the 1st thing you have to clarify getting in touch with me as soon as possible.

==== ADDENDUM 1 ====

From version 1.82 of Artemis Sitter PRO, 3 more TP levels have been added for a total of 6 different Take Profit levels now available to support more challenging exit strategies.

What has been described in details about the relation and the use of the 3 standard Take Profit levels is also valid for the 3 additional ones.

So if a trader wishes for example split his main trade into 5 parts and use 5 take profits, he must make sure that the division of the **Lot.Size** parameter by 5 will match **exactly** his **Take.Out.Lots** value AND must not forget to set the 6th TP to 0.

==== ADDENDUM 1 ====

Virtual.SL any value (in pips).

This is the SL that will be used to set up your manual trade stop loss (**if none is already specified**) so this is the stop loss the broker will 'see' but also the one that will be in play if your MT4 connection is lost.

The EA must be working in order to use its internal mechanism for monitoring the real SL and TP we have set so if your connection is stable you can use the masked SL (and TP) and let the EA do the rest. If you wish to disable this feature you can set it to 0, in which case the Actual.SL will be used and will update your manual entry.

Actual.SL any value (in pips).

This is the amount of pips which the expert will use as a real stop loss. It will internally monitor all your positions and if any one sustains a loss equal to the pips specified here, the EA will immediately close this position.

Virtual.TP any value (in pips).

This is the initial TP that will be used to set up your manual trade take profit (**if none is already specified**) so this is the TP the broker will 'see' but also the one that will be in play if your MT4 connection is lost. The EA must be working in order to use its internal mechanism for monitoring the real SL and TP we have set so if your connection is stable you can use the masked TP and let the EA do the rest. If you wish to disable this feature you can set it to 0.

Trail.Pips any value (in pips).

This is the amount of pips which the expert will use to trail a position. This means it will start moving your stop loss keeping it away from current price by the number of pips specified here as soon as it can but without ever going back even if price does come back.

This parameter is also combinable with all the

"Trail.Starts.After.BreakEven" parameters discussed below.

Trail.Starts.After.BreakEven True or False.

If true, the EA will start trailing a position (discussed with the "Trail.Pips" parameter previously) ONLY when and if, breakeven point is reached. Let's see an example to catch the difference between true and false here. Assume following scenario. We have a long position opened at 1.9300, current price is at 1.9320 and we have set Trail.Pips=15 and Move.To.BreakEven.at.pips = 25.

If we set Trail.Starts.After.BreakEven to True, then the expert will not move the Stop Loss before price reaches 1.9325. This will happen because we ask the ea to move to breakeven at +25 pips ($1.9300 + 0.0025 = 1.9325$) so although our trail is set to 15 pips and we do have those 15 pips gain actually, the SL won't be moved yet.

On the other hand, if Trail.Starts.After.BreakEven is set to False, then as soon as price reaches 1.9315 ($1.9300 + 0.0015$ pips Trail), our trail will kick in, and from that point it will follow price pip by pip since in that case Move.To.BreakEven.at.pips will be ignored.

Move.To.BreakEven.at.pips any pip value. This is used to lock in a profit, when a trade is in profit by the number of pips specified here. Price must exceed Entry price by this number of pips in order to lock in the profit. How many pips will be locked is specified by the **"Move.To.BreakEven.lock.pips"** parameter below.

Move.To.BreakEven.Lock.pip any pip value. You specify here the amount of pips to lock once the amount of pips specified above by the **"Move.To.BreakEven.at.pips"** parameter is reached.

Trail.With.MA True / False. If set to True **and Trail.Pips is set to 0**, then the value of the moving average specified below will be used as a trail mechanism.

MA.Period The moving average period / length you wish to use. For example if you wish to trail your position using the 50 SMA moving average, you set this parameter to 50, if you wish to use 34 EMA, set it to 34 etc... (The type of the MA is not relevant here since it will be described below)

MA.Method We specify here the type of the moving average to be used. Here are the available types:

- 0 = Simple Moving Average
- 1 = Exponential Moving Average
- 2 = Smoothed Moving Average
- 3 = Linear Weighted Moving Average

So if we want to use a 50SMA as a trail, we set:

MA.Period = 50

MA.Method=0

Whereas if we want to set the trail at EMA34 level, we set:

MA.Period = 34

MA.Method=1

NOTE: The level of the MA is based on previous closed bar, not on the MA value of current bar.

Trail.Threshold.Pips A threshold or slack we want to add to the moving average level, if any. For example, if we set this parameter to 5, then if the EA uses the MA as a trail, it will add (or subtract – depending if we are long or short) 5 pips to the moving average’s price level.

Trail.With.PSAR True / False.

If set to True **and Trail.Pips is set to 0 and Trail.With.MA is set to False**, then the value of the Parabolic SAR indicator will be used as a trail mechanism.

Psar.TimeFrame 0 for current, or any other TF
(5,15,30,60,240,1440)

PSAR.Step 0.02 (default) or any value you want

Psar.Maximum 0.2 (default) or any value you want

Use.PSAR.As.StopReverse True / False.

If set to True the EA will monitor any switch in the Parabolic Sar indicator. When PSAR switches from its current direction to the opposite, if you have one (or more) trades opened in the opposite direction of the new direction indicated by the PSAR indicator then the EA will close them all and open a new one in PSAR’s new direction with the settings set in the EA’s inputs tab. You can set up the PSAR parameters (Time Frame to monitor and PSAR’s parameters) on following inputs.

Trail.HL.Previous.Bars.Count 0 = not used

You can enter here the number of bars before current bar you wish the EA to calculate the highest high and the lowest low in order to use these as a trail stop. For example if you set this to 5, the EA will calculate the lowest point from previous bar back to 5 bars back and use this level as a trail stop for Long entries. As price bars continue to be formed, this level is recalculate at every bar change and the trail moves accordingly. Hence in an uptrend for example, the trail will adjust with the ongoing uptrend evaluating at each bar change the next lowest level from previous 5 bars and move the trail accordingly.

Trail.By.Steps True/False

Main switch to enable step trailing. Step trailing will allow you to trail your position by moving for example the stops by 10 pips for every 30 pips price moves in your direction.

For.Every.Price.Pips.Move Any number of pips

This is where we initially define every how many pips we wish price to move in our direction for the stop to be moved.

Move.Trail.By.Pips Any number of pips

This is the number of pips we wish the EA to move our stops every time price move by the number of pips specified above.

Trail.By.ATR True/False

Main switch to enable ATR trailing. ATR trailing will allow you to trail your position by moving the stops based on a percentage from the pair's daily average true range. Both ATR and the resulting stop loss are displayed on screen.

ATR.TimeFrame 1440 or any other valid TF

(0=Current, 5 = 5 Min, 15, 30, 60, 240 etc...)

ATR.Period 5 or any number of days you wish to use to calculate the ATR.

ATR.Percentage 0.20 or any (decimal) number which reflects the percentage of the ATR that will be used as a trail pips distance.

Here is a recap on how the EA will evaluate the trail:

1. If **Trail.Pips** is set to any value above 0, the EA will use Trail.Pips (and eventually the other enabled trail methods as well) as a trail mechanism. Setting it to 0 will disable this particular trailing method.
2. If **Trail.With.MA** is set to True, the EA will use a moving average as a trail mechanism (and eventually the other enabled trail methods as well). Setting it to False will disable this particular trailing method.
3. If **Trail.With.PSAR** if set to True the EA will use the Parabolic SAR indicator as a trail mechanism (and eventually the other enabled trail methods as well). Setting it to False will disable this particular trailing method.
4. If **Trail.HL.Previous.Bars.Count** is set to any value above 0, the EA will use previous bars high or low as a trail mechanism (and eventually the other enabled trail methods as well). Setting it to 0 will disable this particular trailing method.
5. If **Trail.By.Steps** is set to true, the EA will use the steps as a trail mechanism (and eventually the other enabled trail methods as well). Setting it to False will disable this particular trailing method.
6. If **Trail.By.ATR** is set to true, the EA will use a percentage based on the pair's ATR as a trail mechanism (and eventually the other enabled trail methods as well). Setting it to False will disable this particular trailing method.

If more than 1 trailing method is enabled the EA will move the stops according to the method which will give the tighter stop for current position.

If none of the 6 previous methods are used (Trail.Pips=0 and Trail.With.MA=False and Trail.With.PSAR=False, Trail.HL.Previous.Bars.Count=0, Trail.By.Steps=False and Trail.By.ATR=False) then no trailing will be used at all.

If Trail.Starts.After.Breakeven is set to True and values have been entered for the B/E parameters, then ANY trail method selected above will start only AFTER the position has been secured to B/E. **Otherwise**, the trails will kick in as soon as possible in the above mentioned order.

Handle.All.Stops.Manually True / False .

If set to True ALL trail parameters and **ALL stop handling mechanisms (Breakeven, trails) are totally disabled** since we are handling our stop loss and take profit level ourselves using the mouse to move these lines. **The only stop related features that continue to work when this option is set to True are the Scale Out mechanism and the initial SL and TP if the position has none set initially.**

SEE ADDENDUM 2 AT THE VERY END OF THE USER'S GUIDE FOR DETAILED EXPLANATIONS ON HANDLING STOPS MANUALLY

V1.60 and upwards gives you now a mechanism to automatically close ALL your open trades (no matter the pairs) based on running total profits or total losses. This is called the "basket options" and you have the choice between the 3 different basket options described below.

These parameters work in pairs since the 3 different basket options that can be used have a parameter for profit and a separate one for losses, and it is suggested to only use 1 basket of your choice if you want this feature, making sure all others baskets' parameters are set to 0.

One word of caution. ALL the parameters below are evaluated by the EA if they are set to a non zero value. This means that you *should* only use 1 basket out of the 3 available (but not restricted to), making sure the other baskets' values are set to 0. If more than one basket have non zero values, the EA will evaluate them all in the order they appear below and eventually close the positions against ANY of the baskets' settings if needed. For instance if you set the **Close.Trades.At.Plus.Pips** to **200** but also set the **Close.Trades.At.Plus.Bal.Pct** to **1.5** (%), then the EA will close all your trades when their total gain reaches 200 pips OR if the total gain reaches 1.5% of your balance, whichever comes first.

If you wish to DEACTIVATE this feature (basket closure), just set all following 6 parameters to 0.

BASKET OPTIONS 1

Close.Trades.At.Plus.Pips

0=Do not close = disable this feature.

Any other value will result in the EA closing ALL the manually opened trades, on ALL pairs once the **total number of pips gained** from all positions compounded, reaches the number specified here.

Use a **positive** number only, no decimals.

Close.Trades.At.Minus.Pips

0=Do not close = disable this feature.

Any other value will result in the EA closing ALL the manually opened trades, on ALL pairs once the **total number of pips lost** from all positions compounded, reaches the number specified here.

Use a **positive** number only, no decimals.

BASKET OPTIONS 2

Close.Trades.At.Plus.Amnt

0=Do not close / disable this feature.

Any other value will result in the EA closing ALL the manually opened trades, on ALL pairs once the **total amount of dollars gained** (or your account's base currency) from all positions compounded, reaches the amount specified here.

Use a **positive** number only, decimals allowed but not really needed.

Close.Trades.At.Minus.Amnt

0=Do not close / disable this feature.

Any other value will result in the EA closing ALL the manually opened trades, on ALL pairs once the **total amount of dollars lost** (or your account's base currency) from all positions compounded, reaches the amount specified here.

Use a **positive** number only, decimals allowed but not really needed.

BASKET OPTIONS 3

Close.Trades.At.Plus.Bal.Pct

0=Do not close / disable this feature.

Any other value will result in the EA closing ALL the manually opened trades, on ALL pairs once the **total amount of dollars gained** (or your account's base currency) from all positions compounded, reaches the **percentage** specified here against your current balance.

Use a **positive** number only, decimal number allowed

i.e. **2.5** meaning 2.5% of your balance, **3** (or 3.00) meaning 3.00% etc...

Close.Trades.At.Minus.Bal.Pct

0=Do not close / disable this feature.

Any other value will result in the EA closing ALL the manually opened trades, on ALL pairs once the **total amount of dollars lost** (or your account's base currency) from all positions compounded, reaches the **percentage** specified here against your current balance.

Use a **positive** number only, decimal number allowed

i.e. **2.5** meaning 2.5% of your balance, **3** (or 3.00) meaning 3.00% etc...

Disable.1Click.Orders True/False

If set to True, the EA will not check for keyboard key combinations.

This **SHOULD** be set to true if you wish enter your trades manually without the use of the shortcut keys in order to not trigger any trades by mistake while you use your keyboard for tasks other than trading. Set it to False only if you do not use your keyboard for other tasks and you wish to use the shortcut keys to place any kind of order through this procedure.

Show.1Click.Shortcuts True/False

If set to True, you will have a summary of the key combinations in the upper right corner of your chart. Setting it to False disables the display (but not the use of the shortcut keys which is disabled only by previous parameter)

1 click - manual orders entry shortcuts

All the key combinations used for placing new trades are used by pressing the left **ALT** key, holding in pressed and pressing the letter or number (**Use the numbers on the Numeric Key Pad to the right of the keyboard only**) corresponding to the kind of order you wish to place.

Attention. For these key combinations to work and trigger the corresponding orders, ticks/data feed must be fluently coming in. If price is not moving or moving extremely slow, you will need to retry again until you see the orders placed on the screen. But be careful to not overdo it since you may trigger that way more than 1 order.

You are also advised to not use your keyboard for other tasks in parallel since at times, what you may type in can trigger a key combination and consequently the related order.

ALT +1 = Open a STRADDLE (1 long + 1 short pending order)

ALT +2 = Open a BUY (Market)

ALT +3 = Open a SELL (Market)

ALT +4 = Open a BUY STOP

ALT +5 = Open a SELL STOP

ALT +6 = Open a BUY LIMIT

ALT +7 = Open a SELL LIMIT

ALT +9 = KILL ALL TRADES

ALT +R = STOP & REVERSE

ALT +0 = Open a position on horizontal / Trend line

(This is a new feature appearing in v1.90)

You can draw a horizontal line or trend line at any level you wish on your chart. This can be a major support / resistance line or a custom ascending or descending trend line.

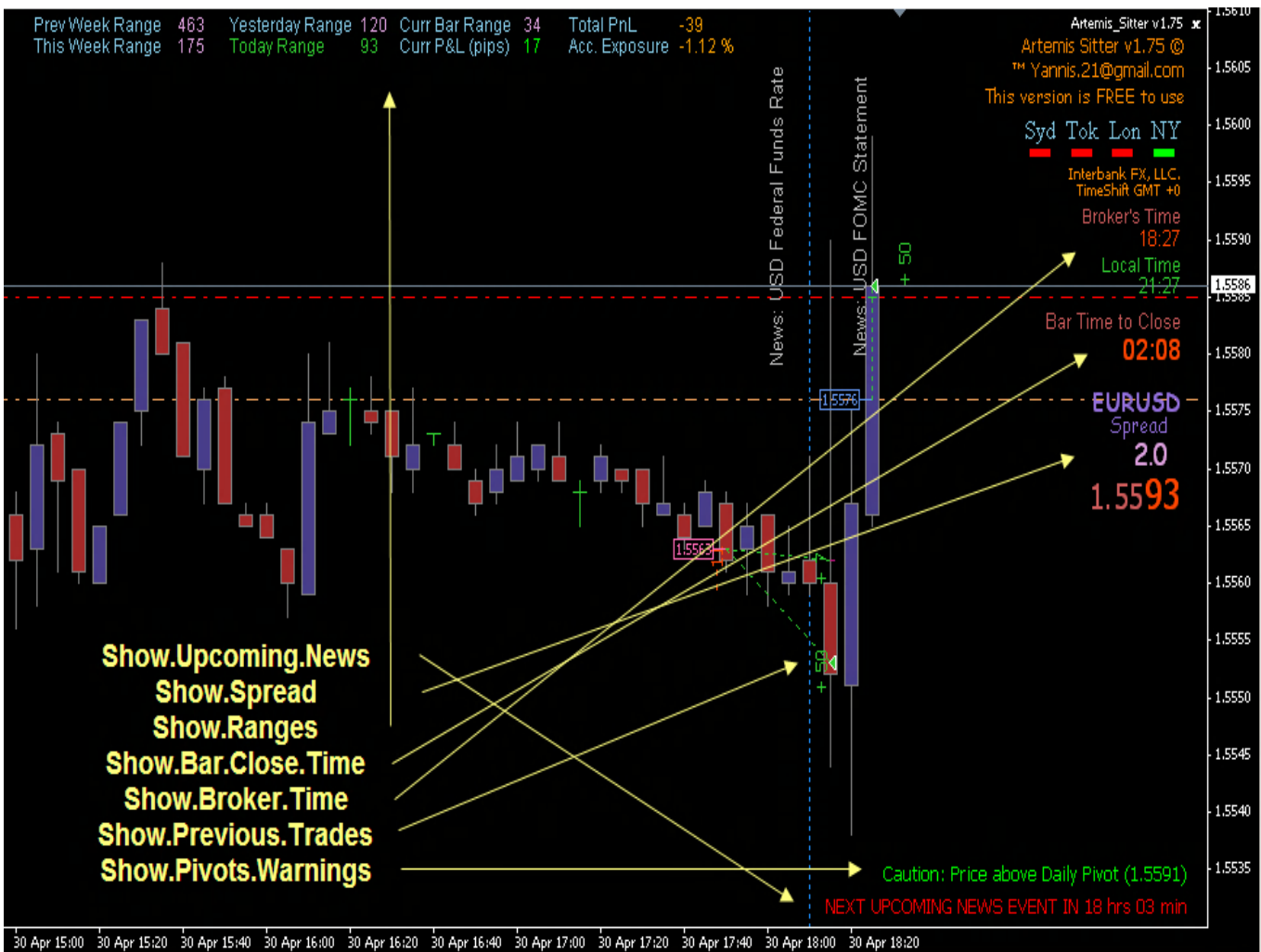
Once you have your line defined on the chart, all you have to do is to name the line with a number corresponding to the type of order you want the EA to place at that level when you will press the ALT+0 (zero) key combination.

In the example below, the trend line has been named **4**, so the EA knows we need to open a BUY_STOP order which corresponds to the Alt+**4** 1 click key combination.

So if after you have drawn your trend line, you press Alt + 0 at any time you see fit, the EA will find the trend line, read its name (4) and it will know it must open a BUY_STOP order at the value of the trend line on previous candle.



The remaining settings are pretty much explicit and are described in the image below



Version History

(See page 24 for Licensing – all versions are free on a demo account)

v1.91

- Code Optimization.

v1.90

- Traders can now use a custom horizontal line or a trend line to place an order on the chart at any time using the ALT+0 shortcut key.

Just draw your line at any time, name it using a number from the 1 click shortcut based on the kind of order you wish to place (i.e for a Straddle name it 1, 4 for a Buy Stop, 5 for a Sell Stop, 6 for a Buy Limit, 7 for a Sell Limit) .

- Step Trailing now supports position scaling. When a position with multiple lots is scaled out, the step trail continues to cover the remaining lots.

- New Trail possibility based on ATR

v1.84 through v1.89

- Code Optimization.

v1.83

- Enables a combination of multiple trail mechanisms, using the ‘tighter’ one that will be available from the methods used.

v1.82

- Adds 3 more Take Profit levels to give more flexibility to various exit strategies

v1.80

- Fixes a bug with ECN brokers (MT4 brokers using 3 and 5 decimals / digits in their quotes instead of the ‘usual’ 2 and 4 digits

v1.79

- Fixes a bug with when scaling out using the Actual.TPx.Lots parameters

v1.78

- Fixes a bug with the Trail.Pips parameter resulting in closing trades at +1
- Stop Loss and Take Profit Levels handled directly on the chart with your mouse. Select the TP and / or the SL lines placed by the EA on the screen and simply move them to the desired levels. Your position’s stops will be modified to these new levels automatically.
- 1 click Manual Order Entry Management.
You can enter any kind of order as well as a straddle with just 1 keyboard key.
All shortcut keys displayed on screen as visual help
- 1 click Panic Close All Positions allowing you to immediately all open positions.
- Daily and Weekly pivots displayed on screen as well as daily open, high and low in a very elegant way without cluttering the chart.

- Option to trail by high/low from xx bars ago
- Option to scale out a position by non fixed lot sizes.
- Option to trail by high/low from xx bars ago
- Option to trail by steps (for every x pips price moving, adjust SL by y pips)

v1.75

Fixes a serious bug with the Virtual.SL/Actual.SL.
Actual.SL was not working as expected.

v1.70

On screen display adjustments.

v1.60

- Minor bug fixes on display + Pip count now matching pips x lot size in display.

v1.50

- Adds options to close **all open positions** – basket of trades (all pairs) – either in profit or in loss, with 2 different parameters 1 for profit and 1 for loss, based on :
 - a) a specified **number of pips**
(i.e. 150 pips profit and 100 pips loss for all open orders and pairs)
 - b) a specified **amount** in account's currency
(i.e. \$1500 profit and \$1000 loss for all open orders and pairs)
 - c) a specified **percentage** from account's balance
(i.e. 2.50% profit and 2.00% loss for all open orders and pairs)
- Code adjusted to support 3 and 5 digits Brokers
- Adds Pivots (daily and weekly) proximity sensor and warning.

v1.40

- Add PSAR trailing.

v1.30

- Fixes a bug which prevented the EA to run correctly if the EA's settings were not correctly set and which unfortunately did not display any message. This is why the EA did not work if for example the TPs were not set correctly according to the Lot.Size / Take.Out ratio.
- Fixes a (small) bug when trailing a position with the use of a moving average. The spread was added to the wrong side.
- Adds a **manual Stop & Reverse** feature which allows the closure of a currently opened position and initiation of a new position in the opposite direction. This is done by pressing left Shift+R
- Adds an automated Stop & Reverse feature based on the Parabolic Sar indicator which is fully configurable in the EA's parameters

Licensing

All versions, Standard and Professional are **free to use on a demo account**, without any restrictions and users can evaluate the EA as long as they want until they are confident they have a great trading tool in their hands. They will also have full support through my email Yannis.21@gmail.com for any question or problem they can encounter, or help for specific settings that match their manual strategies.

However, note that new upgrades and new features will only be available on the PRO version which will continue to evolve.

Annual Fees per version (for 1 live account):

Artemis Sitter STD : \$100

Artemis Sitter PRO : \$200

Additional licenses for additional live accounts can be acquired with 50% discount for each additional license required after the first one.

STD registered version includes full support and updates which include a bug fix. The PRO version additionally includes any new version (beside a bug fix) that will come out within the subscription period. Furthermore, Traders under the PRO license can formulate requests for additional features that can be based on their personal trading style or system. These requests will be evaluated and could be coded in a next version either free of charge or against a nominal fee depending on what is asked and if it is something that could be valuable for all the users.

All annual subscriptions are payable to my PayPal account jsfero@otenet.gr. **Please mention the EA's name, desired version and live account number in your payment.** The subscriptions are non refundable and delivery is usually within 2 hours from payment from 06.00 GMT to 16.00 GMT, but in rare circumstances it could take longer, up to 48 hours.

Caution: In case a user closes an account and opens a new one or transfers funds from one account to another, the initial license will not be changed unless he can provide an email from the broker stating that the account for which the EA was initially licensed was indeed closed. In that case he will get a new license for the new account free of charge, otherwise the account change will be perceived as a request for an additional new license at 50% the initial fee.

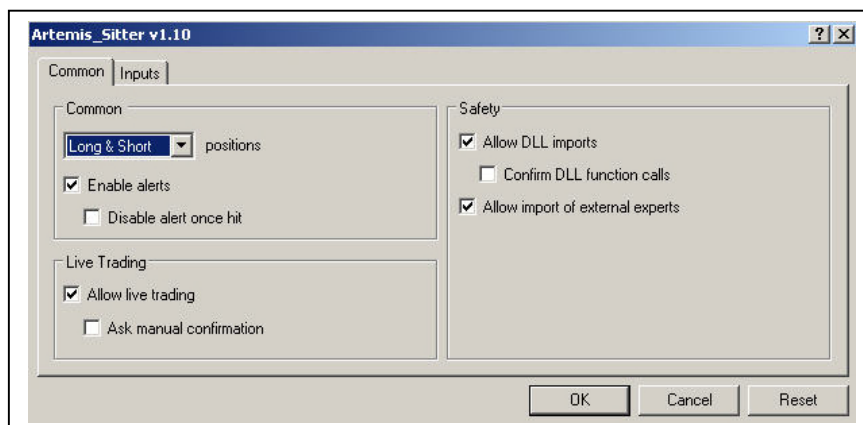
Error Codes and what they mean

9101 / 9103 - Your MT4 and/or EA check boxes are not correctly set

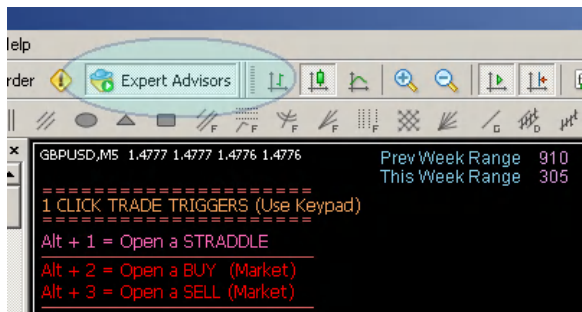
1. Press CTRL+O to open the MT4 Tools/Option window
2. Click on the 'Expert Advisors' tab page
3. Set your check boxes as picture below



4. Press F7 to open your Expert options window
5. Click on the "Common" tab
6. Set your check boxes as picture below



9102 - The expert is Disabled. Check the button as shown below.



9105 - The expert has expired.

9110 - The expert is not licensed for a live account. See licensing page 24.

9115 - The expert is not licensed for a live account. See licensing page 24.

6200 - The total TP.Lots do not match your Lot.Size
(Actual.TP1.Lots+Actual.TP2.Lots+Actual.TP3.Lots+Actual.TP4.Lots+
Actual.TP5.Lots+Actual.TP6.Lots MUST match **Lot.Size**)

6201 - Scale.Out.Lots CANNOT BE 0.00 OR LESS

6202 - The expert is disabled because the Lot.Size and Take.Out.Lots
parameters are not consistent with each other.
This means that Lot.Size divided by Take.Out.Lots leaves a remainder or gives a decimal
value. Refer to page 9 of this user's guide for detailed explanations.

6203 - Actual.TP1 CANNOT BE 0

7301 – 1 TP level is set to 0 when it should have a non 0 value.
For example, if your Lot.Size is set to 0.2 and Take.Out.Lots is set to 0.1 this
Translates to 2 positions and that the EA expect to find a value in both TP1 and TP2.
Getting this error probably denotes that TP2 is set to 0.

7302 – 2 or 3 TP levels are set to 0 when they should have a non 0 value.
Same as above. TP2 and / or TP3 are set to 0 when they should have a value.

7303 - 1 TP level has a value but it should actually be set to 0.
For example, if your Lot.Size is set to 0.2 and Take.Out.Lots is set to 0.1 this
Translates to 2 positions and that the EA expect to find a value in both TP1 and TP2
BUT NOT in TP3. Getting this error probably denotes that TP3 is set to a non 0 value
when it should be 0.

7304 - Actual.TP1 CANNOT BE 0
Same as above. TP3 and / or TP2 have a value when they should be set to 0.

Artemis Sitter Expert Advisor

Comparative sheet between versions

(All On Screen display options are optional and can be hidden if desired)

STD	PRO	Feature	Details
√	√	Multiple lot size positions supported	The EA can baby sit a trade with any lot number standard, mini or micro. Full support for quotes with 3 and 5 decimals and ECN/MT4 brokers
3	6	Scale out positions	It can break an initial position up to 6 parts (3 for the STD version) allowing 6 different take profit levels (3 for the STD version)
√	√	Masked SL and TP	Initial SL and TP can be masked, the EA will monitor internally the real SL and TP values, the broker will see only 'virtual' ones
√	√	Secure Positions to Breakeven	Can move SL to entry price + xx pips in order to secure your position
√	√	Standard Trail Mechanism	Can trail a position via normal trail mechanism (xx pips below price) either from start or after position has been secured / moved to breakeven
X	√	Advanced Trail Mechanism	<ul style="list-style-type: none"> a) Through fully configurable Moving Averages Stop will follow the MA level b) Through fully configurable Parabolic Sar Stop will follow the PSAR level c) Through previous xx bars High / Low Stop will follow the Low previous xx bars for a long, the High of previous xx bars for a Short d) Through Step Trailing Stop will be moved by xx pips for every yy price move e) Through ATR Trailing Stop will be moved by a percentage of its daily range (displayed on screen according to the settings used)

X	✓	Stop and Reverse Feature	Close a position and open the opposite one, either through a keyboard key combination or Psar switch
X	✓	SL and TP directly adjusted on screen using your mouse	You can move and adjust SL and TP levels by clicking on them and moving them to the desired levels just using your mouse
X	✓	Trade Basket options	3 Basket options available to shut down ALL trades when profit or loss reaches a predefined level allowing to close all trades at + or – a) xx total number of pips gain or loss b) xx total dollar amount gain or loss c) xx percentage based on account's balance
X	✓	Immediate order entry	You can use predefined keyboard shortcut keys to trigger any kind of order. Shortcuts are visible on screen.
X	✓	Order Entry based on custom horizontal lines or on custom Trend lines.	Using just a 1 click keyboard combination, you can use your own custom horizontal or trend lines to place an order at any time you see fit. Orders can also include a straddle or any type of stop or limit order.
X	✓	On screen upcoming news info	You can have a visual reminder of upcoming news events along with the expected impact / volatility
X	✓	MSN like alerts and email notifications	Displays all EA major actions in a nifty alert box and sends an email informing you of these actions if you are not on your computer.
✓	✓	On screen Pivot display	You can have neat and clear daily pivot display on the chart
X	✓	On screen Pivot proximity warnings	You can have warnings on screen when price comes close to a pivot (daily and weekly)
X	✓	On screen trade history display	You can have all your trades clearly shown on screen with entry and exit levels and the profit or loss realized on each trade
✓	✓	On screen enhanced informations	A multitude of valuable on screen display from market times, currency ranges, account and currency P&L etc...

X

✓

Full Support and life time new updates

Only the PRO version will continue to evolve and all traders registered under this version will receive full support and all new upcoming versions free of charge as long as they remain subscribers. Furthermore, requests from the traders who would need adjustments or new features are evaluated and could be coded in next version, either free of charge or with a nominal fee depending on what is needed and if this addition can be valuable to all the users.

==== ADDENDUM 2 ====

Handling your Stop Loss and Take Profit using your mouse

This is a very nifty feature which allows you to move the SL and the TP levels of each trade directly on the chart using simply your mouse.

By moving for example the SL line on the chart, the EA automatically modifies your stop loss directly in the order (you will see it change in the Terminal window) so it matches exactly the current level of the SL line where you leave it on the chart.

This feature gives you the total liberty to evaluate yourself where exactly you wish the stop to be placed and most important, it changes the order automatically without any other time consuming moves from your side.

Here is how it works.

As soon as the parameter named **Handle.All.Stops.Manually** is set to True, 2 new lines will be automatically drawn on the chart. 1 line for current SL and 1 line for current TP.

After double clicking on the lines to 'select' them (you will see a small dot at both ends of the line), you will then be able to move them at will, up and down on your chart.

You will see that the EA automatically modifies the related order according to the line you move (SL or TP) and the level you just leave the line put will be the new order's value for the SL or TP accordingly. Simple isn't it?

Pictures below are self explanatory.





Order	Time	Type	Size	Symbol	Price	S / L	T / P	Price	Commission	Swap
4335266	2009.01.08 14:14	sell	0.30	eurCHF	1.4941	1.5041	1.4860	1.4969	0.00	0.00

Balance: 6 989.71 Equity: 6 913.16 Margin: 408.63 Free margin: 6 504.53 Margin level: 1691.79%

==== ADDENDUM 2 ====