

**TREND WITHOUT HICCUPS - A KALMAN FILTER APPROACH**

**By**

**ERIC BENHAMOU, PhD, CFTe, CAIA, CMT**

**DATE: April 2016**

## **ABSTRACT**

### **TREND WITHOUT HICCUPS - A KALMAN FILTER APPROACH**

**By**

**ERIC BENHAMOU, PhD, CFTe, CAIA, CMT**

**DATE: April 2016**

Have you ever felt miserable because of a sudden whipsaw in the price that triggered an unfortunate trade? In an attempt to remove this noise, technical analysts have used various types of moving averages (simple, exponential, adaptive one or using Nyquist criterion). These tools may have performed decently but we show in this paper that this can be improved dramatically thanks to the optimal filtering theory of Kalman filters (KF). We explain the basic concepts of KF and its optimum criterion. We provide a pseudo code for this new technical indicator that demystifies its complexity. We show that this new smoothing device can be used to better forecast price moves as lag is reduced. We provide 4 Kalman filter models and their performance on the SP500 mini-future contract. Results are quite illustrative of the efficiency of KF models with better net performance achieved by the KF model combining smoothing and extremum position.

Copyright© by

ERIC BENHAMOU

[eric.benhamou@thomsonreuters.com](mailto:eric.benhamou@thomsonreuters.com)

Head of Pricing Innovation, Content Analytics and Valuation Service

Thomson Reuters, France

## ACKNOWLEDGEMENTS

The author would like to acknowledge support from Thomson Reuters. Data are from Thomson Reuters Eikon while screenshots and source codes are done with TR Eikon Trading Robot. The author also thanks Denis Dollfus for fruitful conversations. Source codes for Trading Robot is available upon request to the author.

**Disclaimer:** The views and opinions expressed in this article are those of the author and do not necessarily reflect the official position or policy of Thomson Reuters. Materials is provided “AS IS” with no representations or warranties. Although the author has taken great care to provide accurate information, neither the author, nor Thomson Reuters, nor anyone else associated with this publication, shall be liable for any loss, damage, or liability directly caused or alleged to be caused by this paper. Materials contained herein are not intended to provide any specific advice or investment recommendations.

# TABLE OF CONTENTS

<i>ACKNOWLEDGEMENTS</i> .....	<i>iv</i>
<i>TABLE OF CONTENTS</i> .....	<i>v</i>
<i>LIST OF FIGURES</i> .....	<i>vii</i>
<b>1 INTRODUCTION</b> .....	<b>1</b>
1.1 Motivation for smoothing.....	2
1.2 Impact for trading strategies .....	3
<b>2 REVIEW OF MOVING AVERAGES</b> .....	<b>4</b>
2.1 The usual moving averages.....	4
2.2 Explicit Lag Computation .....	4
<b>3 INTRODUCTION TO KALMAN FILTER</b> .....	<b>5</b>
3.1 Basic concepts.....	5
3.2 Pseudo code.....	9
<b>4 TRADING STRATEGIES WITH KALMAN FILTER</b> .....	<b>11</b>
4.1 Basic concepts.....	11
4.2 Pseudo code.....	11
<b>5 NUMERICAL RESULTS</b> .....	<b>12</b>
5.1 Description of the sample set.....	12

5.2	Comparison of Kalman filters with standard technical indicators.....	12
5.3	Kalman filter trading strategies performance .....	15
6	<i>DISCUSSION</i> .....	23
	<i>CONCLUSION</i> .....	24
	<i>REFERENCES</i> .....	25
	<i>APPENDIX</i> .....	26

## LIST OF FIGURES

	Page
<i>Figure 1: Comparison of Kalman filter with classical moving averages. ....</i>	13
<i>Figure 2: Comparison of Kalman filter with double and triple exponential moving averages.....</i>	13
<i>Figure 3: Zoom on differences between Kalman filter and zero lag moving averages. ....</i>	14
<i>Figure 4: Comparison between the different Kalman filters. ....</i>	14
<i>Figure 5: Cumulative profit and monthly PnL distribution for KF model 4.....</i>	17
<i>Figure 6: Cumulative profit and monthly PnL distribution for KF model 3.....</i>	18
<i>Figure 7: Cumulative profit and monthly PnL distribution for KF model 2.....</i>	19
<i>Figure 8: Cumulative profit and monthly PnL distribution for KF model 1.....</i>	20
<i>Figure 9: Efficiency of Kalman filter model 4 to detect trends.....</i>	22

## LIST OF TABLES

	Page
<i>Table 1: Trading performance of Kalman filter model 1, 2, 3 and 4</i> .....	16
<i>Table 2: Model parameters for Kalman filter model 1, 2, 3 and 4</i> .....	16
<i>Table 3: Trading strategy statistics for Kalman filter model 4</i> .....	17
<i>Table 4: Trading strategy statistics for Kalman filter model 3</i> .....	18
<i>Table 5: Trading strategy statistics for Kalman filter model 2</i> .....	19
<i>Table 6: Trading strategy statistics for Kalman filter model 1</i> .....	20
<i>Table 7: Trades list for Kalman model 4</i> .....	21



# INTRODUCTION

## 1 INTRODUCTION

Have you ever felt angry because a sudden price whipsaw triggered an unfortunate signal and a resulting bad trade? Prices have inherent blips and jerks that are not easy to control. Moreover, prices are inputs for technical analysis indicators. This can result in corrupted or non-efficient indicators. In an ideal world, one would like prices heading to a clear direction. Remember the old adage: “trade with the trend”. But in real life, prices hiccups create noise and perturb the signal.

A first attempt to remove these yanks and jolts is to smoothen prices with moving averages. However, moving averages suffer from two flaws: lags and no dynamics. The first drawback, delay in moving average response, is widely known as moving averages used past data. Adaptations to moving averages have been suggested (exponential, adaptive, zero lag or Nyquist criterion based moving averages). Durchner in [Dürschner-2012] suggested the use of Nyquist criterion to create moving average 3.0 with no lag.

This is intellectually very enticing as the lag is completely removed. This improves moving averages from Patrick Mulloy [Mulloy-1994] with zero lag or the attempts by John Ehlers to provide sophisticated moving averages ([Ehlers-2001a] or [Ehlers-2001b]). But this does not address the second problem of capturing price dynamics. What we mean by price dynamics is the price movement. If we can identify that prices are moving upwards (respectively downwards), then a good guess for next price observation should be higher (respectively lower) than the current price. Let us pause for a moment and imagine instead of prices, we were looking at car position using a GPS. We measure the car position with a

GPS but with some noise as the signal is not perfectly accurate. Could we capture the car dynamics to compute the best guess at next time step and hence reduce noise in car position? The answer is yes! And guess what, this is what your car GPS is doing. This theory simply explained is referred to as Kalman filter (from its inventor **[Kalman-1960]**) shortened to KF in this paper. It was created for the spatial industry to remove noise and capture shuttle movements. In a scientific way, the Kalman filter is an efficient recursive filter that estimates the state of a dynamic system from a series of incomplete and noisy measurements to estimate the best forecast according to an assumed distribution. In the original paper, Kalman assumes a Gaussian distribution of noise but extended version can now cope with more advanced distribution (see **[Kalman-Filter-Wikipedia]**). In this article, we first revisit moving averages and then present different Kalman filter models and their implementation to create trading strategies. We then provide performance results for our 4 KF models on one year of data of the E-mini-SP continuation future.

### **1.1 Motivation for smoothing**

Smoothing prices is natural. The basic idea is to remove noise from prices to better identify important patterns or trends. Remember, when we trade, we want the big picture. So smoothing enables us removing bumps, bangs, bounces, and shocks and getting an average clean signal. If we believe that prices do not follow a random walk model, the smoothed signal provides us a clear directional signal.

## **1.2 Impact for trading strategies**

Conversely, if we do not smoothen prices, we could act on tugs, wrenches, or snatches that are against the trend and result in bad trades. Smoothing is the right way! But we need to be careful. If we smoothen with lag (one of the major drawbacks of moving averages), we act with delay and enter trades too late, potentially facing reverse direction markets. In an ideal world, we would like the smoothing technique to have zero lag and to provide a first move advantage.

## MATERIAL AND METHODS

### 2 REVIEW OF MOVING AVERAGES

#### 2.1 The usual moving averages

The usual way to remove noise in prices is with moving averages. Let us denote weights by  $w_i$  for the time  $T_i$ , where  $i$  goes between 0 to  $N$ . Then, the moving average is given by

$$MA(w_0, \dots, w_N) = \sum_{i=0}^N w_i P_i \quad (\text{EQ 2.1})$$

Whose lag is

$$LAG MA(w_0, \dots, w_N) = \frac{\sum_{i=0}^N w_i T_i}{\sum_{i=0}^N w_i} \quad (\text{EQ 2.2})$$

If we do a moving average of a moving average, equation (2.1) becomes

$$MA \odot MA(w_0, \dots, w_N) = \sum_{i=0}^N w_i \left( \sum_{j=0}^N w_j P_{i+j} \right) \quad (\text{EQ 2.3})$$

And the corresponding lag is

$$LAG MA \odot MA(w_0, \dots, w_N) = \frac{\sum_{i=0, j=0}^N w_i w_j T_{i+j}}{\sum_{i=0, j=0}^N w_i w_j} \quad (\text{EQ 2.4})$$

We can easily derive similar formula for a recursive moving average at the order  $k$ th:

$$MA \odot^k(w_0, \dots, w_N) = \sum_{i_1=0, \dots, i_k=0}^N w_{i_1} \dots w_{i_k} P_{i_1 + \dots + i_k} \quad (\text{EQ 2.5})$$

The resulting lag is

$$LAG MA \odot^k(w_0, \dots, w_N) = \frac{\sum_{i_1=0, \dots, i_k=0}^N w_{i_1} \dots w_{i_k} T_{i_1 + \dots + i_k}}{\sum_{i_1=0, \dots, i_k=0}^N w_{i_1} \dots w_{i_k}} \quad (\text{EQ 2.6})$$

#### 2.2 Explicit Lag Computation

Prices are sampled with equidistant time steps  $T_i = \frac{i}{N}T$ . Formulae (EQ.2.6) can be easily computed in terms of its first order value as follows:

$$LAG MA \odot^k(w_0, \dots, w_N) = k LAG MA(w_0, \dots, w_N) \quad (\text{EQ 2.7})$$

(See **Proof A.1:**)

Furthermore, if we combine recursive moving averages, it is easy to find back the results of Mulloy. In the case of a moving average of moving average, the only possible choice with zero lag whose coefficient sum is equal to 1 is the double moving average:

$$DEMA = 2MA - MA \odot^2 \quad (\text{EQ 2.8})$$

(See **Proof A.2**)

And for the triple moving average (if we impose the additional constraint that the 3<sup>rd</sup> order recursive moving average coefficient is 1), we have

$$TEMA = 3MA - 3 \cdot MA \odot^2 + MA \odot^3 \quad (\text{EQ 2.9})$$

(See **Proof A.3**)

### 3 INTRODUCTION TO KALMAN FILTER

#### 3.1 Basic concepts

Kalman filter is a recursive algorithm that has been invented in the 1960s to track a moving target, remove any noisy measurements of its position and predict its future position. In finance, KF has been used by the asset management industry for various purposes. KF is an optimal choice in many cases and do at least better than a moving average smoothing. Dao et al [**Bruder-Dao-Richard-Roncalli-2011**] and [**Dao-2011**] showed that for price following random walk with noise, KF is equivalent to the optimal exponential moving average with parameter equal to Kalman gain. However, for more sophisticated dynamics,

like a linear Gaussian model, KF is the optimal choice and the most efficient computational solution for finding the model parameters.

KF has also been used over the last decade by different authors. Martinelli and Rhoads in [Martinelli-2006] and [Martinelli-Rhoads-2010] used Kalman filter to find optimal guess for trading strategies on stocks. Haleh-et-al in [Haleh-et-al-2011] used Extended Kalman filter for forecasting stock prices, combining technical and fundamental data. They showed it outperformed regression and neural networks. Ernie Chan in [Chan-2013] suggested using KF for pair correlation trading, while Cazalet and Zheng in [Cazalet-Zheng-2014] used KF for hedge fund replication.

In a general way, Kalman filter consider a linear dynamic system given by

$$X_{t+1} = \phi X_t + c_t + w_t \quad (\text{EQ 3.1})$$

$$Y_t = HX_t + d_t + v_t \quad (\text{EQ 3.2})$$

Where  $\phi$  is the state transition matrix,  $H$  the measurement matrix,  $w_t$  the model noise,  $X_t$  the state vector,  $Y_t$  the measurement vector,  $v_t$  the measurement noise,  $w_t$  and  $v_t$  the independent white noises with zero mean and their variance matrices given by  $Q$  and  $R$  respectively.  $c_t$ , respectively  $d_t$ , is the drift of the state vector, respectively the measurement vector. The corresponding Kalman filter is:

Prediction step:  $X_{t+1|t} = \phi X_{t|t} + c_t \quad (\text{EQ.3.3})$

With  $P_{t+1|t} = \phi P_{t|t} \phi^T + Q \quad (\text{EQ.3.4})$

Correction step:  $X_{t+1} = X_{t+1|t} + K_{t+1}(Y_{t+1} - Y_{t+1|t}) \quad (\text{EQ.3.5})$

With  $Y_{t+1|t} = HX_{t+1|t} + d_t$

With Kalman gain  $K_{t+1} = P_{t+1|t} H^T [H P_{t+1|t} H^T + R]^{-1} \quad (\text{EQ.3.6})$

With  $P_{t+1|t+1} = [I - K_{t+1} H] P_{t+1|t} \quad (\text{EQ.3.7})$

KF works in a two-step process (prediction and correction steps). The algorithm is recursive, can run in real time, using only the present input measurements, the previously calculated state and its uncertainty matrix.

Obviously, one needs to specify the state and measurement vector. A logic choice is to use a physical system with concepts similar to speed and acceleration:

$$x_{t+1} = x_t + \dot{x}_t \delta t + 1/2 a_t \delta t^2 \quad (\text{EQ.3.8})$$

$$\dot{x}_{t+1} = \dot{x}_t + a_t \delta t \quad (\text{EQ.3.9})$$

$$y_t = x_t + v_t \quad (\text{EQ.3.10})$$

Where  $x_t$  and  $\dot{x}_t$  are price and rate of change of stock price at time  $t$  (similar to position and speed).  $a_t$  can be seen as the acceleration of price at time  $t$ . It is considered to be a model noise.  $T$  is the sampling period,  $y_t$  the measurement,  $v_t$  the measurement noise. This can be analyzed as a KF system with

$$X_t = \begin{bmatrix} x_t \\ \dot{x}_t \end{bmatrix}, \phi = \begin{bmatrix} 1 & \delta t \\ 0 & 1 \end{bmatrix}, w_t = \begin{bmatrix} \frac{1}{2} \delta t^2 \\ \delta t \end{bmatrix} a_t, H = [1 \quad 0], c_t = 0 \quad (\text{EQ.3.11})$$

This is named **model One**. This model has the advantage to take into account a certain dynamic compared to the simple Random Walk model that is often used in the KF literature where there is no speed term. In our model One, The speed is initially estimated as the difference between two consecutive prices. The parameters to estimate are the following (4 in total)

$$Q = \begin{bmatrix} p_1 p_1 & p_2 p_1 \\ p_1 p_2 & p_2 p_2 \end{bmatrix}, R = [p_3], P_{t=0} = \begin{bmatrix} p_4 & 0 \\ 0 & p_4 \end{bmatrix} \quad (\text{EQ.3.12})$$

It is interesting to note that this model is very closed to a local linear trend model. Indeed, the local linear trend model writes as

$$x_{t+1} = x_t + \beta_t + w_{1,t} \quad (\text{EQ.3.13})$$

$$\beta_{t+1} = \beta_t + w_{2,t} \quad (\text{EQ.3.14})$$

$$y_t = x_t + v_t \quad (\text{EQ.3.15})$$

We can notice that in this specific case, the KF parameters are the following:

$$X_t = \begin{bmatrix} x_t \\ \beta_t \end{bmatrix}, \phi = \begin{bmatrix} 1 & 1 \\ 0 & 1 \end{bmatrix}, w_t = \begin{bmatrix} w_{1,t} \\ w_{2,t} \end{bmatrix}, H = [1 \quad 0], c_t = 0 \quad (\text{EQ.3.16})$$

The parameters to estimate are the following (5 in total)

$$Q = \begin{bmatrix} p_1 p_1 & p_2 p_1 \\ p_1 p_2 & p_2 p_2 \end{bmatrix}, R = [p_3], P_{t=0} = \begin{bmatrix} p_4 & 0 \\ 0 & p_5 \end{bmatrix} \quad (\text{EQ.3.17})$$

This model has almost the same parameters as model one. This is named **model Two**.

Comparing equation 3.12 and 3.17, we know that model One and Two should have very similar behavior.

We can create a more general two factors model with contribution to price split between a short term  $x_t^1$  and a long term  $x_t^2$ . This leads to:

$$x_{t+1}^1 = a_{11}x_t^1 + a_{12}x_t^2 + w_{1,t} \quad (\text{EQ.3.18})$$

$$x_{t+1}^2 = a_{22}x_t^2 + w_{2,t} \quad (\text{EQ.3.19})$$

$$y_t = h_1x_t^1 + h_2x_t^2 + v_t \quad (\text{EQ.3.20})$$

In this specific model, we have the following parameters

$$X_t = \begin{bmatrix} x_t^1 \\ x_t^2 \end{bmatrix}, \phi = \begin{bmatrix} a_{11} & a_{12} \\ 0 & a_{22} \end{bmatrix}, w_t = \begin{bmatrix} w_{1,t} \\ w_{2,t} \end{bmatrix}, H = \begin{bmatrix} h_1 \\ h_2 \end{bmatrix}, c_t = 0 \quad (\text{EQ.3.21})$$

We call this **model Three**. Because of its generality, this model encompasses models 1, 2.

The parameters to estimate are the following (10 in total)

$$\phi = \begin{bmatrix} p_1 & p_2 \\ 0 & p_3 \end{bmatrix}, H = [p_4], Q = \begin{bmatrix} p_6 p_6 & p_7 p_6 \\ p_6 p_7 & p_7 p_7 \end{bmatrix}, R = [p_8], P_{t=0} = \begin{bmatrix} p_9 & 0 \\ 0 & p_{10} \end{bmatrix} \quad (\text{EQ.3.22})$$

The last model we use is a model inspired by a combination of oscillators and the previous model. In this model, we use the price position with respect to its extremums as in the fast stochastic oscillator. We denote the variable  $K_t$  over a d period given by

$$K_t^d = \frac{\text{Current Close} - \text{Lowest Low}(d)}{\text{Highest High}(d) - \text{Lowest Low}(d)} \times 100 \quad (\text{EQ.3.23})$$



We denote by  $L_t^d = \text{Lowest Low}(d)$  and  $H_t^d = \text{Highest High}(d)$  the lowest low and highest high over  $d$  period. We use in our example a 14 days period. As in model 3, we also split the contribution of the price due to short term  $x_t^1$  and long term  $x_t^2$ . This leads to:

$$x_{t+1}^1 = a_{11}x_t^1 + a_{12}x_t^2 + (M_1 - N_1K_t^d) + w_{1,t} \quad (\text{EQ.3.24})$$

$$x_{t+1}^2 = a_{22}x_t^2 + (M_2 - N_2K_t^d) + w_{2,t} \quad (\text{EQ.3.25})$$

With 
$$K_t^d = \frac{h_0x_t - L_t^d}{H_t^d - L_t^d} \quad (\text{EQ.3.26})$$

$$y_t = h_1x_t^1 + h_2x_t^2 + v_t \quad (\text{EQ.3.27})$$

In this specific model, we have the following parameters

$$X_t = \begin{bmatrix} x_t^1 \\ x_t^2 \end{bmatrix}, \Phi = \begin{bmatrix} a_{11} & a_{12} \\ 0 & a_{22} \end{bmatrix}, w_t = \begin{bmatrix} w_{1,t} \\ w_{2,t} \end{bmatrix}, H = \begin{bmatrix} h_1 \\ h_2 \end{bmatrix}, c_t = \begin{pmatrix} M_1 - N_1K_t^d \\ M_2 - N_2K_t^d \end{pmatrix} \quad (\text{EQ.3.28})$$

We call this **model Four**. Because of its generality, this model encompasses models 1, 2 and 3. It capture short and long term effect as well as position with regards to extrema like what oscillators do. This is by far the most realistic model. Short term factor  $x_t^1$  models extreme market reactions that last for a few days. Long term factor  $x_t^2$  is only influenced by itself and not by the short term  $x_t^1$ . The parameters to estimate are the following (15 in total) (the same set as model 3 and 5 additional parameters)

$$\Phi = \begin{bmatrix} p_1 & p_2 \\ 0 & p_3 \end{bmatrix}, H = \begin{bmatrix} p_4 \\ p_5 \end{bmatrix}, Q = \begin{bmatrix} p_6p_6 & p_7p_6 \\ p_6p_7 & p_7p_7 \end{bmatrix}, R = [p_8], P_{t=0} = \begin{bmatrix} p_9 & 0 \\ 0 & p_{10} \end{bmatrix} \quad (\text{EQ.3.29})$$

$$c_t = \begin{pmatrix} p_{11} - p_{12}K_t^d \\ p_{13} - p_{14}K_t^d \end{pmatrix}, p_{15} = d \quad (\text{EQ.3.30})$$

### 3.2 Pseudo code

```

/// Initialization phases: parameters contains
///     - initial value for model state + measurement of model
///     - measurement of state and model variance
Kalman2D k = new Kalman2D(parameters);
k.Setup( parameters );
int length = timeSeries.Length;

Point2D[] kalmanResult = new Point2D[length];

```

```

/// the loop to update in real time
for( int i = 0; i<length; ++i )
{
    if( i<Period )
    {
        k.Predict();
        k.Update(timeSeries[i]);

        kalmanResult.Set(0, timeSeries[i]);
        kalmanResult.Set(1, timeSeries[i]);
    }
    else
    {
        k.Predict();
        kalmanResult.Set(0, k.X.Get(0,0) );
        k.Update(timeSeries[i]);
        kalmanResult.Set(1, k.X.Get(0,0) );
    }
}

```

Where the pseudo code for Predict and Update value is given as follows:

```

// <summary>
// Predict the state
// </summary>
public void Predict()
{
    // Predict to now, then update.
    // Predict:
    //  $X = \Phi * X + C$ 
    //  $P = \Phi * P * \Phi^T + Q$ 
    m_x = Phi*m_x+C;
    m_p = Phi*P*Transpose(Phi) + Q;
}

// <summary>
// Update the state thanks to the realized measurement Y
// </summary>
public void Update( Point1D Y )
{
    // Update:
    //  $I = Y - (HX + D)$  Called the innovation= measurement – state transformed by H.
    m_I= Y(t)-(H*m_X+D);
    //  $S = H * P * H^T + R$  S= Residual covariance = covariance transformed by H + R
    m_S= H*m_P*Transpose(T) + R;
    //  $K = P * H^T * S^{-1}$  K= Kalman gain = variance / residual covariance.
    m_K= m_P * Transpose(H) * Inverse(S);
    //  $X = X + K * I$  Update with gain the new measurement
    m_X += m_K*Y;
    //  $P = (I - K * H) * P$  Update covariance to this time.
    m_P= (I - K * H) * P;
}

```

## 4 TRADING STRATEGIES WITH KALMAN FILTER

### 4.1 Basic concepts

KF model enables us various things:

- It smoothes any data. Hence the data produced by the KF can be used instead of prices to remove any spike. This opens multiple options as these inputs can be used in cross over moving averages strategies, MACD indicator, oscillators and combination of these. We do not explore this as the paper goal is to study the predictive power of KF models.

-it can be used as a predictive tool to help deciding when entering long or short strategies.

We compare the prediction with the current. This is precisely the subject of this paper.

### 4.2 Pseudo code

```
/// <summary>
/// Called on each new bar event
/// </summary>
protected override void OnNewBar()
{
    if (KalmanFilter(Param1,...,ParamN).Predict[0] > Close[1]+Offset)
        EnterLong();
    else if (KalmanFilter(Param1,...,ParamN).Predict[0] < Close [1]-Offset)
        EnterShort();}
}
```

## RESULTS

### 5 NUMERICAL RESULTS

#### 5.1 Description of the sample set

To test the efficiency of KF models 1, 2, 3 and 4, we use the E-mini-S&P-500 continuation Future, whose RIC is **Esc1**. We use the Eikon App “Trading Robot” that has been developed by the author. We look at daily data between 28 Feb 2015 and 28 Feb 2016.

#### 5.2 Comparison of Kalman filters with standard technical indicators

We provide graphics of various indicators to measure how KFs best fit price information.

We display:

- some standard technical analysis indicators:

- Moving averages with lag: standard and exponential moving average with 12 days period
- Moving averages with zero lag: double exponential moving average with 12 days period as (EQ.2.9) and triple exponential moving average with 12 days period as (EQ.2.10)

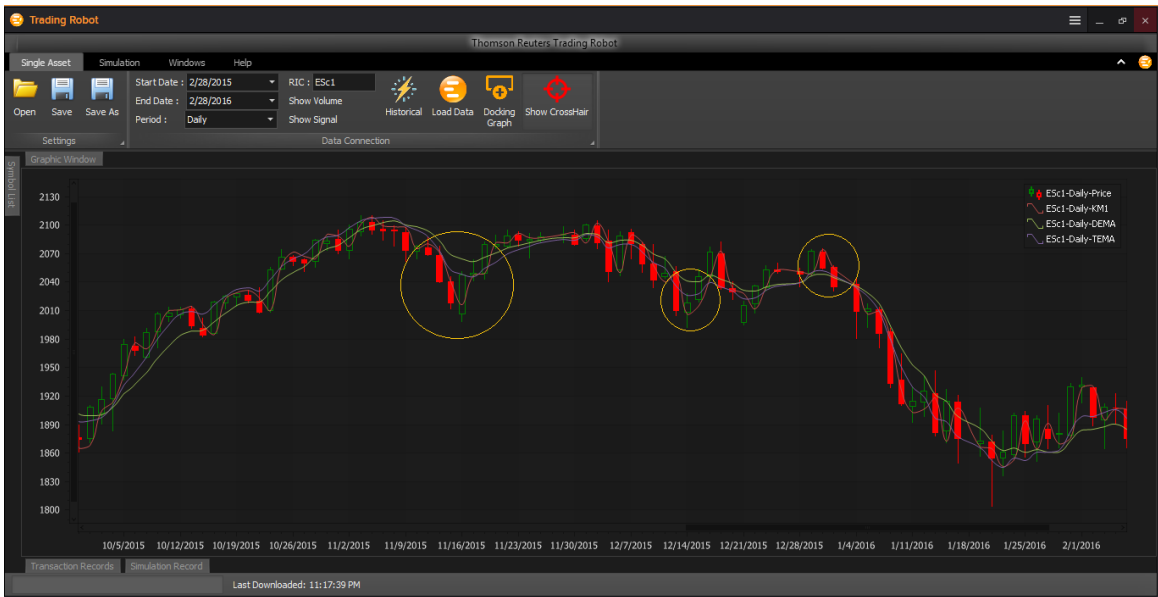
- the different KF indicators, KF model 1, 2, 3 and 4.

In Figure 1, we see that the KF model 1 sticks much better to price data than any of the two moving averages. This is normal as KF model has 0 to 1 period lag. We do not show in this graphic the other KF models as they would be barely distinguishable. In Figure 2 and Figure 3, we compare KF model with zero-lag moving averages like DEMA or TEMA. We emphasize area of difference with orange circles and see that KF models stick much better

to price data. In Figure 4, we compare the different KF models and see that KF model 1&2 are similar while models 3&4 are also similar, with an advantage to the latter ones.



*Figure 1: Comparison of Kalman filter with classical moving averages. The red line representing the KF model 1 sticks much better to the price data than any of the two moving averages (standard and exponential ones with both 12 periods).*



*Figure 2: Comparison of Kalman filter with double and triple exponential moving averages. Red lines representing the KF model 1 stick much better to the price data than DEMA or TEMA as displayed in orange circles.*

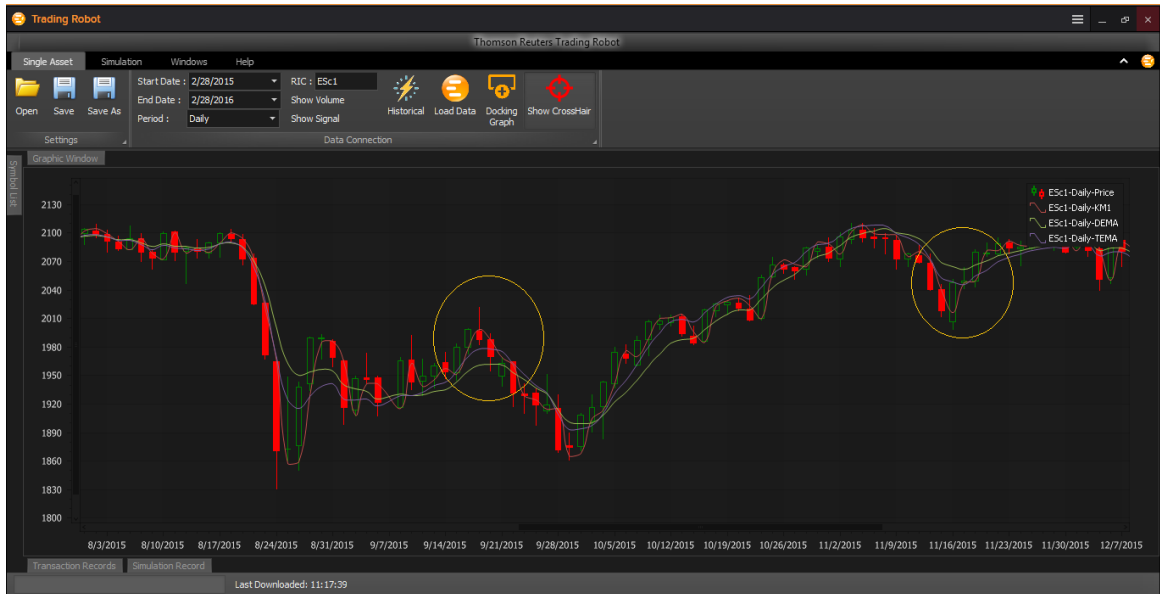


Figure 3: Zoom on differences between Kalman filter and zero lag moving averages. KF model 1 reacts faster to price changes as emphasized by orange circles.



Figure 4: Comparison between the different Kalman filters. Within the KF model family, model 3 and 4 are even better than model 1 and 2. Model 1 and 2 (respectively model 3 and 4) have similar behaviors.

### 5.3 Kalman filter trading strategies performance

We look at the same one-year of data and compute the optimal parameters for the 4 KF models. For each model, we use no leverage, trade only one future contract regardless of the current trading account. We also assume a 4 dollar round trip commission, which is the observed price at retail brokers like Interactive-Brokers. For large trader with more than 20,000 contracts per months and CME membership, round trip commission lowers to 1.4 USD.

Table 1 shows that the best model is model 4 with an annual net profit of 39.5 k USD, followed by model 3 with 29 k USD and the last two being model 2 and 1 with net profit of 22 and 19 k USD.

We can make various remarks:

- The final model ranking makes sense as model 4 is richer than 3 that is itself richer than 2 that is richer than 1.
- The best model, KF 4, provides a nice net profit, 39 k with a max drawdown of -2,600, hence representing a ratio of net profit over drawdown (also called recovery ratio) of 15. This is excellent!
- E-mini-S&P daily margin is about 5 to 6 k USD, hence 40k USD net profit is an amazing statistic. In addition, model 4 incurs only positive monthly PnL (Figure 5).
- KF model 3 has a nice and steady cumulative profit curve (Figure 6), while model 4 outperforms because it captures a few large additional trades (Figure 5 and Figure 9).
- KF model 1 & 2 are Kalman filter models already explored in literature. We find some negative monthly PnL and large drawdown (see Figure 7 and Figure 8). This is a known feature as these models have a poor dynamic. This may explain why these standard KF models have been disregarded.
- The difference between KF model 3 and 4 is the oscillator factor. This confirms the well-known fact that oscillators capture others features than trending indicators and catch any mean reverting market (in trading range environment). The combination of trend following factors (like in model 3) with the new extra term inspired from oscillators yields a powerful model called 4. We can notice that parameter 14,  $N_2$ , is null. It indicates that the oscillator factor plays a role only on short term factor. This can be interpreted as an empirical evidence that range trading has only influence on short term while trend dominates in long term.
- The parameters 11 and 13 in KF model 4 represent the neutrality level at which the oscillator factors changes from bullish to bearish. It is amazing that its optimal value turns out to be 50%, which is also a well-known feature of oscillators where the level of neutrality is 50%

We provide optimal parameters in Table 2. We also provide various statistics for KF model 4, 3, 2 and 1 (starting with the best model and going to the worst) in Table 3, Table 4, Table 5, Table 6 and the list of all trades in Table 7

We provide in Figure 5, Figure 6, Figure 7, Figure 8 the cumulative profit and loss curve for trading strategy of model 4, 3, 2 and 1, starting by the best one. Figure 9 zooms on the period where model 4 locks in large profit due to accurate prediction of turning points.

Model	Net Profit	Gross Profit	Gross Loss	Drawdown	Trades	Commission	Recovery ratio	Sharpe Ratio
Kalman Filter 1	18,755	39,151	-20,396	-7,348	55	220	2.55	0.72
Kalman Filter 2	22,380	40,747	-18,367	-7,348	55	220	3.05	0.76
Kalman Filter 3	29,022	47,548	-18,526	-3,800	57	228	7.64	1.22
Kalman Filter 4	39,558	50,243	-10,685	-2,600	48	192	15.21	0.73

Table 1: Trading performance of Kalman filter model 1, 2, 3 and 4.

Model	Kalman Filter 1	Kalman Filter 2	Kalman Filter 3	Kalman Filter 4
Parameter 1	5.00	5.00	1.00	1.00
Parameter 2	5.00	5.00	0.40	0.40
Parameter 3	45.00	41.00	1.20	1.20
Parameter 4	10.00	1.00	1.00	1.00
Parameter 5		1.00	1.00	1.00
Parameter 6			0.80	0.80
Parameter 7			0.40	0.40
Parameter 8			0.70	0.70
Parameter 9			1.00	1.00
Parameter 10			0.40	0.40
Parameter 11				0.50
Parameter 12				0.90
Parameter 13				0.50
Parameter 14				-
Parameter 15				5.00

Table 2: Model parameters for Kalman filter model 1, 2, 3 and 4



Kalman Filer Model 4			
Field	All	Long	Short
Net Profit (A+B)	39,558	17,279	22,279
Gross Profit (A)	50,243	20,957	29,286
Gross Loss (B)	(10,685)	(3,678)	(7,007)
Total Commission	192	96	96
Drawdown	(2,600)	(2,137)	(2,520)
Sharpe Ratio	0.73	0.84	0.55
Profit Factor (A/B)	4.70	5.70	4.18
Number of Trades	48	24	24
Winning Trades	30	17	13
Average Trade Profit	824	720	928
Average Winning Trade	1,675	1,233	2,253
Largest Winning Trade	11,309	5,434	11,309
Max. conseq. Winners	6	5	3
Losing Trades	18	7	11
Average Losing Trade	(594)	(525)	(637)
Largest Losing Trade	(1,729)	(1,729)	(1,267)
Max. conseq. Losers	4	2	3
Ratio avg. Win / avg. Loss	2.82	2.35	3.54
Winning/Total	0.63	0.71	0.54
Avg. Time in Market	6.92 days	3.88 days	9.96 days
Profit per Month	3,623	1,583	2,047
Max. Time to Recover	58 days	56 days	92 days

Table 3: Trading strategy statistics for Kalman filter model 4

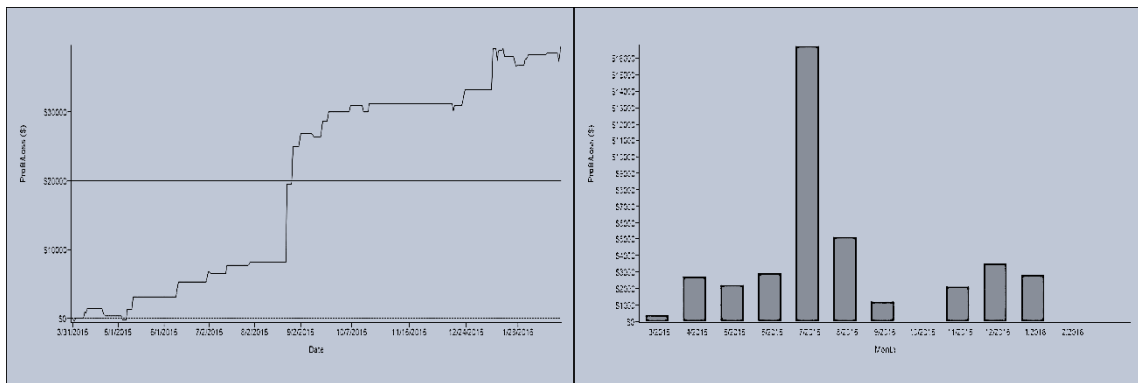


Figure 5: Cumulative profit and monthly PnL distribution for KF model 4

Kalman Filer Model 3			
Field	All	Long	Short
Net Profit (A+B)	29,022	12,009	17,013
Gross Profit (A)	47,548	24,403	23,145
Gross Loss (B)	(18,526)	(12,394)	(6,132)
Total Commission	228	116	112
Drawdown	(3,820)	(3,366)	(1,579)
Sharpe Ratio	1.22	0.38	1.65
Profit Factor (A/B)	2.57	1.97	3.77
Number of Trades	57	29	28
Winning Trades	35	18	17
Average Trade Profit	509	414	608
Average Winning Trade	1,359	1,356	1,361
Largest Winning Trade	5,234	5,234	4,271
Max. conseq. Winners	14	7	7
Losing Trades	22	11	11
Average Losing Trade	(842)	(1,127)	(557)
Largest Losing Trade	(2,879)	(2,879)	(1,579)
Max. conseq. Losers	5	3	3
Ratio avg. Win / avg. Loss	1.61	1.20	2.44
Winning/Total	0.61	0.62	0.61
Avg. Time in Market	5.82 days	6.45 days	5.18 days
Profit per Month	2,658	1,100	1,860
Max. Time to Recover	53 days	64 days	71 days

Table 4: Trading strategy statistics for Kalman filter model 3

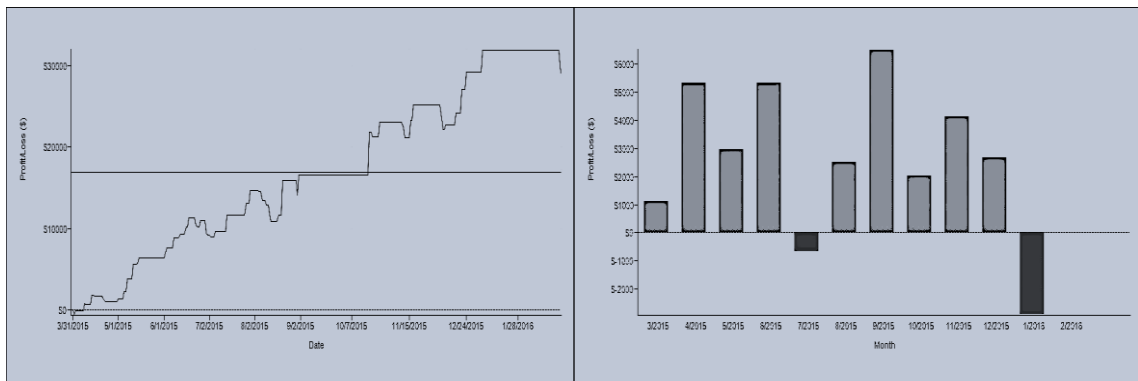


Figure 6: Cumulative profit and monthly PnL distribution for KF model 3

Kalman Filer Model 2			
Field	All	Long	Short
Total Net Profit	22,380	8,692	13,688
Gross Profit	40,747	19,611	21,136
Gross Loss	(18,367)	(10,919)	(7,448)
Commission	220	108	112
Drawdown	(7,348)	(6,628)	(2,283)
Sharpe Ratio	0.76	0.32	0.55
Profit Factor	2.22	1.80	2.84
Number of Trades	55	27	28
Winning Trades	32	16	16
Average Trade Profit	407	322	489
Average Winning Trade	1,273	1,226	1,321
Largest Winning Trade	6,521	3,221	6,521
Max. conseq. Winners	4	6	3
Losing Trades	23	11	12
Average Losing Trade	(799)	(993)	(621)
Largest Losing Trade	(3,679)	(3,679)	(1,717)
Max. conseq. Losers	4	5	2
Ratio avg. Win / avg. Loss	1.59	1.23	2.13
Winning/Total	0.58	0.59	0.57
Avg. Time in Market	6.04 days	6.41 days	5.68 days
Profit per Month	2,050	801	1,254
Max. Time to Recover	132 days	146 days	70 days

Table 5: Trading strategy statistics for Kalman filter model 2

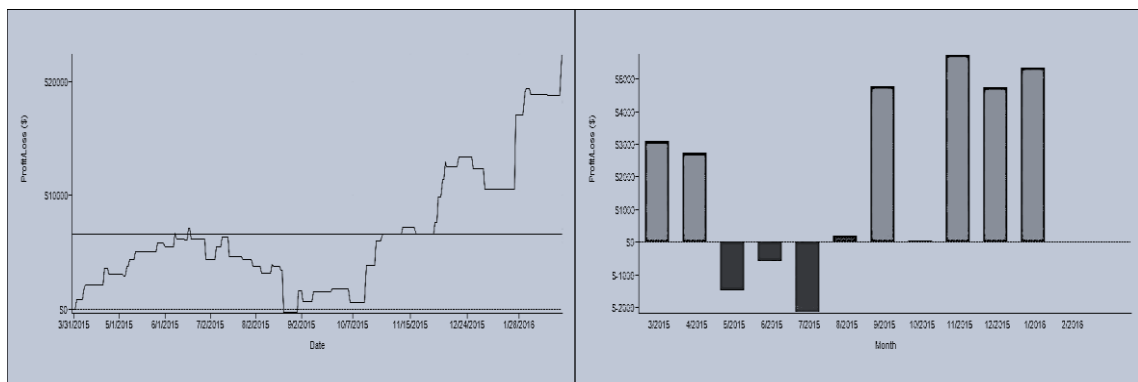


Figure 7: Cumulative profit and monthly PnL distribution for KF model 2

Kalman Filter Model 1			
Field	All	Long	Short
Total Net Profit	18,755	6,880	11,876
Gross Profit	39,151	18,861	20,290
Gross Loss	(20,396)	(11,982)	(8,415)
Commission	220	108	112
Drawdown	(7,348)	(6,628)	(2,283)
Sharpe Ratio	0.72	0.26	0.48
Profit Factor	1.92	1.57	2.41
Number of Trades	55	27	28
Winning Trades	31	16	15
Average Trade Profit	341	255	424
Average Winning Trade	1,263	1,179	1,353
Largest Winning Trade	6,521	3,221	6,521
Max. conseq. Winners	4	6	2
Losing Trades	24	11	13
Average Losing Trade	(850)	(1,089)	(647)
Largest Losing Trade	(3,679)	(3,679)	(1,717)
Max. conseq. Losers	4	5	2
Ratio avg. Win / avg. Loss	1.49	1.08	2.09
Winning/Total	0.56	0.59	0.54
Avg. Time in Market	6.04 days	6.45 days	5.64 days
Profit per Month	1,718	634	1,088
Max. Time to Recover	132 days	146 days	71 days

Table 6: Trading strategy statistics for Kalman filter model 1

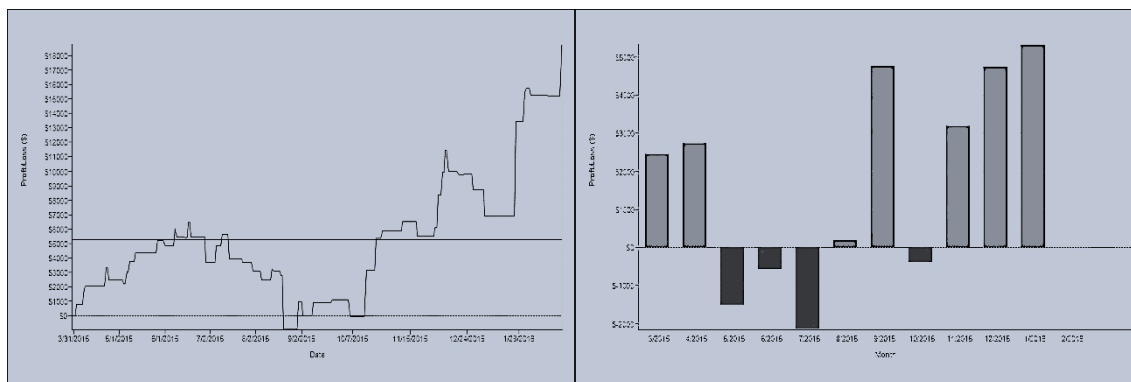


Figure 8: Cumulative profit and monthly PnL distribution for KF model 1

Trade	Direction	Entry date	Entry price	Exit date	Exit price	Profit	PnL	Commission	Days in position
1	Long	Mar-31-15	2,043	Apr-01-15	2033.5	(454.0)	(454.0)	4	2
2	Short	Apr-01-15	2,034	Apr-02-15	2026	371.0	(83.0)	4	2
3	Long	Apr-02-15	2,026	Apr-08-15	2045.25	958.5	875.5	4	4
4	Short	Apr-08-15	2,045	Apr-09-15	2047.5	(116.5)	759.0	4	2
5	Long	Apr-09-15	2,048	Apr-10-15	2061.5	696.0	1,455.0	4	2
6	Short	Apr-10-15	2,062	Apr-21-15	2076.25	(741.5)	713.5	4	8
7	Long	Apr-21-15	2,076	Apr-22-15	2069.75	(329.0)	384.5	4	2
8	Short	Apr-22-15	2,070	May-04-15	2081.75	(604.0)	(219.5)	4	9
9	Long	May-04-15	2,082	May-05-15	2079.75	(104.0)	(323.5)	4	2
10	Short	May-05-15	2,080	May-07-15	2048.25	1,571.0	1,247.5	4	3
11	Long	May-07-15	2,048	May-11-15	2084.75	1,821.0	3,068.5	4	3
12	Short	May-11-15	2,085	Jun-10-15	2062.25	1,121.0	4,189.5	4	23
13	Long	Jun-10-15	2,062	Jun-11-15	2083.5	1,058.5	5,248.0	4	2
14	Short	Jun-11-15	2,084	Jul-01-15	2054.25	1,458.5	6,706.5	4	15
15	Long	Jul-01-15	2,054	Jul-03-15	2049.75	(229.0)	6,477.5	4	3
16	Short	Jul-03-15	2,050	Jul-10-15	2050.5	(41.5)	6,436.0	4	6
17	Long	Jul-10-15	2,051	Jul-14-15	2074.5	1,196.0	7,632.0	4	3
18	Short	Jul-14-15	2,075	Jul-29-15	2071	171.0	7,803.0	4	12
19	Long	Jul-29-15	2,071	Jul-30-15	2077.5	321.0	8,124.0	4	2
20	Short	Jul-30-15	2,078	Aug-24-15	1851.25	11,308.5	19,432.5	4	18
21	Long	Aug-24-15	1,851	Aug-28-15	1960	5,433.5	24,866.0	4	5
22	Short	Aug-28-15	1,960	Sep-02-15	1921.25	1,933.5	26,799.5	4	4
23	Long	Sep-02-15	1,921	Sep-10-15	1920.25	(54.0)	26,745.5	4	7
24	Short	Sep-10-15	1,920	Sep-11-15	1928.25	(404.0)	26,341.5	4	2
25	Long	Sep-11-15	1,928	Sep-17-15	1974.75	2,321.0	28,662.5	4	5
26	Short	Sep-17-15	1,975	Sep-21-15	1948.5	1,308.5	29,971.0	4	3
27	Long	Sep-21-15	1,949	Oct-06-15	1967.5	946.0	30,917.0	4	12
28	Short	Oct-06-15	1,968	Oct-15-15	1986.25	(941.5)	29,975.5	4	8
29	Long	Oct-15-15	1,986	Oct-19-15	2010.25	1,196.0	31,171.5	4	3
30	Short	Oct-19-15	2,010	Dec-15-15	2031	(1,041.5)	30,130.0	4	42
31	Long	Dec-15-15	2,031	Dec-16-15	2048.25	858.5	30,988.5	4	2
32	Short	Dec-16-15	2,048	Dec-22-15	2022.75	1,271.0	32,259.5	4	5
33	Long	Dec-22-15	2,023	Dec-23-15	2043	1,008.5	33,268.0	4	2
34	Short	Dec-23-15	2,043	Jan-11-16	1924.5	5,921.0	39,189.0	4	12
35	Long	Jan-11-16	1,925	Jan-14-16	1890	(1,729.0)	37,460.0	4	4
36	Short	Jan-14-16	1,890	Jan-15-16	1862	1,396.0	38,856.0	4	2
37	Long	Jan-15-16	1,862	Jan-18-16	1869.5	371.0	39,227.0	4	2
38	Short	Jan-18-16	1,870	Jan-19-16	1894	(1,229.0)	37,998.0	4	2
39	Long	Jan-19-16	1,894	Jan-26-16	1878.5	(779.0)	37,219.0	4	6
40	Short	Jan-26-16	1,879	Jan-27-16	1890.25	(591.5)	36,627.5	4	2
41	Long	Jan-27-16	1,890	Jan-28-16	1894	183.5	36,811.0	4	2
42	Short	Jan-28-16	1,894	Jan-29-16	1894.5	(29.0)	36,782.0	4	2
43	Long	Jan-29-16	1,895	Feb-02-16	1913.5	946.0	37,728.0	4	3
44	Short	Feb-02-16	1,914	Feb-04-16	1901.5	596.0	38,324.0	4	3
45	Long	Feb-04-16	1,902	Feb-17-16	1906	221.0	38,545.0	4	10
46	Short	Feb-17-16	1,906	Feb-25-16	1931.25	(1,266.5)	37,278.5	4	7
47	Long	Feb-25-16	1,931	Feb-26-16	1959.75	1,421.0	38,699.5	4	2
48	Short	Feb-26-16	1,960	Feb-26-16	1942.5	858.5	39,558.0	4	1

Table 7: Trades list for Kalman model 4

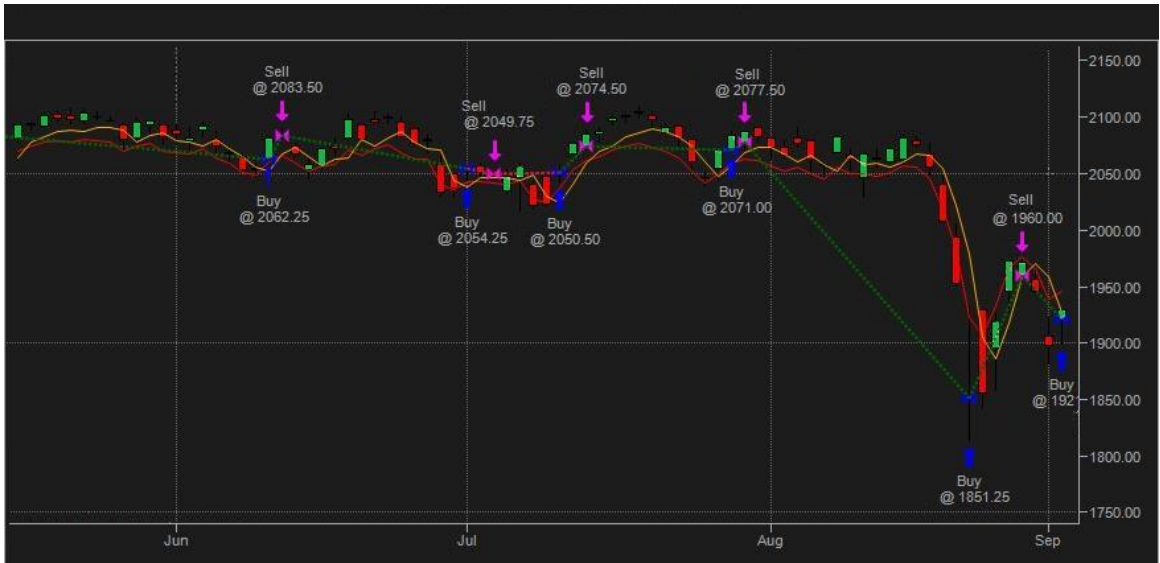


Figure 9: Efficiency of Kalman filter model 4 to detect trends

## 6 DISCUSSION

Parameters for the Kalman filter models are obtained by a general optimization. Hence they provide the best possible choice of parameters. Results presented here should be analyzed with this in mind.

We clearly see that model 1 and 2 provides similar results about 20 k of net profit for one year trading the E-mini contract. When adding the new feature of a short and long term model factor, we increase net profit to 29 k, which is substantial. We reduce maximum drawdown from -7,300 USD to -3,800 USD. This is a material gain. Model 4 performs even better as we generate an additional 10 k with net profit skyrocketing to 40 k USD with an further reduction of drawdown to -2,600 USD.

## CONCLUSION

In this paper, we empirically validate that Kalman filters with meaningful dynamics have predictive power. After reviewing moving averages and the general equation for its lag at order  $n$  with respect to the one at first order, we examine 4 Kalman filter models: the common one with speed and acceleration concepts, the traditional statistical one referred to as the local linear trend, a new model that splits price contribution between short and long term effect and a last one that encompasses all above with an additional term corresponding to the position of the price with regards to its extremums. We find empirically that model 4 performs far better than any other models. We also confirm that KF models have zero lag and capture price dynamic better than previous combinations of moving averages like DEMA or TEMA. We confirm on model 4 that oscillators and trend following indicators are a powerful combination that performs better than any single indicators.



## REFERENCES

- [Bruder-Dao-Richard-Roncalli-2011]** Benjamin Bruder, Tung-Lam Dao, Jean Charles Richard, Thierry Roncalli, Trend Filtering Methods for Momentum Strategies; SSRN paper. [http://papers.ssrn.com/sol3/papers.cfm?abstract\\_id=2289097](http://papers.ssrn.com/sol3/papers.cfm?abstract_id=2289097)
- [Cazalet-Zheng-2014]** Zelia Cazalet, Ban Zheng, Hedge Funds in Strategic Asset Allocation, White Paper #11 <http://www.thehedgefundjournal.com/sites/default/files/hf-strategic-asset-allocation-lyxor-mar-2014.pdf>
- [Chan-2013]** Ernie Chan, Algorithmic Trading: Winning Strategies and Their Rationale, Wiley 2013 <http://www.amazon.com/Algorithmic-Trading-Winning-Strategies-Rationale/dp/1118460146>
- [Dao-2011]** Tung-Lam Dao, Momentum Strategies: From Novel Estimation Techniques to Financial Applications, SSRN White Paper [http://papers.ssrn.com/sol3/papers.cfm?abstract\\_id=2358988](http://papers.ssrn.com/sol3/papers.cfm?abstract_id=2358988)
- [Dürschner-2012]** Manfred G. Dürschner, Moving Averages 3.0, IFTA Journal 2012, [http://ifta.org/public/files/journal/d\\_ifta\\_journal\\_12.pdf](http://ifta.org/public/files/journal/d_ifta_journal_12.pdf)
- [Ehlers-2001a]** John F. Ehlers: Signal Analysis Concepts (Internet, 2001), <http://www.technicalanalysis.org.uk/moving-averages/Ehle.pdf>
- [Ehlers-2001b]** John F. Ehlers: Zero Lag, MesaSoftware Technical Paper 2001 <http://www.mesasoftware.com/papers/ZeroLag.pdf>
- [Haleh-et-al-2011]** H. Haleh, B. Akbari Moghaddam, and S. Ebrahimijam, A New Approach to Forecasting Stock Price with EKF Data Fusion, International Journal of Trade, Economics and Finance, Vol. 2, No. 2, April 2011
- [Kalman-1960]** Kalman, R. E. A New Approach to Linear Filtering and Prediction Problems". Journal of Basic Engineering 82: 35, 1960.
- [Kalman-Filter-Wikipedia]** [https://en.wikipedia.org/wiki/Kalman\\_filter](https://en.wikipedia.org/wiki/Kalman_filter)
- [Martinelli-2006]** Martinelli, Rick Harnessing The (Mis)Behavior Of Markets, Technical Analysis of Stocks & Commodities, Volume 24: June, 2006.
- [Martinelli-Rhoads-2010]** Martinelli, Rick, and Neil Rhoads, Predicting Market Data Using The Kalman Filter, part 1, Technical Analysis of Stocks & Commodities, Volume 28: January 2010
- [Mulloy-1994]** Patrick Mulloy: Smoothing Data With Faster Moving Averages, Stocks & Commodities Magazine (February 1994)

## APPENDIX

### **Proof A.1:**

We want to prove

$$LAG MA \odot^k(w_0, \dots, w_N) = k LAG MA(w_0, \dots, w_N) \quad (\text{EQ.2.7})$$

For  $k=1$ , this result is obviously true. If the result is true at order  $k - 1$ , let us show that it holds at order  $k$ . We want to compute the following lag

$$LAG MA \odot^k(w_0, \dots, w_N) = \frac{\sum_{i_1=0, \dots, i_k=0}^N w_{i_1} \dots w_{i_k} T_{i_1 + \dots + i_k}}{\sum_{i_1=0, \dots, i_k=0}^N w_{i_1} \dots w_{i_k}} \quad (\text{A.1.1})$$

Which can be reformulated as:

$$\frac{\sum_{i_1=0, \dots, i_{k-1}=0}^N w_{i_1} \dots w_{i_{k-1}} \sum_{i_k=0}^N w_{i_k} (T_{i_1 + \dots + i_{k-1}} + T_{i_k})}{\sum_{i_1=0, \dots, i_{k-1}=0}^N w_{i_1} \dots w_{i_{k-1}} \sum_{i_k=0}^N w_{i_k}} \quad (\text{A.1.2})$$

Or

$$\frac{\sum_{i_1=0, \dots, i_{k-1}=0}^N w_{i_1} \dots w_{i_{k-1}} T_{i_1 + \dots + i_{k-1}}}{\sum_{i_1=0, \dots, i_{k-1}=0}^N w_{i_1} \dots w_{i_{k-1}}} + \frac{\sum_{i_k=0}^N w_{i_k} T_{i_k}}{\sum_{i_k=0}^N w_{i_k}} \quad (\text{A.1.3})$$

Or

$$= (k - 1) LAG MA(w_0, \dots, w_N) + LAG MA(w_0, \dots, w_N) \quad (\text{A.1.4})$$

Which proves the result!

### **Proof A.2:**

If we denote by  $a$  and  $b$  the coefficient of the linear combination between the moving average and the second order recursive moving average, the resulting formula should be

$$aMA + bMA \odot^2 \quad (\text{A.2.1})$$

With the constraints that first, the sum of the coefficients should be equal to 1, hence

$$a + b = 1 \quad (\text{A.2.2})$$

Second, the lag of the resulting combination should be 0, hence

$$a + 2b = 0 \quad (\text{A.2.3})$$

It is easy to solve this linear system and find

$$a = 2, b = -1 \quad (\text{A.2.4})$$

Which is the result!

**Proof A.3:**

If we denote by  $a$ ,  $b$  and  $c$  the coefficient of the linear combination between the moving average, the second and the third order recursive moving average, the resulting formula should be

$$aMA + bMA\ominus^2 + cbMA\ominus^3 \quad (\text{A.3.1})$$

With the following constraints. First, the sum of the coefficients should be equal to 1, hence

$$a + b + c = 1 \quad (\text{A.3.2})$$

Second, the lag of the resulting combination should be 0, hence

$$a + 2b + 3c = 0 \quad (\text{A.3.3})$$

Third, we impose that the coefficient for the third order recursive moving average is equal to 1,

$$c = 1 \quad (\text{A.3.4})$$

It is easy to solve this linear system and find

$$a = 3, b = -3, c = 1 \quad (\text{A.3.5})$$

Which is the result!