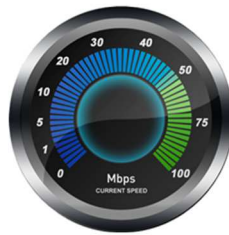


Speedpro MT5 to MT4 Trade Copier Full Manual

Speedpro MT5 to MT4 Trade Copier



Visit: <http://copymt5tomt4.ucoz.com/>

Note that for quick start, please read the provided quick manual.

Table of Contents

1. Value of Speedpro MT 5 to MT 4 Trade Copier	3
2. Main Features of Speedpro MT 5 to MT 4 Trade Copier	3
3. Ways to connect your Meta Trader 5 terminal to your Meta Trader 4 terminal	5
4. Quick 1 minute Installation guide for experienced users of MetaTrader Platform.....	5
5. Quick 5 minutes Installation Guide for experienced users of MetaTrader Platform	6
6. Step by Step guide to install for Meta Trader beginners	7
7. Trade Copier Variable for your Meta Trader 5 terminal (Important)	14
8. Trade Copier Variable for your Meta Trader 4 terminal (Important)	16
9. How to connect many Meta Trader 5 terminals to single Meta Trader 4 terminal	18
10. How to get the live account version of this Speedpro Trade Copier	18
11. Few tips to make the MT5 to MT4 Trade Copier to copy trades faster.....	19
12. Trouble Shooting.....	20

1. Value of Speedpro MT 5 to MT 4 Trade Copier

With “Speedpro MT 5 to MT 4 Trade Copier”, there are unlimited opportunities to generate value for our customers. You can make money or you can test your brilliant trading strategy in the international Meta Trader 4 trading competition using your Meta Trader 5 expert advisors. Some of my customers are using this Speedpro Trade Copier to grow their investment in various ways. Some of them generate at least 10 % growth each month and even more for some other customers.

Here are few considerations about the value of this MT 5 to MT 4 Trade Copier.

- Get Meta Trader 5 signals in your Meta Trader 5 demo account, copy the signal to your live Meta Trader 4 accounts (You can mix Meta Trader 5 and Meta Trader 4 signals into one live MT 4 account with this Trade Copier.)
- Build and test your trading strategy in the advanced strategy tester in the Meta Trader 5 and use the Expert Advisors with your favourite Meta Trader 4 live brokers.
- Build and test your trading strategy in the advanced strategy tester in the Meta Trader 5 and enter the international Meta Trader 4 Trading competition. (Note that there are dozens of FX trading competition in Meta Trader 4 but none in Meta Trader 5.)
- Saving a lot of time from doing conversion coding work from Meta Trader 5 to Meta Trader 4 (There is no need to spend a lot of time to rewrite your code from Meta Trader 5 to Meta Trader 4. Just simply copy the trades from your Meta Trader 5 terminal to Meta Trader 4 terminal.)
- Distribute signals from your Meta Trader 5 expert advisors to your multiple Meta Trader 4 terminals. (You can connect single MetaTrader 5 platforms to multiple of Meta Trader 4 terminals.)

Doesn't matter you are coder or general users or beginner or professional. You will get lots of benefits from this Speedpro MT 5 to MT 4 Trade Copier.

2. Main Features of Speedpro MT 5 to MT 4 Trade Copier

Speedpro MT 5 to MT 4 Trade Copier was updated many times by adding advanced features at each time. Currently available features include:

- Copy trades from a Meta Trader 5 terminal up to many different Meta Trader 4 terminals in the same computer.

- Copy trades from many Meta Trader 5 terminals to single Meta trader 4 terminals in the same computer.
- You can also reverse trade if it is necessary (i.e Buy in MT 5=> Sell in MT 4 and Sell in MT 5 => Buy in MT 4)
- The trade copier will not disturb your manual trades and other trades by other expert advisors in your Meta Trader 4 terminal. Therefore you can combine other expert advisors with this trade copier. You can even mix MT 5 and MT 4 signal subscription into your live Meta Trader 4 terminal.
- The Trade Copier has the automatic scaling function of your Meta Trader 4 lot size by comparing the balance between your MT 5 and MT 4 terminal. However you can also control your lot size by using simple multiplier.
- You can hide specific currency pairs in your MT 5 terminal and you can skip these currency pairs from copying to your MT 4 terminal.
- You can copy positions from your MT 5 terminal to MT 4 terminal regardless of the different suffix in different brokers.
- Using the custom user mapping function, you can walk around with unmatched currency pairs or commodity symbols between brokers. For example, you can make the trade copier to copy the trade of “Gold” in MT 5 terminal to “XAUUSD” in MT 4 terminal. You can do the same for Silver too.
- You can trade all the Forex, Gold and Silver symbols without any problem. Less supportive but you might also able to trade other index and futures too.

3. Ways to connect your Meta Trader 5 terminal to your Meta Trader 4 terminal

Ways to connect MT 5 to MT 4 are listed below:

- You can connect single Meta Trader 5 terminal to Single Meta Trader 4 terminal (One to One)
- You can connect single Meta trader 5 terminal up to five Meta Trader 4 terminals (One to Many)
- You can connect single Meta Trader 5 terminal to Single Meta Trader 4 terminal and you can repeat this any many times as you want (Multiple of One to One)
- You can connect many Meta Trader 5 terminals to Single Meta Trader 4 terminal (Many to One)
- You can connect many Meta Trader 5 terminals to many Meta Trader 4 terminals (Many to Many)
- You can also mix and match Meta Trader 5 signals and Meta Trader 4 signal into your single Meta Trader 4 terminal and you can trade with your favourite Meta Trader 4 broker.

4. Quick 1 minute Installation guide for experienced users of MetaTrader Platform

You need following two files:

- SenderMT5_EA.ex5 (Sender EA for your Meta Trader 5 terminal) – EA to send signal of your trade positions from your MT5 platform. (Note that the file name maybe slightly different to yours.)
- ReceiverMT4_EA.ex4 (Receiver EA for your Meta Trader 4 terminal) – EA to receive the signals from your MT5 platform. (Note that the file name might be slightly different to yours.)

Move SenderMT5_EA.ex5 to your MT 5 Expert Advisor Folder and also move ReceiverMT4_EA.ex4 to your MT4 Expert Advisor Folder. Attach SenderMT5_EA.ex5 to any MT5 chart and copy and paste terminal path (Note that the terminal path normally looks like “C:\Users\.....\MQL4\Files”) to the EA

input variable setting in your MT5 terminal. Open MT4 terminal and attach ReceiverMT4_EA.ex4 file to any MT4 chart. Now the Trade Copier should start to work. Start to subscribe MT5 signal or start to run MT5 expert Advisors on your MT5 Terminal.

5. Quick 5 minutes Installation Guide for experienced users of MetaTrader Platform

You need following two files:

- SenderMT5_EA.ex5 (Sender EA for your Meta Trader 5 terminal) – EA to send signal of your trade positions from your MT5 platform. (Note that the file name maybe slightly different to yours.)
- ReceiverMT4_EA.ex4 (Receiver EA for your Meta Trader 4 terminal) – EA to receive the signals from your MT5 platform. (Note that the file name might be slightly different to yours.)

1. Copy “SenderMT5_EA.ex5” file to your MetaTrader 5 expert advisor folder
2. In your Market Watch of Metatrader 5 platform, keep only the currency pairs you want to trade (keeping few other currency pairs in the market watch are fine but better to keep minimum number of the currency for faster trade copy.
3. Copy “ReceiverMT4_EA.ex4” file to your MetaTrader 4 expert advisor folder
4. In your Market Watch of Metatrader 4 platform, keep the same currency pairs as possible with your MetaTrader 5 platform but this is not compulsory (but at least remove some non Forex pairs from your Market Watch such as #CLK400, etc.)

5. Get terminal path address of your MT4 "file" folder in your "MQL4" folder and enter that address when you attach "SenderMT5_EA.ex5" to any chart in your MetaTrader 5 platform (better to attach to an active currency pairs for fast update).
6. Attach "ReceiverMT4_EA.ex4" file to any chart (better to attach an active currency pairs for fast update) in your MetaTrader 4 platform.
7. That is it. Try to open any position in your MT5 platform manually. If the EAs are installed correctly then MT4 terminal should copy the positions immediately.
8. To use this MT5 to MT4 Trade Copier with your expert advisors, you need to open a chart to attach your expert advisors. Therefore, you need two charts in your Metatrader 5 platform if you want your profitable MT 5 EA to run with this Trade Copier.
9. Note that you can copy your positions from MetaTrader 5 platform up to five different MetaTrader 4 platforms in the same PC of yours. Just copy their terminal path to "SenderMT5_EA.ex5" EA when you attach them on your chart.
10. Choose if you want to scale MT 5 lot automatically or manually. If you set "AutomaticScaleOfPosition"=true, then the Trade Copier will scale MT 5 lot size automatically using the balance in your MT 4 and MT 5 terminals. Use "Ratio_Of_MT4_Lot_To_MT5_Lot" variable to further increase your MT 4 lot size. When "AutomaticScaleOfPosition"=true, then your final Lot Multiplier is calculated using following formula:

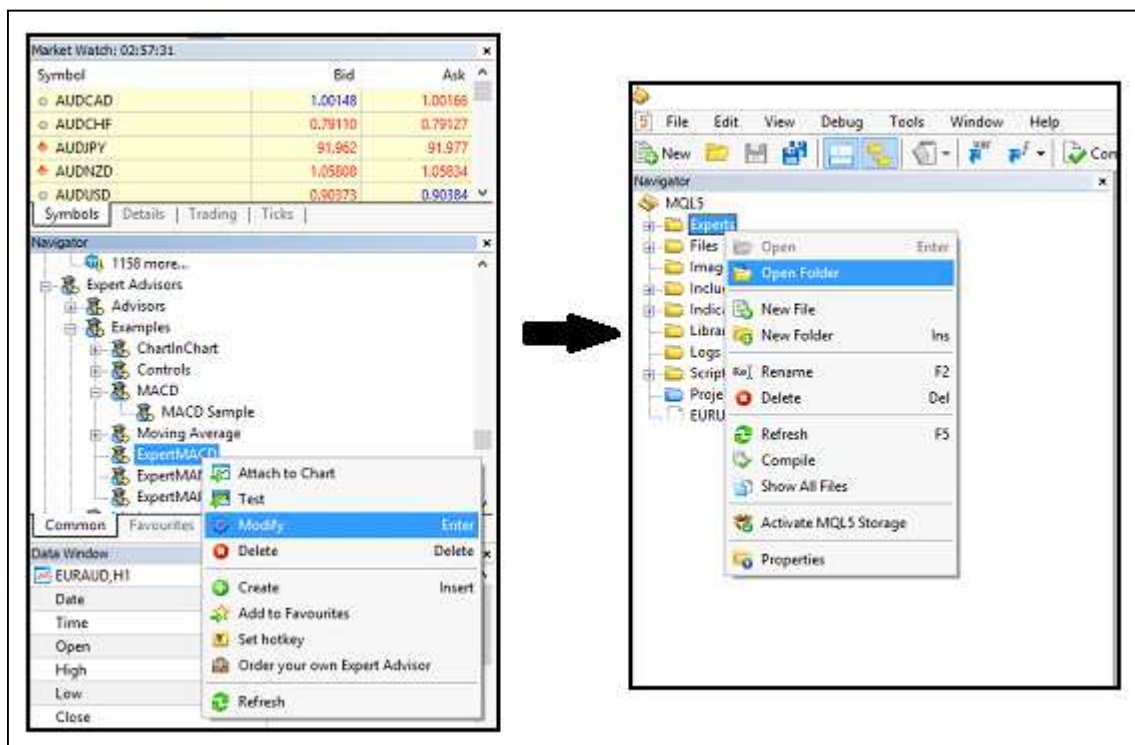
$$\text{Lot Multiplier} = (\text{MT 4 balance} / \text{MT 5 balance}) * \text{Ratio_Of_MT4_Lot_To_MT5_Lot}.$$
11. "AutomaticScaleOfPosition"=false, then "ManualLotMultiplier" variables in your "ReceiverMT4_EA.ex4" EA will be used to scale your MT 5 lot size for your MT 4 terminal. "ManualLotMultiplier" = 1.0 means that the exactly same lot size from MT5 platform will be copied to your MT 4 platform. If you choose ManualLotMultiplier=2.0, then twice greater lot size will be copied to your MT 4 platform.

6. Step by Step guide to install for Meta Trader beginners

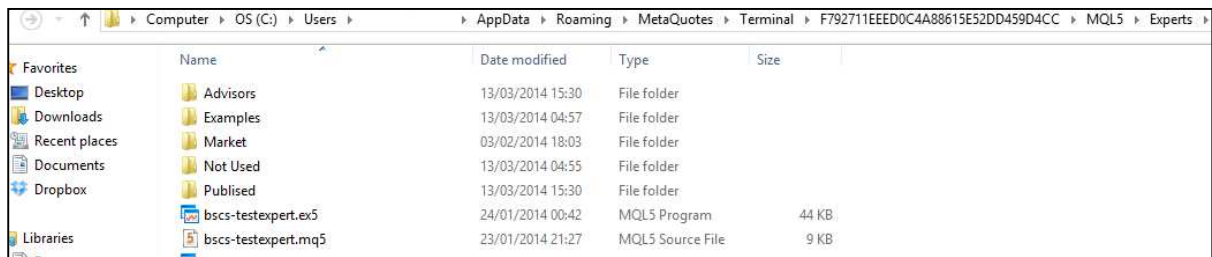
You need following two files:

- SenderMT5_EA.ex5 (Sender EA for your Meta Trader 5 terminal) – EA to send signal of your trade positions from your MT5 platform. (Note that the file name maybe slightly different to yours.)
- ReceiverMT4_EA.ex4 (Receiver EA for your Meta Trader 4 terminal) – EA to receive the signals from your MT5 platform. (Note that the file name might be slightly different to yours.)

Firstly place “SenderMT5_EA.ex5” file to your Expert advisor folder for your Meta Trader 5. I will show you the easiest way to find your expert advisor folder. Click any expert advisor on your “Navigator” and click “Modify” as shown in the screenshots below. Then you will open the Meta Editor for MQL 5. On the left part of the Meta Editor, click “Expert” folder and click “Open Folder”. The Meta Editor for MQL 5 will open your advisor folder. Simply copy and paste the “SenderMT5_EA.ex5” to your expert advisor folder anywhere. Once you have copied the EA, you need to restart your MT 5 platform to see “SenderMT5_EA EA” on your “Navigator”. You need to repeat exactly same steps to copy “ReceiverMT4_EA.ex4” files to your advisor folder in your Meta Trader 4 folder.



Screenshot: How to open your expert advisor folder

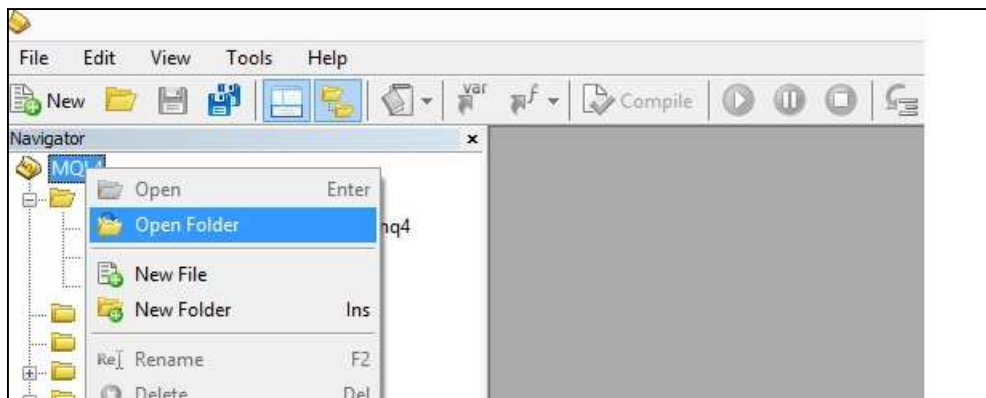


Screenshot: Your expert advisor folder in your Meta Trader 5 folder

To copy trades from your MT 5 to MT 4, you just need three steps to follow:

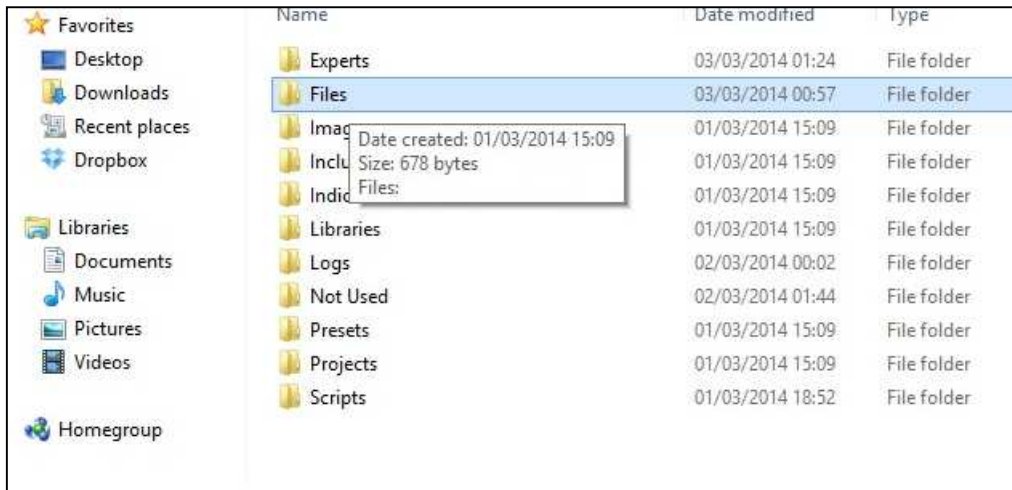
1. Get the terminal path address for your MT 4 file folder

Firstly you need to get terminal path for your MT 4 file folder. It is easy. Open your MQL 4 editor and select MQL 4 folder and open the folder as shown below.



Screenshot: Open your Meta Editor for your Meta Trader 4

Then open the “file” folder as shown below:

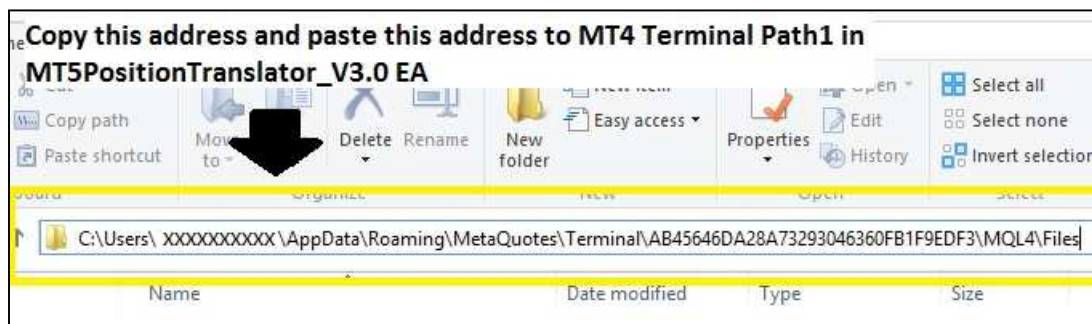


Screenshot: In your Expert Advisor folder, select “Files” folder in your MT 4 folder

Then left click on the address bar and you will get the address look like this:

C:\Users\XXX\AppData\Roaming\MetaQuotes\Terminal\AB45646DA28A73293046360FB1F9EDF3\MQL4\Files

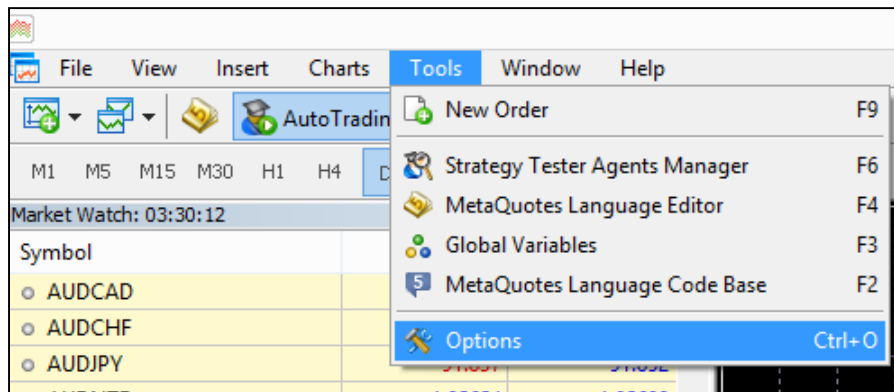
Copy your terminal path address in your notepad or somewhere similar for late use.



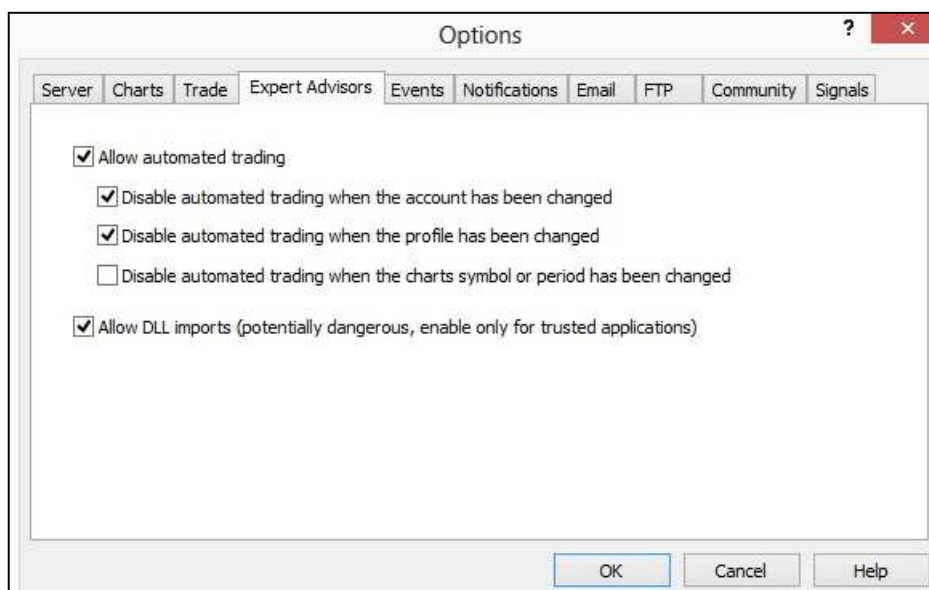
Screenshot: You need get the address for your files folder (just left click on the address bar)

2. Things to do for your Meta Trader 5 platform

Secondly make sure that you allow automated trading for your MT5 platform and also allow DLL imports for your MT 5. To do this, click on “Options” menu. Check on “Allow automated trading” and “Allow DLL imports”.

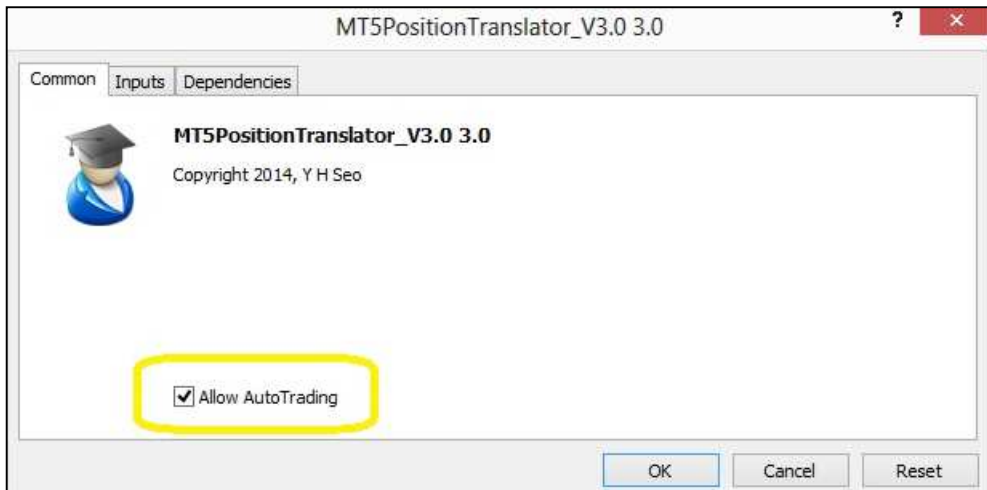


Screenshot: How to open “Options” menu in MT5 platform



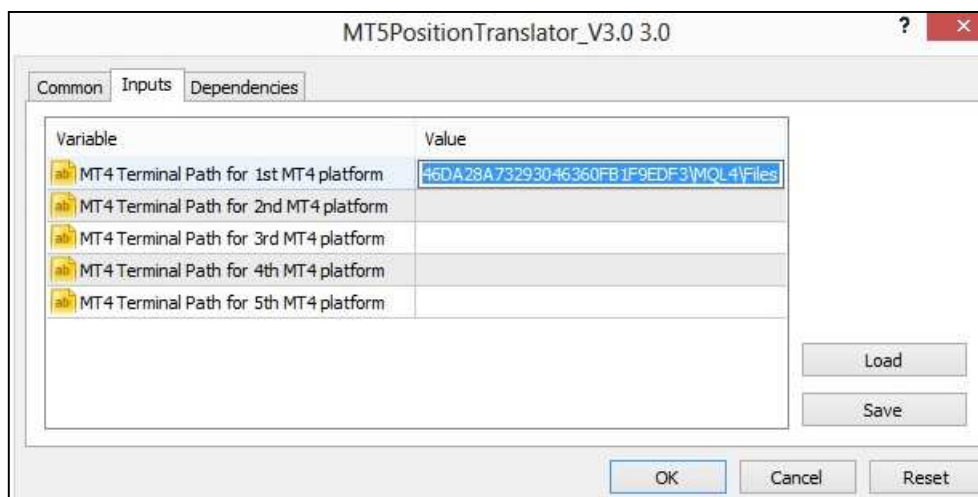
Screenshot: Check for “Allow automated trading” and “Allow DLL imports”

Then attach the EA “SenderMT5_EA” to the chart of most popular pairs such as EURUSD. Make sure that you allow auto trading for this EA as shown below.



Screenshot: Check “Allow AutoTrading”

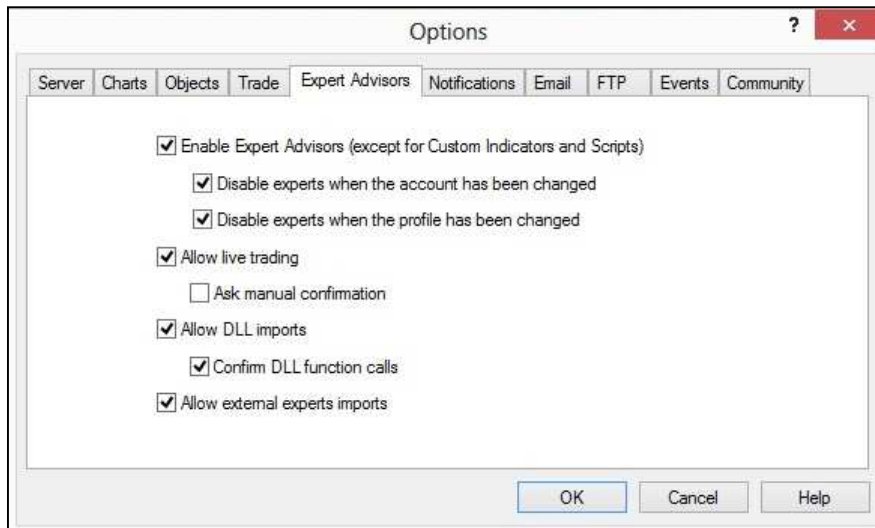
Copy and paste the MT 4 terminal path you copied from our previous step as shown below. Then click OK. Make sure the EA icon is not red.



Screenshot: Copy and paste the terminal path address to your inputs

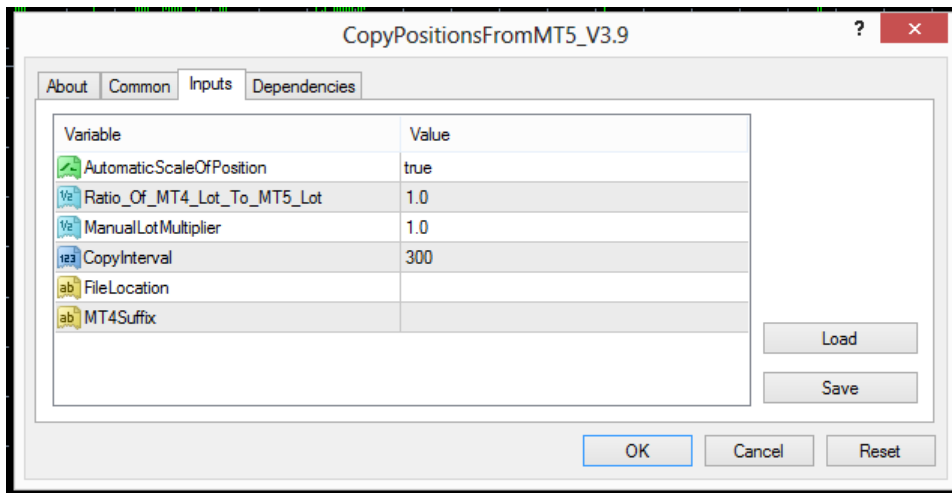
3. Things to do for your Meta Trader 4 platform

Thirdly make sure you allow auto trading in your MT 4 platform as shown below:



Screenshot: Check boxes to allow “auto live trading” and “DLL imports”

Then attach “ReceiverMT4_EA” EA to your MT 4 platform. Before attach “ReceiverMT4_EA” to your chart, you can choose to scale your MT 5 lot size either automatically or manually. If you set “AutomaticScaleOfPosition” = true, then the Trade Copier EA will scale your MT 5 lot size automatically according to your balance comparison between your MT 4 and MT 5 terminal. If you set “AutomaticScaleOfPosition” = false, then the Trade Copier EA will scale your MT 5 lot size using “ManualLotMultiplier” variable. ManualLotMultiplier = 1.0 means that the exactly same lot size from MT5 platform will be copied to your MT 4 platform. If you choose ManualLotMultiplier=2.0, then twice greater lot size will be copied to your MT 4 platform. FileLocation variable is used if the default installation guide still gives you error message like “5004” file opening errors. This error is happened because MT 5 EA can’t access to the shared folder used by MT 4 terminal. To resolve this problem, read our next section. If the default installation works fine then you just leave the FileLocation variable empty. “MT4Suffix” input is used if your MT 4 terminal uses Forex pairs with suffix such as “EURUSD.ecn” or “EURUSD.m”. Just type the suffix in this variable to make the trade copier work. (Note that you don’t have to worry about the suffix for MT 5 terminal at all.)



Screenshot: Inputs for “ReceiverMT4_EA” EA in your Meta Trader 4 platform

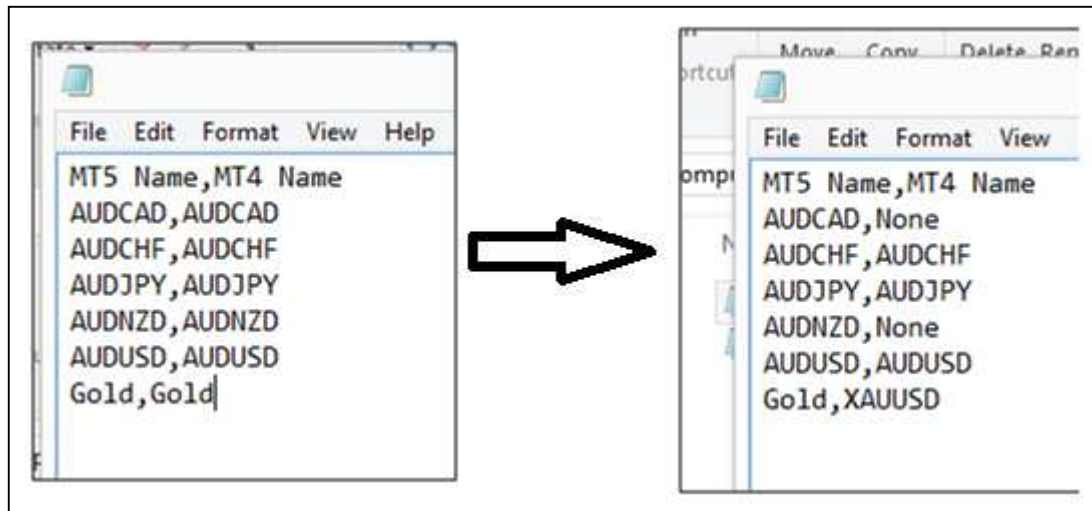
7. Trade Copier Variable for your Meta Trader 5 terminal (Important)

For MT5PositonTranslator EA (Sender EA) in your Meta Trader 5 platform,

1. Sender ID of this Meta Trader 5 terminal – Sender ID is a unique ID of each Meta Trader 5 terminal and any integer values can be assigned as Sender ID. This ID is used when you want to connect many Meta Trader 5 terminals to single Meta Trader 4 terminal. Default Sender ID is 0. If you want to connect single Meta Trader 5 terminal to single Meta trader 4 terminal, just use default value without any change.
2. MT4 Terminal Path for 1st MT4 platform – Copy and paste the first terminal path of your Meta Trader 4
3. MT4 Terminal Path for 2nd MT4 platform – Copy and paste the second terminal path of your Meta Trader 4 (Use this if you want to copy trades for your another Meta Trader 4 terminal.)
4. MT4 Terminal Path for 3rd MT5 platform – Copy and paste the third terminal path of your Meta Trader 4 (Use this if you want to copy trades for your another Meta Trader 4 terminal.)

5. MT4 Terminal Path for 4th MT5 platform – Copy and paste the fourth terminal path of your Meta Trader 4 (Use this if you want to copy trades for your another Meta Trader 4 terminal.)
6. MT4 Terminal Path for 5th MT5 platform – Copy and paste the fifth terminal path of your Meta Trader 4 (Use this if you want to copy trades for your another Meta Trader 4 terminal. Note that you can copy up to five different Meta Trader 4 terminals from the single Meta Trader 5 terminal.)
7. UseCustomMapping – This variable determines to use your own custom mapping file when this trader copier copy trades to your Meta Trader 4 terminal. The default custom mapping file is located in your terminal path of Meta Trader 5 platform. You can simply open this file in your note pad. Occasionally you can have the same symbols in your both MT 5 and MT 4 terminal but with different name. For example, your MT 5 broker may assign “Gold” for Gold/USD instrument but your MT 4 brokers may assign it XAUUSD for Gold/USD. In this case you can just change “Gold” into “XAUUSD” under MT 4 name column. Then the trade copier will copy of the position of “Gold” in your MT 5 to “XAUUSD” in your MT 4 terminal. This user custom mapping file can be also used to hide some specific currency symbols you don’t want to copy trades. For example, let’s say you don’t want to copy trades for AUDCAD and AUDNZD pairs in your Meta Trader 5 terminals as you believe AUDCAD and AUDNZD signals are not doing good job. Then simply just put “None” in the place of AUDCAD and AUDNZD pairs under MT 4 name column. As a default, this variable is set to false. Setting it false will do nothing and the trade copier will just perform normal operations. When setting is true, the trade copier will only take effects on the change in this custom mapping file. Also note that if you set this variable to false back from true, your custom mapping file will be rewritten with default settings. So once you changed this custom mapping file, it is better to save the file to somewhere safe in your hard drive. After you have made a change in your customer mapping file, you need to detach your Trader copier EA from your MT 5 chart and reattach them to take effects of this change. The trading symbols are sensitive to the capital letters. Therefore you need to be correct with each character. I mean you need to type the identical symbol name to your MT 4 broker specified in their MT 4 terminal. The symbols not shown in the custom mapping file will not be copied to your MT 4 terminal. Use of custom mapping is the advanced feature of this trade copier and it might be little complicated at the beginning. However in fact user custom mapping can really make the copying operations more efficient.

Name	Date modified	Type	Size
CustomUserMap.dat	06/05/2014 16:54	DAT File	1 KB
PositionsFromMT5.dat	06/05/2014 16:54	DAT File	2 KB



- Copy Forex, Gold, Silver only – This trade copier is meant to be used for Forex, Gold and Silver Symbols only. Therefore it is recommended to set this variable true. If you want to trade other symbols like index or other futures, then you need to set this variable false. You also need to check if the MT 5 symbols you want to copy is available in your MT 4 terminals too.

8. Trade Copier Variable for your Meta Trader 4 terminal (Important)

For CopyPositionFromMT 5 EA (Receiver EA) in your Meta Trader 4 platform,

- Connected Sender ID – The “Connected Sender ID” variable is corresponding to Sender ID variable in the Meta Trader 5 terminal. If you set ConnectedSenderId variable = 2, then the receiver EA will receive trades from the sender EA with Sender ID = 2. Again if you are connect single Meta Trader 5 terminal to single Meta Trader 4 terminal, then just use the default “0” value.

2. AutomaticScaleOfPosition - Automatic scaling of MT 5 lot size is done by comparing the balance in your MT 4 and MT 5 terminals. But you can still use "ManualLotMultiplier" variable to scale the MT 5 lot as you wish. Just set "AutomaticScaleOfPosition" = false, to use this manual scaling of MT 5 lot.
3. Ratio_Of_MT4_Lot_To_MT5_Lot - If you set "AutomaticScaleOfPosition"=true, then the Trade Copier will scale MT 5 lot size automatically using the balance in your MT 4 and MT 5 terminals. Use "Ratio_Of_MT4_Lot_To_MT5_Lot" variable to further increase your MT 4 lot size. When "AutomaticScaleOfPosition"=true, then your final Lot Multiplier is calculated using following formula:

$$\text{Lot Multiplier} = (\text{MT 4 balance} / \text{MT 5 balance}) * \text{Ratio_Of_MT4_Lot_To_MT5_Lot}.$$
4. ManualLotMultiplier - If you set "AutomaticScaleOfPosition"=false, ManualLotMultiplier will be effective. Your lot size in your MT 4 terminal will be calculated simply by multiplying ManualLotMultiplier to your MT 5 lot size.
5. ReversePosition – If you set ReversePosition = true, then Buy in MT 5 will become Sell in MT 4 and Sell in MT 5 will become Buy in MT 4. As a default, ReversePosition is set to false. Most of time you will use this default mode.
6. CopyInterval – Copy interval in milli seconds. (1000 ms = 1 sec)
7. FileLocation – Alternative file Path location if default terminal path setting does not work.
8. MT4Suffix – if your MT 4 broker have suffix like .ECN or .m, etc, then just add suffix to here. You can also do the same thing by changing in symbol name in the custom mapping files.
9. EAMagic – Order Magic number for your copied positions. Use default if possible.
10. EAComment – Order Comment for your copied positions. In the default setting this is empty. If this is empty, the EA will create own EA comment like this "MT 5" + your MT 5 login ID. This was added to allow you trace from which MT 5 terminal the positions were copied from. Use default if possible.

11. Number of Characters in MT5 Symbol without suffix- Default setting for this variable is 6. As most of Forex and Gold and Silver symbols are 6 character symbols without suffix. If you want to trade 9 character symbol then you need to change this to 9.

9. How to connect many Meta Trader 5 terminals to single Meta Trader 4 terminal

Connecting many Meta Trader 5 terminals to single Meta Trader 4 terminal is relatively new feature in this Speedpro Trade Copier. Here we briefly explain how to connect many MT 5 terminals to single MT 4 terminal. Firstly, user needs to set different Sender ID to each Sender EA (MT5PositionTranslator EA) in your Meta Trader 5 terminal. Note that you can only attach one sender EA to single Meta trader 5 terminal. For example, to connect three Meta Trader 5 terminals to single Meta Trader 4 terminal, you need to set Sender ID 0 to your first Sender EA in your first MT 5 terminal and set Sender ID 1 to your second Sender EA in you second MT 5 terminal and so on. Important note here is that the Sender ID for each Sender EA must be different and unique. If you repeat Sender ID then the Receiver EA will be confused and the Receiver EA will be terminated automatically for safety reason. While attaching each Sender EA, as usual, you are expected to copy and paste the terminal path of your Meta Trader 4 terminal. Once your settings for Sender EAs are completed, you need to open three charts in your Meta Trader 4 terminal. Note that each Meta Trader 5 terminal will be connected to the Receiver EA on each chart. Each Receiver EA should have corresponding value for "Connected Sender ID" variable. For example, your first Receiver EA should have 0 for "Connected Sender ID" and second Receiver EA should have 1 for "Connected Sender ID". Again if you repeat this "Connected Sender ID" among your Receiver EA, then the Receiver EA will stop operating. Once settings of Receiver EAs are completed, your Meta Trader 4 terminal should start to copy trades from each Meta Trader 5 terminal.

10. How to get the live account version of this Speedpro Trade Copier

Getting unlimited live account is straightforward. Simply you can drop us email on FinancialEngineerPro21@gmail.com. After we process your payment and your details, we can send you the live account version straight away.

11. Few tips to make the MT5 to MT4 Trade Copier to copy trades faster

To make the Speedpro MT 5 to MT 4 trade copier to copy the trades better and faster, you should follow the tips below:

1. Keep the currency pairs you want to trade on the Market Watch only if possible. Smaller number of currency pair in the Market Watch in MT5 and MT4, the trade copier will be copying the trades faster. Alternatively you can set `UseCustomMapping = true`, then you can remove all unwanted symbols in the custom user mapping file. This way you can keep your Market Watch setting as they are. For example, if you
2. It is better not to copy trades from Non Forex symbols except Gold and Silver in your market watch. To copy trade from other symbols like index and futures will be less supportive with this Trade Copier. However if you really want to trade these symbols, you can still trade these symbols with this trade copier. In this case, set `Copy Forex, Gold and Silver only = false`, then also make sure you set "Number Of Characters In MT5 Symbol without suffix" variable greater value to adapt the index or future symbols you want to copy. For example, if you want to copy `#NKDMLLP4` index in your MT 5, then firstly you must check if you have this symbols available in your MT 4 terminal. If they are available, then you need to set "Number of Characters in MT5 Symbol without suffix" = 9 to adapt this 9 character symbols.
3. Decide how you want to scale your MT 5 lot size for your MT 4 lot size (i.e. automatically or manually?)
4. Always attach the MT5 expert advisor first and then attach the MT4 expert advisor.
5. If you get errors or problem with this trade copier, it is often best to remove the Trade Copier EA and reattach the Trade Copier for fresh start up for both your MT 4 and MT 5 terminals. Especially when you change any variables for this Trade Copier or when you change some symbols names in your custom user mapping file, you must detach the trade copier from your chart and then reattach them to chart.
6. The trade copier was tested for the live account of mine as well as other customers. Therefore it should work without any problem once they start to work in your MT5 terminal.
7. Check your Expert tabs and Journal tabs if any errors happen and report to author.
8. Once you get familiar with custom user mapping file, it may be straight forward to use th

12. Trouble Shooting

These are potential source of errors. I identified the sources of errors here for the convenience of users:

[Trouble 1] Your PC Operating systems (i.e. Window 8 or 7) do not allow the MT 5 terminal to access to the shared folder of MT 4 terminal. This is the common problem for other existing software built for Window 8 and 7 currently.

[Trouble 2] Your MT 4 or MT 5 terminal may have non Forex pairs such as “#IBM” or “#NKDM4” or “UJVolume”. This can be checked in your market watch. As you see from the picture below, #NKDM4 is not a standard Forex pairs. This will cause the problem for the trade copier sometimes. However Gold and Silver symbols are supported to copy trades from version 5.8.



Symbol	Bid	Ask
XAUEUR	941.34	942.54
XAGUSD	19.80	19.88
XAGEUR	14.39	14.47
XPTUSD	1407.11	1412.11
XPDUSD	772.60	776.60
#NKDM4		
#ESM4		
#YMM4	16239	16242
#NQM4	3563.25	3564.25
#FFIM4	6544.5	6546.0
#EXM4	3099	3102
#FSMIM4	8239	8245
#FDXM4	9592.0	9595.5
#APM4	5358	5378

[Trouble 3] The Forex pairs with suffix such as “EURUSD.ecn” will cause trouble for trade copier too. You can trade with Forex pairs with suffix such as “EURUSD.ecn” or “EURUSD.m”, etc in your MT 4 terminal. Note that the Forex pairs with suffix in MT 5 terminal do not cause any problem. Therefore you don’t have to do anything for the Forex pairs with suffix in your MT 5 terminal.

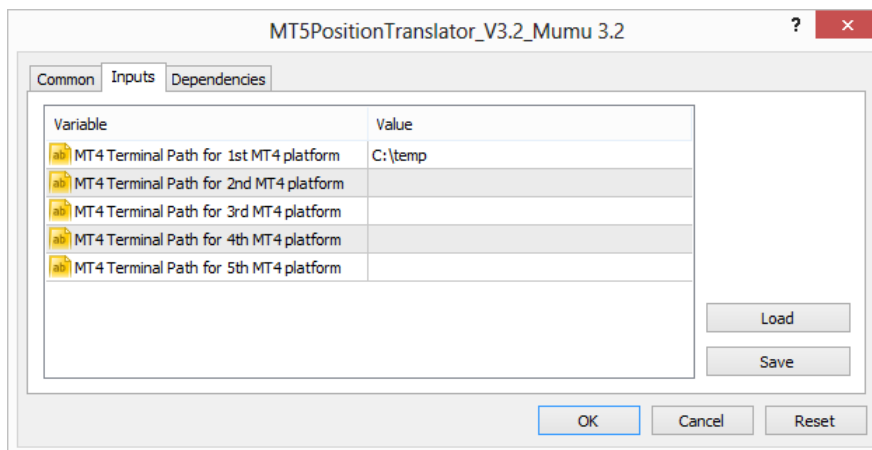
[Trouble 4] Your MT 4 log file might become too large for writing “5004” file opening errors” too frequently. This is very rare events and this happens because the trade copier does not function

correctly before. However once the Trade copier work correctly then your MT4 log file will not grow. Also delete the large log file from your MT 4 terminal and they are located in your MQL 4 folder in your terminal path. New log file will be created by MT 4 terminal.

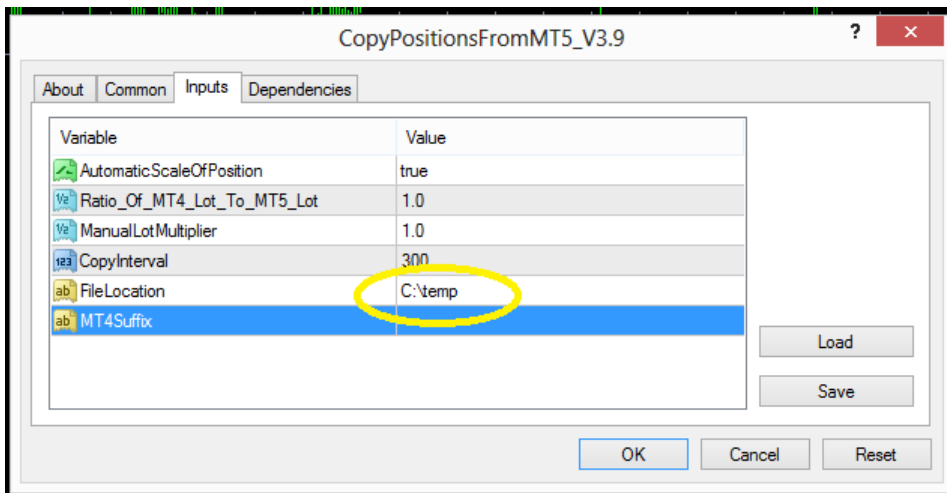
Solution to Trouble 1

Trouble 1 is happening because MT 5 EA can't access to shared folder (known as UAC) which is used by your MT4 terminal. This strict restriction is often troublesome for many commercial software. In this case we have to avoid the direct access of MT 5 EA to the shared folder of MT 4. To avoid the direct access, follow these steps:

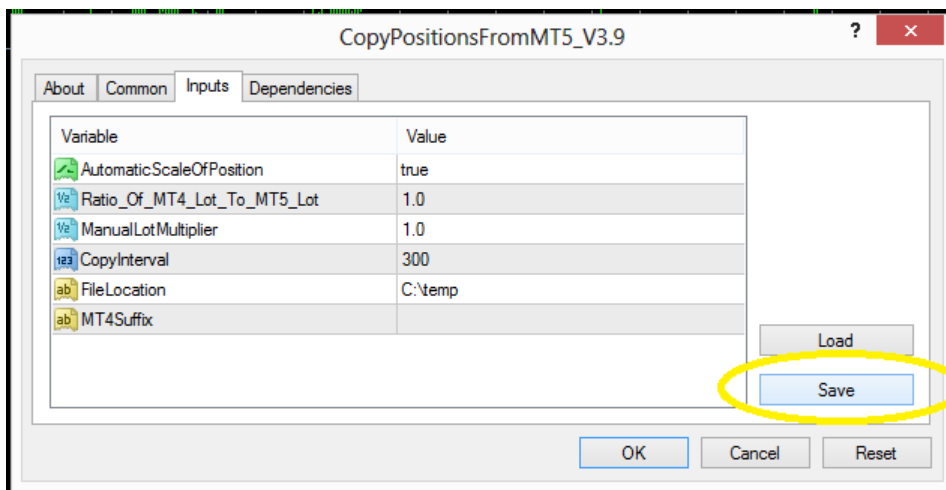
1. Create any folder in your hard drive such as "C:\temp" or whatever (but do not use the root drive "C:\" as you can't write anything on the root drive for some Operating system.)
2. Copy and paste this address ""C:\temp" to your MT 5 EA

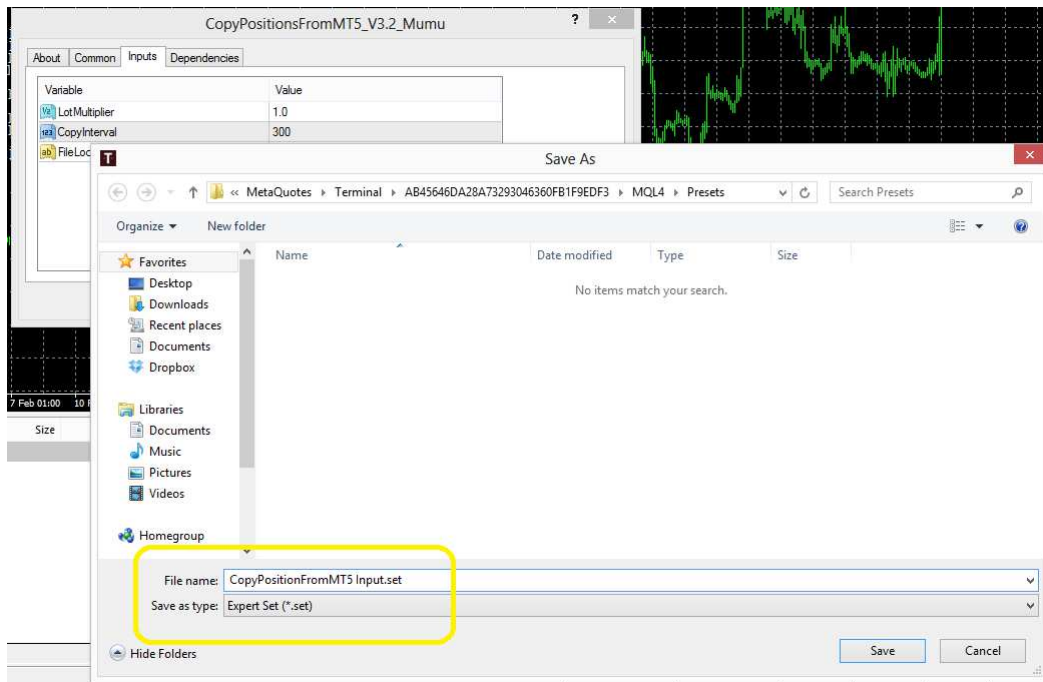


3. Copy and paste the same address "C:\temp" to the FileLocation in your MT 4 EA.



4. As the MT 4 terminal get lost values for input variables sometimes, it is better to save those values somewhere safer. So you can use them later. So click “Save” button and give some name to the .set file and save them.





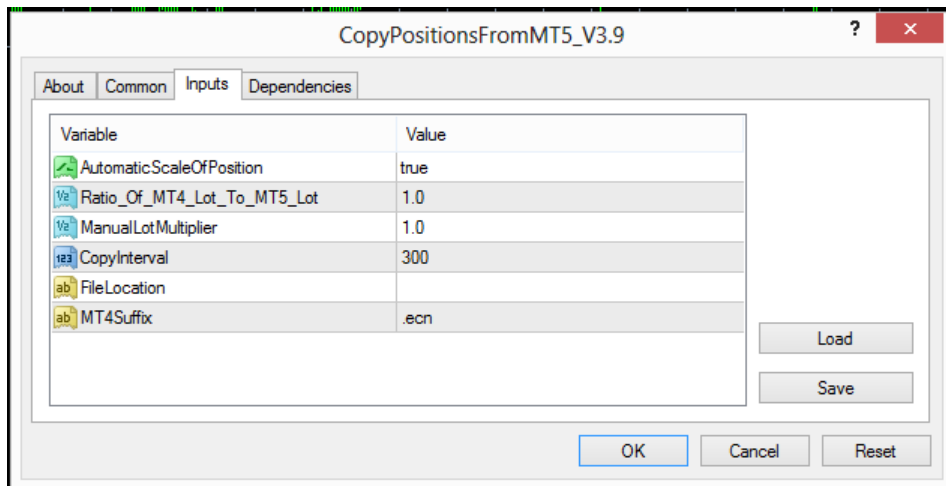
Plus: This should 3 step should resolve the problem. In addition quite often you might resolve any errors when you restart your MT4 and MT5 terminals or reattach the MT5 and MT4 EAs on new charts. If these steps do not resolve the problem, then please contact me for further communication.

Solution to Trouble 2

Solution for Trouble 2 is simple. Just hide all this non Forex pairs in your Market watch by “Hide All” option. Then keep the Forex pairs you want to trade in real live account only.

Solution to Trouble 3

To trade with Forex fair with suffix, check what suffix your MT4 terminal. For example, for EURUSD.ecn, the suffix is “.ecn”. Write this suffix to the MT4 Suffix input variable in the ReceiverMT4_EA EA as shown in the picture below. However before you type this suffix in your MT 4 Trade Copier, please try to use this Trade Copier without suffix first. Sometimes, the Trade Copier works without suffix.



Important Trading and Investment Disclaimer

Trading and Investment in Financial Market involves the risk of loss. Please consider carefully whether trading and investment in the Financial market are appropriate to your financial situation. Only risk capital should be used when trading and investing. Investors and Traders could lose more than their initial investment. You must agree that you have sufficient knowledge and experience in Forex market before you use any of our Price Action and Pattern Trading Software Package as well as other EAs provided by us. Past results are not necessarily indicative of future results. The risk of loss in trading can be substantial, carefully consider the inherent risks of such an investment in light of your financial condition. You should be aware of all the risks associated with foreign exchange trading and If necessary, please seek advice from an independent financial advisor if you have any doubts about Forex market and trading in Forex market. If you receive executable files for our software and expert advisors and installed on your PC or laptop, then refund is not available.