

# FOREX LASER SCALPER

## *For the USD/JPY*

The Forex Laser Scalper, for the M1 timeframe, on Metatrader 4, is arguably the world's greatest buy/sell forex indicator. First and foremost, you can be assured, that once the arrows appear (at the close of the candle), they always stick. There is NO repainting.

**INSTALLATION INSTRUCTIONS:** Unzip the forexlaserscalper.rar package, and copy & paste the file: forex\_laser\_scalper.ex4 to your Metatrader's Indicator folder. Then copy & paste the file forex\_laser\_scalper.tpl into your Metatrader's Template folder. Then restart your MT4 platform.

These are the kinds of signals you'll be seeing. Things of sheer beauty...

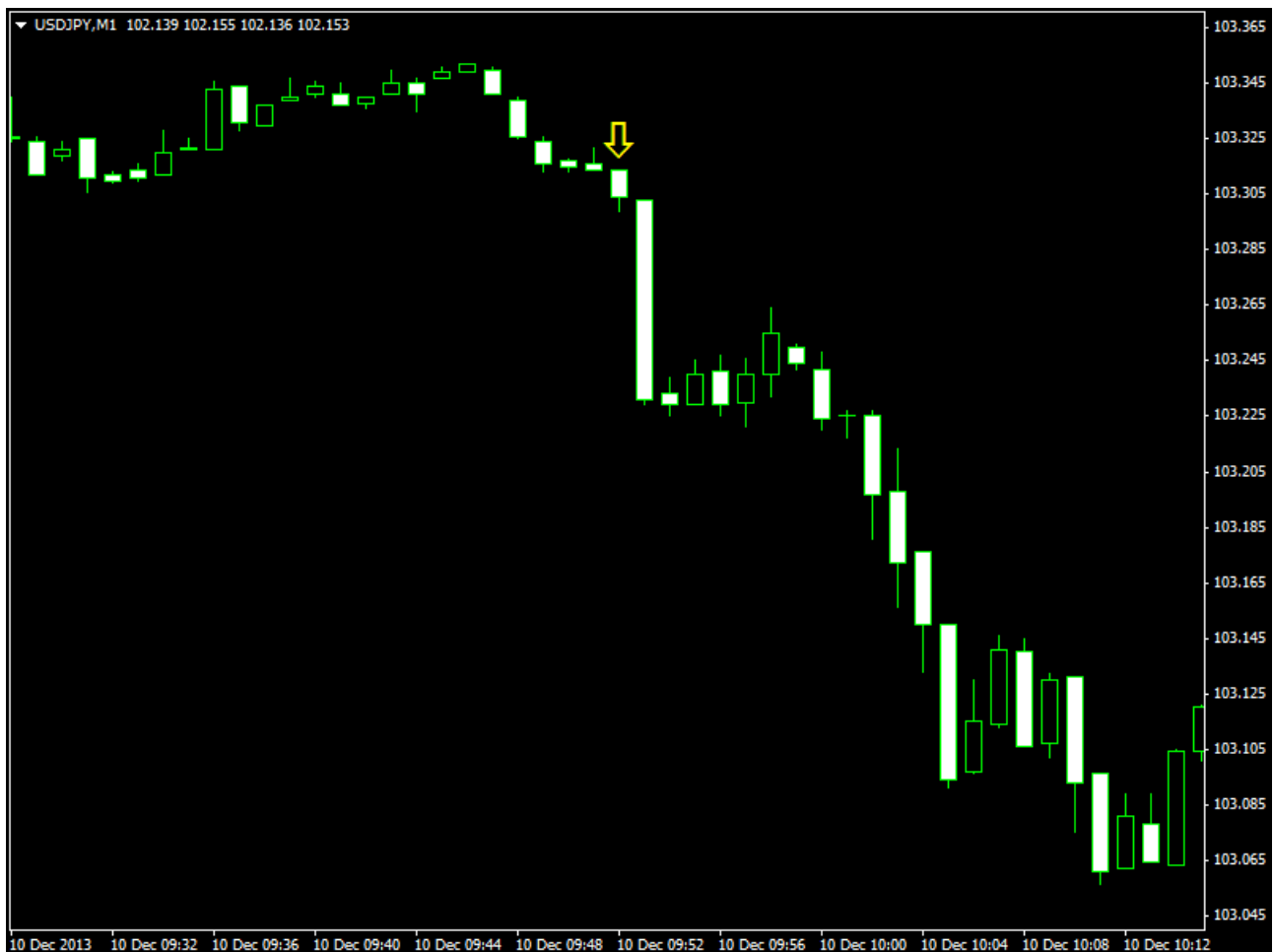




**ENTRY RULES:** Simple, enter as soon as you see an arrow appear on your chart. Arrows appear at the close of the candle.

**STOP LOSS RULES:** Place your stop, 1 pip above/below the recent swing high/swing low. If there is an obvious support or resistance that you can see clearly on the chart, then use that as your stop.

**TAKE PROFIT RULES:** There's no hard and fast rules for the TP. Frankly everyone has different methods of exiting their profits. Some may close half their trade after a certain amount of pips and then let the profits ride, others may want a fixed TP. Any single ideology is not. Rather, you are welcome to focus on your own exit strategies, whether it be fibs, pivots, support/resistance, moving averages, bollinger bands, etc...



**EXCEPTIONS:** Do not trade during major news releases.

**SUGGESTIONS:** It is preferable to use a broker that has a timezone of GMT+3 (during Daylight Savings Time), and GMT+2 (outside of Daylights Savings Time). Then you don't need to fiddle with the offset. You can use a demo account at FXDD, as they are on the correct timezone all the time, (then you can place the actual trades on your live broker of course, however it is suggested that you demo with this for some time before going live, so as to get a feel for it). You can download the platform from here:

<http://files.metaquotes.net/fxdd/mt4...alta4setup.exe>

However, if you are using a broker with a different timezone, for example, lets say your broker is on a timezone of GMT all year round. Then, outside of DST, you would need to place -2 in the indicator's offset settings. And during DST you would change that to -3. **Make sure your offset is correct, otherwise the arrows will be in the wrong place!**

**Here is a chart of what offset you need to place in the indicator options:**

| Your broker's timezone | Indicator's Offset (outside DST) | Indicator's Offset (during DST) |
|------------------------|----------------------------------|---------------------------------|
| GMT -11                | -13                              | -14                             |
| GMT -10                | -12                              | -13                             |
| GMT -9                 | -11                              | -12                             |
| GMT -8                 | -10                              | -11                             |
| GMT -7                 | -9                               | -10                             |
| GMT -6                 | -8                               | -9                              |
| GMT -5                 | -7                               | -8                              |
| GMT -4                 | -6                               | -7                              |
| GMT -3                 | -5                               | -6                              |
| GMT -2                 | -4                               | -5                              |
| GMT -1                 | -3                               | -4                              |
| GMT                    | -2                               | -3                              |
| GMT +1                 | -1                               | -2                              |
| GMT +2                 | 0                                | -1                              |
| GMT +3                 | +1                               | 0                               |
| GMT +4                 | +2                               | +1                              |
| GMT +5                 | +3                               | +2                              |
| GMT +6                 | +4                               | +3                              |
| GMT +7                 | +5                               | +4                              |
| GMT +8                 | +6                               | +5                              |
| GMT +9                 | +7                               | +6                              |
| GMT +10                | +8                               | +7                              |
| GMT +11                | +9                               | +8                              |

---

If you attach the indicator to your M1 USD/JPY chart, and manually scroll back to see the previous few months' trades, you'll understand the accuracy and frequency of the system, because remember – these arrows do not repaint, what you see is what actually happened in real-time.

**ADVICE:** Please before attaching the indicator, keep hold of the "Home" button when you open the USD/JPY M1 chart on MT4, until you have reached the maximum amount of candles available on your broker, otherwise you might get some funny arrows here and there. So make sure you attach the indicator AFTER you have loaded all M1 historical data.

**NOTE:** Some people may have trouble seeing the arrows: If so, please try the following:

1. After you've installed the indicator, take the template (included in the RAR package), apply it in MT4. To do this, just copy the TPL file into your "\\Program Files\\Metatrader\_Broker\\Templates" folder, restart Metatrader, open a USD/JPY M1 chart, right-click on the chart, then click on "Template", and then on forex\_laser\_scalper.
2. Make sure your arrows are **THICK LINES**, e.g. a thickness of 4. If they are a thickness of 1, then they're barely visible.
3. You'll need to TICK "Allow DLL imports" when attaching the indicator to your chart.
4. Even though the indicator supports suffixes / extensions, such as USDJPYm or USDJPY.x, this might be causing an issue for you. If so, please try a broker where the symbol of your pair is purely USDJPY, i.e. without any extensions.

Because of the accurate nature of the system, then you're not going to get many trades. Generally speaking, there's at least a signal a day. Whilst that may not seem like a lot, the advantage of this system is that the signals are pretty powerful. Some days you may get a couple of signals, other days you might not get any. **Patience is key.** The indicator supports alerts, so you can ramp up your speakers if you're not sitting at the computer. It also supports email notifications, you'll have to go into MT4 --> Tools --> Options --> Email, to apply the settings (such as your email username/password).

**ENJOY:** Absolutely. Enjoy using the Forex Laser Scalper – you'll see time and time again, it truly is the world's greatest scalping buy/sell arrow indicator.

If you have any questions, please don't hesitate to email: support [at] forexlaserscalper.com

**FINAL POINT: PLEASE ALWAYS USE THE LATEST VERSION OF THE FOREX LASER SCALPER. IF YOU HAVE AN OLD VERSION OF THE INDICATOR, PLEASE DISCARD IT AND START USING THE LATEST VERSION. PREVIOUS VERSIONS ARE NOT SUPPORTED.**

**The latest version can always be downloaded from our forum, so please check the site regularly for any updates...**

[ForexLaserScalper.com](http://ForexLaserScalper.com)