

CyberiaTrader Professional

User Management

V 2.2
(English)

Moscow 2006

License Agreement

The present license agreement regulates the relationship between Cyberia Decisions (company) and the client/user (client) of the automated commercial system, CyberiaTrader Professional (system). The client assumes the responsibilities and requirements of this agreement with use of the automated commercial system, CyberiaTrader Professional.

General Conditions

The object of this agreement is the automated commercial system, CyberiaTrader Professional. The client recognizes the risks associated with working in financial markets. Cyberia Decisions does not bear direct or indirect responsibility in connection with the risks of the client.

Relationship

The agreement between Cyberia Decisions and the client begin with the acquisition by the client of the automated commercial system CyberiaTrader Professional.

Client is allowed to

- Use the system within the limitations and conditions of the license agreement
- Acquire any revised versions of the system—taking into account the time Cyberia Decisions takes to develop and upgrade the system.
- Participate in the development of revised systems.
- Submit suggestions for the improvement of the system.

Client not allowed to

- Sell, resell, or transfer any commercial version of this system without consent from Cyberia Decisions.

Company can

- Include new functionality without notice.
- Include, in the commercial version of this system, any new functionality developed by the users of the open version of the system and/or with the open publication of the commercial system.
- Terminate the relationship with the client due to incorrect actions of the client in regards to the systems and equipment of the company and/or the client's non-compliance of the conditions of the present agreement.

Company cannot

- Falsify or modify in any way the client's results and profits from the use of the system.

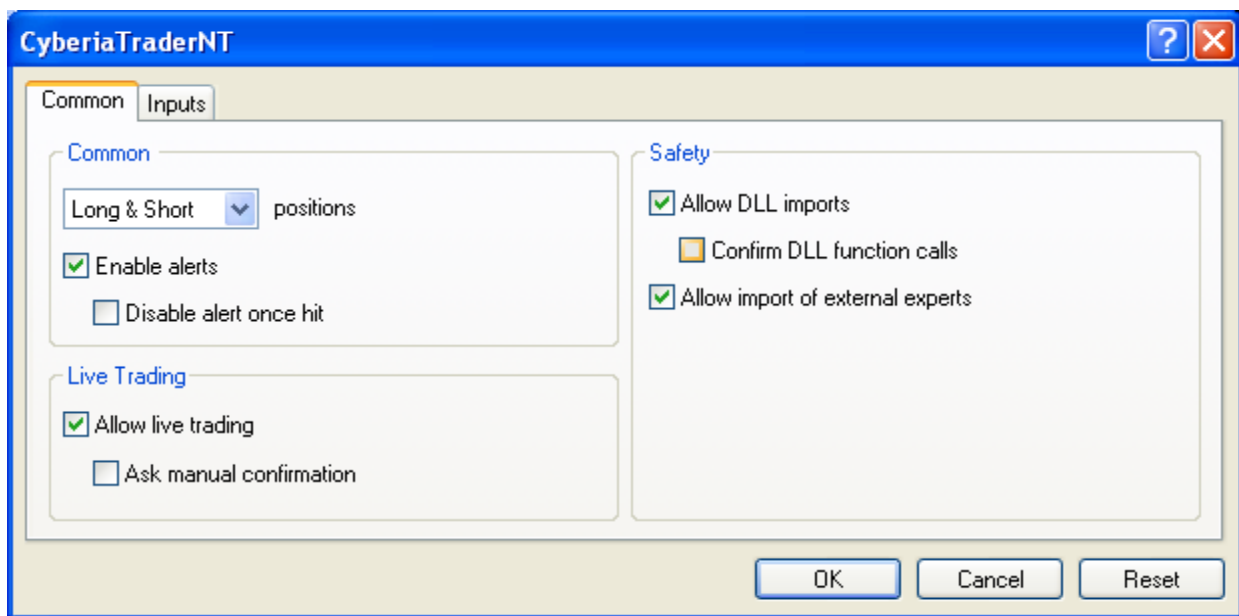
The provisions of the present agreement are subject to the unconditional observance by all parties.

Introduction

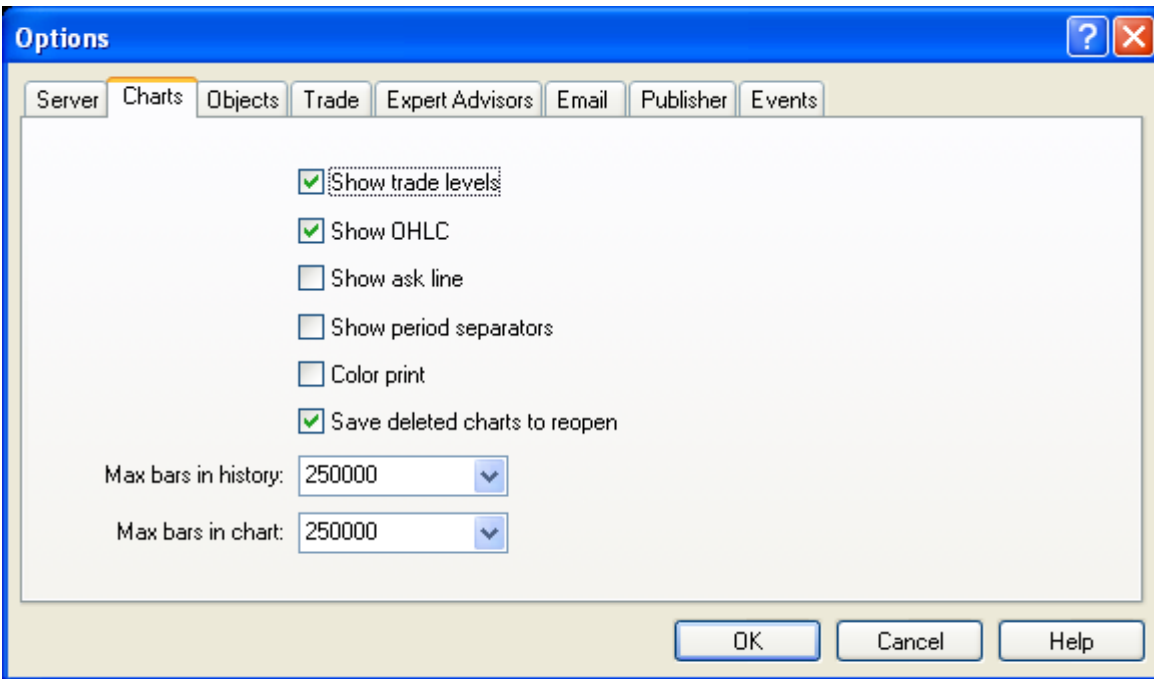
The CyberiaTrader System is the result of scientific studies of the foreign exchange (FOREX) market and available resources. The system continues to be improved for the purpose of reaching maximum positive results as a tool in the FOREX market. This system is developed for the commercial platform MetaTrader 4. Before using this application, as with any system, become acquainted with the management of tools and user interface.

Set up

Client must independently establish a connection to a Forex broker using the MetaTrader4 terminal. In the connection setup, the client must enable options in the Expert Advisor, check “Allow live trading”, and clear “Ask manual confirmation” as shown below.



Before beginning use must modify the MT4 “Charts” options in order to provide the system with enough data and allow for optimal performance. In the MT4 terminal go to Tools>Options>Charts tab. Locate “Max bars in history” and change to 250000, then below change the “Max bars in chart” to 250000 as well as shown below.



Market settings

The client must select the Experts settings that will be used with the system. Cyberia Decisions recommends using these tools on currency pairs with minimum spreads.

If using to trade pairs with higher spreads (more than 2 pips) it is necessary to modify the operation of the system. For use on currency pairs that hold the recommended spreads, the system should be run on a one minute chart, since this determines the calculation of the system. Do not switch time frames while the system is running. For manual currency pair analysis, view a chart of the same currency on a different time interval, in a new chart in MT4 of the same symbol and DO NOT connect the system.

Description of system parameters

ExitMarket = false – Exit from the market. The Expert, as possible and as needed, will close all open trades and cease all work. Setting this to True enables the function.

ShowSuitablePeriod = false – To show the decisions in regards to the time interval in the EA journal, which shows the variation in motion. Setting this to True enables the function.

ShowMarketInfo = false – To show detailed information about the systems market information collected in the journal of MT4. If the system is not trading, check the value of the ModeTradeAllowed parameter. If the value = of 0 returned, broker does not allow the use of custom code for trading. In other words, find a new broker. Setting this to True enables the function.

ShowAccountStatus = false – Shows information about the client account and standings.

ShowStat = false – Shows the statistics of the system (numerical probabilities of market trend or other directional information). It makes it possible to evaluate the quality of decisions being made by the system. Setting this to True enables the function.

ShowDecision = false - Shows decisions made by the system. Setting this to True enables the function.

ShowDirection = false – Shows the the direction of trade decisions made by the system. Setting this to True enables the function.

BlockSell = false – Blocks or allows sell signals from being traded. This tool is used for blocking Short trades and can be used when the market trend is known. Setting this to True enables the function and disallows Short positions to be opened. It is used to control the operation of the system at the moment of entrance into a market trade. It is necessary to open this parameter to place Short positions and allow the automation of these trades.

BlockBuy = false – Works same as previous parameter except for buy signals.

ShowLots = false – Shows the calculated quantity of lots used in the platform taking into account risk, and flow of market- it is size and quantity of lots using calculated data. This setting will show the lot decisions in the EA journal. Setting this to True enables the function.

BlockStopLoss = false – to block or allow the use of stop losses. The parameter is used together with the the ShadowStopLoss with brokers abuse their knowledge of client stop losses and knock you out of trades as they go for your stop losses. The use of the parameter is dangerous in the case of the breaks of the connection of commercial terminal as there will be no stop loss set on the trade with your broker, the stop loss is held in the systems memory. Setting this to True enables the function.

DisableShadowStopLoss = true – to include a shadow stop loss. It is used with the blocked stop loss for the start of the function of ShadowStopLoss. In the case of applying this stop loss function in the transaction it will not be sent to the broker, but it is stored in the systems memory. When reaching the recorded stop loss the system will send close order to the broker. The system of the DisableShadowStopLoss is insensitive to market noise and makes it possible to avoid the spontaneous movements of the market during unsuccessful closing of transactions. Setting this to false allows shadowstoploss

EnableLogicTrading = true – to include logical trade technology. This parameter is included in the main commercial system, which is used for the regular system use. The parameter must be disconnected only in the case of explicit flat conditions of the market. In the recommended periods of silence (M1) the system uses the pipsing technology. In the periods higher M5 system places longer transactions. Trading during news releases is not recommended because of the low effectiveness, which decreases risk. Setting this to True enables the function.

BlockPipsator = true – blocks the pipsator technology from working. Use this option if the broker uses a pipsator filter, which blocks the effectiveness of pipsator technology. Brokers using pipsator filters puts the trades in their favor. Blocking pipsator allows for larger trades in scalping but less trades throughout the day which usually has best results. Allowing pipsing with lessen the results of scalped trades.

SlipPage = 1 – this parameter governs the slippage rate of market. Increase this value to 3 in the case of volatile markets. If using ShadowStopLoss the parameter must be increased to the maximum in order to ensure instant close of unsuccessful trades with minimum loss.

SymbolsCount = 1 – quantity of simultaneous instances of CyberiaTrader on currency pairs. If you are trading more than one pair this option must be the same on all pairs.

Risk = 0.5 – the risk to benefit ratio, which sets maximum risk for EA to run. This parameter must be identical for all simultaneously running pairs with this system. With just sufficient account size this parameter must not exceed value of .1 With increased account size increase the value of this parameter for the larger profit (and larger losses). Decrease risk if you are paying higher spreads.

StopLevel – is picked by when using ShadowStopLoss. This parameter is manually entered level of stop losses in case the software fails to enter for some reason. The parameter does not have a value on zero. If the value of the parameter is absent, ShadowStopLoss will not operate and you will possibly endure losses. Establish the value of this parameter in the case of applying ShadowStopLoss.

StopLossIndex = 4 – the value of automatic stop loss. System automatically calculates the value of spreads and in accordance with market activity during the period being used. This parameter is optimized for each currency pair on MetaTrader for Long orders only. On the statistics once a week check status of trades and adjust this parameter as needed in current instances. The value Range is 1 to 5 with 0.1 possible increments. We do not recommend the use of dynamic stop loss technology except in regular auto trading. It is dangerous the use of dynamic stop loss in automatic trades during the output of economic news. The use of automatic stop loss increases the profitability of this system during regular auto trading, but if used during news can result in large losses as the automatic stop loss is set with incorrect data. We recommend the using a static stop loss in all cases with the regular trade, since it limits possible losses.

StaticStopLoss = 20 – establishes the value of the static stop-loss in the trade. In this case, if the parameter has a value of 0, static stop-loss automatically disconnects dynamic and vice versa (if value of 0 is included static at stop-loss).

TimeTradeHoursDisabled – the parameter is intended for the shutting down the system during the specified time of day (usually GMT). Hours are entered consecutively with any separator, for example "02, 09, 17, 22". As the values are indicated the hours, returned by broker on the EA. For example the value of "22" indicates blocking system functionality from 22-00 to 23-00. Set the hour displacement before deploying this system in MT4. Before the output of critical news disconnect the system (minimum 1 hour) prior to the output of critical news in order to deactivate system in this dangerous period. Note: in the professional version you will not see the description of many parameters of tuning, which is present in the open

version of the system for manual tuning. Professional version automatically tunes the absent parameters and has the original braking system of incorrect trades, not allowing manual tuning. Forming part of system neurotechnologies also being self-adjusted and do not require tuning.

Tuning the system

One of the most important steps in using system - tuning its parameters. Professional version does not require the optimization for most parameters. The key parameter - StaticStopLoss (in the case of applying the static level pips -loss, that we we recommend), or dynamic of the pips -loss (StopLossIndex - which establishes the degree of distrust to the calculated value of pips -loss in accordance with the movement of the market). Dynamic of pips -loss is more effective, but use it only with your analysis of the currency pair (we we recommend in any event to establish the trend of the market and review news calendar in order to avoid using the system at the moment of output of critical news). Before beginning work produce the optimization of the following parameters:

StaticStopLoss – the configurable stop loss band uses 6-20 on M1, 20-50 on M5 with increments of 1 (if you decide to work with static stop loss).

StopLossIndex - configurable range is 1-5, increments of 0.1 (if you decide to work with dynamic stop loss)

Optimization you produce from allowing pipsing (BlockPipsator = false) switched off by technology. Optimizethetesting simulation by using each tick with the smallest accessible periods interpolation of each tick. The period of live trading must correspond to the period which customized to run on.

Optimization you produce to statistics not less than 2 months.

At the end of optimization user must be trained in the application this system and review the calculation for not less than one-two week.

Note: pipsator in the course of optimization testing on MetaTrader 4 false results because of the incorrect translation of ticks with the momentum motion that vary from live quotations).

Strategies of conducting trade

Cyberia Decisions recommends to use the following principles in conducting trades: enter into the market during a period free of the output of news which creates a risky base for conducting trades using moderately aggressive operating cycles for trading formulas. In the event of execution during highly volatile market (50 points within a session for example), turn off system to the end of aggressive trades in your currency pairs. On the intensively changing tools try not to use MTS - combine manual and mechanical trade. Try to use MT4 during markets in the state of moderate chaos (flat market) and low activity of the markets compulsorily actions and prepare your own operating schedule each day. Do not use the system during the output of critical news. During the weekends you regularly modify the settings of the system to optimize, if necessary. Do not interfere with the work of system

without bases, this will reduce the effect of the system. You must establish your threshold for losses before deployment to allow system to make correct calculation based on your customized settings. This settings helps the system determine an entrance point on the during live trading. (you should test your settings on back test to determine the best setting for you before deploying the system.)

Control aggressiveness and risk of the system

System works in any periods with any currencies. Before the application of a system select the optimum settings on the basis of the possibilities and risk of the current day. In larger periods the system acts less aggressively than in short periods, at the same time increases the reliability of analysis. Accordingly, in the short periods situation is opposite - very aggressive and less reliability in systems analysis.

Note on the use of pipsator:

Not all brokers make it possible to use pipsatory function. Some brokers establish constraints, which oppose our technology of conducting trades. Pipsator should only be used flat markets. Do not use pipsator tools when the currency spread is more than two pips.

General note :

This system is not the FOREX grail and it is not a full-automation tool. Always establish the day trend for maximal effectiveness system and disconnect before the output of critical news having closed all active trades, in profitability if possible!

We wish you successes in your trades and maximum profit!

Cyberia Decisions team.