

ORAC LUM

EXPERT ADVICOR

INVESTOR'S HANDBOOK



MetaTrader 5

Version 2.00

INDEX

Page	Content
3	What is Oraculum?
4	How to get Oraculum
4	Recommended Currency Pair and Time Frame
5	Brokers, account types
6	VPS
6	Oraculum TURBO Mode
7	Money Manager
10	Information Panel
11	Commercial Signals
11	Self-learning system
12	Information and Contact
13	Risk Notice

What is Oraculum?

Oraculum is an automated trading system designed for the MetaTrader 5 platform.

It utilizes a **Neural Network** trained and optimized for the gold/dollar (XAUUSD) currency pair, featuring an innovative self-learning system that adapts to the fluctuating market conditions to identify the best trading opportunities.

Its development began in early 2023 and was launched in 2024, including a significant update with version 2.00 which introduced the **TURBO Mode**, Oraculum's most advanced and aggressive feature for rapid profit growth.

Developed by Juan Pérez, an investor and developer, after over a year of researching neural networks for Forex market trading, Oraculum's strategy core relies on an advanced algorithm that identifies minor price inflection points, areas where the price is likely to make small adjustments at support and resistance levels during an intraday trend, complemented by a scalping system for “surgical” opening/closing of trades.



How to get Oraculum

Oraculum is exclusively available on the [MQL5.com](https://www.mql5.com)

Market and is designed solely for the MetaTrader 5 platform. Its incompatibility with MetaTrader 4 stems from the superior power and resources of MetaTrader 5, which are essential for Oraculum's optimal performance. These advantages of MetaTrader 5 over MT4 are crucial for leveraging the full capabilities of the Oraculum system.

Oraculum website:

<https://www.mql5.com/en/market/product/110723?source=Site+Market+My+Products+Page#>

For more information about other options to obtain Oraculum, you can request information by writing to email:

jpp.forex@gmail.com

Recommended Currency Pair and Time Frame

As mentioned, Oraculum was trained and optimized for the gold/dollar (**XAUUSD**) currency pair, which is the **ONLY** one recommended for Oraculum's use. This specificity is due to all of Oraculum's features and parameters being finely tuned to the unique characteristics of this currency pair, including spread, volatility, pip value, etc.

On the other hand, the **TimeFrame** or period in which the chart where Oraculum is activated must be set to **M30**. This is due to the intraday trading system nature of Oraculum, using the candlestick guide in this timeframe to follow the logical sequence of its algorithm.



Broker, account types

Choosing the right broker is a fundamental and crucial matter. Due to differences in commissions and spreads among various brokers, it's important to have the best possible conditions for trading.

As Oraculum employs a scalping system targeting small movements for opening/closing trades, having the best possible spread is crucial. This can significantly impact Oraculum's performance, making the choice of broker with favorable spread conditions essential for optimizing the system's efficiency and profitability.

Similarly, the choice of account types is crucial, with **RAW SPREAD** accounts being highly recommended due to their characteristic of having a very low spread. This feature makes them ideal for maximizing the performance of Oraculum by minimizing trading costs associated with spreads.

Does Oraculum work on all brokers or account types?

The short answer is NO, let's explain this:

The XAUUSD currency pair often has a very high and volatile spread, with rapid increases. Scalping strategies aim for small movements, many trades with a small profit. If our broker has a very high spread for XAUUSD, the cost of the spread and commissions could exceed the profit from the trade. This would result in trades closing negatively (*or with minimal profit*) even if the signal was correct.

Likewise, a type of account other than RAW SPREAD will cause the same problem.

Oraculum has been trained and optimized using the brokers **IC MARKETS** and **IC TRADING**, specifically on **RAW SPREAD** accounts. This combination is considered the best setup for achieving optimal results. However, Oraculum can still be used with other brokers, provided that the spread for XAUUSD is not excessively high. This flexibility allows for broader broker compatibility while aiming to maintain performance efficiency.

For more information about these brokers, you can request information by writing to email: jpp.forex@gmail.com.

VPS

Having an Expert Advisor or trading robot operating 24 hours a day requires that your MetaTrader platform is always active. Using your personal computer for this purpose is not the most recommended approach.

There are many situations where you could lose internet connection, or an unexpected Windows update occurs. Such interruptions can cause your trading robots to lose access and control over any open trades they're managing. This highlights the importance of ensuring a stable and continuous operation environment for your trading activities.

The optimal solution to ensure uninterrupted trading is to hire a VPS (Virtual Private Server), where you can install MetaTrader and your trading robot, in this case, Oraculum. VPS servers offer much faster connection speeds to the broker's server than a home computer can achieve, allowing for quicker execution of trades, which is crucial for maximizing Oraculum's performance.

It is highly recommended to use VPS for using Oraculum.

Oraculum TURBO Mode

Oraculum's **TURBO Mode** is described as the "**Ultra-Boosted**" version of its strategy.

This mode configures the neural network to operate at a highly active level, significantly increasing the number of trades Oraculum makes, making it undoubtedly its best feature.

It's important to note that TURBO Mode can have its drawbacks, as a higher number of operations also implies a greater number of false signals, resulting in many of these operations closing at a loss. This highlights the need for careful consideration and risk management when utilizing this aggressive trading strategy.

However, simulations and studies on real accounts forecast that **TURBO Mode** is undoubtedly the best option for configuring Oraculum, **potentially offering unprecedented results not yet seen in any trading robot.**

TURBO Mode is activated by default in the settings, but investors can deactivate it with a single click before starting Oraculum.

Oraculum 2.00

Common Inputs

Variable	Value
ORACULUM	
ab Version	Version 2.00
ab Commen EA	Oraculum EA
O1 Magic Number EA	13022024
Active TURBO Mode	true
MONEY MANAGER	
Select Money Manager Type	Balance
1/2 Fixed Lot	0.01
O1 Balance/Equity	150
1/2 Lot	0.01
CHART STYLE SETTING	
Graphic Resources	true
Select Language	English
Background Color	Black
Bullish Candle Color	Gold
Bullish Candle Edge Color	Goldenrod
Bearish Candle Color	Black
Bearish Candle Edge Color	Yellow

INFORMATION PANEL

ORACULUM

INFORMATION

SIGNAL BUY

SIGNAL SELL

MONEY MANAGER

Type: 0.01 Lots each 150 Balance.

Current Lot = Incorrect lot, exceeds free margin.

ACCOUNT INFORMATION

Leverage 1:500

Environment: REAL ACCOUNT

Broker: Raw Trading Ltd

INVESTOR

Perez Pereira Juan

TURBO

Money Manager

Oraculum allows investors to adjust the risk level according to their trading profile or capital drawdown tolerance, offering the ability to precisely select the lot size for each operation. This feature caters to individual risk management preferences, enabling a tailored approach to trading with Oraculum.

MONEY MANAGER	
Select Money Manager Type	Balance
1/2 Fixed Lot	0.01
O1 Balance/Equity	150
1/2 Lot	0.01

Let's look at the different configuration options:

In the "**Select Money Manager Type**" tab, double-clicking on the word "**Balance**" will open a dropdown with 3 options: **Balance**, **Equity**, and **Fixed Lot**.

- **Balance:** It sets the lot to be "X" for every amount of balance in our account, and this is determined using the "**Balance/Equity**" and "**Lot**" fields.

$$\text{Lot} = \text{Our Balance} / \text{"Balance/Equity"} * \text{"Lot"}$$

Example: we have a balance in our account of \$1000, we select in the boxes:

- **Select Money Manager Type = Balance**
- **Balance/Equity = 100**
- **Lot = 0.01**

This setup means the position size will be **0.01 for every \$100** of balance in your account. For the previous example, the final lot size for each position will be calculated based on this ratio.

$$\text{Lot} = 1000 / 100 * 0.01 = 0.1 \text{ Lot}$$

- **Equity:** It operates exactly as the previous example, but this time Oraculum will reference our account's equity instead of the balance. Balance refers to the capital we have regardless of open positions, while equity considers the capital including gains or losses from open positions.

Example: we have a capital of \$1000, but we have an open position that at that moment has a profit of \$100, our equity will at that moment be \$1100, if we select the boxes:

- **Select Money Manager Type = Equity**
- **Balance/Equity = 100**
- **Lot = 0.01**

This setup will make the position size be 0.01 for every \$100 of equity in our account. For the previous example, the final lot

size for each position will be:

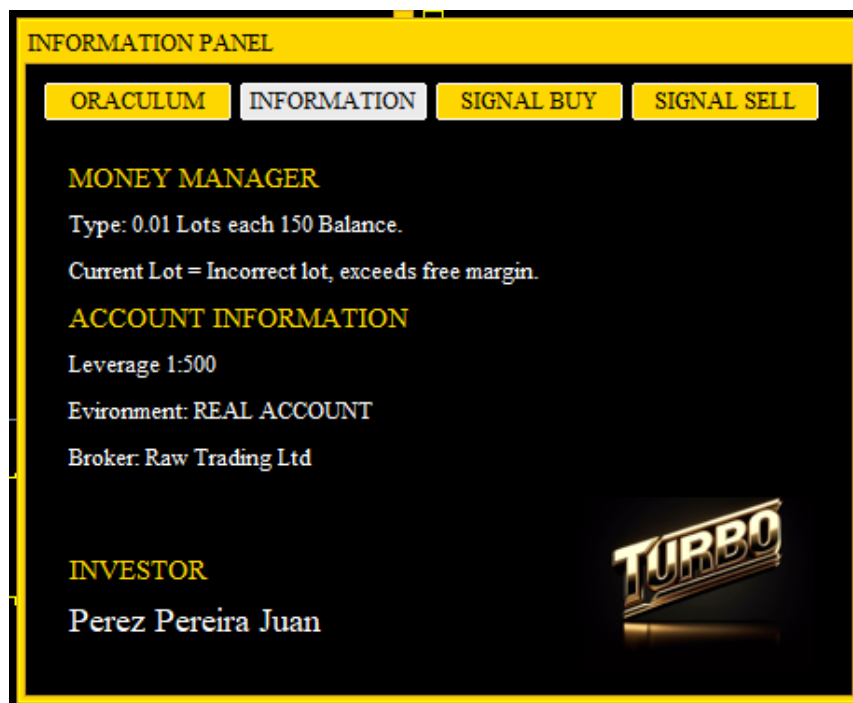
$$\text{Lot} = 1100 / 100 * 0.01 = 0.11 \text{ Lot}$$

- **Fixed Lot:** It sets a fixed lot size, regardless of our balance or equity, and is determined with the "**Fixed Lot**" field.

Example: we select the following boxes:

- **Select Money Manager Type = Fixed Lot**
- **Fixel Lot = 0.01**

This configuration ensures that Oraculum will always open its positions with a lot size of 0.01, regardless of our balance or equity.



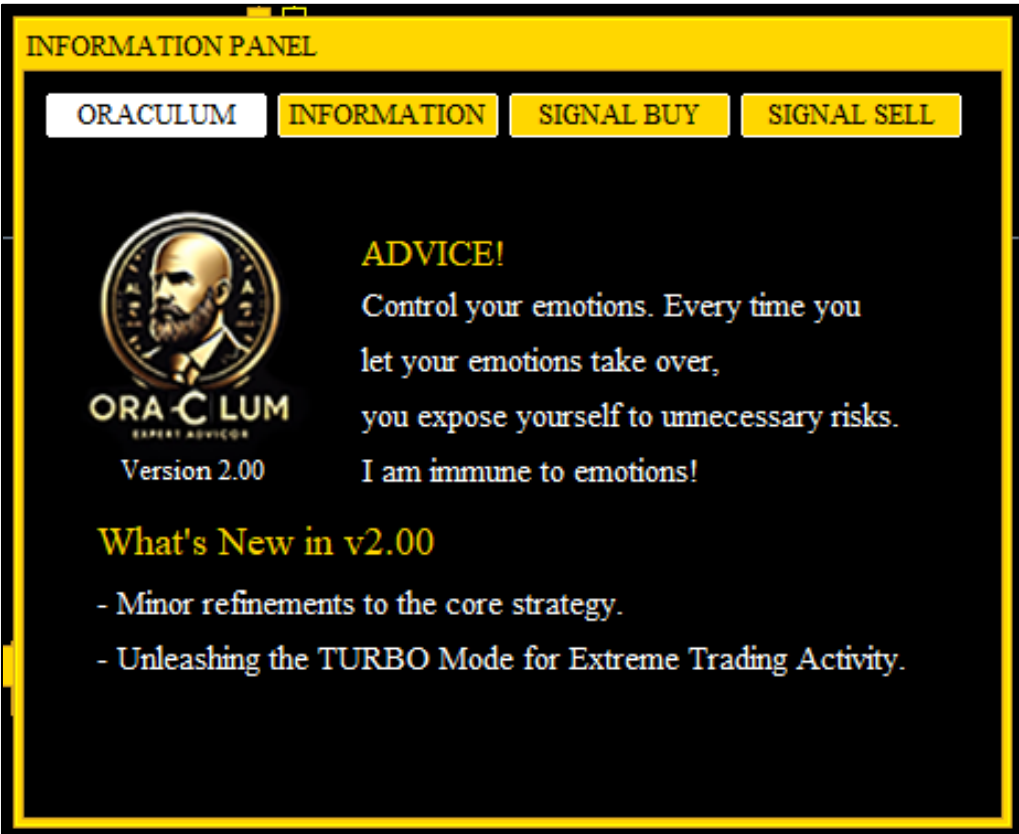
** It's **crucial** to understand that the type of leverage we have can affect the lot size when opening a position. If there's insufficient "free margin," the broker will deny permission to open a position, and Oraculum will display a "Print" message indicating "insufficient margin." With low leverage, it's not recommended to set Oraculum in "aggressive" mode, as there's a risk of exceeding the free margin available to open a position.*



Information Panel

Oraculum features an interactive information panel translated into 5 languages: English, Spanish, French, German, and Italian.

This panel allows investors to access real-time information about Oraculum's operation, including Money Manager settings, investor account data, buy/sell signal information, and tips on good trading practices.

This panel can be disabled from the Oraculum options



 Graphic Resources	true
 Select Language	English

Commercial Signals

Oraculum provides live trading signal monitoring on **REAL ACCOUNTS** hosted with the recommended brokers IC Markets and IC Trading. These accounts allow investors to observe the actual and effective performance of the Expert Advisor in **real-time**. This feature is designed to give investors transparency and confidence in the system by showcasing its effectiveness under live market conditions.

All Expert Advisors may perform differently in real trading compared to backtesting due to numerous factors that affect live trading and are **impossible** to replicate in a backtest. This is why observing the performance of an Expert Advisor on a real account with a trusted broker is the best reference for its functionality.

- Here you have the Oraculum trading signals:
- **TURBO Mode:**
<https://www.mql5.com/es/signals/2206222?source=Site+Profile>
- **Normal Mode:**
<https://www.mql5.com/es/signals/2170865?source=Site+Profile+Seller>

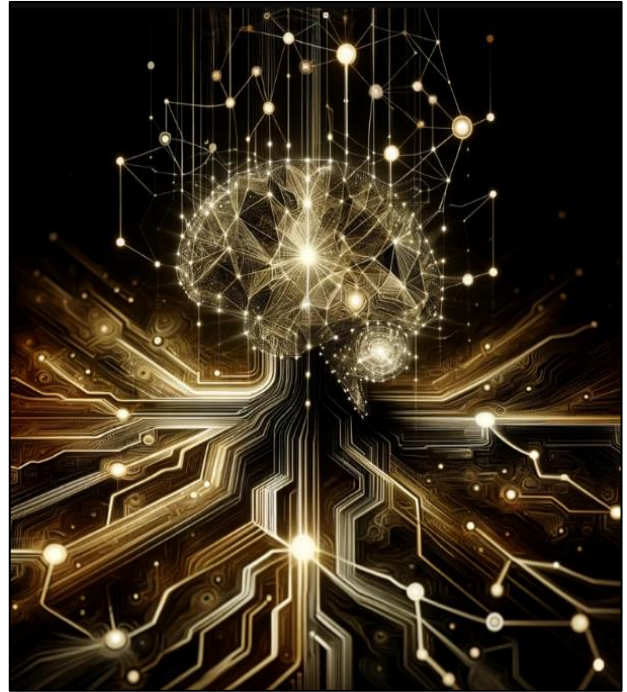
Self-learning System

As the investor is already aware, Oraculum is a Neural Network trained to trade automatically in the Forex market, specifically with the XAUUSD currency pair.

It also features a protocol to record all information related to its operations (involved spreads, execution delays, broker commissions, etc.). The algorithm uses this information to update its settings in response to market developments, ensuring it remains aligned with market characteristics. This adaptive approach helps maintain Oraculum's effectiveness in changing market conditions.

The gold market (XAUUSD) has seen remarkable price evolution over the last decade, posing a significant challenge for trading robots that operate in it.

The rapid changes in this currency require trading robots to continuously adapt or risk failure. Oraculum, with its self-learning system, is capable of adjusting to these changes to stay up-to-date, ensuring its strategies remain effective despite the volatile nature of the gold market. This adaptability is a key feature that sets Oraculum apart in the dynamic trading environment.



Oraculum = An intelligent and self-evolving Neural Network!

Information and Contact

If you have any questions or requests for additional information, you can contact us at the following email:

Jpp.forex@gmail.com

You can also contact the developer on their MQL5.com page:

<https://www.mql5.com/en/users/manker/news>

Risk Notice

- Forex and CFD trading with leverage involves risks and may not be suitable for all investors. Before starting to trade, carefully consider your objectives, level of experience, risk appetite, and financial situation.
- Any opinions, analyses, or other information contained in this manual are for informational purposes regarding the use of the Oraculum Expert Advisor and **do not constitute investment advice**. We are not responsible for any loss or damage, including but not limited to loss of profits, that may arise directly or indirectly from the use of Oraculum or reliance on this information.
- The profit generated by a trading strategy in the past (*including Oraculum*) is never a guarantee of future profits.
- If you are not familiar with the risks of trading financial products with leverage, we recommend that you do not use Oraculum until you have received appropriate training.
- Never invest capital that you cannot afford to lose.
- There is always a relationship between high profit and high risk. Any type of speculation in the markets or operations resulting in unusually high returns carries a high level of risk.