

## **GOLD STUFF AI MANUAL**

**All products are available here:**

[https://www.mql5.com/en/users/vasiliy\\_strukov/seller](https://www.mql5.com/en/users/vasiliy_strukov/seller)

**Blog with set files and manuals here:**

<https://www.mql5.com/en/blogs/post/753060>

Best pairs are eurUSD; gbpUSD; audUSD; xauUSD and nzdUSD.



Gold Stuff AI uses a combination of a trend indicator and fundamental analysis. The advisor uses the Gold Stuff indicator as entry and uses artificial intelligence to analyze macroeconomic data to control trade direction.

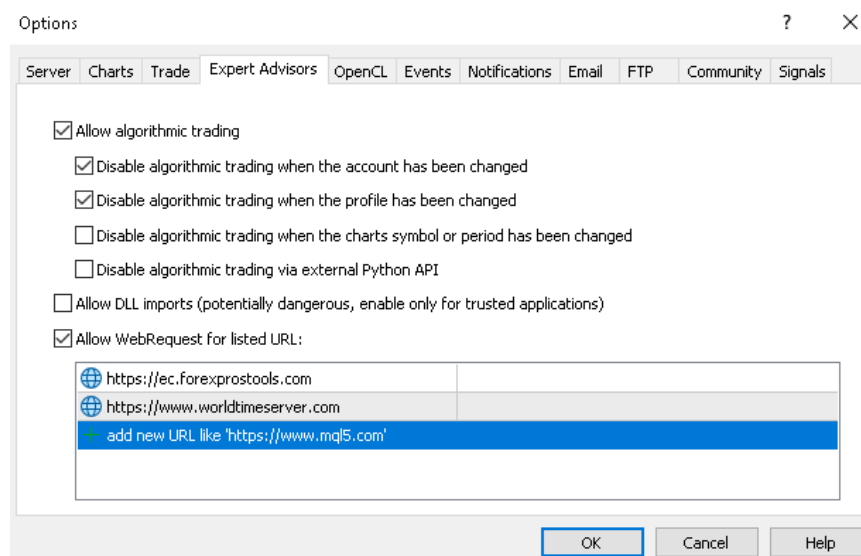
Expert need hedge type account for work. After installing the EA, allow web request function by doing the following:

On your terminal go to “Tools”; “Options”; “Expert Advisors” and click on “Allow WebRequest” for listed URL:

**Add and type in the following url links:**

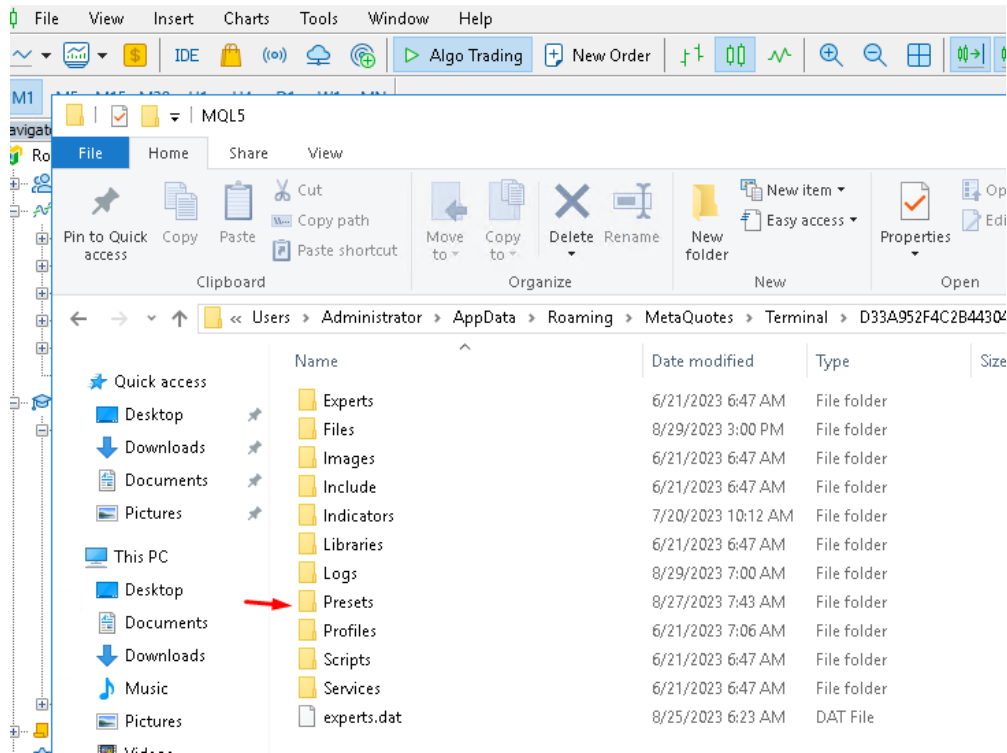
<https://ec.forexprostools.com>

<https://www.worldtimeserver.com>

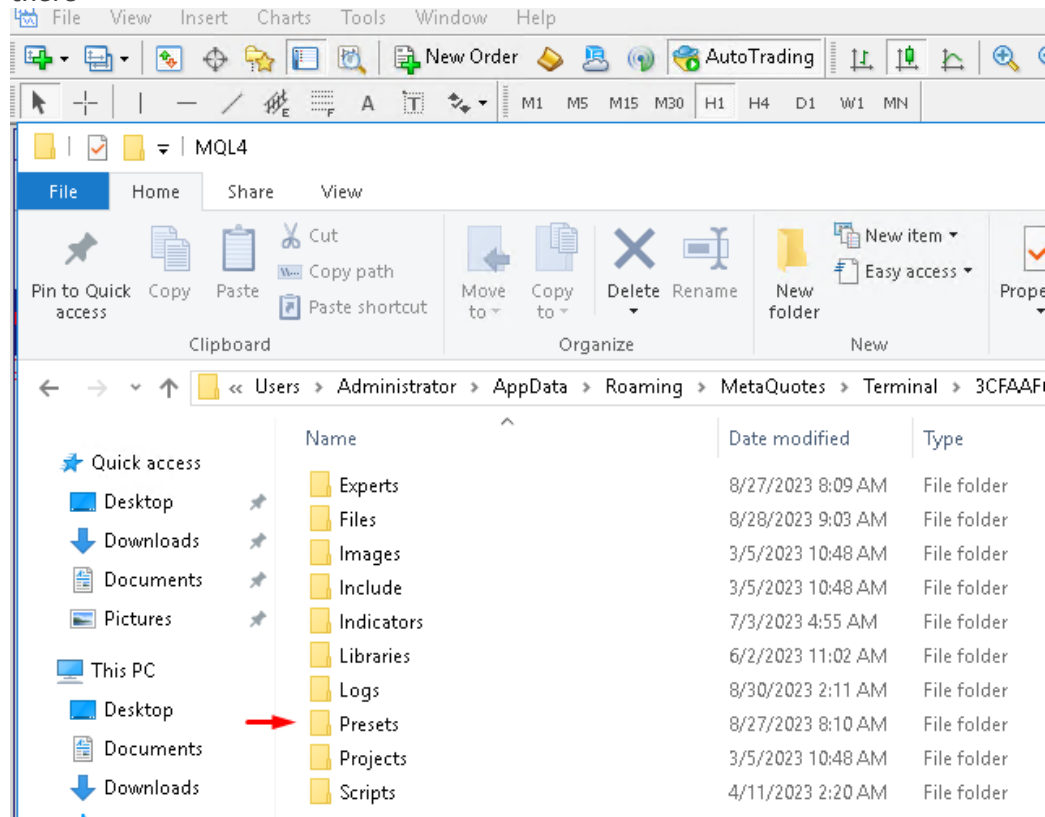


1. Install the set files:

For Mt5: Go to “File”; “Open Data folder”; MQL5; “Presets” and drop your set files there. (If the “Presets” folder is missing, right click and create a folder for presets)

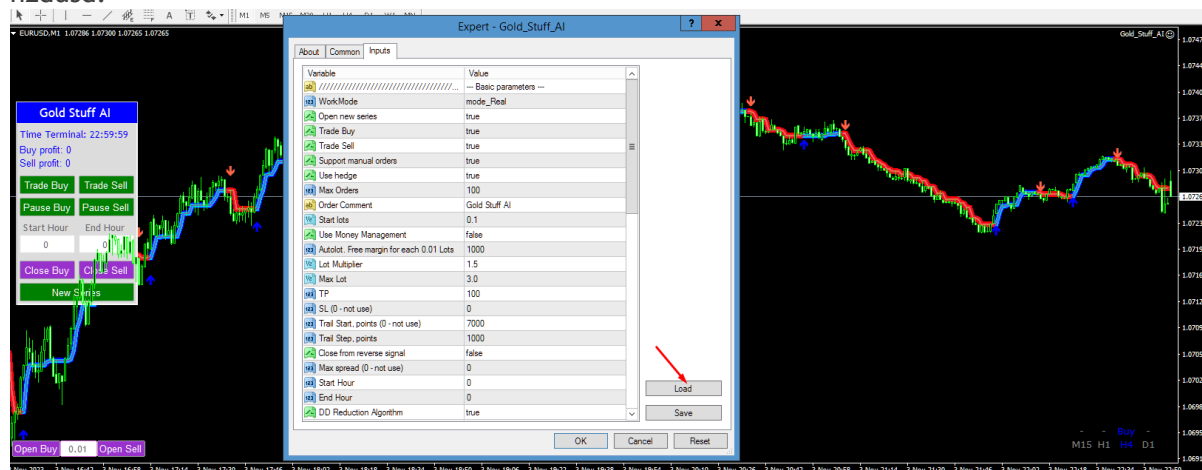


For Mt4: Go to “File”; “Open Data folder”; MQL4; “Presets” and drop your set files there



2. Load the set file by opening up the settings and click on “Load” and select the set file in the presets folder.

It works on all usd pairs on m1 chart. Best pairs are eurUSD; gbpUSD; audUSD and nzdUSD.



- Make sure that “WorkMode” settings are **always** set to “mode\_Real”. Never use “Mode\_Test”. (“Mode Test” is used for strategy testing but will not work properly because the EA is using the news filer and cannot be back tested.  
In Test mode the EA will only use Gold Stuff Indicator  
In Work mode the EA will use the news to trigger a trade and then use Gold Stuff Indicator



Examples

Example of a trades of Gold Stuff AI above.

The EA will draw a vertical line on the chart on the time that the news will be released! The EA will open orders following the direction of the market after the news announcement and will keep on opening orders in the same direction after the TP has been hit. It will just open trades using direction Gold Stuff Indicator .

#### 4. GENERAL SETTINGS IN THE EXPERT ADVISOR

a) **WorkMode:**

Make sure that “WorkMode” settings are **always** set to “mode\_Real”

In Test mode the EA will only use Gold Stuff Indicator

b) **Open new series:**

True (EA will open a new series of trades if setting is True, if set to False EA will not start a new series after hitting TP)

c) **Trade buy:**

If True, EA will buy

d) **Trade sell:**

If True, EA will sell

e) **Support manual orders:**

If true then EA will control all orders entered by trader using panel on chart

f) **Use hedge:**

If true then EA will be allowed to take buy and sell orders simultaneously

g) **Max Orders:**

The maximum amount of buy and sell orders open at once on chart

h) **Order Comment:**

The name of EA to be displayed next to order

i) **Start lots:**

The minimum starting lot

j) **Use Money Management:**

If False start lot will never increase as account grows

k) **Autolot. Free margin for each 0.01 Lots:**

For example: If 1000 then EA will increase initial lot from 0.01 on 1000 to 0.02 on 2000 margin

l) **Lot Multiplier:**

Multiplying of lot size after next fix distance has been reached.

m) **Max Lot:**

Maximum lot size that EA will place in a series. If max lot has been reached the EA will just repeat it.

n) **TP:**

Take Profit in points (100 is 100 points but 10 pips)

o) **SL (0 – not use):**

Stop Loss (normally we don't use it)

p) **Trail Start, points (0 – not use):**

Trailing start in points (normally we don't use it if TP is less than 150 points)

q) **Trail Step, points:**

trailing will jump after each amount of points (normally we don't use it if TP is less than 150 points)

r) **Close from reverse signal:**

EA will close all open trades if signal changes from buy to sell or from sell to buy

s) **Max spread (0 – not use):**

Allowing EA not to trade if max spread is exceeded

t) **Start Hour:**

The Hour that the EA should start trading (for example 8)

u) **End Hour:**

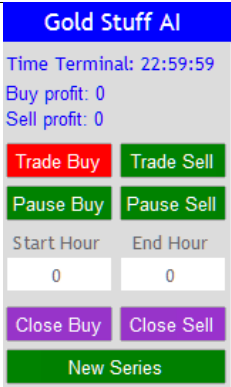
The Hour that the EA should stop trading (for example 12)

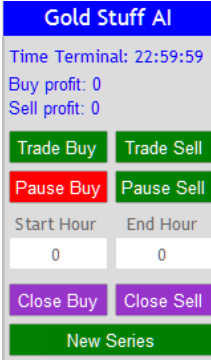
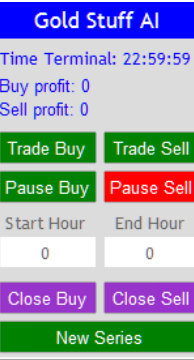
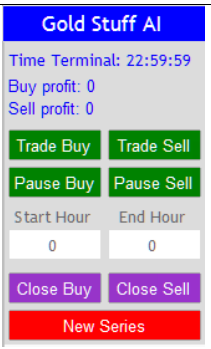
v) **DD Reduction Algorithm:**

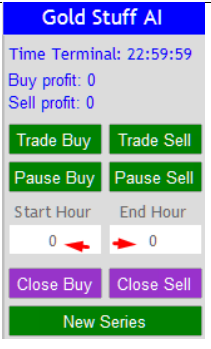
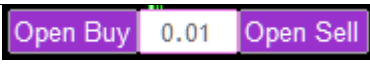
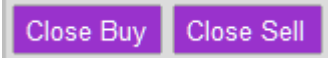
True – EA will cut first and last trade in slight profit if draw down exceeds a certain number of trades

- w) **Number order for DD Reduction Algorithm:**  
Number of orders the EA will allow before cutting first and last trade
- x) **Percent profit for DD Reduction Algorithm:**  
Percentage profit to allow when cutting first and last trade
- y) **Draw on-off:**  
If true, the EA will draw profit tags on chart
- z) **Next is display of Font size; color and Background color**
- aa) **Pause between orders:**  
EA will pause a certain amount of minutes between next order for safety
- bb) **Magic EA:**  
The unique magic number the EA will draw in each order, to identify the EA
- cc) **Distance Settings:**  
Fix distance:  
distance between orders in points, like 200 is 20 pips
- dd) **Order dynamic distance:**  
From which order will the dynamic distance be applied in above case and in default settings it will be the 6<sup>th</sup> order
- ee) **Dynamic distance start:**  
This value sets the distance between First Order and current market price, where the Dynamic Distance will begin.
- ff) **Distance multiplier:**  
This value sets the multiplication factor for increasing the Distance (gap) between orders of a Series
- gg) **TF:**  
Means time frame of chart, for example m1 is one minute.
- hh) **Deviation:**  
slippage of price
- ii) **News Setting:**  
Use Only USD News – (leave true)

## 5. PANEL ON CHART

	<p>“Trade Buy”: if you click this button and it goes red the EA will not allow buy orders in new series but the EA will still handle open buy orders or open new buy orders until it hits Take Profit of current series. After hitting profit it will not open a buy again.</p> <p>“Trade Sell”: if you click this button and it goes red the EA will not allow sell orders in new series but the EA will still handle open sell orders or open new sell orders until it hits Take Profit of current series. After hitting profit it will not open a sell again.</p>
---	--

		<p>“Pause Buy”: if you click this button and it goes red all buy positions will be paused and EA won’t add more until you click it again and it goes green then it will add again, the EA will always control the open trades.</p> <p>“Pause Sell”: if you click this button and it goes red all sell positions will be paused and EA won’t add more until you click it again and it goes green, the EA will always control the open trades.</p>
		<p>“New Series” If you click on this button and there are trades open the EA will still enter new orders until the current series of transactions are closed, after closing it, it will not open new orders again. If there are no open trades and you click on this button it will not start a new cycle.</p>

	<p>By entering the “Start Hour” and “End Hour” times you can restrict the EA to only work during certain times, like Asian session or London session etc. After closing of “End Hour” EA will still control all open trades until it hit the Take Profit. Thereafter the EA will wait until the next “Start Hour”.</p>
	<p>“Open Buy” if you click on this button it will open a buy order according to lot size as indicated  “Open Sell” if you click on this button it will open a buy order according to lot size as indicated</p>
	<p>“Close Buy” if you click on this button it will close all buy orders  “Close Sell” if you click on this button it will close all sell orders</p>

## 6. MONEY MANAGEMENT

It is recommended that you use the following lot sizes and start with Low Risk until you understand the strategy:

Low Risk: Minimum of \$3000, use initial lot of 0.01

Medium Risk: Minimum of \$2000, use initial lot of 0.01

High Risk: Minimum of of \$1000 use initial lot of 0.01

Remember that all usd pairs are correlated and if you get a draw down in one pair it is possible to get a draw down in other pairs also, so allow enough margin.

## 8. SPECIAL OFFERS

### a) Get all EA's for free!!



Open an account with **RoboForex** (<https://roboforex.com/>), deposit a minimum of \$ 500 and get all EA's free: Use code "twds" when opening the account and contact me to get free EA's: @vstrukovEA or @ Dkmillion on telegram.

Open a Trading Account - RoboForex Ltd

The image is a screenshot of the RoboForex website's 'Open a Trading Account' form. The form has a light blue header with the title 'Trading Account' and four tabs: 'Real' (selected), 'Demo', 'Copy FX Trader', and 'Contest'. Below the tabs, there are several fields for account configuration: 'Trading platform' (dropdown menu set to 'MetaTrader 5'), 'Account Type' (dropdown menu set to 'MT5 ProCent'), 'Hedge system' (radio buttons for 'Yes' and 'No', with 'Yes' selected), 'Currency' (dropdown menu set to 'USD'), 'Leverage' (dropdown menu set to '1:1000'), 'Password' (text input field), 'Confirm Password' (text input field), and 'Affiliate code' (text input field containing 'twds'). A red arrow points to the 'Affiliate code' field. At the bottom of the form is a blue 'Confirm' button.

Please enter affiliate code "twds" as in screen shot above

#### **RoboForex cents accounts:**

mt5: minimum lot is 0.01

mt4: minimum lot is 0.1

Please send me the account number The EA will be coded for your TWDS account number and **will only work on that account number**, not on any other account (also not on a demo, you may request for a demo).

Let me know if it is mt4 or mt5

Send me a list of the EA's you want, take note that these EA's are martingale and it is better to use a cents account as you need about 3000 per chart but for Network you can start with \$500

(Please remember that author will first check if your account number is on his affiliate list. It takes time to code every EA for your specific account number and if you open an account with \$500 then obviously it will be impossible to run every EA's on that account. So think about this and plan your system before making your request. Remember that every time you change account number you have to use the TWDS code again and request author to code EA for new account number.)

**b) Discount on a good and fast, reliable vps!!**



**SPECIAL PROMOTION ON THE BEST AND FAST VPS! GET 5% DISCOUNT!**

\* To use an EA you need a VPS: Click on this link for Chocoping.com

(<https://chocoping.com/processing/aff.php?aff=567>)

When you open the account type in the discount code to get 5% off: CHAMP0001

**c) Buy one EA get one free!!**

You are welcome to have one free gift for every one EA you bought. Please send me the screen shot of your purchase. You will then qualify for your gift. Please let me know what other EA or indicator you want and send the following information (you can also use my telegram address here:

@vstrukovEA or @Dkmillion)

1. Send EA/Indicator you want
2. Send maximum of 2 metatrader account numbers so that I can code it for your account, **it will only work on those account numbers!**
3. Let me know if it must be coded in mt4 or mt5

**8. STOP LOSS**

We recommend that you use Equity Shield to protect your account.

**Available here:** <https://www.mql5.com/en/market/product/86312?source=Site+Profile+Seller>

**Risk Warning:**

*Trading Forex involves significant risk and can result in the loss of your invested capital. You should not invest more than you can afford to lose and should ensure that you fully understand the risks involved. Trading leveraged products may not be suitable for all investors. Before trading, please take into consideration your level of experience, investment objectives and seek independent financial advice if necessary. Make sure that you fully understand the risks before you make any trading decisions.*

---oOo---