



# NEXUS

**TRENDEx**  
— AUTOMATIC TRADING —

PREMIUM EA

# NEXUS VERSION MT4 6.40 & MT5 6.11

## INDEX OF CONTENTS:

1. [Product description](#)
2. [What's new in the update](#)
3. [About Nexus. Configuration Parameters Overview](#)
4. [First steps after purchasing NEXUS](#)
5. [Basic description of the inputs and their operation](#)
6. [Considerations of a grid system: the three fundamental pillars](#)
7. [Nexus Upgrade Guide](#)
8. [Stay informed: Telegram channel](#)
9. [Some recommended VPS](#)
10. [Recommended Brokers](#)
11. [Backtesting: Considerations and Results](#)
12. [Check that everything is working correctly](#)
13. [customer reviews](#)
14. [CRYPTO payments](#)

## **1. Product description**

Nexus is a ready-to-use Expert Advisor with 9 market entry strategies that allow you to customize and adapt the global strategy to the individual needs of the user.

Each entry strategy corresponds to a set of conditions based on technical indicators, price action, and support and resistance levels. You can select several strategies to work together and set criteria to determine the direction of the trend.

It is an averaging EA, which means that if you open a trade and the market moves in the opposite direction, a new trade will be opened to make up for the loss of the first one. This allows you to recover losses and maximize profits in case the market returns to the desired direction. With this technique, the aim is to reduce risk exposure and increase the opportunities to win in the market.

Nexus adapts to price movements, so if there is a big trend, it will not open trades until it is expected to stop. This reduces risk and maximizes profit, allowing the user to take advantage of the earning opportunities in the market efficiently. This is accomplished by using an advanced algorithm that analyzes price movements and determines when the right time to open a trade is.

The Expert Advisor has a trailing stop loss system, which is a risk management tool that allows you to set a maximum loss for each trading cycle. If this limit is reached, the system will automatically close the operations, thus reducing the user's risk.

A Stop Loss can also be set based on the number of trades, this allows the user to set a stop loss for each cycle.

Nexus also has a dynamic take profit system, which is a profit management tool that allows you to set a maximum profit for each trade and another for each cycle. If this limit is reached, the system will automatically close the operation, thus maximizing the user's profits.

It also incorporates an economic news filter system, which is a tool that allows the user to establish a series of parameters to filter the relevant economic news for his trading strategy and avoid being affected by important

news.

The system also allows the user to limit trading days, to avoid days with lower volatility, such as weekends, holidays, etc. Or, quite the contrary, avoid moments of great volatility.

It also incorporates a specific volatility filter, which allows the user to set a maximum volatility limit to open trades. This allows you to reduce risk at times when the price can move rapidly and without warning, which can lead to large losses if precautionary measures are not taken.

## **2. What's new in the update:**

- Input logic data flow optimization: Data processing has been optimized to improve speed and efficiency.
- Removal of old input logics: Input logics that are no longer used have been removed to simplify the code and free up resources.
- Integration of external logic libraries: All external logic libraries have been integrated into the main code for better performance and maintainability.
- 6.30 Input Logic Improvements: Improvements have been made to Strategy 7 and it has been brought in line with Logic E from previous versions for more consistency and efficiency.
- Equal Weighting of Signals: A new technique has been introduced that allows a more equal weighting of the intensity of the input signals, improving the accuracy of the results.
- Signal repetition control: A counter has been implemented that allows knowing the number of times a signal is repeated and which ones are combined more frequently to equalize them.
- Recovery of MinTradesGridActivation and MaxTradesCycleActivation: These inputs have been recovered that allow better control of grid activation.
- Temporary removal of special dates filter: The special dates filter has been temporarily removed to simplify the process and improve efficiency.
- Grid input logic swapping and simplification: Grid input logic swapping has been done to get the same effect with a single "RelationTrendContra" input, making it clearer for the user and easier to optimize.
- Recovery of the news importance input: This input has been recovered, which allows better decision-making based on the importance of economic news.
- Removal of recovery mode logics: The recovery mode logics have been removed since they were consuming a lot of resources and were not being used in any set. The same procedure can be achieved using WeekBenefitsToKeep.
- Recovery Mode improvement and small bug fixes:
- In addition, Recovery Mode has been improved for more efficient and effective recovery operation of losing positions. Fixed a number of minor bugs that had affected its performance in previous versions.

- Additional checks have been introduced to ensure system stability and security. For example, error handling has been implemented in case the operations do not exist or cannot be selected. In this way, a continuous and uninterrupted operation of the system is ensured.
- The volatility filter has been brought in line with the MT5 version where a slightly different filter was introduced which is giving better results in all tests
- Sets have been improved, making it easier for the user to manage risk and capital with fewer options that can be confusing.

### **3. About Nexus. General configuration parameters:**

NEXUS is a trading Expert Advisor that allows the user to control market entries through different technical analysis strategies, as well as limit the time and days of the week to open trades.

Technical analysis strategies include: BBands, Price Action, Parabolic SAR, ATR + MA, RSI Oscillator, MACD, Bulls + Bears, and CCI, WPR + OsMA.

The user can choose the time frame for technical analysis and price action analysis. You can also select a lot size strategy and define an initial lot as well as the multiplication factors for the martingale strategy.

Furthermore, NEXUS allows the user to filter trades by day of the week and time, and one can also set limits for the number of trades and close them when the limit is reached.

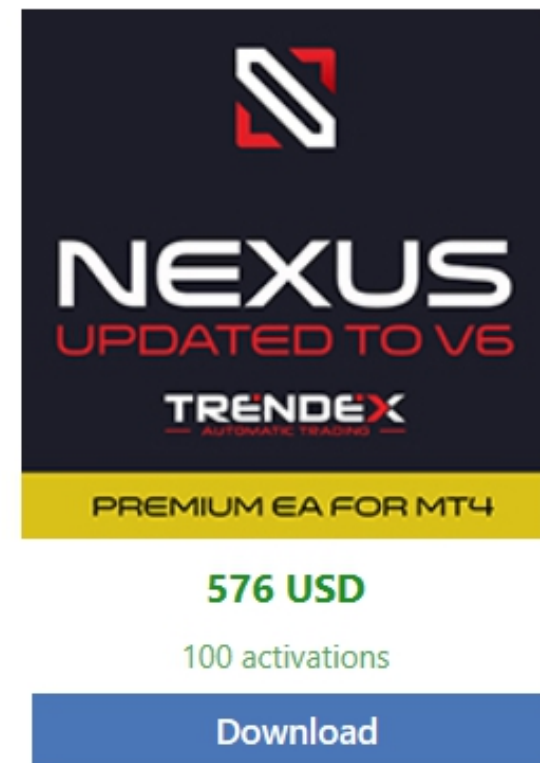
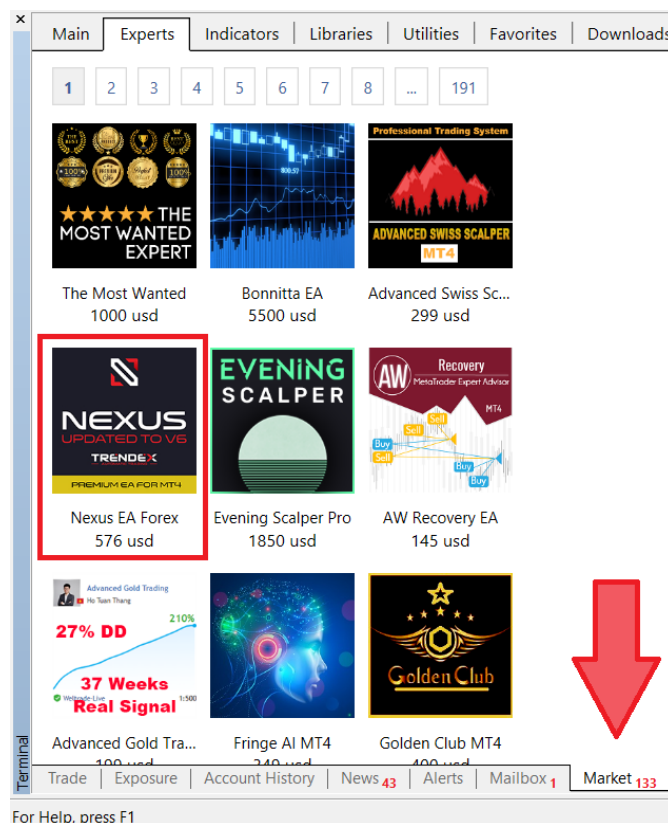
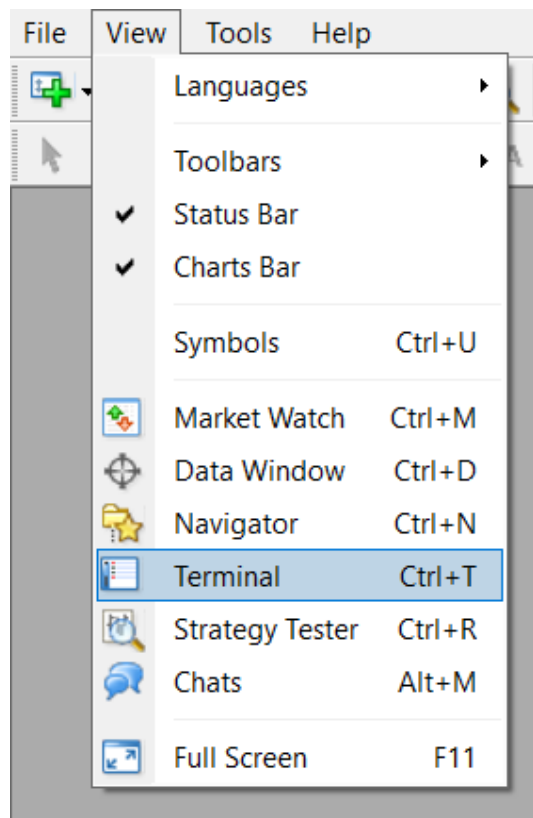
Other variables include trading limits and preferences such as maximum slippage, maximum spread, stop loss usage, hedge management, take profit, grid configuration, display, and news filter. There are also variables for the presentation of information on the platform, such as the font and size of the text and colors.

### **4. First steps after purchasing NEXUS:**

- **Download the Expert Advisor**

To do this you must open the Terminal, you can press Ctrl+T. (1)

Then go to the Market tab, and look for the product (2)  
Now you can download it (3)



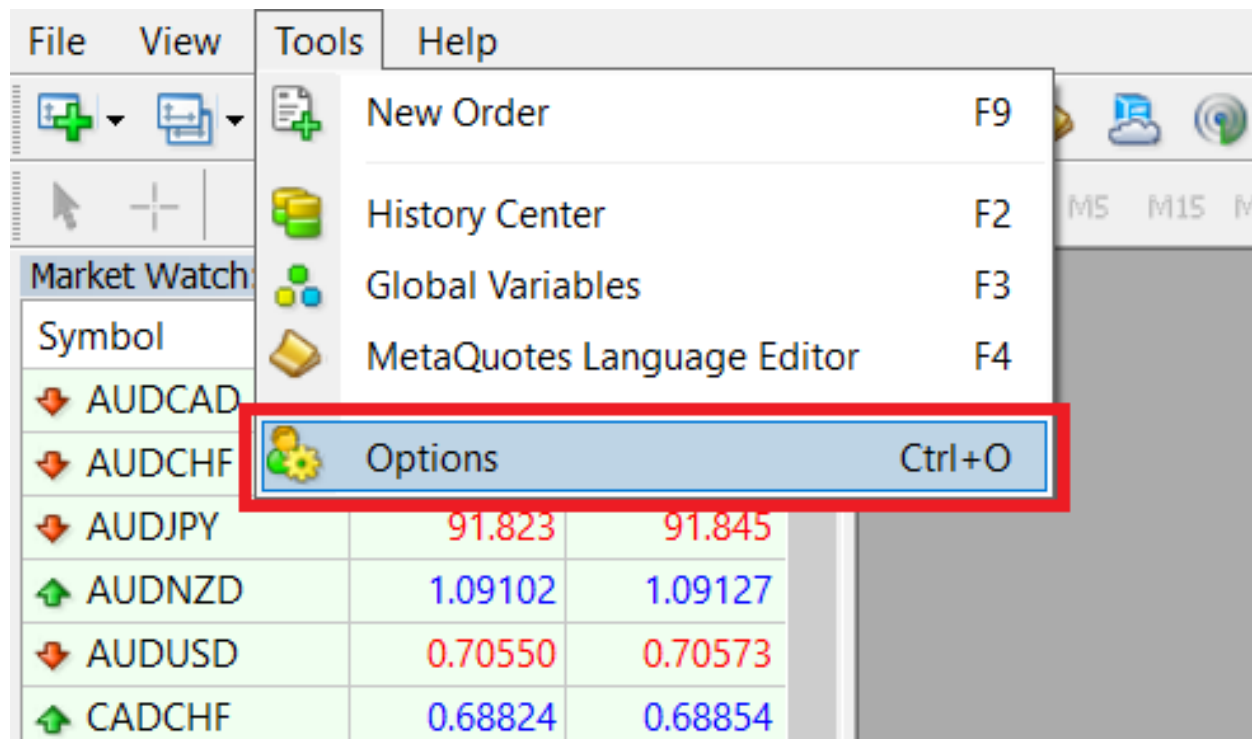
- **Allow Web Request and Allow Automatic Trading**

For NEXUS to have access to financial news you must allow access to fxstreet, at the address

MT4 Version → <http://calendar.fxstreet.com/>

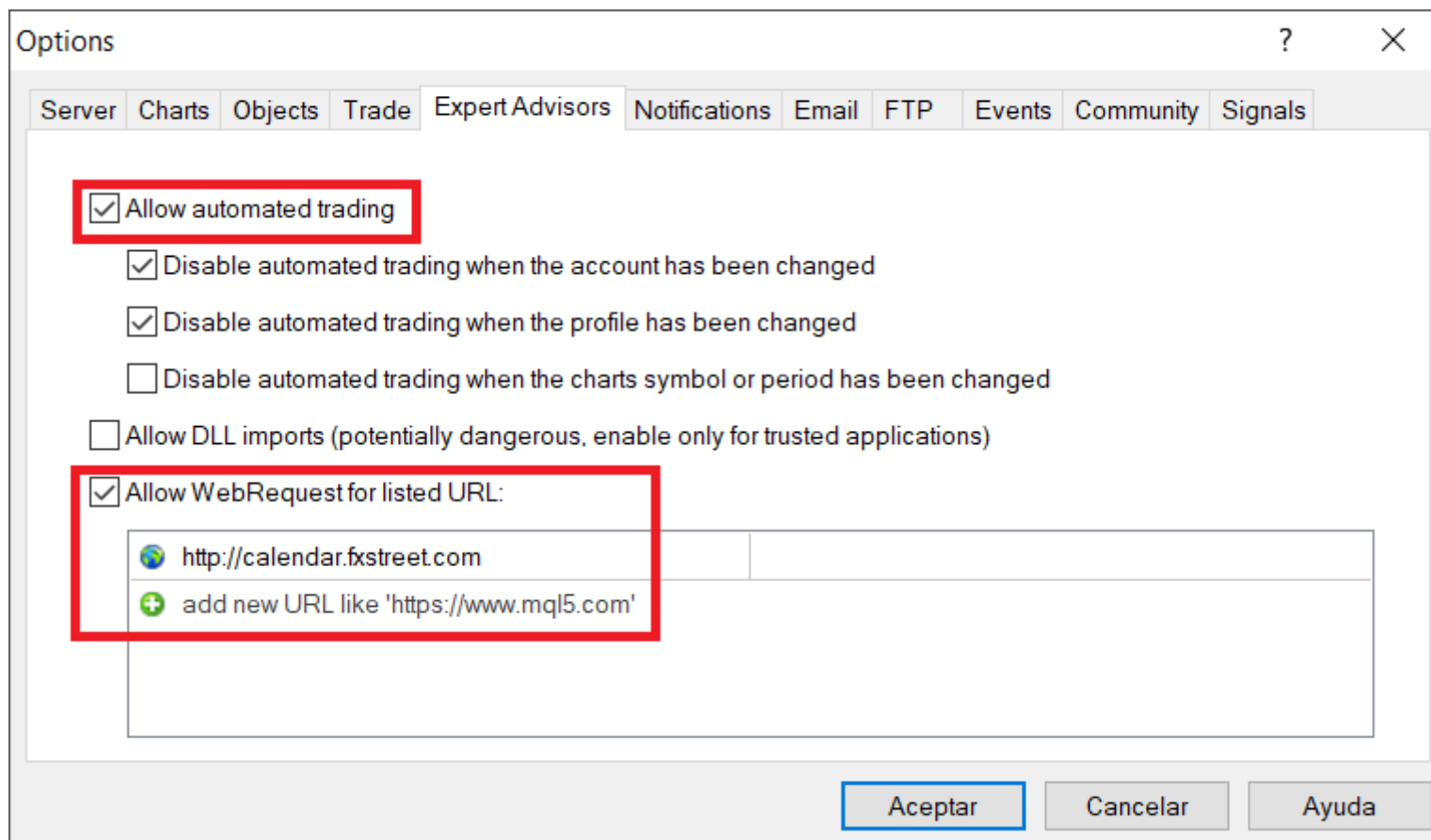
MT5 Version → <https://nfs.faireconomy.media>

We will access the Metatrader options, as shown in the image, you can also press Ctro+O.



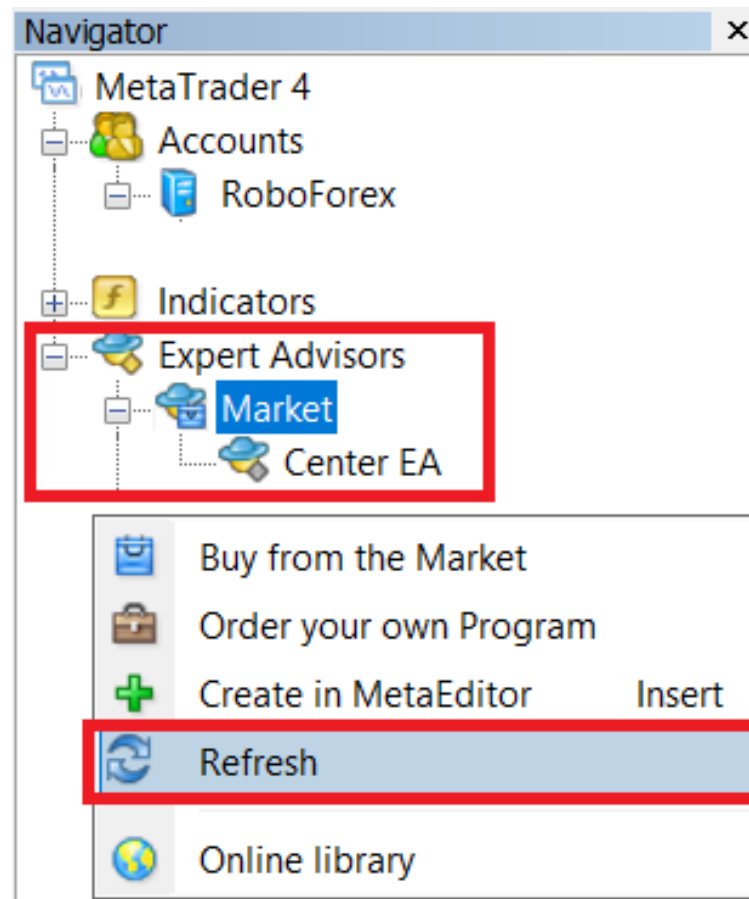


Next **we will check the corresponding boxes for automatic trading and for WebRequest.** We will also add the address indicated for the news filter.



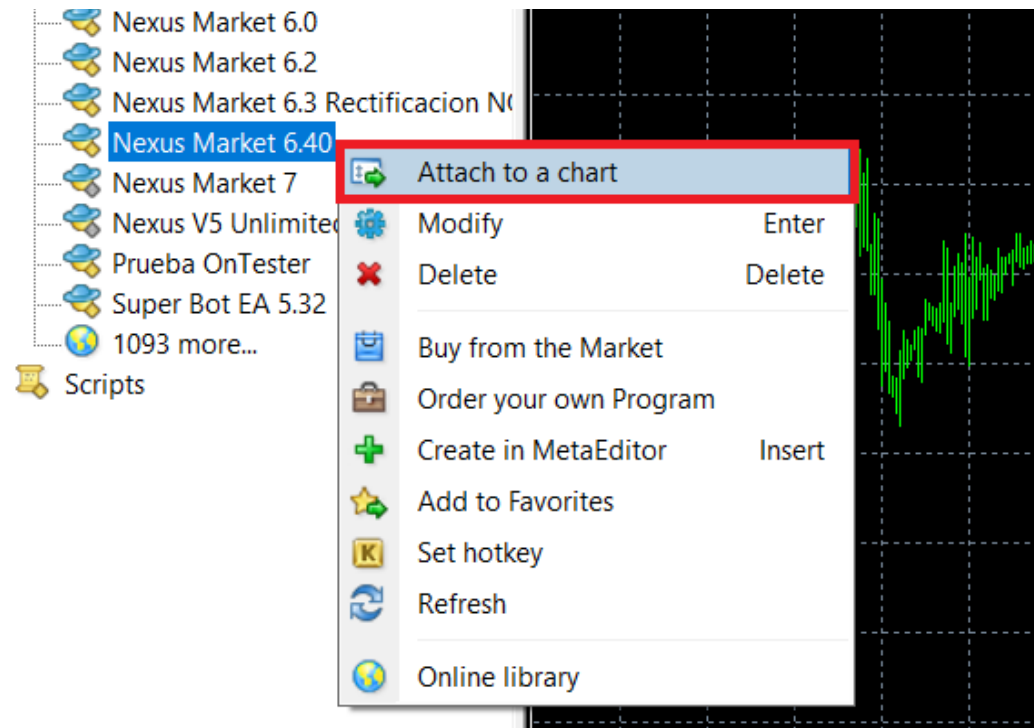
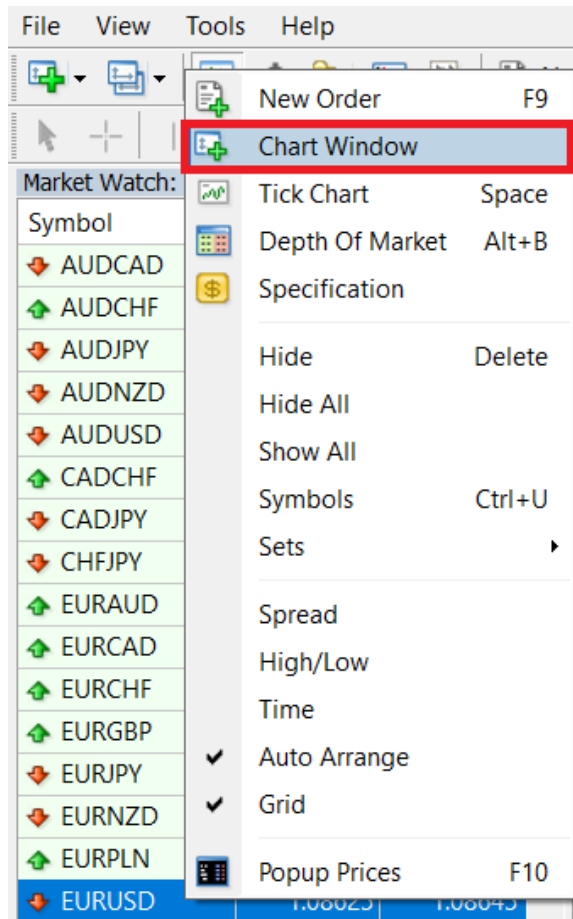
- **Check that NEXUS is in the "Market" folder.**

To do this open the Metatrader Navigator (Ctrl + N) and look in the Expert Advisors > Market folder. In case you don't see it, right click and Refresh.



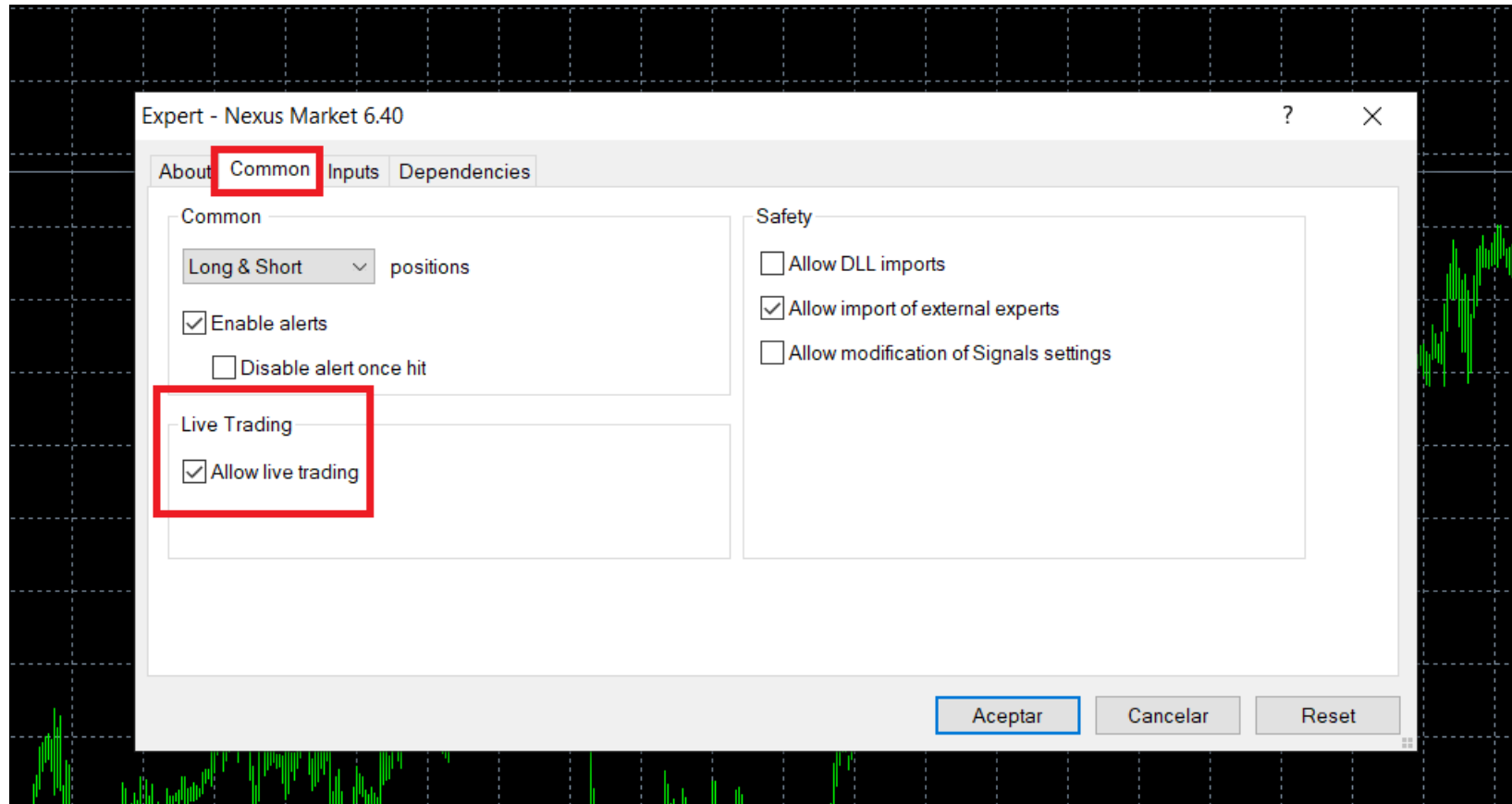
- **Open the chart of a symbol and add the EA**

To open the Market Watch press Ctrl + M, and right click on a symbol. We are going to use the EURUSD. Once open, add NEXUS to the chart (Attach to a chart)



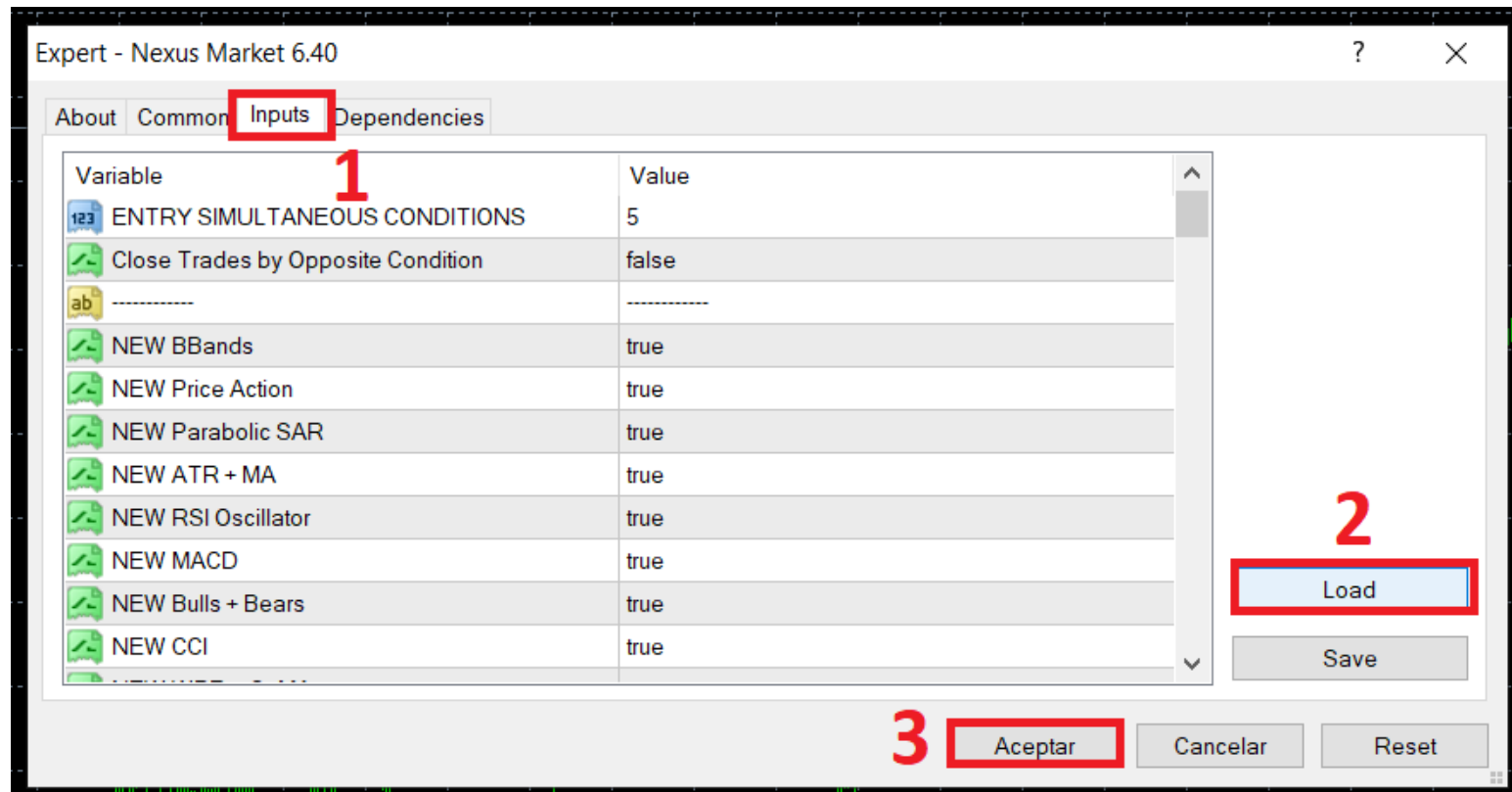
- **Second verification of Automatic Trading**

Once you add NEXUS to the chart, and before clicking accept, the Expert Advisor settings will open, where you will need to enable automatic trading for the last time. This process will only be done once, and should not be repeated more times



- **Load configuration sets**

You must load a configuration set before confirming the Expert Advisor on the chart. For that, click on load, and a folder with the previously downloaded sets will open. You can navigate between the folders to find where you have downloaded it. And now yes, once the set is loaded, it will accept NEXUS in the graph.



Note – The delivered sets have **magic numbers** different between them. No user intervention is necessary.

## **5. Basic description of the inputs and their operation:**

**"Entry Logics"** is a group of entries in NEXUS that control the market entry logic. The variable **"Entry Simultaneous Conditions"** determines the minimum number of simultaneous signals needed to open a position. The variable **"Close Trades by Opposite Conditions"** It is a flag that indicates if the positions should be closed due to the opposite condition.

The inputs of the different **entry strategy** they are flags that activate or deactivate the corresponding input logic.

**The input group "Timeframes"** allows users to specify the time frame to be used in two different functions: technical analysis and price action analysis.

The first input, **"Technical Analysis Timeframe"**, allows you to specify the time frame to be used in technical analysis. The allowed values are the different temporalities offered by the platform.

The second input, **"Price Action Analysis Timeframe"**, allows you to specify the time frame to be used in the price action analysis. The allowed values are the same as for the previous input

**"Lot Size Strategy"** allows users to set the lot size strategy to be used in their trade. Allows you to specify the lot size strategy to use. **"Initial Lot"**, allows you to specify the initial lot size. This value must be a decimal number, for example, 0.01. **"Martingale Profit Multiplier"**, allows you to specify the Martingale gain factor. This value must be a decimal number, for example, 1.0. **"Martingale Loss Multiplier"**, allows you to specify the Martingale loss factor. This value must be a number or a decimal number, for example, 2.0. **"Loss Multiplier 3th-4th-5th"**, allows you to specify the loss factor for the third, fourth, and fifth operations. This value must be a decimal number, for example, 2.0. Example: if "Initial Lot" is 0.01 and **"Loss Multiplier 3th-4th-5th"** is 2.0, after a loss the lot size will be  $0.01 * 2.0 = 0.02$ . **"Max Trades"**, allows you to specify the maximum number of operations allowed. This value must be an integer, for example, 3. **"Close At Max Trades"**, It allows specify whether to close the operation when the maximum number of operations is reached. This value must be a boolean value, for example, true or false. **The two external inputs "Max trades for cycle activation" and "Min trades for grid activation"** allow you to specify the maximum and minimum number of operations for the activation of a cycle and a grid, respectively. These values must be integers, for example, 1.

**Filter Calendar** in NEXUS is a filter for the trading calendar that allows you to filter the days of the week allowed for trading. If activated "**Enable day of week filter?**" to "true", days allowed for trading can be set using the inputs "**Monday trading?**" to "**Sunday Trading?**", where "true" is an allowed day and "false" is a disallowed day. The option "**Day of week filter action**" defines the action to take in the event of a day not allowed for trading, which may be deactivating new cycles, deactivating orders or closing operations and not allowing new ones.

The group "**Filter Schedule Settings**" allows you to filter a range of hours allowed for trading if enabled "**Enable time of day filter?**" to "true". The range of hours is set with the inputs "**Time of the day (from hour)**" and "**Time of the day (from min)**" as start time and "**Time of the day (to hour)**" and "**Time of the day (to min)**" as end time. The option "**Time of the day filter action**" defines the action to take in the event of a day not allowed for trading, which may be deactivating new cycles, deactivating orders or closing operations and not allowing new ones.

The group "**Range of Week Filter**" allows you to filter a range of days and hours allowed for trading if enabled "**Enable range of week filter?**" to "true". The range is set with the inputs "**startTrading Day**", "**startTrading Hours**", and "**startTrading Minute**" as start and "**Finish Trading Day**", "**Finish Trading Hour**", and "**Finish Trading Minute**" as an end. The option "**Range of week filter action**" defines the action to take in the event of a day not allowed for trading, which may be deactivating new cycles, deactivating orders or closing operations and not allowing new ones.

The variable "**magic number**" is used to identify trades performed by the EA with a specific number. The EA comment can be defined with the input "**EA Comment**". The maximum amount of slippage and spread allowed can be defined with the inputs "**Max Slippage (Pips)**" and "**Max Spread(Pips)**", respectively. You can also enable or disable the Stop Loss function using the input "**Use Stop Loss?**", and define the value of Stop Loss with the input "**Stop Loss in the account currency**". Finally, the hedging mode can be chosen through the "HedgingMode" input, with the options "**Hedging Disabled**", "**Hedging Independent**" and "**Hedging Cooperative**".

In the settings group "**Take Profit**", users have the option to set the Take Profit metric in three different ways: TP\_MONEY, TP\_FIXED\_PIPS, or TP\_PERCENT\_ATR. If TP\_MONEY is chosen, the amount of money specified in "**Take Profit Money**" will be the profit target for each trade. If TP\_FIXED\_PIPS is chosen, the number of pips specified in "**Take Profit Pips**" will be the profit target for each trade. If TP\_PERCENT\_ATR is chosen, the percentage specified in "**TakeProfit ATR Percent**" will be applied to the calculated ATR to determine the profit target for each trade.

Also, users can specify the time frame and time period for ATR calculation in "**Take Profit ATR Time Frame**" and "**Take Profit ATR Period**", respectively.

Regarding the settings of "**Step Settings**", users have the ability to control the minimum distance between trades. The step type can be fixed in pips (STEP\_FIXED), based on ATR (STEP\_ATR) or based on standard deviation (STEP\_STDDEV). This type is specified in "**step type**". The initial value in pips for the step can be specified in "**Pips**". The relationship between the step and the volatility can be adjusted with "**ATR/StdDev Mult**". Finally, the relationship between the trend and the grid against can be established in "**Grid Contra/Trend Ratio**".

Three additional inputs are included that allow you to control and customize the functionality of the Expert Advisor. The first input is "**Show Info**", which determines whether or not to display an information panel in the user interface. This panel provides relevant information about the operation of the software. The second input, "**Visual Type**", allows the user to choose the type of display for the information. Options include a visual panel and a commentary representation with fewer resources. The third input, "**Show Cycle Button**", controls the presence of a button on the user interface that allows stopping the trade. When it turns red, the current cycle is closed and a new one is not opened. However, while the cycle is active, the button does not affect the operation of the software. This button can be useful for those who want to manually control the trade.

In it group named "**News Filter**". It is reported that the user must enter the address

**MT4 Version** → <http://calendar.fxstreet.com/>



**MT5 Version** → <https://nfs.faireconomy.media>

on the list of allowed websites. You need to add this link in the Tools/Options/Expert Advisors tab. The second input, "**NewsFilter**", controls whether or not the news filter is activated. If enabled, the following inputs will be used to filter trades during the release of important news.

The inputs "**Minutes Before News**" and "**Minutes After News**" they specify the number of minutes before and after a major news release in which operations will be disabled.

The last input, "**News Importance**", allows the user to choose the importance of the news to be filtered.

Options include different news tick points.

The main function of the input group "**recovery mode**" allow you to configure the recovery strategy. The main function is to protect profits and limit losses in case any of the open trades have a negative performance.

The user can enable or disable the Recovery Mode, and choose the way it is activated: by elapsed time or by number of open trades. In addition, additional parameters such as the number of hours to start recovery, the number of open trades required to activate it, and the size of trades can be set.

On trigger, a loss percentage can be set to determine when recovery is triggered. You can also choose the payback feature, which is based on the biggest winning and losing trades.

Nexus allows you to define take profit in terms of money, pips or ATR percentage. In addition, the size of the take profit can be adjusted to the Martingale strategy. Finally, weekly earnings can be enabled or disabled, and set the amount of weekly earnings to be protected.

The input group "**Risk Filter**" is used to control and mitigate the risks associated with trading operations in the market. This group includes several inputs that allow the user to specify how risks will be filtered. The main function of this group of inputs is to make sure that the operations of trading are done in a safe and controlled manner.

The first input, "**Enable Risk Filter?**", allows you to enable or disable the risk filter. This means that the user can choose whether or not to use the filter to control risks.

The next input, "**Risk Symbol**", specifies the symbol that will be used to calculate volatility and variance in the market. This symbol is crucial in determining whether a trade is safe or not.

The input "**RiskTimeFrame**" specifies the time frame that will be used to calculate volatility and deviation. This time frame is important as it allows the user to have a clearer and more accurate view of market trends.

"**Risk Volatility Period**" and "**Risk Deviation Period**" are inputs that specify the periods to be used to calculate volatility and deviation, respectively. These periods are crucial to ensure that the calculations are accurate and representative of the market.

"**Risk DeviationThreshold**" is an input that specifies the deviation threshold that will be used to filter risks. This threshold is important because it allows the user to set a safety line that must be met before performing any trading operation.

Finally, "**Risk Filter Action**" is an input that specifies the action to take if the deviation threshold is met. Options include disabling new cycles, disabling new trading orders, or disabling and closing existing trading orders. This action is important because it allows the user to decide how to react to a potential risk.

Nexus also includes "**Backtest\_GMT**" and "**Backtest\_DST**". "**Backtest\_GMT**" is used to define the GMT time zone of the backtesting data, while "**Backtest\_DST**" is to define the DST of the backtesting data. Finally, "**Reference Time GMT Live**" is to define the real-time reference time GMT time zone and "**Time Filters Check Period (Secs.)**" is to define the time period in seconds to check the time filters.

## **6. Considerations of a grid system: The three fundamental pillars**

- Take Profit: This is the target price of a trade at which it will be automatically closed for profit. If the Take Profit is increased, the potential profit on the trade increases, but it also increases the size of the loss if the price moves in the opposite direction.
- Step: It is the distance between the opening and closing prices of consecutive operations in the grid system. If the Step is increased, the number of open trades in the grid system is reduced, which reduces the amount of risk in the system, but also reduces the potential profit.
- Multiplier: This is a factor that increases the amount of money invested in each consecutive trade on the grid system. If the multiplier is increased, the profit potential increases, but the risk of the investment also increases.

**Therefore, modifying one of these three factors can affect the other two. For example, if you increase the Take Profit, you can reduce the Step or the multiplier to maintain the risk level. On the other hand, if you increase the Step, you can increase the Take Profit or reduce the multiplier to maintain the profit potential. It is important to find a balance between these factors to maximize the effectiveness of the grid system.**

## **7. NEXUS Upgrade Guide**

The NEXUS update is carried out with the aim of improving the efficiency, adaptability and performance of the product. To achieve this, the software is approached from four perspectives: bug fixing, code optimization, adaptation to market conditions, and set modification.

It is important to note that updates are always aimed at improving the product and it is recommended to update it with each new version. However, if you are comfortable with an older version, you can keep it on your terminal.

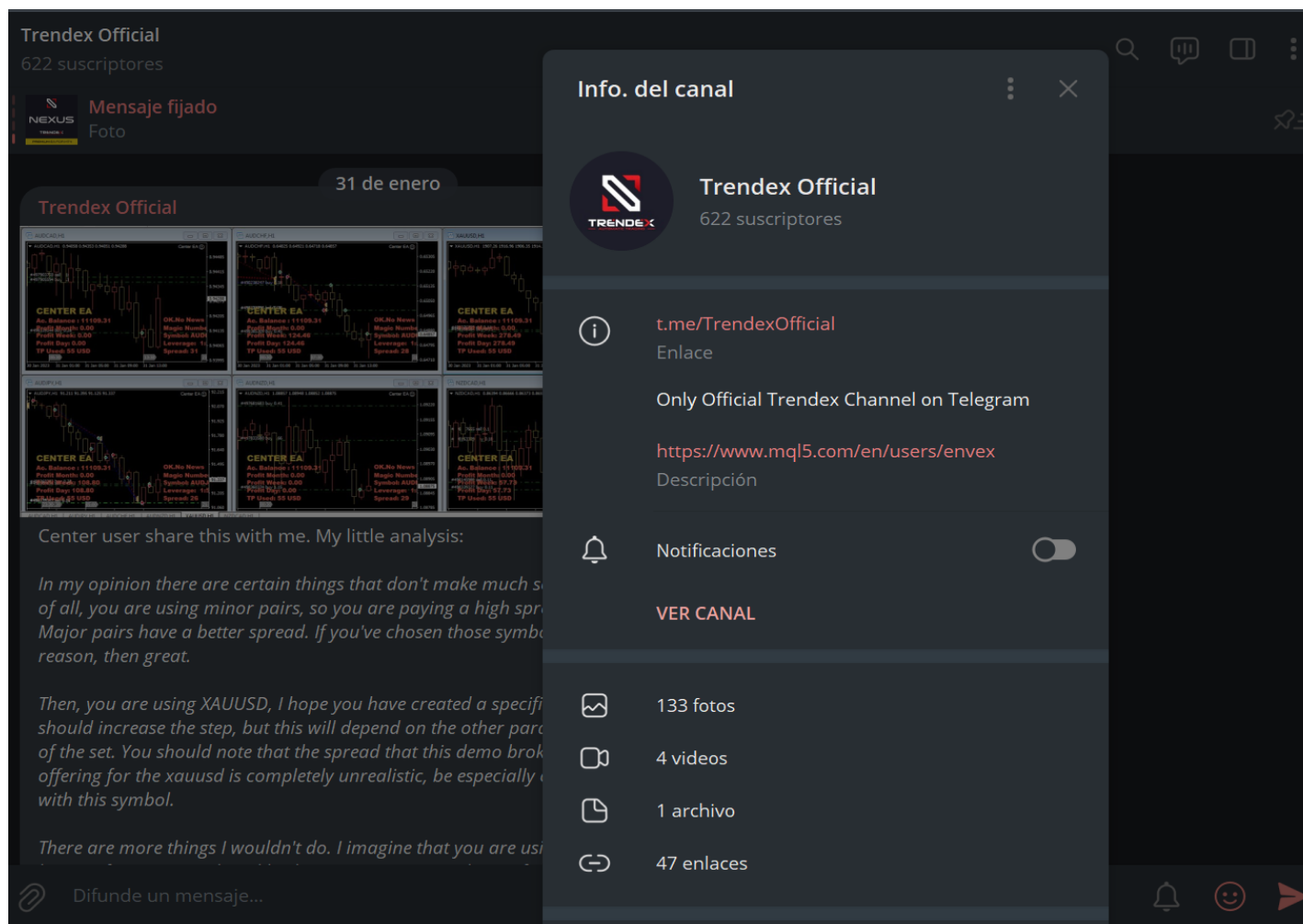
To update NEXUS, you must follow the following steps:

1. Stop the NEXUS synchronization with the VPS (if you are using it)
2. Close all current operations. You can use the "New Cycle" button by turning it red.
3. Close Metatrader, that will clear the temporary files.
4. Open Metatrader and access the terminal (Ctrl + T). Then go to the Market tab > Purchased > Update
5. Close Metatrader or refresh the browser (Ctrl + N), right click + Refresh. With this NEXUS will appear again in the list of Expert Advisors.
6. Open graphics and attach NEXUS, remember to load the sets you want to use.
7. If you are using VPS, remember to sync it again.

**Note:** It is important to note that some sets may not be compatible with later versions and the EA logic may be affected by the update. For this reason, it is recommended to only use the official sets distributed by Trendex. If you try to adapt a set from one version to another based on the visible parameters, the result may not be as expected.

## 8. Stay informed: TELEGRAM channel

**Trendex Official is our only Telegram channel**, where we publish interesting information for users. It is educational and informative in nature and can be found at: [t.me/TrendexOfficial](https://t.me/TrendexOfficial). **9. Some Recommended VPS**



A VPS (Virtual Private Server) is necessary for automated trading for several reasons:

- 1.Constant Uptime: A VPS provides a constant and reliable online connection for the trading software, which is essential to avoid system crashes and ensure fast and accurate execution of trading orders.
- 2.Security: A VPS isolates the trading software from potential security issues on the local computer, helping to protect assets and financial information.
- 3.Remote Control: A VPS allows remote access to the trading software from anywhere at any time, which is useful for traders who want to monitor their investments from a different location.
- 4.Hardware Resources: A VPS can offer more processing power and memory than a local computer, which is essential to ensure efficient and fast execution of the trading software.

**In summary, a VPS is an essential solution for automated trading as it provides a constant connection, security, remote access and adequate hardware resources to run the trading software efficiently and reliably.**

These are the VPS that we recommend:

1. MQL5 VPS: <https://www.mql5.com/en/vps>
2. CONTABO: <https://contabo.com/en/locations/europe/>
3. Hyonix: <https://hyonix.com/>

**Below you can see the prices:**

- MQL5 VPS: <https://www.mql5.com/en/vps>



## MetaTrader VPS

High-speed Forex VPS for MetaTrader 4 and MetaTrader 5

Specify your broker's server



Rent MetaTrader VPS

15 USD  
per month



### Trade 24/7 and earn more

The virtual platform runs smoothly around the clock, pays off due to better execution and increases your profit.



### Manage the service directly from the terminal

Create remote application copies directly from the trading platform. Launch trading robots or activate signal subscriptions in one click.



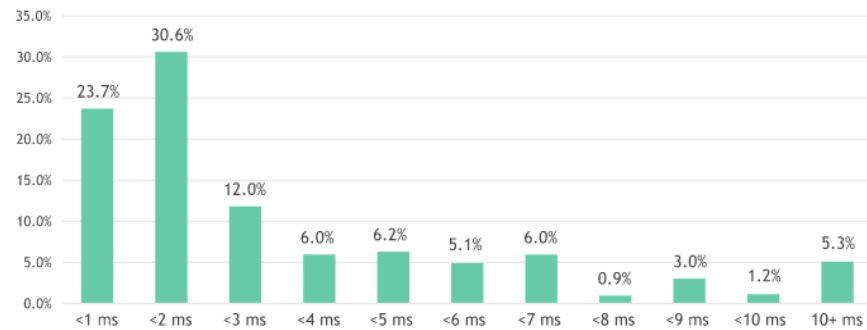
### Get the best execution of trades

Trade with minimal delays to broker servers and use your market opportunities to the greatest extent possible.


## Minimum ping to broker servers

We are constantly improving and modernizing our network in order to achieve the minimum ping. MetaTrader VPS currently provides the network latency less than 5 milliseconds for connections to 80% of brokerage servers.

Check VPS speed




- CONTABO: <https://contabo.com/en/locations/europe/>


 LOCATIONS

# Cloud VPS Proudly Hosted in Europe


Get VPS Instances or Dedicated Servers you want - for a price you'll love. Hosted in the heart of European Union.

 Cloud VPS

 Cloud VDS

 Bare Metal

<b>4 vCPU Cores</b>	8 GB RAM	50 GB NVMe or 200 GB SSD	1 Snapshot	32 TB Traffic Unlimited Incoming	<b>€5.99</b> / month	Select
★ Most Popular						
<b>6 vCPU Cores</b>	16 GB RAM	100 GB NVMe or 400 GB SSD	2 Snapshots	32 TB Traffic Unlimited Incoming	<b>€10.49</b> / month	Select
<b>8 vCPU Cores</b>	30 GB RAM	200 GB NVMe or 800 GB SSD	3 Snapshots	32 TB Traffic Unlimited Incoming	<b>€17.49</b> / month	Select
<b>10 vCPU Cores</b>	60 GB RAM	400 GB NVMe or 1.6 TB SSD	4 Snapshots	32 TB Traffic Unlimited Incoming	<b>€31.49</b> / month	Select





- HYONIX:<https://hyonix.com/>

## HOW ABOUT PRICING?





Our pricing is simply prepared with 6 plans!

HYONIX-2GB	HYONIX-4GB	HYONIX-8GB	HYONIX-12GB
15% CHOSE THIS PLAN!	51% CHOSE THIS PLAN!	20% CHOSE THIS PLAN!	3% CHOSE THIS PLAN!
<b>\$6.5</b>	<b>\$12</b>	<b>\$24</b>	<b>\$36</b>
1 vCore	2 vCore	4 vCore	6 vCore
2 GB RAM	4 GB RAM	8 GB RAM	12 GB RAM
25 GB SSD	50 GB SSD	100 GB SSD	150 GB SSD
Unmetered Bandwidth	Unmetered Bandwidth	Unmetered Bandwidth	Unmetered Bandwidth
1 Gbps Network Speed	1 Gbps Network Speed	1 Gbps Network Speed	1 Gbps Network Speed
1 Dedicated IP	1 Dedicated IP	1 Dedicated IP	1 Dedicated IP
Licensed Windows	Licensed Windows	Licensed Windows	Licensed Windows
<a href="#">Sign Up</a>	<a href="#">Sign Up</a>	<a href="#">Sign Up</a>	<a href="#">Sign Up</a>

## 10. Recommended rokers

Although the choice of a brokerFactors such as the location of the user and the regulation of their country intervene, these are 4 brokers that we use in the TRENDX team. Added a 5th reputable broker for US residents

- **ICMarkets**
- **TickMill**
- **roboforex**
- **pepperstone**
- **oanda** is a good choice for United States citizens

	 <b>ICMarkets</b>	 <b>TICKMILL</b>	 <b>RoboForex</b>	 <b>pepperstone</b>
	<a href="#">VISIT THE BROKER</a>	<a href="#">VISIT THE BROKER</a>	<a href="#">VISIT THE BROKER</a>	<a href="#">VISIT THE BROKER</a>
	74-89% of retail investor accounts lose money	73% of retail investor accounts lose money	61.41% of retail investor accounts lose money	74-89% of retail traders lose money when trading CFDs
Is it regulated?	✓	✓	✓	✓
Non-EU leverage ?	500:1	500:1	2000:1	200:1
European Leverage ?	30:1	30:1	30:1	30:1
Australian Leverage ?	30:1	30:1	0	30:1

\*Although brokers have Leverage limitations depending on the regulation of the country of origin of the user,**it is possible in some cases to benefit from the regulation of another country and enjoy its advantages.**

## **11. Backtesting: Considerations and results**

We verify our systems with backtesting and live counts. The tests in the *Strategy Tester* they are made using the best quality data that is as close as possible to actual trading data.

Periods of 5 years are tested, although the system strategies are generated based on market inefficiencies of the last year (1).

Some of the main differences that can be found when testing a trading system in backtesting with respect to reality are:

1. **Spread:** The spread in a backtest can be different from the real spread, which can affect the profitability of the system.
2. **Glide:** Slippage is the difference between the expected price of a trade and the actual execution price. In a backtest, actual slippage cannot be taken into account.
3. **execution speed:** The execution speed in a backtest can be different from the actual execution speed, which can affect the profitability of the system.
4. **Market changes:** Market conditions can change from the time the backtest is performed to the time the system is run live.
5. **Historical facts:** The historical data set used in the backtest may be incomplete or inaccurate, which may affect the reliability of the results.

It is important to take these differences into account when evaluating the profitability of a trading system in backtesting.

Besides, **you should be aware that the news filter does not work in backtest**. Remember that it stops the Expert Advisor before and after important economic news is broken. Therefore, results will necessarily vary. That is why only sets that pass the tests without the news filter are selected.

Our team uses sophisticated simulation techniques **Monte Carlo** to consider a wide range of scenarios that

include small fluctuations in the prices of stockbrokers, providing us with greater security in the use of our system in a wide variety of brokers.

We have optimized our system for an analysis period of **5 years** and we use a variable spread that provides greater flexibility and adaptability in relation to the markets. In addition, we have developed the MT4 version 6.40 sets from the Metatrader 5 version, including a slight latency to simulate a realistic market.

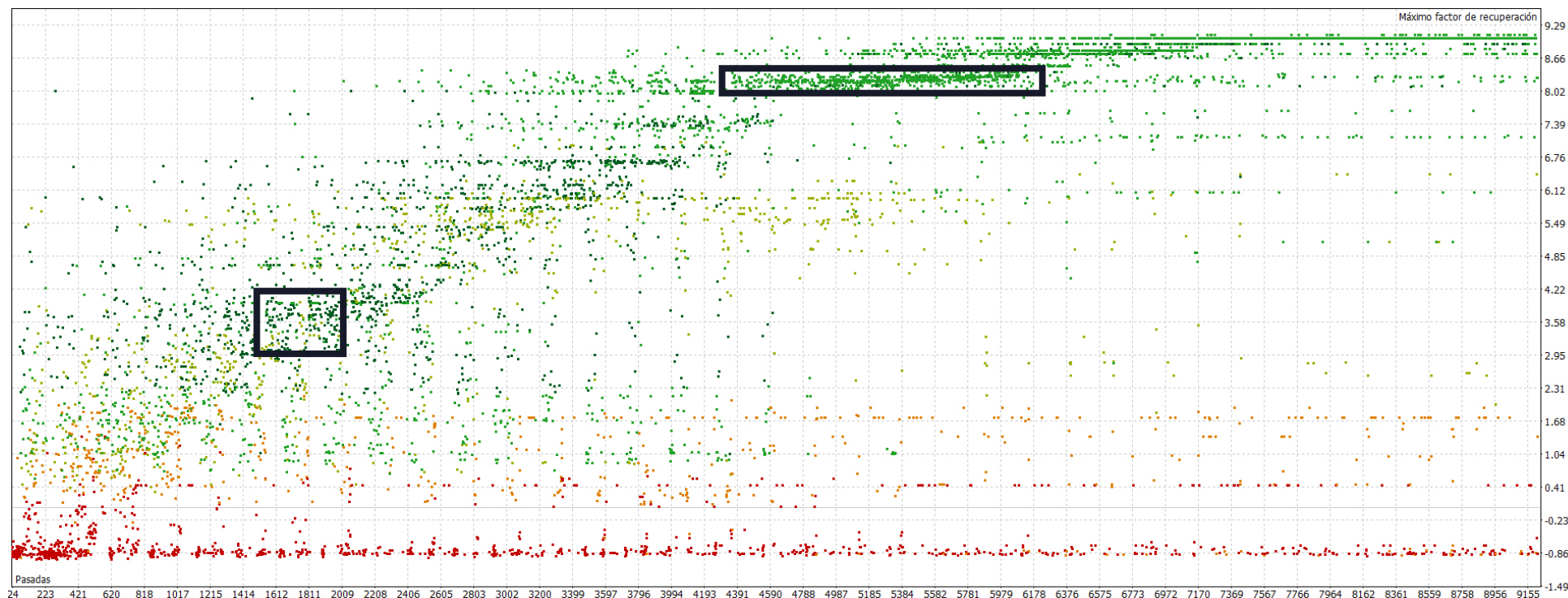
To guarantee the quality of the results, we use a rigorous filtering process that is based on the selection of sets taking into account:

1. **Recovery Factor**: which indicates an adequate recovery capacity in case of losses and an optimal risk-return ratio.
2. **Search for a K Ratio** is stable, which guarantees constant and effective risk management.

That is why, although the system can be used in symbols other than those proposed, they have not been selected, and only the sets that present the best results are offered.

**Those users who, due to the conditions of their broker, cannot use hedging, will be able to choose between the sets with Hedging Disable or Hedging Independent, but not Hedging Cooperative.**

In the creation of the sets we do not use over-optimization techniques, but we select the sets that are found in areas treasured by other sets of parameters that present similar results:

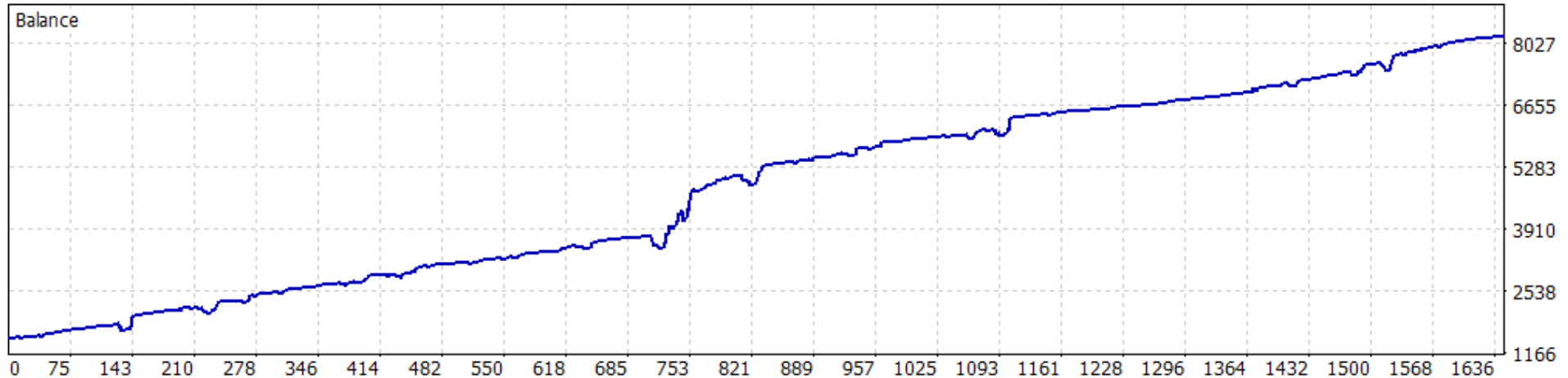


In order to simplify the process of selecting symbols and sets by the user, and that this is not a tedious process, limited scenarios of the best quality are proposed, which you can see below.

**We have 3 types of sets: “SMART” SETS, “WITHOUT MARTINGALE” SETS, “NEW SMART”:**

NEW SMART sets have been generated on the basis of their predecessors, but small adjustments have been made, and Recovery mode has been activated in those that allowed it. The backtests of these sets are for a period from the first week of 2021 to May 2023.

- SYMBOL: **EURUSD**TEMPORALITY: **M30**, SET NAME: "**NEXUS SMART M30 EURUSD**"
- PROFIT: **\$6,680.58**, DRAWDOWN: **23.99%** RECOVERY FACTOR:**6.34**
- RECOMMENDED MINIMUM BALANCE: **\$1000**,HEDGING: **INDEPENDENT**



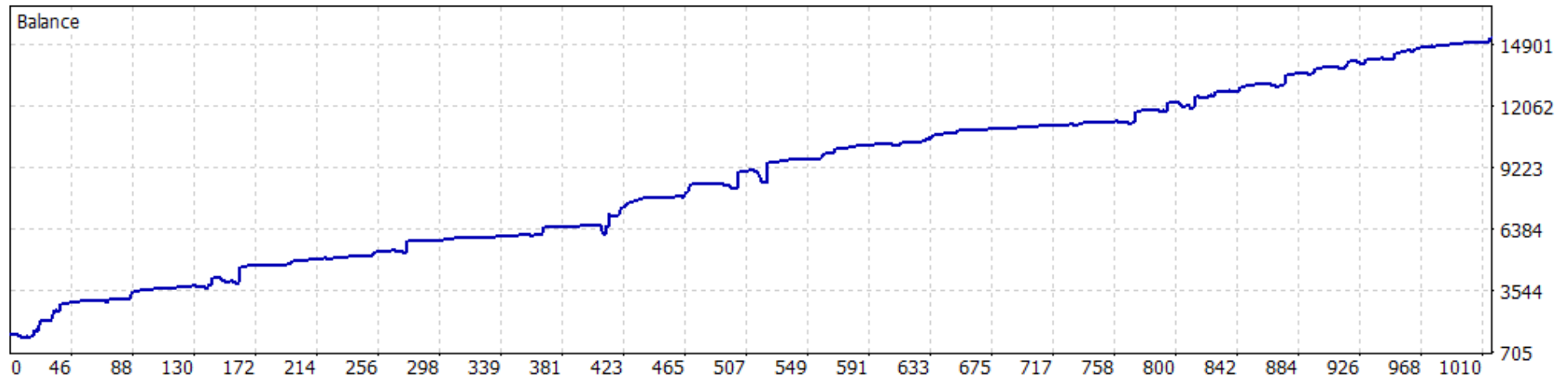
**Set note**–The SMART set needs 5 entry conditions to open the first trade. It uses Independent Hedging, so buy and sell cycles can be opened that will be closed separately. Since in this mode contra-condition closeouts do not work, the logical stop loss you use is based on the maximum number of open trades, which is set to 12.

The lot multiplier is more aggressive in the first 4 trades, and is set at 2.0, in the following trades it is softer, 1.4.

Both the Step and the Take Profit are defined in ATR, the first with a multiplier of 5 ATRs, and the Take Profit in 175% of the ATR of the M15 timeframe. The Trend/Grid Contra ratio is set at 2.5, so the trend for the grid is favoured.

There are no additional filters activated, so this set can have more buff range.

- SYMBOL:**GBPUSD**TEMPORALITY:**H1**, SET NAME: "**NEXUS SMART H1 GBPUSD**"
- PROFIT:**\$13,715.76**, DRAWDOWN:**20.48%** RECOVERY FACTOR:**7.31**
- RECOMMENDED MINIMUM BALANCE:**\$2000**,HEDGING:**INDEPENDENT**



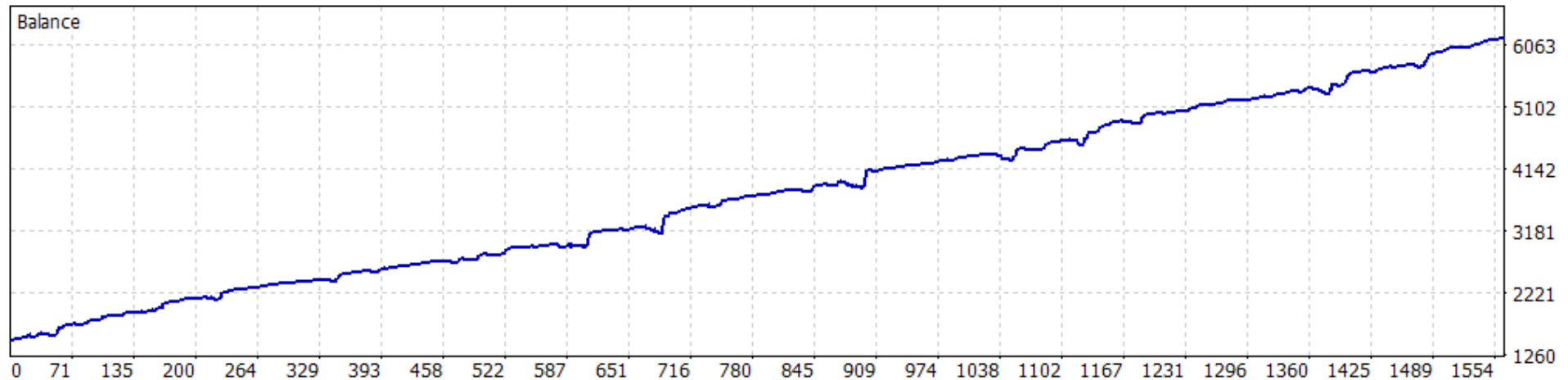
**set note**–*The SMART set needs 5 entry conditions to open the first trade. It uses Independent Hedging, so buy and sell cycles can be opened that will be closed separately.*

*The size of the lots increases from less to more, that is why the maximum number of operations has been limited to 10, which works as a stop loss.*

*Although the Step is small, and is established at 2 ATRs of 30 minutes, the trend/grid ratio against is high, with a value of 4.0, which should favor the trend and punish movements against this symbol, which is more volatile within of major forex pairs.*

*It has the volatility filter activated, taking the gold symbol as a reference. Use mode: disable trades.*

- SYMBOL:**USDCAD**TEMPORALITY:**M15**, SET NAME: "**NEXUS SMART M15 USDCAD**"
- PROFIT:**\$4666.71**, DRAWDOWN:**11.07%** RECOVERY FACTOR:**9.09**
- RECOMMENDED MINIMUM BALANCE:**\$750**,HEDGING:**INDEPENDENT**



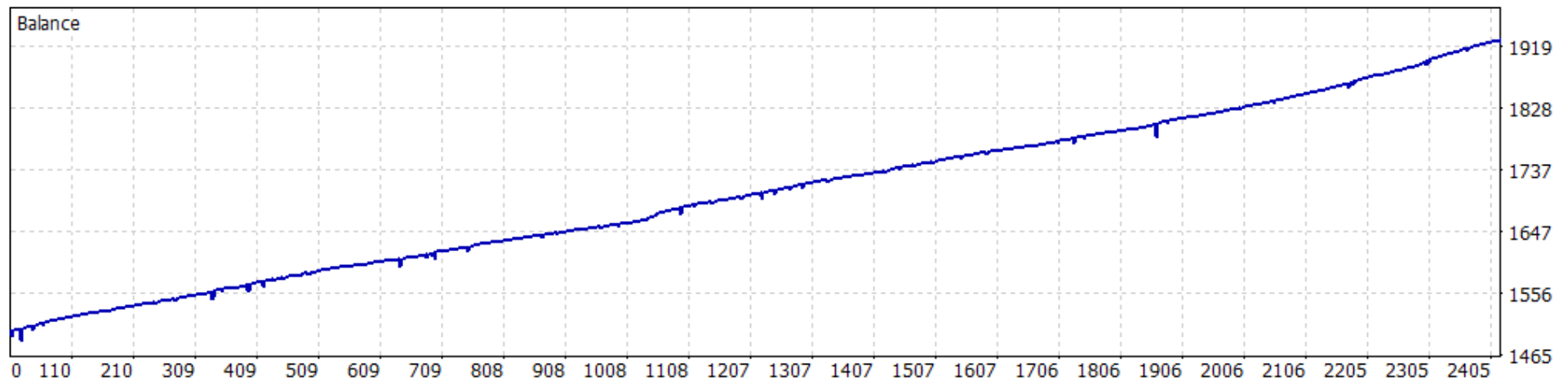
**set note**–The SMART set needs 5 entry conditions to open the first trade. It uses Independent Hedging, so buy and sell cycles can be opened that will be closed separately. This set has the number of maximum operations at 14, and at no time in the last 5 years has it needed this security SL

All its operation is based on the temporality of M15, which is where we find more inefficiencies for this symbol.

The balance growth curve is smooth, as a less aggressive multiplier of 1.4 is used than in other sets. The targets and steps are also established in ATR, as in all "SMART" sets, in this way, they adapt more homogeneously to different market scenarios.



- SYMBOL:**USDCHF**, TEMPORARY:**M30**,
- SET NAME: "**NEXUS SMART M30 USDCHF**"
- PROFIT:**\$425**, DRAWDOWN:**3.06%**
- RECOVERY FACTOR:**6.56**
- RECOMMENDED MINIMUM BALANCE:**\$200**,
- HEDGING:**DISABLE**

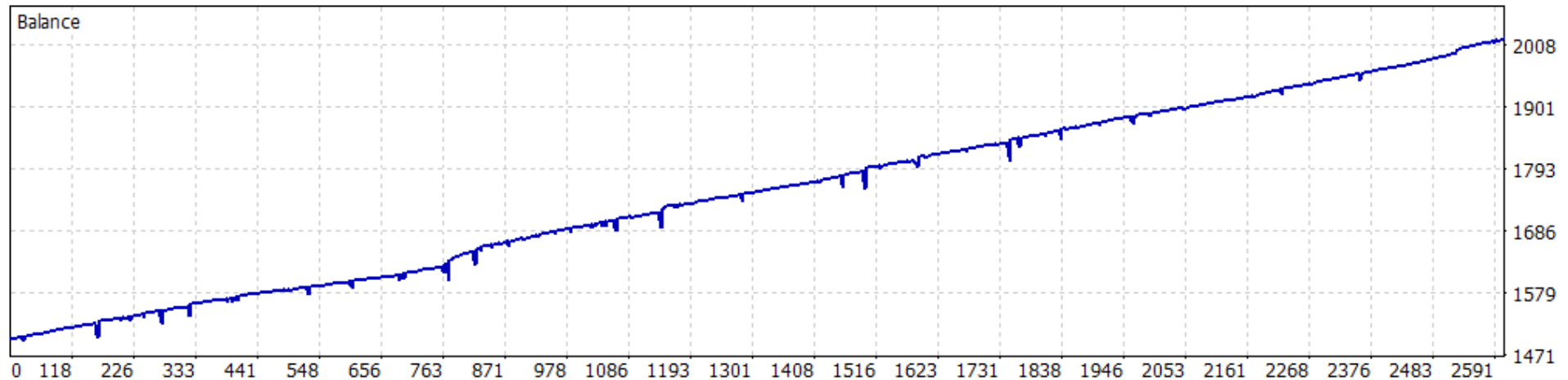


**set note**–The SMART set for USDCHF is different from the rest. Due to the characteristics of the symbol, a very small Take Profit has been established, of only 25% of an ATR of 15 minutes.

*That is why the profit is very low if we use microlots (0.01), but the lotage can increase. As stated in the set features, it can be run even with only \$200*

*This set does not use any type of Hedging.*

- SYMBOL:**NZDUSD**TEMPORALITY:**M30**, SET NAME: "**NEXUS SMART M30 NZDUSD**"
- PROFIT:**\$520.37**, DRAWDOWN:**5.84%** RECOVERY FACTOR:**5.47**
- RECOMMENDED MINIMUM BALANCE:**\$400**,HEDGING:**INDEPENDENT**



**set note**–The SMART set needs 5 entry conditions to open the first trade. It uses Independent Hedging, so buy and sell cycles can be opened that will be closed separately.

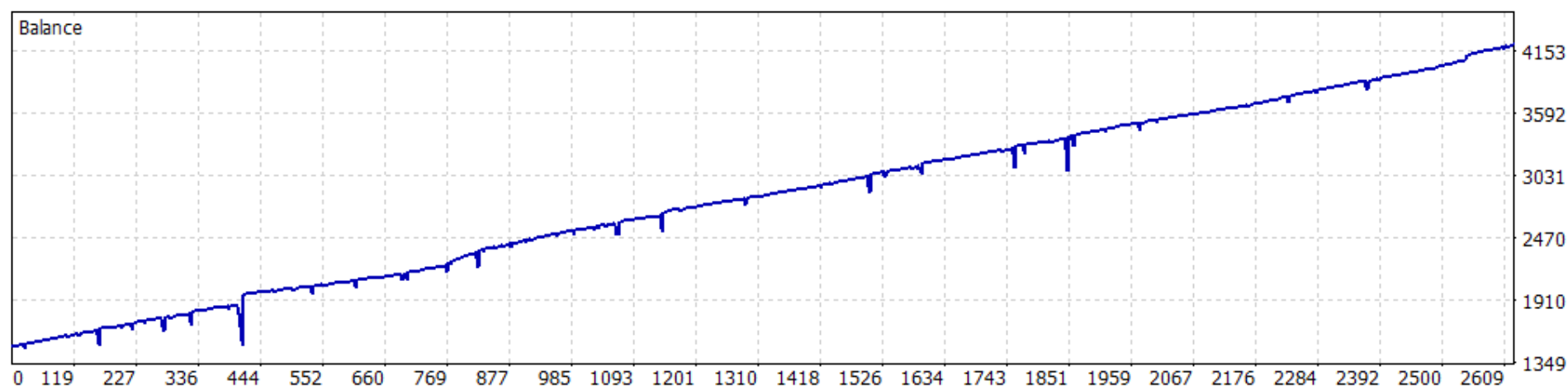
*It works on the M30 timeframe, and it has lot multipliers compensated with the maximum number of operations, which has been set at 10. It has very small Take Profit, calculated from the 15-minute ATR, of which it only takes 25 %. That is why if in your broker this symbol has a very high spread, it may not be a good set. If you do backtesting, you'll need to make sure you have good quality data to get a true-to-life result.*

*The profits are small, but the ratio to recovery factor is high, so you can use a larger lot size depending on your capital.*

For illustrative purposes, we have uploaded **Initial Lot at 0.05**, that is to say 5 times more than what was established in the original set.

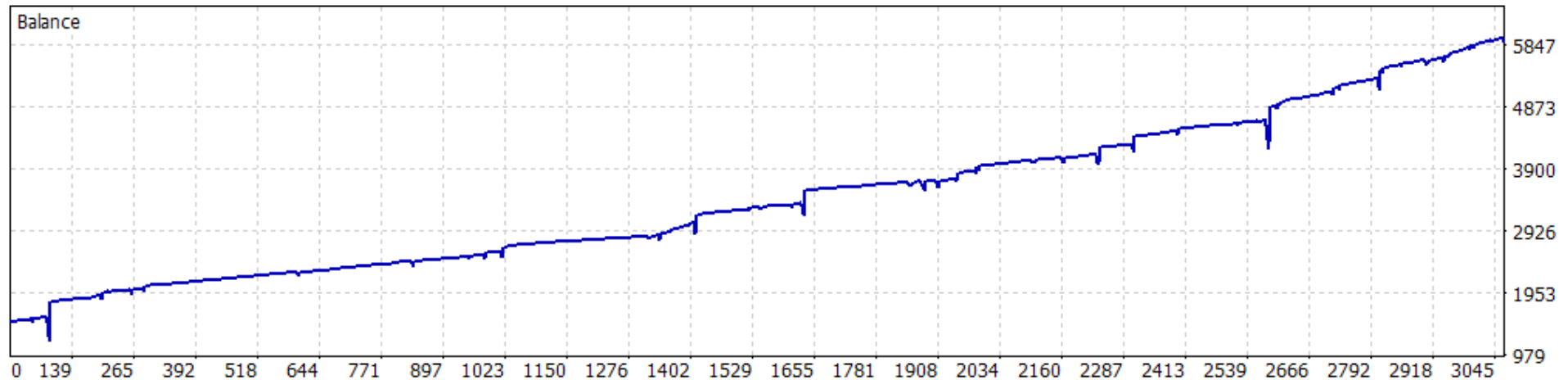
The SMART sets use values defined by the ATR, so to increase the ratio between the lot and the Take Profit you do not need to modify anything else, except for the lotage.

This has been the result for the **NZDUSD**:



*Remember to manage risk based on your capital. And always within the limits in which you feel comfortable. In this example, the Profit is multiplied by 5 from the original set, but so is the Drawdown.*

- SYMBOL:**USDJPY**TEMPORALITY:**M15**, SET NAME: "**NEXUS SMART M15 USDJPY**"
- PROFIT:**\$4401.07**, DRAWDOWN:**65.31%** RECOVERY FACTOR:**3.95**
- RECOMMENDED MINIMUM BALANCE:**\$1500**,HEDGING:**COOPERATIVE**



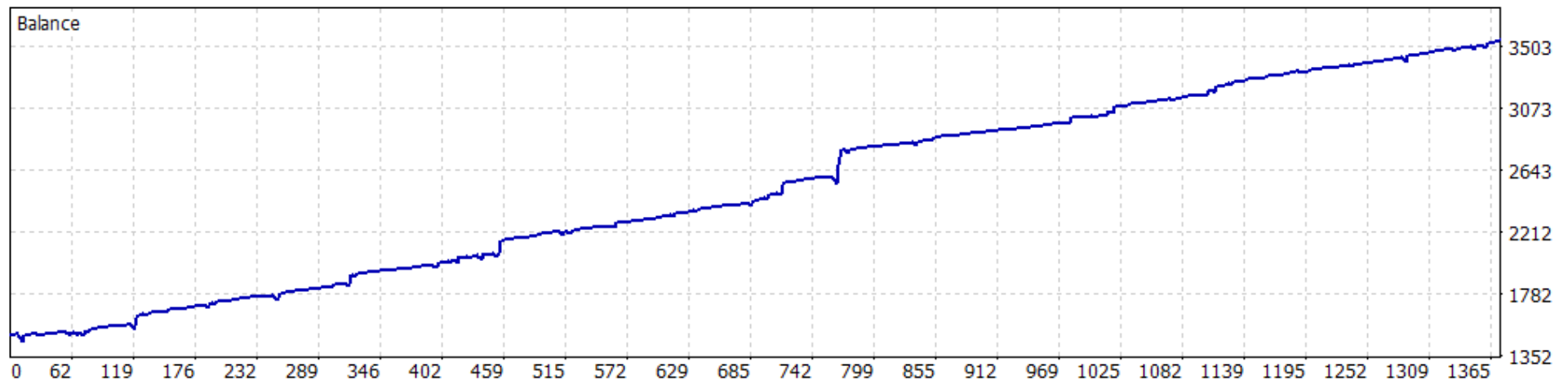
**set note**–The USDJPY is a very volatile symbol, which also only has 3 digits.

*That is why in this set we have selected a Cooperative Hedging that will use the gains and losses of the buy and sell trades to average a profit, which has been established based on the 15-minute ATR indicator with a value of 100%.*

*Since co-op coverage is used, the trend/contra ratio of 1.0 has been set to be as symmetrical as possible in this regard. And the distance of the grid has been set to 3. The M15 temporality is used precisely because it is a volatile symbol, we do not want to be late for the trend change.*

*This set should be used with more caution than the rest, which is why the volatility filter has also been activated.*

- SYMBOL:**AUDCAD**TEMPORALITY:**M30**,
- SET NAME: "**NEXUS SMART M30 AUDCAD**"
- PROFIT:**\$2051**, DRAWDOWN:**9.65%**
- RECOVERY FACTOR:**10.74**
- RECOMMENDED MINIMUM BALANCE:**\$500**,HEDGING:**DISABLED**

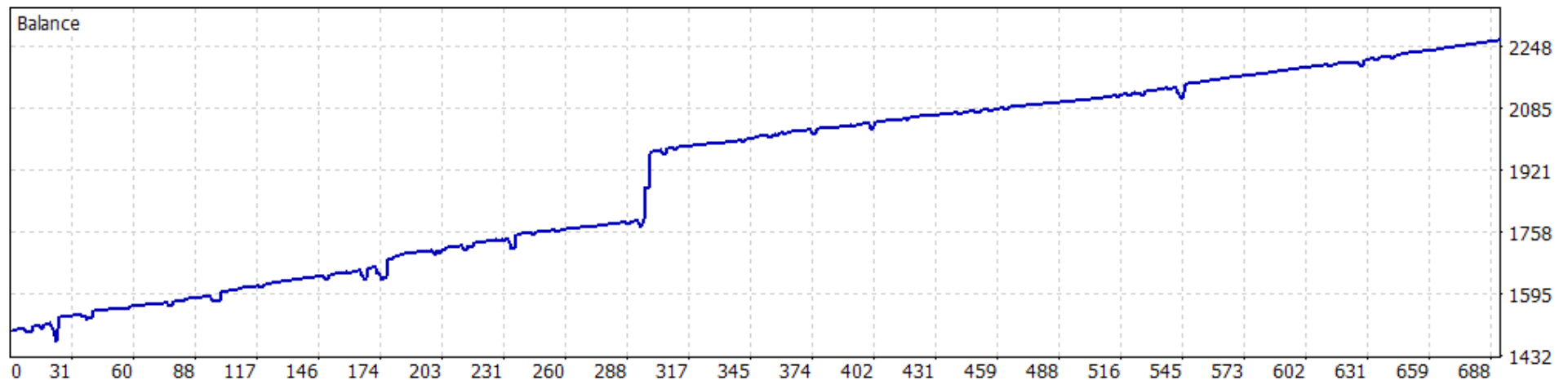


**set note**–This set is very similar to "**NEXUS SMART M30 EURUSD**".It has been generated using similar logic. The results obtained are different, since the symbol is also different. It is a plus side symbol. Also, brokers usually charge a slightly higher spread against the eurUSD.

Also the multiplier has been reduced, leaving values of 1.6 and 1.4, softer than other sets.

The maximum number of open trades is 12. This set does not use hedging.

- SYMBOL:**GBPCHF**TEMPORALITY:**H1**,
- SET NAME: "**NEXUS SMART H1 GBPCHF**"
- PROFIT:**\$766**, DRAWDOWN:**7.99%**
- RECOVERY FACTOR:**5.80**
- RECOMMENDED MINIMUM BALANCE:**\$300**,HEDGING:**INDEPENDENT**



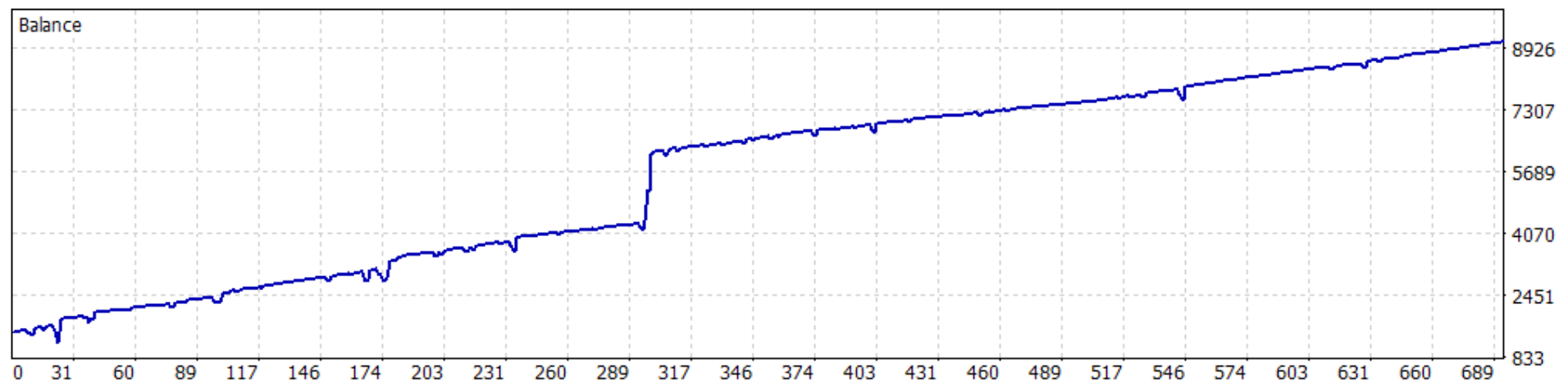
**set note**–This set may seem more aggressive than others, as it uses a fixed lot multiplier of 1.8, but it is limited to 10 trades. Here is your starting point. It uses Independent Hedging and has the volatility filter, based on the XAUUSD activated in the disable trades mode.

*It is a very tight set that does not require a high balance. It does not open many operations, and the ones it does open are usually closed early. Please note, this is a minor symbol, and may be subject to a higher spread than others at your broker.*

For illustrative purposes, we have uploaded **Initial Lot to 0.1**, that is, 10 times more than what was established in the original set.

The SMART sets use values defined by the ATR, so to increase the ratio between the lot and the Take Profit you do not need to modify anything else, except for the lotage.

This has been the result for the **GBPCHF**:



*Remember to manage risk based on your capital. And always within the limits in which you feel comfortable. In this example, the Profit is multiplied by 10 compared to the original set, but so is the Drawdown, exceeding \$1000.*

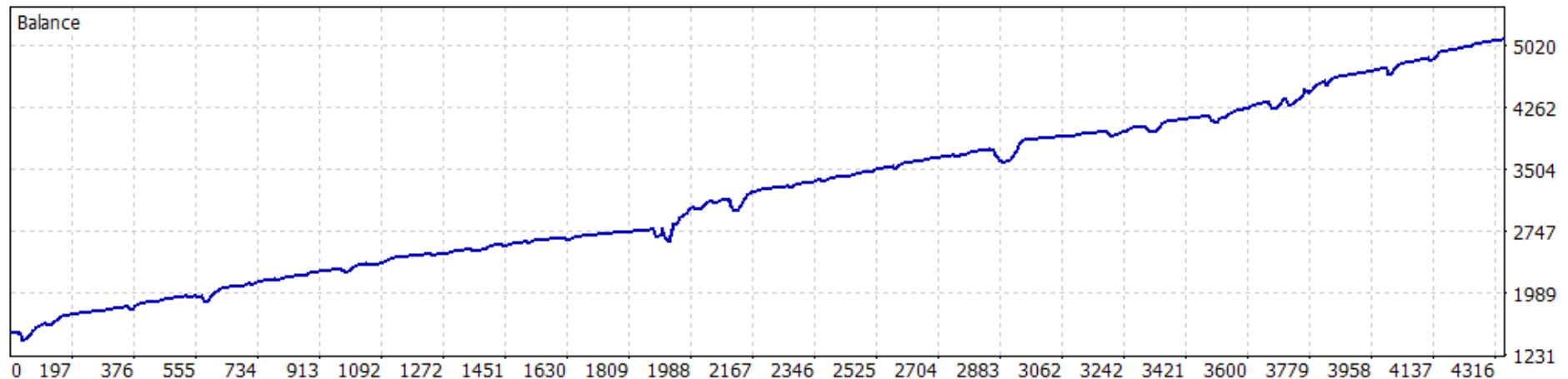
## **SETS WITHOUT MARTINGALE**

These sets have been created at the express request of some NEXUS users.

Not using a martingale is not necessarily safer, since as the entry price moves away, a larger pullback is needed to recover losses. **In general, operations can become held longer before closing the cycle**

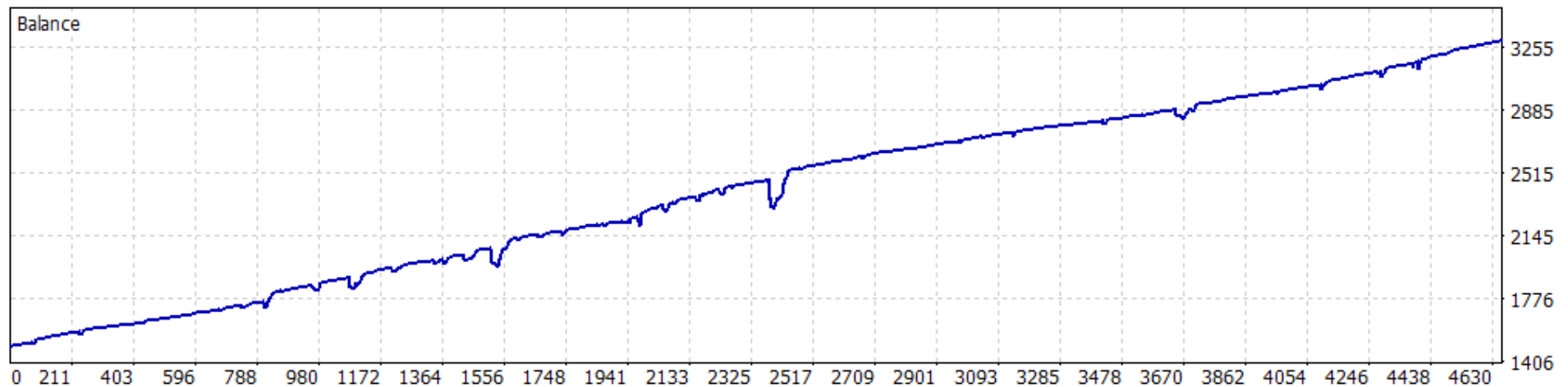
However, these sets have the advantage of having more linear risk. Below are some sets without the martingale. As with SMART sets, you can modify the lot, and since Take Profit is defined in ATRs, you won't have to modify anything other than Initial Lot.

- SYMBOL:**EURUSD**TEMPORALITY:**H1**,
- SET NAME: "**NEXUS NOMARTIN H1 EURUSD**"
- PROFIT:**\$3605**, DRAWDOWN:**28.71%**
- RECOVERY FACTOR:**3.56**
- RECOMMENDED MINIMUM BALANCE:**\$1000**,HEDGING:**INDEPENDENT**

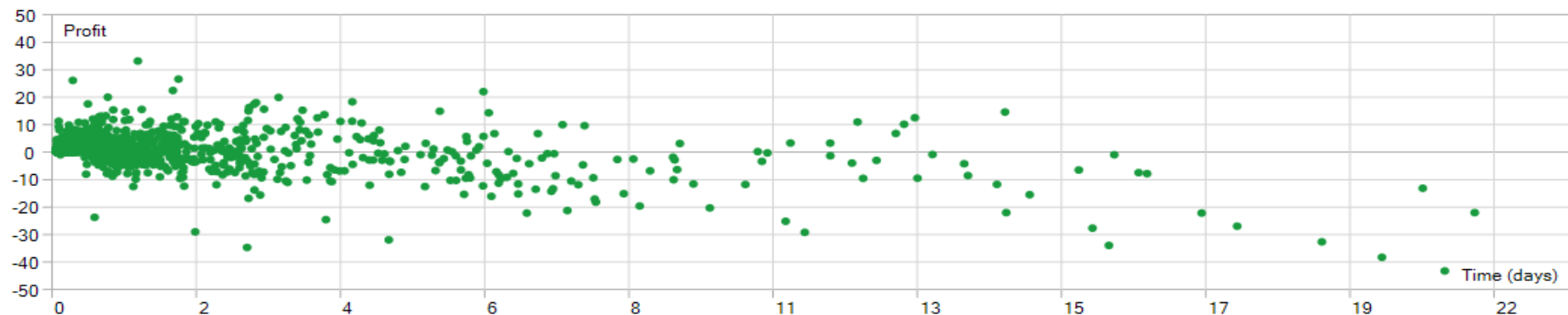




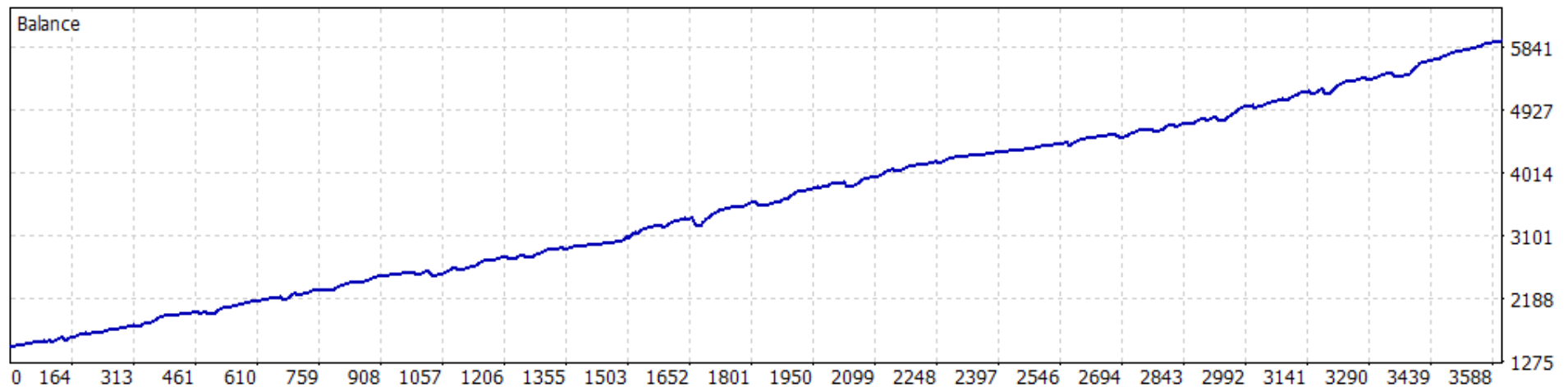
- SYMBOL:**GBPUSD**TEMPORALITY:**H1**, SET NAME: "**NEXUS NOMARTIN H1 GBPUSD**"
- PROFIT:**\$1796**, DRAWDOWN:**21.59%**,RECOVERY FACTOR:**3.36**
- RECOMMENDED MINIMUM BALANCE: **\$1000**,HEDGING: **COOPERATIVE**



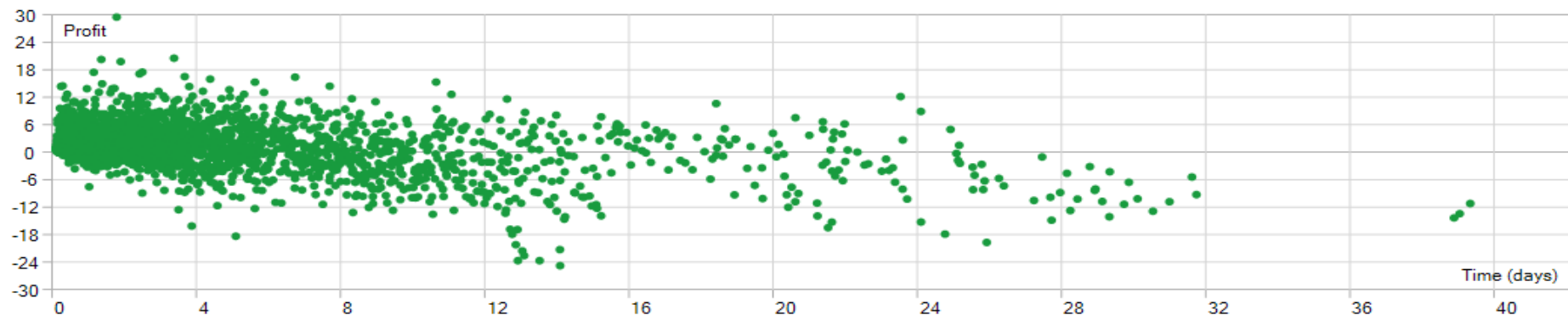
In the image below you can see that some positions get to be held until **22 days**. Although it is not common, most of them are retained for a maximum of 2 days



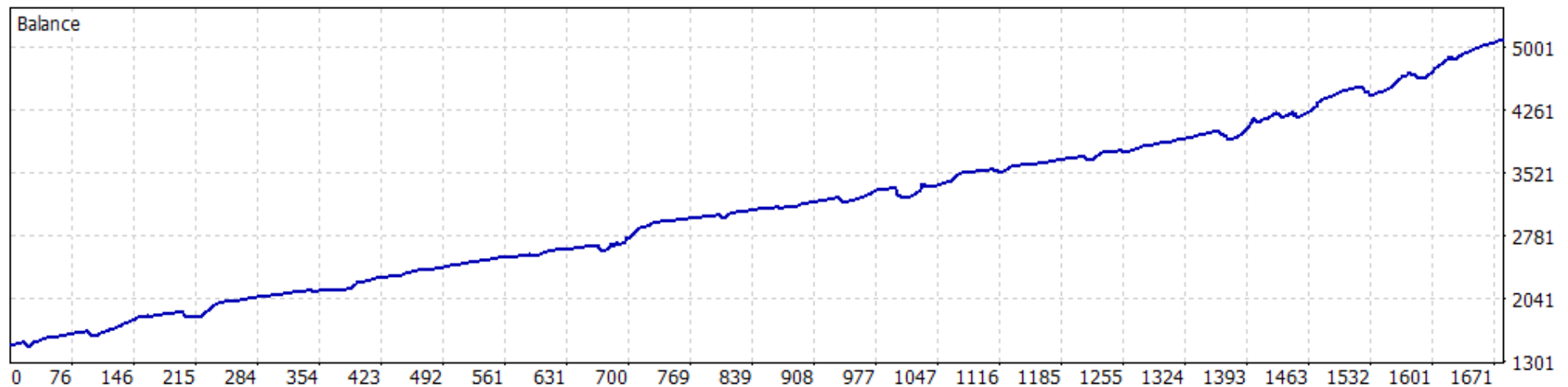
- SYMBOL:**USDCAD**TEMPORALITY:**M15**, SET NAME: "**NEXUS NOMARTIN M15 USDCAD**"
- PROFIT:**\$4443**, DRAWDOWN:**14.92%**,RECOVERY FACTOR:**7.52**
- RECOMMENDED MINIMUM BALANCE: **\$1000**,HEDGING: **INDEPENDENT**



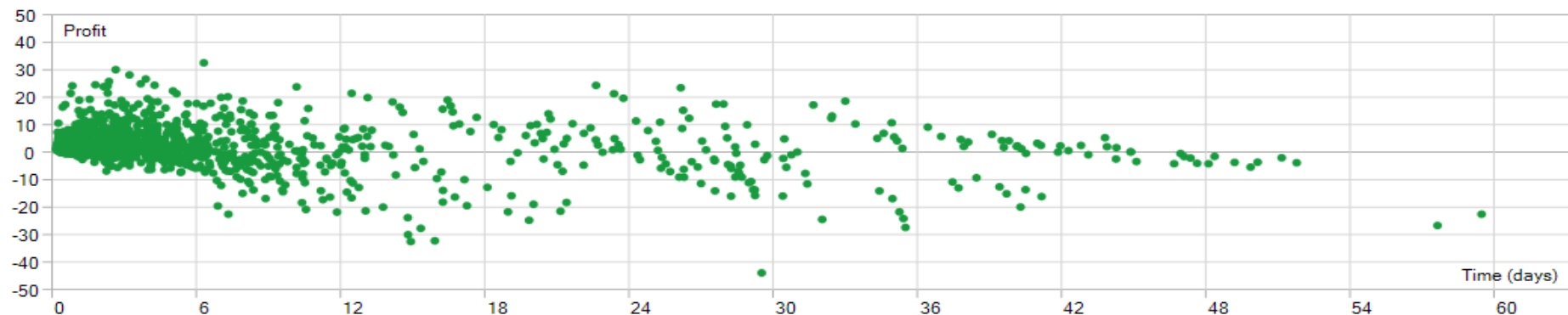
In the image below you can see that some positions get to be held until **40 days**. Although it is not common, and it remains an anecdotal episode. Most of them are retained for a maximum of 2 to 4 days.



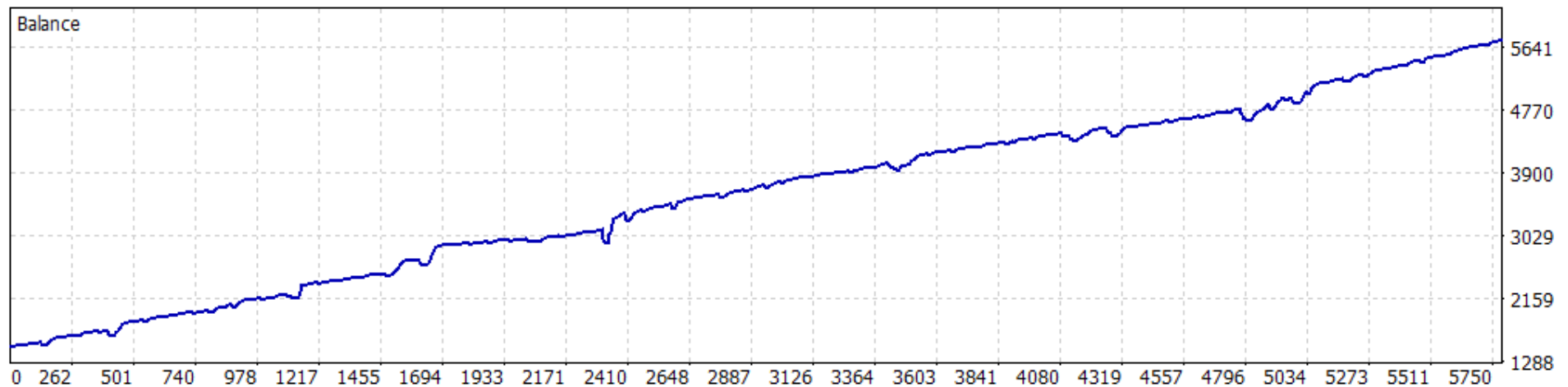
- SYMBOL:**USDCHF**TEMPORALITY:**H1**, SET NAME: "**NEXUS NOMARTIN H1 USDCHF**"
- PROFIT:**\$3578**, DRAWDOWN:**30.22%**,RECOVERY FACTOR:**4.68**
- RECOMMENDED MINIMUM BALANCE: **\$1000**,HEDGING: **INDEPENDENT**



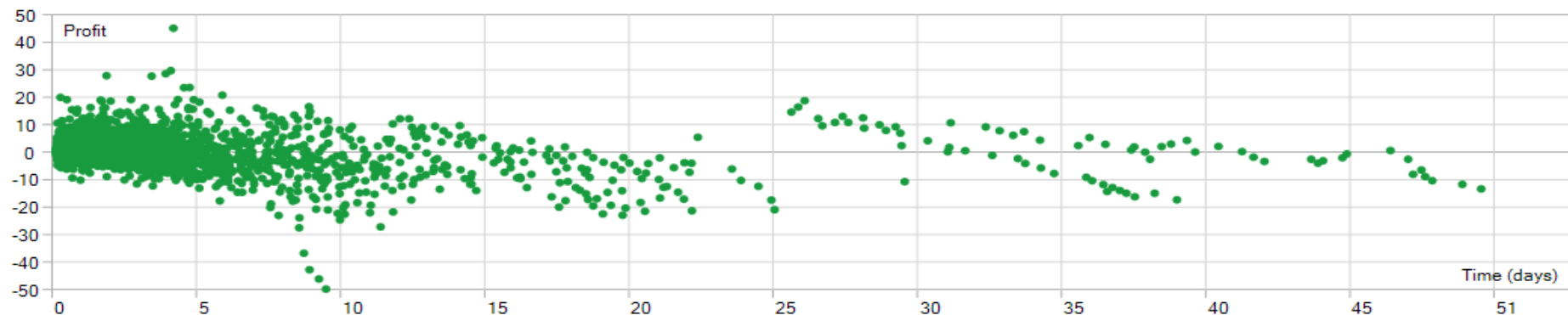
In the image below you can see that some positions get to be held until **60 days**. Although it is not common, and it remains an anecdotal episode. Most of them are retained for a maximum of 2 to 6 days.



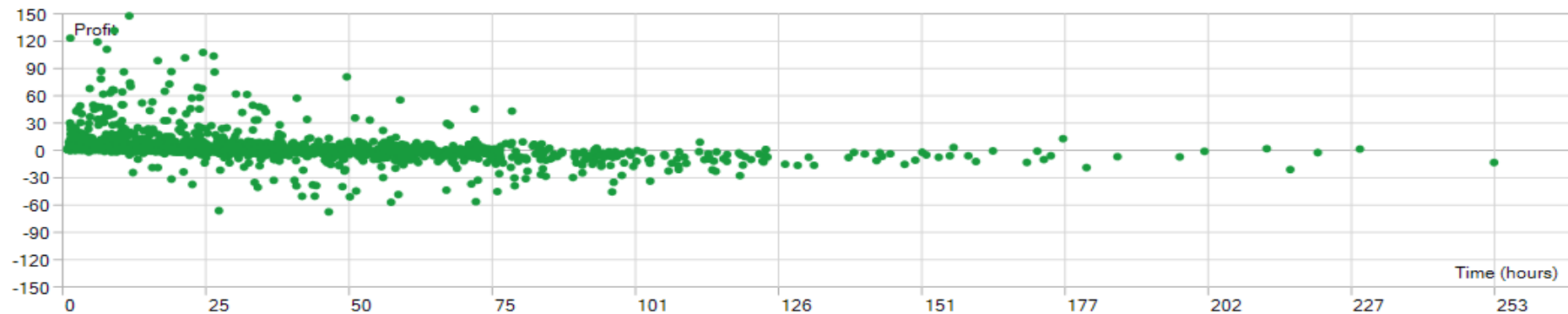
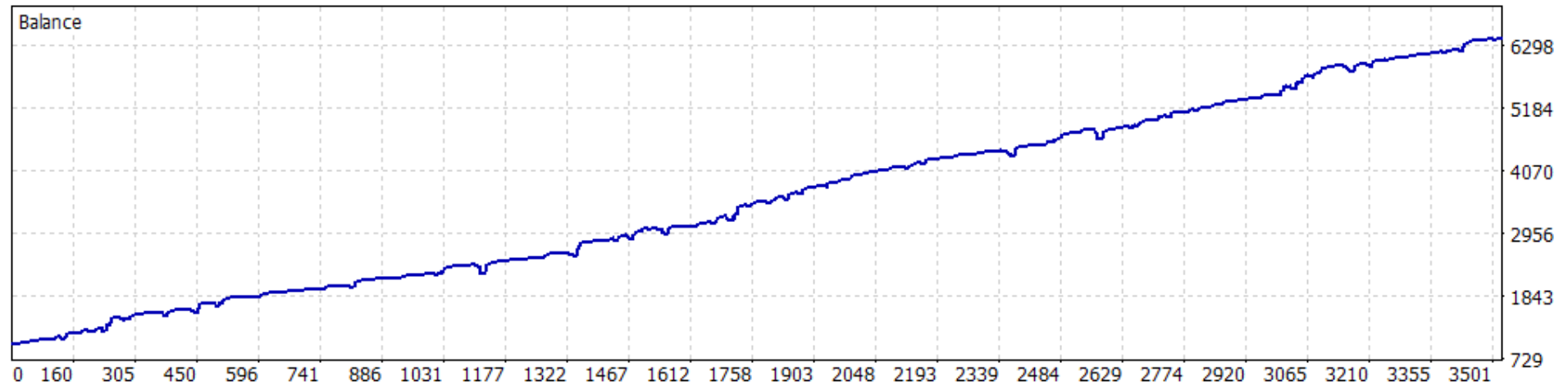
- SYMBOL:**AUDUSD**TEMPORALITY:**M15**, SET NAME: "**NEXUS NOMARTIN M15 AUDUSD**"
- PROFIT:**\$4238**, DRAWDOWN:**62.98%**,RECOVERY FACTOR:**3.01**
- RECOMMENDED MINIMUM BALANCE: **\$2000**,HEDGING: **COOPERATIVE**



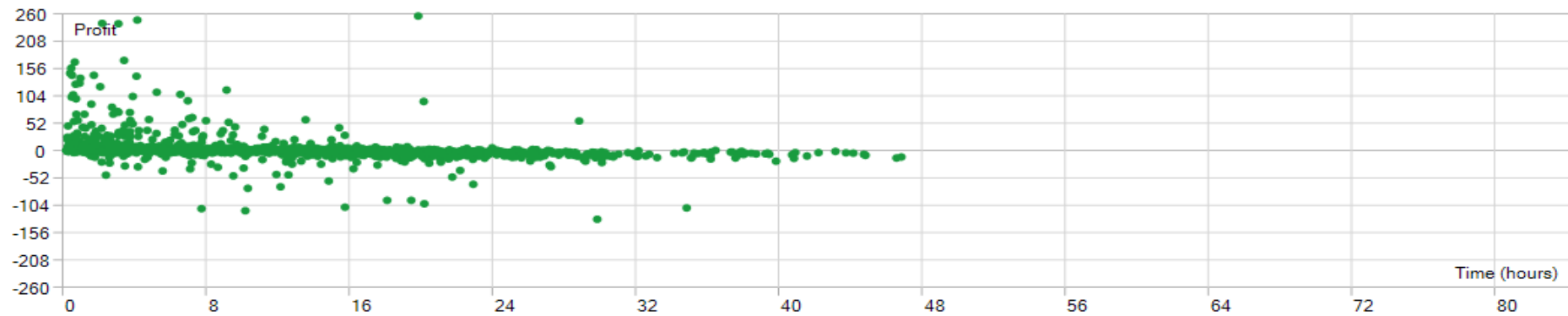
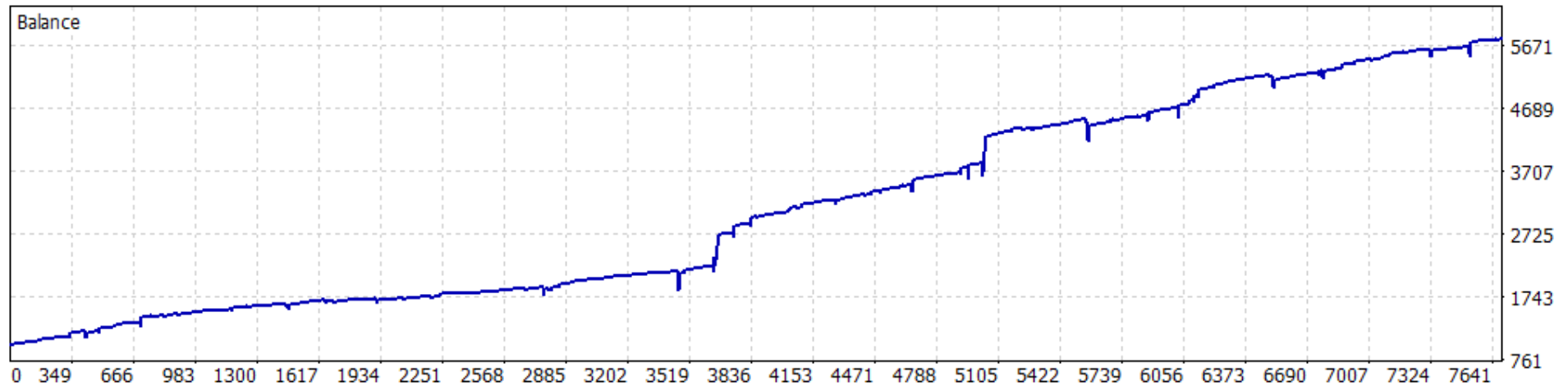
This is the position retention map, the horizontal axis indicates the time in days. The vertical axis Profit from operations.



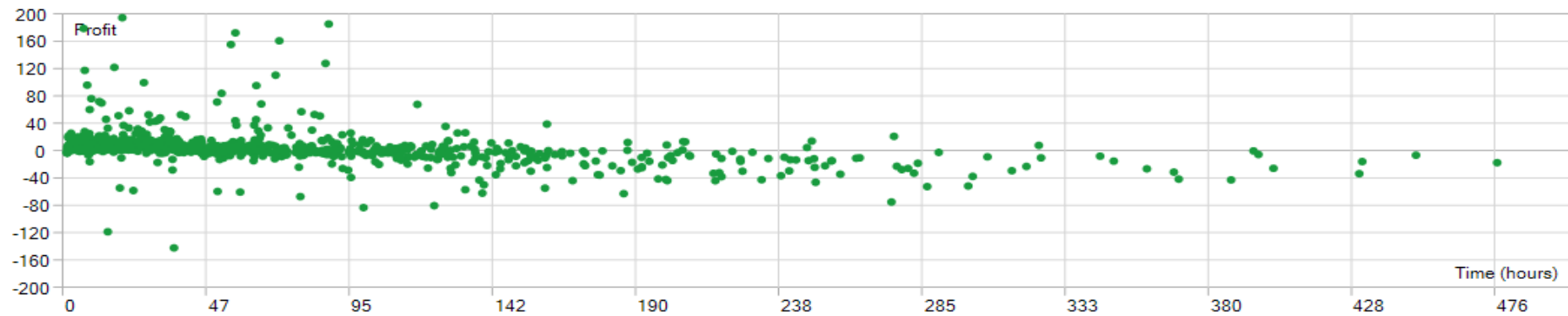
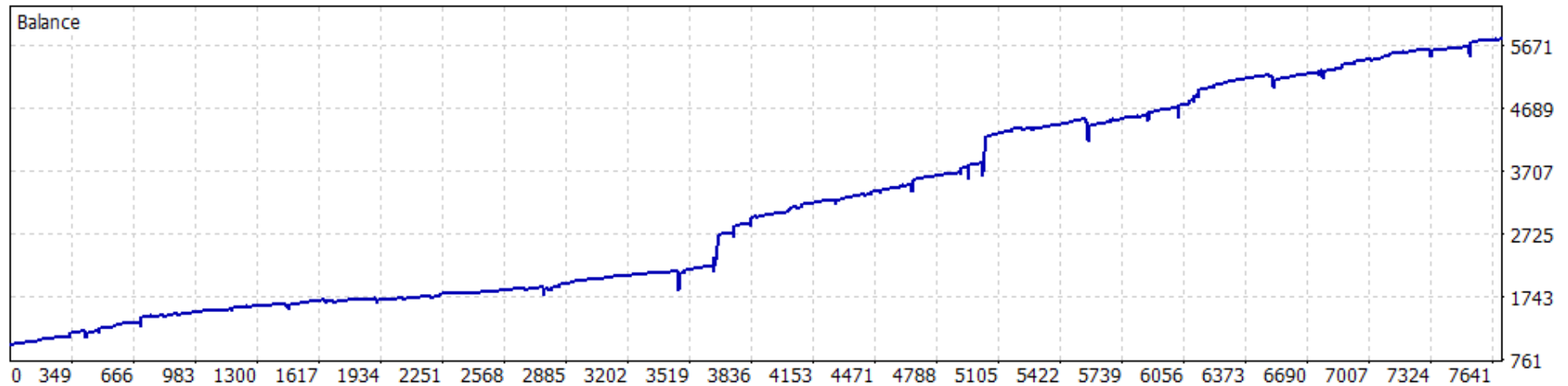
- SYMBOL:**AUDCAD**TEMPORALITY:**H1**, SET NAME: "**NEXUS NEW SMART H1 AUDCAD**"
- PROFIT:**\$5414**, GROWTH:**441%**, DRAWDOWN:**17.32%**,RECOVERY FACTOR:**12.84**
- INITIAL BALANCE OF THE TRIAL: **\$1000**,HEDGING: **INDEPENDENT**



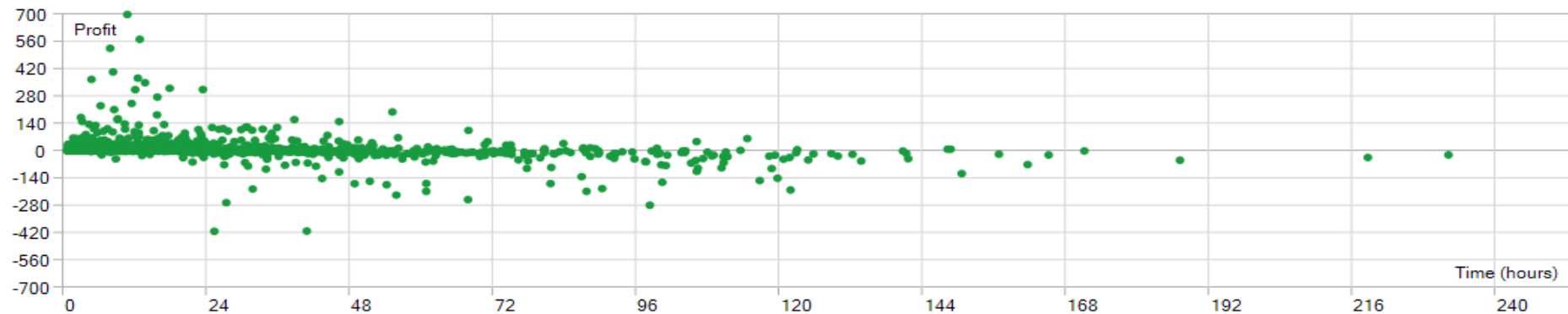
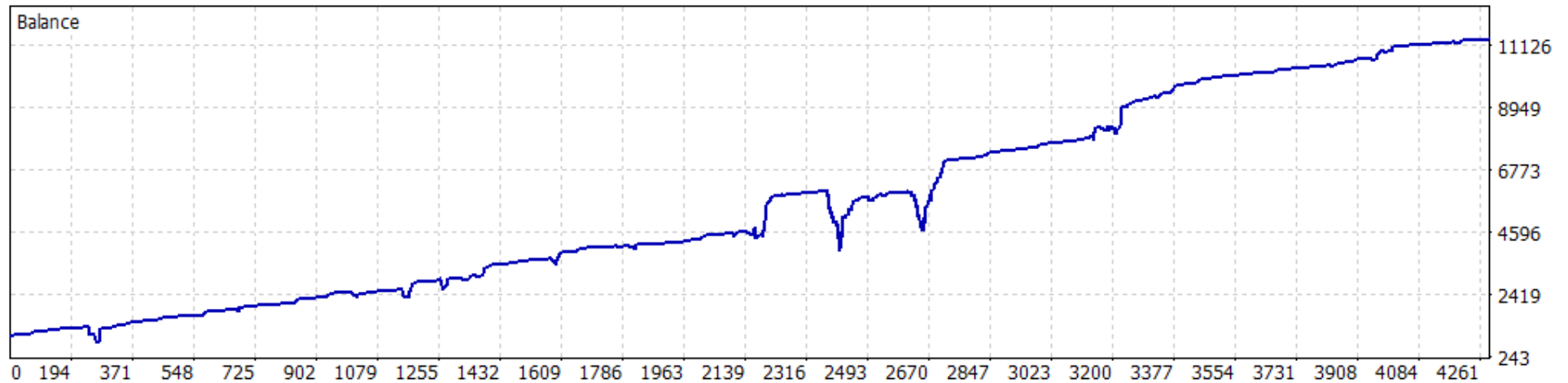
- SYMBOL:**EURUSD**TEMPORALITY:**H1**, SET NAME: "**NEXUS NEW SMART H1 EURUSD**"
- PROFIT:**\$4781**, GROWTH:**378%**,DRAWDOWN:**46.33%**,RECOVERY FACTOR:**4.80**
- INITIAL BALANCE OF THE TRIAL: **\$1000**,HEDGING: **COOPERATIVE**



- SYMBOL:**GBPCHF**TEMPORALITY:**M30**, SET NAME: "**NEXUS NEW SMART M30 GBPCHF**"
- PROFIT:**\$2863**,GROWTH:**186%**,DRAWDOWN:**30.56%**,RECOVERY FACTOR:**2.76**
- INITIAL BALANCE OF THE TRIAL: **\$1000**,HEDGING: **INDEPENDENT**

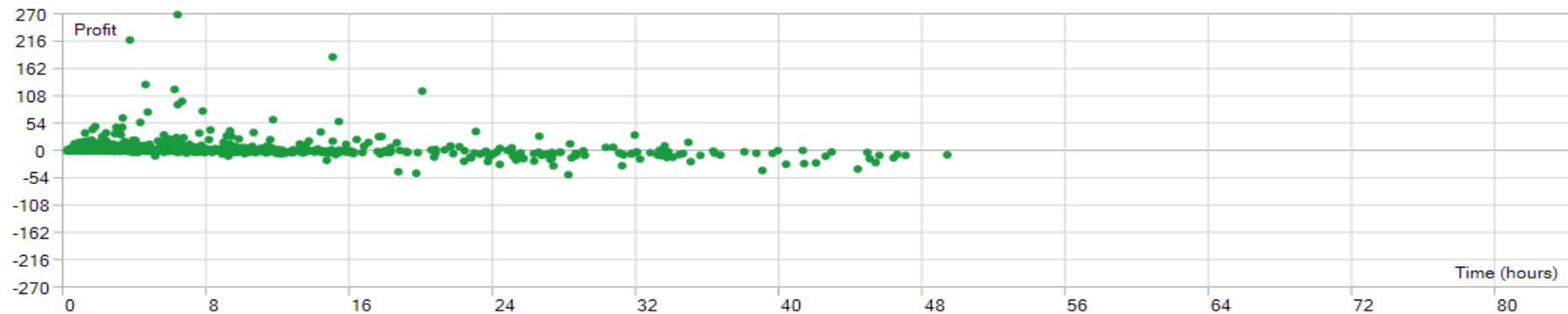
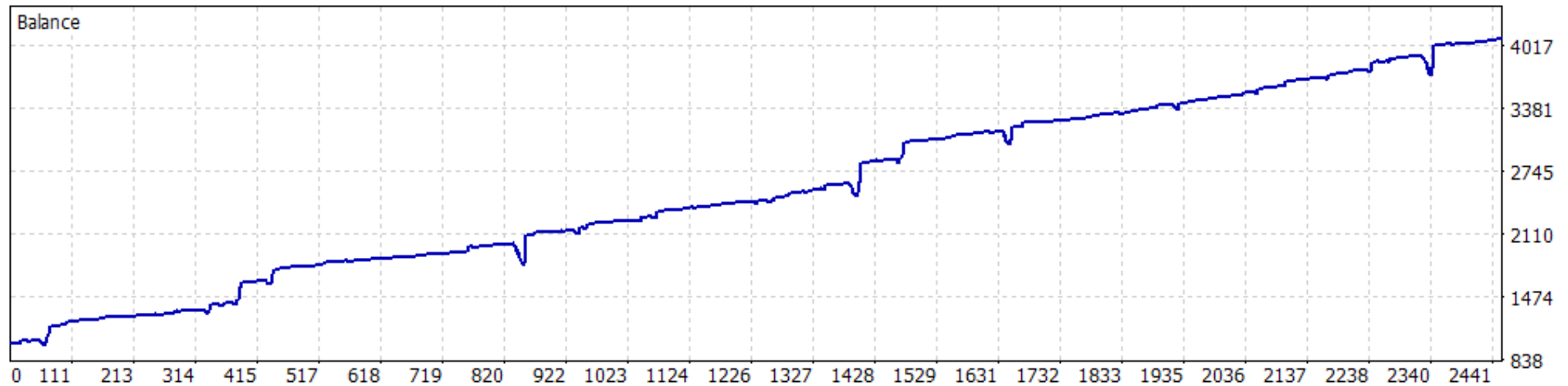


- SYMBOL:**GBPUSD**TEMPORALITY:**M30**, SET NAME: "**NEXUS NEW SMART M30 GBPUSD**"
- PROFIT:**\$10,372**,GROWTH:**937%**,DRAWDOWN:**52.97%**,RECOVERY FACTOR:**3.24**
- INITIAL BALANCE OF THE TRIAL: **\$1000**,HEDGING: **INDEPENDENT**

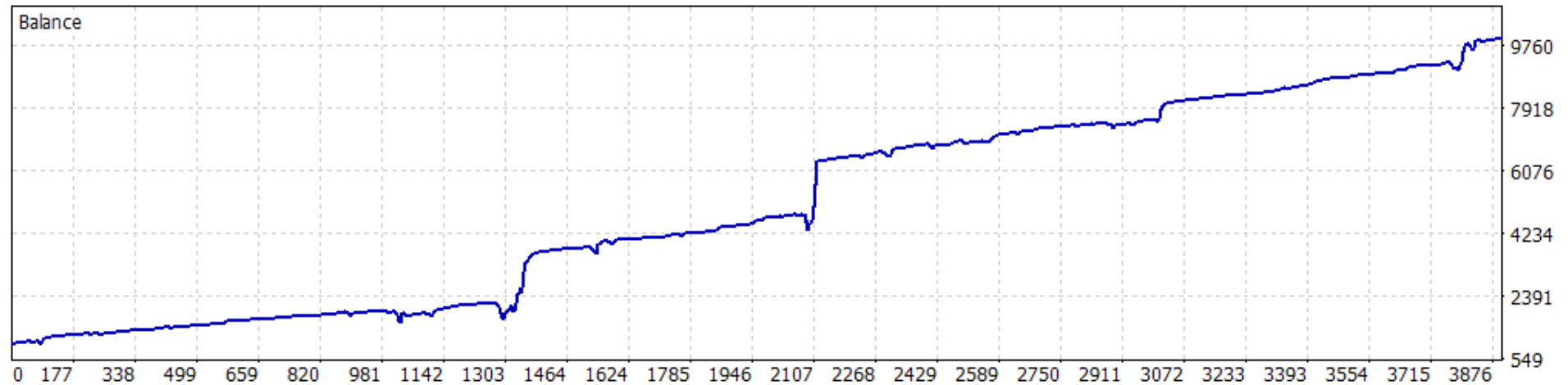




- SYMBOL:**NZDUSD**TEMPORALITY:**H1**, SET NAME: "**NEXUS NEW SMART H1 GBPUSD**"
- PROFIT:**\$4703**,GROWTH:**370%**,DRAWDOWN:**34.94%**,RECOVERY FACTOR:**3.07**
- INITIAL BALANCE OF THE TRIAL: **\$1000**,HEDGING: **INDEPENDENT**

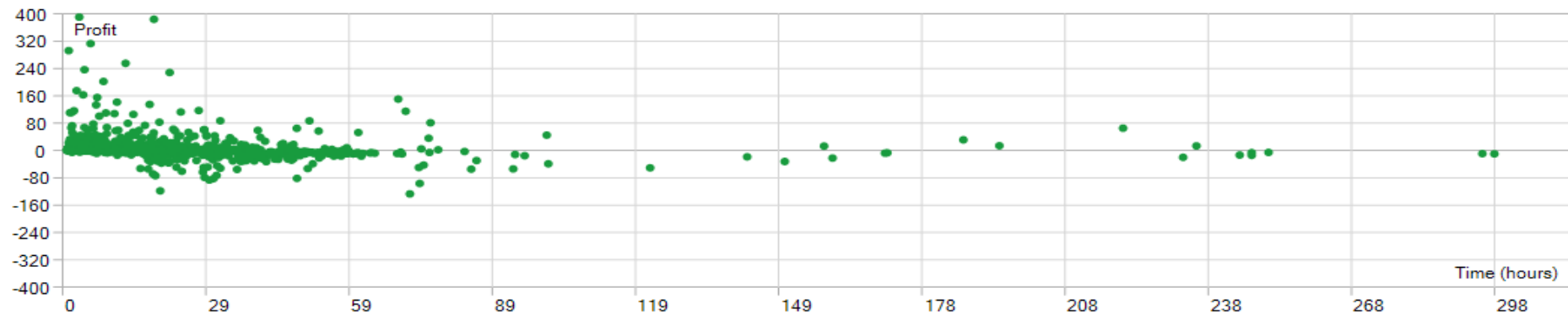


- SYMBOL:**USDCAD**TEMPORALITY:**H1**, SET NAME: "**NEXUS NEW SMART H1 USDCAD**"
- PROFIT:**\$8968**,GROWTH:**796%**,DRAWDOWN:**43.46%**,RECOVERY FACTOR:**4.09**
- INITIAL BALANCE OF THE TRIAL: **\$1000**,HEDGING: **DISABLED**

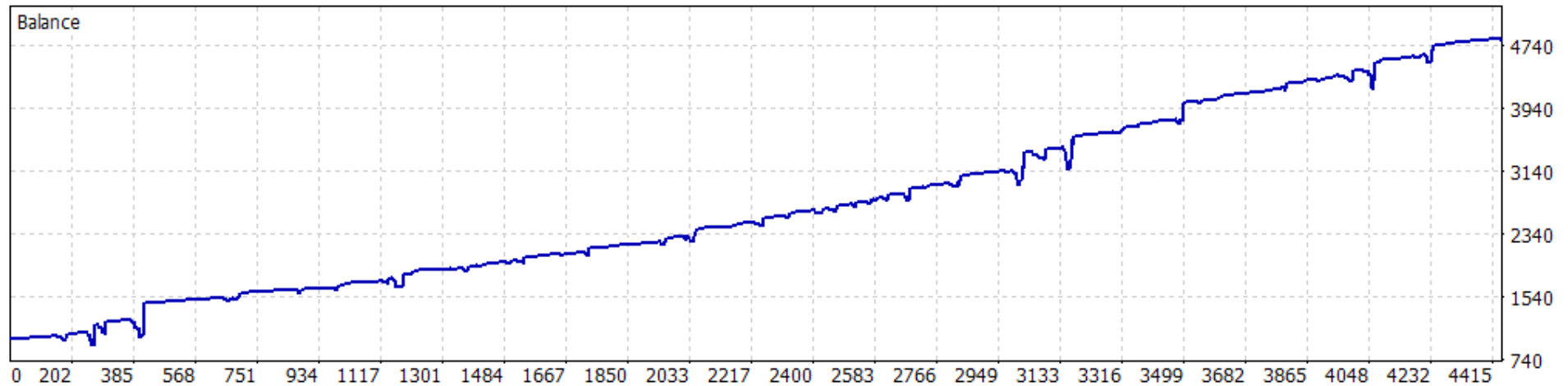


- 
- 

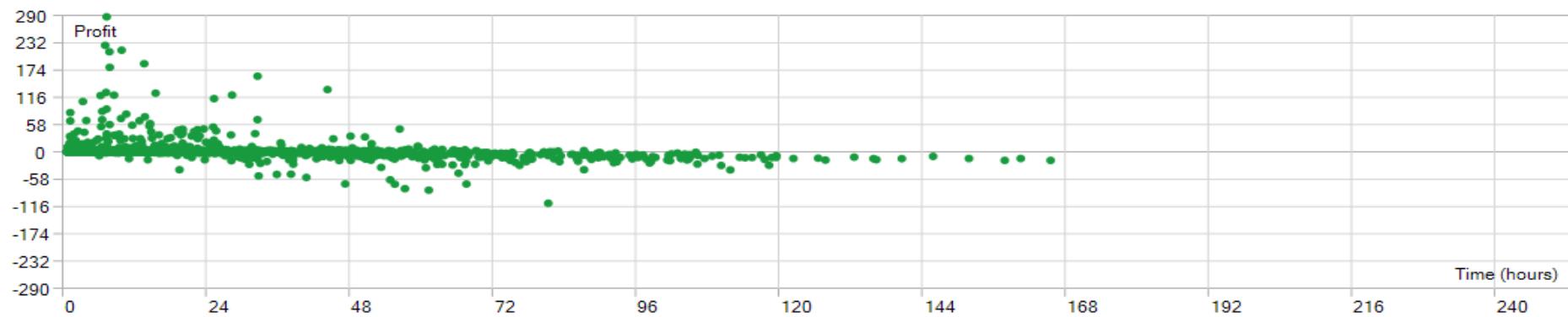
91B6D6



- SYMBOL:**USDCHF**TEMPORALITY:**H1**, SET NAME: "**NEXUS NEW SMART H1 USDCHF**"
- PROFIT:**\$3812**,GROWTH:**281%**,DRAWDOWN:**27.12%**,RECOVERY FACTOR:**4.07**
- INITIAL BALANCE OF THE TRIAL: **\$1000**,HEDGING: **INDEPENDENT**



91B6D6



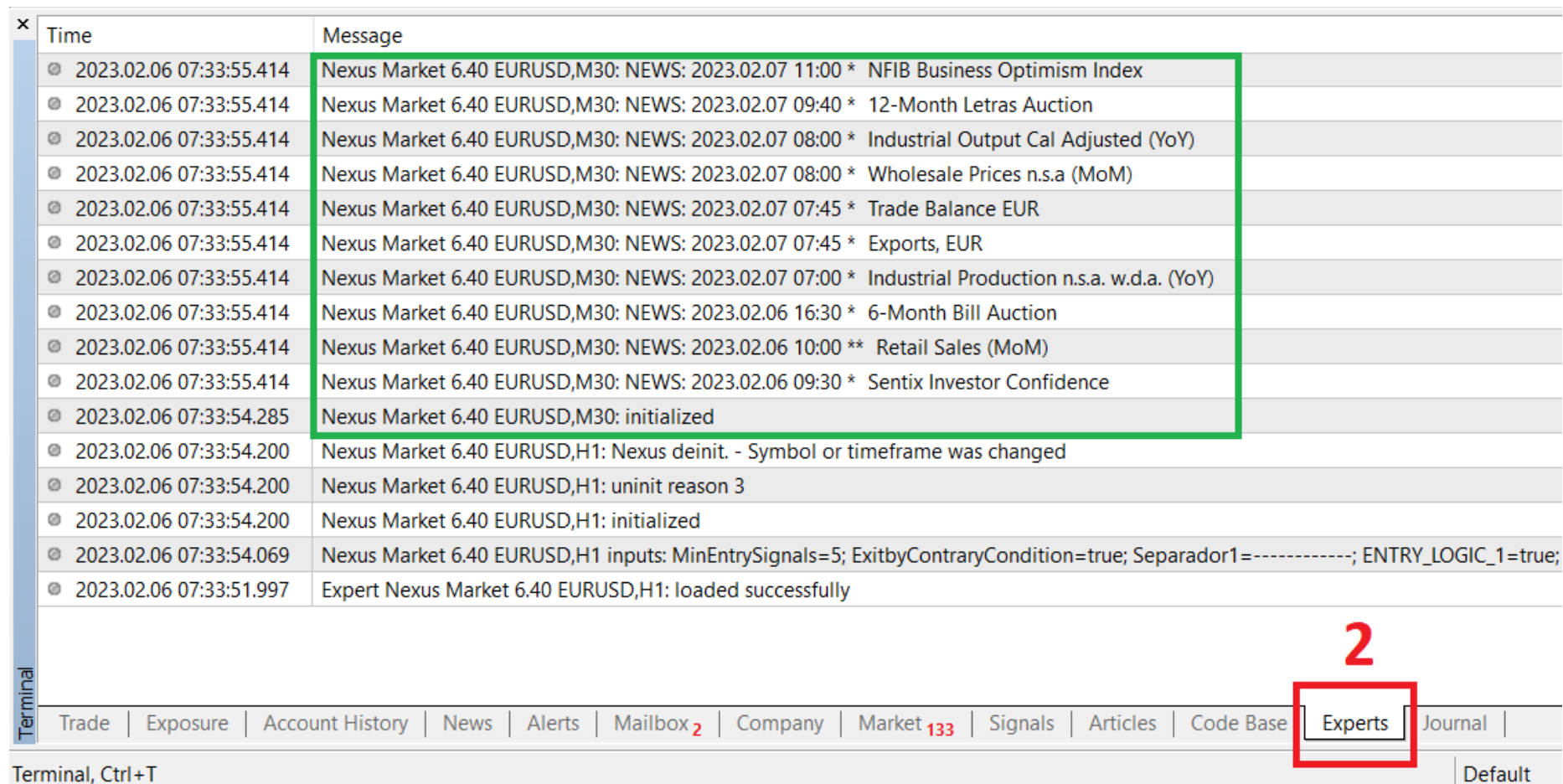
## 12. Check that everything is working correctly

You have already done the whole installation process, allowed the WebRequests, and loaded the sets. But you are not sure if you have executed the steps correctly, Or do you think you have overlooked something? You may simply see that some trade is not opening and you want to make sure that everything is fine.

Both Metatrader 4 and Metatrader 5 generate a record with absolutely everything that happens in the terminal, and this is where we will check if there is any alert or error. It is accessed with View > Terminal or Ctrl + T.



And then we go to the EXPERTS tab



The screenshot shows the MT5 terminal window. The top part displays a list of messages in a table format. The bottom part shows the navigation bar with various tabs, and the 'Experts' tab is highlighted with a red box and a red number '2' above it.

Time	Message
2023.02.06 07:33:55.414	Nexus Market 6.40 EURUSD,M30: NEWS: 2023.02.07 11:00 * NFIB Business Optimism Index
2023.02.06 07:33:55.414	Nexus Market 6.40 EURUSD,M30: NEWS: 2023.02.07 09:40 * 12-Month Letras Auction
2023.02.06 07:33:55.414	Nexus Market 6.40 EURUSD,M30: NEWS: 2023.02.07 08:00 * Industrial Output Cal Adjusted (YoY)
2023.02.06 07:33:55.414	Nexus Market 6.40 EURUSD,M30: NEWS: 2023.02.07 08:00 * Wholesale Prices n.s.a (MoM)
2023.02.06 07:33:55.414	Nexus Market 6.40 EURUSD,M30: NEWS: 2023.02.07 07:45 * Trade Balance EUR
2023.02.06 07:33:55.414	Nexus Market 6.40 EURUSD,M30: NEWS: 2023.02.07 07:45 * Exports, EUR
2023.02.06 07:33:55.414	Nexus Market 6.40 EURUSD,M30: NEWS: 2023.02.07 07:00 * Industrial Production n.s.a. w.d.a. (YoY)
2023.02.06 07:33:55.414	Nexus Market 6.40 EURUSD,M30: NEWS: 2023.02.06 16:30 * 6-Month Bill Auction
2023.02.06 07:33:55.414	Nexus Market 6.40 EURUSD,M30: NEWS: 2023.02.06 10:00 ** Retail Sales (MoM)
2023.02.06 07:33:55.414	Nexus Market 6.40 EURUSD,M30: NEWS: 2023.02.06 09:30 * Sentix Investor Confidence
2023.02.06 07:33:54.285	Nexus Market 6.40 EURUSD,M30: initialized
2023.02.06 07:33:54.200	Nexus Market 6.40 EURUSD,H1: Nexus deinit. - Symbol or timeframe was changed
2023.02.06 07:33:54.200	Nexus Market 6.40 EURUSD,H1: uninit reason 3
2023.02.06 07:33:54.200	Nexus Market 6.40 EURUSD,H1: initialized
2023.02.06 07:33:54.069	Nexus Market 6.40 EURUSD,H1 inputs: MinEntrySignals=5; ExitbyContraryCondition=true; Separador1=-----; ENTRY_LOGIC_1=true;
2023.02.06 07:33:51.997	Expert Nexus Market 6.40 EURUSD,H1: loaded successfully

Terminal, Ctrl+T

Trade | Exposure | Account History | News | Alerts | Mailbox 2 | Company | Market 133 | Signals | Articles | Code Base | **Experts** | Journal | Default

In this case you can see how Nexus has been initialized, how a first download of economic news has been made, and there is no alert that warns us that something is wrong. This will be your ally when you have doubts. And it is the way in which to notice an error and notify the developer or solve it.

## 13. Customer Reviews

Despite the fact that NEXUS is already a long-lived product that has gone through many phases of development and 6 different versions in which it has evolved and improved its strategies, it has shown an impressive capacity for adaptation and has managed to constantly improve to earn an excellent reputation among the users.

Many have been using NEXUS since its first version and continue to do so with pride for us to this day. Some have even built asset management companies with this Expert Advisor, proving that it is just as effective for beginners as it is for advanced traders.

Furthermore, it is a product that has been tried and tested over time, and continues to be an excellent option for those looking to improve their results of trading.

At this precise moment we are building the version for Metatrader 5, which will allow us to develop its capabilities in parallel, and obtain winning opportunities in the market for a long time.



61

**Whip Saw** 2022.05.12 16:27 # ★★★★★

Solid products and great support.

UPDATE: I am at 2 months of demo testing and 1 month live using Nexus. Continuous positive results on all accounts it runs on. Enrique and his team are top notch and very attentive to user questions and suggestions. Love the fact they are investors and constantly looking at long term sustainability from the system(s). NOTE: As good as it performs, this is not a get rich quick system. Read and listen to the information provided and use the tools to your risk and comfort levels.



168

**John Reece Colina** 2022.05.05 05:17 # ★★★★★

Great EA! Although they recommended it on 500 usd per currency, I highly recommend you put a little margin like 800 USD. From there, you can scale it out which is the very one thing I loved about this EA. I also use the 5min-1hour combo since the 1 minute opens more trades and my broker only offers 75 open trades for the 500 leverage.

In comparison to Center, you can sleep soundly with Nexus since it has low drawdowns.

Thank you for this masterpiece, Enrique.

P.S. hope the recovery mode will be released soon, since it was greatly needed last month. And I promise, you need to get this before the price goes up. The price is way too cheap for the performance it gives.



246

**Evren Caglar** 2022.02.22 12:01 # ★★★★★ ES

If you are tired of non-reliable useless bots, you are at the right address. This bot worth's every penny you pay... I had many bad experiences with trading robots in the past and therefore I have not been using them for many years which made me a swing trader. I am mostly swing trader now and I manually trade stock indices. Very recently, I wanted to enrich my trading activity with bots and gave another try to them. When I am searching in the market I came across with Trendex and Enrique. He has a free EA, which is Center EA. I have tested in demo and real accounts and I have noticed the significant performance and the brilliant logic behind it. This free robot I have been still using in my real account. I thought, if a free bot is so successful, then the paid bots can perform much better. So I tested all of them with 99.9 tick data and observed the amazing performance. Surprisingly, if you are going to use it on currency pairs, you don't even need to change any parameter, it takes care everything. You don't need to deal with this time consuming and generally useless optimization process. So, it didn't last long to buy this Nexus EA. I have been using Nexus EA with the default settings in EUR/USD and with my calibrated parameters in US500. Both are very profitable from the first day and very low DD. Enrique and his robots have changed my mind completely about trading bots. Definitely I am going to buy all his bots one by one. He is kind and responsive. Thank you for developing such good bots and I wish you very success in the future development of such paramount expert advisors, My best, Evren



45

**Sebastien Simon** 2022.04.29 23:00 # ★★★★★ ES

Cela fait maintenant une semaine, que j'utilise Nexus... Je n'ai pas d'expérience dans le domaine du trading. J'ai commencé au début de la guerre ukrainienne, pour profiter de la montée de l'or et du pétrole. Et aujourd'hui, je loue mon premier robot... Nexus... C'est le genre de produit que tu mets en place et tu attends, au début c'est bizarre les premiers trades, il faut faire confiance, mais les testes et le demo ce passant bien, je suis passé en réel et ça marche super bien. Tellement bien que je ne connais pas beaucoup le développeur, je n'ai pas eu besoin de lui demander quoique ce soit, fichiers set ou autres requêtes, Nexus est prêt à l'emploi, tu lis le mode d'emploi, tu fais ce qu'il y a de demander correctement ! tu observe puis tu regrettes de l'avoir louer parce que je vais acheter dans 3 mois.... J'ai envoyé quelques messages à Enrique sur telegram pour lui dire des trucs de débutant, Il ne manque pas de répondre et de redire ce qu'il a déjà écrit dans le mode d'emploi. Mais Nexus est prêt à l'emploi, parfait pour les débutants, essayez la demo, testez autant que vous voulez, sans rien modifier, vous comprendrez! Merci Enrique pour ton travail... J'adore Nexus...



659

**Jakob Jan Van Ommen** 2022.02.09 21:23 # ★★★★★ ES

Low risk stable profit generator. Numbers match with the signal. Easy to use EA for long term profits!!



474

**ryanchan000** 2021.10.20 09:32 # ★★★★★ ES

Very safety , very low drawdown and good profit, simple and easy to use, author also continues to update ea and very helpful, answers very quickly, and is worth recommending. 🍷👍 I really appreciate the strategy of the author all product. It is not open an order at a fixed distance like the traditional ea, its open orders based on momentum something like that indicators, which is really good. 📈



1129

**Kryptofe** 2021.09.19 07:44 # ★★★★★ ES

Producto con usa estrategia diferente a todas, 2 semanas con el en real y un flotante bajísimo, Enrique muy buen trabajo!



194

**David Jose Gracia Morales** 2021.06.26 14:45 # ★★★★★ ES

Otro magnifico producto de este autor, una semana horrible y ha mantenido el DD bajo y con un buen beneficio, llevo 2 semanas con el y un 5% de beneficio. Aparte de la gran atención al cliente, contesta rápido cualquier duda y aconseja lo mejor para ti. Recomendable 100%



## **14. CRYPTO Payments**

We are aware that due to some limitations, there are users who cannot make payments with a bank card. That is why we have enabled cryptocurrency payments. If you need to make a payment in this way, please contact the TRENDX team by Telegram, at the address @EnriqueTrendex