

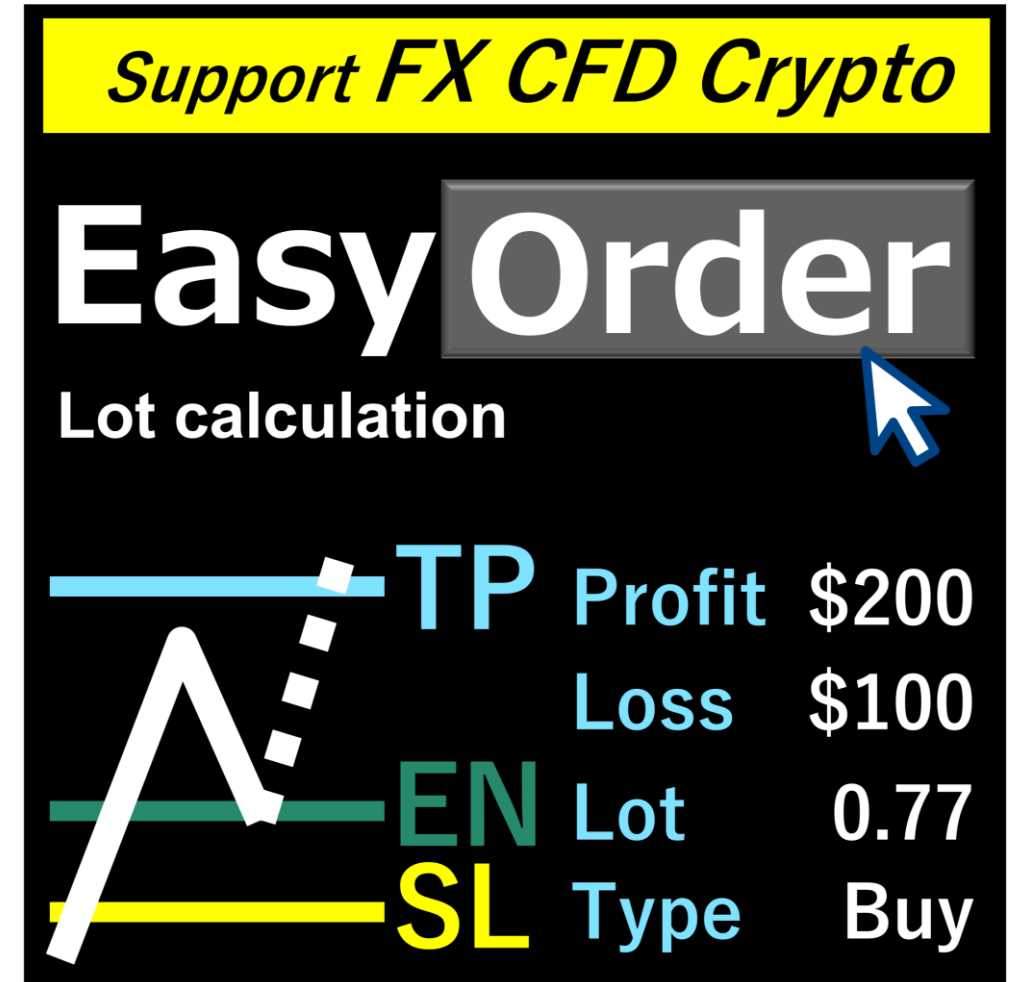
# RT software lab.

by Rikei-Trader Yoshiki

Lot calculation tool

## Easyorder Manual

Ver. 7.04



# Introduction

Hi. I'm Rikei Trader Yoshiki, the creator of this software.

Thank you for purchasing Easyorder Pro.

We hope that this tool will be useful for your trading.

Please read the precautions and instructions on this document carefully before using.

商品概要

コミュニティ (203)

FX CFD 仮想通貨  
金銭柄対応  
水平線  
ロット計算  
製品 MT4 & MT5

お気に入り  
377

販売実績:  
**1628本**

レビュー:  
★★★★★ (45)

【簡単オーダー付き】許容損失一定型 ロット自動計算インジケータ for MT4&5【EasyOrder】  
水平線を動かすだけ。ややこしい計算不要。ロスカット金額一定で安心トレード♪FX、仮想通貨、CFDの全通貨対応

キーワード: [メタトレーダー4\(MT4\)](#) [メタトレーダー5\(MT5\)](#) [インジケータ](#) [裁量](#) [投資](#) [デイトレード](#) [チャート](#) [ツール](#) [ビットコイン](#)

カテゴリ: [FX](#) [株式](#) [商品先物](#) [ビットコイン](#)

提供方法: [インジケータ](#)

販売開始日: 2021/04/20      更新日時: 2023/05/28

バージョン: 7.04

ご利用可能会社: [FOREX.com \(JP\)](#) [デューカスコピー・ジャパン](#) [楽天証券](#) [FXTF \(ゴールドウェイ・ジャパン株式会社\)](#) [外為ファイネスト](#) [アヴァトレード](#) [OANDA JAPAN](#) [FOREX EXCHANGE株式会社](#) [EZインベスト証券](#) [Crypto-X](#) その他 [フィリップ証券](#)

支払い方法:

日本      フォロー 31   フォロワー 123      [フォローする](#)

出品者 [Rikei Trader yoshiki](#)

出品者の最終ログイン時間: 2023年5月29日 13:46:14

[質問をする](#)      [機密保持契約\(NDA\)](#)      [本人確認資料提出済み](#)

[出品者情報をもっと見る](#)

<https://www.gogojungle.co.jp/tools/indicators/29090>

# Notes 1/2

---

- Please use a real account after checking the operation with a demo account.  
This is because we have confirmed operation on multiple MT4/MT5 exchanges, but we cannot guarantee operation in all environments.
- This is for Windows. Linux and Mac have not been confirmed to work.
- We are not responsible for any damage caused by using this product. Please use at your own risk.
- Lot calculation cannot be calculated with complete accuracy.  
(Because there is a limit on the number of decimal places in the lot. Rounding or rounding down can be selected.)
- In the same way as the order method of existing MetaTrader functions,  
orders may not be possible if the number of lots is too large or too small, or the entry position is close to the current price.
- It may conflict with other indicators. If it does not work, please use this tool alone.

# Notes 2/2

---

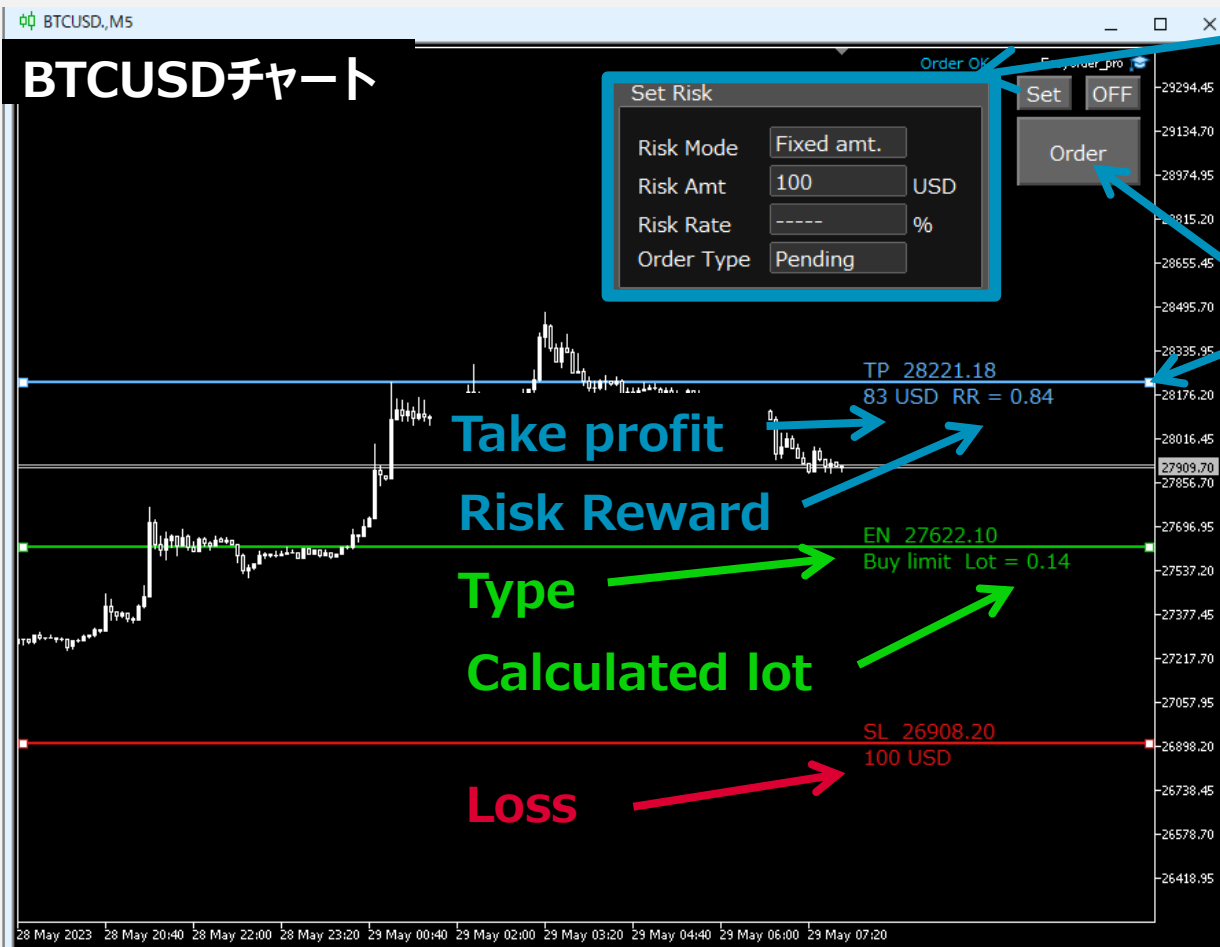
- 9. Please display the all currencies on the quote price. You can close the window after setting.
- 1 0. We support calculation of all instruments, but we cannot guarantee that it will work with all brokers.  
Please check in advance with the free demo version.
- 1 1. Please note that it cannot be used with accounts that cannot use EA. Please check in advance with the free demo version.

If you have any problems or requests, please feel free to contact Rikei Trader Yoshiki.

- ※ Please note that it may take some time to reply.
- ※ Please leave a review. Thank you very much for all the messages I have received so far.  
It will be an encouragement for me in the future.

# Functional overview

## Easy to order with **just 3 steps**



1

**Set loss**

(Fixed or ratio of balance)

2

**Move lines**

(TP, EN, SL)

3

**Press Order button**

FX, CFD, crypto, etc..  
It is convenient to  
support all currency !



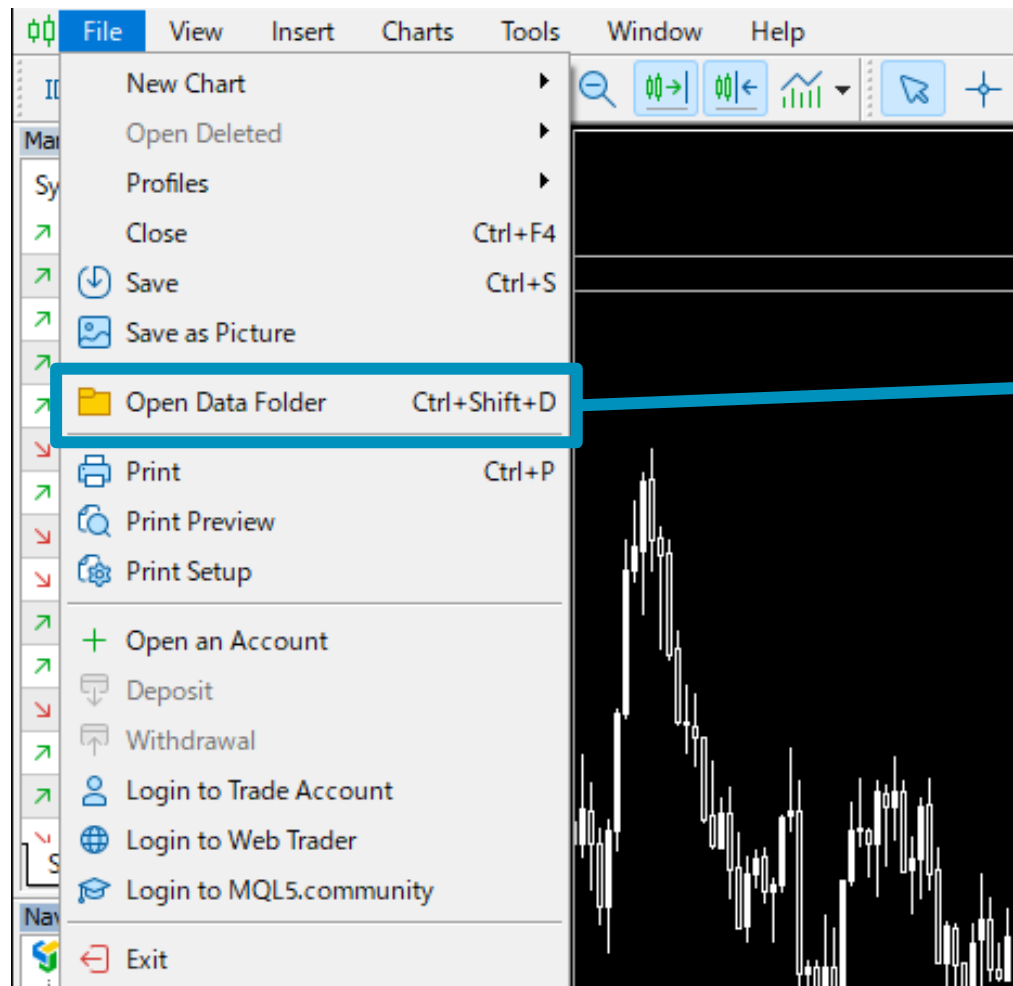
# Functional overview

---

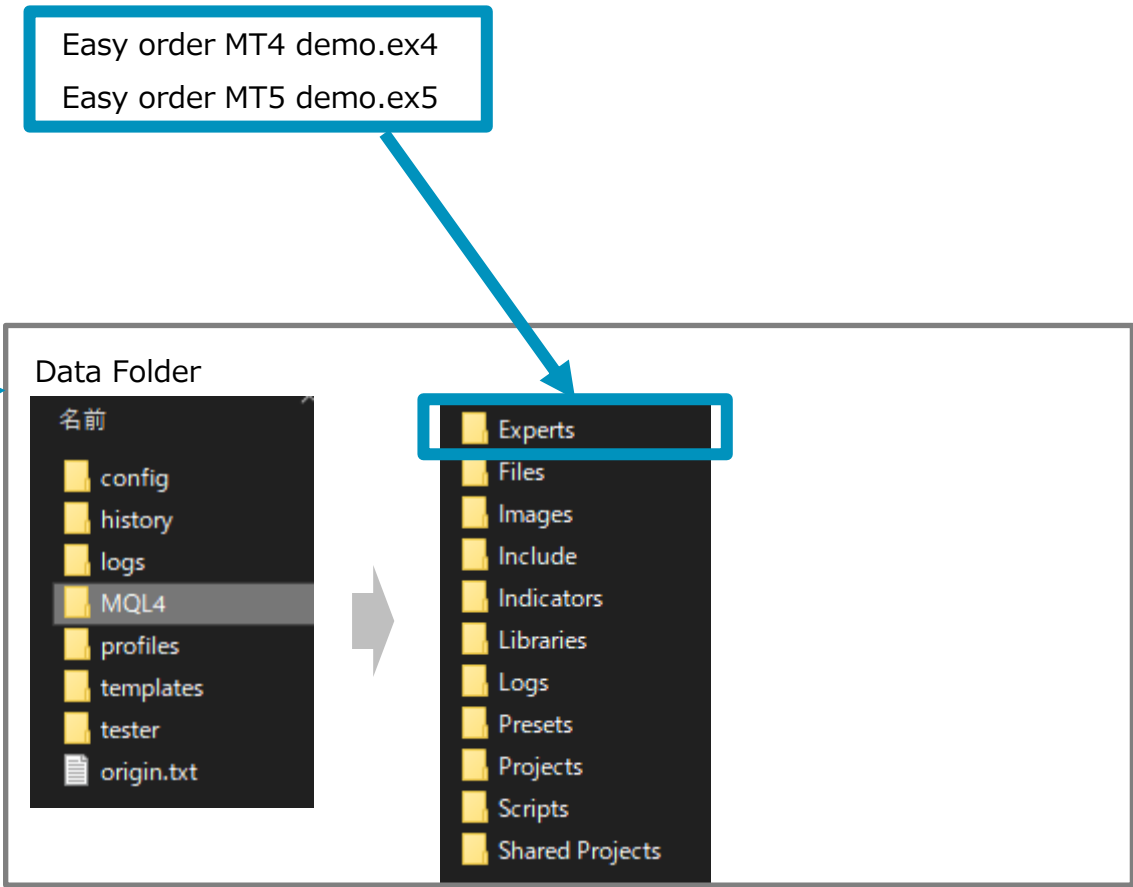
- Lot is automatically calculated from the stop loss amount moving the horizontal line.
- You can select simple interest (fixed amount), compound interest (balance ○%), or compound interest (equity margin ○%).
- Automatically applies market orders, limit orders, and stop orders.
- Calculate the risk reward.
- You can place an order with the click of a button.
- Supports JPY, USD, EUR, and BTC accounts. (Distinguish automatically)
- Full support for FX, CFD (futures, NY Dow, GOLD, etc.) and crypto currency.

# How to install to MetaTrader (Demo version)

1. Start Meta Trader and click "Open data folder".



2. Put this tool in the Experts folder



3. Restart MetaTrader

# How to install to MetaTrader (Pro(paid) version)

---

Please refer to the following link

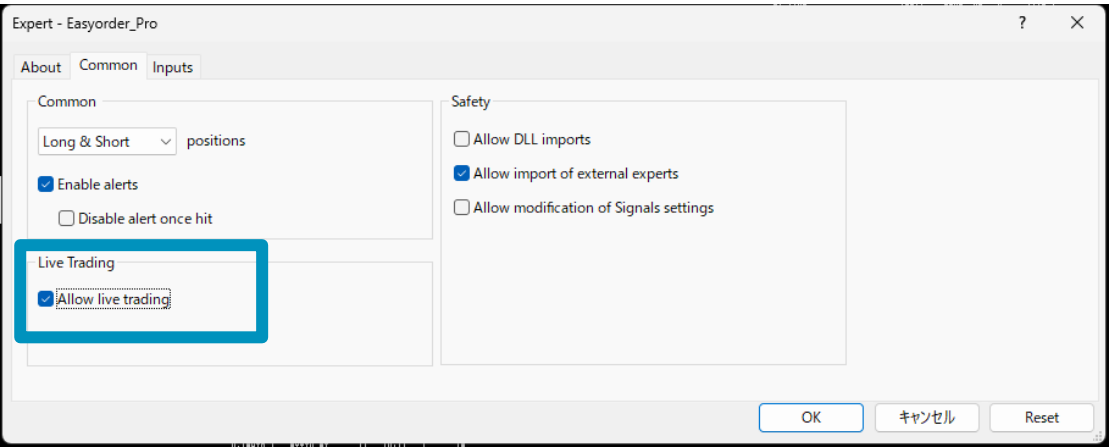
<https://www.mql5.com/ja/articles/498>



# Setting 1/3

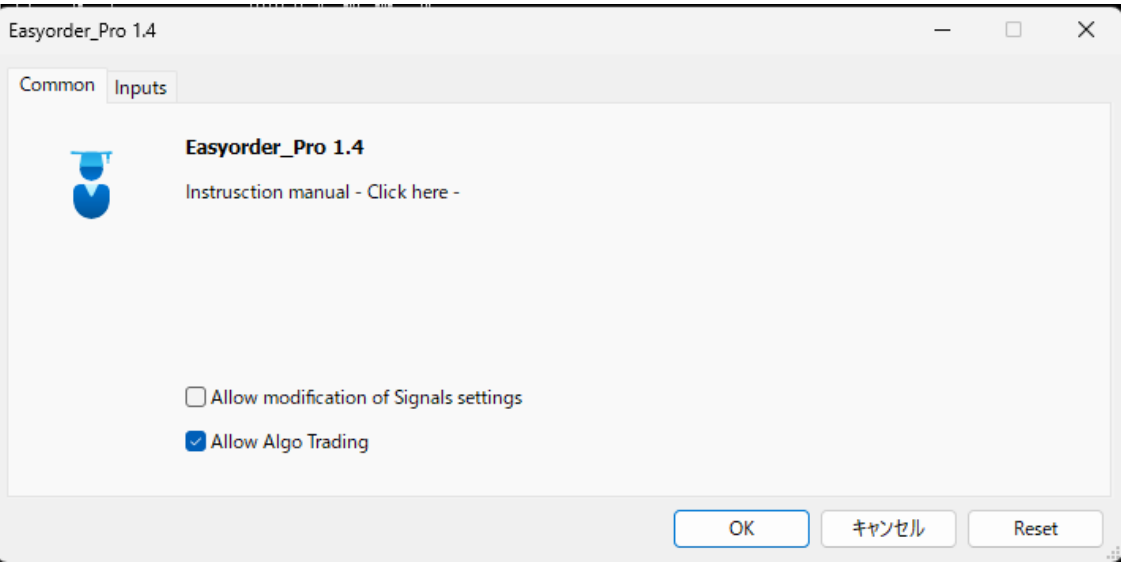
## For MT4

Check “Allow live trading”



## For MT5

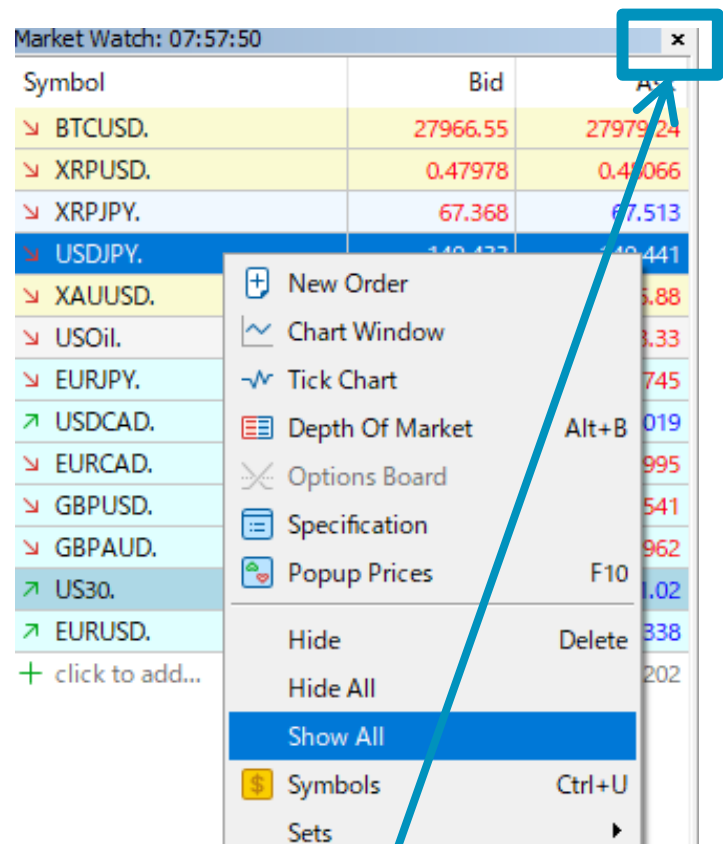
Check “Allow Algo Trading”



# Setting 2/3

Show required currency for Market Watch

1 .Right-click on the Market Watch → Select "Show all"



2. Delete the Market Watch window (as needed)

## Reference

In the beginning, it is safe to display all as shown on the left.  
The required currency must be displayed for lot calculation.

# Setting 3/3

## Inputs parameter

Easyorder\_pro 7.04

Common Inputs

Variable	Value
ab Risk settings	=== Risk ===
---- Currency of risk calculation	USD US Dollar
----Method of risk	Fixed amount
1/2 ----Risk for Fixed amount[Currency]	100.0
1/2 ----Risk for Balance[%]	5.0
ab Debug Mode settings	=== Debug Mode===
----Order condition monitor SW	OFF
ab General settings	=== General ===
----Position manager(Trailing stop)SW	OFF
----Symbol to display position managaer	Current symbol
----Auto disp OFF when order is completed	ON
----Lot rounding	Round down
----Initial settings of order method	Pending order
----Take profit line	ON
----Digit SW(Set when order cannot be m...	OFF
ab Risk reward fixed function settings	=== Risk reward fixed function ===
----Function ON/OFF	OFF
1/2 ----Fixed risk reward value[%]	2.5
ab Sound settings	=== Sound ===
----Order sound SW	ON

Load Save

OK キャンセル Reset

You can also set it in the risk set dialog, it is convenient to set it because it will be the initial value.

When using for the first time, it is recommended to turn it on. You can check the availability of your order (default is OFF)

# Description of the tool screen

This is the PM (Position Manager) button.  
When turned ON, the position manager dialog appears.  
Please use when using the trailing stop function  
(Initial value is hidden)

Position Manager

Balance: 10028170 JPY

Gross Profit: -348 JPY

All exit/cancel

Split exit lot: 0

Symbol	Ticket	Time	Type	Lot	EN	SL	TP	Profit	Exit/cance	Split	TSSW	TSSet	TSSL
BTCUSD	33167863	2023.05.29 08:57:24	Buy	0.16	28041.40	27437.62	28298.88	-348	<div>x</div>	<div>x</div>	<div>OFF</div>	<div>0.00</div>	<div>0.00</div>
BTCUSD	33167861	2023.05.29 08:57:19	Buy limit	0.12	27868.25	27087.44	28676.10	placed	<div>x</div>		<div>OFF</div>	<div>0.00</div>	<div>0.00</div>

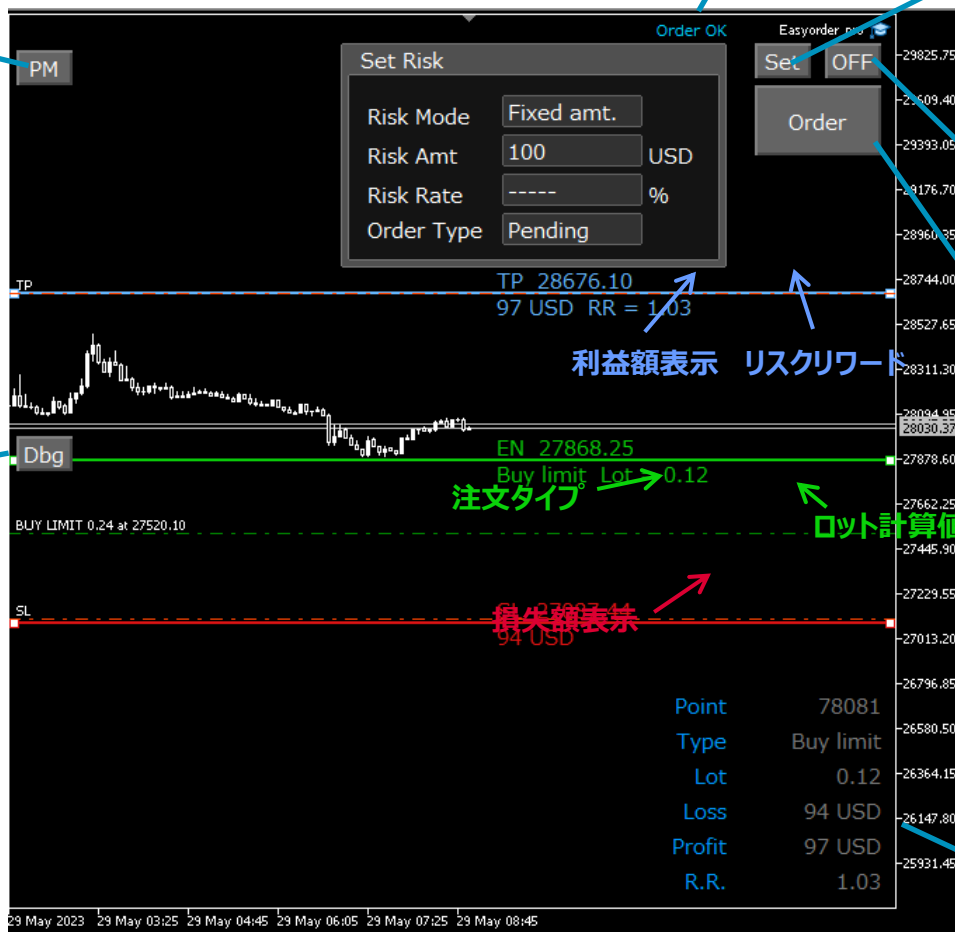
Position manager dialog  
You can check positions and orders.  
TSSW/TSSet/TSSL  
You can use the trailing stop function with .  
(explained on another page)

Dbg button  
Order condition monitor appears.  
You can check the order conditions.  
(Initial value is hidden)

Order condition monitor	
Account EA Allowed	OK
MetaTrader EA Alloed	OK
Tool EA Allowed	OK
Trading hours	OK
Lot in range	OK
Distance b/w SL and EN	OK
Distance b/w TP and EN	OK
Distance b/w EN and Ask/Bid	OK
TP positon	OK
Symbol display of quotes	OK

Order condition OK/NG display  
In the case of NG, it may not be possible to place an order.  
You can check the details by pressing the Dbg button.

Set button  
Risk Settings dialog will appear.  
You can set the loss amount.



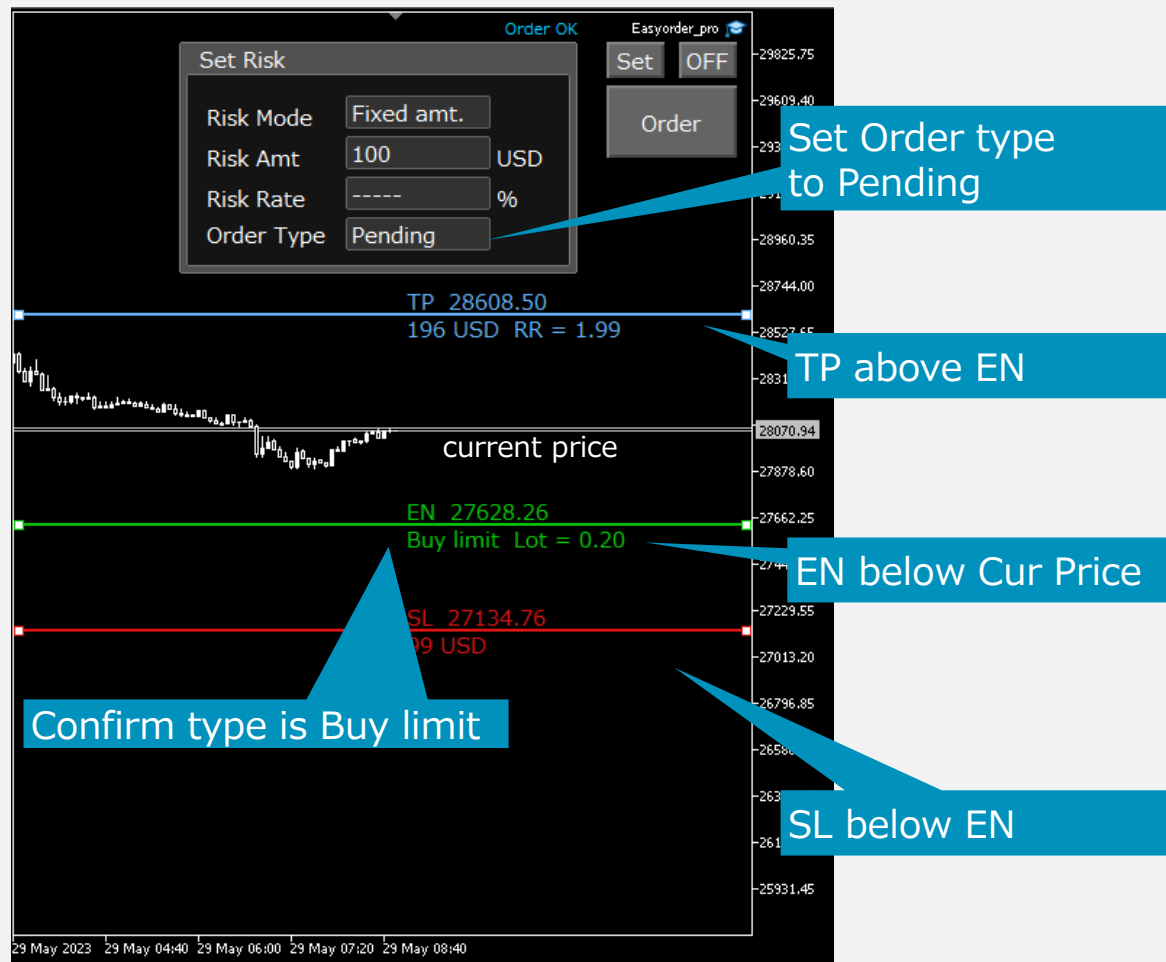
ON/OFF button  
Show/hide this tool  
can switch

Order button  
Press the button to order

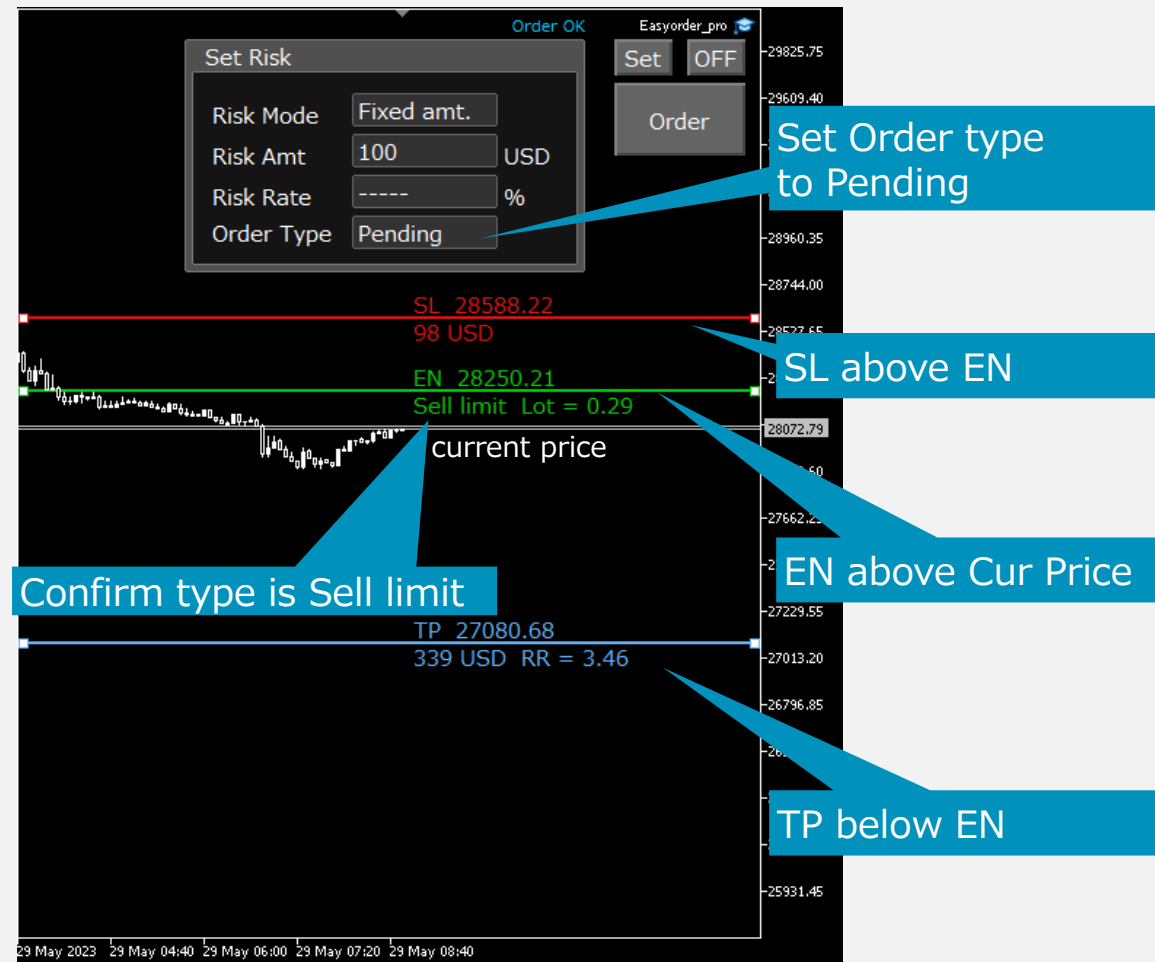
Information label  
(Initial value is hidden)

# Limit order method

## Buy(Long)

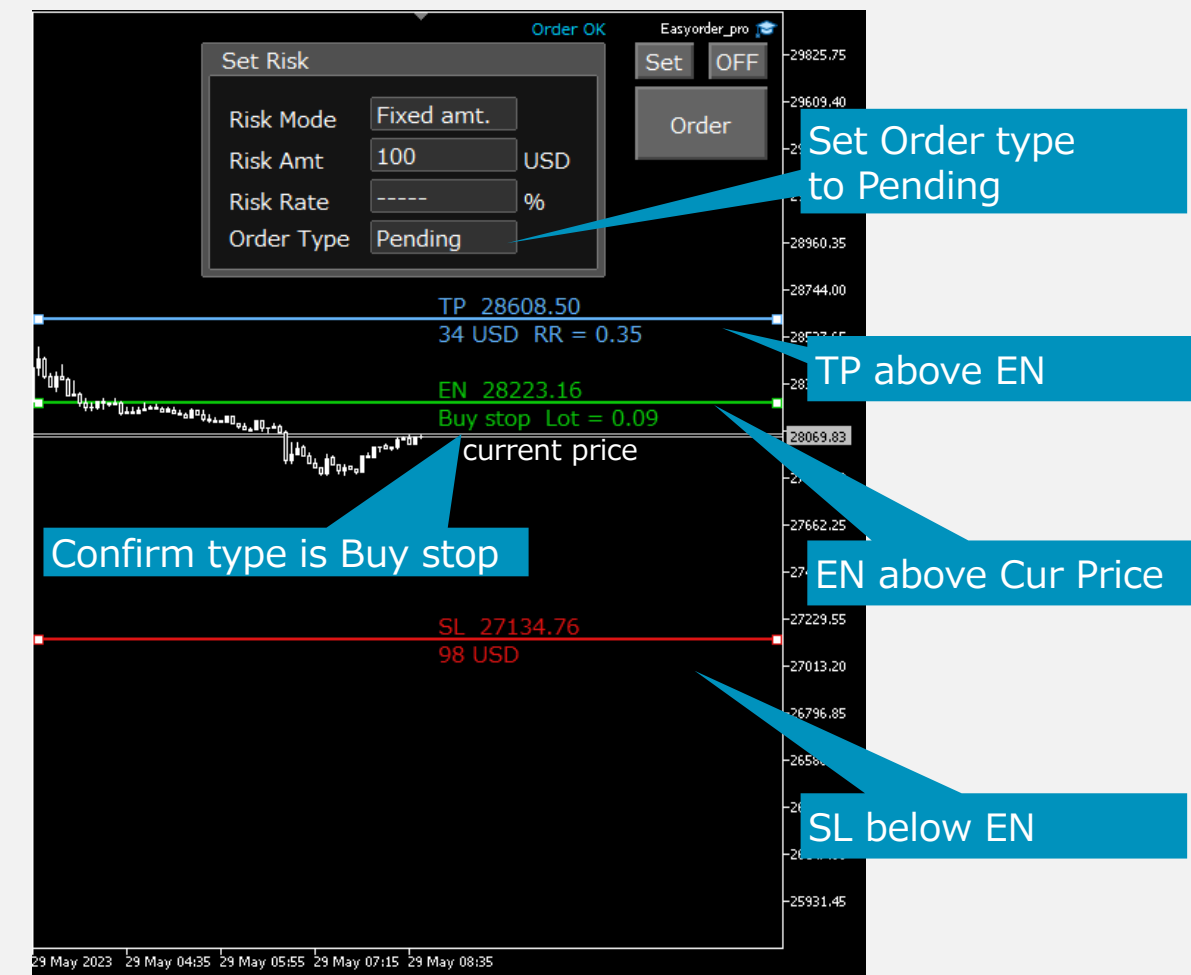


## Sell(Short)



# Stop order method

## Buy(Long)

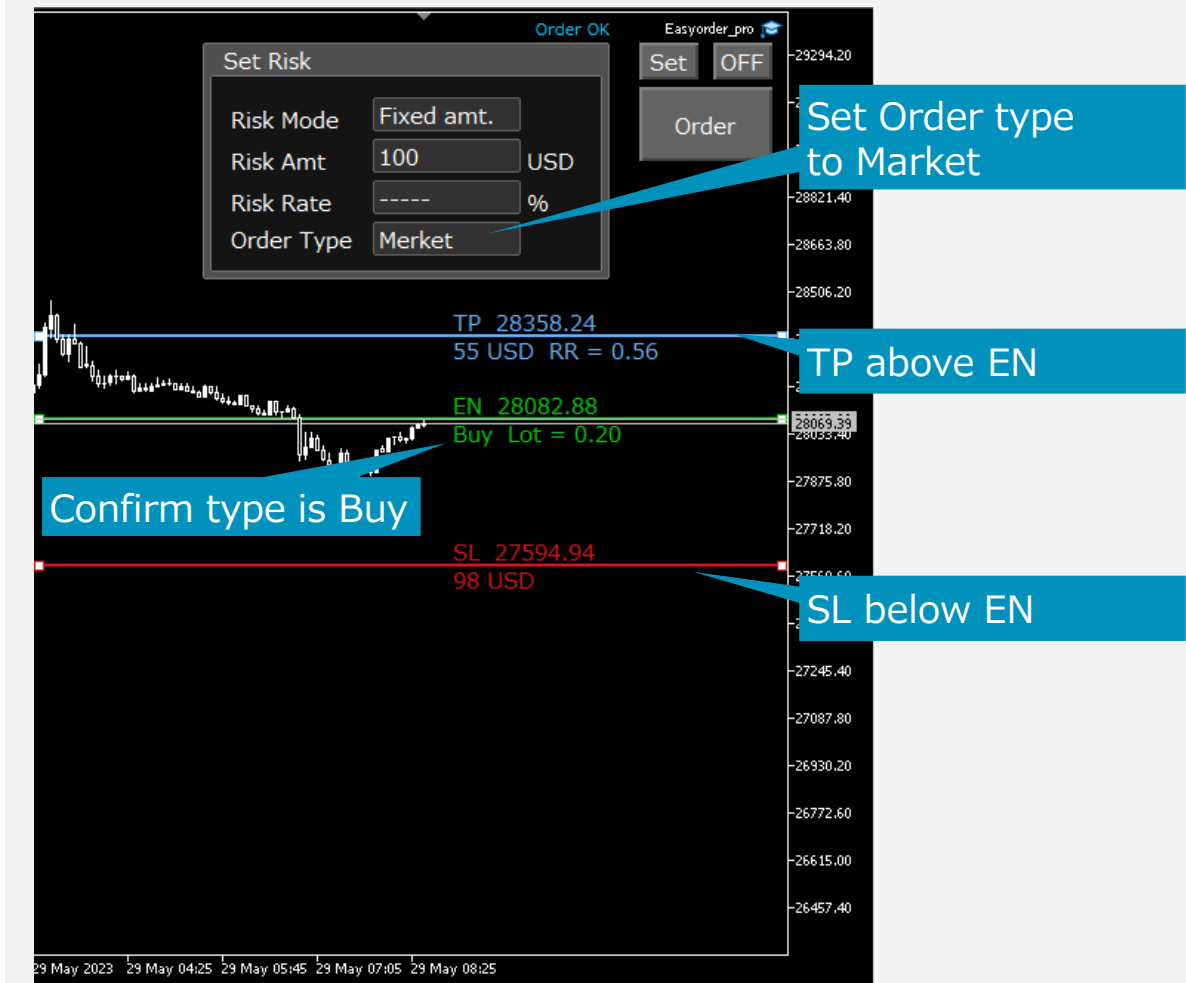


## Sell(Short)

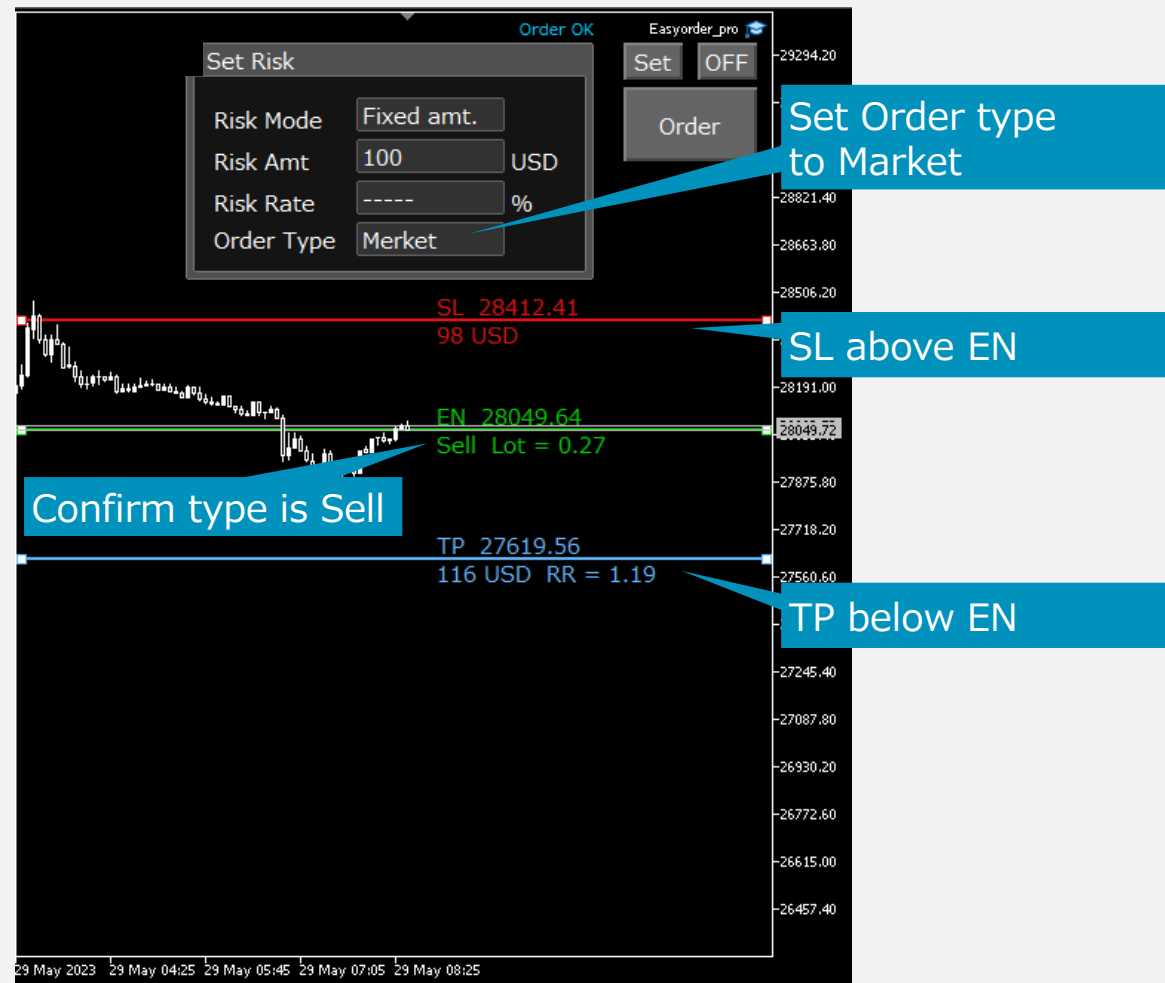


# Mercket order method

## Buy(Long)



## Sell(Short)



# How to order if TP is not required

You can hide TP by setting the following parameter to OFF.

Easyorder\_pro 7.04

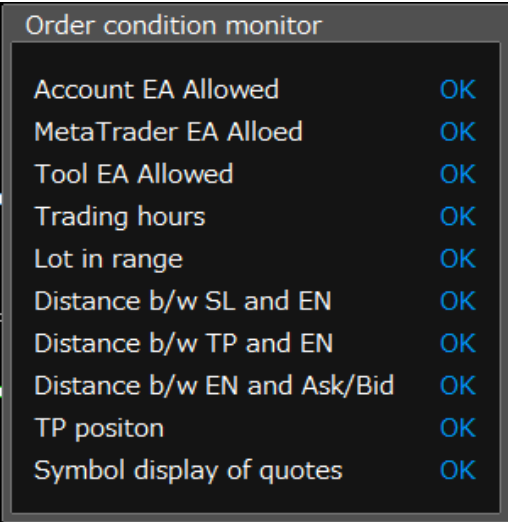
Common Inputs	
Variable	Value
ab Risk settings	=== Risk ===
---- Currency of risk calculation	USD US Dollar
-----Method of risk	Fixed amount
1/2 -----Risk for Fixed amount[Currency]	100.0
1/2 -----Risk for Balance[%]	5.0
ab Debug Mode settings	=== Debug Mode===
-----Order condition monitor SW	ON
ab General settings	=== General ===
-----Position manager(Trailing stop)SW	ON
-----Symbol to display position managaer	Current symbol
-----Auto disp OFF when order is completed	ON
-----Lot rounding	Round down
-----Initial settings of order method	Pending order
-----Take profit line	ON
-----Digit SW(Set when order cannot be m...	OFF
ab Risk reward fixed function settings	=== Risk reward fixed function ===
-----Function ON/OFF	OFF
1/2 -----Fixed risk reward value[%]	2.5
ab Sound settings	=== Sound ===
-----Order sound SW	ON

→OFF

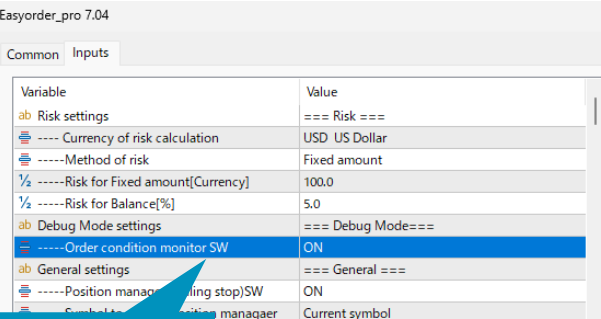


# Order condition monitor

Display order conditions in a list. You can order if everything is OK. In the case of NG, please refer to the following.



Item	Condition	Supplement
Account EA Allowed	broker factor. Please use an account that can use EA. If it is NG, it is an account that cannot use this tool.	Please consider using a different account/broker.
MetaTrader EA Allowed	Automatic trading (MT4) and algorithmic trading (MT5) are enabled	Please refer to the "Setting" page
Tool EA Allowed	-	Please refer to the "Setting" page
Trading hours	-	<b>If the broker's time is stopped, OK is displayed even outside trading hours.</b>
Lot in range	It will be OK if it is within the lot lower limit and upper limit specified by the Symbol.	Even if it is OK if the margin is insufficient, You may not be able to place an order.
Distance b/w SL and EN	It is necessary to release the number of points specified by the Symbol.	-
Distance b/w TP and EN	It is necessary to release the number of points specified by the Symbol.	-
Distance b/w SL and Ask/Bid	It is necessary to release the number of points specified by the Symbol.(Only for pending order)	-
TP position	If the TP is in the opposite direction and the risk reward is negative, it will be NG.	-
Symbol display of quotes	If the stock required for lot calculation is not in the quote price, it will be NG.	Recommend displaying all brands.



turn it on






Push Dbg button

Even if all the order conditions are met, there may be cases where the order is not executed for some reason. In that case, please see the "Journal".

**If you see "Trade is disabled" in your Journal, it's mostly a broker limiting factor. Please contact your broker as it is not a tool issue.**

# Sound settings

ab	Sound settings	=== Sound ===
	-----Order sound SW	ON
ab	-----Order sound file name	OK.wav
	-----Exit sound SW	ON
ab	-----Exit sound file name	OK.wav
	-----Trailing stop sound SW	ON
ab	-----Trailing stop sound file name	OK.wav

When set to on, sound will play.

## sound file location

It's usually in the folder below. (Please do your own research)

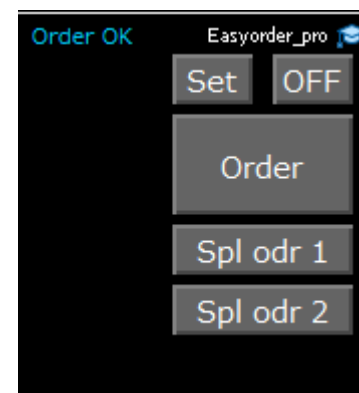
C:¥Program Files (x86)¥ [broker name]Meta trader 4/5 ¥ Sounds  
C:¥Program Files ¥[broker name]Meta trader 4/5 |Sounds

Note that only wav files are supported.

# Split order settings

## Parameter

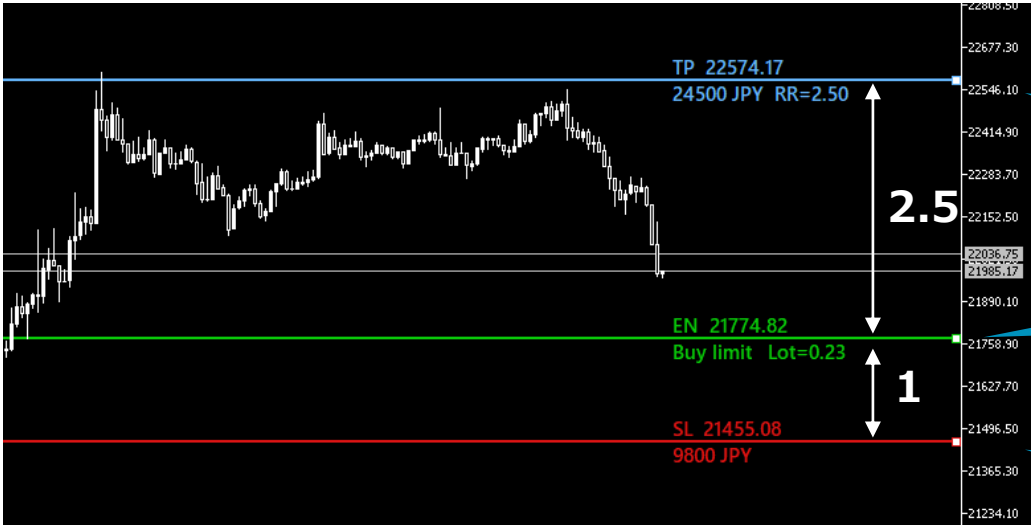
Variable	Value
ab Splot order 1 button settings	=== Split order1 button ===
-----Function ON/OFF	SHOW
01 -----Splot rate[%]	50
ab -----Message	Spl odr 1
-----Letter color	<input type="checkbox"/> White
-----Background color	<input checked="" type="checkbox"/> 100,100,100
01 -----Font size	11
-----Corner position	Upper right
01 -----X size [pixel]	90
01 -----Y size [pixel]	25
01 -----X pos [pixel]	10
01 -----Y pos [pixel]	105
ab Splot order 2 button settings	=== Split order2 button ===
-----Function ON/OFF	SHOW
01 -----Splot rate[%]	25
ab -----Message	Spl odr 2
-----Letter color	<input type="checkbox"/> White
-----Background color	<input checked="" type="checkbox"/> 100,100,100
01 -----Font size	11
-----Corner position	Upper right
01 -----X size [pixel]	90
01 -----Y size [pixel]	25
01 -----X pos [pixel]	10
01 -----Y pos [pixel]	135



# Risk reward fix settings

ab Risk reward fixed function settings	=== Risk reward fixed function ===
-----Function ON/OFF	OFF → <b>ON</b>
1/2 -----Fixed risk reward value[%]	2.5 → <b>positive number</b>

If I set it like this  
Risk reward fixed function can be used



When TP is moved,  
SL moves to designated risk reward position

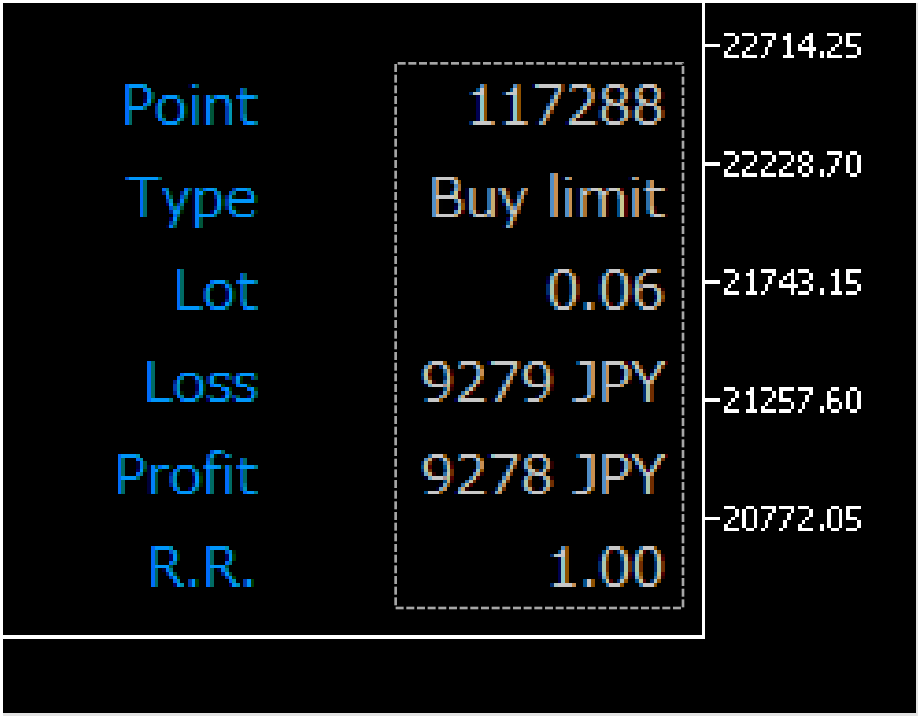
When EN is moved,  
TP moves to designated risk reward position

When SL is moved,  
TP moves to designated risk reward position

# Information label

Default is hidden








Variable	Value
ab Information label Common settings	=== Infomation label/ Common ===
-----Corner	Right lower chart corner
-----Anchor	Right lower corner
ab -----Font	Meiryo UI
-----Color of item	0,150,250
-----Calor of value	120,120,120
01 -----FontSize	11
ab Information label Point	=== Infomation label / Point ===
-----Display	SHOW
ab -----Message	Point
01 -----X pos of item [pixel]	120
01 -----Y pos of item [pixel]	135
01 -----X pos of value [pixel]	10
01 -----Y pos of value [pixel]	135
ab Information label Type	=== Infomation label / Type ===
-----Display	SHOW
ab -----Message	Type
01 -----X pos of item [pixel]	120
01 -----Y pos of item [pixel]	110
01 -----X pos of value [pixel]	10
01 -----Y pos of value [pixel]	110
ab Information label Lot	=== Infomation label / Lot ===
-----Display	SHOW
ab -----Message	Lot
01 -----X pos of item [pixel]	120
01 -----Y pos of item [pixel]	85
01 -----X pos of value [pixel]	10
01 -----Y pos of value [pixel]	85

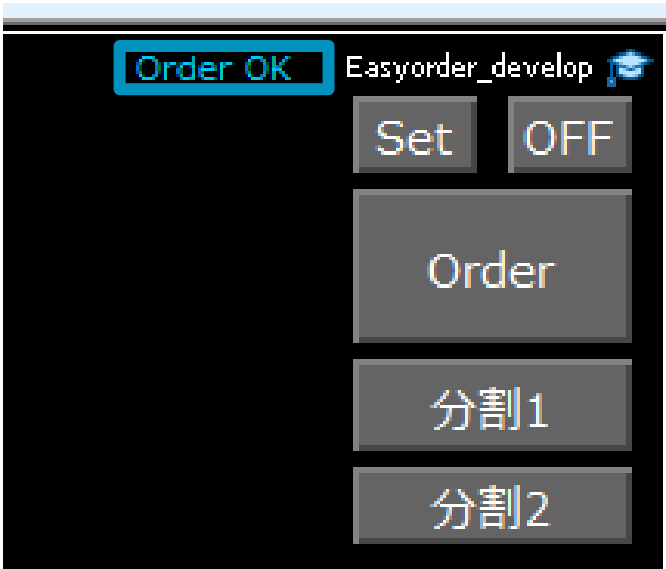


ab Information label Loss	=== Infomation label / Loss ===
-----Display	SHOW
ab -----Message	Loss
01 -----X pos of item [pixel]	120
01 -----Y pos of item [pixel]	60
01 -----X pos of value [pixel]	10
01 -----Y pos of value [pixel]	60
ab Information label Profit	=== Infomation label / Profit ===
-----Display	SHOW
ab -----Message	Profit
01 -----X pos of item [pixel]	120
01 -----Y pos of item [pixel]	35
01 -----X pos of value [pixel]	10
01 -----Y pos of value [pixel]	35
ab Information label RiskReward	=== Infomation / Risk reward ===
-----Display	SHOW
ab -----Message	R.R.
01 -----X pos of item [pixel]	120
01 -----Y pos of item [pixel]	10
01 -----X pos of value [pixel]	10
01 -----Y pos of value [pixel]	10

There are many parameters,  
but please try to adjust them to your liking!

# Order status settings

ab	Order status settings	=== Order status ===
	-----Display	SHOW
01	-----X pos [pixel]	120
01	-----Y pos [pixel]	3
	-----Anchor	Right upper corner
	-----Corner	Right upper chart corner
ab	-----Font	Meiryo UI
01	-----Font size	8
	-----Color of OK	 0,200,250
	-----Color of NG	 220,20,20



# 水平線設定

ab	Horizontal line settings	=== Horizontal line ===
Color of SL	220,20,20	
Color of TP	100,180,250	
Color of EN	10,200,10	
Style of the line	Solid	
Width of the line	2	
Color of TSSet line	250,250,50	
Color of TSSL line	250,150,0	
ab	Horizontal line text settings	=== Horizontal line text ===
Font	Meiryo UI	
Font size	11	
ab	SL line text settings	=== SL line text ===
Message at the top w/ space	SL	
Display message at the top	SHOW	
Message at the bottom w/ space		
Display message at the bottom	SHOW	
ab	TP line text settings	=== TP line text ===
Message at the top w/ space	TP	
Display message at the top	SHOW	
Message(Profot) at the bottom w/ spa...		
Display message(Profit) at the bottom	SHOW	
Message(R.R.) at the bottom w/ space	RR =	
Display message(R.R.) at the bottom	SHOW	
ab	EN line text settings	=== EN line text ===
Message at the top w/ space	EN	
Display message at the top	SHOW	
Message(Type) at the bottom w/ space		
Display message(Type) at the bottom	SHOW	
Message(Lot) at the bottom w/ space	Lot =	
Display message(Lot) at the bottom	SHOW	

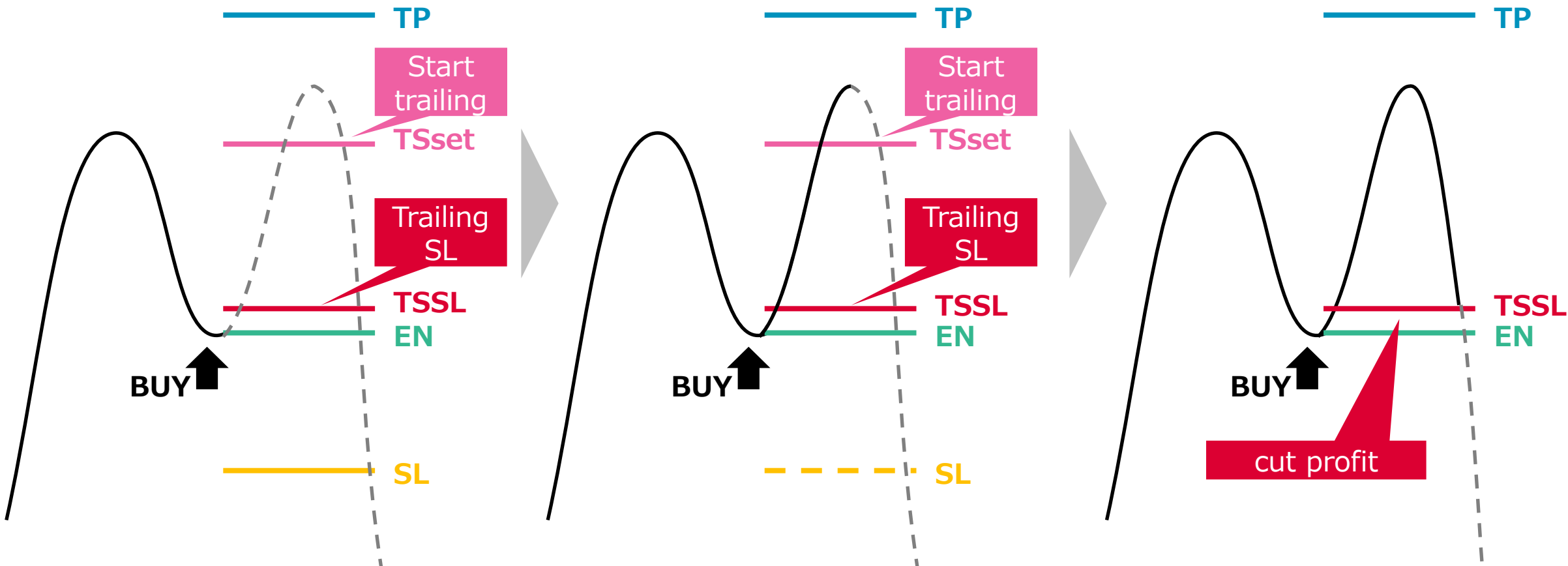


If the horizontal line and the candlestick are covered and difficult to see, Please adjust the blanks for SL, TP, and EN.

# Trailing stop function overview

## Functional overview

1. Set TSset and TSSL.
2. When the current price exceeds TSset, SL moves to TSSL
3. Profit cut is possible with TSSL





# Trailing stop function

The displayed Symbol is

- All brands
- Current chart issue can be selected

\*Refer to parameters for details

[All Exit/Cancel]  
Clear all positions/orders.

[Split exit lot]  
Enter the lot

Position Manager

Balance: 10027811 JPY      Gross Profit: -954 JPY      All exit/cancel      Split exit lot: 0

Symbol	Ticket	Time	Type	Lot	EN	SL	TP	Profit	Exit/cance	Split	TSSW	TSSet	TSSL
BTCUSD.	33171507	2023.05.29 16:36:09	Buy	0.43	27947.36	27717.66	28448.88	-954	x	x	OFF	0.00	0.00
BTCUSD.	33171506	2023.05.29 16:36:00	Buy limit	0.77	27846.50	27717.66	27975.34	placed	x		OFF	0.00	0.00
BTCUSD.	33171509	2023.05.29 16:36:12	Buy limit	0.77	27846.50	27717.66	27975.34	placed	x		OFF	0.00	0.00

Before trailing stop setting

After trailing stop setting



[TS SW]  
Trailing stop  
enable switch

[TS Set]  
Trailing stop  
starting price

[TS SL]  
SL line after  
TSSet starts

After setting the trailing stop, press the PM button  
You can also close Position Manager.  
(Trailing stop remains in effect)

# Troubleshoot

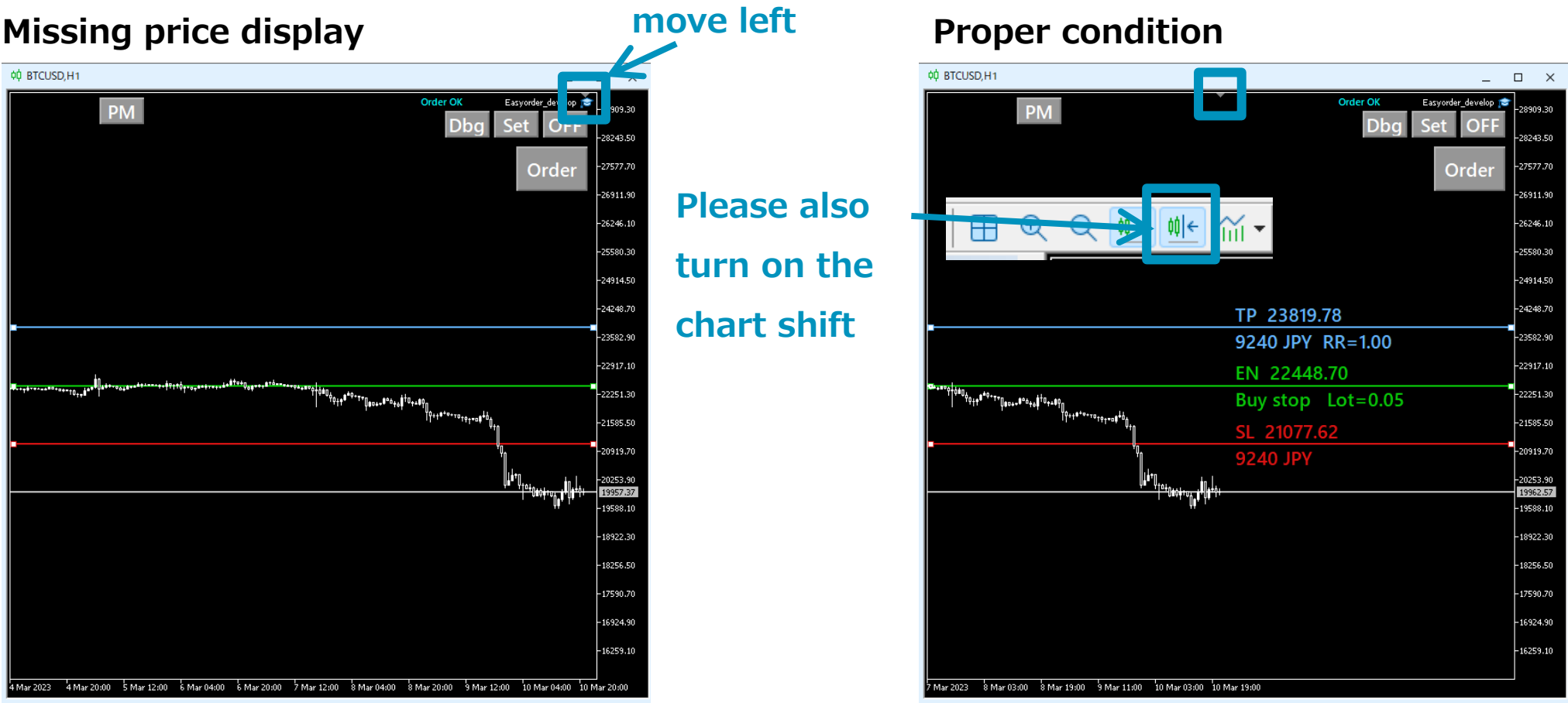
---

Q : Even if I press the Order button, the order will not be placed.

A : See the "Order Status Monitor" page of this manual. You can check the details.

# Troubleshoot

- Q : SL, EN, TP prices are not displayed.
- A : Use the mouse to adjust the ▼ position as shown in the figure.



# Troubleshoot

Q : SL, EN, and TP prices are detailed and cannot be ordered.

A : Explained below.



Depending on the broker,  
the last digit of the decimal point may be increments of 5.  
Example :

- 132.658 → NG
- 132.655 → OK
- 132.660 → OK

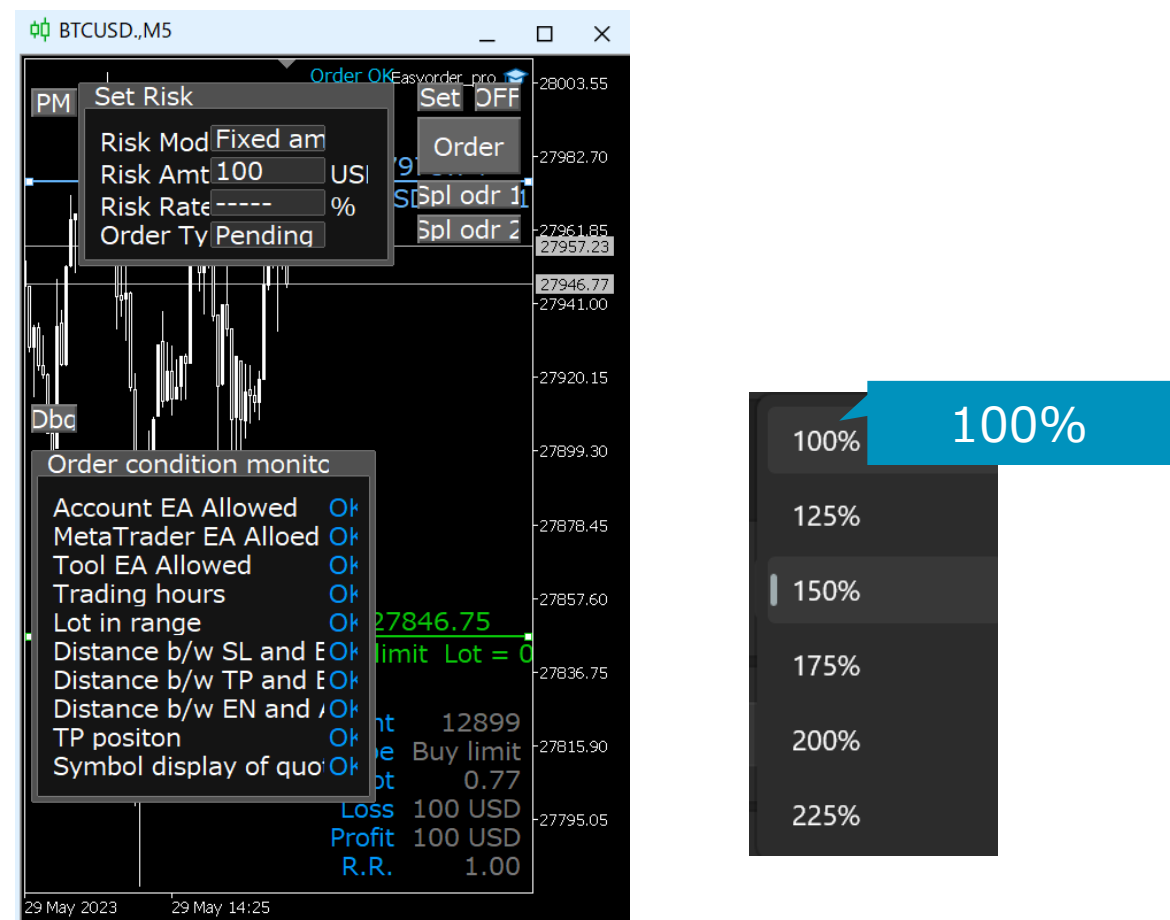
In this case, You can order by turning ON the following parameters.

Order condition monitor SW		ON
ab General settings		=== General ===
-----Position manager(Trailing stop)SW		ON
-----Symbol to display position managaer		Current symbol
-----Auto disp OFF when order is completed		ON
-----Lot rounding		Round down
-----Initial settings of order method		Pending order
-----Take profit line		ON
-----Digit SW(Set when order cannot be made due to digit)		OFF → ON
ab Risk reward fixed function settings		=== Risk reward fixed function ===
		OFF

# Troubleshoot

Q : It's hard to see because the characters are clogged up

A : Set the character display magnification of the display to 100%.



# Inquiry

---

If you have any questions or problems, please contact us with the following information.

Item		Example
1	Meta Trader version	MT4 or MT5
2	Broker	OANDA, XM, Axiory...
3	Country	USA, Russia, ...
3	Account type	Standard
4	Question	I can't ***.
5	attached image	Chart screen, operation history and log messages(this may help)