

PICTORIAL PERIOD PHASE PROFILER

[= =] Welcome	3
[> <] Principle	6
[> <] Concept	10
[> <] Construct	11
[> <] Overview PointZero	12
[> <] Overview SensorMap	13
[> <] Concentrate	14
[0.0] Role of Interest	15
[0.1] Intention	15
[0.2] Conventions	16
[0.3] Notation/ Roles/ Terms	18
[1.0] Interest by Role	22
[1.1] Directive Mind	25
[1.2] Turn by Translation	28
[2.0] Technical Fundament	29
[2.1] Logic/ Protocol	31
[2.2] Complexion Market	43
[2.3] PointZero	45

[3.0] Fundamental Technique	4 6
[3.1] Market	4 6
[3.2] Function	4 8
[4.0] RadioPhase	5 4
[4.1] Colors	5 4
[4.2] Terminology	5 5
[4.3] Buttons	6 2
[5.0] Indicator PointZero	6 2
[5.1] Fundament	6 3
[5.2] Functions	6 6
[5.3] Layers	6 8
[5.4] Integer/ Double	7 2
[6.0] Indicator SensorMap	7 2
[6.1] Fundament	7 4
[6.2] Layers	7 6
[6.3] Integer/ Double	7 7
[< >] Completion	7 8
[< >] Perimeter	8 0
[< >] Conclusion	8 3
[= =] Unifier	9 3

[= | =] Welcome

> hallo <

General Information:<https://www.mql5.com/en/articles/586>Information about specific Conditions/ Limitations of the MT-VisualTester.PointZero uses Fonts Consolas/ WingDings.

- Pips and Distances can be exclusively found on the right Price Column.

SensorMap uses Fonts Arial/ Consolas/ WingDings.

- Times and Distances are the framing Component of the Volume Band.

The Indicator Imaging is easily followable with Focus on two Colors:White = Open: Opening of Rangement = active Time-ComponentOrange = Close: Closing of Movement = active Price-ComponentDirections/ Positions: green/ redPhases: acc. Role 00 above

As this Indicator-Duo is with an own functional designed Time- and Price-Scale equipped,
it makes initially no Use of the MT-Scales. Please switch on in Options, if really of Need.

The synthetic Period-Creation of the VisualTester leads to an artificial Movement.
Please reduce the Visual Mode Speed, if the Signalling is too fast/ flashy.

22:49	×	MH				STEP		-	25
22:50	.	RH			84 %				25
22:51	×	RH	STEP	83 %					23
22:52			FULL			NULL	DN		20
22:53					89 %	FULL			13
22:54	.	RL	STEP			75 %	LIFT	UP	×
22:55			FULL	75 %		87 %	FULL	DN	
22:56			STEP	83 %		71 %		UP	+
22:57			LIFT	66 %	STAT	76 %		DN	
22:58					ROTO		LIFT		
22:59	.	ML	STEP	77 %	PART	71 %		UP	
23:00				68 %		64 %			
23:01			LIFT	62 %		68 %	STEP	DN	×
23:02	×	ML	STEP	67 %	ROTO	65 %	LIFT	UP	×
23:03	×			63 %			STEP		+
23:04			NULL				LIFT		
23:05	.	RL			ROTO	51 %	STEP		×
23:06	.	RL	LIFT	48 %	PORT	29 %	LIFT		
23:07	.	RH	NULL	27 %		46 %	FULL	DN	+
23:08	×	RL	LIFT	42 %		39 %	STEP	UP	
23:09				47 %		22 %	FULL		
23:10			NULL	27 %		44 %		DN	+
23:11			LIFT	47 %	STAT	24 %		UP	
23:12	>		FULL	21 %			STEP	LVL	>
23:13				28 %	ROTO	-17 %	FULL		+
23:14	×	RH		-6 %		-4 %	STEP	DN	
23:15				7 %				UP	
23:16				5 %		6 %	NULL	DN	×
23:17	×			12 %		17 %	LIFT		
23:18	.	RH		20 %	ROTO		STEP	UP	+
23:19	×	RH	STEP					DN	
23:20						35 %	FULL		
23:21	×		NULL	36 %	STAT	40 %	LIFT		+
23:22						46 %	FULL		
23:23	=	CYC		48 %	STAT			LVL	=
TIMES	-	POS	RANGE	OPEN	ROLE	CLOSE	MOVE	NAV	-TICKS

If you do not find the Visual Mode Option:

- Expansion of the Tester-Panel in Height should reveal it.

You can hide the Tester-Panel by Closing it during Test Run,

- but please close (*generally*) a Run by Stop via Panel (*bring back Tester-Panel, then stop Test Run*),
- instead of a sudden Close of the Chart-Window via x.

Appearance and Functions are identical to Demo/ Live, with following Exceptions:

- most left Period is not shown: no functional Consequence
- Changes in Indicator-Options require a new Test Run.
- Solution: have Access to functional Buttons on the Chart.

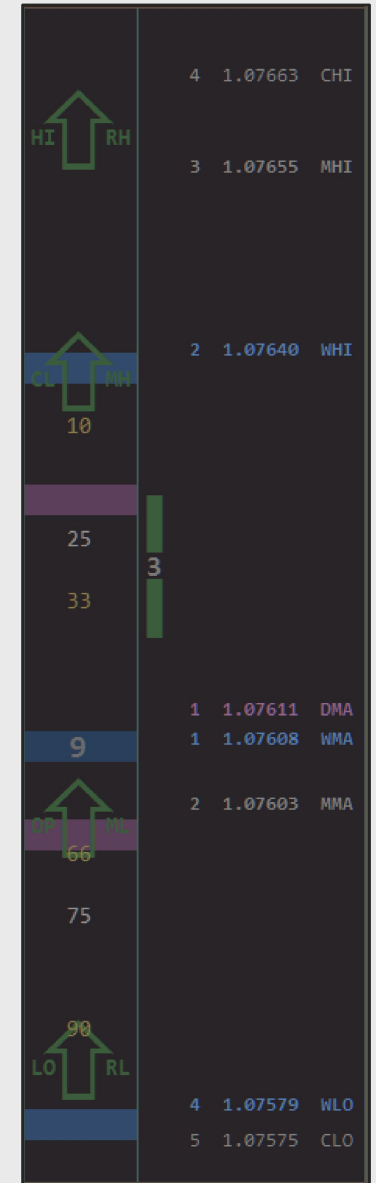
If you

save a Template with a loaded Indicator as "tester.tpl" in the Template Folder
it gets automatically loaded by the StrategyTester for Run with a second/ complementing Indicator.

Delete/ rename for different Test Runs.

The RadioPhase is a Standard-Meter, which categories and classifies by Measurement of Distances and Expansions.

Good Succeed!
Stay interested!



Specific Information:

This coordinating, defining, descriptive and interdisciplinary Compendium and Manual

- is Part of its functional Unit with its Indicator/s (Last Paragraph, *important*), and
- is compiled in fundamental-technical Form by discussed/ reasonable Definitions.

It constructs the basic Mind-Map, which enables a profitable Evaluation of the Imaging.

- Functions of Market = Subject of Interest.

We will stay most universal in specifying Definition and explanatory Formulation, and very precise in objective Contemplation of functional Correlations of the Complex.

Made for fast Reading Speed! Please dose and vary your Time respectively and perspectively.

Once followed consequently the Ordination, the Charts will reveal their conditional Content.

- Orientate +
- Navigate =
- Position.

Become *simplex* and *duplex* aware about what is Markets *trivial* Phase.

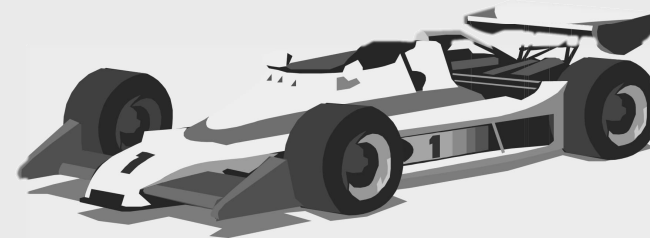
TOHLCV deliver every necessary and valuable Argument.

Good Findings!
Stay consequent!

EVERY ACTIVA HAVE A BIGGER ONE AHEAD.

© 2 0 2 3
LOG!C LABORATORY STUDIO.

RADIO
PHASE



PICTORIAL PERIOD PHASE PROFILER

[>|<] PrincipleConfused Roles Mirror

Market arranges in Time upcoming Phases according to the present Results of its Interest. Interactive Modulations of immanent Periods show in Reference to

Price

alter/atting frequentual leveling Capacity.

PointZero = resulting ProductApparition

Time

alternating sequential cyclic Ability.

SensorMap = effective VolumeFunction

of this Concept of Time and Price and describes Movements related to their own Range

[variable absolute]

[constant relative]

= how far moved ?

= how long moved ?

RadioPhase = respective perspective = TimeTable

indicating the present Activa by marking conditional Events = when which Action ?

setting a functional Relation to the presented Support/ Resistance - Motive = miss/ hit/ pass ?

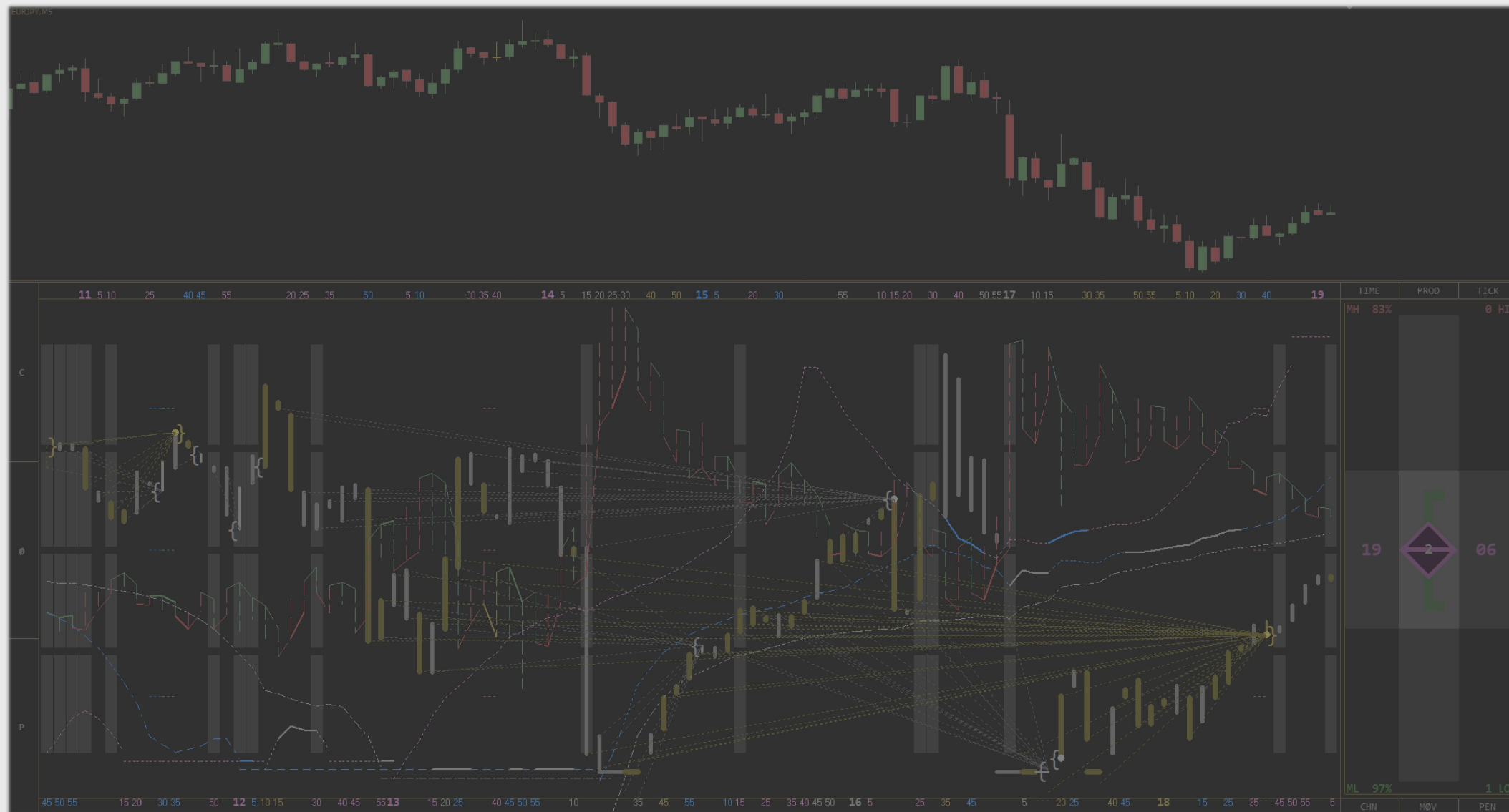
POINTZERO
[> <]
SENSORMAP

RADIO
PICTORIAL PHASE
PERIOD PROFILER
bHv2E

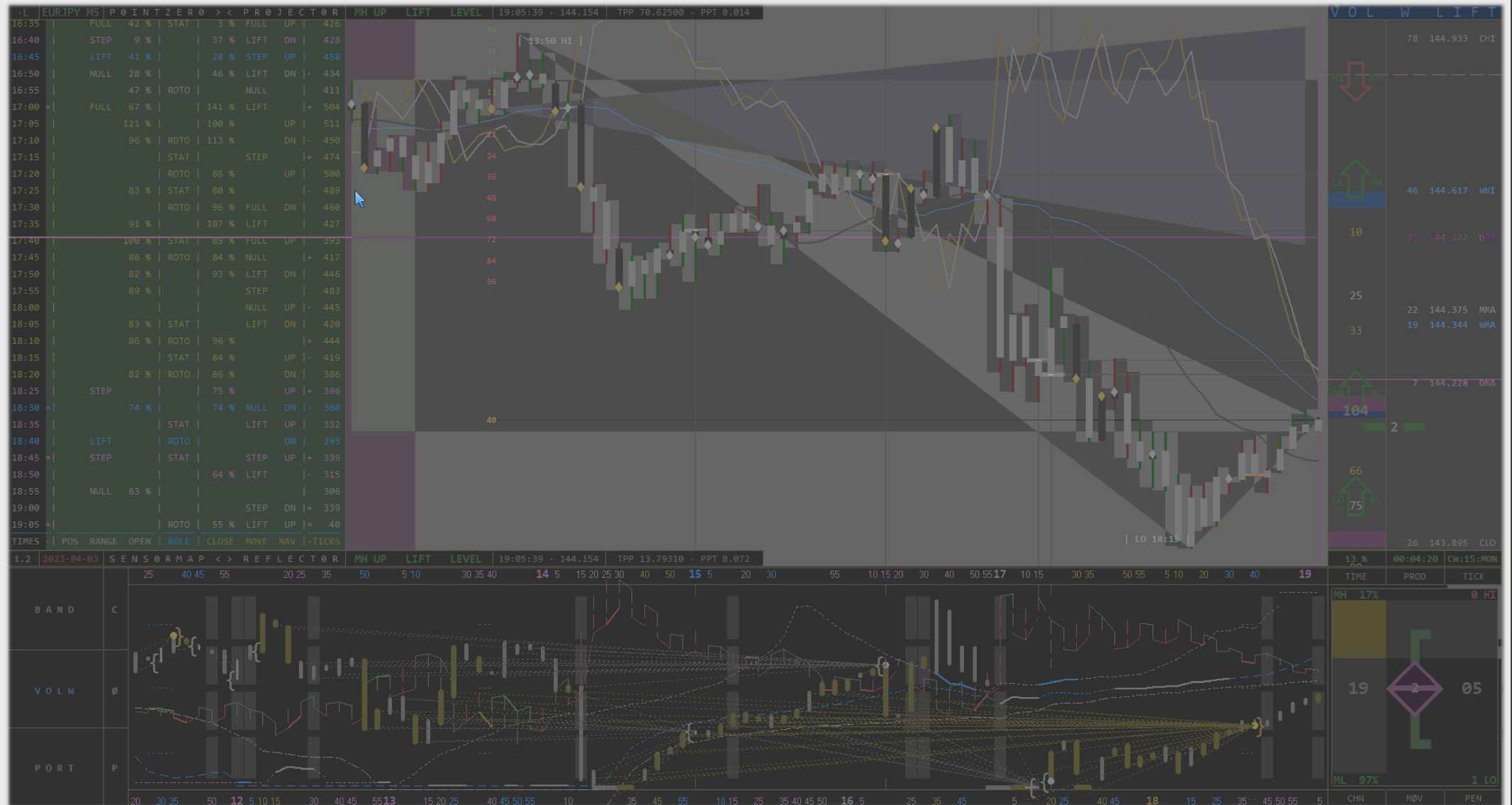
POINTZERO
[< >]
SENSORMAP



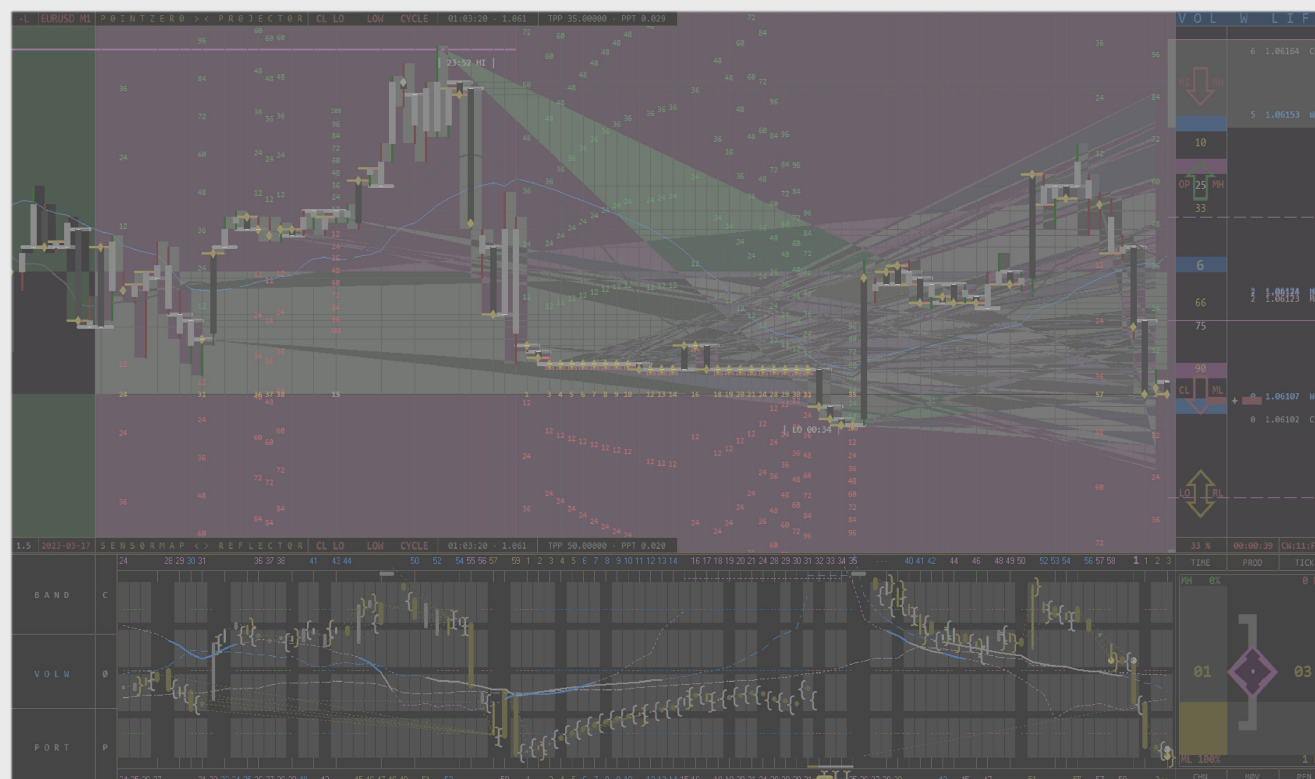
PointZero Price-Apparition



SensorMap Volume-Function



RadioPhase TimeTable

[>|<] Concept*Mask Mind - Role Turn**perplex - trivial - multiplex***F = [0.0] Role of Interest****F = [1.0] Interest by Role****F = [2.0] Technical Fundament****F = [3.0] Fundamental Technique****A = [4.0] RadioPhase****A / [5.0] PointZero****A / [6.0] SensorMap****Q · [=|]=] Conglomerate****Legend:***= equal
/ differ**F = Function
A = Apparition
Q = Qualification***Appearance - global**

The Mapping is based on recursive Patterns in dynamic oscillating Systems by mathematical Relations between a Period and its standardized Environment.

Function - local

The Sensitivity of this Indicator Duo describes alternating/ interventional Activities because of its direct Potential-Measurement out of the TOHLCV - Coordinates and its conglomerated Visual, which works as a Whole = absolute Signal = present Sum of sequential valid Conditions.

[>|<] Construct*Consequence + Sequence = Sentence*

The Color categorizes Chart Dimensions and Objects, to make their Classifications visible:

<u>Tone</u>	<u>Phase</u>	<u>Move</u>	<u>Range %</u>
White	MN	Null	0 - 25
Violet	D1	Step	25 - 50
Blue	W1	Lift	50 - 75
Orange	H4	Full	75 - 100

Role 00: zero-dimensional perplex Categories of Classification(perplex = phasic = impulsive = absolute relative)

Every Period describes a framing Range with a categorizing Move of Interest.

The sequential Move Zero

- notes a Period, which shows no absolute or relative Price Movement

and/or

- defines an Edge with an Open or Close at High, Low or Center.

Sequential Function is related to periodic Appearance.

Definitions

- Period: Coordinates = Time Open High Low Close Volume
- Tone: Color = Flexion/ Tension
- Phase: Activity = Period/ Tone
- Range: High to Low
- Move: Open to Close
 - Move-High: Open if down/ Close if up
 - Move-Low: Close if down/ Open if up
- Support: Open calls Phase, white, look left to right, [<
- Resistance: Close fills Phase, orange, look right to left, [>]

The relative Position of a Period can alter due to the ongoing Channelmove, even if the Position shows no Offset as absolute Pricevalue. Likewise, an absolute Value of Price can have a new Position, although its relative Position in the Channel did not change.

Open and Close define as positioning and navigating Events the Status Support or Resistance of currently processed Levels and Dimensions:

[>|<] Overview PointZero

Time Price Channel

The D1/ W1/ MN - Channel consists of Shells around the ranging Center, which reflect the periodic Alterations by its Separation in High-/Low-Bands and central Moving Averages.

Period Event Notation

Positions, Expansions and Distances are measured against the own Range, as also against the Channelrange, of which a Period the Body and (Part of) the Move is.

Special Events

- Close/ Open at High/ Low/ Center (colored Notes)
- Break of weekly Channelbands (as Range Percentage)
- Move 0 - 100 % of Range: Open to Close = High to Low (blue dotted Trend)
- Move Proportions (white Values)
- Offset of Move - Center against Range - Center (central Colortrend)
- Parity of actual OHLC and previous OHLC (white Trend on Period and Offset Arrows on Scale)
- Parity of up and down - Wick (blue Stars)
- limiting Tick Values (Fraction Hits, green/ red)

Pivot Period Ports

D1/ W1/ MN - Pivots create to their Portlevels a colored Background as cyclic and leveling Phases.

MOVEMENTS OPEN at Support [and] Close at RESISTANCE.

Variable	Value
[SUB] Time Price Channel	false
[SUB] Period Event Notation	false
[SUB] Pivot Period Ports	D
.....
[PRICE] Auto Focus	false
[SCALE] Period Range	true
[SCALE] Period Move	true
[PROJECTOR] Panel Display	Protocol
[REFLECTOR] Universal Mask	true
.....
[TOP] Echo Bars	false
[BOT] Echo Trend	true
[> <] Automatic Projections	Scales + Projectors
.....
[C0] Clock	true
[C2] Buttons	true
[C2] Scale	true
[C3] Colored Bands	false
[C3] Colored Periods	false
[C3] Close Signal	false
.....
[= =] Descriptions	false
[OFF] MT4 - Scales	false
.....
[0] Protocol Roll: 0 Func / 1 Bube	0
[4] Width Period	4
[9] Font Size	9
[0] Offset Scale	0
[0] Shorten Digits	0
[0] Time Deviation S/T (hrs)	2
.....
[0] ScreenShot Interval (min)	1
[0] ScreenShot Calib Height (pxl)	0
[0] ScreenShot Calib Width (pxl)	0

Layers

- Projectors, Ranges and Scales (set PointZeros in Relation to their own and to the actual Channelrange)
- Mirroring of Movements as Bars and Trendlines, Coloring of Bands/ Periods
- geometrical Chartstructure with Universal Mask

Additional Benefits

- a positioning Autofocus and a Logbook as directional Protocol
- a systemic Clock informs about periodic Phases (Pivot and Realtime)
- a Screenshot Function (Button on Chart and as automatic Interval)
- an adjustable Price Column and automatic Chartfitting

[> | <] Overview SensorMapPrice Time Channel

Multidimensional, equalized/ flattened and mirrorable Timingband as Matrix for Time, Price, Tick and Averages in definable Appearance Option.

Moving Averages

The Price Averages work as ranging Levels, each in its flattened Channel.

They reflect the Movement as periodic Pricelines and show the Time of Price in Cooperation with the framing Clock.

Period Event Notation

Price is **noted** (in Relation to W1)

- as Bars, Clips [] and Streams (with Scales by ZeroLink),
- as Value (directional and white: Null/ Support, orange: Full/ Resistance),
- as Period Moves (Color set by the reached Level in Channel),
- as High- and Low-Range Trends (related to MN, Color directional).

PRODUCTIVITY accelerATES [and] decelerATES BY QUOTE.

Variable	Value
123 [POTI] ZeroLink Setup	Bars + Clips + Streams
123 [POTI] Productivity Sensor	true
123 [POTI] BullBear Compass	true
ab	
123 [TIME] Time Periods	true
123 [PROD] Price Positions	false
123 [TICK] Tick Background	true
ab	
123 [CHN] Channel Moves	false
123 [MØV] Moving Averages	true
123 [PEN] Period Ranges	true
ab	
123 [ON] CHN not inverted	true
123 [ON] MØV not inverted	true
123 [ON] PEN not inverted	false
123 [ON] PRC not inverted	true
ab	
123 [ON] Fill Channel Rectangles	false
123 [ON] Total Productivity	false
123 [= =] Descriptions	false
123 [OFF] MT4 - Price Scale	false
123 [OFF] MT4 - Time Scale	false
ab	
123 [8] Bar Width Tick	8
123 [2] Bar Width Period	2
123 [1] Channel Move Width	1
123 [3] Channel Move Style	3
123 [1] Period Range Width	1
123 [1] Period Range Style	1
123 [2] Stream Style	2
123 [9] Fontsize Price	9
ab	
123 [0] Time Deviation S/T (hrs)	2
123 [0] Initial Timeframe	current

Special Events

- PointZero as situational Scale (15/ 50/ 85%, blue: cyclic, green/ red: leveling)
- Close on limiting numeric Values (Fraction Hits bold),
- Tick Deviation to prior Period > +/-15% (Background bright)
- interdimensional Crosses (Color Overtaking) and periodic Triggers (Line dotted) of Moving Averages
- Objects beyond their respective Channelband are lined up at Chartborder until Reentry (= Time is ticking for this Component)

Layers

- framing periodic Timedisplay (Side of Open/ if Zero at both Sides, Color: Channel Position)
- simplified Servertime Clock (Circulation = Period / 8) with relative Positions of Move-High and Move-Low on actual Period Range
- the conditional BullBear Compass indicates situational Phases with 3 Symbols and 4 Aggregate States
- on the Productivity-Cube

Additional Benefits

- individual Appearance Preferences
- a detailed Definition of Objects and Functions by the Descriptive Mode (Tool Tips)
- adjustable Window Size, seamless functional Complement for its origin opposite Pricechart

**[> | <] Concentrate**

Simple Language. Narrow Structure. Impacting Imaging. Fast Internalization. Full Comprehensibility.

The Signal Density is related to Markets actual Phase, chosen Timeframe/ Security and Components.

RadioPhase generates as resulting Composition a defined Setting of Support and Resistance.

[0.0] Role of Interest*tempus fugit exorbitans*

Ideally Preparation is of more Work than the executed Work itself.
Thus use given Space for personal Developments.

The Character Part.

What is known, is to handle.
Protocol + Translation = Decision

Protocol = Functionality
Translation = Communication
Decision = Position

**[0.1] Intention***Aut viam inveniam aut faciam*

Intention of this Creation was the Fact of a not followable Recognizability of Markets Movements on default Charts.
Without a clear analytical Possibility, any made monetary relevant Conclusion is more Presumption than Definition.

Unfollowable Sequences of apparently functional, independent clocked Conditions create in escalational Levels an alternating, continually changing visual Disarray, without reliable recognizable Anchorpoints as orientational Factor.



The Subject of this defining Compendium and contenting Explanations is regularly to follow on any Chart,
just by Use of this Indicator: its Task also is, to plot the Results of Market, of course.

Primarily it presents the Functions producing these Results, by logical Process of an examined, intrinsic Ordination.

What you can expect here, is a fluent and followable Function of the Content + Context = Complex.

The RadioPhase is a Duo of 2 Chart Masks. Both, PointZero as also SensorMap, are fully functional Standalone Indicators.
Their Cooperation widens Perception and Comprehension of the Signalling of each of both by completing the own Perspective.

As I am by external Reason *inclusively* that, what is wanted from me,
but internal *consequently* that, what I want from me, *I am of interdisciplinary Nature*.

I work exclusively by rational Reason = Result. Time is more than just expensive. You surely agree.

[0.2] Conventions

Speech is Code: Terms are variable, Notation is constant.

Mind = Market

impulsive
operative

Decision Maker

Code

Construction = complemented

disordered = complicated
ordered = complex

Function

Complex

Misunderstandings are Result of an inconsistent functional Definition of examined Terminology by communicating Parties (by any Reason).

In Exchange interested Positions argument and talk with similar Terms

- without conditionally meaning the Same by own Sense and
- without sequentially being aware about that Fact.

Reason is everyones pure Individuality and Orientation = Personality.

Result always is a

- Function = impulsive Operation as Consequence by Condition.

This impulsed Function operates/ results

in our Sense

= Definitions are of equal Interest
= constant functional,

against our Sense

= Definitions are of **unequal** Interest
= variable **dys-**/ functional.

Thus we define Rules to orientate on, because communicative Inconsistencies overall weaken the Individual (Trader) and empower the Collective (Market).

Personal Irritation leads to Need of Support = Market is opened.

Intrinsic Core of my Speech is Latin, and this helps tremendously:

T
R
A
N
S
L
A
T
I
O
N

Even though I use simple Language: if you selectively have Doubts if you have understood correctly, then the Sense = the valid Understanding can be found in the latin Origin/ Root of the respective Word/ Term.

Latin is correlated to a rural deep functional and philosophical Understanding that reflects in many Ways Intelligence, Sense, Thoughts and Work of Scholars and Scientists.

Reason is its unquestionable Function in Ordination of Structures, based on its most fundamental functionally organized Grammar.

Not longer actively spoken, but kept alive as it is extensively used as scientific Language, especially in Relation to

**Dedication and Definition of
Locations and Conditions of
Apparitions and Functions
(Medicine, Natural Sciences).**

Hierarchies, Nomination, Ordination, Terminology wouldn't exist the Way we know without Latin.

***It explains actually our World. And it fits wonderfully for an ordered Definition of Market.**
Support your Understanding by an active conclusive and flexible Research.*

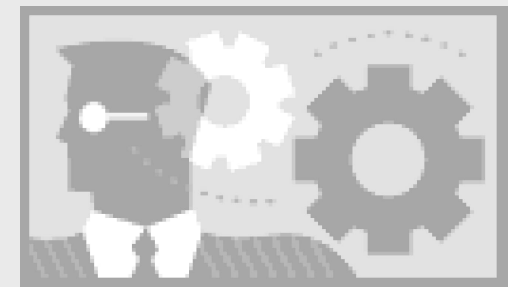
[0.3] Notation/ Roles/ Terms

universal/ multiplex/ trivial

Generally I focus on a manageable Amount of condensed Terms as Base of an inner ordinating Nomenclature. Its Extent is related to the Dimensions of Functions of the Complex.

Thus an Adressing of Definitions is first Means of Choice.

M
I
N
D



Cause:

continuous Protocol of not-own Images by Interest:

- simple Existence of external Protocol = simplex = Impulse
- Projection potentially exists, but
 - not, if not recognized.

Effect:

continuous Protocol of own Images by Interest:

- per plural Existence of internal Protocol = perplex = Resonance
- Reflection potentially recognized, but
 - not, if (not-own = external) is not existent and/or
 - not, if (own = internal) is not responsive.

functional Protocol

Function:

- continually mirroring Reflections
- by sequentially alternating Imaging
- with all resulting, potential Consequences.

Pretty much, what is related to Market itself and its motivated Interests = Activas/ Recruits.

Terms are introduced. Supposed missing Definitions are in the next Paragraph/s to find.
Flexions build superordinated Sequences within a Paragraph. *Keep an Eye out for them.*

Cause: Complexity demands formulated Simplicity = simple coordinating Formulations.

Method: Extract the Content by own Elaboration of contentual Context (in Sum the Complex).

Effect: Construct an own Map by own Interest = internal Image of Market, from perplex to multiplex.

Translation:

(project and synthesize)

Image of external Protocol(equalized and reflected)Function:Content and Context as Compound
(Unit of Indicators and Compendium)is the functionally sentenced,
because sequenced and conditionedDefinition of a fundamental-technical Complex.

D E F I N I T I O N

There is no Need to learn every single Component. All is systemwide functional present and defined.

Better focus on the Logic and develop a mindful Image of Markets fundamental-technical Construction
by elaborating and evaluating the following Correlations and Dependencies Step by Step.

Like this move by yourself actively the presented Way of Market: from PointZero over Null, Step by Step, to the final Lift up to the Full Range of own Interest.

Take a potential Examination of own/ common Definitions into Account (*personal Maintenance*).

Hold (*if needed jump back*) and repeat, if your logical Result does not match with the presented Ordination.

Resulting Conclusions become present by visually combined Exercise:

- let the Chart/s run and orientatiate/ navigate between Manual and Visual.

Potentially *not before* tomorrow:

- serious Mindwork needs deep Sleep to drain its neuronal Networks!



It is helpful *not to wonder about anything.*

Acceptance is Support:

It opens the own Mind for

Potentials = Interest.

*To build a reliable Fundament, gentle Reader, we start from Zero.
I gave my Best by Consequence, Mind, Love and Precision.*

All without further Ado!

Take Five! What you miss now you will miss then.

Supporting Interest is the strongest Impulse and Motivation for you.

Already a Fifth

PHASE
RADIO
RADIO
PHASE

[1.0] Interest by Role

When Mathematics is made visible, it presents our universal World.

Beauty comes from Within. Like any other Function.

Appearance = Function by Recognition

Universe (lat.) = One in equal Exchange = Existence

The universal Definition of a Potential negates fully its Absence.

As inseparable intrinsic Consequence it is to define as an Absolute.

Absolute = simple Existence = simplex (= Protocol)

0 / I

simplex = Impulse,

- external of and
- unalterable by

own (= internal) Interest.

No one successfully alters (an Existence of) external Impulses:

- Negating their Existence does not affect their Function.
- Accepting their Existence indeed does affect their Effects.

Ever was. Ever is. Ever will be. Even valid for Collectives/ Societies. No Interest = End of Market = Life.

Ergo Quality of Quote and Ratio of external Impulses classifies

- Functionality
- Dysfunctionality

= Productivity of own Operations.

Market (and *Life*) is a

Composition of inner and outer Interests:

Internal Interest / External Interest
 Service Client / Service Provider
 Currency left / Currency right
 Brokerage / Trader
 Societies / Economies
 feminine / masculine
 Creature / Nature
 Business / Consumer
 positive / negative
 Seller / Buyer
 black / white
 Shop / Customer
 etc. / etc.

0 / 1

Principle = Exchange of related Interests = Potentials.

As Correlation between at least two interested Positions,
 an exclusive Contemplation and Analysis of absolute Metrics
 is factually and generally insufficient.

And a wrong Approach.

To know, what and how much to exchange, actual Conditions (*Interests*) are

- scaled/ quoted/ rated/ ordered (*or not*) = relative Metrics.

Cause (and Opening) of a Decision is

- an unequal Relation of internal Interest and external Interest.

Effect (and Closing) of a Decision

- is absolute, and
- relative Result.

/ i o n

Function (and Result) of a Decision is:

- positive/ correct = Profit, or
- negative/ wrong = Loss;
- equal = Balance.

Function = initiating Cause + resulting Effect.

Become universal informed about both functional Sides of Market.

[1.1] Directive Mind*Principle of a corporal (4th) Dimension*universal Sentence (= Definition):

- Potential = Scope of Ability
- Interest = Scope of Capacity
- Potential = Interest = Absolute

trivial Sequence (= Development):

- Function = Scope of potential Interest
- *trivial, because* = Scope of (Scope and Scope)
 - *lat.: trivial* = (one taken out) of three given Ways

meant: Decision for one of three *potential* Ways of Education*means:* Choice of Lifepan = own Function.

- *trivial* Function = Relative

Protocol = (Method of) Communication

- Impulse = Initiation = oneway = projective = internal Interest
- Operation = Process = twoway = reflective = external / internal Interest



Function = Attentiveness/ Consciousness/ Mindfulness

- Scopes/ Volumes are quoted by dimensioning/ divisioning Scales (*Ranges of Potentials*).
- Sequences are
 - classified by Rate and/or
 - terminated by Period.

Evaluation of the present Outer Situation (= *Evolution*)

as Survival Need/ Will by Ratio =

conditioned Sentence

- of internal own Interests
- and external other Interests.

Invisible and unseen,

because hidden inside
an own Body
and as Mind
of *transparent* Existence.

Even own Mind usually remains dormant and mostly unrecognized.

It is an inner Interface = Attitude without own Face

- (*uses its corporal Face: express your Self*).

It is our inner Being, separated from the Outer World within our Body.

- Projection = a Look in the *Mirror* presents its Surface = apparent Result.
- Reflection = a Look in the *Past* presents its Attitude = functional Result.



RadioPhase projects flexible and reflects any individual/ personal Chart Recognition

- by classified Presentation of categorized sequential Events,
- by adjustable layered Filtering of distracting Influences (*Noise*),
- by clear and conditional Signalling of sequential Alternations,

to ensure Traders rational Function = Evaluation of the Presence via Big Picture.

Recognition of the own Function

- reflects the universal Function by Natural Law
- and enables reflective as also projective Conclusions.

As separate/d Dimension, the fourth Dimension correlates with its Outer Dimension.
OF which it is intrinsically dependent and in which it resolves, in Case of its own End.

END =

- Balance
- Equalization
- Compensation

of both-sided Interests:

- if both are equal,
- or one of both = 0.

Please recognize!

It does not contradict, that the fourth Dimension already is defined as Time (*really correctly*?).

Every Embodiment = Manifestation is exactly that: incorporated = separated Time.

TO RECOGNIZE IT

REFLECTION IS NEEDED
THERE WHERE IS SEEN

AS PROJECTION OF
AN OWN REFLECTION



Time is to define as first Dimension, because it is as impulsive Function Cause of Anything.

Unfortunately, Human (*inclusive Scientist*) has an uncomfortable Habit of not correcting Mistakes while thinking they weaken (*absolute perplex*).

With Regard to Time this is not even a *real* Mistake. Reason for its *numbered Order* is Timepoint of Recognition of its Effects, and this was Tenthousands of Years later than Recognition of the other three Dimensions by needed Development of an orderly Understanding.

Three were since the Beginning existent, Time was added without considering, that it is Cause of all. *As Sequence of every personal Universe.*

Its Place is the Front. Where is no Time there is only Potential and no Room. Market has recognized this. Time has its first Position in TOHLCV.

It is the Opener. But it needs an Impulse. Given by a whole Volume of Potential. Less is non-valid. Here like /there. All is One.

[1.2] Turn by Translation

Appearance is external designed = given.

Function is internal defined = taken.

When an Open appears, its Close defines.

Translation = *from /there to here*

/there			Cause	Input	Interface	:	technical	Appearance	:::::	perplex	Sequence
C	F	E	Experience	Market	electronical	::	sequential	Complex	::::	simplex	Phase/s
E	C	F	Observation	Practice	technical	:::	projective	Content	:::	complex	Image/s
F	E	C	Formulation	Theory	fundamental	::::	reflective	Context	::	universal	Word/s
here			Effect	Output	Protocol	:::::	fundamental	Function	:	trivial	Sentence

Role 01: multi-dimensional multiplex Complexion of Translation

(perplex = Cause + two Functions + Effect = Function of two Functions = trivial)

Target of Visualization is the periodic Definition/ Description of

- a projective Scale:

Range = processual Direction, defined by Open = initial Position, and

- a reflective Rate:

Move = processual Navigation, defined by Close = final Position.

Divisioning a Period in functional Parts (Range and Move) results as actual Sentence (*Definition*) of its actual Sequence (*Development*).

A Sequence like: Open on Center / Range down with Lift-Move down / and Close at Low is set in Relation to the modular activated Environment, to define the present Status = Sentence. Automotive, conditional and flexible Presentation by RadioPhase.

[2.0] Technical Fundament

Autonomy is dimensioned by Apparition

Automatisms are recognizable by Function

Non-valid Event =

- correct Time + wrong Location/ Position
- wrong Time + correct Location/ Position

Thus any Event only comes into Existence by meeting both Conditions (*Einstein*).



Inseparable and logically consequent is the following perspective Premise:

Time always comes first, because separate (= *personal Universe!*).
Nothing is

- earlier or faster,
- slower or later.

Especially not a Change of a corporal Position (*by any Reason*).

- Time = Cause
- Space = Effect
- Impulse = Function

Any Condition is consequent and never more.

And never less, even if it is Result of a prior Time.

Time is decisive Premise. It is the Sequence. **Con** = follows with.

It stands still without Impulsion = non-sufficient Energy-Invest.

The Existence of such a non-Period is recognizable
with a new Entry of Time (= new Impulse = new Open).

Thus it also runs in its Absence (*while standing still*).

Reason for this Recognition is our Sense related to that, which
is conditional = Effect of Cause of noted = sensed Impulse

= after by Time/ behind by Position.

Absence of Time is regularly to find on any Chart.

Functional related Term to this universal Status is Patience.



[2.1] Logic/ Protocol*Stable Architecture opens Perspectives.**Terms define themselves from within.*

Initially we decode = decompose the Term "Function" and examine with this Example (*not only*) the universal Mind-Mapping of the operated Nomenclature by Divisioning Terms in their separate functional Parts.

Cause Func:

- Call/ Echo = Communication, recognizable by Frequency of Impulse (*Wave*)

Func stands [eur] for Radio and describes an Information Exchange.

It is Definition of the Fact, that a Function only exists by *at least* two conditional Factors.

Without Echo = Reflection an initiating Call has no Function and wanders unaffected unidirectional as long as Resonance is missing (*Way of any Impulse*).

Basically is a Function the intended Effect of an impulsive Cause. It has a variable correlating Effect at Moment of Recognition (*resonating/ sensing Body implied*).

The Moment of Resonance = Resistance is decisive for Alteration of its Effectiveness:

- non-functional <=> functional (off/ on).

Result of oneway Cause: Protocol = simplex = Impulse = Call.

Function = Func /t /ion

- Func: Cause = Sentence dimensional Factor: /t
- /ion: Effect = Sequence



Available Scope and appearing Grade of Resistance
are decisive for Direction and Strength of Reflection/ Resonance:

- Scope = positional Orientation/ directional Navigation
- Grade = Responsiveness by Time/ Price/ Condition

A Reflection is

- of spreading Nature (e.g. *Light/ Sound 1*)
 - as Phase/ Wave and
- projects Expansions as Spectrum/ Spread, or
- of pointing Nature (e.g. *Laser-Pointer 2*)
 - as Partition/ Particle and
- reflects Distances due to its particular Precision;

and depends of initial Properties of projective Appearance

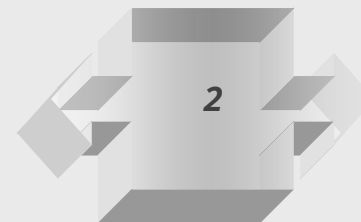
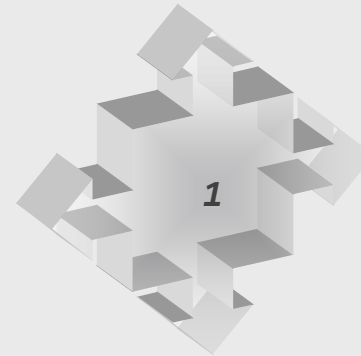
- of initial emitted Complements
- = external Argument: Charge/ Impulse,
 - define Scale/ Rangement;

and depends of respective Function (simplex/ duplex)

- of operative located Complements
- = internal Argument: Motivation/ Interest,
 - define Rate/ Movement;

= externally initiated = impulsed and then internally operated = resonated.

Result as twoway Effect: Protocol = duplex = Resonance = Echo.



Factor /t:

- Time = projective respective Sequence, exclusively recognizable by functional personal Interface

<u>/t = 0 / 1</u>	<u>Directive</u>	<u>Time = Cause of Interest/ Function</u>	<u>int</u>	<u>ext</u>	<u>Location = Effect of Interest/ Function</u>	<u>n-directional</u>	<u>Function</u>	<u>Method</u>	<u>Protocol</u>
Call /t	constant	internal by Emittance/ external by Recognition	sup	res	external Navigation of/by internal Position	n = uni	Impulse	defined	simplex
Echo /t	variable	external by Emittance/ internal by Recognition	res	sup	internal Navigation of/by external Position	n = bi	Resonance	designed	duplex

Role 02: four-dimensional universal Scope of Interest

(universal = like we exist = 1 inner + 3 outer Dimensions)

Above: the fundamental Function of a Decision = Division:

- universal perplex = $2 \times (\text{simplex} / \text{duplex}) = 1$
- trivial multiplex = $2 \times (1 / 2) = 1$

The fundamental Construction of Market is of universal, trivial Nature: $0 + 2 \times 0.5 = 1$, whereas 0 is the dimensioning **Center** of the Equation.

This Center creates 2 Dimensions by Intersection of an available Scope, which are supportive/ resistant as responsive Function related to its initial impulsed Interest.

What was elaborated, is the functional Creation of a

- Decision by Interest = Intersection of a potential Scope in potential Dimensions
= Cause and Effect = Function of any Potential = Existence.

*Human Center of this Equation is defined as Skin.
Main Reason for Location of its physical Senses.*

Senses are embodied Instruments and sometime Feelers and Pen.

They come as Indicator into Vibration by Sensing the Wave, and translate this Sensation by special Imaging into an apparently Recognition according to their Function.

They make a Creature (*Body of Life*) capable to position, orientate and navigate itself (*have an individual Function* = Interest) in its



personal Universe = Complex of Inner and Outer World.

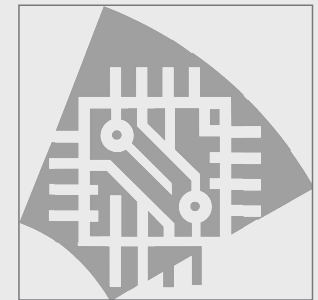
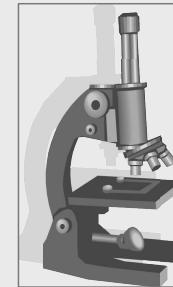
But Mankind can also bring not-recognizable Waves into profitable Recognition.

By external, supplementing sensoric Instruments:

They make us see the Things, we are not capable to see.

They let us fly and cruise and do whatever we want,

because finally they let us survive by showing us our Way back Home.



That is the Importance and utmost Benefit:

to orientate and navigate = calibrate our Body-Position in our spatial Environment (*our Coordinates in the external World*) related to an existent Interest.

Pretty much equal, what is valid for the Term "Body" of our Selves and a "Body" as Period Move = *both are equal Components of Market*.

Sentence Func/t:

Bodies are by own Interest of C-communicating Nature.



They are a **F**-unction because of their Responsivity (*Ability*).

simplex Address: **F = C**

Variety of Function by Variety of R-esponsiveness (*Capacity*) by Time/ Condition/ Position.

duplex Address: **F = R / C**

Extension by sequential/ dimensioning Time Factor Impulse (/t = Premise for F):

Communication = interested Exchange / impulsed Interest

impulsive Effect = **Responsiveness internal Interest / Impulse external Interest**

The above Correlation is the major Fundament of every advertising Attempts of **B** to **C**.
(*Business to Consumer* = *unidirectional simplex Impulse* = *Stimulation* = **pro-motion**)

Testat: Take out the Factor Time and evaluate anew the Result!

Solution: _____ = absolute conditional!

Communication = **Responsiveness internal Interest / external Interest**

= *the One Reason for all unsolved Problems in our World,*
and thus sufficient Reason for any interventional Attempts.

Communicational Differences often enough cause serious Distortions.
Likewise they are Reason No. 1 of every not-fully-potential Productivity.

The above Correlation is the major Fundament of every regulative Attempts of **E** to **S**.
(*Economy to Society* = *bidirectional duplex Operation* = *Rectification* = **per-mutation**)



The Activity of an institutional Event is not depending of the Factor Impulse!

It is the Impulse! (see above: Absolute)

It is by apparent Design and functional Definition (**A/F**) of cyclic/ leveling Nature.

And Intent:

- by creating Support and Resistance where needed, to ensure
 - Balance at most and
 - Survival at least

according to **own** superordinated Interests.

Market is kept under Control by Intervention:

- By *having Control* over the Power-Button of the Construct:
Simplex Protocol **on/ off** (Cycle).
- The *theoretically* adressable Deviation of Price-Values is *around* Infinity:
Duplex Protocol **max/ min** (Level).

The strongly impacting, volatile Appearance during monthly Events
(*Red News/ monthly Transition Phases*) presents this Obviousness evidently.

Institutional Movements are still vibrating even if not any longer personally on-line
(*Strings produce continual tonal Waves*).

One Performance gives defined Impulse (*Note*) for the next several Days up to one-two Weeks.

To bring Economy and Society to bloom (*Open on Support*).
Or *in special Case* by pulling the *Emergency Brake* (*Close on Resistance*).

Continually balancing Interest of Society against Interest of Economy and vice versa.

Always defined by present Interest and relative Productivity, as impacting as precise.



$0 + F \times (R / C) = 1$, whereas $F = C$, and 0 is the dimensioning Center of the Equation, delivers

not less than 2 resulting Dimensions = Internal / External.

- Mankind calls them Inner World and Outer World.
- Market calls them Support and Resistance.

Reduction to

- $0 + R = 1$
- (given, full Potential)

results in

- $1 - R = \text{Func}/t$
- (released Quote of potential Scope).

That means: Market invests **one Unit** and releases = produces with this an Effect, which depends on the Scope of Reflection of its Call (Interest).

Scope of Resonance = potential Rate of Investment.

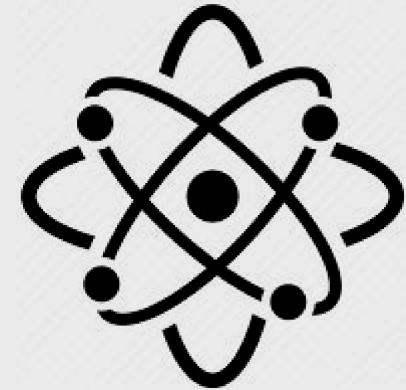
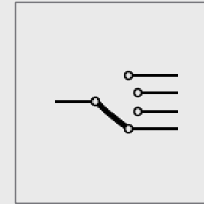
What was elaborated, is Fundament of the Three-Steady-States-Rule miss/ hit/ pass, which defines Markets Work with Levels.

Beside the generic Creation of Ranges, which comes into Operation as follows (not to forget the *Ion*):



Effect /ion:

- ION, as *extended* computational Notation:
 - I = on / O = off / n = Variance
 - = n-variant Boolean, conditional functional, computed
- An Ion is
 - an elemental Particle with a net electrical Charge.
 - the resulting Creation of a Charge/ Potential by variable Accumulation of Complements = by Adding/ Subtracting Electrons with an alternating Charge to a neutral Atom/ Molecule.
- Function = relative Charging of functional Complements/ Components



Derivation of Protocol by Body-Structure = Scope of Function: defined = stated, designed = composed.

Complement	Protocol	Potential	initial Charge of /ion	resulting Charge of Func/t	Func/t	resulting Func/t/ion
Atom	simplex	int	absolute, defined	constant by defined Charges of Atom and Electron	Impulse = Call	Autonomy by Condition
Molecule	duplex	ext/int	relative, designed	variable by designed Charges of Molecule	Resonance = Echo	Automation by Condition

Role 03: three-dimensional complex Function of Complements
(complex = 1D + 2D = 3D)

Atoms and Molecules are the populating Elements of our Universe/s and predestinated to explain, how the Function of the universal Code of Structure is constructed:

An Atom is the Unit 1 of its own Universe.

Atoms exist independent,

- but not unaffected of Atoms/ Molecules.

Atoms project as autonome Sender,

because their Function only comes into Existence

- by an Offer of affectable Complements and
- related to own Impulse/s and external Responsiveness.

Molecules exist in Dependence of

- an Amount of Offer of potential Atoms and/or Molecules, and
- their own individual Charge/ Interest/ Potential.

Molecules reflect as functional Automat,

- which has own projecting Interest (Charge), and
- which is alternated by Reflection of external Impulse/s.

Thus they have a Sender- and Receiver-Function.

Function of Call = Response = Echo = Translation:

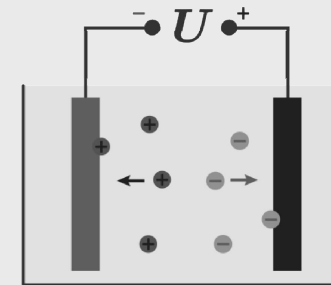
- Atom plus Electron = Ion [+]
- Molecule plus Electron = Ion [++]
- Ion minus Atom = Molecule or Atom or resulting Charge/ Potential [-]
- Ion minus Molecule = Molecule or Atom or resulting Charge/ Potential [--]

The Ion-Transport is the basic Routing/ Transmission Protocol of informatic Data.

It works as the moving Function of electrical Current,

in electric Powerlines as also in Computer Processors,
and everywhere, where Voltage lies on,

by being alternated in Dependence of
an electric effective Power-Consumption = Workload = Interest = Function.



- 2 / - 1 / 0 / + 1 / + 2

Energy charges (*exclusively*) as Value-Packet/s = Investments (*Units*).

If the Workload does not exceed the needed Effort of the targeted Energy-Level (*assigned Potential Shell of Complement*), it is effectless (*in that Relation*).

A resulting Effect is related to the implemented Workload, Differences remark the currently Resistances.
The Difference between set going Effort and needed Invest appears as (Alteration of an) electronical Potential.



Modulation is required due to the Needs of Voltage-Control of the electronical Construct (*Short Circuit Prevention*).

Electric Current communicates as protocolling Interface by:

- internal Interest = Amperage (*constant*) = Invest of 1 Unit Workload
- external Interest = Resistance (*relative*) = Impulse / Invest of Workload
- resulting Potential = Voltage (*variable*) = (*effective*) Impulse of Workload

Voltage = Amperage x Resistance
 Amperage = Voltage / Resistance
 Resistance = Voltage / Amperage

- constant Cause - relative Effect = variable Function
- Conductivity - Conductance = Conduction

= 1 - Resistance = produced Potential

Note:

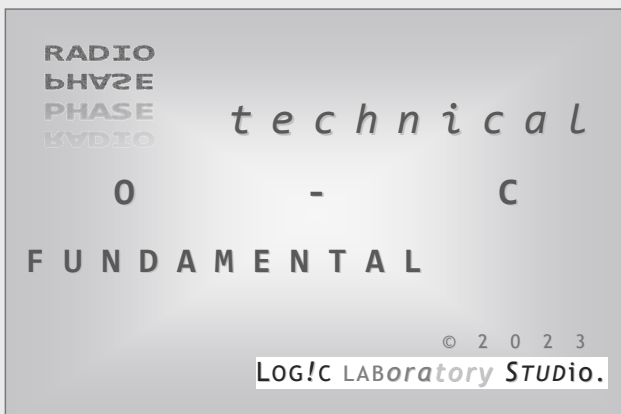
absolute = relative / 0 = 0% / 1 = 100%

Thus we can define as absolute Equation
without any further Conflict/ Contradiction.

What was elaborated, is the Aspect of

- Support as fundamental = generating (*Time*)
- Resistance as technical = generating and modulating (*Price*)

Complements (*Interests*) of the functional Complex.



Sequence Func/t/ion:

How trivial and universal two separate Contemplations of one Term are matching by arithmetical Content.

1 - R = released Potential = Func/t = Ability = Definition
 1 - R = produced Potential = /ion = Capacity = Development

1 - R = Function of Func/t/ion = Potential = Interest

Recapitulation: trivial Sequence = Function = Scope of potential Interest

▪ Scope of (Scope and Scope) = Function of (Func/t and /ion)

perplex = $0 + 2 \times (s / d) = 1$

trivial = $0 + 2 \times (1 / 2) = 1$

multiplex = $0 + F \times (R / C) = 1$

1 - R = potential Interest = Function = Support - Resistance

= absolutely given - relatively taken
 = sequentially given - conditionally taken

Function = Charge/ Deployment of a whole Unit (Quote), which is automatically rated by Resistance.

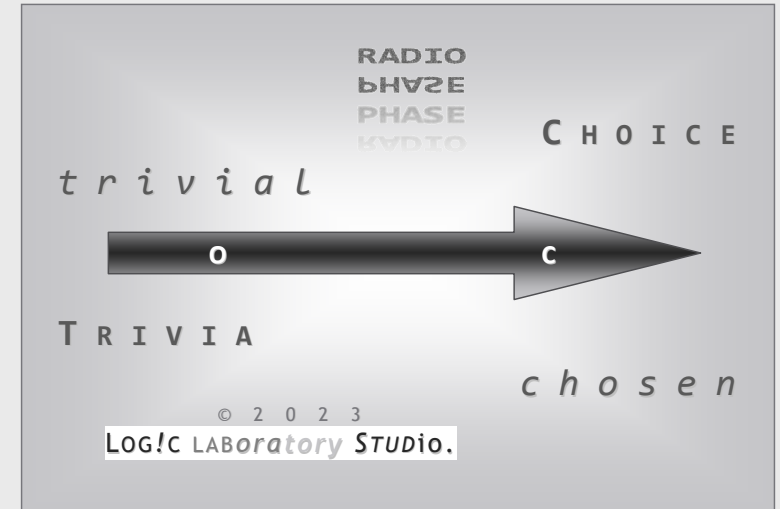
q.e.d.

All separate Definitions describe partial and in their Sum as Term Function the trivial

Adjustability / Buildability / Communicativity / Directability / Executability / Fragility / Generality / Hideability / Institutionality / Jurisprudence / Knowability / Levelability / Manoeuverability / Neutrality / Operability / Permutability / Quality / Responsivity / Sovereignty / Transportability / Universality / Variability / XYZ

of Markets functional Conditions.

Now we can examine our evident Reasoning of their Result:



Conclusion by Definition of Term:

Market is the Function out of Itself.

It is

- a sequentially impulsed, n-variant Boolean
- in=as an electronical, informatic/ computed Network,

conditionally impulsing = by Call

its productive Phases (*Direction by Positioning Time*) and

continually resonating = by Echo

actual State of its Product (*Orientation by Navigating Price*).

Markets projects every of its Activas by Scale,
and it reflects every of its Activas by Rate.



It is of internal Function and external Appearance.

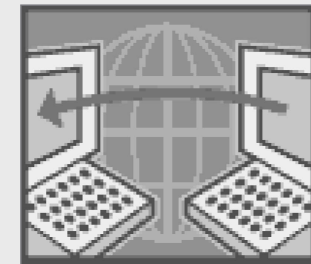
It is inner and outer Dimension.

Thus it has to define a Protocol as communicative Standard.

Such a Protocol is strongly related to the operated Interface of Signal-Transmission (electric Current), which by itself comes in Form of a Circuit/ cyclic Phasing.

This Functionality fits as Potential-dimensioning Factor /t, because the alternating Frequencies of electric Current already are functional like an (*atomic*) Clock:

- both intrinsically moved by defined Ion-Transport.



Standards are normed by Condition = Definition = Rate of Interest.

Interest of Market:

- Productivity, ensured by functional Definition
- Survival, ensured by apparent Design

Market = Man (impulsive operative *live Mind*)



[2.2] Complexion Market

I cannot see the Forest for the Trees..

Complexion = Construction of complementing Functions

Function = constant/variable divisioning = Phase

Phase/s = alternating Re- / Activity

- by sequential and conditional Modulation
- of Frequencies/ Cycles and Alterations/ Levels

Modulation = electronical Charging of Phases

- by Clock = via Release/s of Impulse/s, followed
- by Condition = by internal leveling Adaption/s



primary: Opening of Phases (Rangements) as directing Cycle:

- Release of Time (1D)
- I = Initiative/ Impulsion
 - Protocol: simplex/ uni-directional
 - internal oneway Charge = **Scaling on/ off**
- functional Result: OC - Rangement of HL
= Direction of Range by Time

secondary: Closing of Phases (Movements) as navigating Level:

- Regard of Price (2D)
- = Operative/ Alteration
 - Protocol: duplex/ bi-directional
 - external twoway Charge = **Rating in/ out**
- functional Result: HL - Movement of OC
= Navigation of Move by Condition



I and O define the Method of informatic Operation:

I = active unidirectional Call = Scale = Function F

initiative simplex Modulation = Impulse-Generation

O = passive bidirectional Echo = Rate = Apparition A

operative duplex Modulation = Potential-Alternation

The following Map divides the Property-Composition of Object and Subject in A-Apparition and F-Function.
As fundamental dimensioning Variety of Market (*by Composition*) *both match with or differ from* the Other.

That means: an Aspect can function like it appears/ is designed, or it functions in a variable other (*defined/ designed*) Way.

#	Variety	Property	Potential	Phase	Apparition-F	Method-F	Apparition-A	Technique-A
A	Object/ive	Apparition	variable	Level	designed Oscillation	Echo = Reflection	as=by Cycle/ Level	visualize Operation
F	Subject/ive	Function	constant	Cycle	defined Sequence	Call = Projection	as=by Sequence	operate Visualization

Role 04: two-dimensional simplex Composition of Complexions

(simplex = both are Projections (as Apparitions = Indicators))

To stay unrecognized, Market communicates its Coordinates most possible soundless/ moveless/ nondescript.

A Stop indicates a mapping Point with an adressable Function, due to its defined Appearance = Apparition.

[2.3] PointZero

Perspective Pause

<u>Instrument</u>	<u>PointZero</u>	<u>SensorMap</u>
Method-F	by Category	by Division
Method-A	by Division	by Category

PointZero = dimensional Balancing/ Equalizing/ Mapping Method

- = Interrupt/ Reset of A/F-Phase-Impulse
- = immediate/ intermediate Stop of Rangement/ Movement

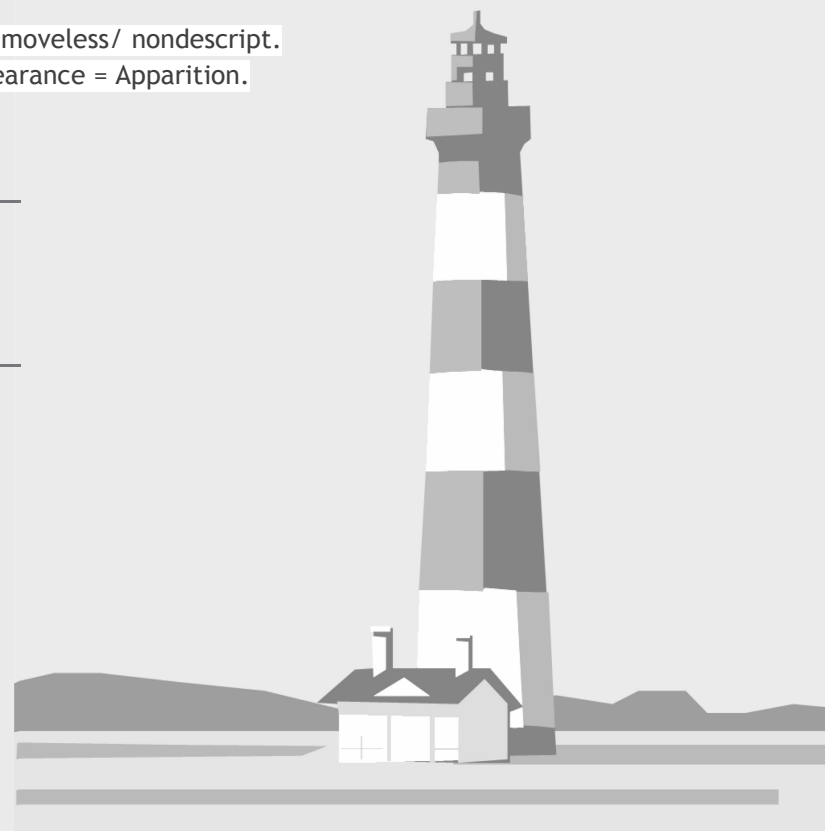
projective Function = Scaling

sequential/ directional Phasing

reflective Function = Rating

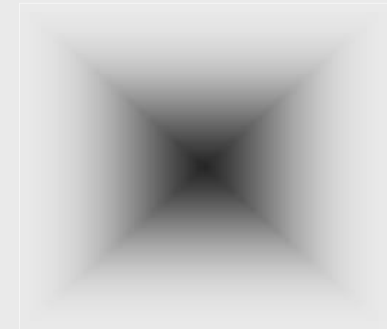
navigational/ positional Leveling

PointZeros are conditionally to find on nearly every Timeframe <= D1/W1.
The Importance of an Appearance rises according to observed Period-Price-Relatives.



[3.0] Fundamental Technique*Support is fundamental - Resistance is technical**Open where needed. Close where feeded.*

given Time = external Impulse = simplex Function
 taken Time = internal Operation = duplex Function

**[3.1] Market***The Role. Multiplex.*

Support is generated by current (*periodic*) Modulation of
supporting Conductivity (*on/ off*).

Uninfluenceable by outer Impulse it is
 by itself external of everything else.

simplex: 0 / 1

Resistance is generated and modulated by current
Resistance of Conductance (*more/ less*).

Internal conditioned Decision by Motivation / Impulse,
 valid for every Activa/ Collective/ Recruit of Market.

duplex: - percentage Quote

Support is given as=by sequential

Phase of Potential (simplex) by Open Stamp,

defining a situative and present Aggregate
 = *empty 100 % of full potential Interest:*

as such it defines a Projective as a potential Whole,
 which is given and which can become more or less filled.

Resistance is taken as=by conditional

Potential of Phase (duplex) by Close Stamp,

defining a situative and present Aggregate
 = *filled percentage Quote by resulting Interest:*

as such it defines a Reflective as a resulting Fraction/ Portion,
 which is taken by a, more or less Filling of an initial Scope

(the Rest of potential Support is not taken).

Open gives internal Support as=by an external Potential.

Close takes internal Potential by/of an external Resistance.

Potential Interest

- internal Support - external Resistance

Support

- internal Interest - external Potential

Resistance

- internal Potential - external Interest

External Potential is internal of Interest.

Internal Potential is external of Interest.

Potential is of Interest.

Role of Interest

external

POTENTIAL

=

internal

SUPPORT

[3.2] Function

If there is a Body, then there is a Function.

Period.

Unit 1 in Markets own Universe is the Period (*sequential*).

A Tick notes also a Period (until next Tick) as

- non-constant = impulsive, but still sequential, because frequential Phase.

Open appears in Front of Close and is the defined Support.

It is Definition of the valid Time of a Period. Beside, but as Cause for its Price-Notation.
If there would be no Open, there consequently would be no Price. Until a next Open notes.

The last Price is already Past and does not reflect any longer the present Conditions.
Thus the Existence of a valid Price depends of an opened Period.



The static Open defines exclusively the Support Level by own Appearance and following Direction until Close of Period.

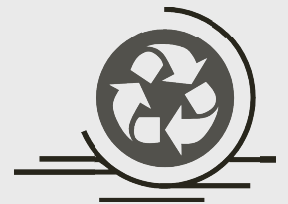
Like the rotatory Close functions exclusively as Resistance-Level, defined by quoted Modulation of itself until next Open.

Each of these two presents its own State of Activity, because the simplex Impulse only initiates the Phase (*by Time*).

If the Phase is opened, the duplex Protocol is active and valid for both Complements (*by Price*)!

That means: Both can become apparent like the Other = A/F - Role Turn, multiplex**.

** because: (1D simplex + 2D duplex) x 2 (A/F) = 6D.



Please recognize: 6D in Relation to TOHLC,

Volume adds 3D by

- 1D Frequency + 2D Alteration = 3D Oscillation
- (absolute + relative = total Productivity).

Market = 9D = Time[Frame]Work = T[OHLC]V = 1D + 5D + 3D

The RadioPhase resolves all of these potential Behaviours and presents the Activas.

Testat: Please justify the Statement "+ 5D".

Solution at End of Paragraph

For what all this is useful, we will elaborate as follows, and derive the functional Body of a Period of the functional Body of the Outer World:

the upper Side of the World is above our Head!

No Matter, where we walk (not on Hands) on our Planet:

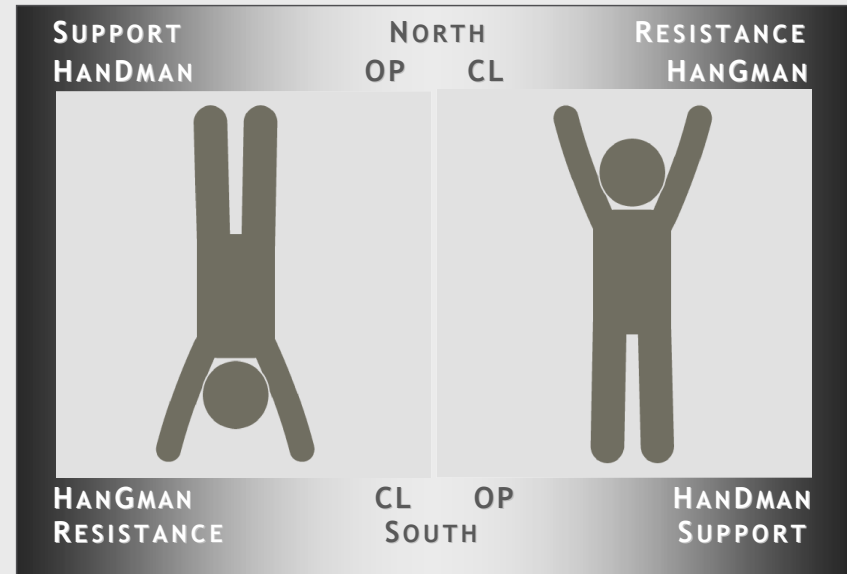
On the Southern Hemisphere the Bottom is below the Feet, like on the Northern.
If there would be no Bottom, there would be no Support.

Result then would be a Movement, which would not end before next Resistance:
a potential deadly Conflict with the own Existence.

In such a Case (*disappearing Support*) Market would experience a surprise Fall, which understandably is Desire to avoid at all Costs.

Many surely know the History, as the Swiss Support changed the Sides, which was exactly this (*and not exclusively happened*) horrific Situation.

<p><u>MARKET</u> = 9D</p> <p>TIME[FRAME]WORK</p> <p>T[OHLC]V</p> <p><u>1D + 5D + 3D</u></p>	<p>times ?</p>
---------------------------------------------------------------------------------------------	----------------



Thus at latest since this economical Impact, Market was successively organized to arrange itself its Bottom = Support.

To stay in Charge, and not like before, potential bottomless.

Currencies are by Reason = Interest under steady institutional Surveillance:

- by own Will to survive =
- to ensure stable Economies/ Societies.

Because Maths is as its moving Result by Definition Physics, Market uses the Bottom as Support, until it arrives at the next more or less resonant Resistance to work with, and/or its Target.

!Independen/t of any Phase and defining a fundamental Perspective of a Period

Open is the earlier = lower Side of a Period (*Feet/ Throne/ Root*) = Position,

Close is the later = upper Side of a Period (*Head/ Crone/ Tree*) = Condition.

Because Perspective is out of natural Body-Location/ Movement/ Position:

The **Bottom** is below the Open
= Start of Movement,

which defines it as Support

= it lets Feet stand on it
and *supports* (...)

(static functional).

The **Ceiling** is beyond the Close
= End of Movement,

which defines it as Resistance

= it inhibits/ prevents a directional
Ongoing of an actual Movement

(rotatory functional).



Head instead of Hand, because of own Control (Hand = Move, Head = Decision)!

reflexive = having not expected/ known/ seen

= autonome (impulsive) Protocol

Fingers burned

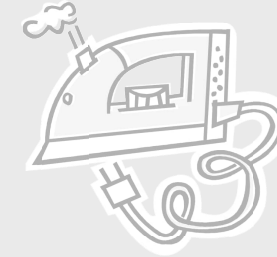
Effect: automatic

reflective = having expected/ known/ seen

= conditional (operative) Protocol

Head cool

Effect: rational



Reflections are desired.

Reflexes are addressed (*and by Reason regularly tested*).

This functional precise Definition is without any inner Contradiction and creates a One-Way System for Market itself by Function, because accidentally

it enables a mathematical Construction as administrative Bridge between

Stock: Shares develop (*in best case*) one Way = Rising high/ low.

Forex: steady Alternations intended

- to hold Balance
- to ensure stable E + S.



The Movement from Feet to Head (Open to Close) is unidirectional, regardless of the operated Framework.

No Matter where it is working - North or South - Market always knows, where its Feet are:
below, its own Close designs them, its own Open defines them.

By giving a Period a Center, it is made transparent, because it is as Division (= Decision)
now sameway structured like its surrounding Environment

- = potential +/- Scope of Resonance:

Open and Close are not longer only positioning against another:
They position themselves also above or below the central Division.

Or *not*, then their Position = Center.

And a Center defines a = 1 *separate* Dimension (= Decision = Bank/ Joker, Solution Testat above).

This describes related Movements (OC) in their superordinated Range (HL) and translate
the Chart-Composing Period to the Chart itself as composed Movement of Market.

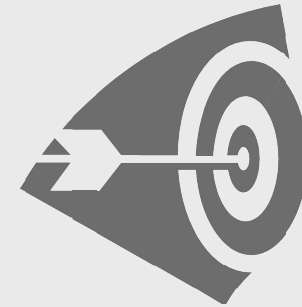
Stay aware, that a Chart is two-dimensional, but Market not: 1D Time + 2D Price = 3D
(..at least, and identical with the outer World).

The Plot is by technical Limits (Pictures are usually 2D) never complete and its real Structure
has to be derived by indicating it with appropriate, complementing and productive Tools (1 + 2 = 3).

To support the (*resulting*) visual Resolution of this Double Feature:

- in up-Market: *Bull Support* is at the *lower* Side of the Open,
- in down-Market: *Bear Support* is at the *upper* Side of the Open,

RadioPhase is/are equipped with special functional Objects/ Instruments, to have a respective Orientation.



Recognize, how precise Market works same Time on any/ both Sides of its actual Range.
And that is of pure Logic: its Work is a Currency Pair. Mirrorside = View of the Counterpart.

Note: Definition respects the usual Convention of the formulated/ regarded first Currency-Complement!
 This Perspective is logically linked with the Open State of a Security! *Please draw own Conclusions.*

What Market does: it makes an Offer, which is for some acceptable (*enter it = part*) or not (*stay out/ leave = port*).

Those Decisions are ideally supported = with Fundament by clear Indications presenting Potentials = Chances and Traps.

Which Entity of Market (*corresponding Phase with respective Category of Move*) actually is arranged to make an Offer, is clocked according to followable Sequences as its internal Phases. *One Scale rolls all.*

But of Course it does not allow any deeper Look in his Books of Plans and internal Results beyond public Pronouncements (Keyword: Surviving Will). Central Banks do not speak freely, if at all (*see above*).

Thus a Trader needs/ wants to identify Bottom and Ceiling by its chosen Indicator.
 In best Case as early as possible, but of Course at latest in Time.

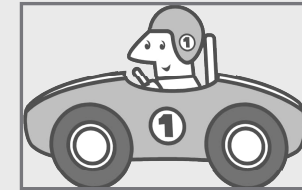
RadioPhase accomplishes that automatically.

- Proper defined.
- Outmost flexible.
- Overall universal.
- As early as possible.

How to operate, and how to read and understand, what is projected, is Subject of the following Remarks.
As before, major Premise: if contentual complex, do contextual simple!

Function defined = Appearance to design.

Halftime behind



RADIO
 PHASE
 PHASE
 RADIO

[4.0] RadioPhase*Internal = constant = translate sequential Decision**External = relative = recognize functional Condition**Potential = variable = evaluate protocolled Position*

Production Process.

[4.1] Colors*There is a Reason we do not see the World just in Black and White:**Colors indicate Interest and Value.*

All background-layering Colors are mixing themselves in functional Manner by cooperating complementary Colortones (blue/ orange, violet/ green), and are conditionally inverted by the Density-Filter and optional layering Components.

Inversions cooperate in equal functional Way with the activated Background.

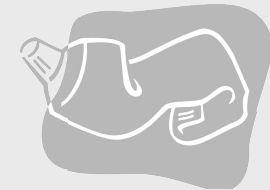
The Ground-Color Gray indicates conditional Balance/ Equality/ Center/ Non-Relevance/ Non-Activity and/or similar.

Result of these Techniques is a tonal functional Picture, which is

intersected = geometrically organized

- horizontally: leveling High-Low Direction, and
- vertically: cyclic Open-Close Direction.

It creates a Support-Resistance-Environment, which is used as Matrix to plot on special indicating Layers = to visualize its Actions within this Environment.

**RADIO
PHASE**VIRTUAL REALITY OF
FUNCTIONAL APPARITIONCONCENTRATION ON
ESSENCE OF CONSTRUCTproduction process

A gray Gap notes a gray Gap. Gray Gap = opaque Wall = like a Nebula.

If you contemplate (*just as transparent Example*)

- Markets Tendencies to hide and to protect itself from your Eyes, and/or
- recognize a sufficient wide enough grayed-out Range for a productive Movement,

then the Conclusion at Appearance of such a Situation is clear, because already defined.
Just by colored Background in Conjunction with an interested Mind (= *your Interface*).

- Sequence = Impulse-Phase
- Response = Quote/ Rate of external Potential/ Interest
- Sentence = Definition of internal Potential/ Interest

Situations present themselves as that, what they are.

RadioPhase is a conditional Standard-Meter and defines as such a sequential Standard-Template.



[4.2] Terminology

Claviature/ Palette

The Nomenclature redefines and is translated in Code and Description. Term = Function = Formula

Terms are given in Accordance to the recognizable Function of an Appearance and this Way
in their most possible shortened Form directly by their given Name a standardized Definition.

Assignments are sequentially conditioned:

- Any initial defined Relation can periodically become assigned to opposite complementary Factor/s (= 18D+).
- By knowing that, such superordinated periodical Sequences are visually traceable over Time.



M	Appearance	FUNCTION	Term ordinates	Function formulates
GLOBAL + LOCAL	Alteration	PHASE	Sequence	Impulsion/ Potential / Production
	Bar/ Candle	PERIOD	periodic Phase	functional Term universal valid due to combined Data Packet TOHLCV
	Price [PointZero]	ABSOLUTE	apparent Price, leveling Aspect	in Relation to previous Time-Price-Condition/s (close-sided/ Volatility)
	Price [SensorMap]	RELATIVE	functional Price, cyclic Aspect	in Relation to present Price-Time-Condition (open-sided/ Periodicity)
	Wick HL	RANGE	High to Low = Level Time by Volume	Expansion of highest and lowest Price in Phase/ Wick = Lifeline
	Body OC	MOVE	Open to Close = Price Cycle by Time	Expansion of first and last Price in Phase/ Body = Movement
	small Body	NULL	Move / Range = 0 - 25 %	extends Time Expansion => Trace-Trace => opens Cycle
	small medium Body	STEP	Move / Range = 25 - 50 %	throttles Price Expansion => Trace-Trend => opens Level
DIMENSION	large medium Body	LIFT	Move / Range = 50 - 75 %	throttles Time Expansion => Trend-Trend => closes Level
	large Body	FULL	Move / Range = 75 - 100 %	extends Price Expansion => Trend-Trace => closes Cycle
	vertical Dimension	CYCLE	Time-Cycle = moving Price OC	Moves are ranging : Movements also have High and Low
POSITION + NAVIGATION	horizontal Dimension	LEVEL	Price-Level = ranging Time HL	Ranges are moving : Rangements also have Open and Close
	Doji (and/or similar)	ZERO	escalated Null: Zero Movement	Pricemove levels until relative/ absolute Resistance
	Support	OPEN	Feet of Recruit: valid Support opens Activity..	invalid : Open against Resistance: not full = reduced Result achievable
	Resistance	CLOSE	Head of Recruit: valid Resistance closes Activity..	invalid : Close with Support: not finished = expandable Result achieved
	ongoing Direction	STATOR	not turned Movement (stationary Move)	Support , esp. at Transition of Cycle-/ Level-Phase
	turning Direction	ROTOR	turned Movement (rotatory Move)	Resistance , esp. at Transition of Cycle-/ Level-Phase
	positioning Direction	GATOR	escalated Full : Transition of Phases	passing (part/ port) a Phase-Gate as Stator or Rotor - Caution
	horizontal > vertical	TRACE	ranging Activity (cyclic/ leveling)	Trace is the Ace of Position (Open calls Range/ Move)
	vertical > horizontal	TREND	moving Activity (cyclic/ leveling)	Trend is the End of Direction (Close fills Move/ Range)
	Open outside prior Range	GAP	Trend if Stator/ Trace if Rotor	Cycle-/ Level State of Phase/ Potential
	Open inside prior Range	LAP	Trace if Stator/ Trend if Rotor	Cycle-/ Level State of Phase/ Potential
	no Deviation = no Gap	TAP	March in Place = marks Time	sequential Time-Price-Position (PointZero)

Role 05: one-dimensional trivial Translation of Complexion

(trivial = Content + Context + Complex = 1D + 2D + 6D = 9D = multiplex)

Individual Organisation and personal Style define preferred Trading-Timeframes:

An universal valid and contextual firm Definition of Trend and Trace has been developed as follows:

Initially the Sequence was arranged in Accordance with the observable Movement in a superordinated Range:

- Null and Step = Trace (initial 50% of Movement)
- Lift and Full = Trend (executing 50 % of Movement)

The 3D-enveloping = 2D-overlaying Structure of Range and Move obscures their separate Functioning (*Full notes Range and/or Move*). While filling the Old it can prepare the New (*Law of Productivity*).

RADIO
PHASE
PHASE
KYOTO

Market works in Phases

*what is Phase,
stays Phase,
until its Phase
ends .*

© 2 0 2 3
LOG!C LABORATORY STUDIO.

We find here one of the strongest Effects in Attempts of Concealing by Market.

Overall Understanding by given Picture of a Candle is mirrored to actual Realities (*see above Role 05*).

<u>global</u>	<u>Candle</u>	<u>local</u>	<u>Period</u>
outer	Body	is inner	Move
inner	Wick	is outer	Range

Role 06: three-dimensional mental Crossing of Complements
(mental = related to individual Understanding = confused by mirrored)

Market reduces its Appearance to the Movement, to distract of Existence of a directive Range.

This by serious Reason, like we have developed.

Thus further Studies resulted in a Switch, according to the observable escalative Function by Position in Range:

- Null/ Step/ Full = Trace (initial Range)
- Step/ Lift/ Full = Trend (operating Move)

Caesura

The central Fundament of *every* Construction is the 3-Steady-States-Rule:
two Dimensions, divided by a single Level. Symmetrical Construct: -1 : 0 : +1

- Construct is a Membrane, dividing two Dimensions (*e.g. Cells*) as permeable Layer to ensure Communication/ Exchange.
- Principle of Life: Transport of Life-Essentials (*Interests*) between the connected Complements (*Inner World / Outer World*).

This Way an internal Tipping Point is generated (centered Level 0).

Note: Calibration on Tipping-Points = Sensitivity of Indicator.

A Level has an indifferent State = two potential States, until it is defined as actual State by Appearance of Open with following Confirmation of Close.

Note:

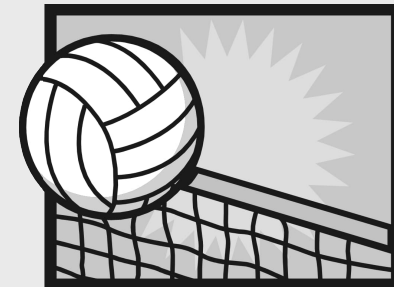
A similar Construct is the Double Slit Experiment, which defines Light as Wave and Particle, until it passes the decisional Slit.

According to the Adjustment of the Slit both Outcomes are possible.

We find this Construction-Property in every Component
(Time Price Channel/ Pivots/ Period/ phased Functions etc.):

2 possible Variants with a dividing/ decisive/ dimensioning Level.

The Divisioning of Trace and Trend, or also the Stator/ Rotor/ Gator - Function:
Everything physically fundamented. Arithmetic of a productive Construction.



Trace is what Market calls = Impulsion,

Trend is when Market fills = Operation.

RADIO
PHASE
PHASE
KVDIO

© 2 0 2 3

LOG!C LABORATORY STUDIO.

A senseful Definition by passing the Time makes the Definition universal useful and valid:

- Trace = initial/ opening **Half** of Phase
- Trend = operating/ closing **Half** of Phase
 - more Precision not intended by simplex Potential (arbitrary/ random)!
 - Thus Precisioning to Quarters by Double-Function (see Role 05 above).

Note: both not necessarily exact/ fixed 50%. Market stays variable by sequential Tick-Impulses
(Tick delivers Time to MT-Terminal + potential Ping-Deviation of/ to Brokerage-Server by any Reason)

- Trace opens a Support-Phase for the next Trend (its Time-Price-Range).
- Closing Trend works on Resistances while moving the supported Way
- until Opposition is too big for actual Interests.

The Sequencing of these States is Directive of Market and strongly related to

- absolute (News-Events/ Pivot-Ports/ Real-Time-Events) and
- relative (Price-Levels of any Qualities/ Tick-Impulse-Factors) Times,

which build the Time-Construct as fundamental Organization of its working Cycles.

It is simply comparable with the Situation in the next Store.
Trend is a periodically called Fashion (however short):

it starts, when it is designed to start:
Offer is made existent = open Saison
Phase = Start by supportive Interest;

it runs, as long its Time is running:
Offer is not longer existent = close Saison
Phase = End by resisting Interest.



Length and Strength of the Trendphase is the Quote = Ratio of

- saisonal (*time-decisive*) Arguments and
- Conclusions/ Consequences of own Interest (*Price-Performance*).

To ensure Productivity and Survival, Market inevitably needs to know its spatial Position during its trending Movements:

- Offer = Cost Factor/ Risk.

But a precise Measurement of an actual Position out of a moving Vehicle is not achievable (*physical Law*).

Therefore it frequently has to stop.
These Stops present themselves as

PointZero =

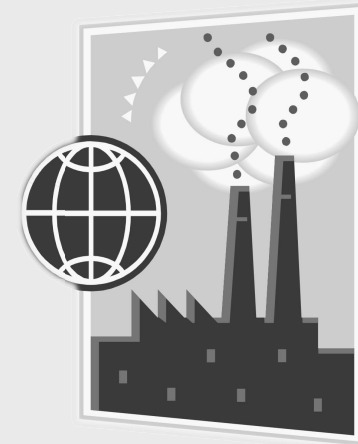
- absolute/ relative
- conditional/ sequential
- immediate/ intermediate

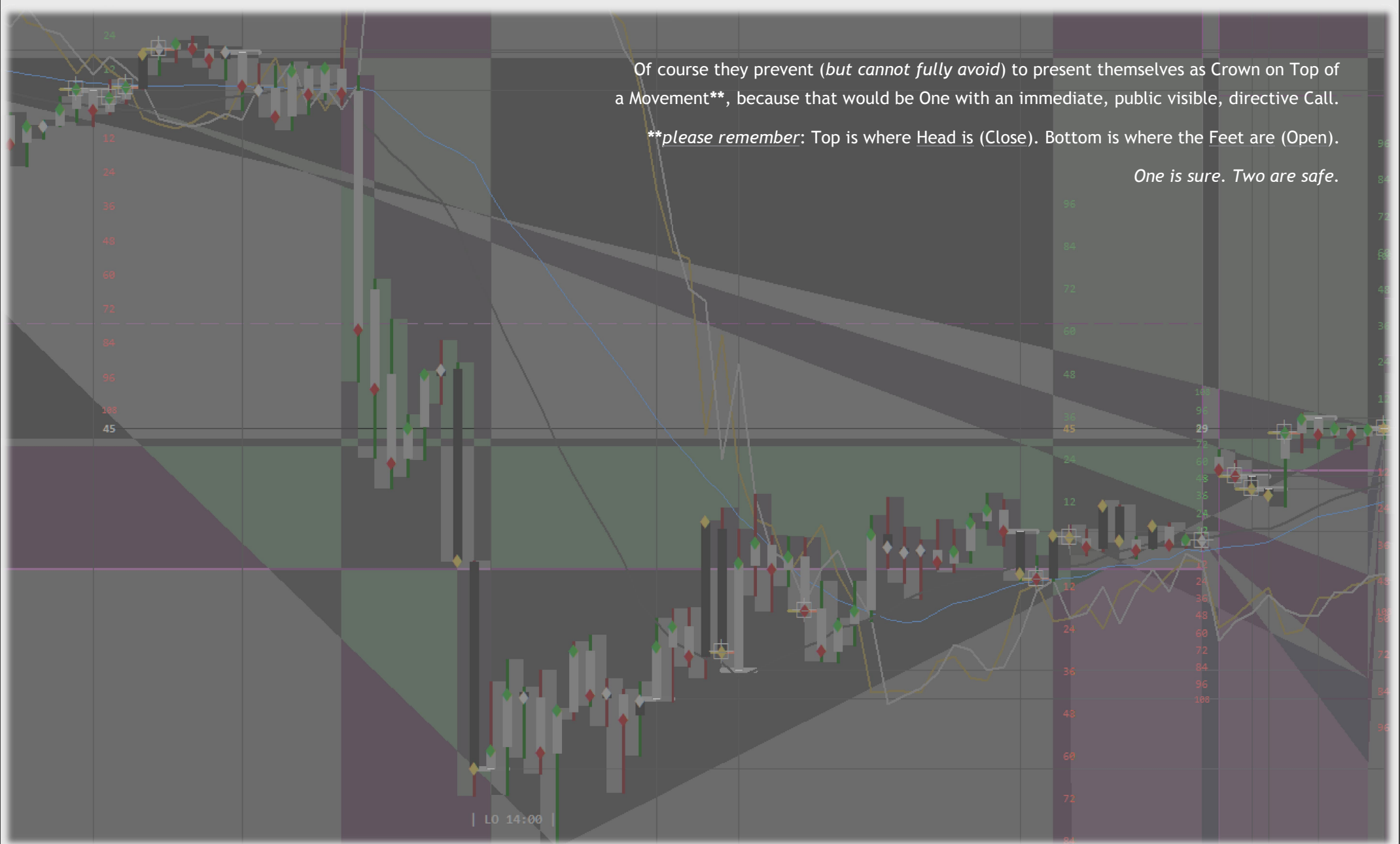
Halt of Movement as

- consequent Level-Reflexion and/or
- conditional Level-Projection

Fortunately the Forex Market desires many of such Stops as alternating System (*trying to hold a Balance by dosed Impulse Deviations*).

Their Amount of Appearance is contraproportional to the adjusted Timeframe Size and their identifiable Impact.





[4.3] Buttons

Market has no Speed Limit

To stay in a well-fortified Position, essential Functions of the Charts are directly off the Screen accessible. The functional Effect of a Button Click depends, like any other external Impulse, on the next Tick Arrival.

No Problem during Trading Times. Otherwise please update your View by right-Click-refresh.

If a Button does not behave as expected, reduce the Magnet Sensitivity of Objects in Terminal-Options to 0.

Note:

The Chart has a functional Frame like a Camera Objective. Some Positions are conditional, some fixed, some optional.

[5.0] Indicator PointZero

Think global - Act local

The **default** View of the Chart consists of following Components and *is read like follows*:

[VALUE] =

- Boolean: Button **Position** on Chart
- Cn: Corner n = **0** to **3** (left upper to right lower)
- Variable: **default** Value

Generic (*mostly central*) gray Zone as Spread between the highest Low and the lowest High of the visible Chart-Periods, which present themselves like follows:

central MA: daily gray, weekly blue (leads)

Move: Trace dark-gray/ Trend bright-gray
works as moving Range and ranging Move.

Range Color by Open: Offset to prior Close/ Open/ Center (*conditional*)*
*Note**: no separate Center-Color, the Open is passed by/of both Directions.

Close Color by Move: Offset to prior Open (= *actual*)

- directional **on**: Null = white/ Full = orange
- navigational **off**: up = green/ down = red
- PointZeros **off**: **noted** by a white Haircross,

Toggle Close Signal via Countdown-Button.

Every Period works by its own Range-Shadow with the variable Chart-Coloring. Identify their Phase by Coloring the Ranges with Button in Corner **3** most right (CW:WD).

[5.1] Fundament

Code = Logic = Notation of Ordination

Body of Chart

3-lettered Abbreviations on Price-Column:

Timeframe: MN = M, W1 = W, D1 = D
+ Position HI/ LOe.g. WLO = Low of W1 - Channel (blue)Bands and Pivots define the periodic Arrangement,
on which the Pen notes its designing Movements.The Colors of Channel and Pivots cooperate
= they are softened or amplified
and process accordingly to the Color Theory
an indicating Background Tone.**Time Price Channel [SUB]**To identify its Construction fully,
colorize its dimmed Trendlines by Countdown-Button [C3]
(or preadjust via Colored Bands in Options).

- hemispheric = 2 x 50% Coloring Ranges, depicted as colored Shells
- gray D1, blue W1 Center = 0
- Shells divided by Center-Trend
- asymmetric Appearance due to separate Calculations
- of High and Low - Bands and central Moving Averages
 - Definition of Moving Average: variable Price Line
 - Price of Time = external Argument
 - Definition of Channel-Band: constant Time Line
 - Time of Price = internal Argument

15 Period Event Notation [SUB]

special Contemplation of conditionally called absolute and/or relative Events:

- Gator: 0-100 = Zero + Full Move (*none present here*)
- blue dashdot Centertrend on Period
- notes new Phases (Caution)
- Range/Move - High/Low (RH/ RL / MH / ML)
- white move-connecting Trendline on Period
- notes Stator/ Rotor - Function by Open Position of Period
- Offset Move-Center against Range-Center
- colored Centertrend: green = North, red = South (directional)
- notes potential/ tendencial Phase Shifts

- periodic Centers in superordinated Range
- white Value on Period if Close = 50% and < 15% or > 85% in D1-Range
- notes near to Edge - Horizons in D1-Channel

- Values beside Periods (connected with Dashes to Close)
- if Close beyond W1 - Bands
- note relative Barriers for overshooting Level-Phases

- Tick Fraction Hits, as green and red Values (*none present here*)
- calculatoric Base is the Relation of Period Expansion and Volume
- note expansional Edges of Time/ Price/ Tick

- bright blue Double Points (Stars)
- equivalent balanced/ central Position of Move in its Range
- note Periods, which have an equal Size of their "Wicks"

Pivot Period Ports [SUB]

Enjoy freestyle Combinatory for 3 main + 1 sub Pivot MN/ W1/ D1 + H4.

03/23 - 18:00 HI

3-lettered Abbreviations on Price-Column:

- Timeframe: MN = M, W1 = W, D1 = D, (H4 = H)
- + Direction (N, S)
- + Level (1, 2, 3)
- or Pivot (PP)

e.g. MN1 = Monthly Pivot (white) Level 1 North

universal Standard:

Pivots are processed Period-Gates and describe a superordinated Sequence of Market.
Equipped with cyclic and leveling Zones (colored Background), which note

- by Time the first, central and last 10% of the Cycle Range
- (Visibility timeframe-dependent, adjust accordingly if necessary)
- by Price the 66-75% of North and South Level-Range
- (Visibility chartscale-dependent, use implemented Autofocus if needed)

Due to the inequal Hours of a Real-Time Week related to respective Weekdays
(last two Hours of Friday are processed on Sunday)

additional and isolated Sunday-Pivot.

L0 03/24 - 14:00

[5.2] Functions

Being develops from Within.

Equal Interest is generic.

Instruments for an extended Chart-Appearance and flexible Functionality:

[PRICE] Auto Focus:

Visual Flexibility, automatic

- *toggle* by Click on the Price-Column (*most right*)
- *calculates* the Chart-Dimensions *related* to the actual Move-Development
 - creates Room on active Hemisphere
 - more Range if Trend/ more Move if Trace

Functional Extension to resolve Display of Period-Event-Notation.

[SCALE] 2 x Period (Range + Move):

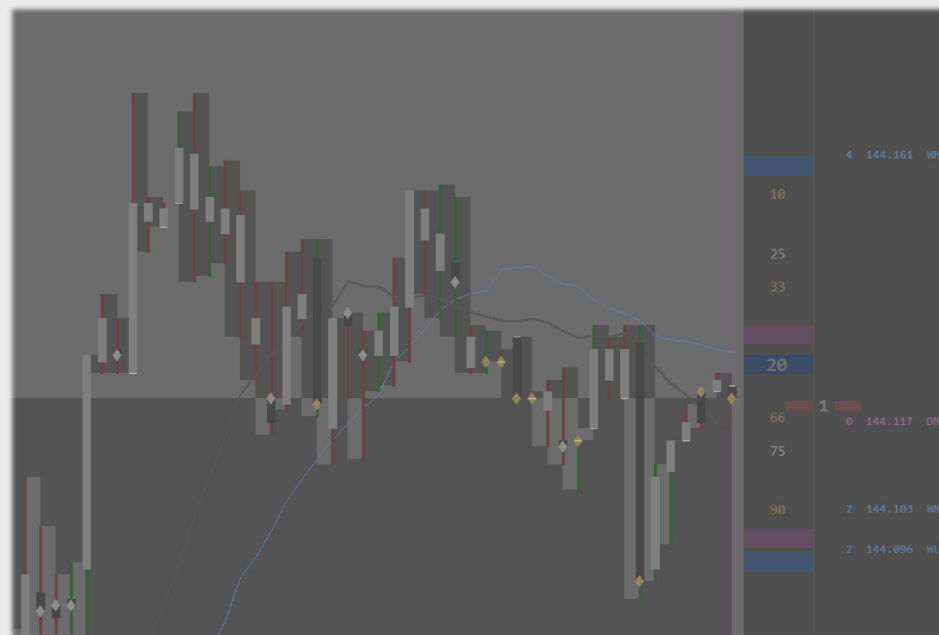
Visual Flexibility, manual

Isolate Range and Move by Click-through:

- *toggle* by Click on the Scale-Column (*2nd right*)
 - first Click = minus Move, shows blank Period-Range
 - second Click = toggles Range and Move, shows blank Period-Moves
 - third Click = all back

Not intended for Live-Use and, to avoid Mis-Clicks not accessible of the Chart, but via Options-Menu:

switch Periods completely off with both Options false => complete free view. All Layers stay functional.



[PROJECTOR - TOP] Protocol Role:*Data Divisioning, Sentence*

The Protocol of periodical Events can be set to Autostart for sufficient wide charts. Chart-Auto-Scroll has to be active. According to the Chart-Concept it is divided in componental Columns of TOHLCV, inclusive full Legend via Tooltip.

The Placeholder-Panel is generally accessible by direct Click on it (*most left Column*).

[REFLECTOR - BOT] Universal Mask:*Data Divisioning, Sequence*

- Open/ Close at High/ Low/ Center (Notes/ Dashes/ Crosshairs)
- Open/ Close - Grid, PointZero Support-Resistance Graduation
- High/ Low/ Bid - Cone of Light (Chart Phase Scope)
- High/ Low - Chart-Time of visible Periods (white, on Chart: timeframe-sensitive)
- High/ Low - Chart-Price of visible Periods (white, on Price-Column: **CHI** = Chart High, **CLO** = Chart Low)
- If Zero = Close at Open/ High/ Low/ Center: white dash, notes Edges and Centers of Phases

Indication of weekly Realtime-Transition Wednesday and Thursday

- Odin = Ministrant/ Mantle/ collects = Close of Phase
- Thor = Kloeckner/ Hammer/ strikes = Open of Phase

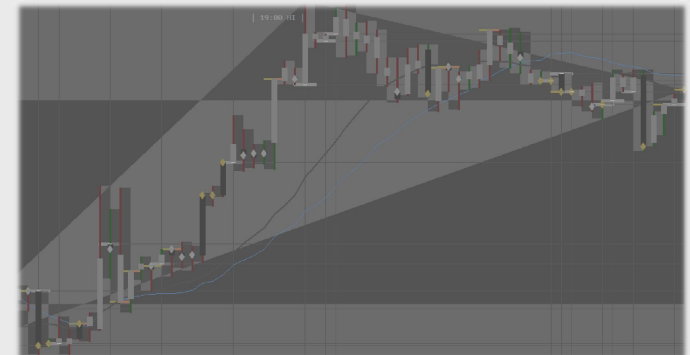
appears on Timeframes > M5 as underlying Histogram-Ray (chart-traversal)

Protocol Role from left to right:

- Period Time/special Occurrences
- positioning Range Open Side
- central periodic Function (*two Roles*)
- navigating Move Close Side
- Period Volume/special Occurrences

switch on/ off (completely) on Chart via Projector - Button

leave with staying Panel as Placeholder by direct Click on the List



Following Layers are Product of a special Contemplation of the inner and outer Relations of Open and Close:

Move-Info:

Display: Position + Direction + Function + Phase

[TOP] Echo Bars:

- mirrored Bars, directional colored according to their respective Period-Direction,
- adds an inverted Visual of Movements and forms a functional Helix.

[BOT] Echo Trend:

- mirrored Open- and Close-Trendlines, white = Open and orange = Close,
- notes separately the leading Component of a Period as *Heartbeat-Trend* (= *nearer One*).

[5.3] Layers

projective Reflection = reflective Projection

The Card Deck:2 Buttons Corner 0 = TL

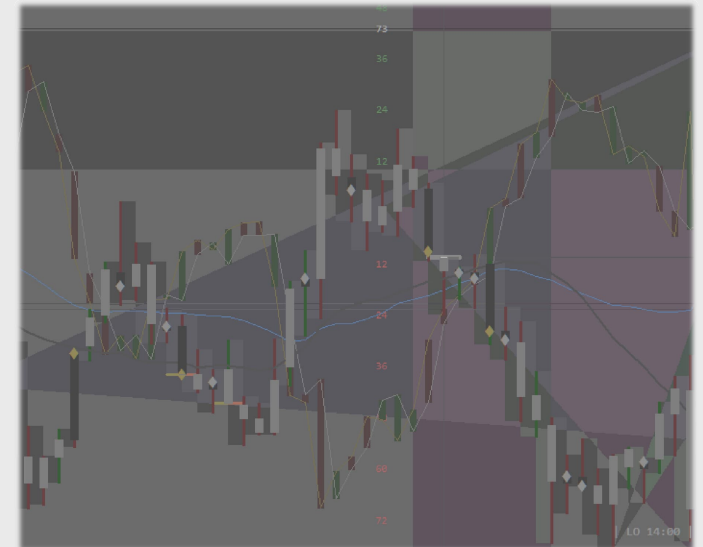
most top-left:
Order-Tool

first Letter = Pivot, second Letter = RealTime

Display: C = Cycle/ L = Level/ Dot if not

Symbol - Button:
Clock

- Market is clocked realtime to the real World by own Interest via cyclic and leveling Events.
- Button Top right Corner 1 (Screenshot-Button) shows VOL (Volume/ Volatility)
- Phases MN = M/ W1 = W/ D1 = D



The Time-Phase correlates with Price- and Volume-Phases and defines the timely Range of the pricely Movement.
Price confirms this framing Call with designed Reflections. Equal/ similar Colors cooperate through all Dimensions/ Modules.

1 Button Corner 1 = TR

- Clock Display
- Screenshot, saved as GIF in \\DataFolder\MQL\Files\

Clock ON:

VOL W L I F T

Clock OFF:

HI 5 | 11:56 | 0 LO

2 Buttons Corner 2 = BLSpread-Button (*first, left*) extends Button Row:

Activate four additional informational Buttons which give access to the separate Chart Projectors.

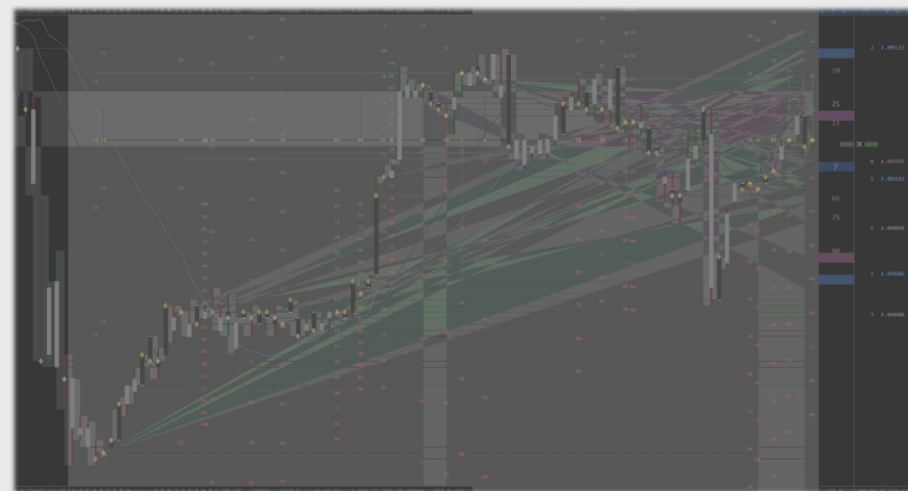
Note:

The following Layers are Product of the Projection of PointZeros to the actual processed Range and Move.

According to the Separation in Cycles and Levels, the direct

- Projections as Light Cones are separately accessible.
- Ranges and Scales are functional combined, and both are
 - by Time: white/ blue and
 - by Price: green/ red colored.

All have their conditional Appearance according to Timeframe/ Security and Presence of Conditions in common.



Thus, Event-Density and -Impact according to relative Distribution and Correlation of present Potentials!

Because of this, they are directly accessible by Chart-Button, or via Options automatically activated.

Enjoy limitless Adjustability for Templates!

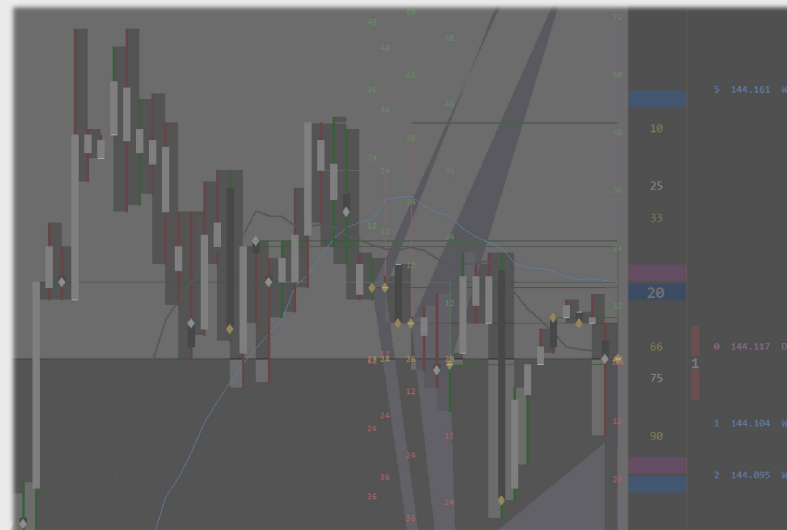
Time-Price-Button:

Display: Server-Time + Bid

19:48:33 · 1.091

Function: PointZero - Level Scaling

- TOP Level Ranges:
 - absolute and relative Plot of High/ Low - Ranges of respective PointZeros,
 - Color navigational/ positional
- BOT Phase Scales:
 - absolute Division of respective PointZero - Range,
 - overlying Variable notes TOHLCV - Position of next directive Call



TPP / PPT - Button:

TPP 15.71429 · PPT 0.064

Display: Productivity

VPP = Volume per Period*:

absolute (= *Frequency*)
Impulse / Period
Sensitivity 15%

TPP = Ticks per Pip:

relative (= *Alteration*)
Impulse / Pip
Sensitivity 33%

PPT = Pips per Tick:

total (= *Oscillation*)
Pip / Impulse
Sensitivity 2 x 25 = 50%

Function: PointZero - Projector (Beams)

- on Top = Cycle
- on Bottom = Level

*Display on Protocol, not on Button.

Both Projectors set their own Range Position in Relation to the actual Range Position, depending on their individual cyclic/ leveling Function.

They work according to their Function and related to the individual Chart-Situation as

- ranging Barriers (Resistance) or
- moving Tractors (Support).

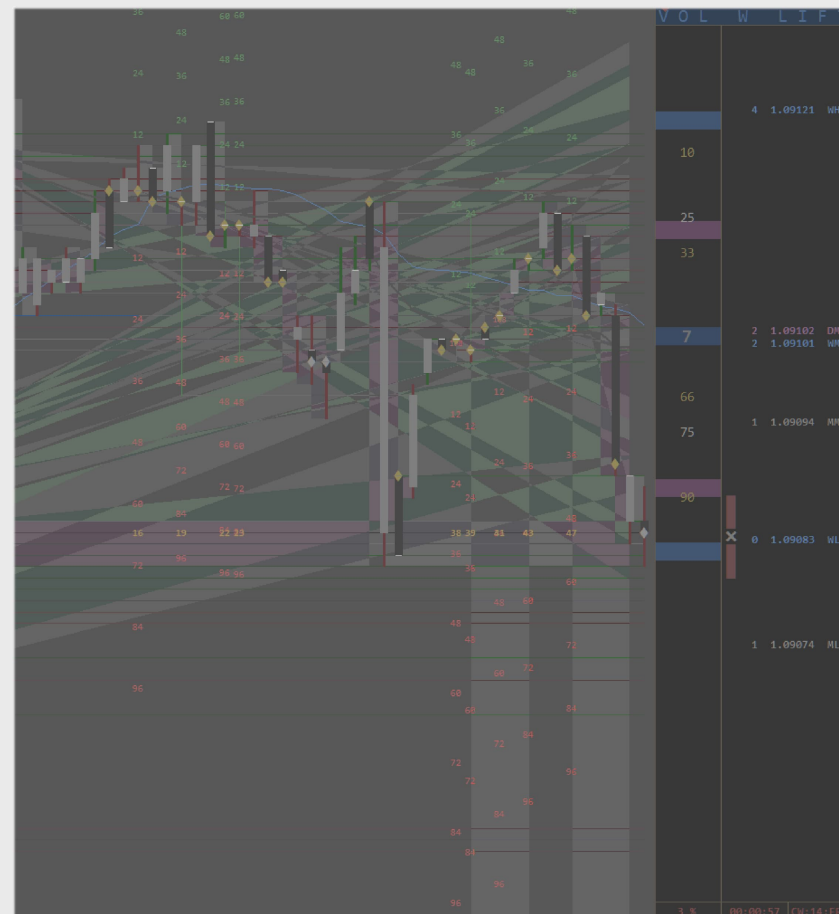
Date-Button (second, right)

- Toggles the Period-Scale and
- navigating Arrows RH/ MH/ ML/ RL, **noting** their Offset to their prior Position.
- Periods: Support white - Resistance orange

3 Buttons Corner 3 = BR

Colorize Channel Bands and Period Ranges to identify their Classification/ Function:

- Step = violet = D1
- Lift = blue = W1
- Null = white = MN
- Full = orange = H4



left: [Period-Percentage] = **colored Periods**

note the classified State of Period-Moves

center: [Countdown] = **Close Signal**

initially not shown, here on/off

right: [CW:WD] = **colored Channel-Bands**

note the classified State of Period-Ranges = Channel-Shells/ Levels

Adjustments of general Nature:

- The Descriptive Mode is useful for Orientation or Confirmation.
- The MT4-Scales are a "fundamental Adjustment".

[5.4] Integer/ Double*constant variable = variable constant*The Icing:

- Protocol Role: 0 = Func (*Function*) / 1 = Bube (*BullBear*)
- Offset Price: position Price by whichever Intent
- Shorten Digits: 6 Digits can be shorten to the preferred Length

Screenshot

- Interval: 0 = off,
- Integer above 0 = Interval in Minutes
- adjust in Height and Width

saved as GIF in \\DataFolder\MQL\Files\

[6.0] Indicator SensorMap*Think global - Act local*Multidimensional, equalized and mirrorable VolumeBand

- as Matrix for Time, Price, Tick and Channel (Ranges/ Moves/ Averages)
- Window-Height = 135%
- Border-Clock-Frame = 115%
- Tick-BarSize = 100%
- colored ZeroPoint Scale = 15%/ 50%/ 85%

Buttons to the Left: Mirror-Function of Channel/ Average/ Pen.

Edging Values are lined up at Chartborder.

Ideally in Completion with the PointZero PriceGraph is the VolumeBand a Composition of:

Time Band = Equalizer

1D Time

periodic Sentence

equalized Product = Timeline

ZeroLink:

Appearance of PointZero as periodic Scale (dotted)

blue: active Time/ Cycle

directional: active Price/ Level

black Bar-Divider = 25%/ 50%/ 75%

Volume Clock = Oscillator

3D Productivity Sensor +
12D BullBear Compass

Productivity = Potential

-2 / -1 / 0 / +1 / +2

= Sensor = Sequence

BullBear = Phase

Rotor/Stator

Trend/Trace

Gator/Zero

= Compass = Sentence

Time Band

Moves (escalative Trace/Trend), by default depicted via ZeroLink-Module:

Colors

Close = orange - yellow

Open = brightgray - white

as Pens (Bars)

as Clips

as Streams

by Close and Open
2x2 overlaying Lineweights

Perspective of Activa
works as Pointer

interactive OC-Work
presents active Phase

actual and last active Directive

as big Dot

Tone

Shell %

% Shell

orange

< 0 - 15

85 - 100>

blue

15 - 30

70 - 85

violet

30 - 45

55 - 70

white

45 - 50

50 - 55

Role 07: five-dimensional translating Volume-Channel

(Potential-Shells of Unit 1 = *Being develops from Within* (2D-Center = 50% = 3D-Center = 0%))

[6.1] Fundament

Code = Logic = Notation of Ordination

Body of Chart

PotentioMeter

ZeroLink Setup [POTI]:

Toggle the Composition of the default Chart-Layout:

in Options: *enjoy* limitless Adjustabilityon Chart: *toggle* separate Componentsby Click on the Poti-Backgroundfirst Click minus Clipssecond Click minus Streamsthird Click minus Pensfourth Click all back**Productivity Cube [POTI]:**Productivity Display -2 / -1 / 0 / +1 / +2VPP = Volume per PeriodTPP = Ticks per PipPPT = Pips per Tick**3 vertical Bars****3 horizontal Bars****9 resulting Positions**absolute (= *Frequency*)relative (= *Alteration*)total (= *Oscillation*)

Impulse / Period

Impulse / Pip

Pip / Impulse

Sensitivity 15%

Sensitivity 33%

Sensitivity 2 x 25 = 50%

VPP [-15%]

VPP [= 0%]

VPP [+15%]

TPP [+33%]

= 0

+ 1

+ 2

PPT [+50%]

TPP [= 0%]

- 1

= 0

+ 1

PPT [+25%]

TPP [-33%]

- 2

- 1

= 0

PPT [= 0%]

PPT [-50%]

PPT [-25%]

PPT [= 0%]

Role 08: three-dimensional ionic Productivity-Cube

(ionic = Sensor of current electronic Potential)

BullBear Compass [POTI]:

Sensor of current sequential Phase (F)

<u>Arms = Prop</u>	<u>Gate</u>	<u>Bull</u>	<u>Bear</u>	<u>Head</u>
<u>Color</u> navigational/ positional	<u>Tap</u> = Zero/ Gator	<u>Gap</u> to North/ <u>Lap</u> to South	<u>Gap</u> to South/ <u>Lap</u> to North	<u>Color</u> phasic
<u>Zero</u> = gray <u>Gator</u> = orange	<u>3 - 9</u> = <u>glides</u> :	<u>12</u> = <u>hurls</u> :	<u>6</u> = <u>runs</u> :	blue: Cycle = W1-Activity violet: Level = D1-Activity
else <u>directional</u>	Prop horizontal = Level Phase	Arms up = Rotor/ Level Trend	Arms down = Rotor/ Level Trace	Arrow = ver: Cycling / hor: Leveling
	<u>12 - 6</u> = <u>sways</u> :	<u>3</u> = <u>masks</u> :	<u>9</u> = <u>masks</u> :	Divisor = ver: Stator / hor: Rotor
	Prop vertical = Cycle Phase	Arms right = Stator/ Cycle Trace <i>looks like C, but is O</i>	Arms left = Stator/ Cycle Trend <i>looks not like C, but is C</i>	
<u>Role 09: multi-dimensional iconic Phase-Compass</u> (iconic = Symbolic of current electronic Potential)				please recognize Frame <u>and</u> Inlet (Cause + Effect)

As before: apparent Phases of Market are sequentially linked with correlated Functions.Note: The small central Number marks the Time-Deviation Server/ Terminal.

- No Deviation = • = Dot if not
- Deviation < 10 sec = sec.
- Deviation > 9 sec = x

This Difference can be caused by either Side,
because it measures current Server-Time against current System-Time.

Consequently it is also an Indicator, how precise the System-Time is adjusted.

Adjust via Options in Case of seasonal Timesettings.

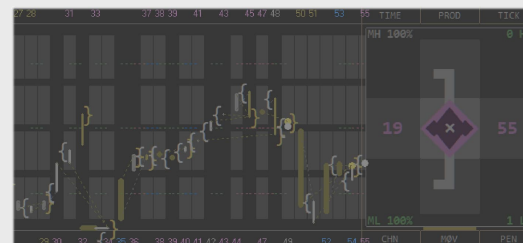
Modern OS come with the Function of Time-Setting by atomic Clock-Data.
Please refresh sporadic the System in Case of questionable Results.

Ensuring that delivers precise **Notation** about Deviations/ Differences/ Offsets.

[6.2] Layers

projective Reflection = reflective Projection

The Card Deck:



Time Periods [TIME]

Toggle the framing Time - Display

Button-Click on the bottom Time-Row
toggles Moving Averages

first Click minus W1
second Click minus MN
third Click all back

Price Positions [PROD]

Toggle the relative Price - Values
(related to W1-Channel)

Inversion of the Price-Component
by Click on Propeller Head.

Tick Bars [TICK]

notes VPP-Deviation < or > 15% to prior Period.

= Phase -
Acceleration [+]
Deceleration [-]

Appearance of a bright Bar notes Center-Work,
which is defined as decisional = intersecting.

Channel Moves [CHN]

The Rectangles operate in the **W1**-Channel

Color:
defined by Channel Position/ Break of Band

violet = Step/ D1-Move/ Trace-Trend
blue = Lift/ W1-Move/ Trend-Trend

white = Null/ MN-Move/ Trace-Trace
orange = Full/ H4-Move/ Trend-Trace

Moving Averages [MOV]

The Averages work each in its respective Channel

that means: the Subwindow-Scalation is valid
related to the Phase of the Component.

They cooperate and affect their near enough passing Neighbor
interdimensional, depicted as Color-Overtaking.

Their relative Movements
reflect the Time of/ and the actual leading Priceline/s.

Period Event Notation [PEN]

The Period-Trend is related to the MN-Channel and

builds a directional HI-LO - Grid according to the
actual RH/ MH/ ML/ RL - Development.

D1-Price in Relation of the Monthly Channel
results as

exponential Translation of internal Period-Positions
(of OHLC).

Pre-Adjustments of inverted Nature:

- Inversion/ MirrorView initially **off**
- *toggle* separately for every Component

Adjustments of general Nature:

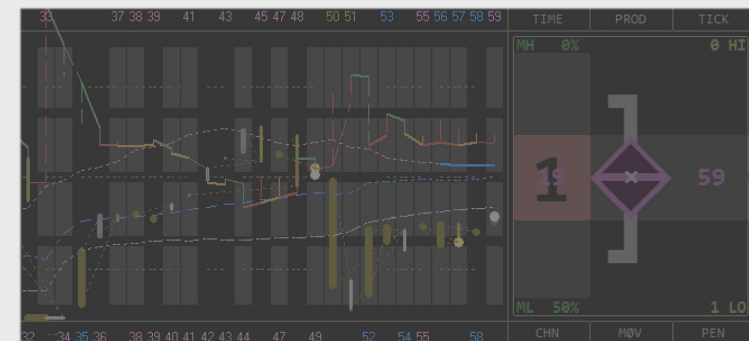
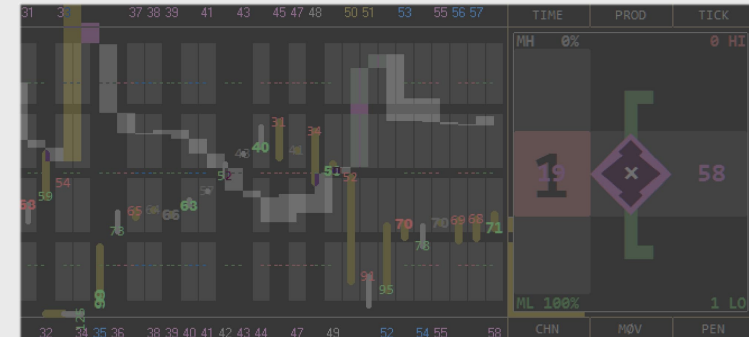
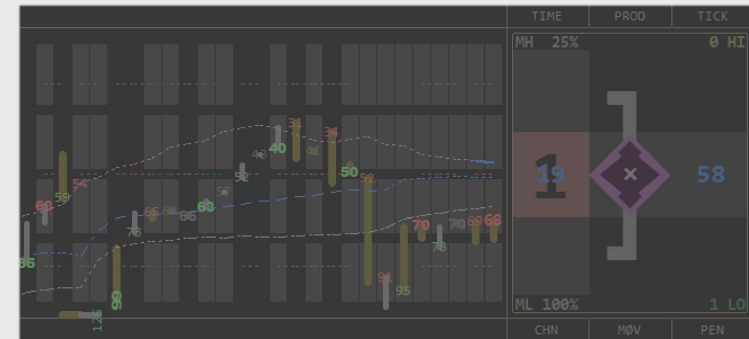
- *toggle* the Visual of the Channel-Moves (filled/ lined Rectangles)
- *toggle* the Display of the Productivity-Potential (colored Position without Value)
- The Descriptive Mode is useful for Orientation or Confirmation.
- The MT4-Scales are a "fundamental Adjustment". *RadioPhase is time-sensitive.*

[6.3] Integer/ Double

constant variable = variable constant

The Icing:

- preadjust Styles/ Widths/ Fontsize (Effect limited)
- Time-Deviation: Server-Terminal (in Hours)
- Initial Timeframe: self-explaining



[<|>] Completion

*Draw your own internal Image by pure Essence:
more external Content not necessarily is effective.*

essential = effective = productive

TOHLCV deliver every necessary Argument.

The needed Effort, to produce one Unit of its Product, evaluates the Productivity of a Production Process.

The measured Outcome of TPP is contraproportional to the raw displayed Value, *that means*:

If the Production needs more Impulses than a defined Standard/ as before,
it is rated as lower productive (*needs more Effort*), and vice versa.

Conclusion *in any Case* is, that the Productivity is adjusted by any Reason (*see Modulation*).

The last Argument is strongly related to a resulting volatile Effectiveness on the Price-Production itself.

The measured Outcome of PPT is collateral proportional.

Proper Use and Interpretation is its Measurement of the current Phase-Potential:

The Volume is the Data-delivering Unit of this whole Construct Market.
Every Terminal stands still, as long the next Impulse does not arrive.

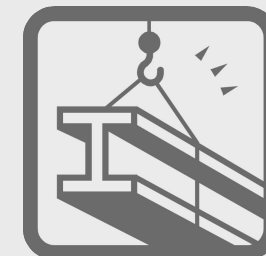
This Impulse delivers the compositional Time-Price-Data-Unit:

- one Time Component, four Price Components and one Impulse Amount Component.

The Amount of Ticks per Time is the server-sidely produced Frequency of Data-Delivery,

- excessable near Infinity, only limitable by Filter/ insufficient Transport-Speed.

PHASE
RADIO
RADIO
PHASE



The Deviations between the single OHLC - Components deliver the individual weighted Leveling
(Deviation of Values defines Range and Move Sizes and Proportions = absolute and relative Volatility).



The Combination of the single Components delivers an individual Profile of every Period
in Amount of needed Impulses and accompanied pricely Component-Deviations.

Because the Time is needed Part of the Delivery, it serves as time-producing Component of this phasing Construction.

That means: MT-Terminal-Time is generated by the Tick-Data-Stamp and as such Component of the internal TPP - Calculation:

If this Data is anyhow adjusted/ filtered/ throttled, then the Values are showing this by their (then) equalized or fractioned Outcome
(due to Existence of Calculation).

That means:

The sequential Appearance of even or periodic Values notes
a time- and/or price-limiting Filtering/ Throttling/ Intervention.



Reason for this Conclusion is the following Argument:
The Tick is the ultimate arbitrary Component in this System

(= external simplex Impulse), because it is not estimable,
with which (absolute and relative) internal componental

Deviations of Time and/or Price it arrives,

or if it arrives at all.

If now a Situation is present, which is by Definition fully arbitrary (= *Impulse of Market*),
but presenting itself sequentially not as fully arbitrary Values (*possible by Condition = Reason*)

then it has to be considered as (sequential) not longer arbitrary,
which defines a sequencing Phase of

any unknown = external directing Intervention;
because natural Market-Arbitrariness now has a (*visually observable*) Adjustment/ Framing/ Directioning:

It is cycled and/or leveled.

[< | >] Perimeter*Indicator = Interest = Question**Imaging = Balance = Answer**Function = automatic Acting = impulsive Reflectiveness*

Colors are mixed to produce a tonal Echo of coincident Forces = Phases. Due to this fact, the fundamental Core Signalling is initially slightly dispensed. A Grayfilter reduces visual Irritations and works as Tipping Point - Layer. All Coloring is functional, artistic Freedom within given, calculative Edges and Horizons.

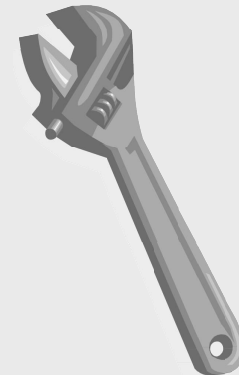
Probably the Monitor has to be brought in an effective Adaption by Hardware Adjustment via Brightness/ Contrast/ Colors/ Color Temperature/ Gamma/ Sharpness/ Black Stabilizer/ *similar*. With an exceptional Adjustment this Indicator delivers exceptional Graphics and Details.

The Chart fits itself in the given Windowsize. Space in Height should be widened as possible.

Ideally place the MT-Menus by Drag-and-Drop to the left Border of the Terminal.

Hide the Titlebar with Adjustment of/ in the CHR-File in your Profile-Folder (*editable by Notepad or similar*):

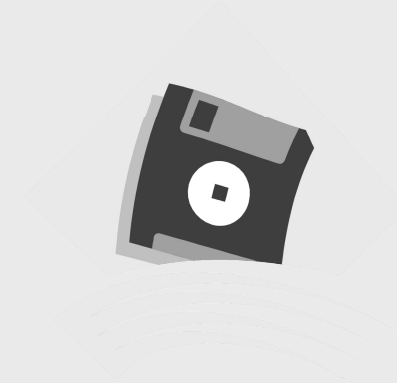
- The MT4-Terminal should be static = maximized.
- The Chart should not be maximized, but roughly aligned/ positioned before Adjustment.
- Variables: window_left/ window_top/ window_right/ window_bottom
 - window_top (*all Charts*)/ window_left (*first Chart*): slightly negative
 - window_bottom/ window_right: slightly positive
 adjusted, drags the Borders/ Titlebar behind the Menu-Cover of MT4/ central Window-Frames.
- Calibrate your Values according to your Screen Resolution.
- If your Setup is ready to go, maximize the Chart by Double Click on the Register-Tab.
- Repeat to switch back. But first read next:



Important:

Adjustments in Data Folder are only saved, if the respective MT-Profile is inactive!

- No Need to close MT-Terminal. Just leave the Profile you want to set up. *But first:*
- Start with two/three Charts in your Profile, to identify them in the Profile-Folder, they are numbered according to their last Order in Terminal in MT4 (*set different TFs!*).
 - In MT4 switch to another/ empty Profile,
 - in System - Profile-Folder do your Adjustment and
 - save/ **close** the CHR-file.
- In MT4 return to your Profile and check your Result.
 - Repeat as long as Result is optimizable (*Pixelwork*).
- When all fits do a Onetime Reload of your Profile to ensure,
 - that the loaded new Adjustment is dumped of MT-Memory to File
 - (*open Profiles work in Memory and are only dumped on Request*).
- Now your Adjustments are constant. Perhaps have a Backup.
- Check Maximize by Double Click on RegisterTab and repeat.



The Period Amount is initially reduced to the visible Area of the Chart.
If you resize the Window, it is recalculated according to the new Condition.

Analysis/ History:

Switch off the automatic Scrolling and scroll back in a moderate Manner,
esp. if having active Layers. An Adjustment is processed with the next Tick/s.

Note: Deactivate Protocol if open.



Patience is a personal = universal Survival-Function.

Function: It is the inner = supportive Strength,

Result: to stand uninfluenceable/ unpredictable Processes.

Technique: Keep calm = own personal Control.

Training:

- Imagination/ Meditation/ Pacification/ Quietening/ Visualization
- = projective Reflection/ reflective Projection

By being

- simplex Protocol = Attentiveness and
- duplex Protocol = Mindfulness,

Patience is the functional Enemy of Fear = Consciousness.

= Halt as consequent Reflection to

- orientate,
- navigate and
- position

= resist irrational Impulsiveness (perplex reflexed Reaction)

= support rational Processes (multiplex reflected Decisions).



Role of Interest.

[< | >] Conclusion

At the End all comes down to one Point.

One of the most deep Intents of the RadioPhase:

*I have to know, **why** I have to do something.*

It is easier to stay patient, if the Reason is clear, why Having to stay patient.

Patience feels like Waste of Time and doesn't feel like moving forward.

But if I know the Reason, then I am attentive to it and mental moving.

Back soon next Week

An additional Estimation/ Information about, how long Having to be patient,
is utmost convenient and makes Life personally easier organizable and plannable.

*Use Channel and Pivots and orientate on upper Timeframes related to Realtime.
This delivers the Big Picture.*

All is possible!

My Operating-System is not your Operating-System.
So I appreciate every Feedback about (*even assumed*) Irregularities.

I am always striving to eliminate Irritations/ optimize Automatisms.
This applies in Particular to my own Creation/s.

Be assured that I am very meticulous and strict with myself.
New Versions always were even by Minimals induced.
And faster offline than anyone were able to discover..

Final = present Stability and Flawlessness are Result of *Consequence by Condition*.

But: Nothing never is final, even if it seems so. If, then World would stand still.

TRIVIAL REASON

FOR FUNDAMENTAL TECHNICAL CONTROL
OF ELECTRONICALLY STIMULATED AND
PERSONAL MOTIVATED IMPULSIVENESS

RADIO
bHVZE

MARKET ADDRESSES REFLEXES
AND OBSCURES REFLECTIONS

BY=OF ITS OWN TRACKS

© 2 0 2 3

LOG!C LABORATORY STUDIO.



(Sort of) Complete indeed is present Status.

I don't know if I can solve every Problem. I always give my Best.
Like with this here. Which calls itself Market = *pictured Life*.

The biggest continuous Problem it has, and this is always valid,
you will be able to agree: The Thing about the Dose (= Potential).

Never change a running System vs. sequentially variable located Needs and Desires.
Beside an own personal Self Defense like any other Activa else practises (*should!*).

The Balance of Economy versus Society
(*and which of them actually is the leading Component of this Contemplation*)

has to be handled highly sensitive and with utmost Care and Caution.
And if advised = conditioned, then with the needed corrective Punch.

*Cause of every common public interpretational Attempts of,
what Mr Pow and Mrs Lag actually did not publicly pronounce:*

Their hidden *Non-Speech* inbetween Lines and Words of Statements.

- The Consequences of Faults are known (*institutionally*).
- Therefore Consequences are initially (*already*) defined.

The Sequence is the present Situation, which has to be handled.
Ideally by already existent Condition (= Consequence as navigating Responsible).

Not expectable = bottomless = not acceptable = not valid.

Defense is automatic. Who else could handle that at all, than an Automat by itself?



RadioPhase is with its unhindered Accessibility of Layers a nearly seamless Lense:

- as X-Ray and Microscope for Scalper and Shorttime-Trader,
- as flexible Norm- and Teleobjective for Day- and Swing-Trader, as well
- as it works as Telescope and Satellite for Investors/ any else Interest.

Inclusive optional Auto-Focus and nearly limitless filtering Adjustabilities.

This complex Construct Market is interdisciplinary. As such this Indicator is.
Most irritating at first Sight. Most essential at next Sight. *And intuitive as well.*

A personal Screen as LifeSaver, variable functional like Market is variable functional.
As standardized Meter measuring the Way, how Market measures: absolute relative.

Fundamented by its technically totally stable and transparent Definition of Logic.
As Standard readable by anyone who can read a Chart. Utmost convenient informative.

Which defines by the Way Subjects, which until now are not sufficient enough defined.

Sesame Street:

- Who is real Support and Resistance, and/or
- when is Trend and
- when the Opposite,
 - which does not exist, and
 - why does it not exist?
- Why Body and why Wick, and/or
- what is the Thing,
- which is not a Gap, and
 - why exists it double doublewise?

EVERY ACTIVA HAS A BIGGER ONE AHEAD.

© 2 0 2 3

LOG!C LABORATORY STUDIO.

RADIO
bHv2E

INSTRUMENT FOR

PRECISE DECISIONS

BY DECISIVE PRECISION.

© 2 0 2 3

LOG!C LABORATORY STUDIO.

RADIO
bHv2E
PHASE
bVdIO

MARKET. WHEN ARE YOU AND WHAT ARE YOU DOING WHY AND WHERE ?

© 2 0 2 3

LOG!C LABORATORY STUDIO.

RADIO
bHv2E
PHASE
bVdIO

= CYCLE + LEVEL + (CAUSE + EFFECT = FUNCTION)

= TRIVIAL, SEQUENTIAL CONDITIONED FUNCTION.

Much Processor Work for such Variety, even also for an institutional Power-Machine.
 Potentials are generated by sequential valid (per Interest) Processor-Route-Maps.
Documented Knowledge. Acquire on own Initiative. Your Self directs you. Start with 4.

Thus nothing never can be faster. Apart from the pure Sovereignty over the Impulse Delivery.

Activa and in particular Recruits are always

- behind by Time and
- in Front by Position.

Positioned. Timed. Coordinated. *By Structure.***

Remaining Question:

- how far behind?

And:

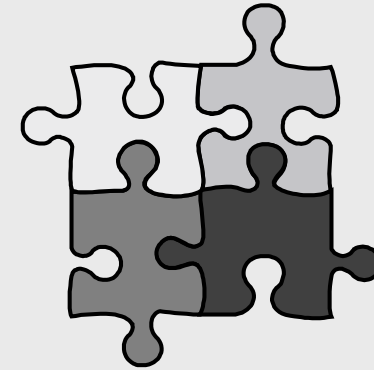
- potentially slowed down or not?

Both Recognitions depend essential on the Quality of own indicational Attempts.

Slower Speed leads to Need = Market opened.

- Come in for free. Any Extra costs.
- Service really Class 2 or rather 1?
- *Class two makes you a Zero.*

Endless Game of perplex Beliefs.



** Extension: By Structure of Network.

Accept that only $a = 1 = \text{one} = \text{Center Dimension}$
and estimate your personal Distance of this Center and of the Edge of actual Range.

Thus watch where your Feet are/ will be positioned on the Chart = manual Clock of Entry.

This defines your actual Bottom which will be confirmed or denied several Times in Case of Entry.

- Doctor God makes the Weather and treats Misery and comes universal white as Cloud and Mind.
- Workman is the weekly River of Life and comes in working blue as Rate of Flow.
- Hunter is the daily Prey and comes as risky but nourishing Flesh in pink and violen/t.
- Monkey is the Travel Funds and comes as encouraging orange Banana for which it has to stretch.

As Perspective of the active duplex Directive you find here final the Reason for
the perplex central Phase-Crossing of this Construct (see Role 00 and here TR):

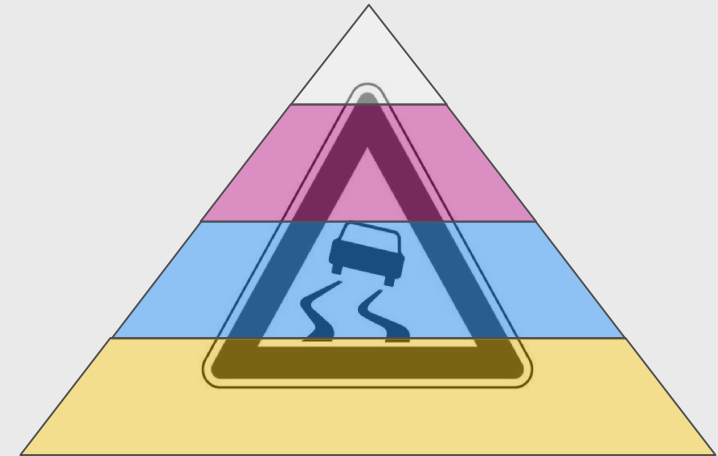
One Timeframe more to lower widens the Potential Range about 1 Extra-Phase.

Result = 2 Double Sectors = 4 covered Days + 1 for own (*incl. Split!*) = one Week.

Ultimate variable by a single central crossing Turn of Role
(*four-dimensional Effect = Reachability of all Four is always ensured*).

Relation of Lord of Life is down to the Hunter (*Professional*),
correlated by risky = high dangerous Wild/ Life.

Relation of Workman is down to the Monkey (*Retailer*),
correlated by randomly tapping in Periods on the ticking Typewriter.



Understand the Position to orientate and operate productive

2 Sizes of
Accounts

\Leftrightarrow

2 Sizes of
Traders

Accounts

crossed creates confused

Traders

RADIO
bHVZE
PHASE
KYDTQ

Account

\Leftrightarrow

leads

\Leftrightarrow

Trader.

= 2 M I R R O R E D M A R K E T S !

© 2 0 2 3

LOG!C LABORATORY STUDIO.

c o n d i / t / i o n p e r i o d

Organization needs Interrupts.

These are the Gates of Inactivity, Trader has to use as Planning Time.
Because these Times exactly are Markets Planning Time. *By the Way.*

One cannot be nearer at Presence. *On the Fly.*

It uses the Law of small Numbers to obscure its orientational Coordinations.

Thus relevant Events are there to find, when the Traffic is narrow,
and Elephant Events then, where Reflection and even Reflex comes too late.

And at special Times exclusively. Always promising. Even if on Head.

Follow its Communication = Function live, by its own trivial Positioning:

- | | | |
|-------------|----------------|---------------------|
| ▪ orientate | + navigate | = Position |
| ▪ internal | + external | = Potential |
| ▪ own Cause | + other Effect | = relative Function |

Please recognize both Positions (own and other), thus:

Consequence + Sequence = Sentence

Logical Fundament of Order of this Setup:

The Consequence is elementary and primarily has to be known, to open the Equation!

(see above: navigating Responsible)

The Consequence is the simplex Impulse.
The Sequence is the duplex Exchange.
The Sentence is the personal Recognition.

This defines the personal Reinsurance, not to operate without being aware about potential Consequences.



First know the Consequence,
then have a Look on the Sequence.

Have a = 1 = the Plan before becoming active.

Survival Interest. Potential productive.

Role of Interest = Way of Market

RADIO
bHv2E
PHASE
KvDIO

© 2 0 2 3

LOG!C LABORATORY STUDIO.

Get your Instruments.

This Development Process was an ultimative personal Challenge.
However. *Done with full Intent and infinite Motivation!*

Because:

Market is like the Weather, one (*just*) has to understand.
Related to the invested Effort this Goal can be achieved.

Really easy from now on.

Then he can plan his Journey and is prepared for potential Turbulences.
They will come, thus they better are known/ planned/ taken into Account.

Like own Capacities and Constitutions.

With this Side everyone gets along with. Be a Navigator/ Pilot/ Racer/ Sailor etc.
Coordinate, maintain and operate personal Instruments/ Vehicles and Projects.

Defines daily adressable Routines.

All what we can do to ensure our Survival, ideally sametime in profitable Way.

Or viceversa. Personal Priority. Short Story. Nice Story.

Now, any Activa come after Market, and if it is not the Trader itself,
then those are (*mostly always..*) in Front of the Trader.

Everyone wants the bigger Piece of the served Cake.

Own available Scope of Potential to work with is Matter of
accounted = hierarchical Position in the current Network.

An Account as Collective counts equal as Account = Balance (x Func/t/ion = Equity).

- | | | | |
|------------------|--------------------|-------------------------|------------------------------|
| ▪ <u>Balance</u> | = simplex Argument | = passive whole Ability | = personal Payroll Result |
| ▪ <u>Equity</u> | = duplex Exposure | = active whole Capacity | = present ext / int Interest |



Nothing is for free, especially not in Relation to a Fundament called Market, which is used by everyone as Floor. Productivity is ensured by Automatism.

Automatism are directed by own Buttons. Machines have adjustable Options.

The higher the Position in a current Business Network,
the potentially bigger the automotive producing Machines.

Law of Productivity

As this is valid for every Business, everyone knows this already.

Because:

The Duplex is external active until Arrival as Coordinate in the Terminal.
Internal it becomes active, if you have an Order at Work. It is a Duplex.

Because it is a Duplex, you have shared Control over your Exposure.
Probably you have an EA and already observed any electronical Behaviour.

Interventional Attentiveness is now your Task, *however* you accomplish that.

Reason, why the Subject personal Risk is of such fundamental Evidence.

If there comes one behind you, you have the last upper Access on the Duplex.
Whether you have productive Use of that Knowledge or not.

And this is what is done: Moneyflow is coordinated. Nothing else.
Ask and answer for yourself, if as Plan in your Direction or in which else.

Don't let yourself be blinded. **Too shiny = too obscure.** *Not necessarily the Opposite!*

Means: reflected = not blending Light lets open Eyes recognize Chances and Traps.



BY THE WAY = ON THE FLY

Market ensures by consequent EXCHANGE RATES

its to survive minimum needed

PRODUCTIVITY = ENERGY.

Which sametime is origin Reason for its own Manifestation.

Every Activa has to pay = **participate** yes (= mixed calculation).

© 2 0 2 3

LOG!C LABORATORY STUDIO.

*Thus weekly the Ministrant defines with the Bell Bag as Collecte.
Before the Kloeckner hits the Bell to declare the new Workweek.*

PICTORIAL PERIOD PHASE PROFILER

The more luminous the Appearance, the more concealed the Function.
Fair is the Definition of Ignorance and Irrationality, thus Non-Reality!

Surface is the appearant Result. Attitude is the functional Result.
 Consequently the Surface is made functional = appearing as Attitude.
Principle of Deception, synonym Cosmetics, equal superficial/ banal

Probably some of them in Front of you are nice, surely also some not.

The first Ones have to be

- differentiated from the last Ones.

The last Ones have to be

- identified (at least) and
- isolated (at best).

Differentiation only by Surface is far to less and random valid Information.

Recognize Opposition CL·early enough by functional Appearance = Indication!

Here you have a profiling Instrument!

Possibility of a professional fundamental technical Judgement.

The Term Weapon for Self-Defense is with no Syllable contradictory.
And as an Indicator it is of pure passive Nature. Optical Corrective. Fine Style. Fits.

Smile. Click. Go. Work up this afternoon.

Additionally it is flexible, direct accessible probative Documentation with its
 semi-automatic Screenshot-Function including all necessary Data on one Print.

Notation. Collection. Conclusion. Consequence.



The Result always speaks for itself, because it is the Definition of the actual Process:

Sentence	- Consequence	= Sequence
Position	- Orientation	= Navigation
Definition	- Protocol	= Development
Potential	- Cause	= Effect

= automatic Conclusion of intended Effect.
= follow on Chart what already recognized.

Means:

*Have a definitive Recognition of your complete present Situation,
then you are prepared to handle it.*

Not to forget our utmost important Friends of all:

- left before right!

Fits! Left is the Past! Right is Presence and Future.

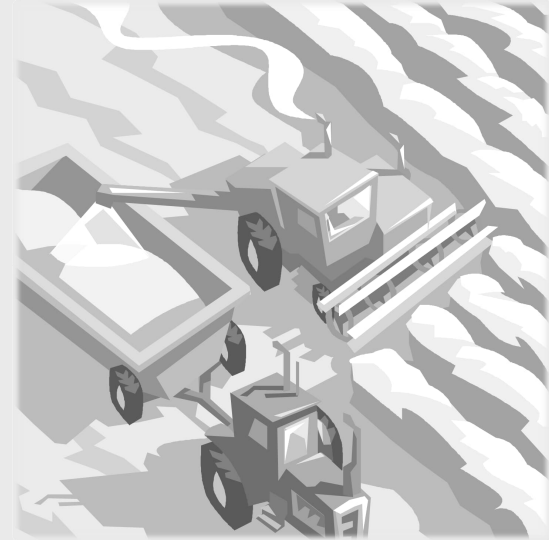
Risk = quoted Interest / rated Potential

In Principle: always valid Mirrorability inclusive active Center Work.

Market at Work.

Man at Work.

Mind at Work.



[= | =] Unifier

Why are you arguing?
 Market is fundamental and technical.
Find Similarities, not Differences.

GLOBAL FUNCTIONAL = LOCAL APPARENT

1 - R = Potential = Path

If Potential is not internal defined,
 it potentially is external designed.
whoever may choose..

Own

- **Func/t/ion** = functional Ion during /t = Echo
 = temporary Charging of Collective.
- **Reward** = related to satisfied Interest of *called* Potential.
- **Recognition** = Impulsecontrol by Patience and mental Presence.
- **Technique** = clock Ordercall at appearing functional Range

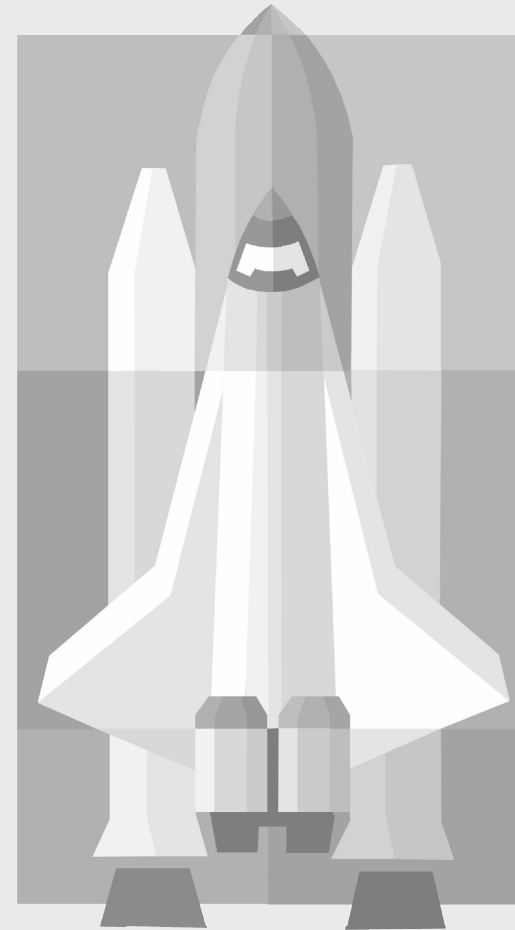
What was elaborated, was, how to define this functional appearing Range.
 And: no Invest = no Interest = no Reward.

Have profitable and senseful Use of it! *Of each or gladly both of them.*

Much Success!
 Best regards!
 Fette Beute!

Small Things are decisive.
 Please report Bugs.

Many Thanks!



IDENTIFIED ISSUE/ PROGRAMMATIC PROBLEM/ QUALIFIED QUESTION/ REASONABLE REQUEST

= CONDITIONAL RESPONSE.



All /the Best!

© 2023

LOG!C LABORATORY STUDIO.

© 2023
LOG!C LABORATORY Studio.

RECOGNIZE AT OWN WHAT IS TO KNOW AND
NO OTHER WILL ANY LONGER AND AT ANY TIME EVER

BE ABLE TO TELL WHAT HAVING TO DO

BECAUSE ALREADY RECOGNIZED AND KNOWN

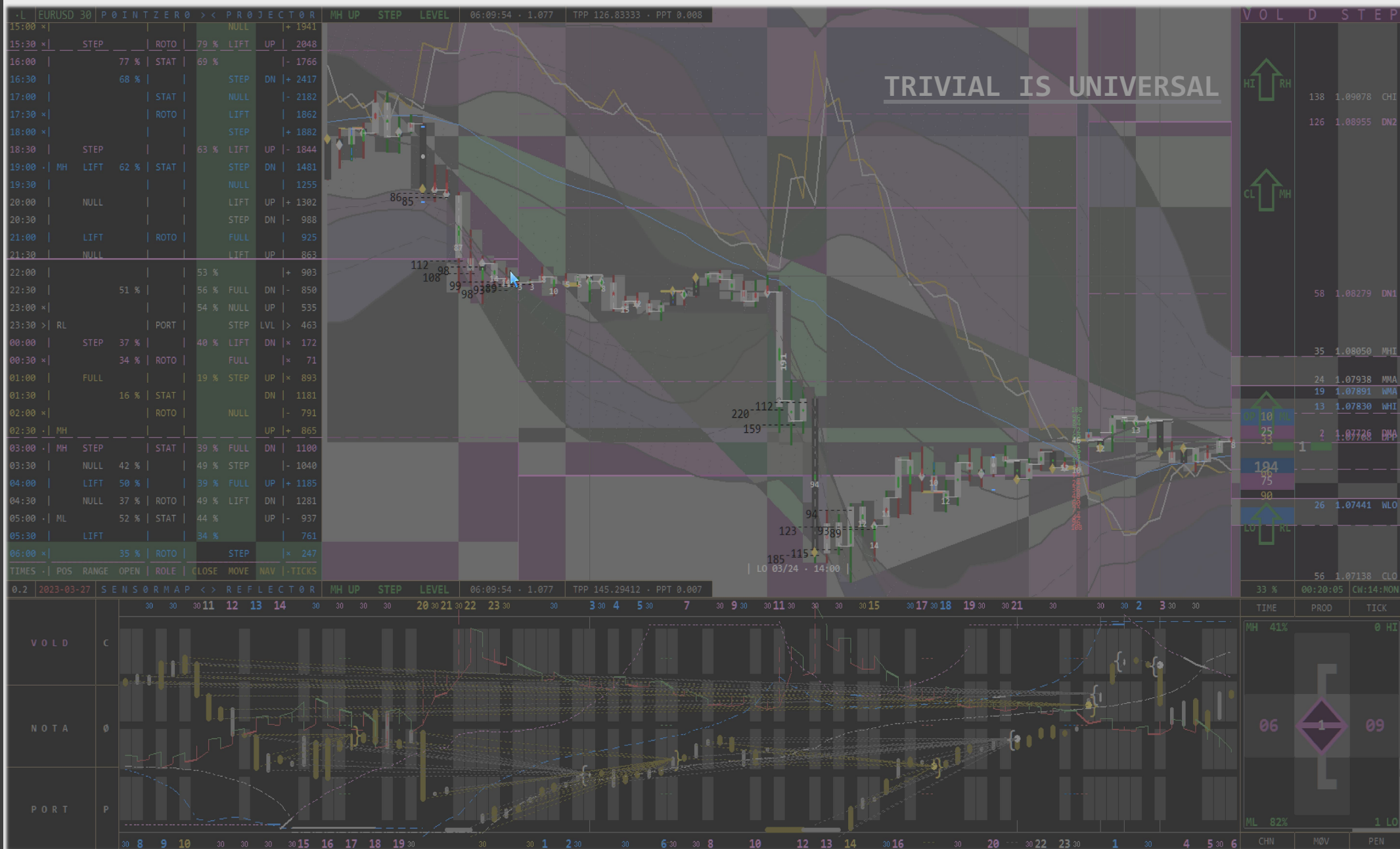
SELF IS
ABSOLUTE RELATIVE
UP MIND

ASK AND IT WILL BE GIVEN

TAKE AND IT WILL BE ANSWERED

RADIO
PHASE
PHASE
RADIO

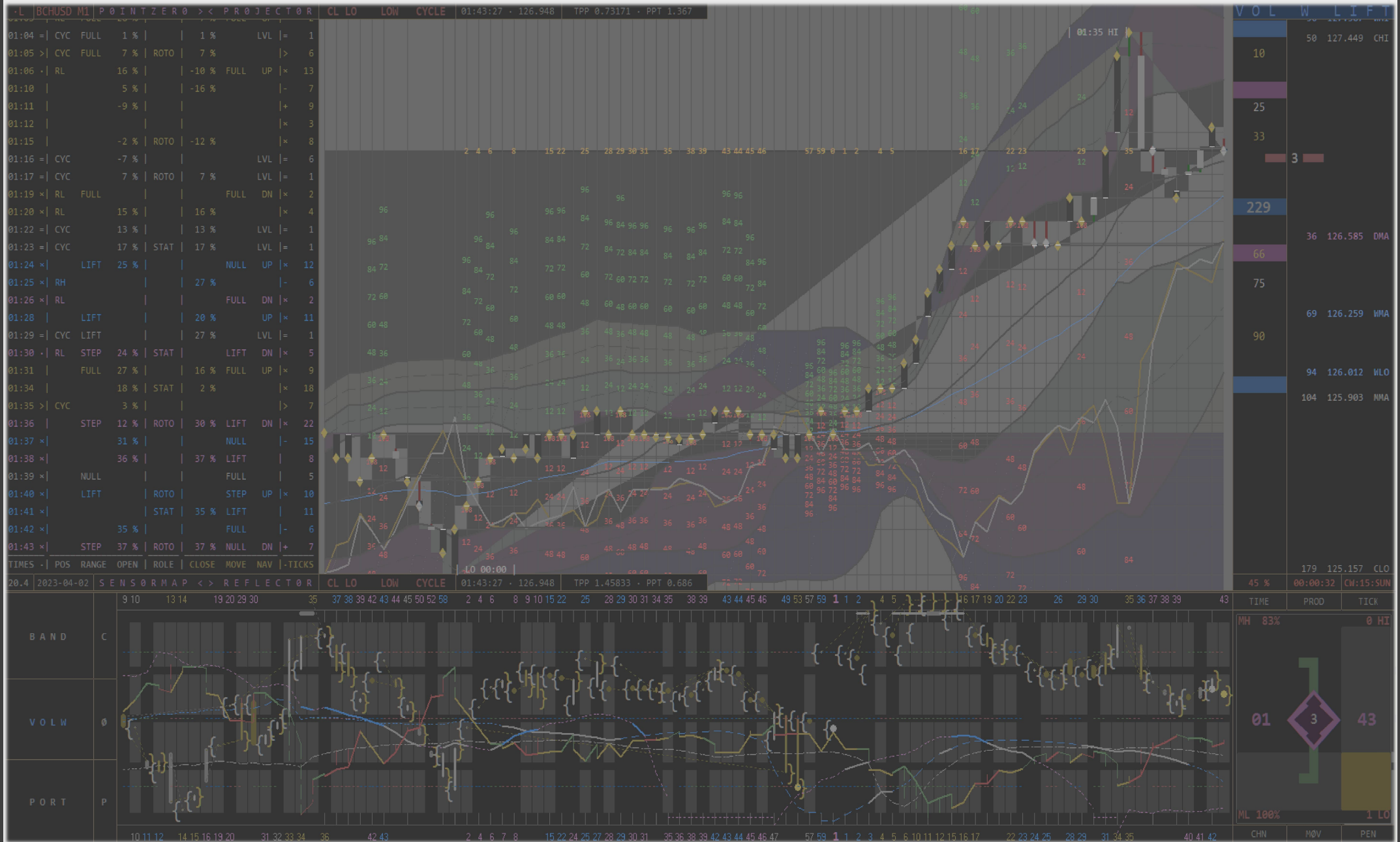
P I C T O R I A L P E R I O D P H A S E P R O F I L E R

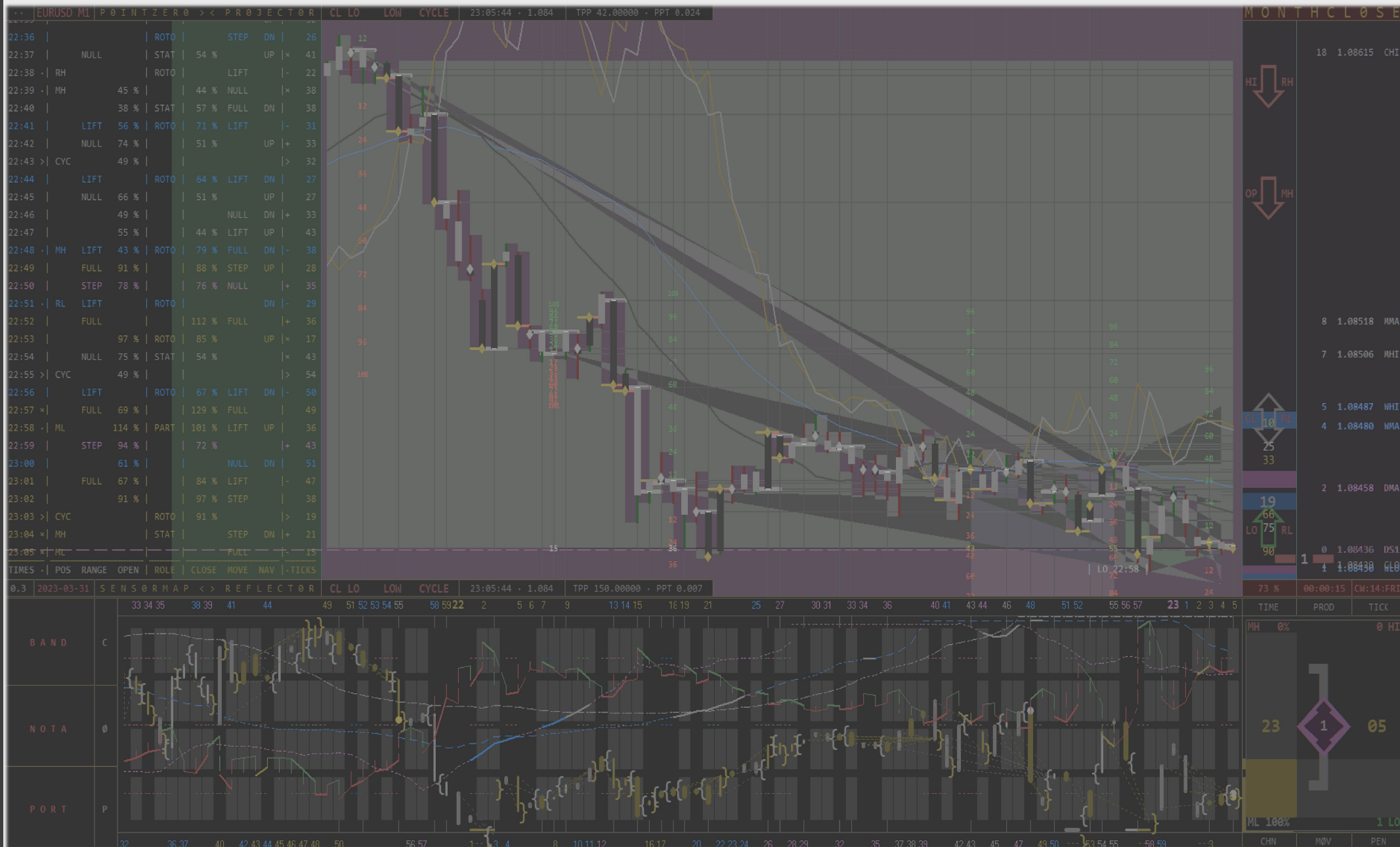


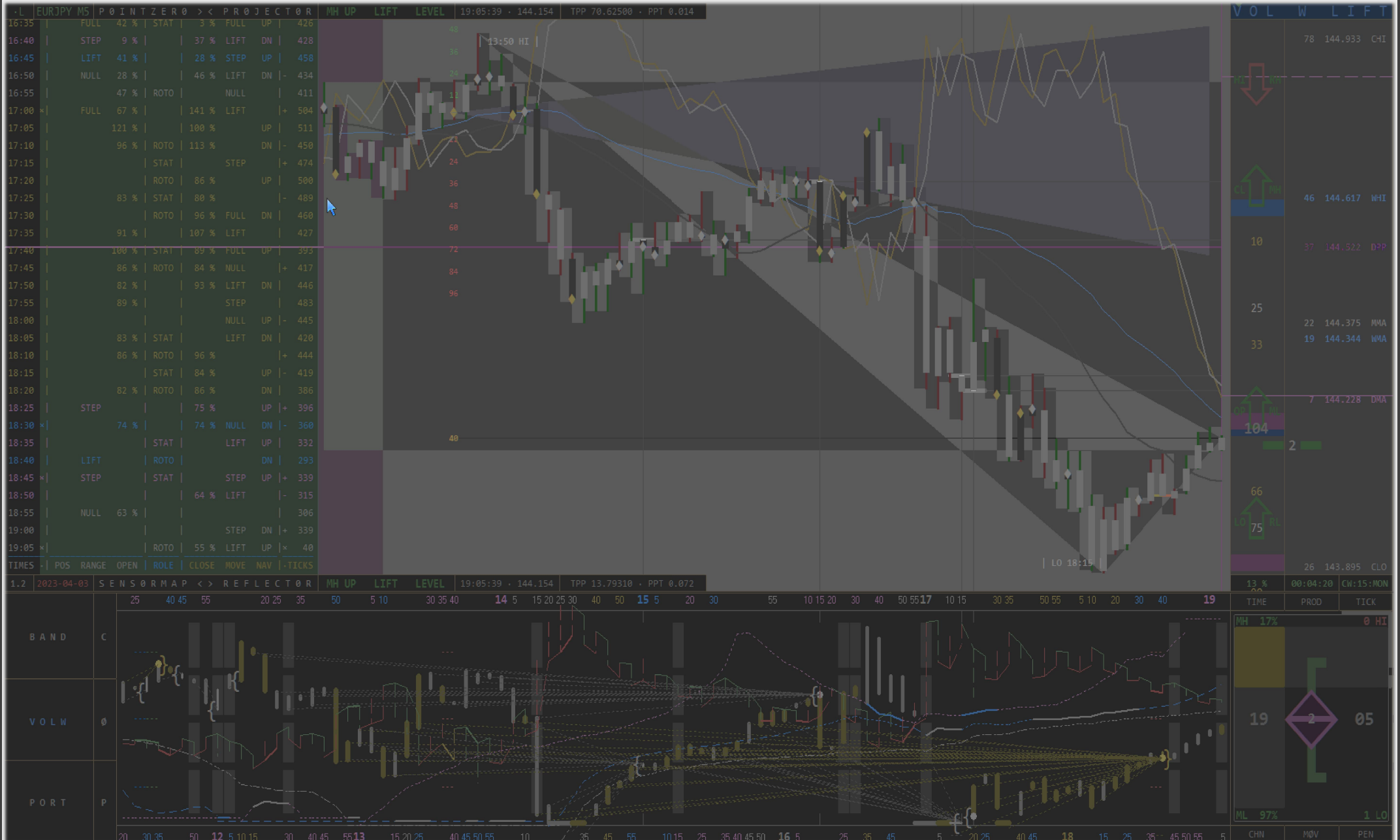
RADIO PHASE

COMPENDIUM

LOG!C LABORATORY STUDIO.







SENSØMAP
[> <]
BOINLSEKØ

PHASE
PICTORIAL PHASE
PERIOD PROFILER
BVDIO

ZENZØKWB
[< >]
PØINTZERØ

PØINTZERØ
[> <]

RADIO
PERIOD PROFILER
PICTORIAL PHASE

BOINLSEKØ
[< >]

Last Paragraph:

Any unauthorized Use/REPRODUCTION/DUPLICATION/DISTRIBUTION/etc

of my WORK and/or my WORD, in particular/ in general,
in any Form, even in Extracts, is strictly prohibited!

Exclusive Exception:

[Manual educ/exam] for dedicated own personal private Use.

This Declaration does not relate to already given Authorization.

STANDALONE! COOPERATION WITH ANY EXTERNAL
PRODUCTS IS NOT INTENDED = NOT GUARANTEED.
NEVER OF INTEREST = NO REASON TO COMPLAIN.
JUST ANSWER YOURSELF IF OF NEEDED ESSENCE.

Respectfully.



Do **two** walk together **unless** they have **agreed** to meet?
[Amos 3:3]

ME IS technical sensitive responsive projective INSTRUMENT

Avoid Beliefs!

TRANSPARENT - DEFINITIVE
FUNCTION = ASPECT

It's faster!

LOG!C laboratory studio.
© 2018-2023 /thiejden.
!ntellectual property.

Vaya con Dios

per-spective pause



own mind is just now

!ndenpenden/t = with best attentive Knowledge and own evolved universal Spirit!