

# Exp – Close If Profit or Loss with Trailing

**Type:** Control of profit or loss with profit trailing. Closing on the total profit

**Terminal:** MT4 and MT5

## Links:

- [Full Guide CLP and manual](#)
- [Full Guide VIRTUALTRADEPAD and manual](#)
- Download [Demo VIRTUALTRADEPAD](#) version
- Buy license for [FULL VIRTUALTRADEPAD MT4](#) or for [FULL VIRTUALTRADEPAD MT5](#)
- [Comments, Discussion](#)

## Extra Links:

- [Recommended brokers](#)
- [How to install advisor](#)
- [How to test and optimize advisor](#)
- [Solving problems with the advisor. Log Files for MetaTrader 4](#)
- [Solving problems with the advisor. Log Files for MetaTrader 5](#)
- [How to buy and update on our website](#)
- [How to buy and update on the website mql5.com](#)

## Contents

Exp – Close If Profit or Loss with Trailing.....	1
Description.....	3
THIS EA - is tab from VIRTUALTRADEPAD.....	4
Trailing Profit	
The function of profit trailing at set values.....	5
Examples of use are presented in pictures and videos.....	8
Example of trailing profit in a percent:.....	8
Example of trailing the total profit in the deposit currency and separately in the BUY SELL directions:.....	8
Virtual Stop Loss/Take Profit Mode on CLP.....	9
Additional functions:.....	10
Example of consistent work of the adviser.....	12
.....	12
External Variables and Settings.....	14
Question answer on our advisor.....	21

## Description

## Closing of positions in MetaTrader 4/5 for total profit/loss with profit trailing



[www.expforex.com](http://www.expforex.com)

A convenient panel for working with an advisor.

1. You can enable the Separate Order,
2. Close and calculate separately for BUY SELL items (Separate BUY SELL),
3. Close and calculate all symbols or the current symbol (All Symbols),
4. Enable Trailing Profit (Trailing Profit)

Closing takes place according to the deposit currency, points,%, and drawdown.

- You can set the total loss (in dollars, points, percentages) and the advisor will close the loss.
- You can set a common profit (in dollars, points, percentages) and the adviser will close the profit.

The advisor is intended for use on any account paired with any adviser or in manual trading. Once the total balance of deals (positions) for a pair or all pairs becomes greater or equal to the value specified in the settings, all deals (positions) are closed, and orders are deleted.

This version is able not only to close profits at a set level **but also to implement a trailing to get more profit.**

[www.EXPFOREX.com](http://www.EXPFOREX.com)

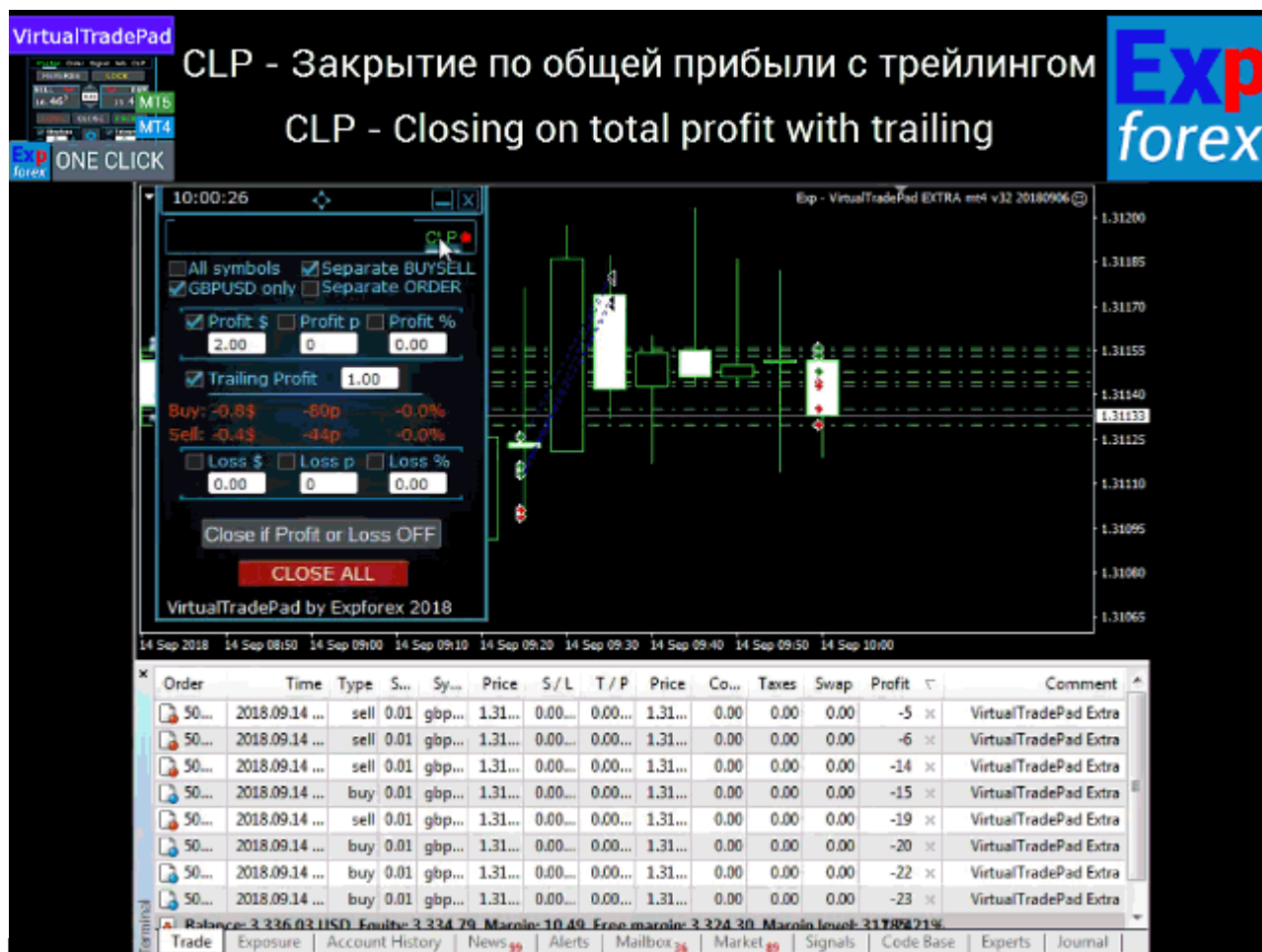
## THIS EA - is tab from VIRTUALTRADEPAD

The control panel closes by the general profit or loss in dollars, pips, and % of the balance.

The panel can be used as a virtual stop loss or take profit (Separate Order).

There is also an emergency button - Close ALL.

Added the ability to profit trailing.



### Main characteristics:

1. The panel works on the symbol that is set (Current Symbol) or considers the total profit or loss for all symbols (All symbols).
2. The panel can be used as a virtual stop loss or take profit. To do this, set profit and loss and tick off Separate Orders. The EA will close positions separately from each other, according to the set profit and loss values in points, dollars, percentages
3. In the panel, you can choose the type of closing: for profit in dollars, in pips or % of balance, as well as for loss in dollars, in pips or % of the balance.
4. Also, there is a button "CLOSE ALL", which closes the position of the symbol or all positions (depending

on the choice) instantly.

5. Directly on the panel displays information about the current state of your positions for the selected methods of closing.
6. Profit can be set only above 0. If you set 0 - the field will flash red. This means that the set value with an error, and this field will not work with the Expert Advisor. If YOU set a value with a minus, the EA will automatically move the field to a positive value (for example  $-100 = 100$ )
7. The loss can only be set to below 0. If you set 0, the field will flash red. This means that the set value with an error, and this field will not work with the Expert Advisor. If YOU set a value with a plus, the EA will automatically move the field to the minus value (for example  $100 = -100$ )

#### Terms of use:

1. Place the panel on your currency pair.
2. Depending on how you want to close positions (for all characters or the current one), select the corresponding option on the panel itself.
3. For the checkbox to select the type of closure to be active, you need to enter parameter values other than 0, with a positive value for profit, and negative for a loss, for example, -100.
4. Check the boxes of units you want to use when closing (Profit \ Loss in points \ dollars \ percents).
5. Enable the Close if Profit or Loss button, it should turn blue. This means that the EA is involved in the work.
6. As soon as the profit or loss of your positions crosses the mark of the established levels, the deals will be closed.
7. The emergency button CLOSE ALL is designed to close all positions instantly.

#### Control:

1. **All Symbols** - Use closing on all symbols.
2. **XXXXXX only** - Use closing only on the current currency pair on which the advisor is installed.
3. **Separate BuySell** - Use a separate closing for positions BUY and SELL.
4. **Separate Order** - Use a separate closing for each deal/position separately.
5. **Profit \$** - Enables/disables closing on the total profit in dollars or the deposit currency.
6. **Profit p** - Enables/disables the closing of the total profit in points.
7. **Profit%** - Enables/disables closing on the total profit as a percentage of the current balance.
8. **Loss \$** - Turns on / off the closing for the total loss in dollars or the deposit currency.
9. **Loss p** - Enables/disables the closing of the total loss in points.
10. **Loss%** - Enables/disables the closing of the total loss in percent of the current balance.
11. **Close if Profit or Loss ON** - The closing function for total profit or loss is ON
12. **Close if Profit or Loss OFF** - The closing function for total profit or loss is OFF

#### Trailing Profit

##### The function of profit trailing at set values.

This function includes trailing profits (floating profit) at closing.

Those, in this case, the profit is closed, not fixed, but with the trailing of the specified value. Those. As soon as the profit has reached the specified value, the EA remembers the current value of profit and then tightens this value after the profit.

#### For example :

If you set the close at profit 10 dollars:



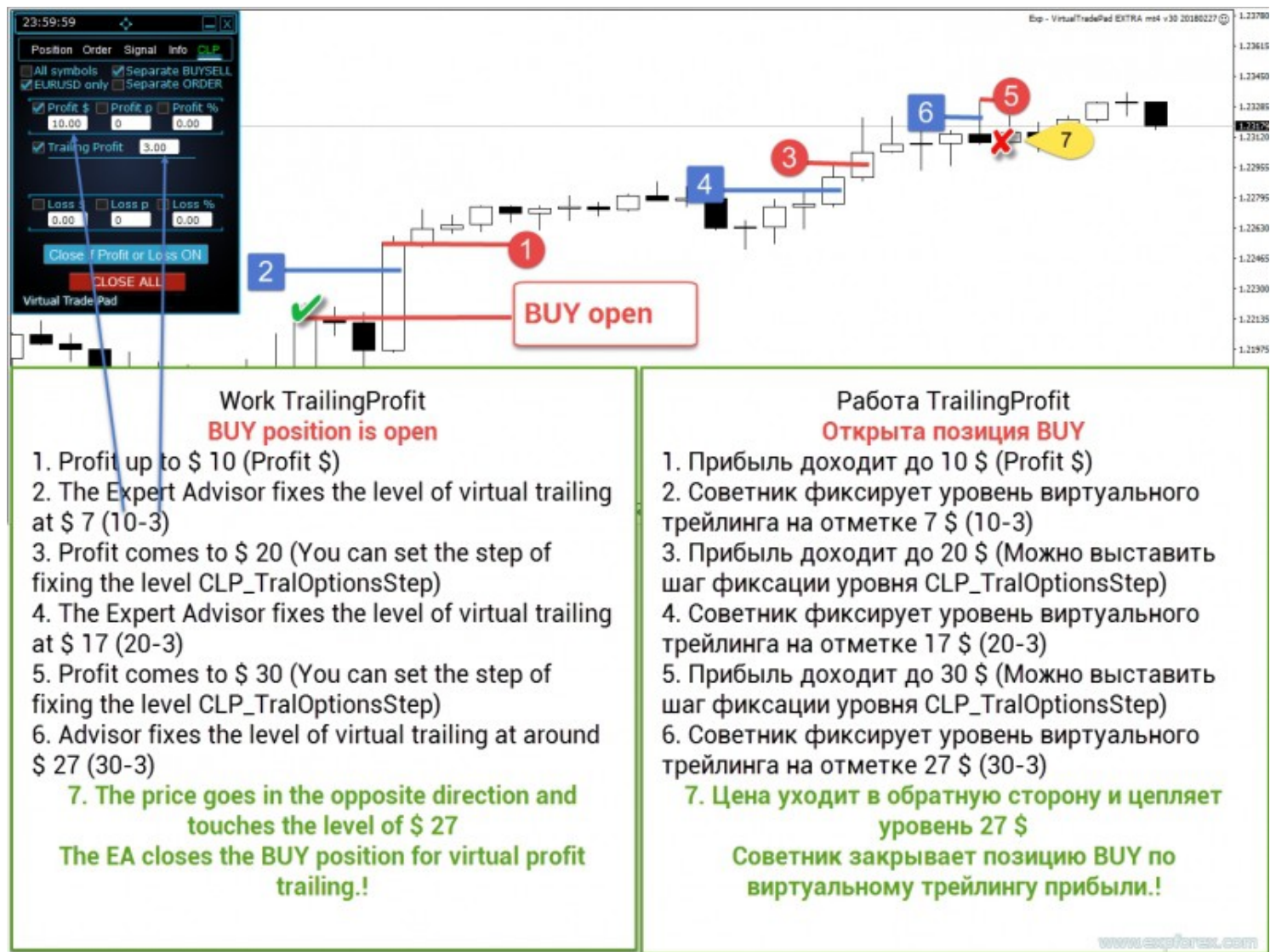
**Profit \$ (checkbox)** - close in plus.

**Profit \$(field)** - how much to close in plus.

**TrailingProfit** - distance from Profit \$, at which achievement the trailing of profit is included.

1. When you set Profit \$ to 10, and for TrailingProfit to 5, the trailing profit line is set to \$ 5.
2. The advisor, when passing the \$ 10 mark, will include the profit trailing function and will pull the closing mark after the profit. In the log, the records of the current position of profit will be displayed.
3. After the total profit falls below the last fixed level - TrailingProfit, the advisor will close all deals forcibly.

The option works for all types of closing: All symbols, Current symbol, Separate direction BUY and SELL. Each order is separate.



The option works for all types of closing: All symbols, Current symbol, Separate direction BUY and SELL. Each order is separate.

When the value is set to Profit = 10, and for Trailing Profit = 5, the profit trailing line is set at \$ 5. The adviser, when passing the \$ 10 mark, will include the profit trailing function and will pull the closing mark after the profit. In the log, the records of the current position of profit will be displayed.

```
10:20:20 Exp - CloseifProfitorLoss wTral EURUSD, H1: Traling is ON tralprofit =
12.00000000
10:20:20 Exp - CloseifProfitorLoss wTral EURUSD, H1: Level Profit up tralprofit =
12.00000000
10:20:20 Exp - CloseifProfitorLoss wTral EURUSD, H1: Level Profit up tralprofit =
13.00000000
10:20:20 Exp - CloseifProfitorLoss wTral EURUSD, H1: Level Profit up tralprofit =
13.50000000
10:20:21 Exp - CloseifProfitorLoss wTral EURUSD, H1: Level Profit up tralprofit =
13.50000000
10:20:23 Exp - CloseifProfitorLoss wTral EURUSD, H1: Level Profit up tralprofit =
13.50000000
10:20:23 Exp - CloseifProfitorLoss wTral EURUSD, H1: Level Profit up tralprofit =
14.00000000
10:20:24 Exp - CloseifProfitorLoss wTral EURUSD, H1: Level Profit up tralprofit =
14.50000000
10:20:24 Exp - CloseifProfitorLoss wTral EURUSD, H1: Level Profit up tralprofit =
14.50000000
10:20:29 Exp - CloseifProfitorLoss wTral EURUSD, H1: Level Profit up tralprofit =
15.00000000
10:20:31 Exp - CloseifProfitorLoss wTral EURUSD, H1: Level Profit up tralprofit =
16.00000000
10:20:32 Exp - CloseifProfitorLoss wTral EURUSD, H1: Level Profit up tralprofit =
17.50000000
10:20:36 Exp - CloseifProfitorLoss wTral EURUSD, H1: Level Profit up tralprofit =
18.50000000
10:20:37 Exp - CloseifProfitorLoss wTral EURUSD, H1: Level Profit up tralprofit =
21.50000000
10:20:37 Exp - CloseifProfitorLoss wTral EURUSD, H1: Level Profit up tralprofit =
24.00000000
10:20:37 Exp - CloseifProfitorLoss wTral EURUSD, H1: Level Profit up tralprofit =
24.00000000
10:20:39 Exp - CloseifProfitorLoss wTral EURUSD, H1: Level Profit up tralprofit =
26.50000000
10:20:39 Exp - CloseifProfitorLoss wTral EURUSD, H1: Level Profit up tralprofit =
28.00000000
```

After the total profit falls below the last fixed level - TralOptions, the adviser will close all transactions forcibly:

```
10:20:42 Exp - CloseifProfitorLoss wTral EURUSD, H1: Close position _close =
23.00000000 tralprofit = 23.00000000
10:20:43 Exp - CloseifProfitorLoss wTral EURUSD, H1: close # 212724663 buy 0.10 EURUSD
at 1.34049 at the price of 1.34095
10:20:44 Exp - CloseifProfitorLoss wTral EURUSD, H1: close # 212724661 buy 0.10 EURUSD
at 1.34049 at the price of 1.34094
10:20:45 Exp - CloseifProfitorLoss wTral EURUSD, H1: close # 212724660 buy 0.10 EURUSD
at 1.34049 at the price of 1.34095
10:20:45 Exp - CloseifProfitorLoss wTral EURUSD, H1: close # 212724658 buy 0.10 EURUSD
at 1.34049 at the price of 1.34095
10:20:46 Exp - CloseifProfitorLoss wTral EURUSD, H1: close # 212724657 buy 0.10 EURUSD
at 1.34049 at the price of 1.34094
```

Examples of use are presented in pictures and videos.

Time	Type	Symbol	Price	SL	TP	Time	Type	Symbol	Price	SL	TP
2017.01.10 10:11	buy	EUR	1.0400	0.0000	0.0000	2017.01.10 10:11	sell	EUR	1.0400	0.0000	0.0000
2017.01.10 10:11	buy	EUR	1.0400	0.0000	0.0000	2017.01.10 10:11	sell	EUR	1.0400	0.0000	0.0000
2017.01.10 10:11	buy	EUR	1.0400	0.0000	0.0000	2017.01.10 10:11	sell	EUR	1.0400	0.0000	0.0000

### Example of trailing profit in a percent:

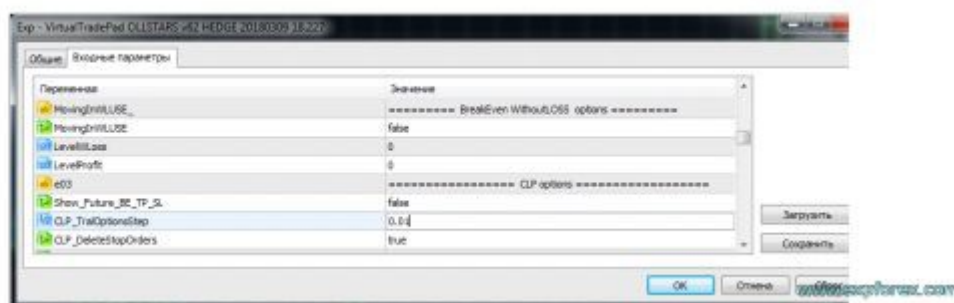
**CLP\_TralOptionsStep** is the step of changing the trailing. If you close in percentage, then this parameter is indicated in percent. for example = 0.01, then 0.01%

**Profit%** is the profit level at which a profit is closed or trailing. For example, 2%.

**TrailingProfit** is the distance from the profit to the fixing of the trailing. Indicated in the values in which you will close.

For example, in percent, = 1. This means that when the profit reaches 2%, the profit level will be fixed at the position 1% ( $2 - 1 = 1$ ).

If the profit is 2.01%, then the level of the trailing will be fixed at 1.01% and so on. If the profit falls below 1.01%, then all positions will close.



### Example of trailing the total profit in the deposit currency and separately in the BUY SELL

#### directions:

**CLP\_TralOptionsStep** - a step change in trailing. If you close in dollars (or another), then this parameter is indicated in dollars (or another). for example = 1, then 1 \$ (or another).

**Profit \$** is the profit level at which a profit is closed or trailing — for example, 5 \$ (or another).

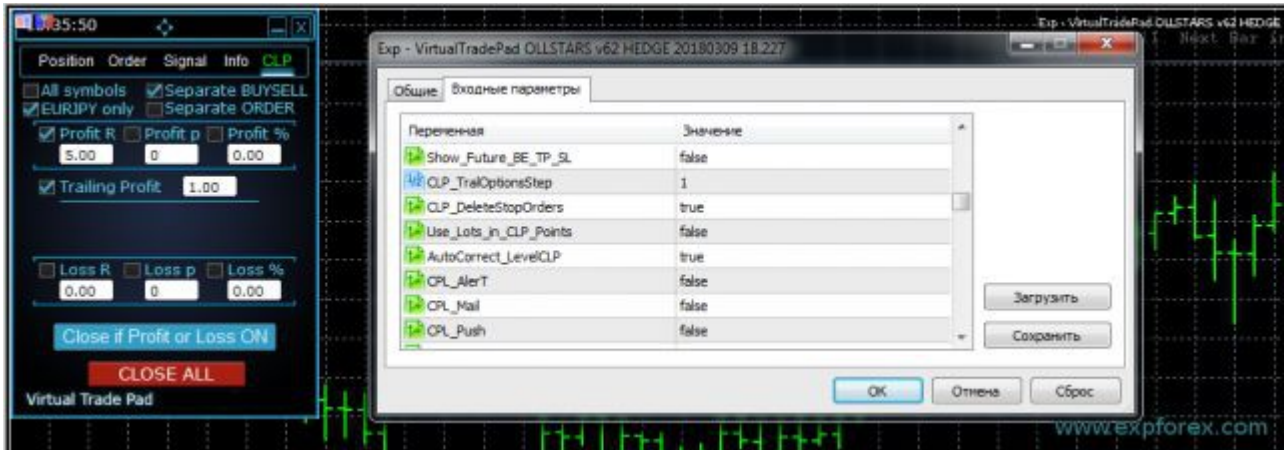
**TrailingProfit** is the distance from the profit to the fixing of the trailing. Indicated in the values in which you will close.

For example, in dollars (or another), = 1. This means that when the BUY or SELL profit is achieved in \$ 5 (or another), the profit level will be fixed in the 4 \$ (or another) position ( $5 - 1 = 4$ ).

If the BUY profit is \$ 6 (or another), then the level of the trailing will be fixed at \$ 5 (or another) and so on. If the profit falls below \$ 5 (or another), then all positions will close.

If SELL is at a loss, this will not affect the closing of BUY because we have included the option: Separate monitoring of directions.





## Virtual Stop Loss/Take Profit Mode on CLP

You can enable Virtual Stop Loss and Take Profit as well as Virtual Trailing Profit on the CLP tab.

In this case all positions will be monitored and closed separately from each other!

You can move these levels only by changing the values on the **CLP** control panel !

You can set **virtual stoploss/takeprofit** in points, deposit currency, percent!

To enable Virtual Take Profit/ Stop Loss mode:

1. Go to **CLP** tab
2. Select the **Separate Deals** check box
3. Set the Virtual TakeProfit
4. Set the Virtual stoploss
5. Enable and activate CLP ON

## РЕЖИМ Виртуальный стоплосс и виртуальный тейкпрофит! MODE Virtual Stop Loss and Virtual Take Profit!



### Additional functions:

Also, the advisor shows approximate closing prices for total profit or loss:

parameter **Show\_Future\_BE\_TP\_SL** - show lines of future closing positions for total profit or loss.

Caution: Only works on the current symbol and when the SEPARATE Orders mode is off.

Lines are shown separately for Buy and Sell positions, or a common line.

If the line is not shown, then the positions form a lock, which can not be closed by the total profit or loss.

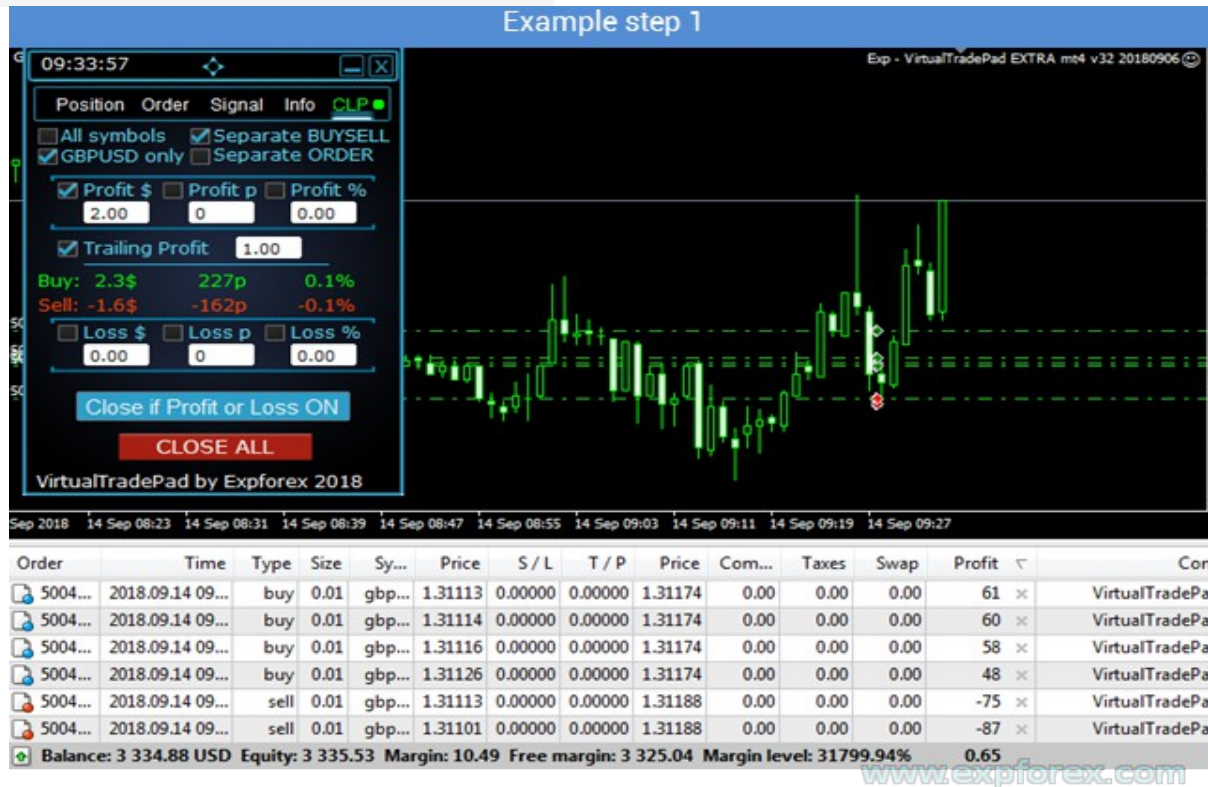
Note: Line and price data may not be accurate on the floating spreadsheet.

Remember! SELL is closed by ASK, and BUY is closed by BID



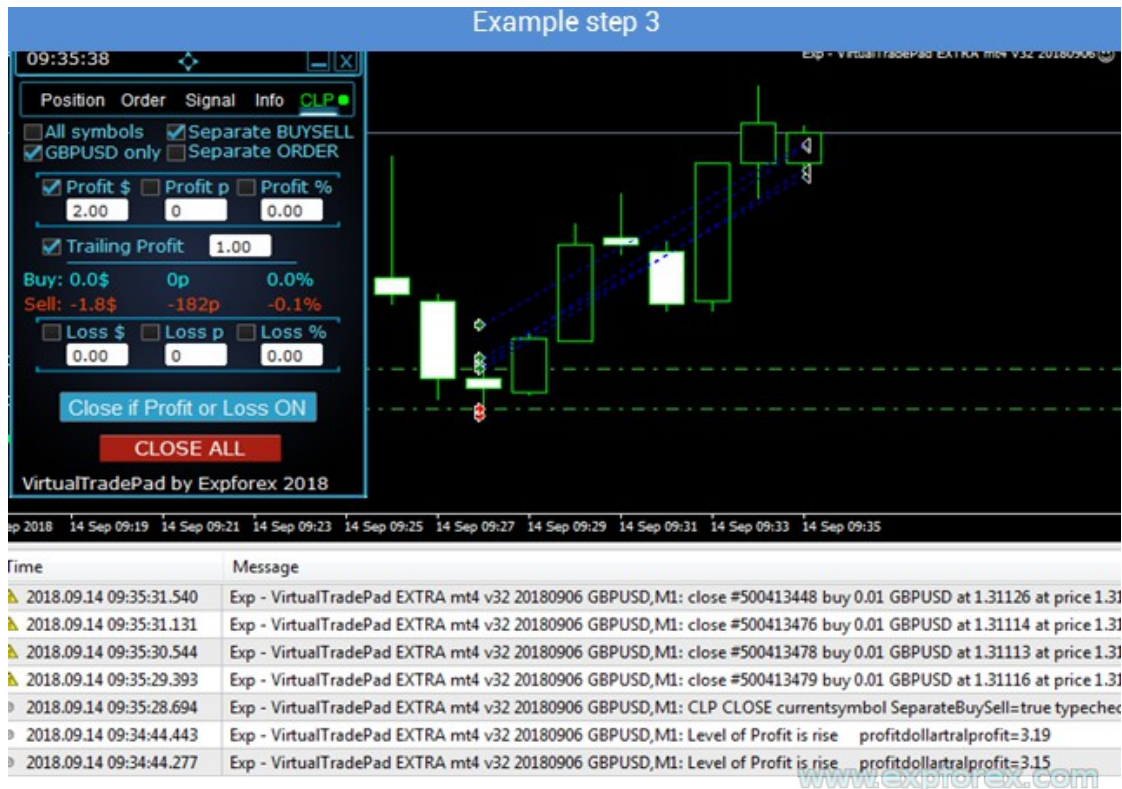


## Example of consistent work of the adviser

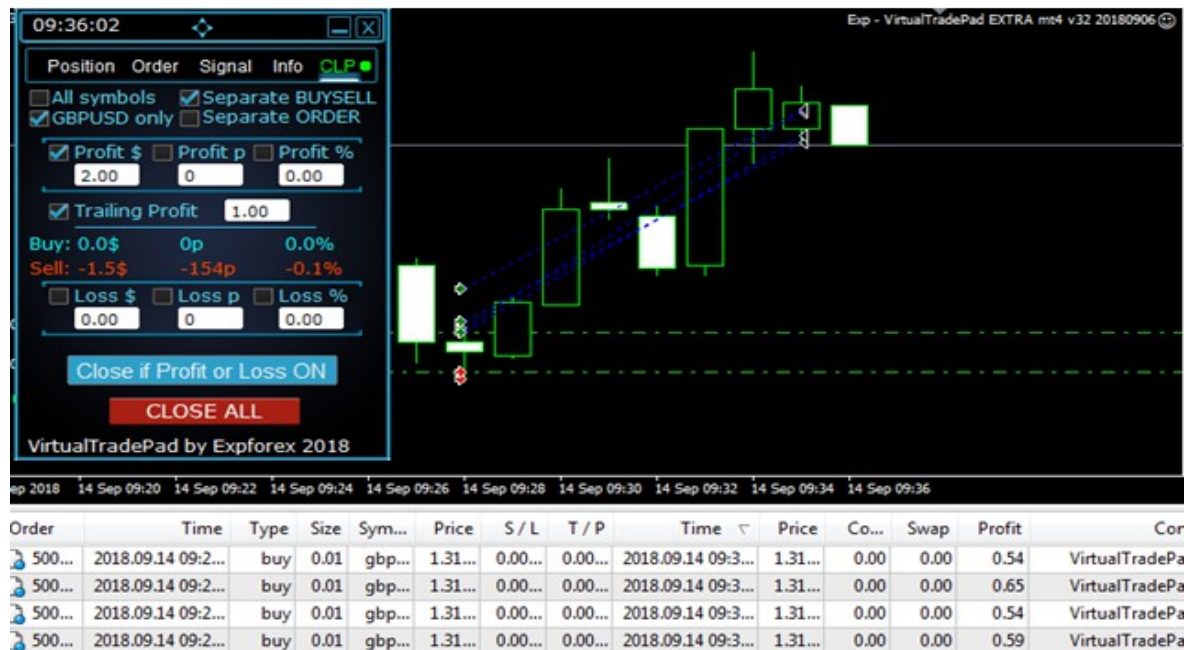




## Example step 3



## Example step 4



## External Variables and Settings

Name	Description
<b>Sounds</b>	Enables/disables <b>sound alerts</b> when opening/closing/modifying positions and orders
<b>HintShow</b>	<b>Turns on / off tooltips</b> when hovering over buttons
<b>Language</b>	<b>language selection tips Language:</b> Spanish, Portuguese (Brazil), German, Chinese, Japanese; By default, the language of prompts will be determined automatically by the language of your terminal. You can also choose your language; <b>The translation was made using the GOOGLE Translator + MQL + Terminal site!</b>
<b>ButtonLanguage</b>	<b>select the language of the text on the buttons and the main language of the panel (information on the tabs)!</b> Available languages: Russian, English, Português, Español, Deutsch! <b>Attention:</b> This parameter affects only the text of buttons and tabs. The text of tooltips can be selected in the Language parameter!
<b>int MagicNumber = 777</b>	<b>The magic number for positions and orders</b> , which will be considered in the calculation, and closing with the CLP panel. 0 - no magic number (Hand trade).  It used to close only those Positions and orders that have a magic number = <b>MagicNumber (and UseAllMagicFromAllAccount = false)</b>  <b>You can set a few magic numbers for tracking and closing of the total profit or loss;</b> <b>for example:</b>  the first digit is intended to indicate the magic number for opening positions and accompany. You can also specify several magic numbers to accompany; e.g.: --- MagicNumber = 777 UseAllMagicFromAllAccount = true: The Advisor monitors all positions on the current symbol in the entire account; --- MagicNumber = 777 UseAllMagicFromAllAccount = false: The Advisor monitors positions with a magic number of 777 for the current symbol on the whole account; --- MagicNumber = 777,888 UseAllMagicFromAllAccount = false: The Advisor follows the positions with the magic number 777 and 888 (opens positions with the magic number 777) by the current symbol on the whole account; --- MagicNumber = 777,888,999 UseAllMagicFromAllAccount = false: The advisor follows the positions with the magic number 777, 888 and 999 (opens positions with magic number

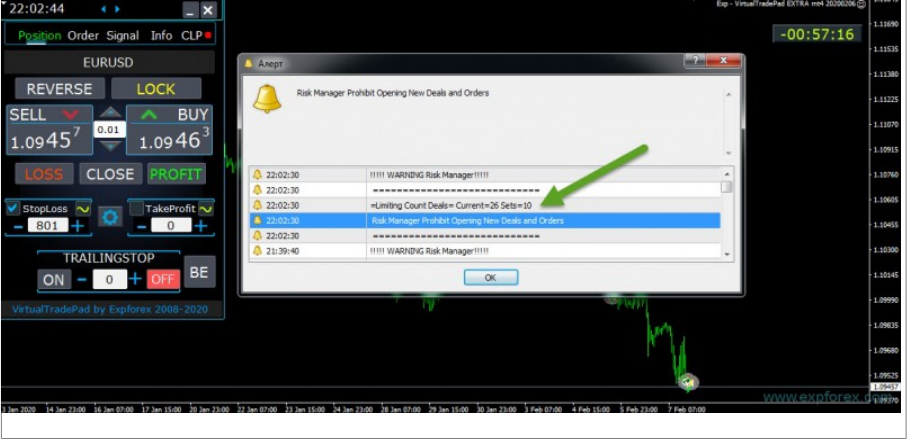
Name	Description
	777) on the current symbol on the whole account;
bool UseAllMagicFromAllAccount = true	<p><b>It allows you to take into account all positions opened in the terminal.</b></p> <p>Example:  <b>UseAllMagicFromAllAccount = true</b>  then all positions with any magic number will take into account the closing of the total profit or loss .....  <b>UseAllMagicFromAllAccount = false</b>  The advisor takes into account only those deals (positions and orders), in which the magic number = MagicNumber.</p>
Show_Future_BE_TP_SL	<p><b>Show break-even and profit-loss levels on the current chart.</b></p> <p>The price of lines is calculated based on the entered values in the fields Profit and Loss in points \ dollars \ percents.  <b>Caution:</b> Only works on the current symbol and when the SEPARATE Orders mode is off.  The lines are shown, at the intersection of which, the function of "closing on profit or loss."</p> <p>Lines are shown separately for Buy and Sell positions, or a common line.  If the line is not shown, then the positions form a lock, which can not be closed by the total profit or loss.  <b>Note:</b> Line and price data may not be accurate on the floating spreadsheet.  <u><b>Remember! SELL is closed by ASK, and BUY is closed by BID</b></u></p>
double CLP_TralOptionsStep= 0	<p><b>The step of changing the level of profit when trailing profits are conventional units (points, deposit currency, percent).</b></p> <p>When the Trailing Profit function is in operation, the Expert Advisor remembers the profit level of each 1 conventional unit.</p> <p>Example:  <b>CLP_TralOptionsStep = 1</b>  The fixation of the level of profit occurs every 1 unit  <b>CLP_TralOptionsStep = 15</b>  The profit level is fixed every 15 units</p>
bool CLP_DeleteStopOrders = false	Delete pending orders when "closing on the total profit or loss."
bool Use_Lots_in_CLP_Points= false	<b>When calculating points of profit or loss, the adviser will also take into account the lot of these positions.</b>

Name	Description
	<p>This option is useful when trading on a hedge account with different lots.</p> <p><b>Example:</b>  Open 2 positions SELL for EURUSD  SELL 0.01 with a profit of 20 points and \$ 0.2  SELL 0.02 with a loss of -12 points and -0.24 dollars</p> <p><b>-When Use_Lots_in_CLP_Points = false</b>, the Expert Advisor will calculate the "clean" items.  In this case, the profit will be -0.04 dollars or 8 points.  As we see, in positions, the position gained profit, but in dollars, it is a loss.</p> <p><b>-When using_Lots_in_CLP_Points = true</b>, the Expert Advisor will calculate the items taking into account the Lots.  In this case, the profit will be -0.04 dollars or -4 points.  When calculating the profit in points and including the option "Include lots in the calculation of profits," the adviser finds the minimum lot from the presented positions and, proceeding from this lot, calculates Points.</p> <p><b>For example:</b>  Minimum position 0.01, 1 "clean" item = 1 point,  If a position with lot 0.02 is opened, then 1 net point = 2 points, including the lot.  If the position with lot 0.05 is opened, then 1 net point = 5 points, including the lot.</p> <p><b>For example:</b>  Open 2 positions SELL for EURUSD  SELL 0.01 with a profit of 20 points and \$ 0.2  SELL 0.02 with a loss of -24 points and -0.24 dollars</p> <p><b>Total: Loss in points = -4 points, loss in dollars = -0.04 dollars!</b></p>
Use_Commission_in_CLP	<p><b>Use calculation of commission when closing positions.</b></p> <ol style="list-style-type: none"> <li>1. <b>True</b> - take into account the commission in the calculations.</li> <li>2. <b>False</b> - do not take into account the commission in the calculations.</li> </ol> <p><b>Attention:</b> The commission is calculated from an open deal and multiplied by 2 (When closing a deal a commission is also charged)  This is the standard way to calculate commission!  In MetaTrader 5, it is impossible to get the type of commission</p>



Name	Description
	<p>calculation from an adviser!</p> <p>If you do not want the adviser to calculate the commission automatically, you can turn off this feature!</p> <p><b>Attention!</b> This function only affects the calculations on the CLP tab, all other tabs work in standard mode, taking into account commissions.</p>
bool <b>AutoCorrect_LevelCLP</b> = true	<p><b>Correction of values in input fields.</b></p> <p>In the loss field, you can now enter only minus values; if the user entered +10, then the system will automatically translate to -10.</p> <p>In the profit field, you can now enter only positive values. If the user entered -10, then the system will automatically translate to +10.</p> <p>CLP_TraOptions, you can enter an only positive value. Otherwise, the Expert Advisor will return an error.</p>
bool <b>CPL_AlerT</b> = false	Send a message on profit/loss on a <b>terminal chart</b>
bool <b>CPL_Mail</b> = false	Send a message on profit/loss on a <b>Mail</b>
bool <b>CPL_Push</b> = false	Send a message on profit/loss on a <b>Push</b>
bool <b>CPL_CloseTerminalAfterClose</b> = false	<b>Closing the terminal after all positions have been closed</b>
<b>CPL_AUTOOFF_AfterClose</b>	<p><b>automatic shutdown of the button "Closing on the total profit or loss" after the closing of all positions.</b></p> <p>The disconnect occurs only when ALL positions are closed.</p> <p>The Magic number specified in the Expert Advisor is taken into account, as well as the symbol for closing.</p> <p>If you choose to close only 1 currency, in this case, the parameter CPL_AUTOOFF_AfterClose is enabled, then the EA waits until all positions for this currency are closed and only after this the EA can turn off the button.</p>
<b>ClosingCurrentTicketOnly</b>	<p><b>ClosingCurrentTicketOnly - Close only the current list of tickets.</b></p> <p>This option will help to avoid problems when my program starts to close positions based on total profit, and the user's adviser starts to open new positions.</p> <ol style="list-style-type: none"> <li>1. <b>ClosingCurrentTicketOnly</b> = <b>true</b>, Then the VirtualTradePad program, if the total profit conditions are met, will close the current list of positions. If new tickets are added to the list of positions, the VirtualTradePad program will ignore them.</li> <li>2. <b>ClosingCurrentTicketOnly</b> = <b>false</b>, Then the VirtualTradePad program, if the total profit conditions are met, will close all positions, even if another adviser opens new</li> </ol>

Name	Description
	positions.
int <b>MAGIC_FONTSIZE</b> = 12	The text size on the chart when using MagicTarget as well as <b>Show_Future_BE_TP_SL</b> and <b>Show_Future_Line</b>
color <b>MAGIC_ORDER</b> = clrYellow	The color of the center line and the opening price of the position and the order on the chart
color <b>MAGIC_STOPLOSS</b> = clrRed	The color of stoploss lines on the graph
color <b>MAGIC_TAKEPROFIT</b> = clrGreen	The color of the takeprofit lines on the graph
color <b>NULLColor1</b> = clrGray	Color in the information in the panel
color <b>PLUS_Color</b> = clrLime	The color of the plus value in the panel information
color <b>MINUS_Color</b> = clrOrangeRed	The color of the minus value in the panel information
color <b>TEXTColor4</b> = clrAqua	The text color in the panel information
Limiting <b>LimitFor</b> = 3	<p><b>Added Risk Manager: Risk Manager Limiting losses / profits / Lots / Numbers</b></p> <p><b>If YOU decided to limit losses on the current client magic, then you can do this in a new block.</b></p> <p><b>Attention:</b> This block does not close the deal! He brings up an alert! The next LimitFor, this parameter is reset to 0. Also, you can enable sending messages to mail and phone when reaching the limits NotificationMailSend</p> <p><b>Block Limiting updated and supplemented!</b> This settings block allows users to limit Profit / loss / lots / number of deals/positions for a specified time. A risk manager who monitors your trading and notifies you that the time limit has been exceeded with Current positions / today / week / month / all the time.</p> <p><b>Settings:</b></p> <ol style="list-style-type: none"> <li>1. <b>CurrentOpenDeals</b> - Take into account current open deals/positions;</li> <li>2. <b>ClosedDeals</b> - Take into account closed deals / positions over time;</li> <li>3. <b>LimitFor</b> - The time during which closed deals / positions in the history will be checked;</li> </ol>

Name	Description
	<p>4. <b>LimitForLosses</b> - Loss limit at which the EA will sent a message, must be specified with -;</p> <p>5. <b>LimitForProfits</b> - Profit limit at which the EA will sent a message;</p> <p>6. <b>LimitForLotsDeals</b> - Limit of Lots of deals / positions, at which the adviser will sent a message;</p> <p>7. <b>LimitForCountDeals</b> - Limit of the number of deals / positions at which the EA will sent a message;</p> <p>8. <b>NotificationMailSend</b> - Send a message to the phone (PUSH) and mail if the limit is exceeded;</p> <p><b>Choices:</b></p> <p>1. <b>DAY</b> - take into account the profit and loss for the current day</p> <p>2. <b>WEEK</b>- take into account the profit and loss for the current week</p> <p>3. <b>MONTH</b>- take into account the profit and loss for the current month</p> <p>4. <b>ALLTIME</b>- account for profit and loss for all time.</p> <p><b>Example:</b>          You need an expert to send you mail and display an alert on the screen when the total loss for open and closed deals, within LimitFor, will be less than -100 dollars:          Your settings will be as follows:</p> <p>1. LimitFor = 0;</p> <p>2. LimitForLosses = -100;</p> <p>3. LimitForProfits = 0;</p> <p>After reaching a loss on the history of the day -100 dollars, the EA will give a message on the screen in the form of Alert and send mail.</p> 
<b>LimitForLosses</b>	The loss value

Name	Description
LimitForProfits	The profit value
NotificationMailSend	Also, you can enable sending messages to mail and phone when reaching the limits NotificationMailSend
filling TypeFilling = Auto	<p><b>The type of fill positions and orders.</b> It is used for MT5 terminal. <b>In AUTO mode, the Expert Advisor tries to determine the fill type automatically. But, in some situations, you need to set the fill type yourself.</b> <b>If you get an error when opening a position</b></p> <p>10030 <b>TRADE_RETCODE_INVALID_FILL</b> An unsupported type of execution of the remainder order is indicated. Set the type of fill that your broker indicates.</p> <p><b>Example:</b> <b>FillOrKill</b> This execution policy means that the order can be executed only in the specified amount. If the market currently does not have a sufficient amount of a financial instrument, then the order will not be executed. The required volume can be made up of several offers available at the moment in the market.</p> <p><b>ImmediateOrCancel</b> It means the agreement to make a deal on the maximum available volume on the market within the limits specified in the warrant. In case of the impossibility of full execution, the order will be executed for an accessible volume, and the unexecuted order volume will be canceled.</p> <p><b>Return</b> This mode is used for market, limit, and stop-limit orders, and only in the modes "Market Execution" and "Stock Execution". In case of partial execution, a market or limit order with a residual volume is not withdrawn but continues to operate. For stop-limit orders, the corresponding limit order with the execution type Return will be created upon activation.</p>



### Question answer on our advisor

**On the chart there are 2 open positions with lots of 0.1 and 0.2. I see that from the current price to the break-even 50 points, that is, loss is 50 points, and you show -150 points, why?**

The calculation in points is correct from our side. Therefore, even if you have 2 positions with different lots. The sum of the points of loss will be higher than the distance from the current price then the break-even points.

The adviser takes into account in the calculation of the spread, swap, commission. Therefore all calculations and indicators of our adviser take into account many factors.

Let's take an example:

if 1 order is minus -10 points, then it is -10 points

if 2 orders are minus -10 points, then it is already -20 points

and if 2 orders with different lots, then lot 0.1 gives -10 points, and lot 0.2 gives -20 points and in total - 30 points because if you put a close at -50 points, you will have 1 order -50 points, then it will close with a loss of -50 dollars but if by your calculation there will be 100 orders there, but the distance is -50 points, then when closing it will be already -5000 dollars

It seems to be worth -50 points, and upon closing the amount can jump from \$ 50 loss to \$ 5000 and so on