

# ***EA MONSTER MANUAL***

**In depth information & screenshots  
showing how each feature works.**

=====

## **MAIN EA SETTINGS**

=====

**Magic Number** (Change this number to be unique for each instance of the EA on the same currency pair. Example: Two EURUSD charts open with EA Monster attached to both with different strategies. Make this number different for each )

**EA Comment** (Used for Account History Identification)

**Lot** (Size of your Lot)

**Place Orders if under the Max spread(in points)** (This will block trades from opening if above this spread in points)

**Maximum price slippage for buy or sell orders** (This will block trades from opening if price slippage is above this amount)

**Attempts to resend order if error** (This will resend order up to this amount if there is an error like spread, slippage etc.)

**Attempts to close order if error** (This will attempt to close order up to this amount if there is an error)

=====

## STRATEGIES

=====

**Grid Recovery On/Off** (This is a state of the Art system to recover from losing trades. Maintain a \$1000 balance if using .01 lot.)

**Grid Distance** (This is the distance that price will travel in loss before opening an incremental averaging down trade.)

**Virtual TP in \$** (This is the profit dollar amount that if reached will close all open trades)

**Grid Magic Number** (This is a unique magic number to distinguish the Grid Virtual TP from the initial opening trades TP)

**Increase lot size by a factor of X after loss** (This will increase your lot size by this factor after 1 loss and then go back to your normal lot size)

=====

### Risk Management On/Off

**Incremental Balance Amount**

**Incremental Lot Size to Balance Increment**

Incremental Lot Size Money Management System that will adjust your lot size by Balance Equity Increments.

Example: \$50 Balance = 0.01 Lot Size; \$100 Balance = 0.02 Lot Size; \$150 Balance = 0.03 Lot Size

=====

### Trailing Equity Balance

**Maintain X% of Highest Equity**

(Trailing Balance Equity System that will trail a percentage of your balance. Example: If set to 70% the Balance will trail 30% and if it draws down around 30% it will not trade anymore and preserve 70% of the highest Balance since EA was turned on.)

=====

**If trading account gets below X\$ it stops trading**

=====

**If free margin gets below X\$ it stops trading**

=====

**Daily Target Xpips Profit(Set to 5000 to disable)**

**Daily Target Xpips Loss(Set to 5000 to disable)**

**Weekly Target Xpips Profit(Set to 5000 to disable)**

**Weekly Target Xpips Loss(Set to 5000 to disable)**

**Monthly Target Xpips Profit(Set to 5000 to disable)**

**Monthly Target Xpips Loss(Set to 5000 to disable)**

(This feature will stop trading for the day, week, or month when the target is hit and resume trading when the next period begins. Set your targets to 5 or 10 pips below your TP or SL)

=====

**\*\*\* Setting for MA Cross and MA Trend \*\*\***

MA averaging period

averaging method

applied price

(This is the setting for the Price Cross MA feature in the open trades sections and the MA Trend filter in the filtering section)

=====

**Invert Trades True/False**

(Set to True to open all buy trades on sell signals and all sell trades on buy signals)

=====

## Pending Orders Settings

Open 2 Buy Orders or 2 Sell Order

Open 1 Buy Order and 1 Sell Order

Invert Open 1 Buy and 1 Sell

OCO Input

Delete Pending Orders After X seconds

Pending Buy

X PIPS above

X PIPS below

Pending Sell

X PIPS above

X PIPS below

(The following images show how this feature works)





=====

## OPEN TRADES SECTION

=====

### DEFAULT OPEN STRATEGY

(Switch this to false to use other open trade features)

Body of Candle is X% Greater than previous X Number of candles

**Open a Buy Trade if Bull Candle. Open a Sell Trade if Bear Candle.**

On/Off

Greater than X%

Candle Body must be more than X Pips in Size

Candle Shift(0 Opens Immediately)



=====

## Wick of Candle is X% of Body Open Trade

On/Off

Candle Low Wick > % Buy, Candle High Wick > % Sell

Candle Body must be more than X Pips in Size

Candle Shift(0 Opens Immediately)



=====

**Open Buy on High, Sell on Low After # of Candles**

Buy on High, Sell on Low(0 disable)





=====

## Open Trades by Support and Resistance

Use Sunday Data True/False

Support and Resistance Inputs

X Bars(0 pens immediately)

Daily Open Trades True/False

Daily SR Levels Open Trades True/False

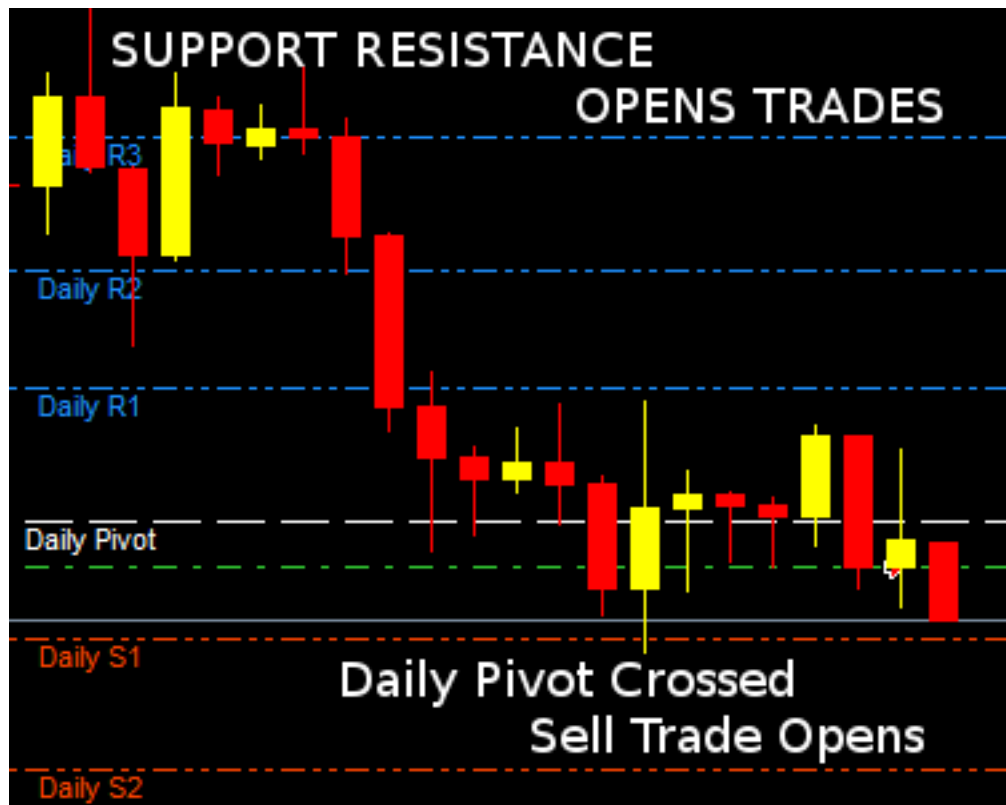
Weekly Open Trades True/False

Weekly SR Levels Open Trades True/False

Monthly Open Trades True/False

Monthly SR Levels Open Trades True/False

Daily, Weekly and Monthly Pivot Colors

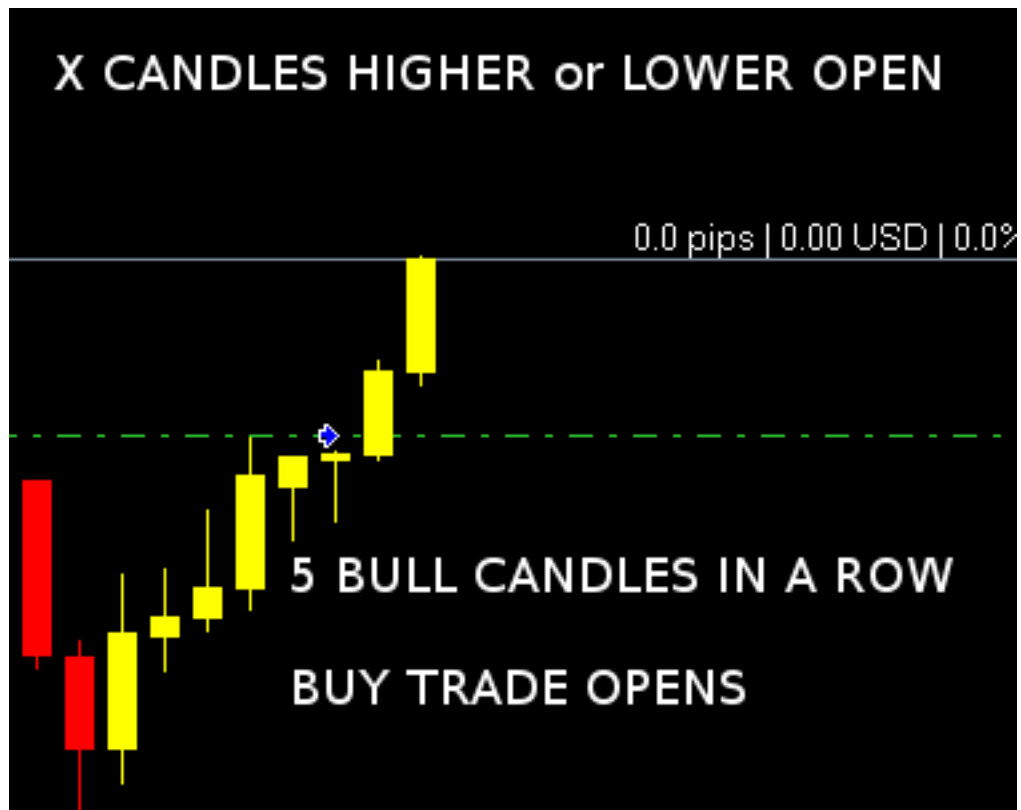


=====

**Open Buy if X Candles Higher, Open Sell if X Candles Lower**

Open Trade if X candle close high/low on/off

Open Trade if X candle close high/low



=====

### **Open Trades when Speed is Moving X pips in X Seconds**

on/off Open Trades by X Pips in X Seconds

X Open Pips

X Open Seconds

=====

### **X Pips in X Seconds Close Reverse - Same as Open Speed**

Close Trade in Reverse Direction On/Off

=====

### **X Pips in X Seconds Close Reverse - Different Speed**

Close Trade in Reverse Direction On/Off

Close Reverse Trade X Pips

Close Reverse Trade X Seconds

=====

### **X Pips in X Seconds Close Trade Settings**

On/Off Close when Speed slows down to this level

Close X pips

Close X seconds



=====

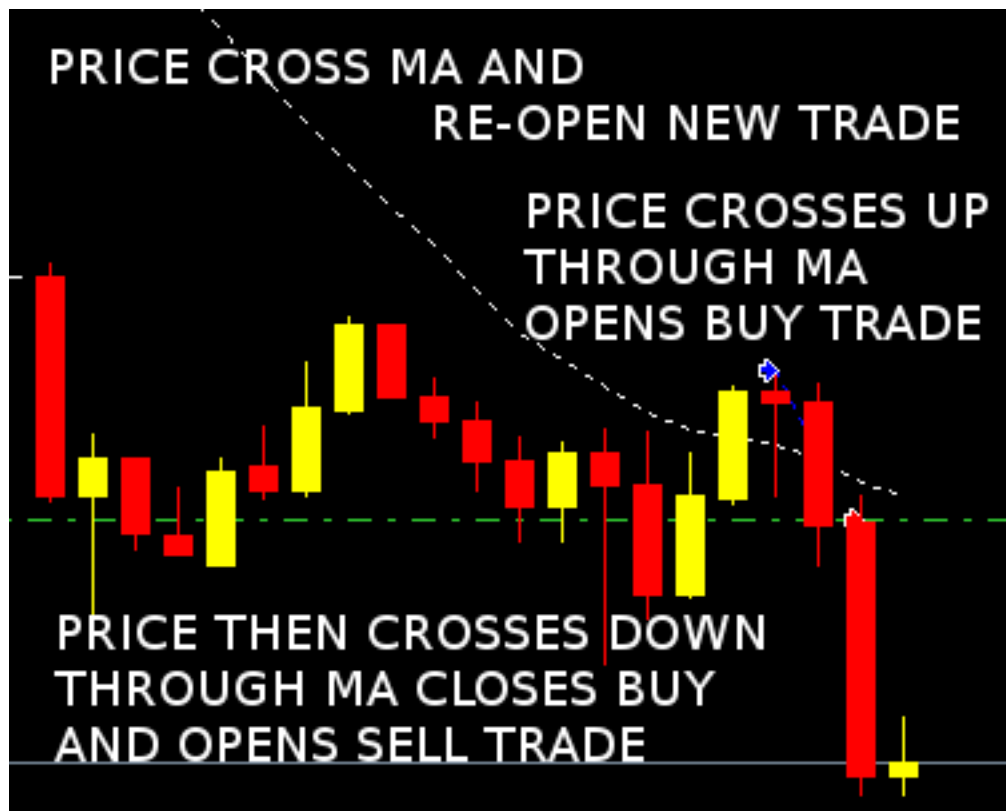
### Open Trades by Price Cross MA

On/Off MA Cross Open Trades(MA Settings in Strategy Section)

Close Trade and Re-Open New when price hits Moving Average

Wait X number of Candles to Reopen after Trade Closes

THE MOVING AVERAGE SETTINGS ARE FOUND IN THE STRATEGIES  
SECTION **“\*\*\* Setting for MA Cross and MA Trend \*\*\* ”**



=====

### Open Trades by Price Cross MA Open Buy

On/Off Price MA Open Buy

MA averaging period

averaging method

applied price

=====

### Open Trades by Price Cross MA Open Sell

On/Off Price MA Open Sell

MA averaging period

averaging method

applied price

=====

### Open Trades by MA Cross MA

On/Off MA Cross MA Open Trades

0 Opens Immediately 1 Opens on Candle Close

1st MA averaging period

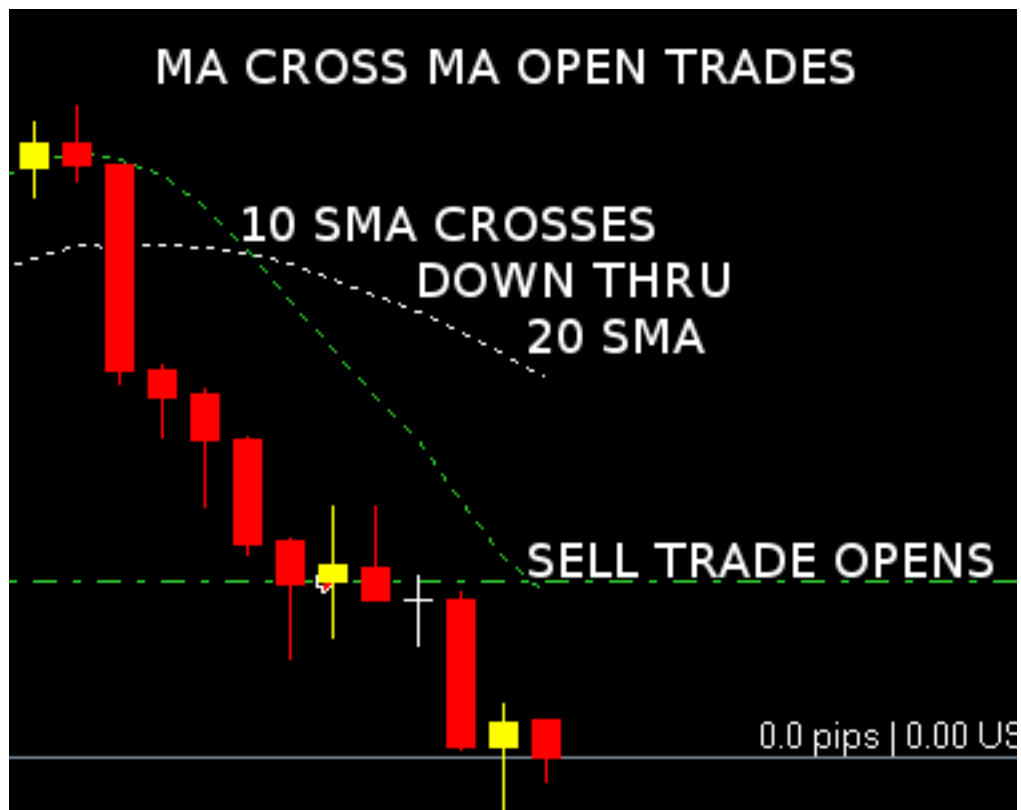
1st averaging method

1st applied price

2nd MA averaging period

2nd averaging method

2nd applied price



---

## Open OUT Trade Bollinger Bands Settings

Open Buy on cross Upper BB Band

Open Sell on cross Lower BB Band



## Open IN Trade Bollinger Bands Settings

Open Sell on cross Upper BB Band

Open Buy on cross Lower BB Band

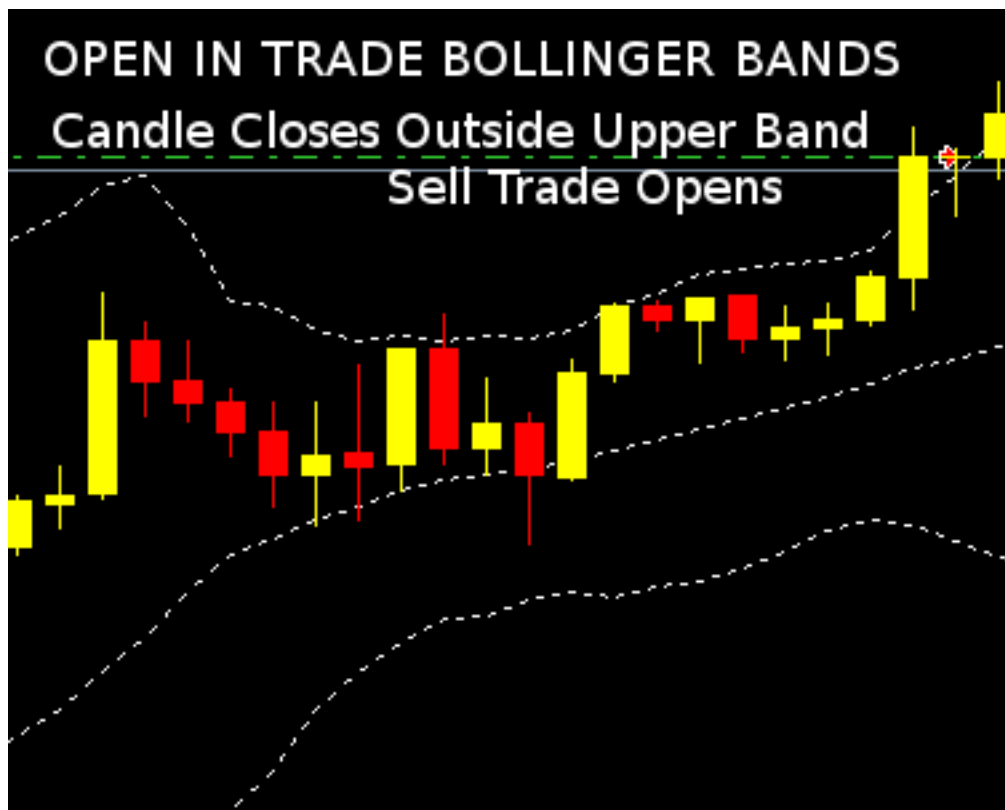
## Open when X Candles Close After Bands

averaging period

standard deviations

bands shift

applied price



=====

## Open Trades by RSI True/False

Sells Open Cross Down Through Level Line

Buy's Open Cross Up Through Level Line

RSI period

RSI applied price





=====

## Open Trades By Stochastic

K-period

D-period

Final smoothing

Averaging method

0 - Low/High 1 - Close/Close

Midpoint Line(Opens Buy Cross UP - Open Sell Cross Down)



On/Off Stochastic Line(Open Trade)

Stochastic Level Line True/False

Stochastic Line - Cross Line Down Sell

On/Off Stochastic Line(Open Trade)

Stochastic Level Line True/False

Stochastic Line - Cross Line up Buy

**Open on Stochastic Cross On/Off**

Wait X candles to open or 0 to open immediately



=====

## TAKE PROFIT AND CLOSE TRADES SECTION

=====

**Take Profit (pips value) if 0 disable**

=====

**Stop Loss (pips value) if 0 disable**

=====

**Trailing Start (if 0 disable)**

Trailing Stop

Trailing Step

=====

**Break Even Settings**

After X Pips in profit move stop loss to Break-Even(If 0 disable)

Lock in X pips for Break-Even

=====

**Candle Trailing Stop Settings**

On/Off

Trailing Stop Candle

=====

### **Moving Average Close Buys**

Close Buys True/False

MA averaging period Buys

Averaging method Buys

Applied Price Buys

=====

### **Moving Average Close Sells**

Close Sells True/False

MA averaging period Sells

Averaging method Sells

Applied Price Sells



=====

## MA Cross MA Close Trades

On/Off

0 Closes Immediately 1 Closes on Candle Close

1st MA averaging period

1st averaging method

1st applied price

2nd MA averaging period

2nd averaging method

2nd applied price



=====

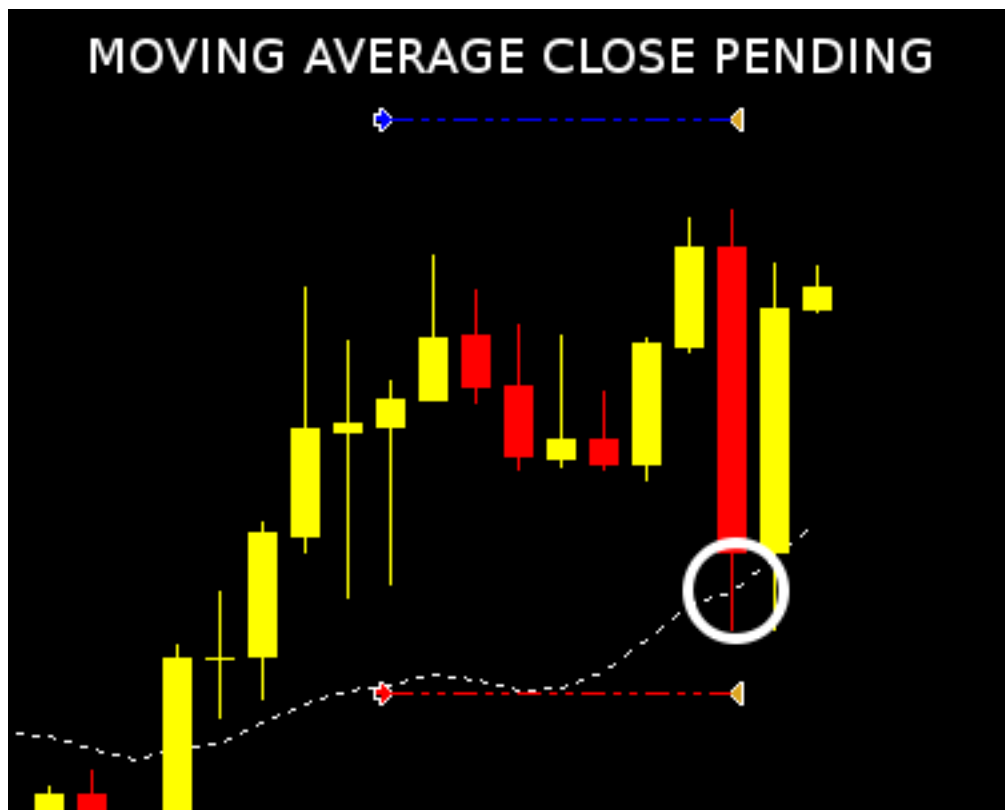
## Moving Average Close Pending

Close All Pending Order True/False

MA averaging period

averaging method

applied price



=====

## Close Trade Bollinger Bands Settings

Averaging period

Standard deviations

Bands Shift

Applied Price

## Bollinger Bands Close Trades

0 Close Immediately - 1 Close on Candle Close

Close Buys & Sells on Upper Band True/False

Close Buys & Sells on Lower Band True/False

Close Only Sells on Upper Band True/False

Close Only Buys on Lower Band True/False

Close Only Buys on Upper Band True/False

Close Only Sells on Lower Band True/False

Close Only Buys Re-Enter from Upper Band True/False

Close Only Sells Re-Enter from Lower Band True/False

Close All on Cross Middle Band True/False



=====

Close on High/Low for X number of Candles, If 0 disable





=====

### Loss after X Candles On/Off

Re-Open a New Trade in the new direction On/Off

Loss after X number of Candles the trade is closed



=====

### **1st Stochastic Close Trade Settings**

Same K and Slowing as Open Trades Settings

Top Level Line Closes Buys

Bottom Level Line Closes Sells

=====

### **2nd Stochastic Close Trade Settings**

New K and Slowing Settings to Close Trades

Top Level Line Closes Buys

Bottom Level Line Closes Sells

K-period

D-period

Final Smoothing

Averaging Method

Wait X candles to close or 0 to close immediately



=====

**(RSI Close Trades Settings)**

**(Top Line Closes Buys, Bottom Line Closes Sells)**

RSI Close Trades On/Off

RSI - Top Line Closes Buy Trades

RSI - Bottom Line Closes Sell Trades

RSI period

RSI applied price

**(RSI Close Trades Settings)**

**(Top Line Closes Sells, Bottom Line Closes Buys)**

RSI Close Trades On/Off

RSI - Top Line Closes Sell Trades

RSI - Bottom Line Closes Buy Trades

RSI period

RSI applied price



=====

## Close Trades After X Seconds Timer On/Off

Seconds before Close

=====

## FILTERING TRADES SECTION

=====

### One Trade Per Bar True/False

(This will only allow one trade to open per bar)

=====

### Allow Trades Only Outside Bollinger Bands

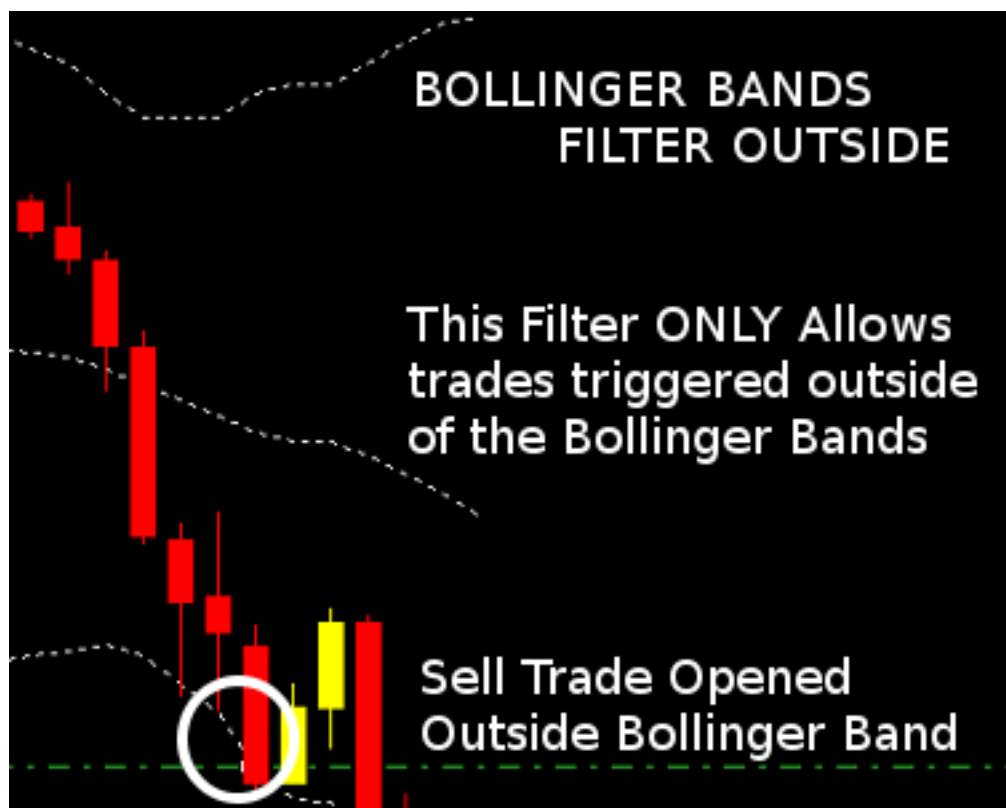
On/Off

Averaging Period

Standard Deviations

Bands Shift

Applied Price



=====

## Allow Trades Only Inside Bollinger Bands

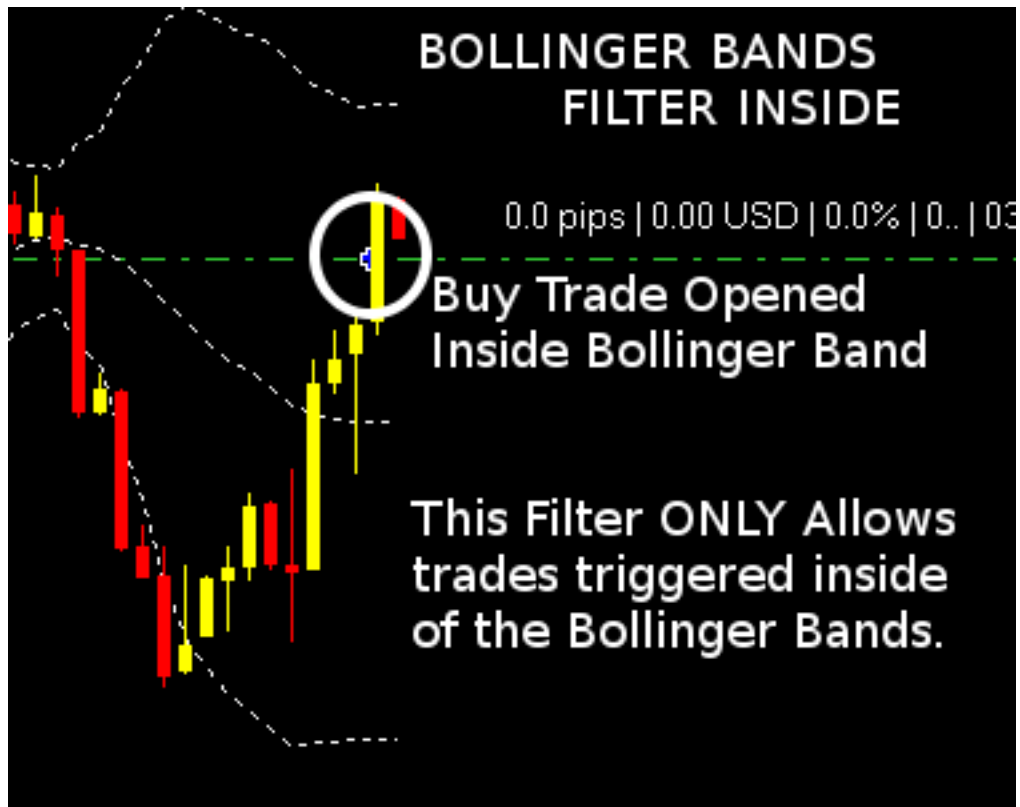
On/Off

Averaging Period

Standard Deviations

Bands Shift

Applied Price



=====

## 1st MA > or < 2nd and 3rd Filter Trades

On/Off

MA 1 averaging period

MA 1 averaging method

MA 1 applied price

MA 2 averaging period

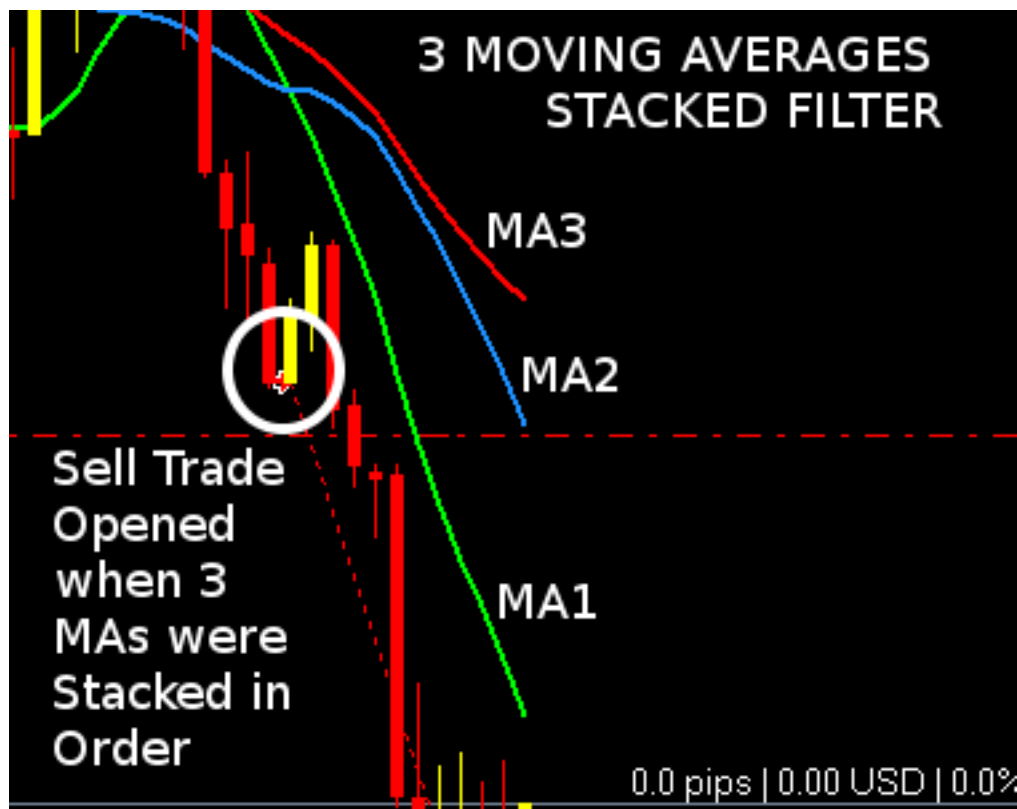
MA 2 averaging method

MA 2 applied price

MA 3 averaging period

MA 3 averaging method

MA 3 applied price



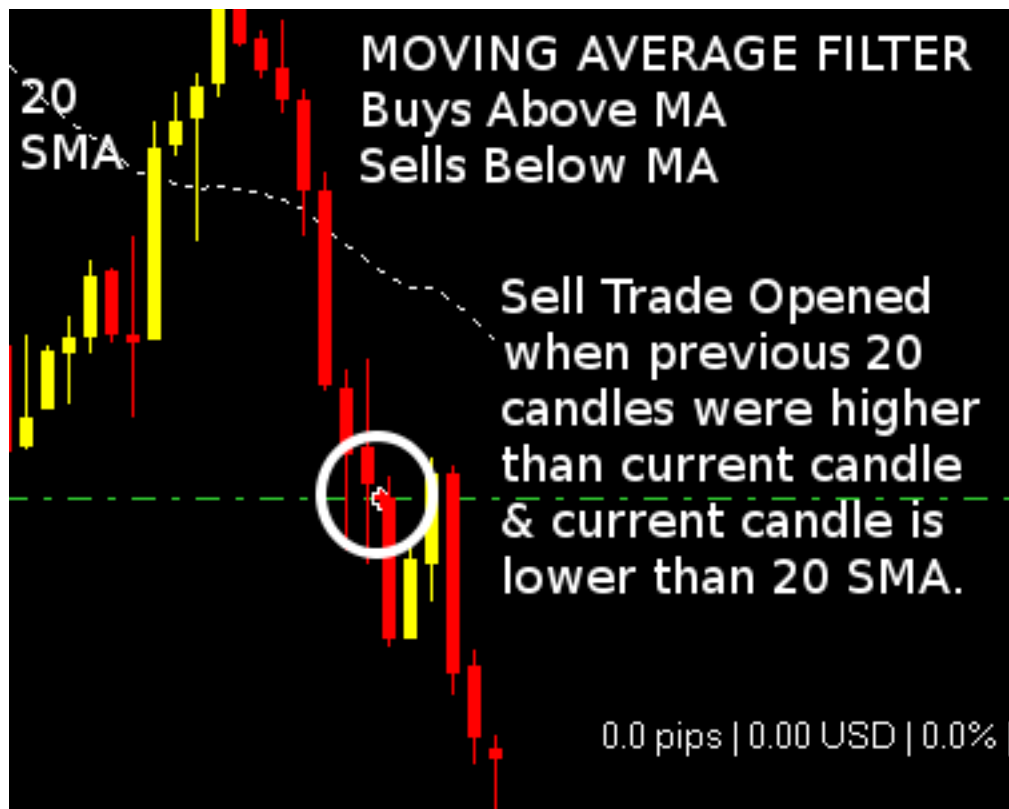
=====

## MA Filter Buys Above MA and Sells Below MA

Filter Buys Above MA and Sells Below MA True/False

X Candles Back(Minimum 2)

THE MOVING AVERAGE SETTINGS ARE FOUND IN THE STRATEGIES SECTION **“\*\*\* Setting for MA Cross and MA Trend \*\*\* ”**



=====

### **Allow Trades X Pips Above MA then Block**

This feature will allow trades up to Xpips then block

### **Allow Buys Above MA then Block True/False**

Above XPips & Above MA

MA averaging period

Averaging Method

Applied Price

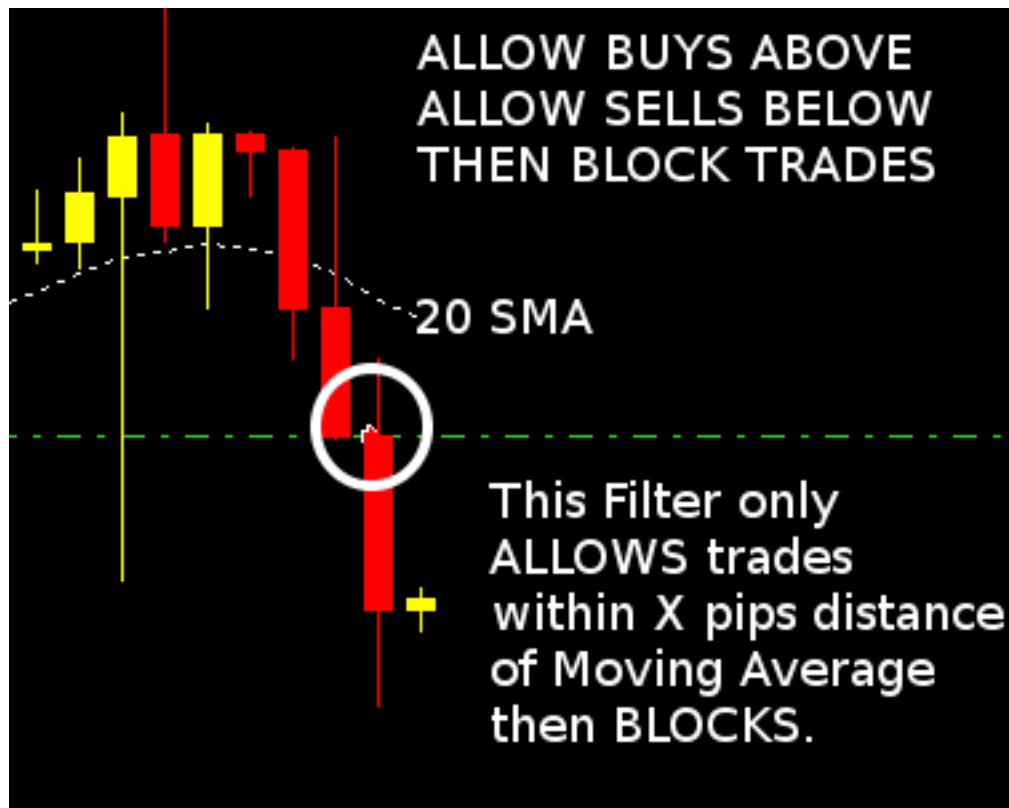
### **Allow Sells Below MA then Block True/False**

Above XPips & Above MA

MA averaging period

Averaging Method

Applied Price





=====

### **MA 1 Block Settings**

This feature will block trades up to Xpips then allow

#### **MA 1 Block Buys Above**

Block Buy Trades Above MA up to X Pips

XPips Above MA

MA averaging period

averaging method

applied price

#### **MA 1 Block Sells Below**

Block Sell Trades Below MA up to X Pips

XPips Above MA

MA averaging period

averaging method

applied price

=====

### **MA 2 Block Settings**

This feature will block trades up to Xpips then allow

#### **MA 2 Block Buys Above**

Block Buy Trades Above MA up to X Pips

XPips Above MA

MA averaging period

averaging method

applied price

## MA 2 Block Sells Below

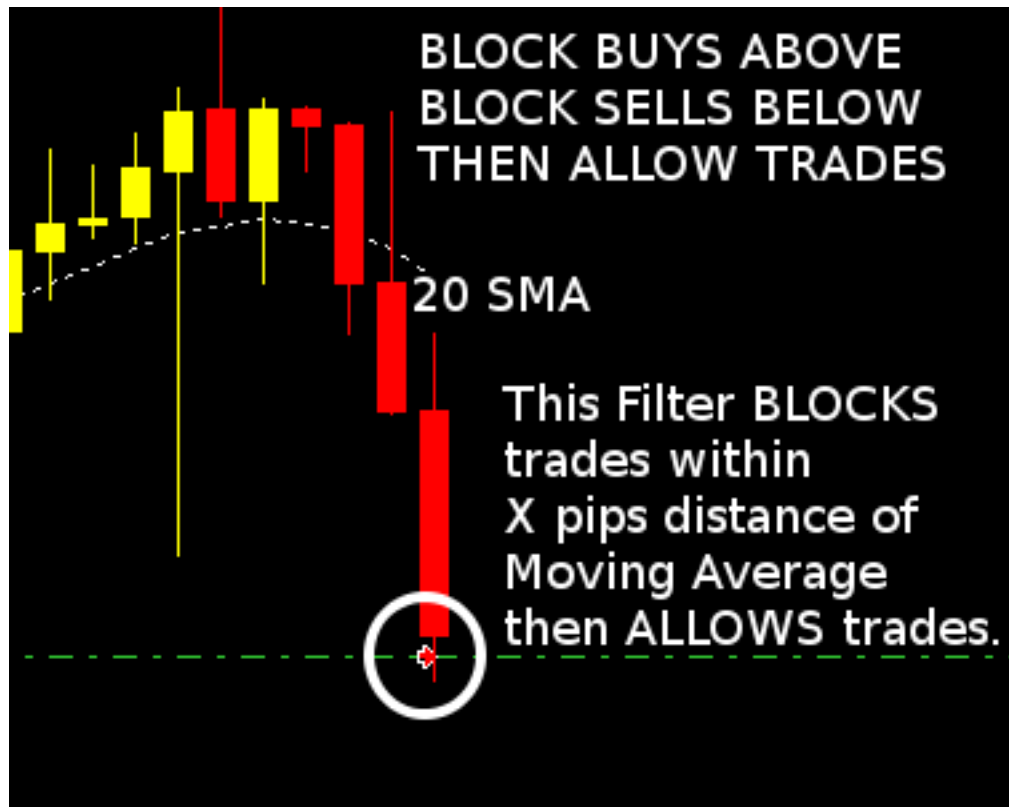
Block Sell Trades Below MA up to X Pips

XPips Above MA

MA averaging period

averaging method

applied price



=====

## MA Filter Sells Above MA and Buys Below MA

Filter Buys Above MA and Sells Below MA True/False

X Candles Back(Minimum 2)

THE MOVING AVERAGE SETTINGS ARE FOUND IN THE STRATEGIES SECTION **“\*\*\* Setting for MA Cross and MA Trend \*\*\* ”**

**\*\* MUST SET INVERT TRADES TO TRUE FOR THIS TO WORK\*\***

**\*\* MA Settings are Under the Strategy Section\*\***



=====

**This feature will block trades up to Xpips then Allow**

### **MA Block Sells Above**

Block Sell Trades Above MA up to X Pips

XPips Above MA

MA averaging period

averaging method

applied price

### **MA Block Buys Below**

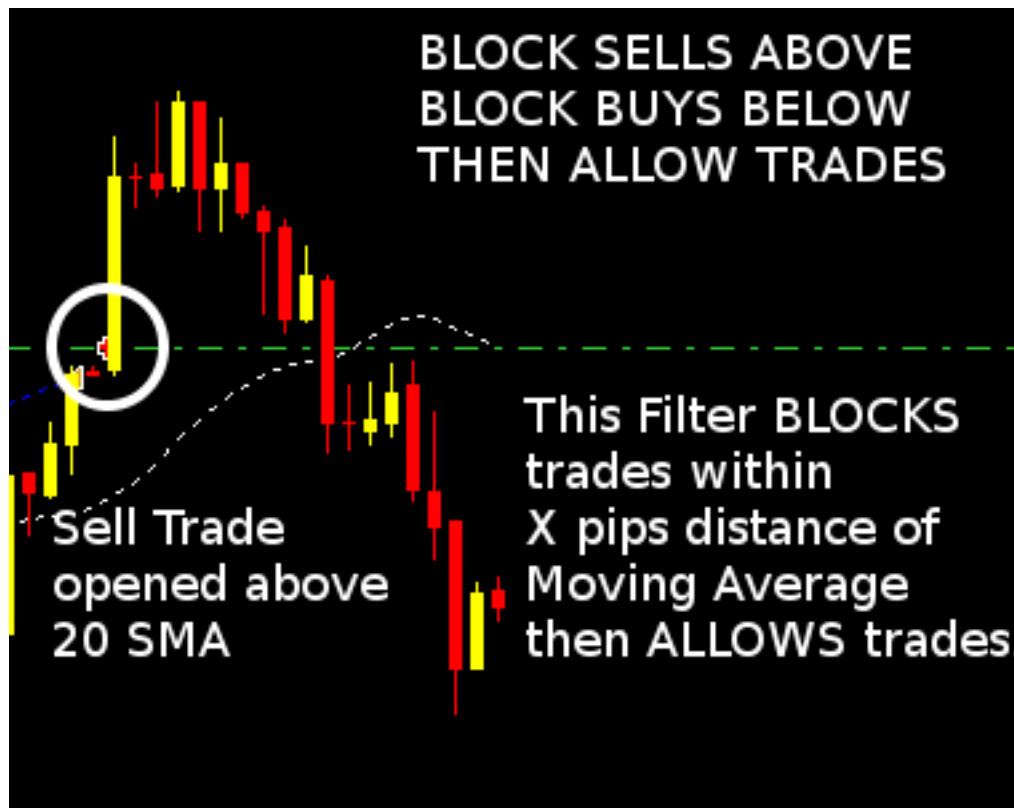
Block Buy Trades Below MA up to X Pips

XPips Above MA

MA averaging period

averaging method

applied price



### **MA Above XPips Invert On**

Invert will be OFF til XPips Distance Above or Below MA

### **Above XPips and Above MA Invert On**

Above XPips - Above MA turn Invert On True/False

XPips Value

MA averaging period

averaging method

applied price

### **Above XPips and Below MA Invert On**

Above XPips - Below MA turn Invert On True/False

XPips Value

MA averaging period

averaging method

applied price

=====

### **MA Above XPips Invert Off**

Invert will be ON til XPips Distance Above or Below MA

### **Above XPips and Above MA Invert Off**

Above XPips - Above MA turn Invert Off True/False

XPips Value

MA averaging period

averaging method

applied price

### **Above XPips and Below MA Invert Off**

Above XPips - Below MA turn Invert Off True/False

XPips Value

MA averaging period

averaging method

applied price

=====

### **Candle Trend Filter**

Allows Trades when Candles are all High or All Low

Candle Trend Filter On/Off

Close Trade when One Candle Changes On/Off

TF 1 on/off

Candles num (0 for current candle)

TF 1

TF 2 on/off

Candles num (0 for current candle)

TF 2

TF 3 on/off

Candles num (0 for current candle)

TF 3

TF 4 on/off

Candles num (0 for current candle)

TF 4

TF 5 on/off

Candles num (0 for current candle)

TF 5

TF 6 on/off

Candles num (0 for current candle)

TF 6

TF 7 on/off

Candles num (0 for current candle)

TF 7

TF 8 on/off

Candles num (0 for current candle)

TF 8

TF 9 on/off

Candles num (0 for current candle)

TF 9

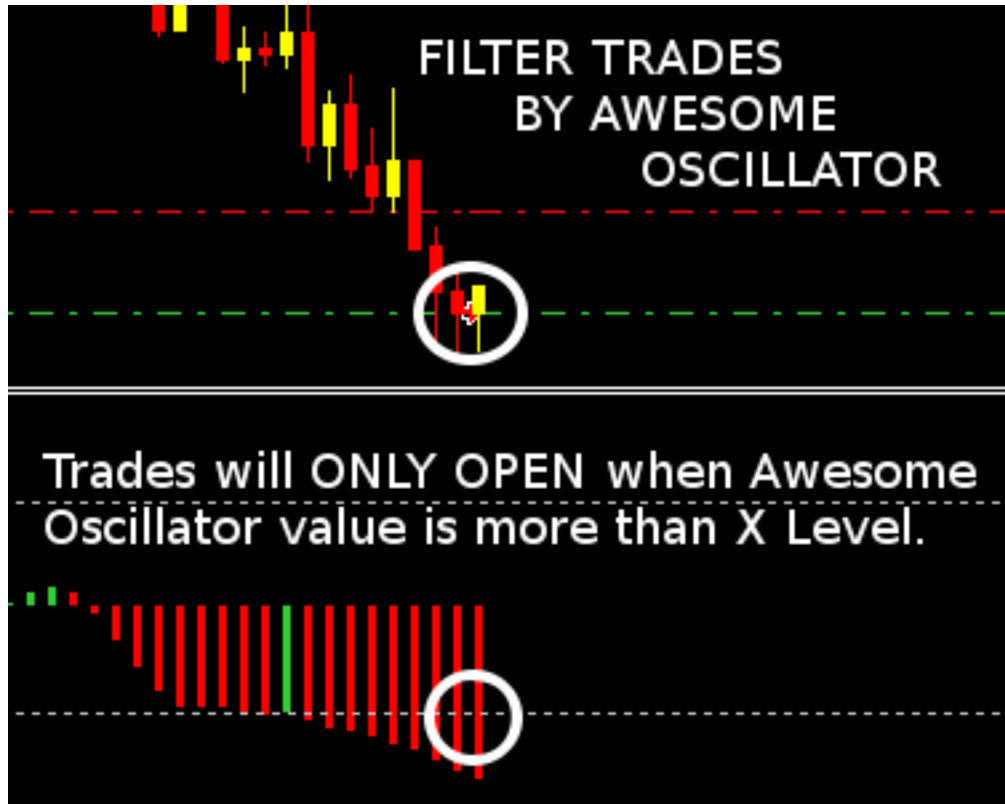
=====

## Awesome Oscillator Filter

On/Off

Only Buy Order Greater than X

Only Sell Order Less than X



=====

### Block Trades by RSI

Block Trades by RSI True/False

Allow Above, Block Below

Allow Below, Block Above

RSI period

RSI applied price

=====

### Filter Trades by RSI

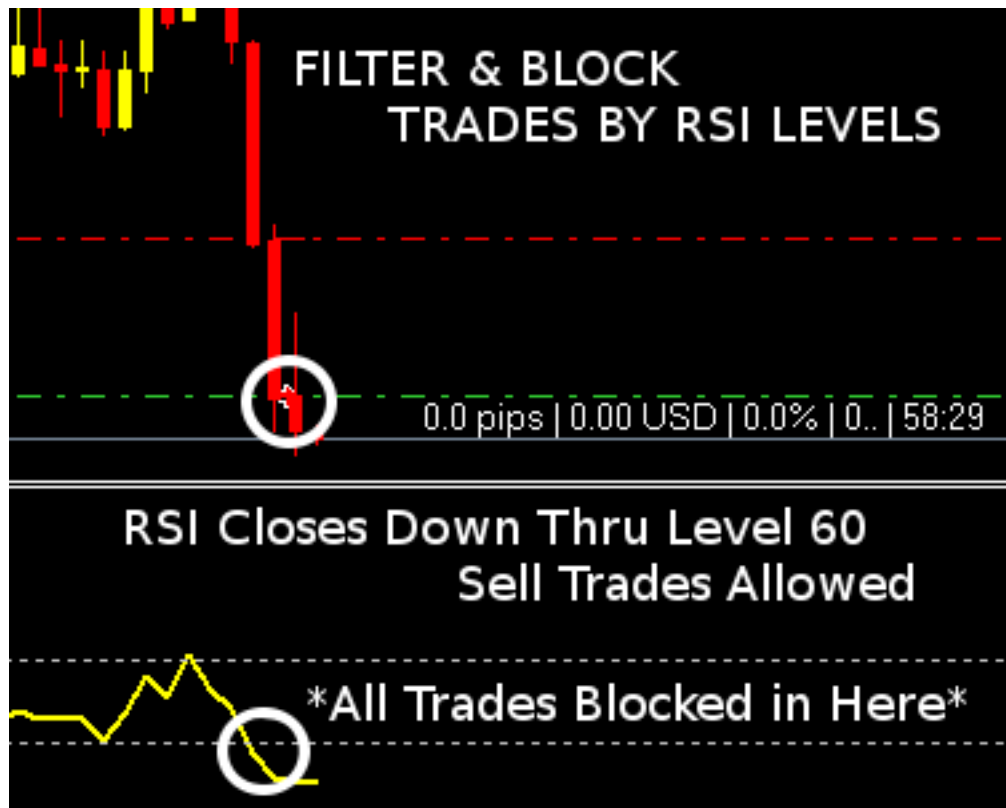
Filter Trades by RSI True/False

Allow Only Buys Above Line

Allow Only Sells Below Line

RSI period

RSI applied price





=====

### Stochastic Filter

Above Top Line Only Sells

Below Bottom Line Only Buys

=====

### Stochastic No Trades Area

Top Line

Bottom Line

True Blocks Outside - False Blocks Inside



=====

### **Look Back X Candles Settings**

Look Back X Candles if 0 Disabled

If X percent of UP Candles filter only BUY orders

If X percent of DOWN Candles filter only SELL orders



=====

**DAY OF WEEK FILTER SECTION**

=====

Day of Week Filter On/Off

Close trade at the Stop Time

Daily Start Time

Daily Stop Time

Monday - True/False

Tuesday - True/False

Wednesday - True/False

Thursday - True/False

Friday - True/False

=====

=====