



ATROPOS X

Multi-Engine Signal & Market State Indicator for MetaTrader 5

User Guide & Setup Manual

Atropos X is not just an arrow indicator. It is a flexible trading workspace that combines signal engines, filters, Linear Regression context, alerts, and a live state panel into one structured MT5 tool.

Two Signal Engines

Choose UT Bot or Range Filter based on your market and style.

Selective Filters

Use EMA, MACD, RSI, ADX, STOCH, CHOP, ATR and VLTY only when they improve the signal quality.

Live State Panel

Read the current market condition faster from one panel instead of stacking many indicators.



Introduction

How to use Atropos X effectively

- Start simple. Choose one engine first and observe the raw signals.
- Do not enable every filter blindly. One or two filters are often enough.
- Different instruments and timeframes may respond better to different filters.
- Use blocked signals and the state panel to understand what the indicator is doing.

MAIN PURPOSE

Atropos X helps you build your own signal environment. It combines engines, filters, market readings, and visual context in one place.

BEST MINDSET

Use Atropos X as a decision-support tool. Test settings by symbol and timeframe, then keep only the filters that improve your setup.

Atropos X can be useful for:

- Beginners who want a clearer structure
- Discretionary traders
- Scalpers and intraday traders
- Traders who compare engines
- Users who prefer cleaner charts
- Traders who want fewer separate indicators



ATROPOS X

User Guide & Setup Manual

Quick Start Workflow

PRACTICAL NOTE

If you turn on too many filters at once, it becomes harder to understand what is helping and what is blocking signals.

- 1 Attach Atropos X to your chart.
- 2 Choose the signal engine: UT Bot or Range Filter.
- 3 Choose the calculation source: Regular Candles or Heiken Ashi.
- 4 Keep most filters OFF at first.
- 5 Watch the arrows and blocked markers.
- 6 Read the state panel to understand the market condition.
- 7 Add one filter at a time and compare the difference visually.
- 8 Save the setup that works best for your symbol and timeframe.



ATROPOS X

User Guide & Setup Manual

How Signals & Blocked Signals Work

BUY SIGNAL

A green upward arrow marks a buy signal.

STATE PANEL ROLE

If the Gate shows BLOCKED, the Reason row tells you which filter caused the block.

SELL SIGNAL

A yellow/orange downward arrow marks a sell signal.

WHY THIS MATTERS

Blocked markers are not bugs. They help you understand how your filters are behaving in live market conditions.

BLOCKED SIGNAL

A green X means a signal was detected, but one or more filters blocked it.

BEST PRACTICE

Watch both the arrows and the blocked markers while testing. This is one of the fastest ways to see whether a filter is helping or over-blocking.



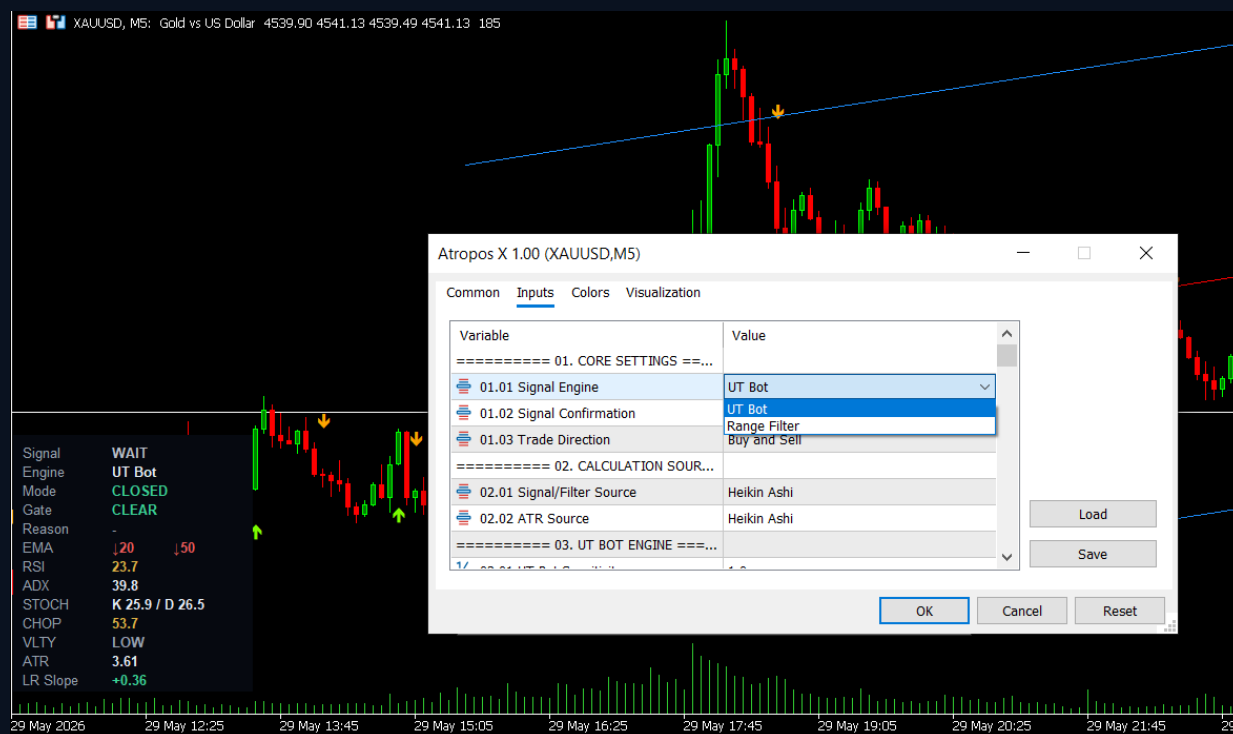
Step 1 — Signal Engine

Choose the main signal engine used to generate entries.

UT Bot is more active and responsive. Range Filter is smoother and often produces a more filtered signal flow.

MAIN OPTIONS: UT Bot or Range Filter.

Input screenshot — Step 1





ATROPOS X

User Guide & Setup Manual

Step 2 — Calculation Source

WHAT IT DOES

Choose the data source used by the signal/filter calculations and ATR calculations.

PRACTICAL NOTE

This affects calculation behavior, not just candle appearance. If the source is Heiken Ashi, the logic still uses Heiken Ashi values.

MAIN OPTIONS: Signal/Filter Source: Regular Candles or Heiken Ashi. ATR Source: Regular Candles or Heiken Ashi.

Input screenshot — Step 2





ATROPOS X

User Guide & Setup Manual

Step 3 — Linear Regression

WHAT IT DOES

Turn the Linear Regression visual context on or off.

PRACTICAL NOTE

Linear Regression helps show market slope, channel structure, and price location. It adds context, but it does not guarantee direction by itself.

MAIN OPTIONS: Off or On.

Input screenshot — Step 3





ATROPOS X

User Guide & Setup Manual

Step 4 — EMA Gate

WHAT IT DOES

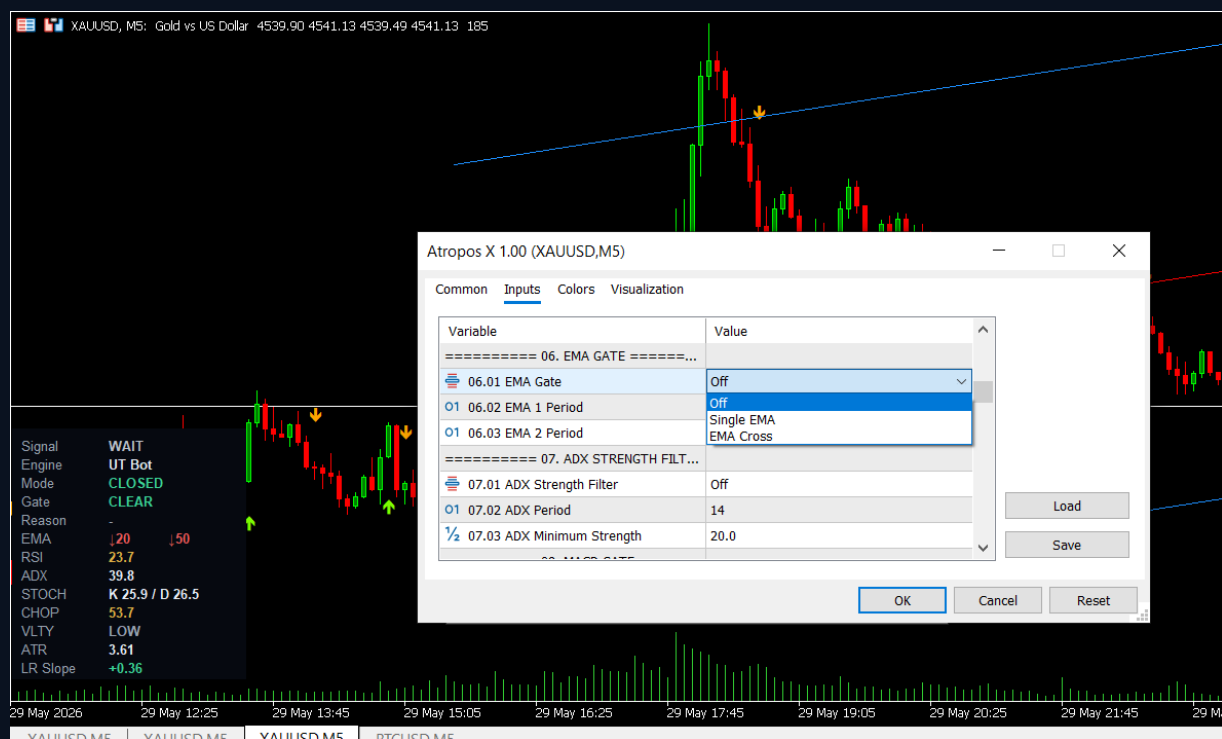
Apply EMA-based trend filtering to the signals.

PRACTICAL NOTE

Single EMA checks price/trend bias against one EMA. EMA Cross uses the fast/slow EMA relationship. Useful for trend-following setups.

MAIN OPTIONS: Off, Single EMA, or EMA Cross.

Input screenshot — Step 4





ATROPOS X

User Guide & Setup Manual

Step 5 — ADX Strength Filter

WHAT IT DOES

Use ADX to require trend strength before accepting a signal.

PRACTICAL NOTE

ADX measures strength, not direction. It can help avoid weak market conditions, but too much filtering may reduce signals.

MAIN OPTIONS: Off or Trend Strength.

Input screenshot — Step 5





ATROPOS X

User Guide & Setup Manual

Step 6 — MACD Filter

WHAT IT DOES

Use MACD as a momentum confirmation layer.

PRACTICAL NOTE

Line vs Signal compares the MACD line to the signal line. Histogram mode focuses on momentum expansion or weakness.

MAIN OPTIONS: Off, Line vs Signal, or Histogram.

Input screenshot — Step 6





ATROPOS X

User Guide & Setup Manual

Step 7 — RSI Gate

WHAT IT DOES

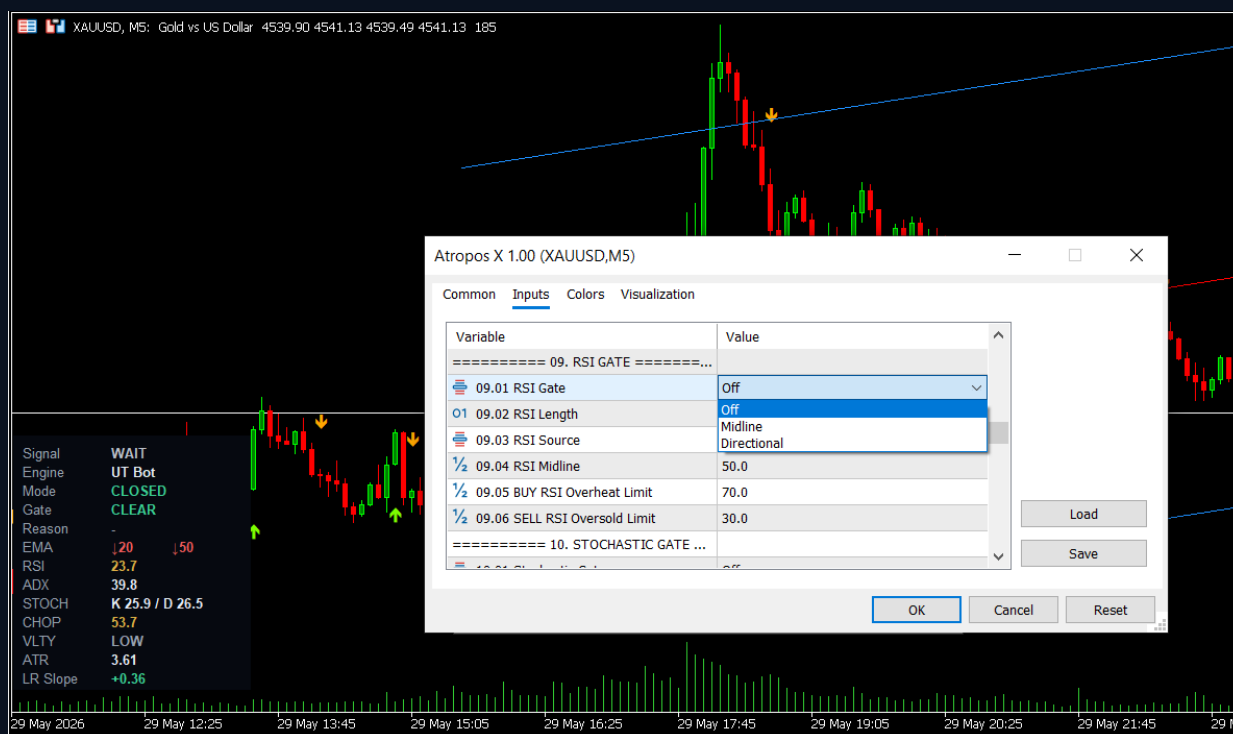
Apply RSI-based momentum or overextension filtering.

PRACTICAL NOTE

Midline mode uses RSI around 50 as a momentum bias. Directional mode can help avoid entries when RSI is already too stretched.

MAIN OPTIONS: Off, Midline, or Directional.

Input screenshot — Step 7





ATROPOS X

User Guide & Setup Manual

Step 8 — Stochastic Gate

WHAT IT DOES

Use stochastic behavior to confirm pullback or momentum conditions.

PRACTICAL NOTE

This can help add confirmation to entries, especially when the user wants a more selective signal process.

MAIN OPTIONS: Off or Midline Slope.

Input screenshot — Step 8





ATROPOS X

User Guide & Setup Manual

Step 9 — Choppy Market Filter

WHAT IT DOES

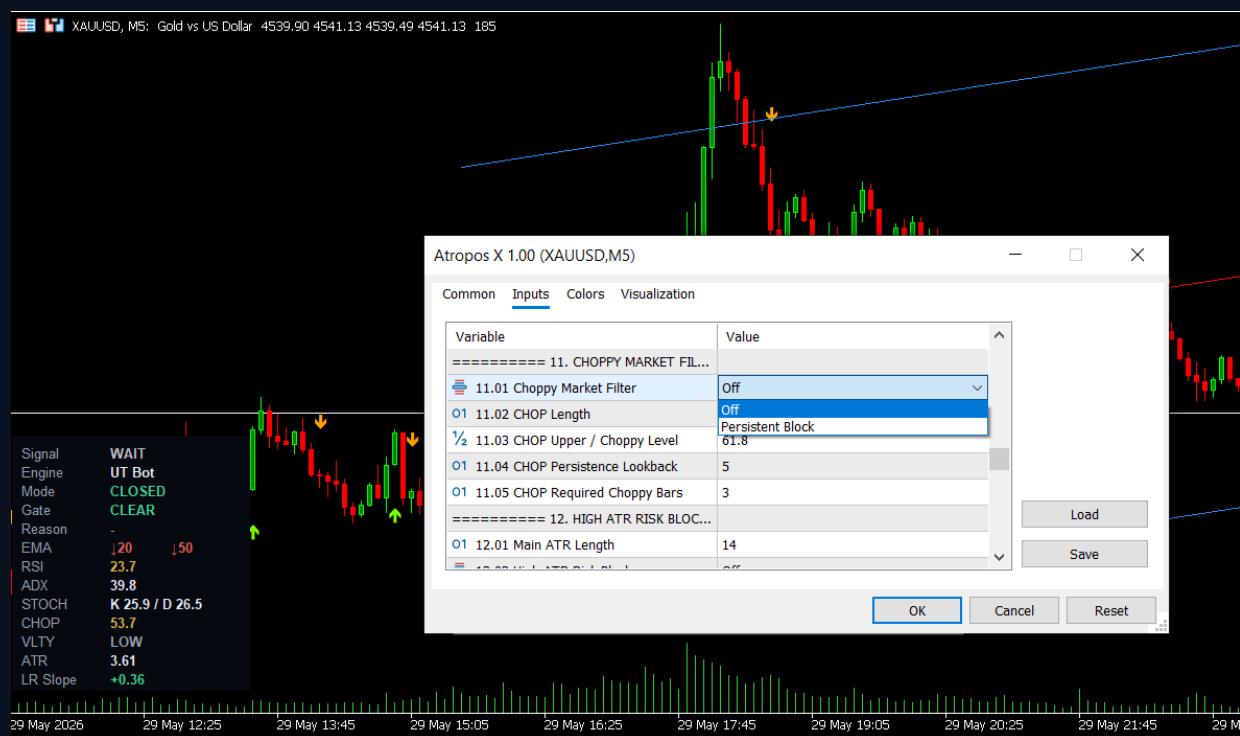
Reduce signals during sideways or noisy market conditions.

PRACTICAL NOTE

Useful for avoiding bad structure. Some symbols and timeframes benefit from choppiness filtering more than others.

MAIN OPTIONS: Off or Persistent Block.

Input screenshot — Step 9





ATROPOS X

User Guide & Setup Manual

Step 10 — High ATR Risk Block

WHAT IT DOES

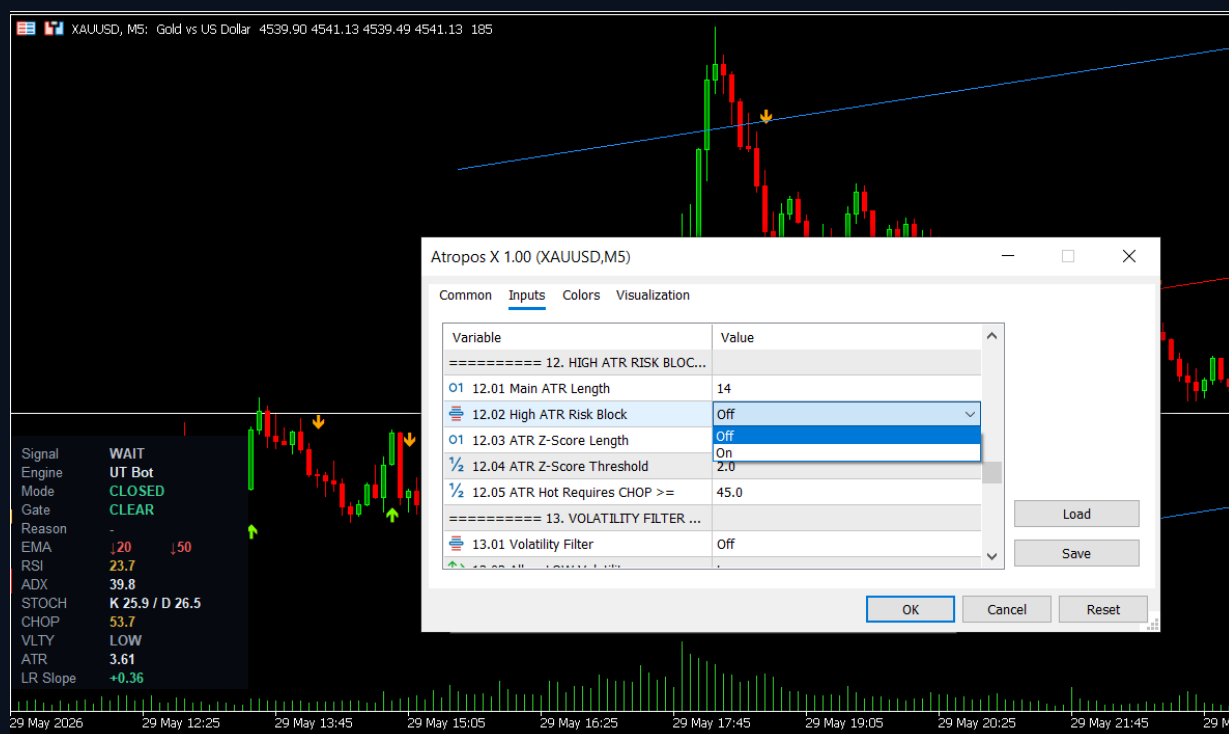
Block signals when ATR-based risk conditions become too aggressive.

PRACTICAL NOTE

This can help avoid unstable or overheated market movement. It is useful for risk control, but it may also reduce opportunities.

MAIN OPTIONS: Off or On.

Input screenshot — Step 10





ATROPOS X

User Guide & Setup Manual

Step 11 — Volatility Filter

WHAT IT DOES

Control signals based on the current volatility regime.

PRACTICAL NOTE

VLTY means volatility, not volume. Some instruments perform better in higher volatility, while others become noisy or risky.

MAIN OPTIONS: Off or On, with selectable regimes such as LOW, MID, HIGH, or EXTREME.

Input screenshot — Step 11





ATROPOS X

User Guide & Setup Manual

Step 12 — Time Control

WHAT IT DOES

Block signals during selected hours or trading windows.

PRACTICAL NOTE

Useful for avoiding low-liquidity periods, session transitions, or any trading hours you do not want to include.

MAIN OPTIONS: User-defined start/end control.

Input screenshot — Step 12





ATROPOS X

User Guide & Setup Manual

Step 13 — Visual Display

WHAT IT DOES

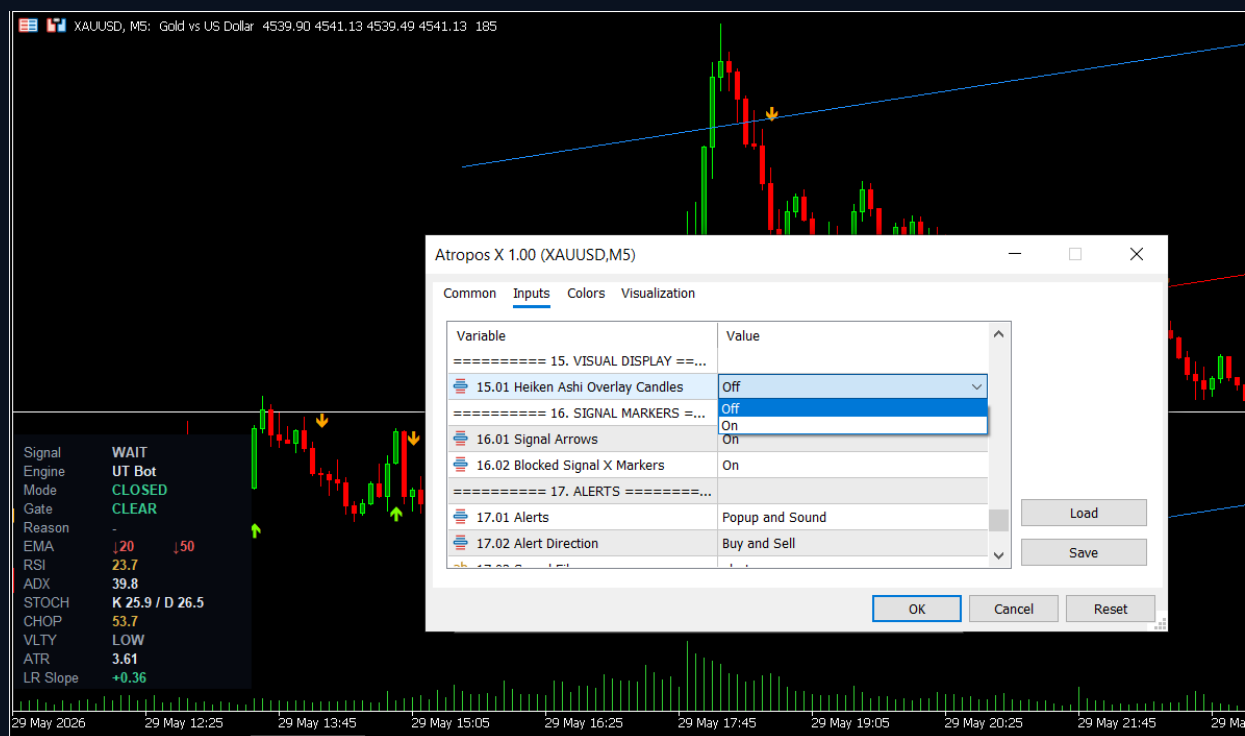
Control what the user sees on the chart.

PRACTICAL NOTE

Changing the visual candle style does not necessarily change the calculation source. Visual settings affect appearance; source settings affect the logic.

MAIN OPTIONS: Show/hide arrows, blocked markers, Linear Regression, panel visuals, and regular or Heiken Ashi candle display.

Input screenshot — Step 13





ATROPOS X

User Guide & Setup Manual

Step 14 — Alerts & State Panel

WHAT IT DOES

Control alerts and the live state panel behavior.

PRACTICAL NOTE

The state panel summarizes the signal, engine, gate status, reason, EMA, RSI, ADX, STOCH, CHOP, VLTY, ATR, and LR Slope in one place.

MAIN OPTIONS: Enable/disable alerts, show/hide the panel, and place the panel at the bottom-left or bottom-right.

Input screenshot — Step 14





ATROPOS X

User Guide & Setup Manual

State Panel Overview

SIGNAL

Current signal state such as BUY, SELL, or WAIT.

ENGINE

Shows whether the active engine is UT Bot or Range Filter.

GATE

Shows whether the signal is CLEAR or BLOCKED.

REASON

Tells you which filter blocked the signal.

EMA / RSI / ADX / STOCH / CHOP / VLTY / ATR / LR SLOPE

Live market readings displayed directly on the chart.



ATROPOS X

User Guide & Setup Manual

Practical Setup Examples

These are starting ideas, not fixed rules.

GOLD

Try starting with UT Bot and one trend or structure filter such as EMA or Choppiness.

INDICES

Try momentum confirmation such as MACD or RSI, then compare the difference visually.

CRYPTO

Watch volatility and ATR conditions carefully. Crypto can move aggressively, so risk-control filters may matter more.

FOREX

Try Range Filter with a simple confirmation layer and avoid overloading the setup with too many filters.



Best Practices

- Start with one engine and keep most filters OFF first.
- Add only one filter at a time so you can see what changed.
- Do not assume one setup fits every instrument or timeframe.
- Watch blocked markers and the Reason row to understand filter behavior.
- Use the state panel to read the market faster from one chart.
- Save different presets for different instruments if needed.
- Always use proper risk management and independent testing.

FINAL NOTE

Atropos X is a flexible decision-support tool. Its value comes from building a setup that matches your market, timeframe, and trading style.



ATROPOS X

User Guide & Setup Manual

Important Note

DISCLAIMER

Atropos X is an indicator and decision-support tool. It does not guarantee profits and it does not replace risk management. Every trader should test settings carefully on the symbols and timeframes they trade. Market conditions change, and no indicator should be used blindly.

Thank you for using Atropos X

Build your own signal environment. Read the market faster. Trade with more structure.