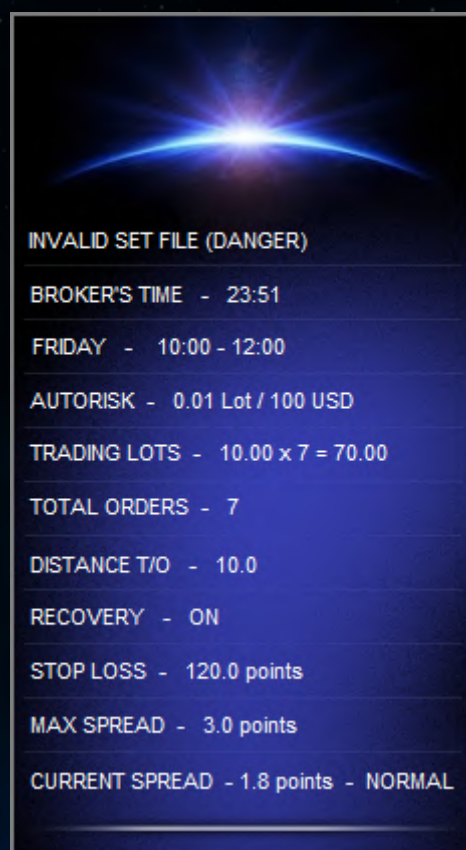


ANTARES EA - INFO PANEL (DESCRIPTION)

SET NAME - Checking the set file for each currency pair for correctness.

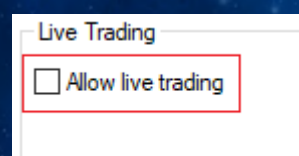
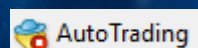
For example: if the chart of the GBPUSD currency pair is open and we mistakenly loaded the set file for EURCHF, then the word **"DANGER"** will appear on the robot panel. If the set file is installed correctly, then on the robot panel we will see the inscription **"OK"**.



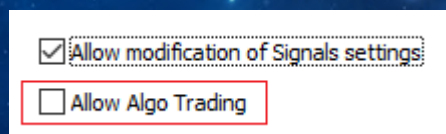
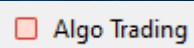
There is also a warning message **"TRADING IS DISABLED"**.

Appears if we forgot to click the auto trade button or did not check the box in the advisor settings in the allow trading line.

MT4



MT5



BROKER'S TIME - 23:51

BROKER'S TIME - Current time of your broker

FRIDAY - 10:00 - 12:00

FRIDAY - Information from the current day of the week MONDAY / TUESDAY / WEDNESDAY / THURSDAY / FRIDAY. If trading is disabled on any day, for example on Friday, then the panel will read FRIDAY - DISABLED

10 - 12 - indicates the time at which the signal search begins. For two hours, the robot scans the market, looks for patterns using indicators and filters, and if it finds suitable conditions, it concludes a deal.

AUTORISK - NOT ACTIVATED

AUTO RISK - shows information about the volume of transactions. There are several options for calculating a lot (by deposit and by stop loss as a percentage). We'll look at this in more detail below, in the "[ADVISOR SETTINGS](#)" section.

TRADING LOTS - $0.01 \times 7 = 0.07$

TRADING LOTS - shows information about the volume of transactions, the maximum number of orders, when using auto risk and without it. There are also several options for displaying information. We'll look at this in more detail below, in the "[ADVISOR SETTINGS](#)" section.

TOTAL ORDERS - 7

TOTAL ORDERS - shows the maximum allowed number of orders that can be opened in one signal cycle.

DISTANCE T/O - 10.0

DISTANCE TOTAL ORDERS - shows the distance in points for a series of orders. If the transaction goes in the opposite direction, then after the specified number of points, additional orders are opened, independent of the first transaction. The number of these orders is determined by the "**TOTAL ORDERS**" parameter. It is not a grid, since each order is maintained independently, with its own individual stop loss and trailing stop.

RECOVERY - ON

RECOVERY - recovery after loss (enabled/disabled)

STOP LOSS - 120.0 points

STOP LOSS - stop loss in points for each transaction

MAX SPREAD - 3.0 points

MAX SPREAD - the maximum allowable spread in points for opening a transaction

CURRENT SPREAD - 6.8 points - HIGH 🚩

CURRENT SPREAD - shows the current spread for the currency pair

ADVISER SETTINGS (DESCRIPTION)

×

Select expert...

View previous single test results

↓

Variable	Value	Start	Step	Stop	Steps
<input checked="" type="checkbox"/> _____					
<input checked="" type="checkbox"/> +++++ TECHNICAL SPECIFICATIONS +++++					
<input checked="" type="checkbox"/> Set name					
<input checked="" type="checkbox"/> Max spread	3.0	3.0	0.3	30.0	
<input checked="" type="checkbox"/> Stop Loss	120.0	120.0	12.0	1200.0	
<input checked="" type="checkbox"/> Take Profit	1000.0	1000.0	100.0	10000.0	
<input checked="" type="checkbox"/> Hedging	true	false		true	
<input checked="" type="checkbox"/> AllowLong	true	false		true	
<input checked="" type="checkbox"/> AllowShort	true	false		true	
<input checked="" type="checkbox"/> Graphic objects (profit/loss)	true	false		true	
<input checked="" type="checkbox"/> MagicNumber	1234321	1234321	1	12343210	
<input checked="" type="checkbox"/> Comments	Antares EA				
<input checked="" type="checkbox"/> _____					
<input checked="" type="checkbox"/> +++++ MONEY MANAGEMENT +++++					
<input checked="" type="checkbox"/> Lot size	0.01	0.01	0.001	0.1	
<input checked="" type="checkbox"/> MM_Depo	0	0	1	10	
<input checked="" type="checkbox"/> Auto Risk	0.0	0.0	0.0	0.0	
<input checked="" type="checkbox"/> Recovery (increase lot after loss)	true	false		true	
<input checked="" type="checkbox"/> _____					
<input checked="" type="checkbox"/> +++++ TOTAL ORDERS +++++					
<input checked="" type="checkbox"/> Total orders	0	0	1	10	
<input checked="" type="checkbox"/> Orders distance	0.0	0.0	0.0	0.0	
<input checked="" type="checkbox"/> _____					
<input checked="" type="checkbox"/> +++++ TRAILING STOP +++++					
<input checked="" type="checkbox"/> Trailing Start	0.0	0.0	0.0	0.0	
<input checked="" type="checkbox"/> Trailing Distance	0.0	0.0	0.0	0.0	
<input checked="" type="checkbox"/> Trailing Step	0.0	0.0	0.0	0.0	
<input checked="" type="checkbox"/> _____					
<input checked="" type="checkbox"/> +++++ TIME PARAMETERS +++++					
<input checked="" type="checkbox"/> GMT	2	2	1	20	
<input checked="" type="checkbox"/> DST	true	false		true	
<input checked="" type="checkbox"/> _____					
<input checked="" type="checkbox"/> +++++ INDICATORS AND FILTERS +++++					
<input checked="" type="checkbox"/> .					
<input checked="" type="checkbox"/> _Bollinger bands_					
<input checked="" type="checkbox"/> BB_Period	13	13	1	130	
<input checked="" type="checkbox"/> Entry_Break	1	1	1	10	
<input checked="" type="checkbox"/> BB_Shift	1	1	1	10	
<input checked="" type="checkbox"/> Min_Volatility	20	20	1	200	
<input checked="" type="checkbox"/> Max_Volatility	100	100	1	1000	
<input checked="" type="checkbox"/> .					
<input checked="" type="checkbox"/> _Commodity channel index_					
<input checked="" type="checkbox"/> CCI_Period_open	0	0	1	10	
<input checked="" type="checkbox"/> CCI upper and lower level	100	100	1	1000	
<input checked="" type="checkbox"/> .					
<input checked="" type="checkbox"/> _Filter max candles_					
<input checked="" type="checkbox"/> maxcandle	0.0	0.0	0.0	0.0	
<input checked="" type="checkbox"/> barcount	0	0	1	10	
<input checked="" type="checkbox"/> _____					
<input checked="" type="checkbox"/> +++++ TRADE BY DAYS OF THE WEEK +++++					
<input checked="" type="checkbox"/> Trade on Monday	true	false		true	
<input checked="" type="checkbox"/> Trade on Tuesday	true	false		true	
<input checked="" type="checkbox"/> Trade on Wednesday	true	false		true	
<input checked="" type="checkbox"/> Trade on Thursday	true	false		true	
<input checked="" type="checkbox"/> Trade on Friday	true	false		true	
<input checked="" type="checkbox"/> _____					

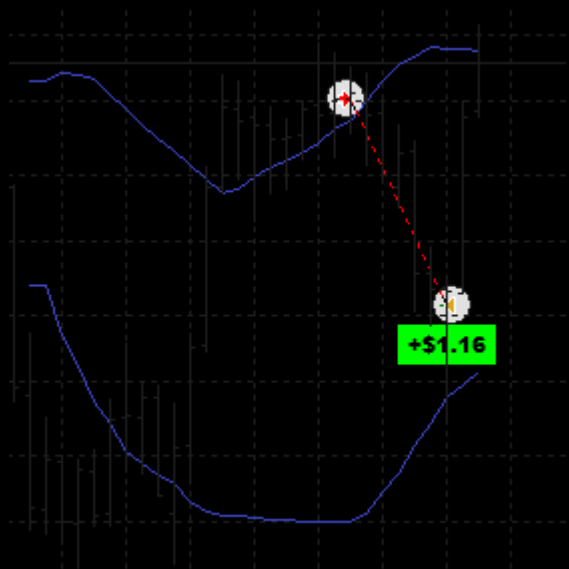
Strategy Tester

Overview | Settings | **Inputs** | Optimization Results | Agents | Journal

Start

+++++ TECHNICAL SPECIFICATIONS +++++

- SET NAME - SET NAME - checks the set file for each currency pair for correctness.
- MAX SPREAD - the maximum allowable spread for opening a transaction
- STOP LOSS - stop loss in points for each transaction
- TAKE PROFIT - take profit in points to take profit. The default value is 1000 points, since we use a trailing stop to take profits.
- HEDGING - enable or disable position hedging.
- ALLOLONG - allow the advisor to open buy orders.
- ALLOWSHORT - allow advisor to open sell orders.
- GRAPHICAL OBJECTS (profile/loss) - allow graphical display on the profit/loss chart



- MAGIC NUMBER - magic number of an open order
- COMMENT - comments on orders

+++++ MONEY MANAGEMENT +++++

LOT SIZE - fixed lot volume. If you want to use a fixed lot, then in the line MM DEPO and AUTO RISK, set the value to 0. Then your lot volume will always be the same, regardless of the growth or loss of the total deposit.

+++++ MONEY MANAGEMENT +++++	
Lot size	0.01
MM_Depo	0
Auto Risk	0.0

MM_DEPO - a completely new parameter for an alternative calculation of money management, such as the volume of lots specified in the LOTS parameter for the depot size MM_DEPO.

Example: LOTS = 0.01, MM_DEPO = 500 - means that 0.01 lot will be used for every 500 units of deposit currency. Well, let's look at another example: let's say we have an account with a deposit of \$5,000, and we want to use, for example, 0.01 lot for every \$1,000. In the LOTS line we will set the value to 0.01, and in the MM_DEPO line we will indicate 1000. Now the adviser will automatically calculate the lot at the rate of 0.01 lot for every \$1000 of deposit. On the panel in the AUTO RISK line you will see the following information:

AUTORISK - 0.01 Lot / 1000 USD

If we want to use an alternative calculation of MM_DEPO, then the AUTO RISK line should not have the value 0, otherwise MM_DEPO will not work. In the auto risk line, you need to put any value greater than 0, for example 1. Let's consider an example: let's say we want to use 0.1 lot for every \$5000 deposit, then the settings will be as follows:

+++++ MONEY MANAGEMENT +++++	
Lot size	0.1
MM_Depo	5000
Auto Risk	1.0

LOT SIZE is set to 0.1
We set MM_DEPO to 5000, because we decided to use 0.1 for every 5000 units of the base currency.
And set AUTO RISK to 1. If we leave the value at 0, the calculation will not work. One to activate the calculation.

AUTORISK - 0.10 Lot / 5000 USD

AUTO RISK - is another function for calculating a lot, but not by deposit, but by stop loss. Example: if we set this line to 1, this will mean that when the stop loss is reached, we will lose 1% of the funds from one transaction, from the total deposit.

It is worth paying attention to the fact that the advisor can open up to 7 transactions for each currency pair in one signal cycle. That is, 7 transactions can be opened in the market for each currency pair (a series of orders).

Therefore, when using **AUTO RISK**, you need to carefully calculate your risks.

How to calculate **AUTO RISK** for 7 transactions?

For example, we need not to lose more than 2% of the deposit, even if the entire series of 7 orders triggers the stop loss.

We calculate: divide 2 percent by 7 orders and get 0.28%.

Let's set the value 0.28 in the **AUTO RISK** line, and now even with the worst outcome of events, that is, if the entire series is closed by stop loss, we will not lose more than 2%. On the info panel you will see the following:

AUTORISK - 0.3% * 7 = 2.0%

If we want to use just such a calculation (**AUTO RISK by stop loss**), then in the settings we need to set the following:

LOTS - set the value to 0

MM_DEPO - set the value to 0

AUTO RISK - set the desired value, for example 0.5% per trade. We get this picture:

AUTORISK - 0.5% * 7 = 3.5%

ab	+++++ MONEY MANAGEMENT +++++	
1/2	Lot size	0.0
01	MM_Depo	0
1/2	Auto Risk	0.5

I think that now everything should be clear to you. Let's briefly repeat it again:

If you want to use a fixed lot, then the settings are as follows:

LOTS = set the desired lot volume, for example 0.1

MM_DEPO = 0

AUTO RISK = 0

If you want to use an alternative lot calculation by deposit, then the settings are as follows:

LOTS = enter the desired lot volume for **MM_DEPO**

MM_DEPO = enter the desired deposit value for **LOTS**

AUTO RISK = 1 (digit 1 to activate the calculation of **MM_DEPO**), with a value of 0 it will not work!

If you want to use auto risk by stop loss in % for each trade, then the settings will be as follows:

LOTS = 0

MM_DEPO = 0

AUTO RISK = enter the desired value.

We are done with money management here. If you don't understand something, then re-read the information slowly, several times.

Information about lot volumes for the entire series of transactions has also been added to the advisor. It will be calculated regardless of whether you use a **FIXED LOT**, **MM_DEPO**, or **AUTO RISK**. The information panel will show the lot for each trade, and multiply it by the series of orders. You will see the total volume for the series of orders.

AUTORISK - 0.5% * 7 = 3.5%

TRADING LOTS - 0.35 x 7 = 2.45

RECOVERY - (increasing the lot after a loss) - The loss recovery function works as follows: If there was a losing trade, the next trade will be opened with a double lot.

The advisor will continue to work with a double lot until the deposit is fully restored. After recovery deposit lot becomes the same. The lot increase occurs only once without subsequent generations.

Example:

1. The first trade with a lot of 0.1 was closed with a stop loss.
2. The recovery function is triggered and the second deal is opened with a double lot, that is, a lot of 0.2.
3. If the losses from the first transaction were not restored using the second transaction, then the third transaction will also be opened with a lot of 0.2.

And the fourth, and fifth, and sixth transactions will also be opened with a lot of 0.2, until the losses from first deal. After the deposit is restored, the lot will automatically return to the previous 0.1. It is not a martingale system, since the knee increases only once! When calculating risks, be sure to take into account that the advisor has a recovery function, which requires free margin!

+++++ TOTAL ORDERS +++++

TOTAL ORDERS - The maximum number of orders that are allowed to open simultaneously in one direction (1-10). If the parameter is greater than one, an additional order will be opened every OrdersDistance points.

ORDER DISTANCE - Distance between orders

+++++ TRAILING STOP +++++

TRAILING START - Distance at which Trailing Stop is activated

TRAILING DISTANCE - Trailing stop size

TRAILING STEP - Trailing Stop change step

+++++ TIME PARAMETERS +++++

GMT - gmt offset. For brokers that use daylight savings time, the GMT Offset is set to the broker's standard (winter) time. And the DST setting in summer time will automatically shift the time by one hour.

DST - Enabled - if the broker uses Daylight Savings Time.

Disabled - if the broker does not use daylight saving time.

Remember! We set GMT according to your broker's winter time.

And if it switches to daylight saving time then DST = true.

If your broker has the same GMT all year round, both in winter and summer, then the DST parameter = false, and the GMT value is set according to the shift of your broker.

+++++ INDICATORS AND FILTERS +++++

Bollinger bands

BB_Period - period of Bollinger bands

Entry_Break - the distance in points from the channel border, which the price must cross to open a trade.

Positive values - after crossing the channel boundary, negative values - before crossing the channel boundary.

BB_Shift - Bollinger bands indicator shift

Min_Volatility - minimum channel width

Max_Volatility - maximum channel width

Commodity channel index

CCI: TimeFrame - timeframe for CCI

CCI_Period_open - CCI indicator period (when cci Period open =0 – off)

CCI upper and lower level - the upper and lower levels of the CCI indicator, above which it is allowed to open trades

Filter max candles

maxcandle - the maximum range of price movement for the previous barcount of bars, above which it is allowed to open deals in the direction of price movement

barcount - number of bars for the range of price movement

+++++ TRADE BY DAYS OF THE WEEK +++++

Trade on Monday - Allow trading on that day (true - yes / false - no)

Trade on Tuesday - Allow trading on that day (true - yes / false - no)

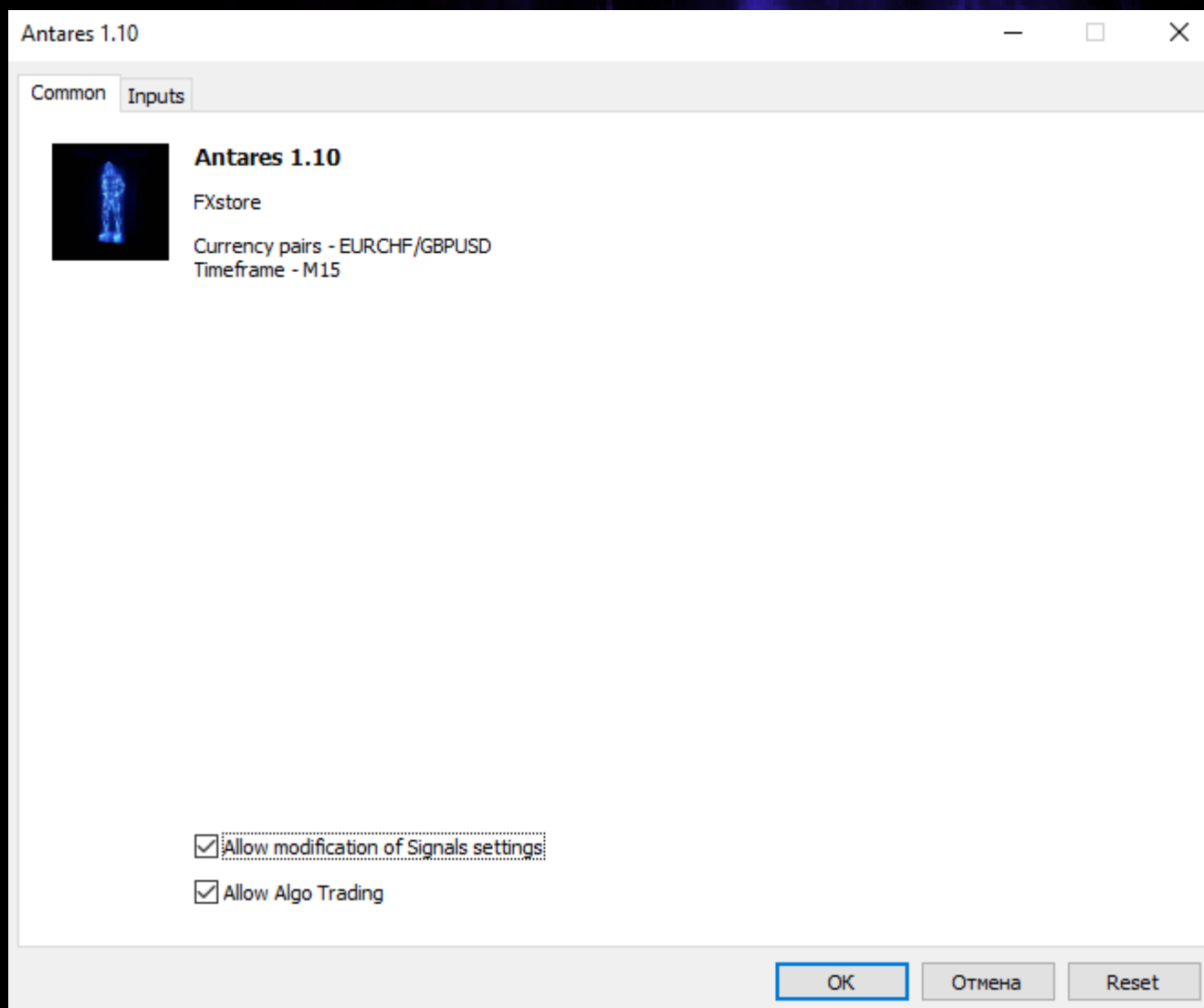
Trade on Wednesday - Allow trading on that day (true - yes / false - no)

Trade on Thursday - Allow trading on that day (true - yes / false - no)

Trade on Friday - Allow trading on that day (true - yes / false - no)

INSTALLING AND CONFIGURING THE ADVISOR

MT5



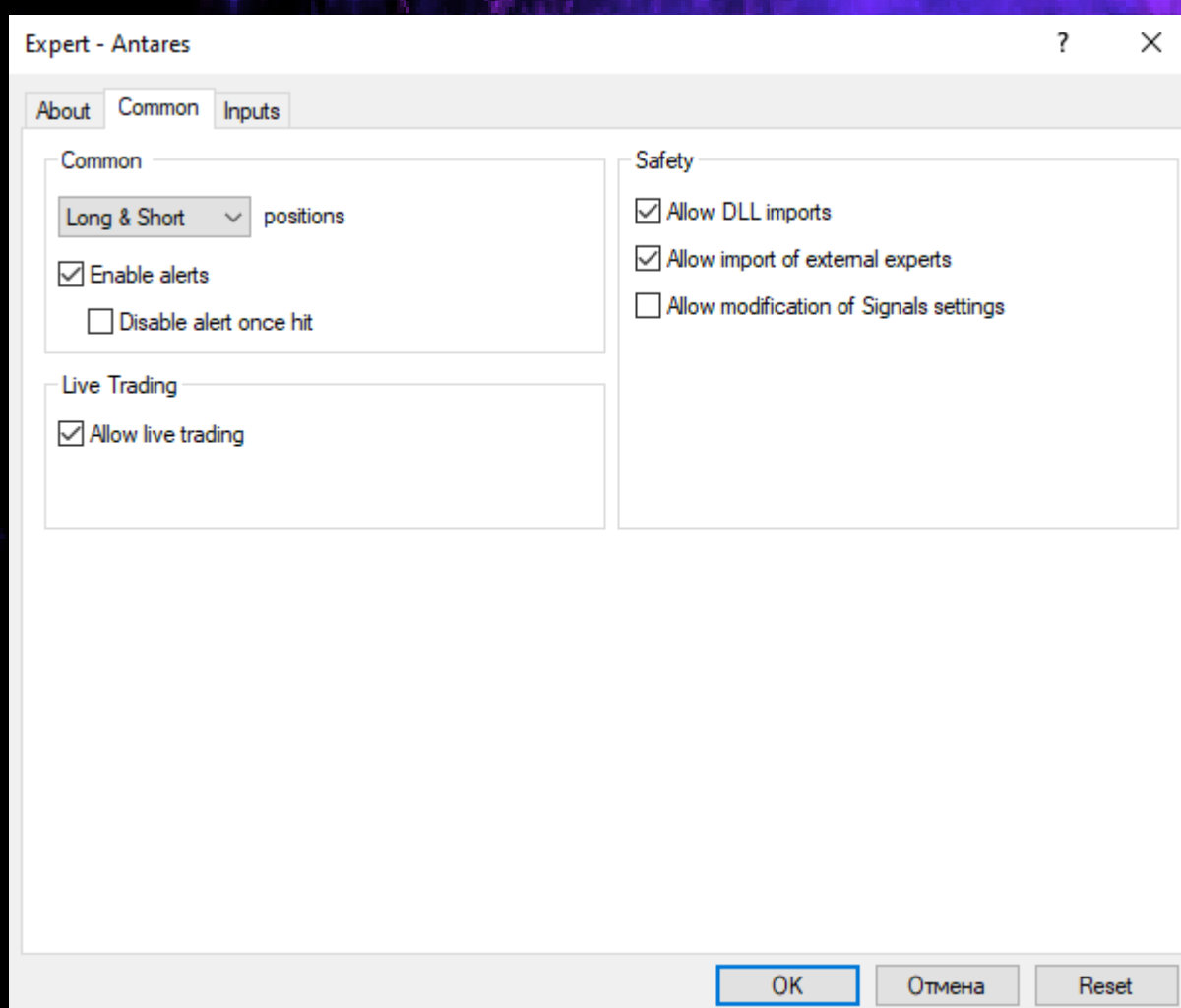
1. Determine the GMT of your broker and download the set files on the page with the advertisement. If you don't know what GMT your broker has, then you need to write to the broker's online support and ask: (what GMT time shift do they use in summer and winter). If, for example, a broker has GMT +2 in winter and +3 in summer (this is the majority of brokers), then the advisor settings will have the following:

GMT = 2 (enter the value of the broker's winter time shift!)

DST = true (after all, the broker uses daylight saving time)

We set GMT +2 (winter time), even if it's summer now and the broker's GMT = +3. Since the DST parameter will automatically shift daylight saving time by one hour. In simple words: if you have correctly set the broker's GMT shift according to winter time, and DST = true, then these settings will not need to be adjusted anymore.

MT4



And if your broker does not use daylight saving time, and he has the same GMT all year round, then you need to set:

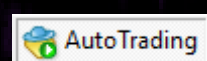
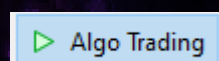
DST = false

GMT = enter your broker's offset value.

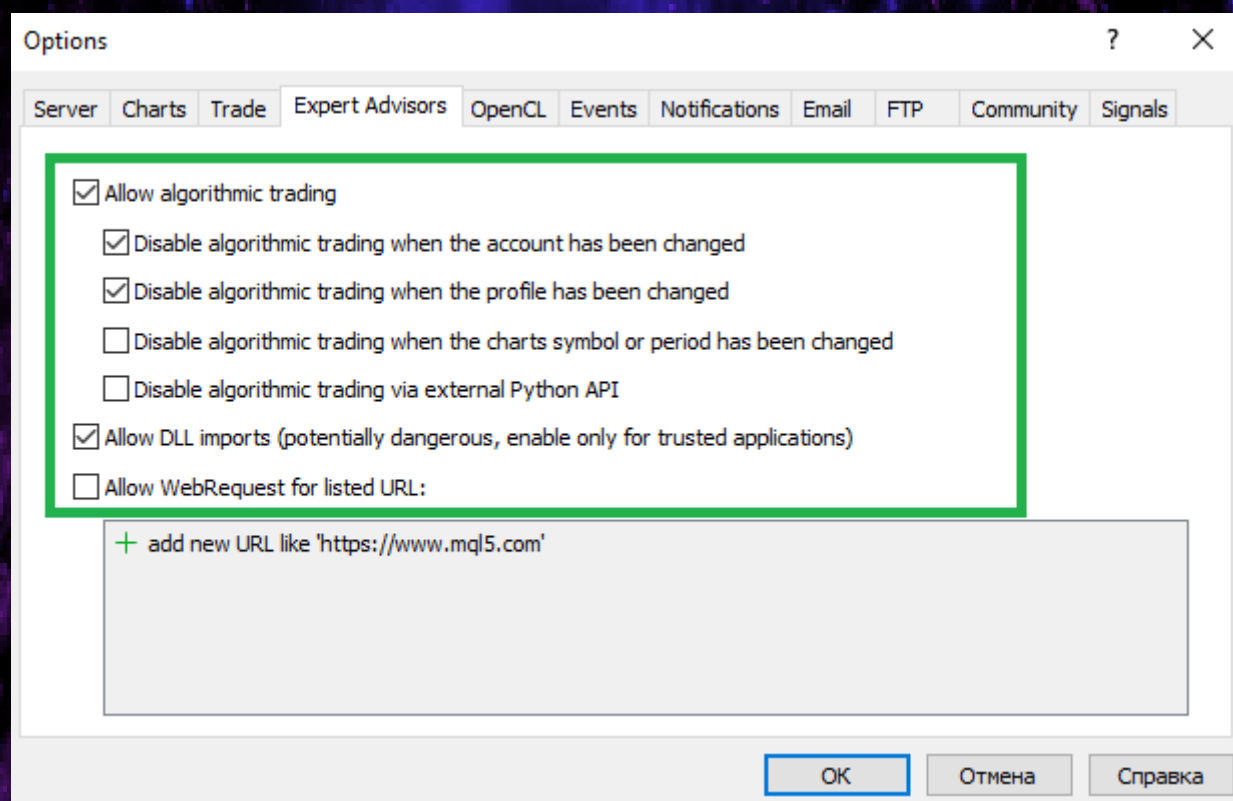
2. Open EURCHF and GBPUSD charts in the terminal with the M15 timeframe

3. Attach the advisor to the charts and check the boxes as in the photo

4. Check the boxes as in the photo above. Next, click on the automatic trading button. It should be green



Tools - options - expert advisor



This completes the installation of the advisor. The advisor's emoticon in the upper right corner of the chart should be smiling.



RECOMMENDED DEPOSIT

The advisor works with a series of orders and can open up to 7 transactions for each currency pair in one signal cycle. Don't forget that the advisor uses the function of recovery after a loss. For all this you need a free margin, and therefore you do not need to violate the recommended trading risks!

Low risk - \$500 for every 0.01 lot

Average risk - \$400 for every 0.01 lot

High risk - \$300 for every 0.01 lot

Don't forget that we are not playing in a casino! Control your risks! I wish everyone good luck!