

# UTrailingMin – universal trailing stop

Version 1, September, 2022

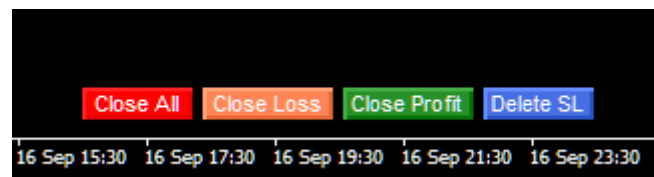
**UTrailingMin** is a universal trailing stop, an EA for manual trading without an order opening mechanism. This is a shortened version of the [UTrailing](#) EA.

## Opportunities

- 5 trailing stop modes: virtual, normal, total, percentage and mobile stop loss;
- 7 options: by points, by bar extremes, by fractals, by volumes, and by indicators;
- virtual mobile stop loss - move manually;
- virtual mobile take profit - move manually;
- adding stop loss and take profit to all open positions;
- setting up a trailing stop for of open positions: by magic number and by direction;
- closing orders by drawdown percentage;
- closing orders under a fixed profit plan;
- closing all positions on Equity;
- "hot buttons" on the chart for quick execution of commands;
- working with cryptocurrencies (#Bitcoin, etc.), stocks, futures, etc.;
- operates on 4- and 5-digit accounts.

## Hot buttons

Hot buttons are designed for quick execution of one command.



**Close All** - closes all open positions on the current chart.

**Close Loss** - closes, on the current chart, only positions that have a loss.

**Close Profit** - closes, on the current chart, only positions that have a profit.

**Delete SL** - deletes, on the current chart, stop loss and take profit in all open positions.

## Block 1. GENERAL SETTINGS

Variable	Value
ab ____ 1. GENERAL SETTINGS ____	
123 Magic number (-1 for all)	-1
123 Positions: >	Long & Short
123 Add SL and TP	true
123 TP SL Mode: >	Virtual
123 Stop Loss in points	30
123 Take Profit in points	50
123 Breakeven	false
123 Profit to enable a breakeven	12
123 Breakeven level	2
123 Slippage	3

Load  
Save

**Magic number (-1 for all)** = -1 - allows you to specify the EA, which orders (with which magic number) it needs to track. The magic number will be displayed on the chart for your convenience and appear in the right corner of the terminal's screen to the left of the EA.

The magic number -1 (the message "-1" will be displayed on the chart) means that the EA will work with all orders for this currency pair, including orders opened manually.

#### Positions:

- **Long only** - to trail the stop loss only for buy orders;
- **Short only** - to trail the stop loss only for sell orders;
- **Long & Short** - trailing stop in both directions.

All symbols	false
Positions: >	Long & Short
Add SL and TP for all open orders	Long only
Stop Loss by: >	Short only
Stop Loss in points	Long & Short
	30.0

**Add SL and TP** = true - the EA will set a stop loss or take profit for all open orders.

**TP SL Mode:** - select the mode for setting stop loss and take profit

- **Normal** – is the normal installation method.
- **Virtual** – setting virtual stop loss and take profit lines.

Positions: >	Long & Short
Add SL and TP	true
TPSL Mode: >	Virtual
Stop Loss in points	Normal
Take Profit in points	Virtual
	50

**Stop Loss in points** = 30 - the stop loss size in the points

**Take Profit in points** = 50 - the take profit in the points.

**Important:** virtual stops can be used together with real stops. To guarantee in case of loss of communication with the broker or sudden computer shutdown.

**Breakeven** = false - allow breakeven.

**Profit to enable a breakeven** = 12 – level of take-profit in points, at which a breakeven is enabled

**Breakeven level** = 2 – sets the level, at which a stop loss must be moved: if set to 1, then the position will be closed, when the profit is 1 point if set to 0, then the position will be closed with the profit of 0 points.

**Slippage** = 3 - the level of slippage in points on the volatile market it is better to increase.

## Block 2. CLOSING POSITIONS

__2. CLOSING POSITIONS__	
Close by Equity	false
Amount of Equity in the deposit currency	1500.0
Fixed profit	false
Profit in the deposit currency	30.0
Close all at drawdown in %	100.0

**Close by Equity** = false - if true, allow closing all open positions and deleting all pending orders when the account Equity reach the set value.

**Amount of Equity, in the currency of the deposit** = 0.0 - the amount of Equity at which all orders will be closed, the value can be higher than the account Balance.

**Fixed profit** = false - allow fixed profit.

**Profit in the deposit currency** = 50.0 - fixed profit amount in the currency of the deposit.

**Close all at drawdown in %** = 100, if Equity becomes less than the Balance by the set percentage, all orders will be closed.

### Block 3. TRAILING OPEN POSITION

Variable	Value
ab __3. TRAILING OPEN POSITION__	
123 Mode trailing stop: >	Normal
123 Timeframe for trailing stop: >	1 Hour
123 Trailing stop by: >	Points
123 Trailing stop level	20
123 Trailing step	2
123 Indent in points, except by "Points"	1
123 ATR period	14
123 Level of Volumes	100
123 Moving Average period	34
123 MA shift	0
123 MA method: >	Exponential
123 Applied price the MA: >	Close price
1/2 Step Parabolic SAR	0.02
1/2 Maximum Parabolic SAR	0.2

Buttons: Load, Save, OK, Отмена, Reset

#### Mode trailing stop:

- **Normal** - standard trailing stop, starts trail only when there is profit.
- **Total** - by one (average) stop loss closes all open orders in one direction, including
- **Virtual** - trailing stop invisible to the broker, a horizontal dotted line, blue in color, will appear on the chart.
- **Mobile stop loss** - stop loss follows the price like a trailing stop immediately after the order is opened.
- **Disabled** - trailing stop is disabled and does not work.

ab __3. TRAILING OPEN POSITION__	
123 Mode trailing stop: >	Normal
123 Timeframe for trailing stop: >	Normal
123 Trailing stop by: >	Total
123 Trailing stop level	Virtual
123 Trailing step	Mobile stop loss
	Disabled
	2

**Timeframe for trailing stop:** = «1 Hour» - choice of the timeframe by which you want to work with trailing stop (except for Points).

Mode trailing stop: >	Normal
Timeframe for trailing stop: >	1 Hour
Trailing stop by: >	current
Trailing stop level	1 Minute
Trailing step	5 Minutes
Trailing step	15 Minutes
Trailing step	30 Minutes
Indent in points, except by "Points"	1 Hour
ATR period	4 Hours
Level of Volumes	1 Day
Level of Volumes	1 Week
Level of Volumes	1 Month

#### Trailing stop by:

- **Points** - standard trailing stop by points;
- **High/Low** - the High/Low of the previous bar;
- **Fractals** - by fractals;
- **Volumes** - by volumes;
- **Moving Average** - by moving average;
- **Parabolic SAR** - by Parabolic SAR;
- **ATR** - by ATR.

Timeframe for trailing stop: >	1 Hour
Trailing stop by: >	Points
Trailing stop level	Points
Trailing step	High/Low
Trailing step	Fractals
Trailing step	Volumes
Trailing step	Moving Average
Trailing step	Parabolic SAR
Trailing step	ATR
ATR period	34
Level of Volumes	34
Moving Average period	34

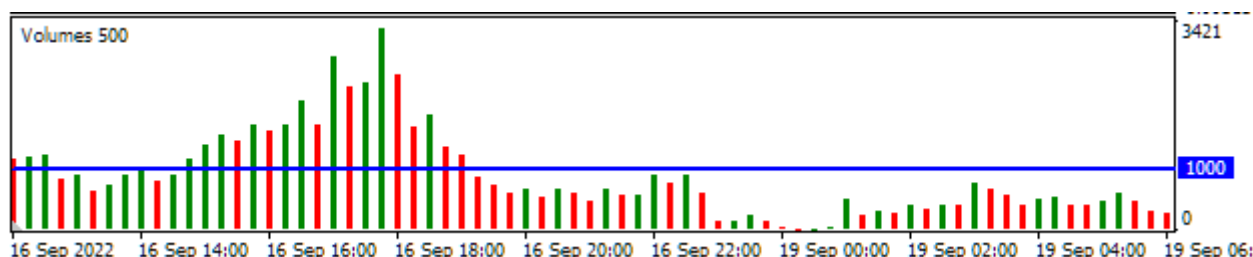
**Trailing stop level** = 20 - trailing stop level in points.

**Trailing step** = 2 - step of trailing: if the profit is 30 points, trailing will move a stop-loss to 2 points.

**Indent in points, except "by Points"** - the distance in points from the stop loss to the maximum or the minimum of the bar or the fractal.

**ATR period** = 14 - period ATR (Average True Range).ATR, you can adjust the trailing stop distance from the price using "Indent in points, except by Points" by increasing or decreasing its value. If Buy order, then the amount "Indent ..." + the ATR level is deducted from the Bid price. If Sell order, then the amount "Indent ..." + the ATR level is added to the Ask price.

**Level of Volumes** = 100 - sets the level volumes. Trailing stop is work if columns of a volume histogram are lower than a pre-set level – 100, if the columns are higher than the level, then trailing will be temporarily disabled, until the columns are lower than the pre-set level, for 5-digit brokers automatically increases to 10.



**Moving Average period** = 34

**MA shift** = 0.

**MA method:** = Exponential.

123	MA shift	0
123	MA method: >	Exponential
123	Applied price the MA: >	Simple
1/2	Step Parabolic SAR	Exponential
1/2	Maximum Parabolic SAR	Smoothed
		Linear weighted

**Applied price the MA:** - choosing price to calculate the moving average.

123	MA method: >	Exponential
123	Applied price the MA: >	Close price
1/2	Step Parabolic SAR	Close price
1/2	Maximum Parabolic SAR	Open price
		High price
ab	...	Low price
ab	4. OTHER SETTINGS	Median price
		Typical price
	Alerts modified stop loss	Weighted price

**Step Parabolic SAR** = 0.02.

**Maximum Parabolic SAR** = 0.2.

## Block 4. OTHER SETTINGS

ab	4. OTHER SETTINGS	
	Alerts modified stop loss	true
123	Background: >	Dark
	Show info messages	true
123	Font size in messages: >	Medium
	Show hot buttons	true
123	Multiply parameters by: >	Disabled
	For Tester! One order	true

Load

Save

**Alerts modified stop loss** = true - stop loss modification sound signal if false, the sound is disabled.

**Background:** = Dark - selects the color background of the chart Dark or Light.

	Alerts modified stop loss	true
123	Background: >	Dark
	Show info messages	Light
123	Font size in messages: >	Dark
		medium

**Show info messages** = true - displays textual information about the financial status of the account and currently active commands on the chart, if false, it does not show messages.

**Font size in messages:** = Small - you can choose the font size small, medium, big.

Show info messages	true
Font size in messages: >	Medium
Show hot buttons	Small
Multiply parameters by: >	Medium
For Tester! One order	Big
	true

Load
Save

**Show hot buttons** = true - yes, show, false - no.

**Important:** do not show, "hot buttons" in the strategy tester do not work!

**Multiply parameters by:** = Disabled - disabled, select and set the desired multiplier.

Show hot buttons	true
Multiply parameters by: >	Disabled
For Tester! One order	x10
	x100
	x1000
	x10000
	x100000

Load
Save
Отмена
Reset

The multiplier for cryptocurrencies or how much you need to increase all the parameters in the EA to make it work on this instrument correctly, you can find out from the specification of the instrument.

**For example:** in InstaForex for an account with a 4-digit quote, the spread and stop level for **#Bitcoin** is 12000 points. Therefore, you need to choose the multiplier "x1000", then the stop loss of 30 points will be set at a distance of 300000 points from the price (30 x 1000). For **#Ethereum** spread of 200 points means you need to choose the multiplier "x100" and then stop loss will be 3000 points (30x100). For **#Ripple** spread 50 points - you need to select "x10" and stop loss will be 300 points (30x10).

[www.taranus.ru](http://www.taranus.ru)

2022