

Description

Rooster – is a handy tool that allows you to receive alerts from your favorite indicators:

- Supports up to 5 indicators, built-in and custom;
- Supports up to 4 different signals at the same time;
- Able to show pop-up alerts, send e-mail and push notifications.

Input Settings

CONDITIONS SECTION:

Condition1/2/3/4 – specifically formatted string containing conditions for signal:

1. Detection is case insensitive, so you can use either upper or lower case letters;
2. Delimiter is space symbol;
3. Simple condition – **Expression Relator Expression**,
condensed version – **Expression is equal to Expression = True**;
4. Mixed condition – **Expression Relator Expression AND Expression Relator Expression AND ...**;
Expression can be a simple **Value** as well as an arithmetic operation between **Values**, permissible to use operations **+ - * /** and parentheses **()** (see [Example 1](#));
5. Indicator and OHLCV **Values**, could be followed with “index” – a positive number in square brackets **[..]**, that means bar shift to the past (see [Example 2](#)).

Possible Values:

IndicatorA# или IndA# IndicatorB# или IndB# IndicatorC# или IndC# IndicatorD# или IndD# IndicatorE# или IndE#	Indicator value, where # - indicator line index (see below), [..] allowed
Ask	Ask price
Bid	Bid price
Close или C CloseA или CA ...	Close price of the bar on the current or the other timeframe, [..] allowed
Open или O OpenA или OA ...	Open price of the bar on the current or the other timeframe, [..] allowed
High или H HighA или HA ...	High price of the bar on the current or the other timeframe, [..] allowed
Low или L LowA или LA ...	Low price of the bar on the current or the other timeframe, [..] allowed
Volume или V VolumeA или VA ...	Tick volume of the bar on the current or the other timeframe, [..] allowed
Any number	User-defined level equal to that number

Arrow	for arrow-type indicators, should be placed on the right side of expression and used together with Relator = (see Example 3)
Point or P	point – the min. step of price change
True	true (1)
False	false (0)

Possible Relators:

>	Greater
>=	Greater or equal
<	Less
<=	Less or equal
=	Equal
!= or <>	Not equal
crossup	Value on the left side is currently greater than Value at the right side of Relator, whereas it was less at the previous bar
crossdn	Value on the left side is currently less than Value at the right side of Relator, whereas it was greater at the previous bar
cross	crossup or crossdn regardless of direction

Line index is a non-negative integer value, the number of indicator line, where to get values from.

For built-in indicators with one line, index = 0.

For built-in indicators with more than one line, see [Appendix A](#).

For custom indicators, index can be obtained by using “colors” tab of indicator properties, indexation starts from 0.

Text description – input here a text representation of the signal.

Arrow type – choose from several predefined symbols for arrows being showed on the chart.

Arrow position – choose from several predefined positions for arrows being showed on the chart.

INDICATORS SECTION:

IndicatorA/B/C/D/E – select your indicator from the drop-down box.

Path and parameters – input here filename of the indicator with path and/or list of parameters.

1. Delimiter is comma, don't use spaces as delimiter;
2. Filename is required for **Custom Indicator** case selected in the box, it must contain path from **\MQL5\Indicators** directory and the filename itself;
3. You can't skip parameters in sequence, but you can define them in quantity less than required – last parameters will get default values. Follow the type and order of parameters, this will allow to load an indicator correctly. Integer and double type parameters must begin with 0-9 (number) or - (minus) symbol, double type in addition must contain . (dot), the rest is considered as string type. You can use standard MQL enumerations instead of integer numbers, see [Appendix B](#). Parameters put in quotation marks are forcibly considered as string type. If this setting is empty (or contains only filename for **Custom Indicator** case), indicator is loaded with default parameters;
4. You can't define manually more than 5 first parameters for **Custom Indicator** in MT4 version. Use method described in [Automatization 3](#). to bypass this limitation.

TimeFrame – indicator’s timeframe, may not be lower than the current timeframe. Also this setting can be used for getting value of **OHLCV** timeseries from other timeframes. Data is retrieved from the bar at the other timeframe which is time-synchronized with the current bar. When used together with the “index” [...], first it makes time synchronization, then shift by the “index”. Example: **CloseA[5]** – take time of the current bar, find on TimeFrameA the bar with the same time or nearest, then shift by 5 bars to the past.

Chart window* – indicator showing option.

show in main	Add indicator to the main window along with the price
show in new	Add indicator to the new sub-window below existing
don't show	Don't show indicator

* - not available for MT4 version.

Round indicator values – precision for normalization of indicator values.

ALERTS SECTION:

Pop-up window – show alert message in pop-up window.

E-mail – send alert message to your mailbox, “Email” section in the terminal settings must be filled out correctly, refer to the Metatrader Help for more information.

Push-notification – send alert message to your mobile application, “Notifications” section in the terminal settings must be filled out correctly, refer to the MetaTrader Help for more information.

ADVANCED SECTION:

Bars to calculate – number of bars to process.

Bar shift for alert – bar shift, the most common values are: 0 – give alert immediately, without waiting for the close of the current bar, 1 – give alert after the confirmation by the close. Rarely, working with indicators peeking into the future, you’ll need to define values greater than one (see [Example 3](#)).

Auto rescale for 5-digit – to increase automatically point size on 5-digit accounts, affects to the value **Point**.

Examples

EXAMPLE1: SIMPLE COMBINATION OF INDICATORS:

Objective:

Indicators – EMAfast(40), EMAslow(80), Stochastic (13,5,8);

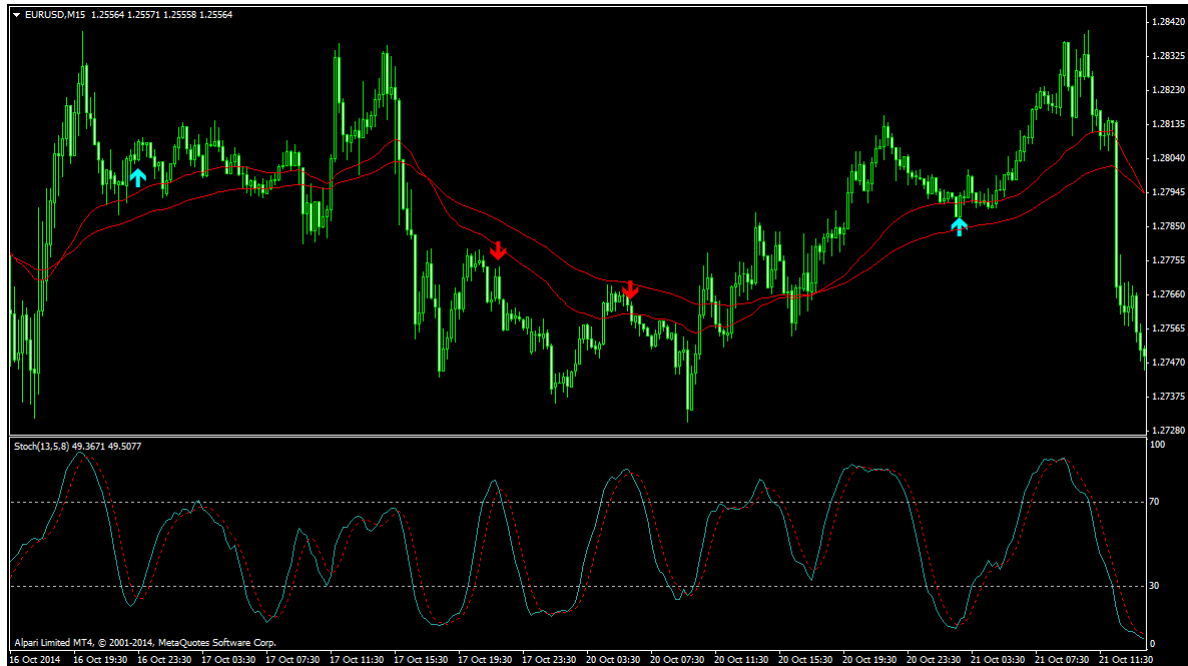
Buy signal – stochastic main line crosses signal line upward in the area below 30, while EMAfast is above of EMAslow by no less than 5 points.

Sell signal – stochastic main line crosses signal line downward in the area above 70, while EMAfast is below of EMAslow by no less than 5 points.

Settings:

Переменная	Значение
~~~~~CONDITIONS~~~~~	
Condition1	inda0-indb0 >= 50*p and indc0 crossup indc1 and indc0 < 30
Text description	signal buy1
Arrow type	arrow2 up
Arrow position	below price
Condition2	inda0-indb0 <= -50*p and indc0 crossdn indc1 and indc0 > 70
Text description	signal sell1
Arrow type	arrow2 down
Arrow position	above price
Condition3	
Text description	signal buy2
Arrow type	arrow3 up
Arrow position	below price
Condition4	
Text description	signal sell2
Arrow type	arrow3 down
Arrow position	above price
~~~~~INDICATORS~~~~~	
IndicatorA	Moving Average
Path and parameters	40.0,MODE_EMA
IndicatorB	Moving Average
Path and parameters	80.0,MODE_EMA
IndicatorC	Stochastic Oscillator
Path and parameters	13.5,8
IndicatorD	Custom Indicator
Path and parameters	
~~~~~ALERTS~~~~~	
Pop-up window	true
E-mail	true
Push-notification	true
~~~~~ADVANCED~~~~~	
Bars to calculate	100000
Bar shift for alert	1
Round indicator values	digits

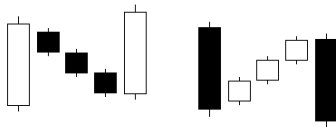
Result:



EXAMPLE2: USING OF BAR INDEXES:

Objective:

A variation of well known candlestick pattern “three methods”.



Bullish pattern:

1. a white candlestick:
 $c[4] > o[4]$
2. three black candlesticks which are within the first candlestick range:
 $c[3] < o[3]$ and $l[3] > l[4]$ and $h[3] < h[4]$
 $c[2] < o[2]$ and $l[2] > l[4]$ and $h[2] < h[4]$
 $c[1] < o[1]$ and $l[1] > l[4]$ and $h[1] < h[4]$
3. a white candlestick with a close above the first candlestick:
 $c > o$ and $c > c[4]$

Bearish pattern is opposite.

Settings:

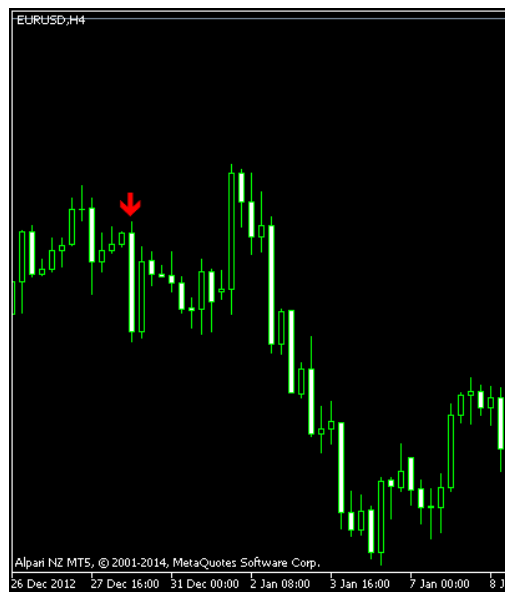
FXMTS_rooster 1.00

Common Inputs Colors Visualization

Variable	Value
<<<==== SECTION =====>>>>	<<<==== INDICATORS =====>>>>
IndicatorA	Custom indicator
Path and parameters	
Chart window	show in new
IndicatorB	Custom indicator
Path and parameters	
Chart window	show in new
IndicatorC	Custom indicator
Path and parameters	
Chart window	show in new
<<<==== SECTION =====>>>>	<<<==== CONDITIONS =====>>>>
Condition1	$c > o$ and $c > c[4]$ and $c[1] < o[1]$ and $l[1] > l[4]$ and $h[1] < h[4]$ and $c[2] < o[2]$ and $l[2] > l[4]$ and $h[2] < h[4]$ and $c[3] < o[3]$ and $l[3] > l[4]$ and $h[3] < h[4]$ and $c[4] > o[4]$
Text description	signal buy1
Arrow type	arrow2 up
Arrow position	below price
Arrow color	Aqua
Condition2	$c < o$ and $c < c[4]$ and $c[1] > o[1]$ and $l[1] > l[4]$ and $h[1] < h[4]$ and $c[2] > o[2]$ and $l[2] > l[4]$ and $h[2] < h[4]$ and $c[3] > o[3]$ and $l[3] > l[4]$ and $h[3] < h[4]$ and $c[4] < o[4]$
Text description	signal sell1
Arrow type	arrow2 down
Arrow position	above price
Arrow color	Red
Condition3	
Text description	signal buy2
Arrow type	arrow3 up
Arrow position	below price
Arrow color	Lime
Condition4	
Text description	signal sell2
Arrow type	arrow3 down
Arrow position	above price
Arrow color	Magenta

Load Save OK Отмена Reset

Result:

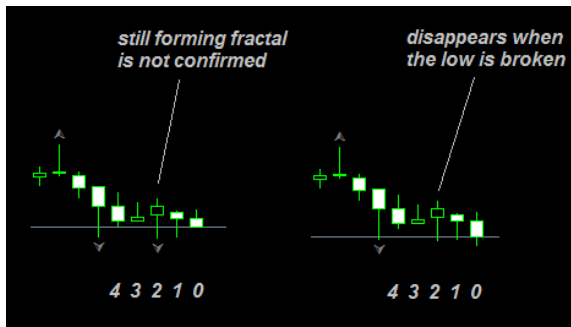


EXAMPLE3: BAR SHIFT FOR ALERT:

Objective:

Signal generated by fractals indicator.

Fractals is actually looking into the future indicator. Up fractal is a high which is higher than two preceding and two subsequent highs. Down fractal is a low which is lower than two preceding and two subsequent lows. Therefore fractal can appear not closer than at the third bar from the right (bar index = 2) and only at the fourth bar (bar index = 3) it becomes confirmed.



We will use alerting on confirmed fractal (bar index = 3).

Settings:

FXMTS_rooster 1.00

Common Inputs Colors Visualization

Variable	Value
<<<=== SECTION ===>>>	<<<=== INDICATORS ===>>>
IndicatorA	Fractals
Path and parameters	
Chart window	show in main
IndicatorB	Custom indicator
Path and parameters	
Chart window	show in new
IndicatorC	Custom indicator
Path and parameters	
Chart window	show in new
<<<=== SECTION ===>>>	<<<=== CONDITIONS ===>>>
Condition1	inda1 = arrow
Text description	signal buy 1
Arrow type	arrow2 up
Arrow position	below price
Arrow color	Aqua
Condition2	inda0 = arrow
Text description	signal sell 1
Arrow type	arrow2 down
Arrow position	above price
Arrow color	Red
Condition3	
Text description	signal buy2
Arrow type	arrow3 up
Arrow position	below price
Arrow color	Lime
Condition4	
Text description	signal sell2
Arrow type	arrow3 down
Arrow position	above price
Arrow color	Magenta
<<<=== SECTION ===>>>	<<<=== ALERTS ===>>>
Pop-up window	true
E-mail	true
Push-notification	true
<<<=== SECTION ===>>>	<<<=== ADVANCED ===>>>
Bars to calculate	500
Bar shift for alert	3
Arrow size	2
Round indicator values	digits

Load Save

OK Отмена Reset

Result:



EXAMPLE4: DATA FROM OTHER TIMEFRAMES:

Objective:

Buy signal – RSI value breaks level 30 up, meanwhile at two next higher timeframes RSI is above of zone 30 and grows up.

timeframe 0: **IndA0 crosssup 30**

timeframe +1: **IndB0 > IndB0[1] AND IndB0 > 30**

timeframe +2: **IndC0 > IndC0[1] AND IndC0 > 30**

Sell Signal - RSI value breaks level 70 down, meanwhile at two next higher timeframes RSI is below of zone 70 and falls down.

timeframe 0: **IndA0 crossdn 30**

timeframe +1: **IndB0 < IndB0[1] AND IndB0 < 70**

timeframe +2: **IndC0 < IndC0[1] AND IndC0 < 70**

Settings:

Custom Indicator - FXMTS_rooster

AboutCommonInputsColorsVisualization

Variable	Value
~~~~~CONDITIONS~~~~~	~~~~~CONDITIONS~~~~~
Condition1	IndA0 crossup 30 AND IndB0>IndB0[1] AND IndB0>30 AND IndC0>IndC0[1] AND IndC0>30
Text description	signal buy 1
Arrow type	arrow2 up
Arrow position	below price
Condition2	IndA0 crossdn 70 AND IndB0<IndB0[1] AND IndB0<70 AND IndC0<IndC0[1] AND IndC0<70
Text description	signal sell 1
Arrow type	arrow2 down
Arrow position	above price
Condition3	
Text description	signal buy2
Arrow type	arrow3 up
Arrow position	below price
Condition4	
Text description	signal sell2
Arrow type	arrow3 down
Arrow position	above price
~~~~~INDICATORS~~~~~	~~~~~INDICATORS~~~~~
IndicatorA	Relative Strength Index
Path and parameters	
TimeFrame	current
IndicatorB	Relative Strength Index
Path and parameters	
TimeFrame	current+1
IndicatorC	Relative Strength Index
Path and parameters	
TimeFrame	current+2
IndicatorD	Custom Indicator
Path and parameters	
TimeFrame	current
IndicatorE	Custom Indicator
Path and parameters	
TimeFrame	current
~~~~~ALERTS~~~~~	~~~~~ALERTS~~~~~
Pop-up window	true
Email	true
Push-notification	true
~~~~~ADVANCED~~~~~	~~~~~ADVANCED~~~~~
Bars to calculate	3000
Bar shift for alert	1
Round indicator values	digits+1
Auto rescale for 5-digit	true

OKОтменаReset

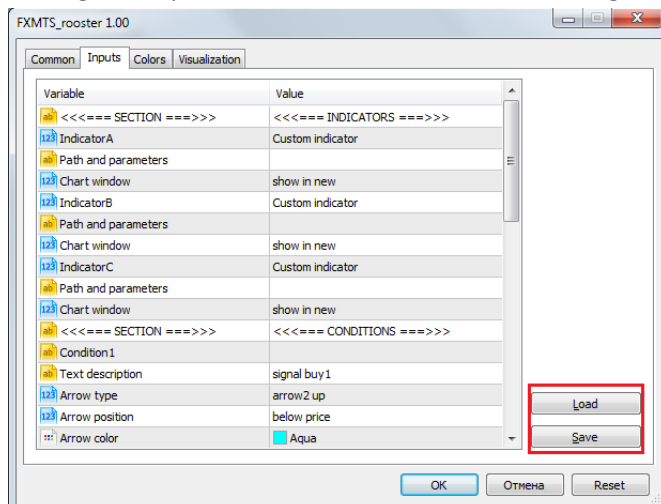
Result:



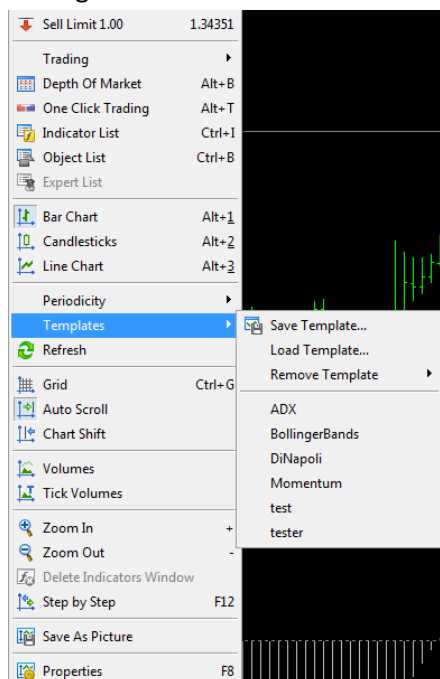
Automatization

Since products sold at the MQL market are not supplied with source codes, you'll have to use different methods in order to launch it faster:

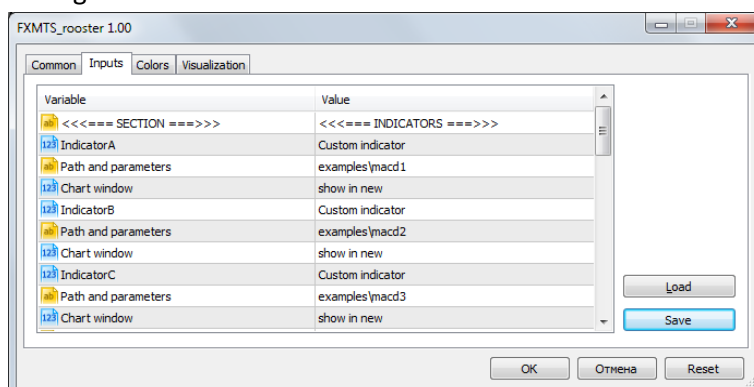
1. Storing set of parameters into a file for further usage:



2. Storing chart with indicators as a template for further usage:



3. If you have source code (mq4/5 file) of your custom indicator, you can integrate its settings inside the code as defaults. Open source code, assign necessary values to the extern/input variables, save the file under the same or new name. Thereafter you won't have to specify those settings in **Rooster**.



Rooster refers to 3 indicators which in fact are copies of the same one but with different settings.

Frequently Asked Questions

1. *I get message "Error: Failed to load Indicator..."*
Check **Path and Parameters** setting again, make sure that the formatting is under the rules, file with specified name exists and parameters are listed correctly.
2. *I get message "Warning: seems that par# type doesn't match for Indicator, type ... is expected."*
Check **Path and Parameters** setting again, make sure that parameters are listed correctly.
3. *I get message "Error: unable to parse value ..." or "Error: unable to parse relator ..."*
Check **Condition** setting again, make sure that the formatting is under the rules.
4. *I can't make proper visual test on MT5, I don't see dependent indicators on the chart.*
Prepare a special template for testing: open new chart, attach necessary indicators (do not attach **Rooster**), then store chart as a template with name "tester.tpl". Run testing again.

Appendix A

Buffer indexation for indicators with more than 1 line:

	MT4	MT5
MACD RVI Stochastic	main = 0 signal = 1	
ADX	main = 0 +DI = 1 -DI = 2	
Bollinger Bands	middle = 0 upper = 1 lower = 2	
Envelopes Fractals	upper = 1 lower = 2	upper = 0 lower = 1
Alligator	jaws = 1 teeth = 2 lips = 3	jaws = 0 teeth = 1 lips = 2
Gator	upper = 1 lower = 2	upper = 0 lower = 2
Ichimoku	tenkan = 1 kijun = 2 senkoua = 3 senkoub = 4 chinkou = 5	tenkan = 0 kijun = 1 senkoua = 2 senkoub = 3 chinkou = 4

Appendix B

Enumerations:

PRICE_CLOSE	1	MODE_SMA	0
PRICE_OPEN	2	MODE_EMA	1
PRICE_HIGH	3	MODE_SMMA	2
PRICE_LOW	4	MODE_LWMA	3
PRICE_MEDIAN	5	VOLUME_TICK	0
PRICE_TYPICAL	6	VOLUME_REAL	1
PRICE_WEIGHTED	7	STO_LOWHIGH	0
		STO_CLOSECLOSE	1