

# UTrailingMini – universal trailing stop

Version 2.0, September, 2021.

**UTrailingMini** – universal trailing stop, made in the form of an expert adviser, but without its own mechanism for opening orders, shortened version of [UTrailing 9](#) EA.

## Opportunities

- 4 trailing stop modes: virtual, normal, total and mobile stop loss;
- 7 options: by points, by bar extremes, by fractals, by volumes, and by indicators;
- virtual stop loss - move manually;
- adding stop loss and take profit to all open positions;
- trailing stop for all orders, all symbols opened in the terminal;
- setting up a trailing stop for of open positions: only by one symbol, by magic number, or by direction;
- closing all orders for the specified amount of the account Equity;
- "hot buttons " on the chart for quick execution of commands;
- close all orders in the terminal using the "hot keys";
- operates on 4- and 5-digit accounts.

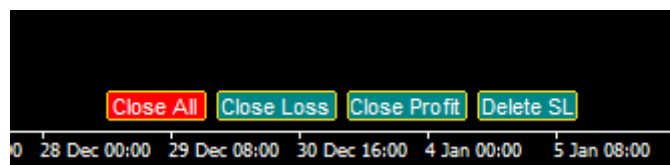
## Hot keys

**Shift + 0** – closes absolutely all trades opened in the terminal.

To do it, you need to place the cursor over the price chart, where the Expert Advisor is running, click on the chart with the left mouse button (select the chart) and then press "Shift" and "0" buttons in sequence. After that, work the EA will be blocked. To unlock, again press "Shift" and "0".

## Hot buttons

Hot buttons are designed for quick execution of one command. After pressing the button, its color changes, and the button is blocking, when pressed again, removed the blocking and leads to the original state of the button. Any press of the button EA fixes in its log, you can see the current position of the button on the tab "Experts". You can also unblock the button using the new initialization of the EA (for example, switching to another timeframe). In this case, you do not need to press anything, the blocking is removed automatically.



**Close All** – closes all open positions and deletes all pending orders.

**Close Loss** – closes only orders that have a loss.

**Close Profit** – closes only orders with profit.

**Delete SL** – removes stop loss from open orders.

**Important:** if the command "All symbols" = true is active, then when you press the "hot" button, the task will be executed for all orders and all positions currently open in the terminal! If "All symbols" = false, then the task will be performed only on the current currency pair on which the EA is installed.

## External variables

### 1. GENERAL SETTINGS

### 2. TRAILING OPEN POSITION

### 3. OTHER SETTINGS

## Block 1. GENERAL SETTINGS

Variable	Value
ab 1. GENERAL SETTINGS	
All symbols	false
Magic number (-1 for all)	-1
Positions: >	Long & Short
Add SL and TP for all open orders	true
Stop Loss in points	30.0
Virtual stop loss	false
Take Profit in points	120.0
Breakeven	true
Profit to enable a breakeven	12.0
Breakeven level	2.0
Close by Equity	false
Amount of Equity, in the currency of th...	0.0
Slippage	3

Load Save OK Отмена Reset

**All symbol** = false, if true, the EA will control all trades for all symbols.

**Magic number** = -1 - allows you to specify the EA, which orders (with which magic number) it needs to track. The magic number will be displayed on the chart for your convenience and appear in the right corner of the terminal's screen to the left of the EA.

If you allow working with all symbols and leave the magic number 0 on the chart, the message "0. All symbol" and the EA will monitor and work with all orders in the terminal that were opened manually.



If you set the magic number -1 (minus one), the chart will display the message "-1" and the EA will work with all open orders on this currency pair (including orders opened manually).

### Positions:

- **Long only** - to trail the stop loss only for buy orders;
- **Short only** - to trail the stop loss only for sell orders;
- **Long & Short** - trailing stop in both directions.

Magic number (-1 for all)	-1
Positions: >	Long & Short
Add SL and TP for all open orders	Long only
Stop Loss in points	Short only
Virtual stop loss	Long & Short
	false

**Add SL and TP for all open orders** = true - the EA will set a stop loss or take profit for all open orders.

**Stop Loss in points** = 30 - the stop loss size in the points

**Virtual stop loss** = false - the stop loss is invisible to the broker, if true, the horizontal line of the virtual stop loss will appear on the chart. The line can be moved by hand, in any direction.

**Take Profit in points** = 120 - the take profit in the points.

**Breakeven** – when there is a small profit, and trailing stop is still not included, the EA moves the stop loss set at breakeven level.

**Profit to enable a breakeven** = 12 – level of take-profit in points, at which a breakeven is enabled

**Breakeven level** = 2 – sets the level, at which a stop loss must be moved: if set to 1, then the position will be closed, when the profit is 1 point; if set to 0, then the position will be closed with the profit of 0 points.

**Close by Equity** = false - if true, allow closing all open positions and deleting all pending orders when the account Equity reach the set value.

**Amount of Equity, in the currency of the deposit** = 0.0 - the amount of Equity at which all orders will be closed, the value can be higher or lower than the account Balance.

**Slippage** = 3 - the level of slippage in points on the volatile market it is better to increase.

## Block 2. TRAILING OPEN POSITION

Variable	Value
__2. TRAILING OPEN POSITION__	
Mode selection: >	Total trailing stop
Timeframe for trailing stop: >	1 Hour
Trailing stop by: >	Points
Virtual trailing stop	false
Trailing stop level	20.0
Trailing step	2.0
Indent in points, except by "Points"	1.0
ATR period	14
Level of Volumes	100
Moving Average period	34
MA shift	0
MA method: >	Exponential
Applied price the MA: >	Close price
Step Parabolic SAR	0.02
Maximum Parabolic SAR	0.2

**Mode selection:** – the choice of strategy is the trailing stop, maybe 5 positions:

- **Normal** - standard trailing stop, starts trail only when there is profit;
- **Mobile stop loss** - stop loss follows the price like a trailing stop immediately after the order is opened;
- **Total trailing stop** - by one (average) stop loss closes all open orders in one direction, including losing orders.
- **Disabled** - trailing stop is disabled and does not work.

ab __2. TRAILING OPEN POSITION__	
123 Mode selection: >	Total trailing stop
123 Timeframe for trailing stop: >	Normal
123 Trailing stop by: >	Mobile stop loss
Virtual trailing stop	Total trailing stop
	Disabled

**Timeframe for trailing stop:** = «1 Hour» - choice of the timeframe by which you want to work with trailing stop (except for Points).

123 Mode selection: >	Total trailing stop
123 Timeframe for trailing stop: >	1 Hour
123 Trailing stop by: >	current
Virtual trailing stop	1 Minute
	5 Minutes
1/2 Trailing stop level	15 Minutes
1/2 Trailing step	30 Minutes
1/2 Indent in points, except by "Points"	1 Hour
123 ATR period	4 Hours
	1 Day
123 Level of Volumes	1 Week
	1 Month

**Trailing stop by:** - selecting the type of trailing stop on the instrument can be 7 positions:

- **Points** - standard trailing stop by points;
- **High/Low** - the High/Low of the previous bar;
- **Fractals** - by fractals;
- **Volumes** - by volumes;
- **Moving Average** - by moving average;
- **Parabolic SAR** - by Parabolic SAR;
- **ATR** - by ATR.

123 Timeframe for trailing stop: >	1 Hour
123 Trailing stop by: >	Points
Virtual trailing stop	Points
1/2 Trailing stop level	High/Low
1/2 Trailing step	Fractals
1/2 Indent in points, except by "Points"	Volumes
	Moving Average
	Parabolic SAR
123 ATR period	ATR

**Virtual trailing stop** = false - virtual (not visible for broker) a trailing stop, for a trader in the lower right corner of the graph displays information about the position of the virtual stop loss.

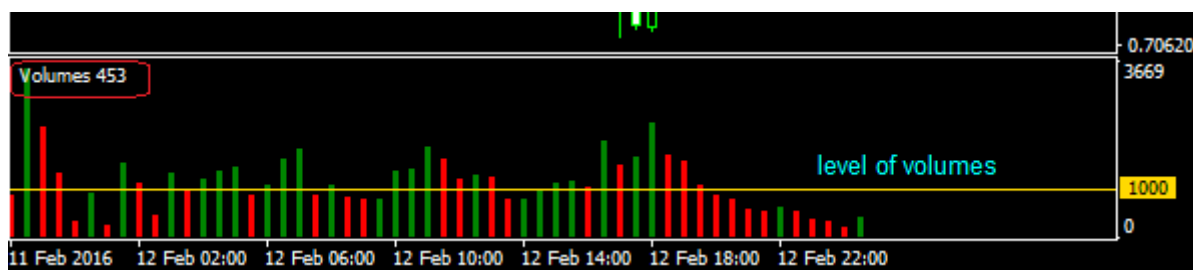
**Trailing stop level** = 20 - trailing stop level in points.

**Trailing step** = 2 - step of trailing: if the profit is 30 points, trailing will move a stop-loss to 2 points.

**Indent in points, except "by Points"** - the distance in points from the stop loss to the maximum or the minimum of the bar or the fractal.

**ATR period** = 14 - period ATR (Average True Range). ATR, you can adjust the trailing stop distance from the price using "Indent in points, except by Points" by increasing or decreasing its value. If Buy order, then the amount "Indent ..." + the ATR level is deducted from the Bid price. If Sell order, then the amount "Indent ..." + the ATR level is added to the Ask price.

**Level of Volumes** = 100 - sets the level volumes. Trailing stop is work if columns of a volume histogram are lower than a pre-set level – 100, if the columns are higher than the level, then trailing will be temporarily disabled, until the columns are lower than the pre-set level, for 5-digit brokers automatically increases to 10.



**Moving Average period** = 34

**MA shift** = 0.

**MA method:** = Exponential.

123	MA shift	0
123	MA method: >	Exponential
123	Applied price the MA: >	Simple
1/2	Step Parabolic SAR	Exponential
1/2	Maximum Parabolic SAR	Smoothed
		Linear weighted

**Applied price:** - choosing price to calculate the moving average.

123	MA method: >	Exponential
123	Applied price the MA: >	Close price
1/2	Step Parabolic SAR	Close price
1/2	Maximum Parabolic SAR	Open price
		High price
ab	...	Low price
ab	3. OTHER SETTINGS	Median price
		Typical price
		Weighted price
	Alerts modified stop loss	

**Step Parabolic SAR** = 0.02.

**Maximum Parabolic SAR** = 0.2.

### Block 3. OTHER SETTINGS

Variable	Value
ab 3. OTHER SETTINGS	
Alerts modified stop loss	true
Language: >	English
Background: >	Light
Font size in messages: >	Small
Show info messages	true
Show hot buttons	true
Deleting objects from the chart	false
Delete objects, in minutes	120

Load Save

OK Отмена Reset

**Alerts modified stop loss** = true - stop loss modification sound signal if false, the sound is disabled.

**Language:** = English – switch the language on the info panel can be English or Russian.

Alerts modified stop loss	true
123 Language: >	English
123 Background: >	English
123 Font size in messages: >	Russian

**Background:** = Dark1 - selects the color background of the chart Dark1 or Dark2 and Light.

123 Language: >	English
123 Background: >	Light
123 Font size in messages: >	Light
Show info messages	Dark1
	Dark2

**Font size in messages:** = Small - you can choose the font size small, medium, big.

123 Background: >	Light
123 Font size in messages: >	Medium
Show info messages	Small
Show hot buttons	Medium
Deleting objects from the chart	Big
	false

Load

**Show info messages** = true - displays textual information about the financial status of the account and currently active commands on the chart, if false, it does not show messages.

**Show hot buttons** = true - yes, show, false - no, do not show, "hot buttons" in the strategy tester do not work!

**Deleting objects from the chart** = true - allow clearing the chart from unnecessary graphical objects (modifications of stop loss levels, take profit, etc.).

**Delete objects, in minutes** = 120 - clears the chart from unnecessary graphical objects (arrows, modified stop-loss and take-profit levels, etc.) in a certain period of time set in minutes (120) passed from the moment, when an object is created.

[www.taranus.ru](http://www.taranus.ru)