

Attention! Enabling or disabling a utility function, respectively, hides or displays the control buttons for that function.

The order of parameters in the utility may differ slightly from the order in the instructions. Here they are collected by application for a particular function.

Available functions — this parameter selects which main functions of the utility will be enabled: synchronization of chart offset by the first bar and/or changing the trading symbol.

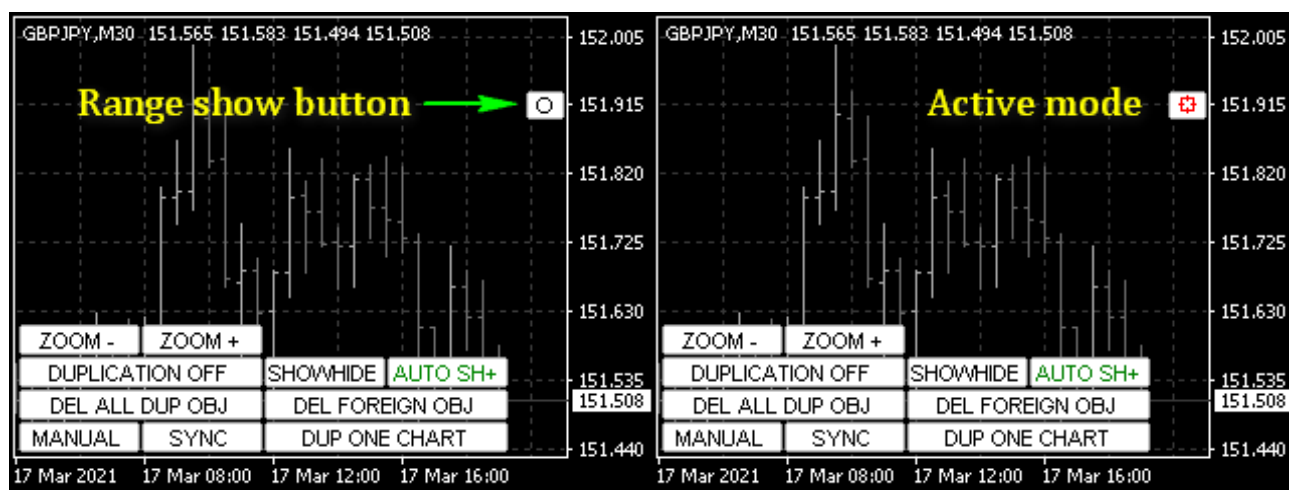
When the TS change function is activated, any method of changing the trading symbol will be recognized by the utility and processed in the same way as pressing the button.

Chart subwindow number (0-main) — by default, the utility buttons are located in the main chart window, but you can place them in any of the subwindows (the value of this parameter in the image on the right = 1). If you specified a value greater than the number of chart subwindows, the utility will automatically place the buttons in the last (lower) subwindow.



Enable range/crosshair show button — enables the function of highlighting the selected bar on smaller charts or global crosshair on selected charts. Usually, the button is located in the upper-right corner of the chart, but if the main utility buttons are selected in the upper-right corner of the chart, then the button will be located in the lower-right corner of the chart.

When the function (button) is activated, the color and appearance change.



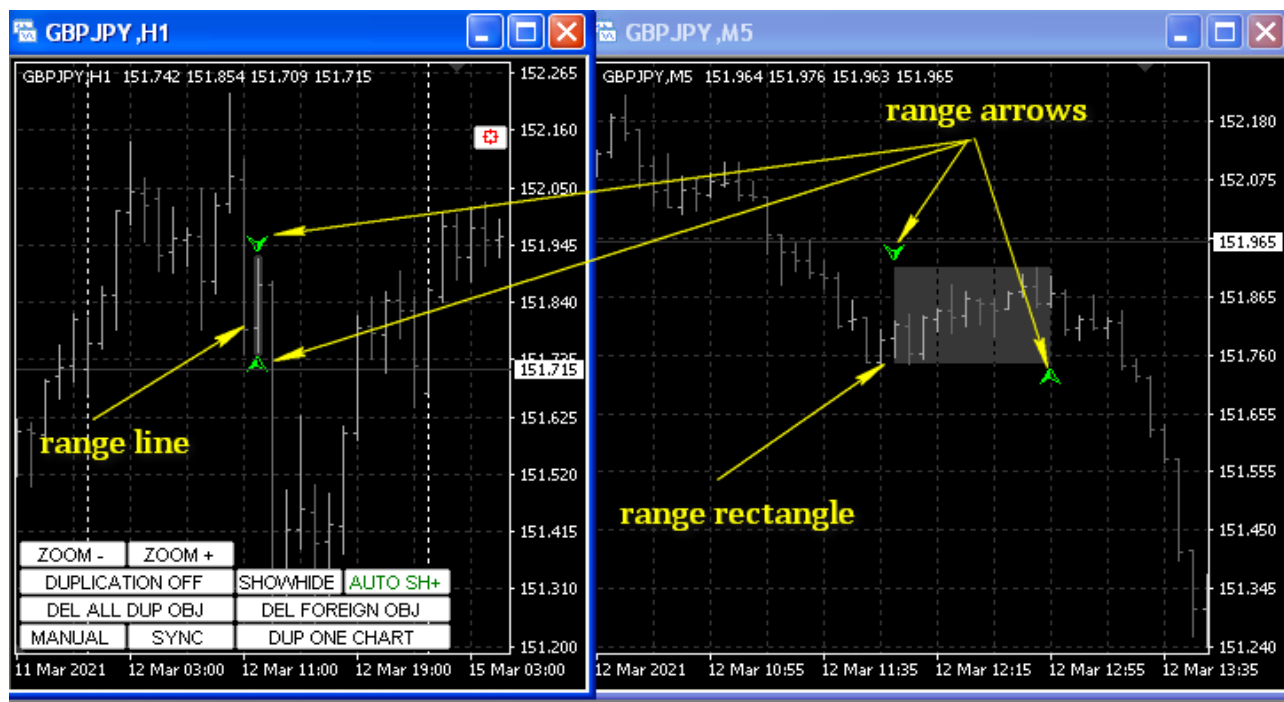
After activating the range selection mode, move the cursor over the desired bar and click with the left mouse button. The range of bars included in the selected bar will be highlighted on all charts of the current trading symbol of smaller TF. To delete the range selection or global crosshair objects, press ESCAPE or disable the mode.

Range rectangle color — the color of the line and rectangle for selecting the bar range.

Show range candle arrows — enables additional highlighting of the start and end of the range of the selected bar with arrows.

Range candle arrows color — the color of the bar selection arrows.

Range line width — width of the selection line for the selected bar on the chart with the utility.



Parameters for the global crosshair mode:

Vertical crosshair line color — color of the vertical crosshair line.

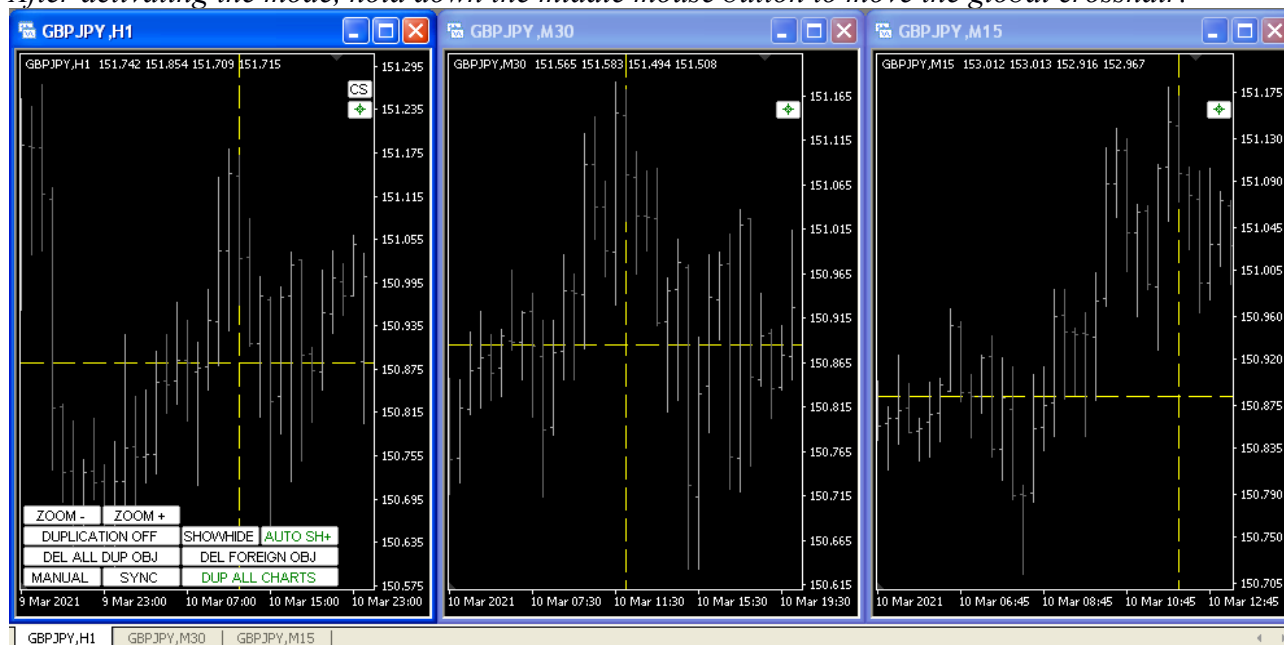
Horizontal crosshair line color — the color of the horizontal crosshair line.

Vertical crosshair line type — the style of the vertical crosshair line.

Horizontal crosshair line type — the style of the horizontal crosshair line.

Additional bars for charts shift — the number of offset bars when moving the crosshair to the edges of the chart.

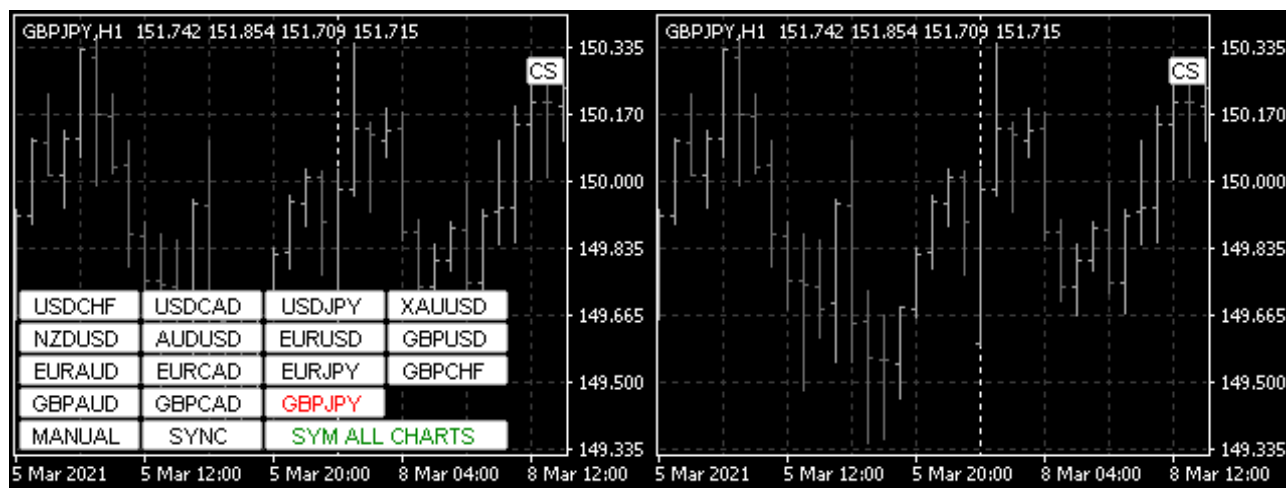
After activating the mode, hold down the middle mouse button to move the global crosshair.



Enable show/hide utility button (CS) — display a button that allows you to hide or display all other buttons of the utility, for example, to look at the chart bars (picture on the right) that are located under the buttons. At the same time, the "hot" keys and slideshow mode continue to work.

CS utility button shiftX — offset of the button from the anchor angle (upper or lower right corner, which is selected automatically so as not to intersect with the utility buttons) horizontally in pixels. This value also affects the offset of the **range/crosshair** button.

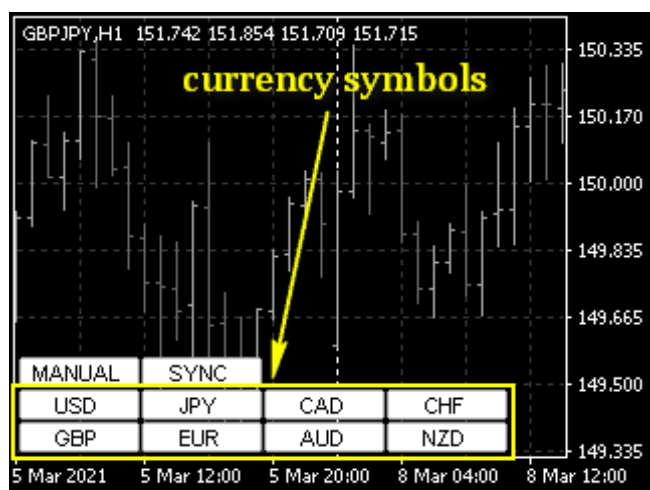
CS utility button shiftY — the offset of the button from the anchor angle (upper or lower right corner, which is selected automatically so as not to intersect with the utility buttons) vertically in pixels. This value also affects the offset of the **range/crosshair** button.



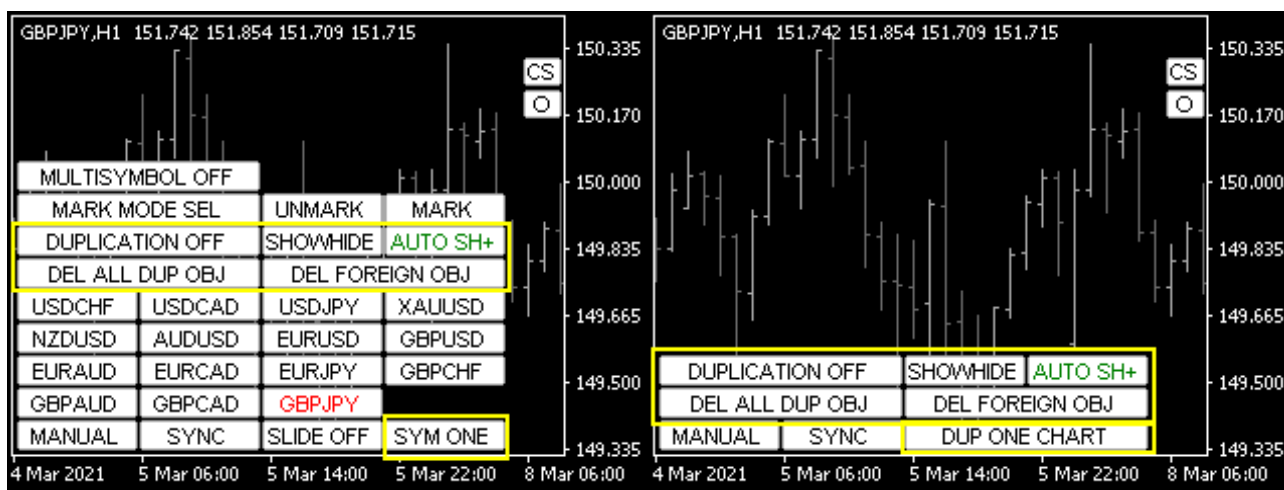
Show 8 currency symbols — displays buttons for 8 major currencies. When you click on the currency button, charts with trading symbols from the list of the market overview window or from the one specified by the user in the **"String for custom instruments"** parameter will be opened. If you have already used this function, the utility will use previously opened windows. This saves the current chart template and, if available, loads the previously saved one.

Currency buttons in a horizontal row — the number of horizontal currency buttons in one row.

Template name for new charts — name of the template that will be used to open new charts.



Show duplication buttons — enable the display of buttons of the copy function (synchronization of object parameters). The copy objects function allows you to copy the created or modified object to the selected charts from the utility chart (provided that the trade symbol of the selected chart matches the trade symbol of the chart with the utility). To copy an item, select the required charts using the select button: **SYM (DUP) ONE/ALL/SEL** (the option of the **DUP** button appears if you do not use the function of switching trading symbols — the picture on the right). Before creating or modifying an object, activate the function by pressing the **DUPLICATION** button in the **ON** mode. Next, create an object, move it, or change its parameters. The current object will be copied and its parameters synchronized for all selected charts. After that, turn off the duplication mode by pressing the **DUPLICATION** button to the **OFF** value.

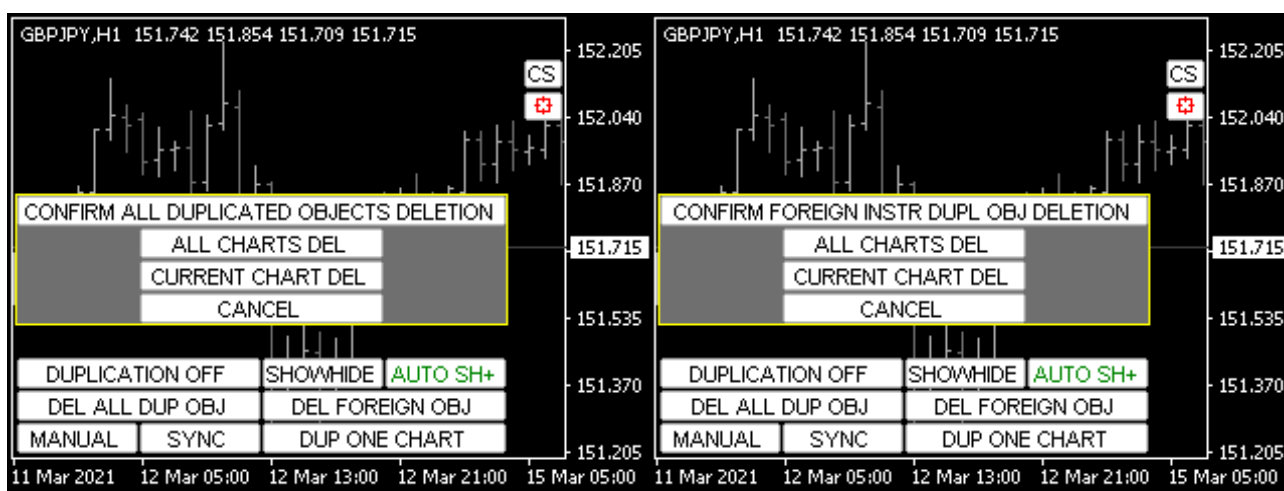


SHOWHIDE — this button allows you to hide/display objects (for example, when changing trade symbols) that were created by duplicating them.

AUTO SH± — button enables/disables the mode of automatic hiding and displaying of the corresponding duplicated objects when switching between trade symbols.

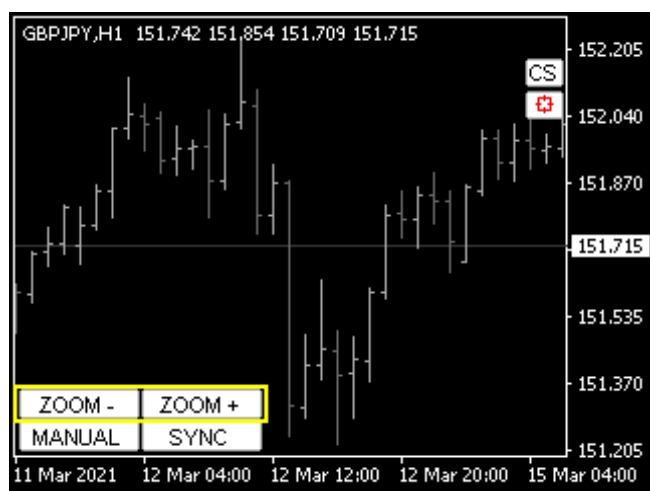
DEL ALL DUP OBJ — this button allows you to delete all objects created by the duplicate function. When clicked, a dialog box appears asking you to delete these objects from the current or all charts (picture on the left).

DEL FOREIGN OBJ — this button allows you to delete all objects created by the duplicate function that do not belong to the current trade symbol. When clicked, a dialog box appears asking you to delete these items from the current or all charts (see the image on the right).



Show zoom buttons — enable the display of the chart zoom function buttons.

Autosync charts scale (with utility chart) — enable automatic alignment of the scale value for charts when changing. If this parameter is disabled, then the scale will simply be changed by one position. If enabled, then all charts will be set to the same scale value as the chart with the utility. *This function allows you to control the zoom level for all charts at once.*



Highlight the positions status on buttons — enable the mode of highlighting the current total profit or loss value on the buttons if there are open positions

The highlight function sums up the values of all open positions for a trading symbol and, depending on the value, highlights the border of the corresponding button with the specified color, if the button of this trading symbol is on the chart.

Symbol in profit color — border color for displaying profit.

Symbol in loss color — the border color to display the loss.

String for custom instruments (separated by commas) — a string for a custom list of trading symbols. If this line is empty, the list of trading symbols will be taken from the market overview window

Additional symbols for instruments — additional symbols in the names of trade symbols. If you use the previous parameter and your broker has added additional symbols to the names, such as EURUSD**ecn** — then you can enter only the main names (EURUSD) in the list, and the **ecn** value in this parameter.

Use mouse button to highlight symbol — enable button selection using the mouse keys. *This function allows you to highlight the trade symbol buttons in color. This can be used, for example, in slideshow mode.*

Hide standard right mouse button menu — hide the standard submenu that appears when you click on the right mouse button (*in the MT4 version, this option does not work*).

Enable symbol changing with cursor up/down — enable control of changing the trading symbol with the cursor keys up/down.

Enable TF changing with cursor left/right — enable time frame change control with the cursor keys left/right.

Enable sync charts with hot key " S " — enable syncing of the first chart bar by pressing the "S" key.

Turn off autoscroll for autosync — disable auto-offset for charts in auto-sync mode.

Buttons in horizontal row — the number of buttons of trading symbols in a horizontal row.

Object prefixes to ignore (separated by commas) - object prefixes to ignore, separated by commas. In multisymbols chart mode and when using the duplicate function, graphic objects with the specified prefixes will be ignored by the utility. This feature can be used, for example, for objects created by other indicators, so that the utility does not rename or hide such objects when changing the trading symbol.

Slideshow mode allows you to switch trading symbols or timestamps. The ESCAPE key disables slideshow mode.

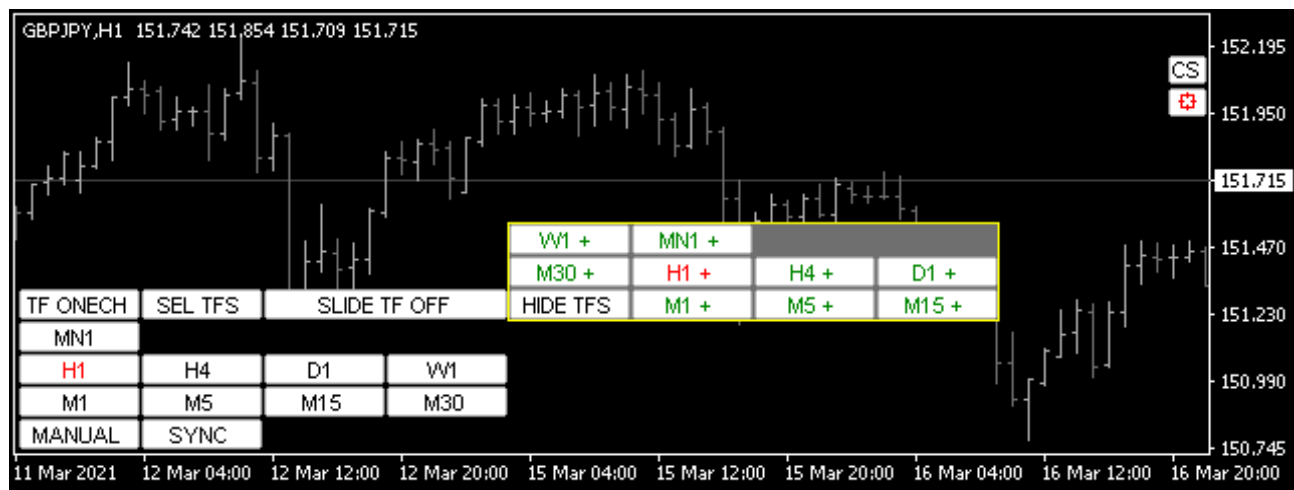
Show slide mode buttons — enable the display of buttons with the slideshow function.

Slide pause in seconds — pause in seconds between switching operations.

Slide symbols ascend — mode for switching symbols in ascending order.

Slide timeframes ascend — mode for switching timeframes in ascending order.

*For the TF slideshow mode, you can set which TF to use and select switching for the current or all charts. The **SEL TFS** button opens a dialog for selecting the required TFS. The **HIDE TFS** button hides the TF selection dialog.*



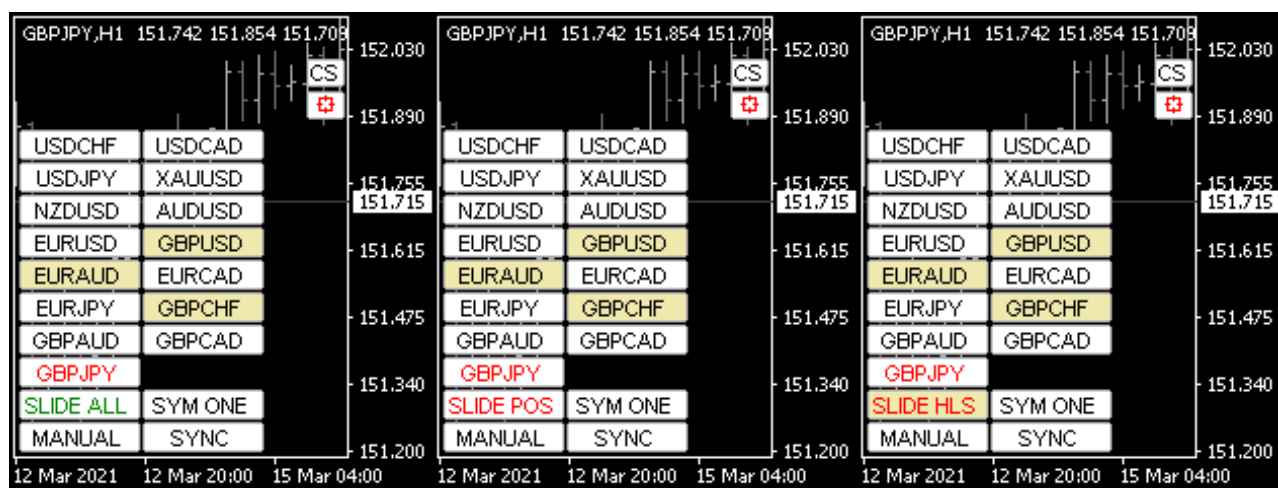
For the trading symbol slideshow mode, you can choose one of three options::

SLIDE ALL — by all symbols,

SLIDE POS — by symbols with open positions,

SLIDE HLS — by selected symbols.

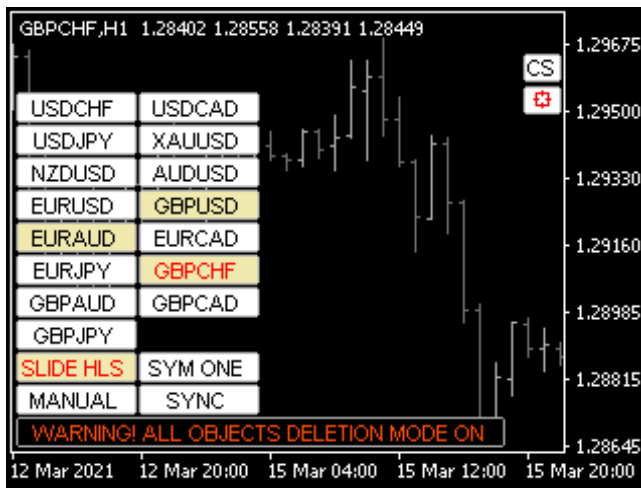
If there are no open positions or selected symbols and the corresponding mode is selected, the slideshow will be performed for all symbols.



Objects deletion mode — enables the function of deleting objects when changing the TF, trading symbol, chart parameters or indicators that affect the initialization or deinitialization procedure of the utility. *This function will be useful if you use an indicator that leaves objects belonging to another trading instrument on the chart.*

Show 'all objects delete warning' label — enables the display of the warning label about the activated function for deleting all objects.

Object prefixes to delete (separated by commas) — object prefixes to delete, separated by commas.



Horizontal shift — the offset of the utility buttons from the horizontal anchor angle.

Vertical shift — the vertical offset of the buttons from the anchor angle.

Width of buttons — width of buttons.

Width of selection buttons — width of the chart selection buttons.

Height of buttons — the height of the buttons.

Font size — the font size of the button text.

Font name — name of the font.

Button color (normal) — the background color of the button in normal mode.

Button color (selected) — the background color of the selected button.

Button border color — the border color of the button.

Text color (normal) — color of the button text in normal mode.

Text color (selected) — the text color of the selected button.

Text color (active mode button) — the text color of the active button.

Button color (highlights) — the background color of the selected button in normal mode.

Button color (highlights selected) — the background color of the selected button.

Text color (highlights normal) — the text color of the selected button in normal mode.

Text color (highlights selected) — color of the text of the selected button in selected mode.

Transparent mode — the transparency mode.

Corner — the button anchor angle.

The timeframe selection function allows you to set a timeframe for the current or all charts. When the function is activated, any method of changing the TF will be recognized by the utility and processed in the same way as pressing the button.

Show timeframe buttons — enable the display of timeframe selection buttons.

Show only selected TF buttons — show only selected timeframe buttons. By default, all standard TF buttons are shown, but you can disable unnecessary ones.

TF Buttons in a horizontal row — the number of horizontal buttons in a row.

TF Width of buttons — the width of the buttons.

TF Height of buttons — the height of the buttons.

TF Font size — the font size of the button text.

TF Font name — name of the font.

TF Button color (normal) — the background color of the button in normal mode.

TF Button color (selected) — background color of the active (current) timeframe button.

TF Button border color — the border color of the buttons.

TF Text color (normal) — color of the button text in normal mode.

TF Text color (selected) — color of the button text for the active (current) timeframe.

TF Transparent mode — button transparency mode.

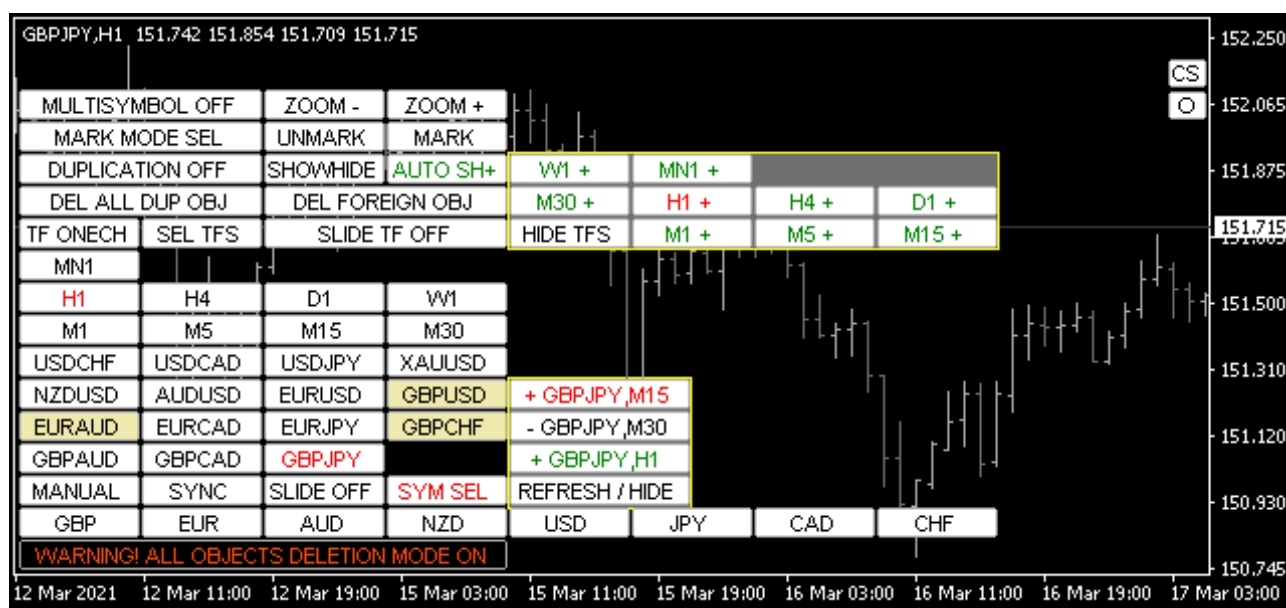
Utility working mode! — one of three modes of operation of the utility: single, main and additional. *You need this option to manage the utility from different charts. If you plan to manage the utility functions from different charts: set the Main mode for the main utility and the Auxiliary mode for the utility on other charts, otherwise leave the default value. This option currently only works for the global crosshair function. Attention! The **Indicator unique ID** value must be the same for the main and additional utilities.*

Custom event additional value — additional value of the custom event code. *If you use other indicators or experts that trigger custom chart events, and if they don't have an event ownership check, you can use this parameter so that the event codes don't overlap.*

Indicator unique ID — a unique identifier key for the utility to recognize its own objects.

Enable debug information — enables debugging information.

Utility buttons click order — priority for processing button clicks on the chart.



MULTISYMBOL ON/OFF — this button enables binding objects to the current trade symbol (a marker string is added to the object name), which allows you to automatically hide/display objects when changing trade symbols. *Attention! For the function to work properly, you must use short object names!*

MARK MODE SEL/ALL — this button for selecting the object binding mode: **SEL** — only selected objects, **ALL** — all objects.

MARK — this button allows you to manually link objects to the current trading symbol.

UNMARK — this button allows you to remove a mark for objects linked to the current trading symbol. *The multisymbol buttons are enabled together with the duplicate buttons.*

REFRESH/HIDE — this button allows you to hide/update the list of all available charts to select the necessary ones.