

# UTrailingMini – universal trailing stop

Version 1.0, January 2021.

**UTrailingMini** – universal trailing stop, made in the form of an expert adviser, but without its own mechanism for opening orders, shortened version of UTrailing EA.

**UTrailingMini** EA is useful to any trader, but most of all like traders who trade hands, for them it will be a great assistant.

## Opportunities

- 3 types: normal trailing stop, mobile stop loss, total trailing stop;
- 7 main modes: by points, by bar extremes, by fractals, by volumes and by ATR, Parabolic SAR and Moving Average indicators;
- adding stop loss and take profit to open orders;
- trailing stop for all orders opened in the terminal;
- trailing stop of open positions can be configured to work with selected orders: only by symbol, by magic number or by direction;
- possibility of one-time stop loss setting for all open orders;
- virtual (invisible) trailing stop;
- virtual manual trailing stop - moves only with your hands;
- closing all orders at the specified level of Equity;
- "hot buttons" for quick commands ("Close All", "Close Loss", "Close Profit", "Delete SL");
- simultaneous closure of all orders in the terminal using "hot keys";
- operates on 4- and 5-digit accounts.

## Hot keys

**Shift + 0** – closes absolutely all trades opened in the terminal.

To do it, you need to place the cursor over the price chart, where the Expert Advisor is running, click on the chart with the left mouse button (select the chart) and then press "Shift" and "0" buttons in sequence. After that, work the EA will be blocked. To unlock, again press "Shift" and "0".

## Hot buttons

Hot buttons are designed for quick execution of one command. After pressing the button, its color changes, and the button is blocking, when pressed again, removed the blocking and leads to the original state of the button. Any press of the button EA fixes in its log, you can see the current position of the button on the tab "Experts". You can also unblock the button using the new initialization of the EA (for example, switching to another timeframe). In this case, you do not need to press anything, the blocking is removed automatically.



**Close All** – closes all orders, absolutely all orders in the terminal and removes all pending orders.

**Close Loss** – closes only orders that have a loss.

**Close Profit** – closes only orders with profit.

**Delete SL** – removes stop loss from open orders.

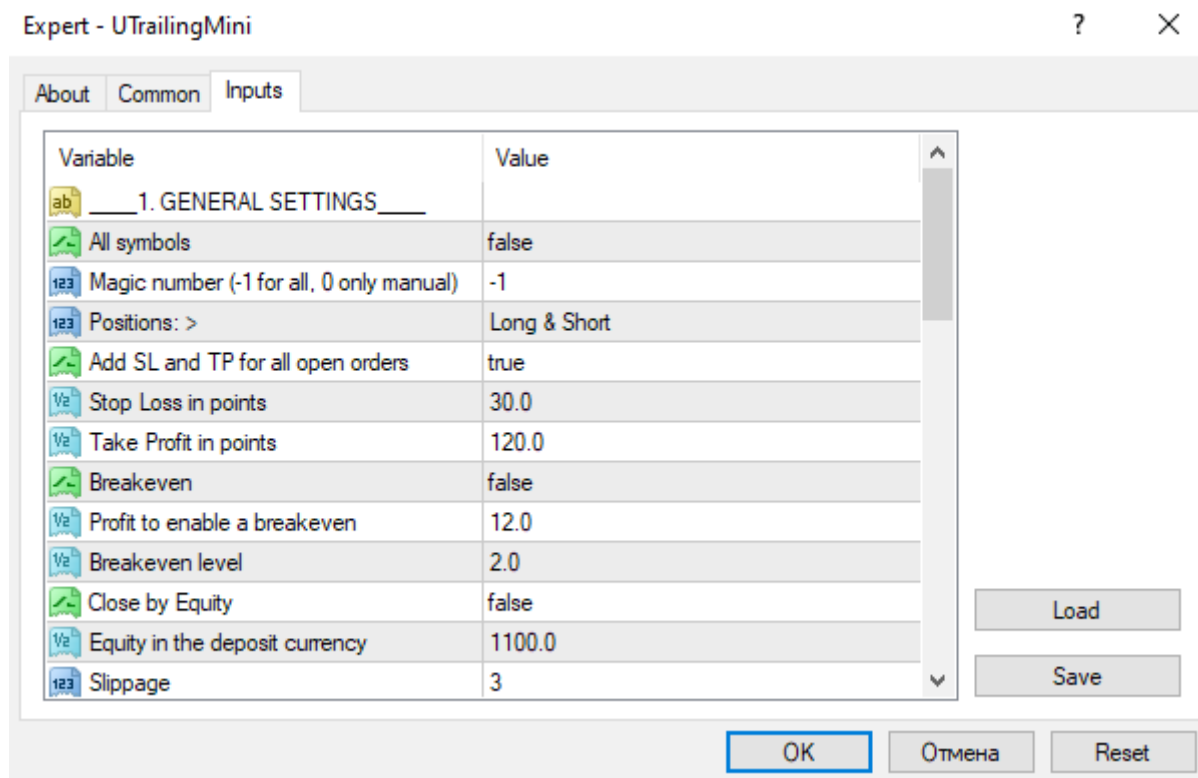
## External variables

1. GENERAL SETTINGS

2. TRAILING OPEN POSITION

3. OTHER SETTINGS

## Block 1. GENERAL SETTINGS



**All symbol** = false, if true, the EA will control all trades for all symbols.

**Magic number** = -1 - allows you to specify the EA, which orders (with which magic number) it needs to track. The magic number will be displayed on the chart for your convenience and appear in the right corner of the terminal's screen to the left of the EA.

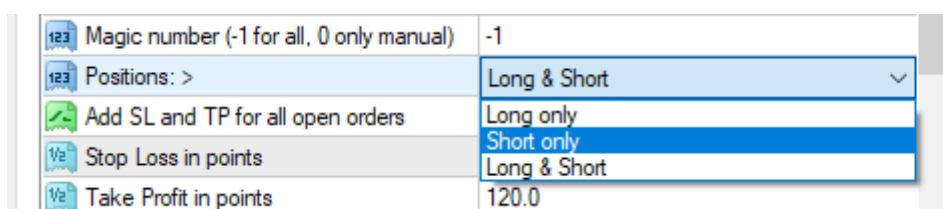
If you allow working with all symbols and leave the magic number 0 on the chart, the message "0. All symbol" and the EA will monitor and work with all orders in the terminal that were opened manually.



If you set the magic number -1 (minus one), the chart will display the message "-1" and the EA will work with all open orders on this currency pair (including orders opened manually).

### Positions:

- **Long only** - to trail the stop loss only for buy orders;
- **Short only** - to trail the stop loss only for sell orders;
- **Long & Short** - trailing stop in both directions.



**Add SL and TP for all open orders** = true - the EA will set a stop loss or take profit for all open orders.

**Stop Loss in points** = 30 - the stop loss size in the points

**Take Profit in points** = 120 - the take profit in the points.

**Breakeven** – when there is a small profit, and trailing stop is still not included, the EA moves the stop loss set at breakeven level.

**Profit to enable a breakeven** = 12 – level of take-profit in points, at which a breakeven is enabled

**Breakeven level** = 2 – sets the level, at which a stop loss must be moved: if set to 1, then the position will be closed, when the profit is 1 point; if set to 0, then the position will be closed with the profit of 0 points.

**Close by Equity** = false, if true, allow closing orders when Equity reaches the set level.

**Equity in the deposit currency** = 1100 - the Equity level in the deposit currency at which all orders on the chart will be closed.

**Slippage** = 3 - the level of slippage in points on the volatile market it is better to increase.

## Block 2. TRAILING OPEN POSITION

Expert - UTrailingMini

About Common Inputs

| Variable                             | Value       |
|--------------------------------------|-------------|
| <b>__2. TRAILING OPEN POSITION__</b> |             |
| Virtual trailing stop: >             | Disabled    |
| Mode selection: >                    | Normal      |
| Timeframe for trailing stop: >       | 1 Hour      |
| Trailing stop by: >                  | Points      |
| Trailing stop level                  | 20.0        |
| Trailing step                        | 2.0         |
| Indent in points, except by "Points" | 1.0         |
| ATR period                           | 14          |
| Level of Volumes                     | 100         |
| Moving Average period                | 34          |
| MA shift                             | 0           |
| MA method: >                         | Exponential |
| Applied price the MA: >              | Close price |
| Step Parabolic SAR                   | 0.02        |
| Maximum Parabolic SAR                | 0.2         |

Load Save

OK Отмена Reset

**Virtual trailing stop:** - invisible to the broker trailing stop, for the trader on the chart will appear horizontal lines:

- **By indicators** - select the desired tool in the "Trailing stop by:";
- **Manual control** - the virtual trailing stop line can be moved only by hand in any direction, orders will be closed only with a positive profit, with a negative profit the trailing stop does not work;
- **Disable** - virtual trailing stop is not used.

|                                      |                |
|--------------------------------------|----------------|
| <b>__2. TRAILING OPEN POSITION__</b> |                |
| Virtual trailing stop: >             | Disabled       |
| Mode selection: >                    | By indicators  |
| Timeframe for trailing stop: >       | Manual control |
| Trailing stop by: >                  | Disabled       |
|                                      | Points         |

**Mode selection:** – the choice of strategy is the trailing stop, maybe 5 positions:

- **Normal** - standard trailing stop, starts trail only when there is profit;
- **Mobile stop loss** - stop loss follows the price like a trailing stop immediately after the order is opened;
- **Total trailing stop** - by one (average) stop loss closes all open orders in one direction, including losing orders.
- **Disabled** - trailing stop is disabled and does not work.

|                                    |                     |
|------------------------------------|---------------------|
| 123 Virtual trailing stop: >       | Disabled            |
| 123 Mode selection: >              | Normal              |
| 123 Timeframe for trailing stop: > | Normal              |
| 123 Trailing stop by: >            | Mobile stop loss    |
| 1/2 Trailing stop level            | Total trailing stop |
| 1/2 Trailing step                  | Disabled            |
|                                    | 2.0                 |

**Timeframe for trailing stop:** = «1 Hour» - choice of the timeframe by which you want to work with trailing stop (except for Points).

|  |            |
|--|------------|
| 123 Mode selection: >                    | Normal     |
| 123 Timeframe for trailing stop: >       | 1 Hour     |
| 123 Trailing stop by: >                  | current    |
| 1/2 Trailing stop level                  | 1 Minute   |
| 1/2 Trailing step                        | 5 Minutes  |
| 1/2 Indent in points, except by "Points" | 15 Minutes |
| 123 ATR period                           | 30 Minutes |
| 123 Level of Volumes                     | 1 Hour     |
| 123 Moving Average period                | 4 Hours    |
|  | 1 Day      |
|  | 1 Week     |
|  | 1 Month    |

**Trailing stop by:** - selecting the type of trailing stop on the instrument can be 7 positions:

- **Points** - standard trailing stop by points;
- **High/Low** - the High/Low of the previous bar;
- **Fractals** - by fractals;
- **Volumes** - by volumes;
- **Moving Average** - by moving average;
- **Parabolic SAR** - by Parabolic SAR;
- **ATR** - by ATR.

|  |                |
|--|----------------|
| 123 Timeframe for trailing stop: >       | 1 Hour         |
| 123 Trailing stop by: >                  | Points         |
| 1/2 Trailing stop level                  | Points         |
| 1/2 Trailing step                        | High/Low       |
| 1/2 Indent in points, except by "Points" | Fractals       |
| 123 ATR period                           | Volumes        |
| 123 Level of Volumes                     | Moving Average |
|  | Parabolic SAR  |
|  | ATR            |

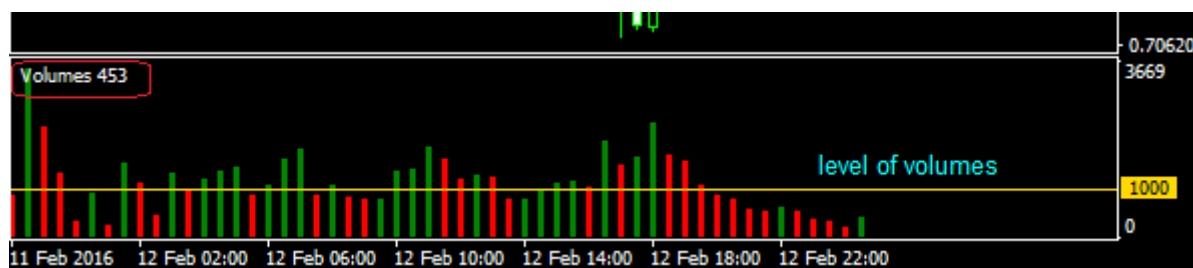
**Trailing stop level** = 20 - trailing stop level in points.

**Trailing step** = 2 - step of trailing: if the profit is 30 points, trailing will move a stop-loss to 2 points.

**Indent in points, except "by Points"** - the distance in points from the stop loss to the maximum or the minimum of the bar or the fractal.

**ATR period** = 14 - period ATR (Average True Range). ATR, you can adjust the trailing stop distance from the price using "Indent in points, except by Points" by increasing or decreasing its value. If Buy order, then the amount "Indent ..." + the ATR level is deducted from the Bid price. If Sell order, then the amount "Indent ..." + the ATR level is added to the Ask price.

**Level of Volumes** = 100 - sets the level volumes. Trailing stop is work if columns of a volume histogram are lower than a pre-set level – 100, if the columns are higher than the level, then trailing will be temporarily disabled, until the columns are lower than the pre-set level, for 5-digit brokers automatically increases to 10.



**Moving Average period** = 34

**MA shift** = 0.

**MA method:** = Exponential.

|                         |                 |
|-------------------------|-----------------|
| MA shift                | 0               |
| MA method: >            | Exponential     |
| Applied price the MA: > | Simple          |
| Step Parabolic SAR      | Exponential     |
| Maximum Parabolic SAR   | Smoothed        |
|                         | Linear weighted |

**Applied price:** - choosing price to calculate the moving average.

|                              |                |
|------------------------------|----------------|
| MA method: >                 | Exponential    |
| Applied price the MA: >      | Close price    |
| Step Parabolic SAR           | Close price    |
| Maximum Parabolic SAR        | Open price     |
|                              | High price     |
|                              | Low price      |
|                              | Median price   |
|                              | Typical price  |
|                              | Weighted price |
| 3. OTHER SETTINGS            |                |
| Sound alerts modified orders |                |

**Step Parabolic SAR** = 0.02.

**Maximum Parabolic SAR** = 0.2.

### Block 3. OTHER SETTINGS

**Sound alerts modified orders** = true - sound signals are allowed, if false, the sound is turned off.

**Language:** – switch the language on the info panel can be Russian or English.

|                              |         |
|------------------------------|---------|
| Sound alerts modified orders | true    |
| Language: >                  | English |
| Background: >                | English |
|                              | Russian |
| Show info messages           | true    |

**Background:** = Dark1 - selects the color background of the chart Dark1 or Dark2 and Light.

|                                 |         |
|---------------------------------|---------|
| 123 Language: >                 | English |
| 123 Background: >               | Light   |
| Show info messages              | Light   |
| Show hot buttons                | Dark1   |
| Deleting objects from the chart | false   |

Load

**Show info messages** = true - displays textual information about the financial status of the account and currently active commands on the chart, if false, it does not show messages.

**Show hot buttons** = true - yes, show, false - no, do not show, "hot buttons" in the strategy tester do not work!

**Deleting objects from the chart** = true - allow clearing the chart from unnecessary graphical objects (modifications of stop loss levels, take profit, etc.).

**Delete objects, in minutes** = 120 - clears the chart from unnecessary graphical objects (arrows, modified stop-loss and take-profit levels, etc.) in a certain period of time set in minutes (120) passed from the moment, when an object is created.

[www.taranus.ru](http://www.taranus.ru)

2021