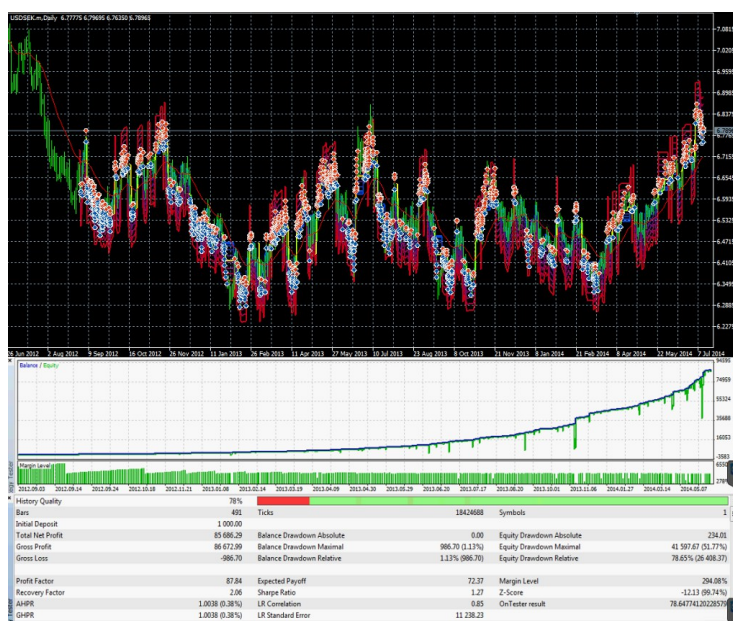


Instruction for GRID HARVESTER v3

v1.00



1. GENERAL SETTINGS

<input type="checkbox"/> Magic Number	20131002
<input type="checkbox"/> Load save point (resume trading after terminal restart)	[ON]
<input type="checkbox"/> Use [%] of total balance (requires more funds)	100% (x1)
<input type="checkbox"/> Override insufficient fund lock (use at your own risk)	false
<input type="checkbox"/> Remove equity protection (more DD instead of SL)	false
<input type="checkbox"/> -----	- - -
<input type="checkbox"/> Account CUR	USD
<input type="checkbox"/> CUR/USD ratio	1.36

1.1 Magic Number

Setting up the custom magic number. Change that number to use multiple save states (each save-state is for custom Magic Number).

1.2 Load save point (resume trading after terminal restart)

Loading save state after crash or terminal restart.

WARNING: Turn [OFF] and restart when you closed the positions manually! (by "X")

WARNING: disable that option for MT4 back-testing.

1.3 Use [%] of total balance (requires more funds)

Use only part of the balance.

WARNING: Requires more funds. If money management balance is 500 usd and this option is 25%, then you need 2000 USD ($500 / 25\% = 2000$) minimum on your account of which only 500usd (25%) will be used.

1.4 Override insufficient fund lock (use at your own risk).

Overrides the preset minimum balance.

EXAMPLE: if mm balance is set to 500 USD and you have 300 USD, trading will not start unless this option is enabled.

WARNING: Option increases the risk of pattern failure.

1.5 Remove equity protection (more DD instead of SL)

Removes equity protection in case of using option (1.3).

EXAMPLE: Normally when you have 1000 USD and 500 USD (50%) is used in 1.3, the stop loss will be at 500 USD. If you set 1.5 option to TRUE, then the trade will go below 500 USD with larger draw-down, but endangering whole equity.

1.6 Account CUR.

Account currency – set to USD in case of dollar account or “Other currency” in combination with option 1.7

1.7 CUR/USD ratio

Ratio between your account's currency and US DOLLAR.

EXAMPLE 1: If your currency is EUR then you use EUR/USD value (for example 1.36)

EXAMPLE 2: If your currency is PLN, but the pair has USD in first place – USD/PLN (f. e. 3.12) then you need to divide using calculator $1 / 3.12 = 0.32$. “0.32” is the value you put in this field.

2. START PRICE

<input type="checkbox"/> _____ Start Price _____	____ Start Price ____
<input type="checkbox"/> Start trading price min and max enabled	false
<input type="checkbox"/> Trade only when higher than	0.0
<input type="checkbox"/> Trade only if lower than	0.0
<input type="checkbox"/> Stop trading price	false
<input type="checkbox"/> Trade only when higher than	0.0
<input type="checkbox"/> - - - - -	

2.1 Start trading price min and max enabled

Enable or disable range of trading.

2.2 Trade only when higher than

Maximum price to open new trades

2.3 Trade only if lower than

Minimum trade price to open new trades

2.4 Stop trading price

The EA will be stopped out - new trades will not be opened when the price is reached. EA requires restart to start trading again

2.5 Value of the price stop out

EXAMPLE 1: If trading started at 155.00 and the value is 165.00 the EA will stop trading after reaching 165.00

EXAMPLE 2: If trading started at 155.00 and the value is 145, the EA will stop after dropping to 145.00

3. LOT AND PROFIT

<input type="checkbox"/> _____ Lot and Take Profit _____	___ Lot and Take Profit ___
<input type="checkbox"/> Lot size	0.01
<input type="checkbox"/> Automatic non-micro account lot and Money Management m...	false
<input type="checkbox"/> Profit in pips per position	43.0
<input type="checkbox"/> point of profit increase per position opened	0.9
<input type="checkbox"/> point of profit increase per lot opened	0.0
<input type="checkbox"/> - - - - -	

3.1 Lot size

Base size of the first positions. This position may get increased by money management mathematics. Disable the MM to use that lot size only

3.2 Automatic non-micro account.

If turned to TRUE, the lot size will be automatically increased to 0.1 if the minimum lot of the account is like that. Also the money management balance will be raised by 10x in this case – because of that if you have not enough funds to handle that change the trade will not start.

EXAMPLE: the lot size is 0.01 and MM BALANCE is 500 USD, but you turned this option on and you have 0.1 lot account. Then the lot size will be changed to 0.1 and mm balance to 5000 USD, therefore if you dont have 5000 USD the trade will not start and inform you that you dont have enough funds to use current pre-set

3.3 Profit in pips per position

Profit in means of pip distance from the average position open (all positions are summed up into 1 and the distance vale above/below it, is set by this option)

3.4 Point of profit increase per position opened

Increase “Profit” by value with each position opened.

EXAMPLE: if “Profit” value is 43 and this option is 1. When there is only 1 position the TP is 43, then there are 4 positions opened the “Profit” will be 47.

3.5 Point of profit icrease per lot opened.

Increase “Profit” by lots opened. The same option as 3.4 but with regards to how much the original position size is increased.

EXAMPLE: the same situation as in 3.4, but let's say the position 3 and 4 has x2 lot multiplier (so pos1 – 0.01 lot, pos2 – 0.01 lot, pos3 – 0.02 lot, pos4 – 0.02 lot), then with 4 opened positions the “Profit” will be 49 (43 + 1 + 1 + 2 + 2)

4. GRID SCALE

<input type="checkbox"/>	Grid Scale	Grid Scale
<input type="checkbox"/>	Scale of the grid (1-no scale)	0.99
<input type="checkbox"/>	Bitcoin scale of the grid	false
<input type="checkbox"/>	Bitcoin scale base balance	250.0
<input type="checkbox"/>	How many weeks to check for max price	50
<input type="checkbox"/>	Bitcoin scale of lot size (greater max course => bigger lot)	false
<input type="checkbox"/>	Scale also the profit factor	false
<input type="checkbox"/>	- - - - -	

4.1 Scale of the grid (1- no scale)

Scale the grid by value.

EXAMPLE: The grid positions are pos1 – 0, pos2 – 20, pos3 – 45, pos4 – 80

With scale x0.5 they will practically be – pos1 – 0, pos2 – 10, pos3 – 22.5, pos4 – 40

With scale x1.5 they will be – pos1 – 0, pos2 – 30, pos3 – 67.5, pos4 – 120

WARNING: this option (with mm balance) should be optimized for easy preset adjusting (using one preset on other chart)

4.2 Bitcoin scale of the grid

Scale entire grid if the maximum price is increased (not useful on FOREX, more useful with currency pairs like BTC/USD)

4.3 Bitcoin scale base balance

Base balance of the scale.

4.4 How many weeks to check for max price

How many weeks in the past to check for maximum price.

EXAMPLE: Bitcoin price is now 600 USD, the 4.3 is 500 USD, 4.4 is 50. The EA will check last year (52 weeks) for the maximum price and that is 1150. The scale will be then

$1150 / 500 = 2.3$. If lets say the price rise to 1500 USD, the scale will be $1500 / 500 = 3.00$ (more wide grid as price has increased). If it drops again to for example 800 USD the factor will still be 3.00 (as MAXIMUM of last 52 weeks is counted).

USAGE: Use this in case of for example back-testing the EA on long history with much different maximum price. The price of Bitcoin raised from few dollars to above 1000 in less than 2 years, so it is useful with currencies that have such range of prices.

4.5 Bitcoin scale of lot size (EXPERIMENTAL)

scales also the lot size

4.6 Scale also the profit factor

scales also the profit by the bitcoin scale factor.

5. TRAILING STEP

<input type="checkbox"/> _____ Trailing Step _____	___ Trailing Step ___
<input type="checkbox"/> Trailing Step (0 off, 1 on)	false
<input type="checkbox"/> Trailing Step Percentage	70.0
<input type="checkbox"/> Minimum basked size fr TS activation	6

5.1 Trailing Step

Enable the trailing step

5.2 Trailing step percentage

Percentage of trailing step to close the trade.

EXAMPLE 1: if the "Profit" 43 is reached (maximum) and then the course of the pair goes the other way the profit will be taken after dropping to 30.1 pips ($43 \times 70\% = 30.1$)

EXAMPLE 2: if the "Profit" 43 is reached, the course goes to 50 pips (maximum) and then it drops, the take profit will be stopped at 35 pips ($50 \times 70\% = 35.0$)

EXAMPLE 3: if the "Profit" 43 is reached, the course goes to 100 pips and then it drops by 30%, the take profit will be stopped ad 70 pips ($100 \times 70\% = 70.0$)

5.3 Minimum basket size dot TS activation

minimum basket size for trailing step to work – if set to 6 it means that 6 positions has to be opened for the trailing step to do its work. If less than 6 positions are opened the positions will be closed at "Profit" value

6. MONEY MANAGEMENT

<input type="checkbox"/>	Money Management	Money Management
<input type="checkbox"/>	Money management activated	true
<input type="checkbox"/>	Money management base ballance	1700.0

6.1 Money management activated

If set to true money management is activated (the base lot size may be increased if there are more funds than in the 6.2 point)

6.2 Money management base balance

Base balance of the money management function.

EXAMPLE 1: If set to 1700 and there are 5500 USD on the account, the multiplier will be $5500 / 1700 = 3.23 = \sim x3$ (so if base lot is 0.01 the lot of the first position will be 0.03)

EXAMPLE 2: If set to 1700 and there are 500 USD on the account, the trade will not start. The funds of the account has to be at least 1700 usd to start trading for built-in preset.

7. GRAPHICS

<input type="checkbox"/> _____ Graphics _____	___ Graphics ___
<input type="checkbox"/> Enable Graphics	true
<input type="checkbox"/> Line size	2
<input type="checkbox"/> Fast Mode (Enable for optimization); also disables GFX	false
<input type="checkbox"/> GFX Speed Up mode (no DD calculations)	false
<input type="checkbox"/> Draw buy or sell lines while positions closed	Buy mode
<input type="checkbox"/> - WARNING: Optimize with FAST MODE ON!! -	

7.1 Enable Graphics

If true the graphics will be enabled

7.2 Line size

Line thickness that is used for drawing graphics

7.3 Fast Mode

Fast mode for non-visual or non-graphical back-testing and optimization.

WARNING!!! SET TO TRUE always when optimizing or backtesting (unless you are doing visual back-test). If the option is set to FALSE the optimization and back-testing are VERY slow.

7.4 GFX Speed Up mode

Disables draw-dawn calculations to speed-up process a little. (use in visual back-test when you don't need additional information)

7.5 Draw buy or sell lines while positions closed

Useful for manual trading – if you want the grid to be drawn even when the positions are not opened (set to buy or sell mode)

WARNING! Use FAST MODE for optimization especially with MQL5 cloud – not turning that option to TRUE may cost you a lot. Without the cloud you are just wasting your time.

Always turn FAST MODE to TRUE while testing/optimizing!

8. ATR

<input type="checkbox"/> _____ Atr _____	__ Atr __
<input type="checkbox"/> Enable ATR for scale of the grid	false
<input type="checkbox"/> ATR Period	10
<input type="checkbox"/> ATR Timeframe	8 Hours
<input type="checkbox"/> ATR normal	1.0

8.1 Enable ATR for scale of the grid

Enable the ATR scaling option.

8.2 ATR Period

The ATR period for scale factor

8.3 ATR Timeframe

Timeframe for ATR

8.4 ATR Normal

Base ATR.

EXAMPLE: if Base ATR is 2.0 and ATR is 0.5, then the ATR scale factor will be x0.25,

EXAMPLE: if Base ATR is 2.0 and ATR is 2.5 then the ATR scale factor will be x1.25

9. GRID

<input type="checkbox"/> _____ Grid _____	___ Grid ___
<input type="checkbox"/> Opening grids positions relative to.. (when grid scaled)	Relative to first (more t...
<input type="checkbox"/> Lots same size as 01	false
<input type="checkbox"/> Number of positions (max. 20)	10
<input type="checkbox"/> Lot 01 multiplier	1
<input type="checkbox"/> Lot 02 pip distance	18
<input type="checkbox"/> Lot 02 multiplier	1

9.1 Opening positions relative to...

System of opening the positions in case of ATR/ADX scale

EXAMPLE: pos1 – 0, pos2 – 18, pos3 – 45, pos4 – 80. If first and second position were opened and distance scaled (let's say by ATR) by 0.5 then pos1 – 0, pos2 – 9. After that position ATR has increased so the scale is 1.0.

If set “Relative to first”: ATR scale = 1.0 therefore pos3 will be at 45 pips (45×1.0)

If set “Relative to previous”: ATR scale 1.0 therefore pos3 will be at 36 pips (normally distance between pos3 and pos2 = $45 - 18 = 27$; pos2 was opened at 9 pips, so $9 + (27 \times 1.00) = 27$).

9.2 Lot same size as 01

Option to make all positions same lot size as first position

9.3 Number of positions

Number of grid positions – max 20 in full version and 4 in free version.

9.4 Lot 01 multiplier

Multiplier of first position

9.5 Lot XX pip distance

Pips distance from the first position.

9.6 Lot XX multiplier

Lot multiplier of the base lot of this position.

10. STOP OUT

<input type="checkbox"/> _____ Stop Out _____	___ Stop Out ___
<input type="checkbox"/> Position stop Loss on	false
<input type="checkbox"/> Stop Loss at grid position (2-20) - fixed	20
<input type="checkbox"/> Stop Loss by currency	false
<input type="checkbox"/> Use of account funds (in currency), then stop loss	100
<input type="checkbox"/> Stop Loss at equity percentage (0-99), 0 for off	0.0
<input type="checkbox"/> Block trading after Stop Out (script will be stopped if TRUE)	true

10.1 Position stop Loss on

Enables the position - SL function. One of the grid positions may be used as a stop loss by this option

10.2 Stop Loss at grid position (2-20)

Stop loss at selected grid position

10.3 Stop Loss by currency

Enable option to Stop Loss by currency.

10.4 Use of account funds

Use account funds. If set to 100 when Balance-equity > 100, then stop loss is performed.

10.5 Stop Loss at equity percentage

Percentage of account left to use stop loss. If set to 50% when Equity <= Balance * 50% the stop loss is performed. Optimize with that option set to desired draw-down.

EXAMPLE: while back-testing you want to have 80% draw-down not more, then you set this option to 20.0 [%].

10.6 Block trading after Stop Out

Stop out the EA if any of the Stop Loss occurs (requires the restart of the EA to open next trade)

11. AUTOMATED MODULES

<input type="checkbox"/> Automated Trading Mode [ALPHA] ...	Automated Trading M
<input type="checkbox"/> ---	These are RAW settings. Y
<input type="checkbox"/> Automated module [Alpha]	[OFF]
<input type="checkbox"/> ---	[OFF]
<input type="checkbox"/> MA crossovers ON/OFF	[ON - MA trend detection
<input type="checkbox"/> ---	[ON - Oscilation around I

10.1 Automated module

[OFF] – disable the automated modules

[ON – MA trend detection] – the MA crossover trend detection (highly experimental)

[ON – Oscillation around MA] – the oscillation mode around selected moving average

WARNING: If using any of the AUTOMATED MODES manual mode has to be disabled!

12. MA trend detection

Module is highly experimental – use it at your own risk

13. MA OSCILLATION automated module

<input type="checkbox"/> ---	--- MA oscillation ---
<input type="checkbox"/> Oscillation Moving Average Period	1 Day
<input type="checkbox"/> Oscillation Fast Moving Average	18
<input type="checkbox"/> Oscillation Fast Moving Average Mode	Exponential
<input type="checkbox"/> Open trade in distance from MA (pips) 0-xxx	5.0
<input type="checkbox"/> Close trades in distance from MA (pips) - less than above (-+)	0.0
<input checked="" type="checkbox"/> 08 --- ADX Scale ---	--- ADX Scale ---
<input type="checkbox"/> Scale ADX for Oscillation mode On/Off	false
<input type="checkbox"/> Scale ADX Number	14
<input type="checkbox"/> Scale ADX Timeframe	1 Day
<input type="checkbox"/> ADX Value => x SET1 scale	20.0
<input type="checkbox"/> x SET1 scale (default x2.0)	2.0
<input type="checkbox"/> ADX Value -> x SET2 scale	50.0
<input type="checkbox"/> x SET2 scale (default x3.0)	3.0

13.1 Oscillation Moving Average Period

Time-frame of the Moving Average.

13.2 Oscillation Moving Average

Value of the MA.

13.3 Oscillation Moving Average Mode

Mode of the MA.

13.4 Open trade in distance from MA (in pips)

Open the first trade if distance from MA greater than this value.

EXAMPLE: MA is at 1.34 and this value is 100 pips. The first sell position will be opened when course reaches 1.35. (and the same is with buy positions just below the MA)

13.5 Close trades in distance from MA (in pips)

Close positions at distance from MA even if "Profit" factor is not met.

EXAMPLE 1: if set to 0 then all positions will be closed while crossing MA - 1.34, even if "profit" factor is not met

EXAMPLE 2: if set to -50 then all sell positions will be closed at 1.34-50pips = 1.335.

EXAMPLE 3: if set to 50 then all sell positions will be closed at 1.34+50pips = 1.345.

13.6 ADX Scale

Enable ADX scale of the grid (can be used also without MA oscillation)

13.7 Scale ADX Number

Value of the ADX

13.8 Scale ADX Time-frame

Time-frame of the ADX.

13.9 ADX Value => x SET1 scale

ADX value for lowest ADX scale

13.10 x SET1 scale

ADX scale factor for lowest ADX value

13.11 ADX Value => x SET2 scale

ADX value for highest ADX scale

13.12 x SET2 scale

ADX scale factor for highest ADX value

EXAMPLE:

ADXvalue1 = 20, xSET1 = 2.0, ADXvalue2 = 50, xSET2 = 3.0

if ADX = 10, then ADX scale = 2.0 (below lowest)

if ADX = 20, then ADX scale = 2.0 (lowest)

if ADX = 35, then ADX scale = 2.5 (middle between lowest and highest)

if ADX = 50, then ADX scale = 3.0 (highest)

if ADX = 70, then ADX scale = 3.0 (above highest)

14. PRESETS

14.1 The default preset is for GBP/JPY uptrend. Preset will work as long as the uptrend will continue with not greater draw-down than in 2012.06-2013.12

You can download more presets form my profile:

<https://login.mql5.com/en/users/angreeee>

Example of the external preset:



or from the comments tab of the product (full version)

REMEBER that the presets are set for the past conditions – it does not mean they will not fail in the future so manage the risk properly.

14. 2 Have a plan

I advice plans like: (example)

First phase

Risking 100% of the equity (lets say 170 USD on CENT Robofores account)

Second phase

if the equity gets doubled (340 USD) you set the **(1.3)** option (use percent of the account) to 50%

That way as soon as you will enter second phase you will get risk-free profit. Even if the preset fails you still get half of the equity which will be greater than the initial investment. (let's say preset fails at 400 USD – you still get 200 USD, so from phase 2. you have risk-free profit, as your original investment+bonus are safe)

You can use few presets on one accounts, but you have to disable all stop-losses based on percentage of the account **(1.5 10.4 10.5)** and set up position stop-losses. **(10.1 10.2)** Or manage stop losses manually.

14.3 MT4 and MT5 compatilibility

All presets can be copied 1 to 1 from MT5 to MT4 and the other way around. The only differences may be with ADX/ATR factors as they return slightly different values in mt4/mt5, so copy that presets with caution. Also ADX/ATR presets may be more profitable, but they also hold greater risks as same draw-dawns as in the past may still fail in the future, as ADX/ATR grids are dynamic. **All others presets (that dont use ADX or ATR) are 100% compatible.**