

## Quick Pips EA for MT4

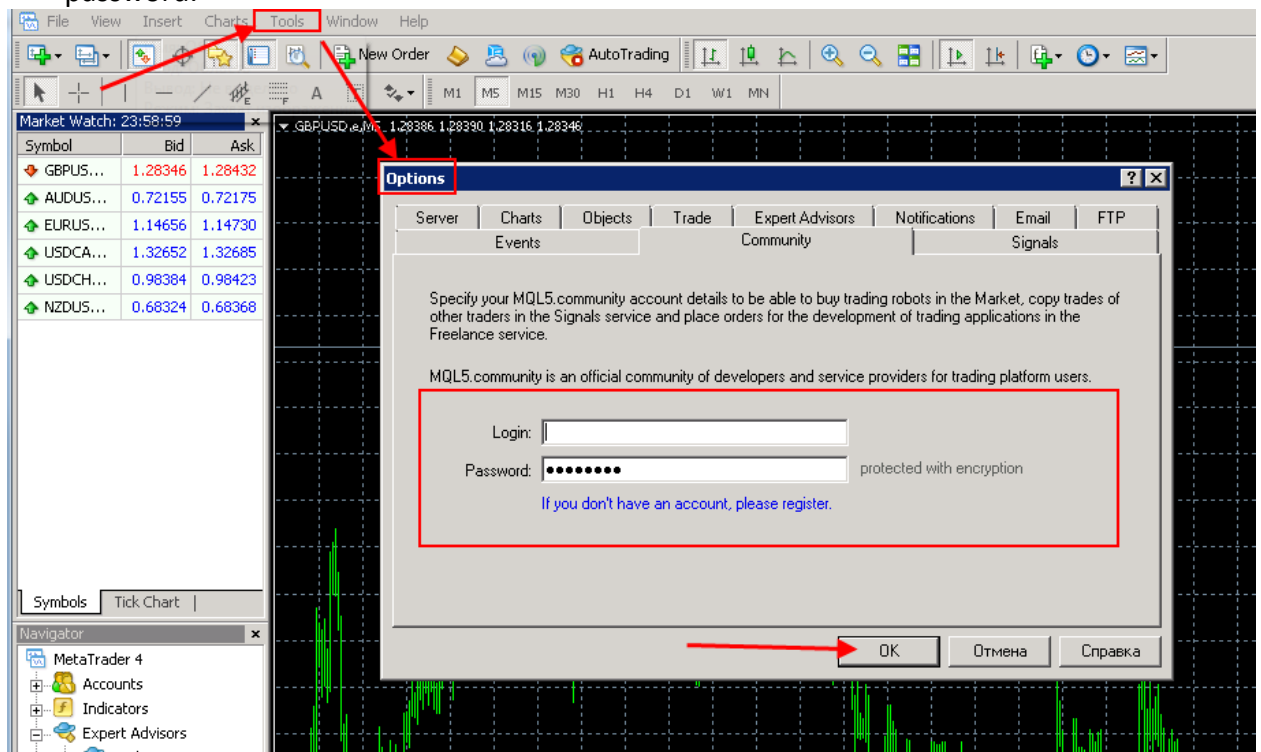
### Instructions for installing an expert and FAQ

Professional tool for intraday trading with the trend.

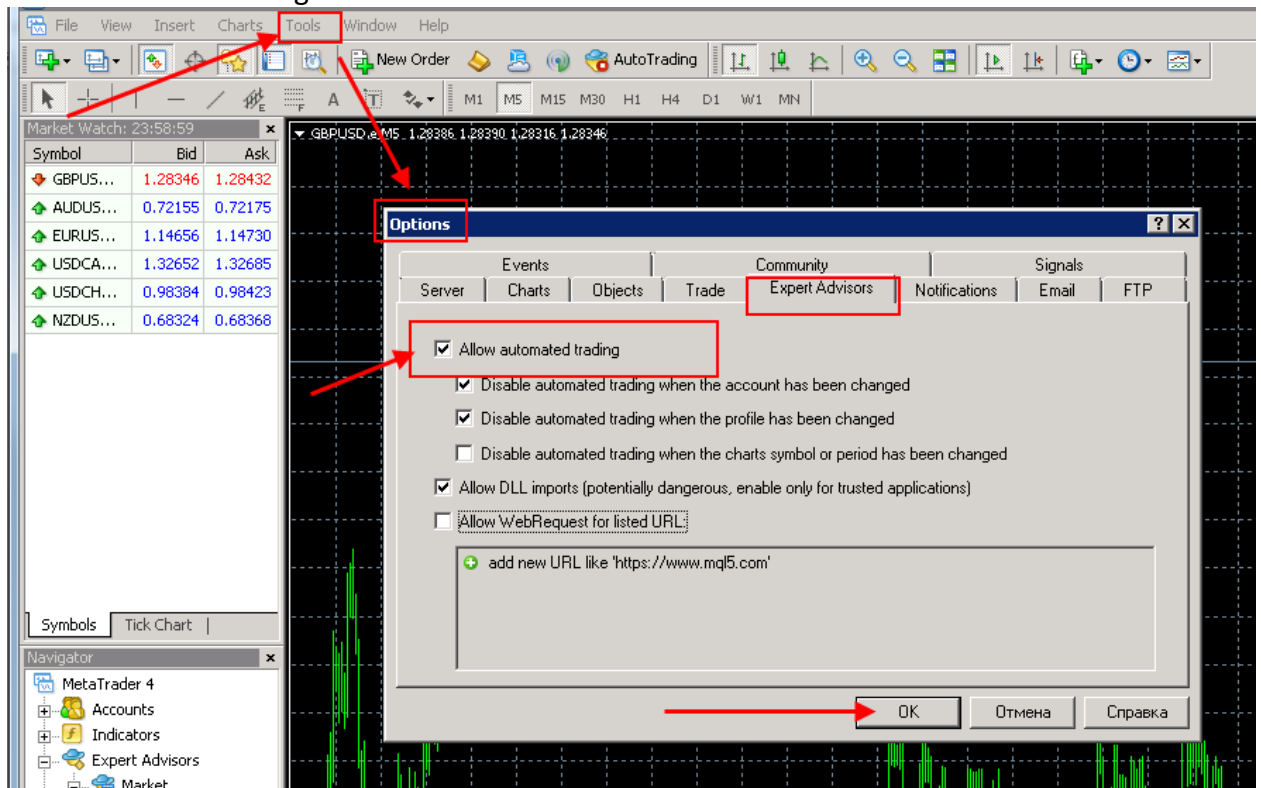
- □ Fully automated trading system.
- □ Quick Pips uses adaptive Stop Loss and Take Profit.
- □ Long term EA and reliability.
- □ Two trading modes with all costs per broker (commission, spread, min. Profit). (Standart, Turbo)
- □ Currency pairs: EUR / GBP, EUR / CHF, GBP / CHF, USD / SGD .

- 
- Low latency VPS server (ping less than 50ms).
  - ECN-broker with a low spread (20 points and below) and a swap for the Major. I recommend broker [ICMarkets LTD](#) . Return the spread from me.
  - Low level of stops.
  - Leverage is 1:400 or 1:500.
  - Equity size of \$100 for each currency pair.
-

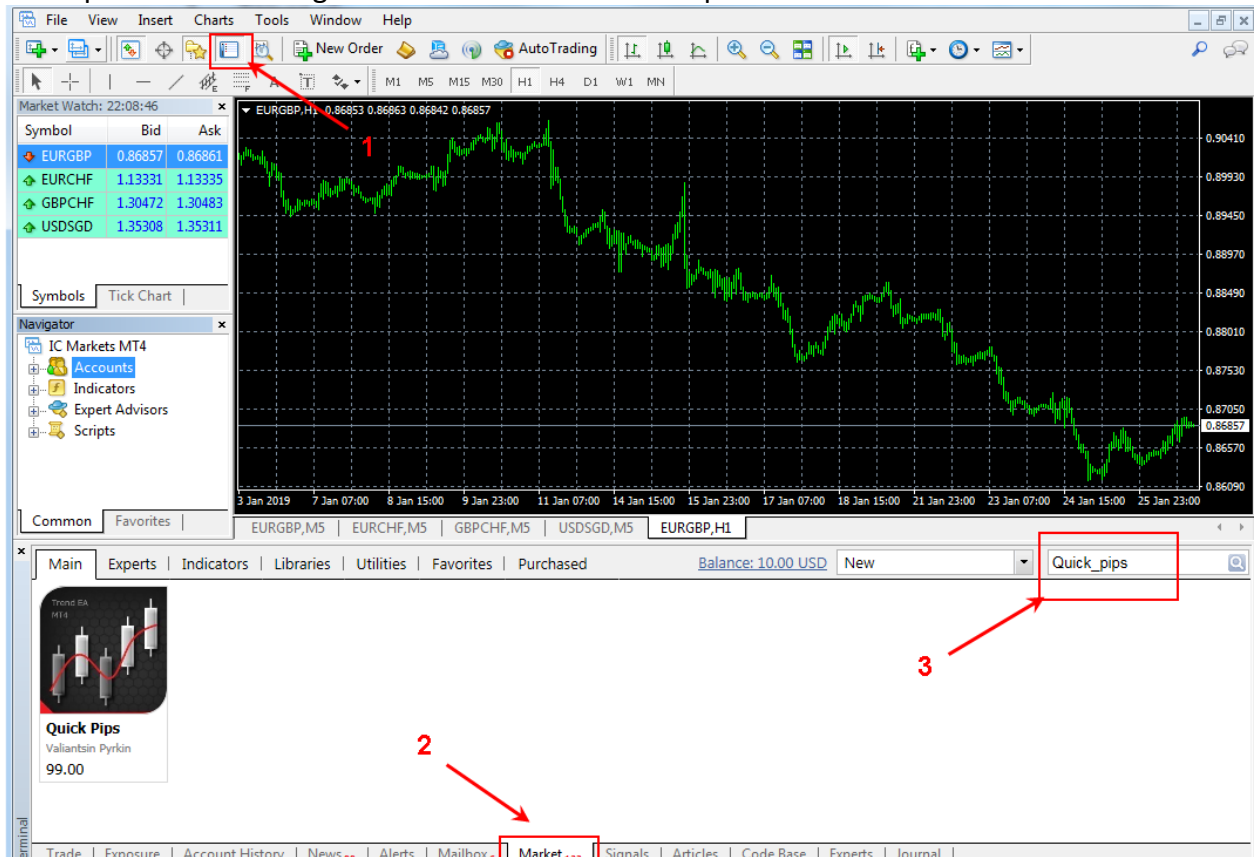
1. Start the terminal MT4.
2. Tools -> Options -> Community or Ctrl+O -> Community. Enter your username and password.



3. Tools -> Options -> Expert Advisors or Ctrl+O -> Expert Advisors. Check the box "Allow automated trading".



- Open the tab "Navigator" or Ctrl+N. Find Quick Pips in the market menu.



- Select all recommended currency pairs. (EUR/GBP, EUR/CHF, GBP/CHF, USD/SGD)
- Download the installation files from the overview page of the EA to a folder on your local computer.

Order Comment: QP (No change)  
 Magic: 77777 Unique number. Do not change this parameter without my consultation. Danger.  
 Start Hour: 00:00  
 End Hour: 02:00  
 Broker's GMT: +2 The time zone of your broker

.Set files (Optimization from 2018.01.01 to 2019.01.01)

[EURGBP s.set](#) | [EURCHF s.set](#) | [GBPCHF s.set](#) | [USDUSD s.set](#)

#### BackTests files

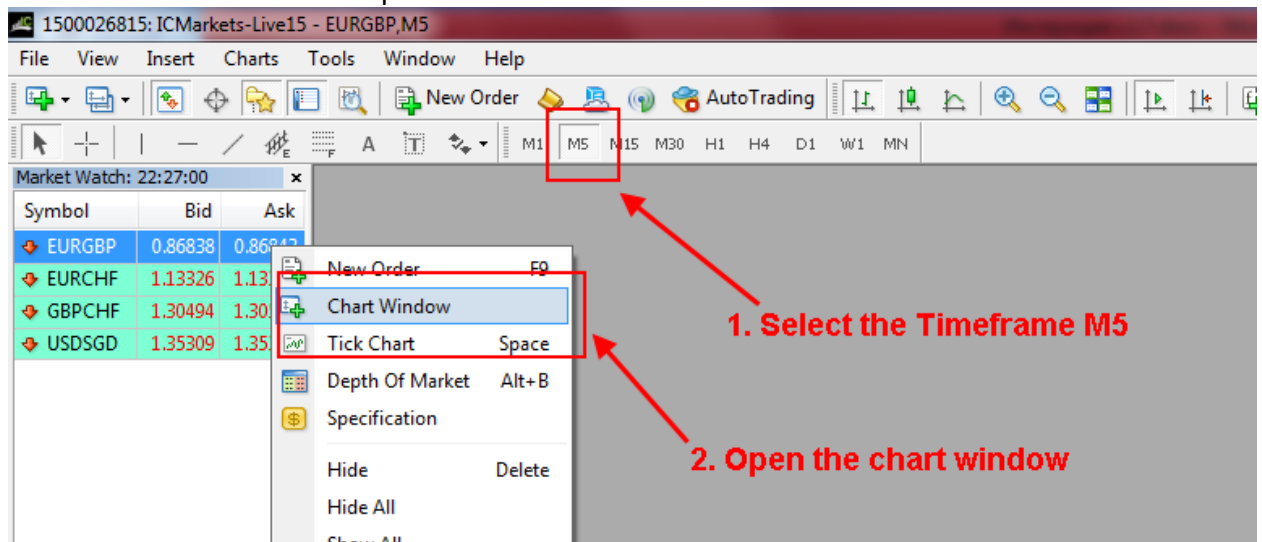
[EURGBP s.zip](#) | [EURCHF s.zip](#) | [GBPCHF s.zip](#) | [USDUSD s.zip](#)

Terminal ▶ BFCE561A6D7136CE5A563D5E59C643B8 ▶ MQL4 ▶ Presets

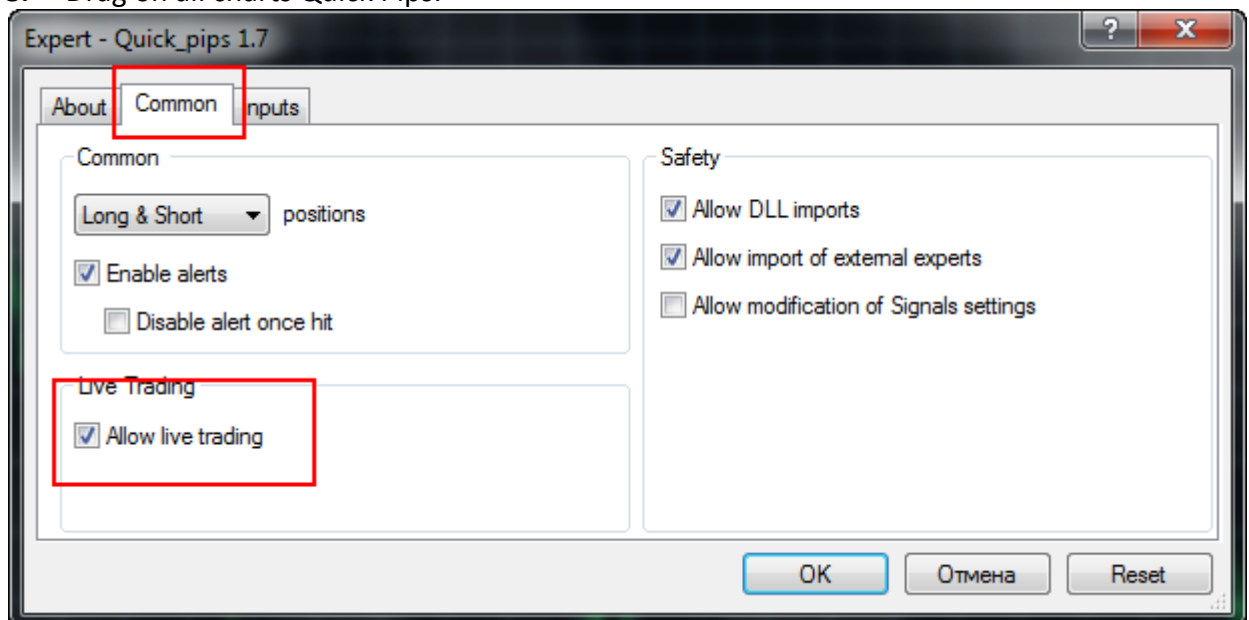
сать на оптический диск Новая папка

Имя	Дата изменения	Тип	Размер
EURCHF_1.set	31.01.2019 21:55	Файл "SET"	4 КБ
EURGBP_1.set	31.01.2019 21:55	Файл "SET"	4 КБ
GBPCHF_1.set	31.01.2019 21:55	Файл "SET"	4 КБ
GBPSGD_1.set	31.01.2019 21:55	Файл "SET"	4 КБ
USDUSD_1.set	31.01.2019 21:55	Файл "SET"	4 КБ

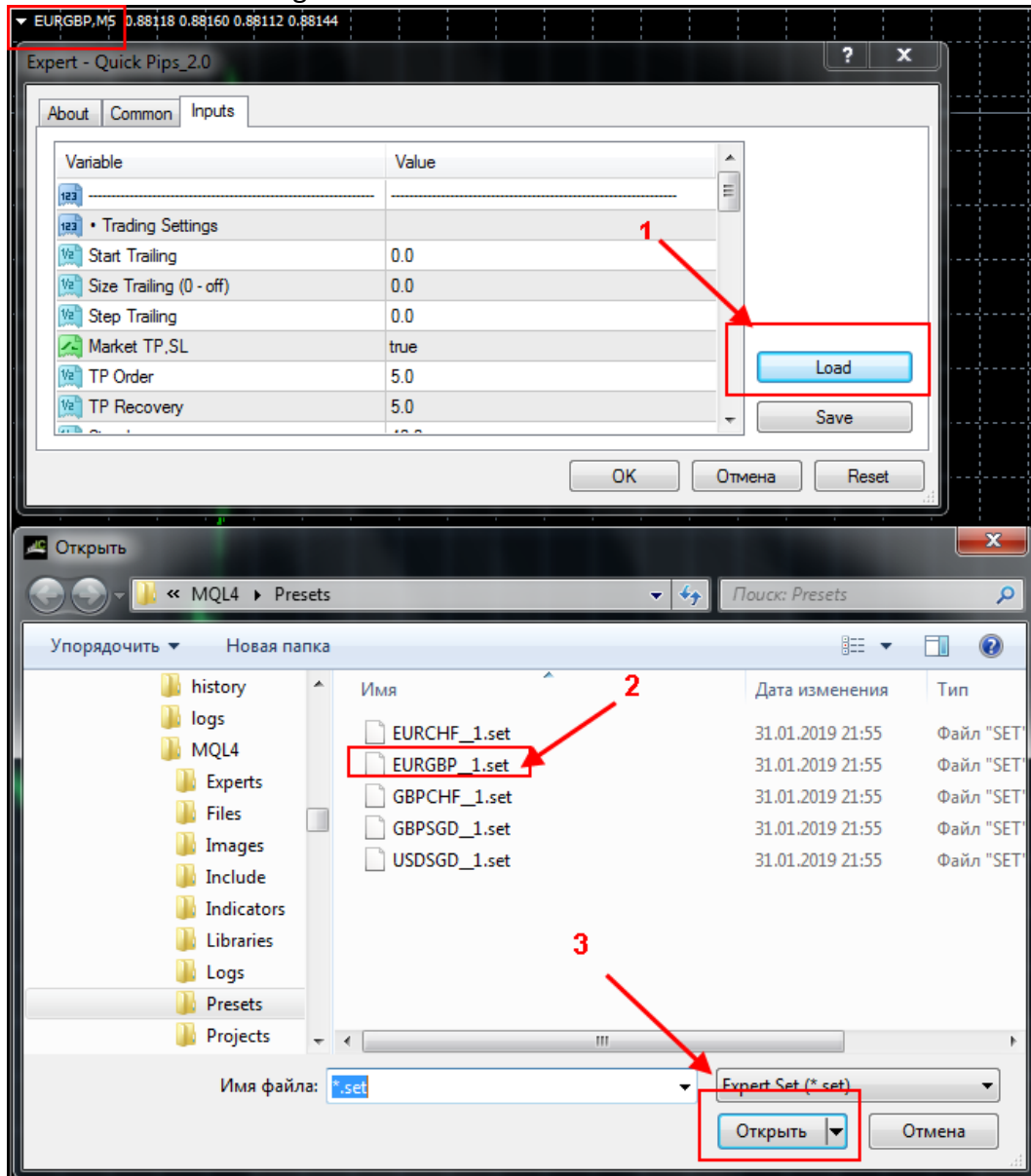
7. Select the Timeframe. Open the chart window



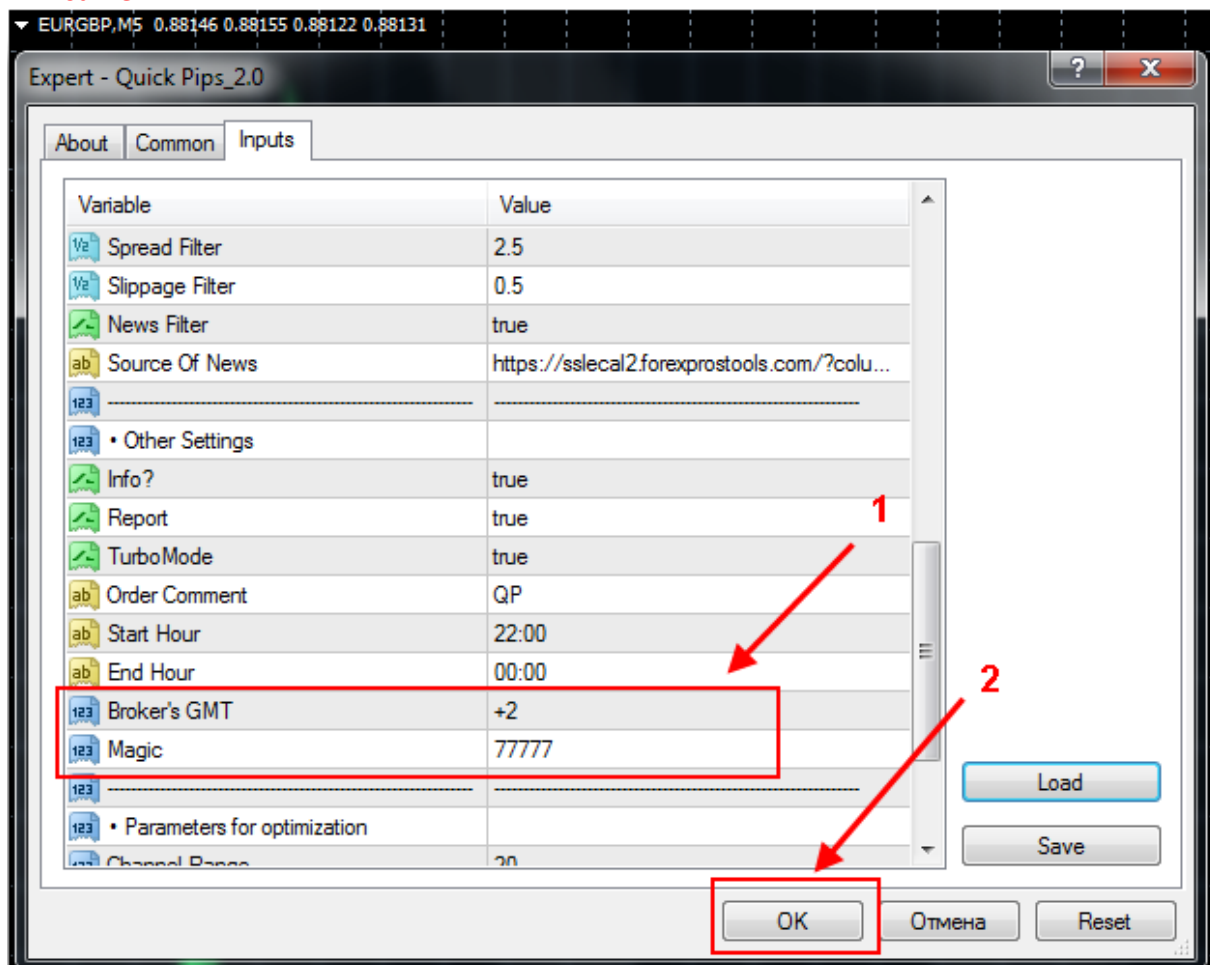
8. Drag on all charts Quick Pips.



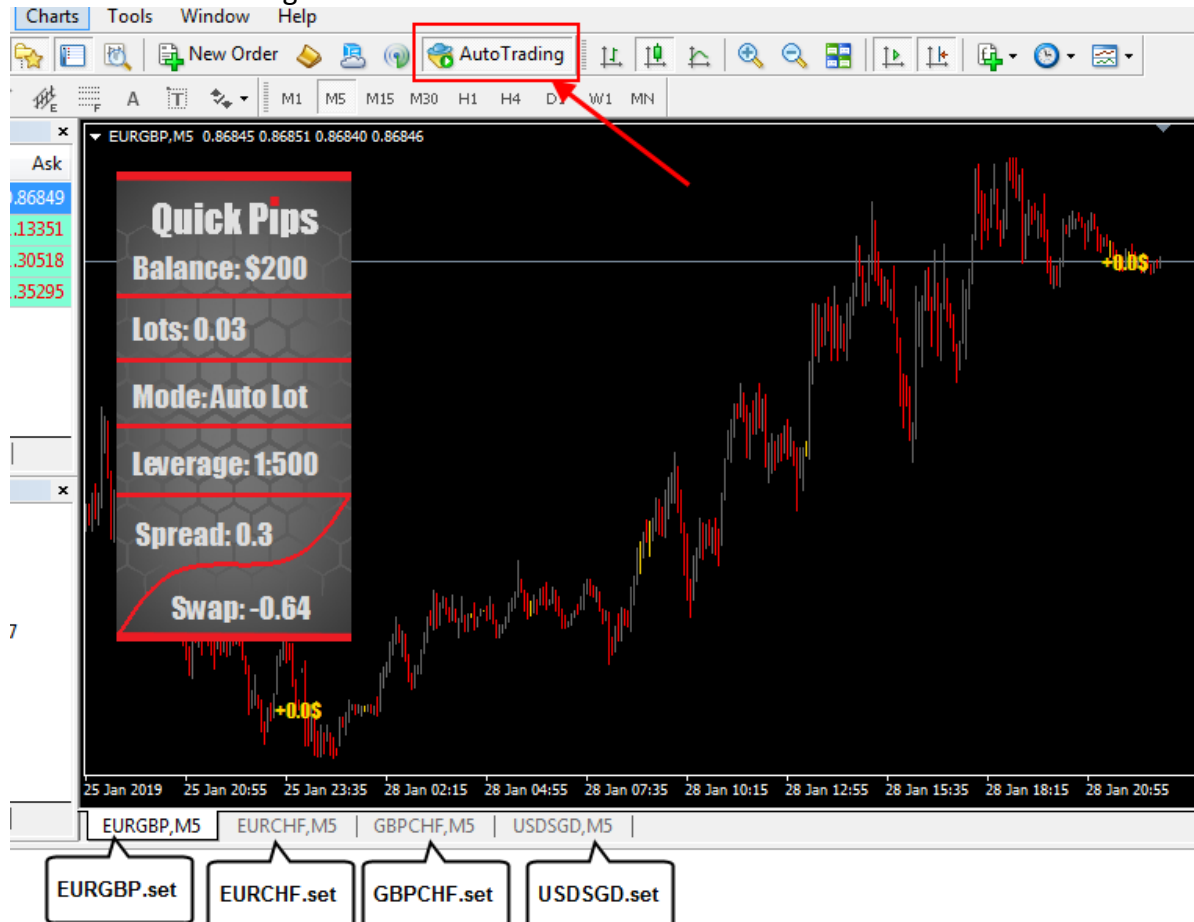
## 9. Load the EA settings



10. Check the Broker's GMT and Magic settings. Attention Magic for all charts should be the same.



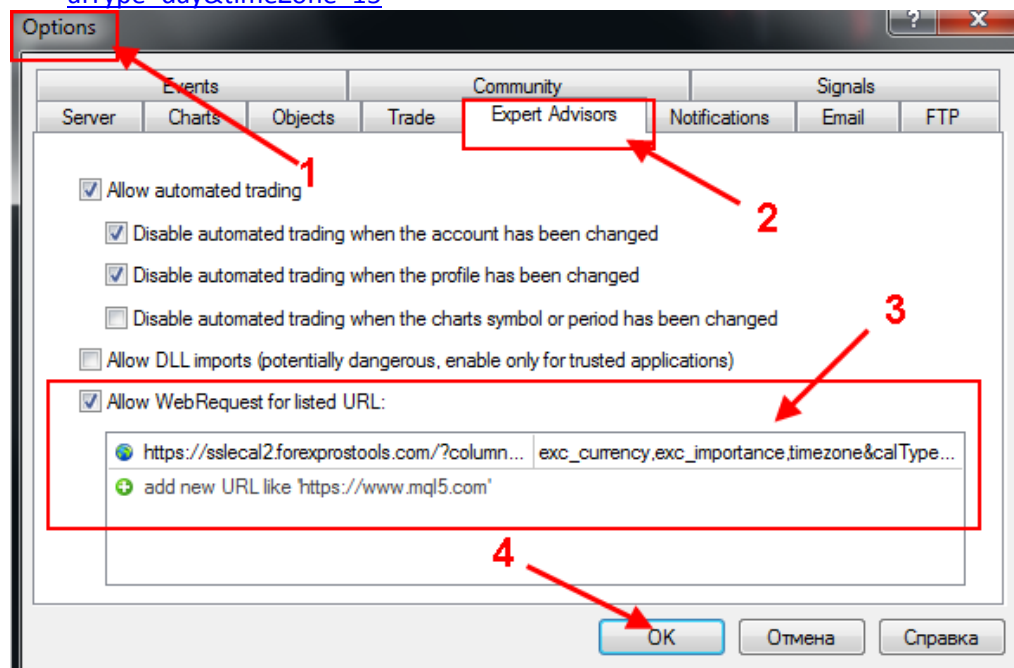
## 11. Start auto trading



## 12. Configure the filter "News". Tools -> Options -> Expert Advisors or Ctrl+O -> Expert Advisors. Allow WebRequest for listed URL:


Insert address:

[https://sslecal2.forexprostools.com/?columns=exc\\_flags,exc\\_currency,exc\\_importance,timezone&calType=day&timeZone=15](https://sslecal2.forexprostools.com/?columns=exc_flags,exc_currency,exc_importance,timezone&calType=day&timeZone=15)



Market / MetaTrader 4 / Experts / Quick Pips ★★★★★

RU [to pocket](#) [complain](#)



**Trend EA MT4**

**99 USD**

Buy: 99 USD

Rent:

For 1 month: 12 USD

For 3 months: 36 USD

For 6 months: 72 USD

Free Demo

Category: [Experts](#)

Activations: 5

Demo downloaded: 346

Author: [Valiantsin Pyrkdn](#)

Published: 17 December 2018

Current version: 2.10

Updated: 1 February 2019

More from author:

[AlgoTradeScalper](#)

★ ★ ★ ★ ★ Reviews: 21

**FREE**

How to buy a trading robot or an indicator

Run your EA on virtual hosting

**Overview** | Reviews (6) | Comments (257) | What's new

### Quick Pips

Professional tool for night trading.

- Fully automated trading system.
- Quick Pips uses adaptive Stop Loss and Take Profit.
- Long term EA and reliability.
- Two trading modes with all costs per broker (commission, spread, min. Profit). (Standart, Turbo)
- Currency pairs: EUR/GBP, EUR/CHF, GBP/CHF, USD/SGD, GBP/SGD.
- Tests of all currency pairs with a spread of 15 points.

Standard options for EUR / GBP M5, GMT +2 ([ICMarkets](#))

If your testing results differ from mine, set the correct GMT of your broker in the EA settings, the GMT option. This means that your broker has a different time zone. I will help you set the right time depending on your broker and thus your results will become like me.

The main advantage of the system is its accurate analysis and support of orders.

- Trade with 98% order processing.
- It has overlocking mode to get a quick income, but with risks.
- Analysis of several TF for accurate entry.
- EA is optimized for any currency pair with excellent results.
- Flexible expert configuration. You can customize EA for your trading style.

EA has 2 trading modes.

- Standart is a long-term method with minimal risk. Recommend
- Turbo - for those who do not like to wait.

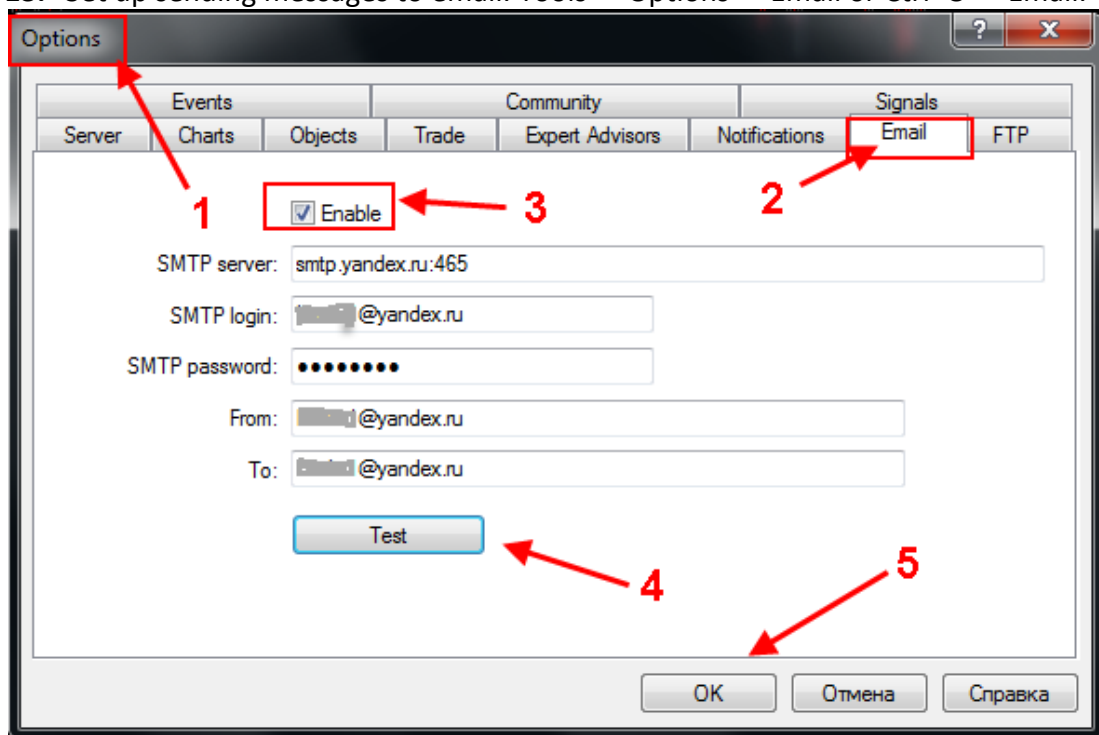
News filter system .

The expert will not be allowed to trade at the exit of important news.

Setting news filter (en):

- Tools -> Options -> Expert Advisors.
- Put a tick in the window "Allow WebRequest for listed URL".
- Insert this link in the window: [https://ssleal2.forexprotools.com/?columns=exc\\_flags,exc\\_currency,exc\\_importance,timezone&calType=day&timeZone=15](https://ssleal2.forexprotools.com/?columns=exc_flags,exc_currency,exc_importance,timezone&calType=day&timeZone=15)
- Click on the ok button
- Set your broker's EA GMT settings.

13. Set up sending messages to email. Tools -> Options -> Email or Ctrl+O -> Email.





The image shows a web form for configuring an SMTP server. It consists of five numbered steps, each with a label and a text input field. Step 1 is 'SMTP server' with the value 'smtp.yandex.ru:465'. Step 2 is 'SMTP login' with a masked email address '@yandex.ru'. Step 3 is 'SMTP password' with a masked password of ten dots. Step 4 is 'From:' with a masked email address '@yandex.ru'. Step 5 is 'To:' with a masked email address '@yandex.ru'. Below the fields is a 'Test' button.

1	SMTP server:	smtp.yandex.ru:465
2	SMTP login:	[masked]@yandex.ru
3	SMTP password:	••••••••••
4	From:	[masked]@yandex.ru
5	To:	[masked]@yandex.ru

Test

**13.1** SMTP server. In this field, use a colon to specify the address of the SMTP server and the port number. List of servers of some popular mail services:

Yandex: smtp.yandex.EN: 465

Mail.ru: smtp.mail.EN: 465

Rambler: smtp.rambler.EN: 465

**13.2** SMTP login. Enter the username from your mailbox;

**13.3** SMTP password. The password to the mailbox;

**13.4** From. Separated by commas, specify the name of the sender and his e-mail. You can enter any name or not at all;

**13.5** To. Specify your mailbox.

Press the Test button.