

Price Action Expert Advisor v2.6 (June 2018)

manual – manual - руководство - 手册

My apologies if there are errors in the translation.

Приносим извинения за ошибки в переводе.

我的道歉如果翻译有错误。

Step 1 – Paso 1 - Шаг 1 - 步骤 1

Check that all the 15 symbols recommended are visible in the market watch.

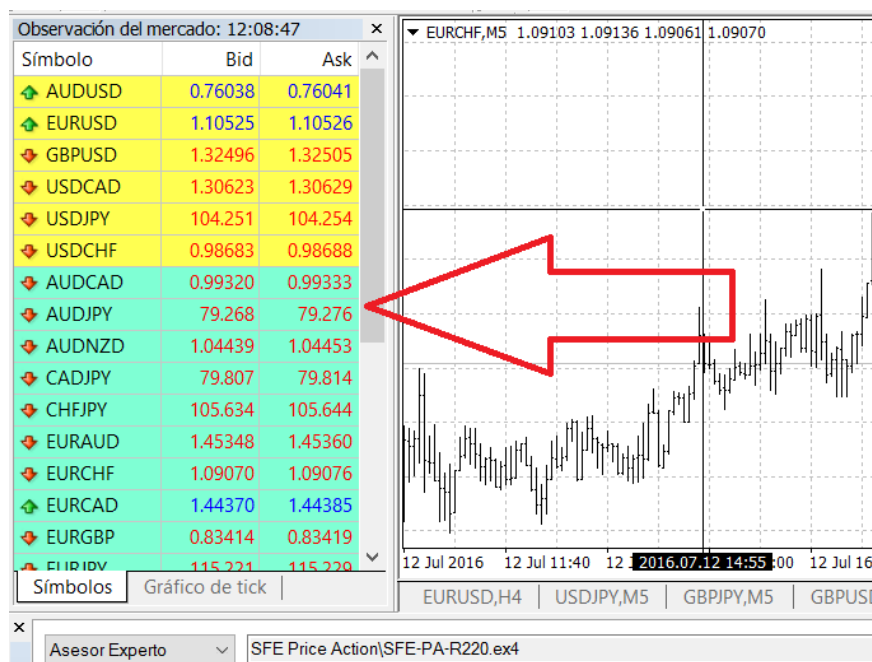
Comprueba que todos los símbolos recomendados estan visibles en el visor del Mercado.

Убедитесь, что все рекомендуемые символы видны в средстве просмотра рынка.

检查所有推荐的符号在“市场”查看器中是否可见。

EURUSD;GBPUSD;USDCHF;USDJPY;AUDUSD;EURGBP;NZDUSD;EURAUD;EURJPY;GBPJPY;
AUDJPY;USDCAD;AUDCAD;EURCAD;XAUUSD;GBPAUD**;GBPCAD**

** new symbols in this version



Price Action Expert Advisor v2.6 (June 2018)

manual – manual - руководство - 手册

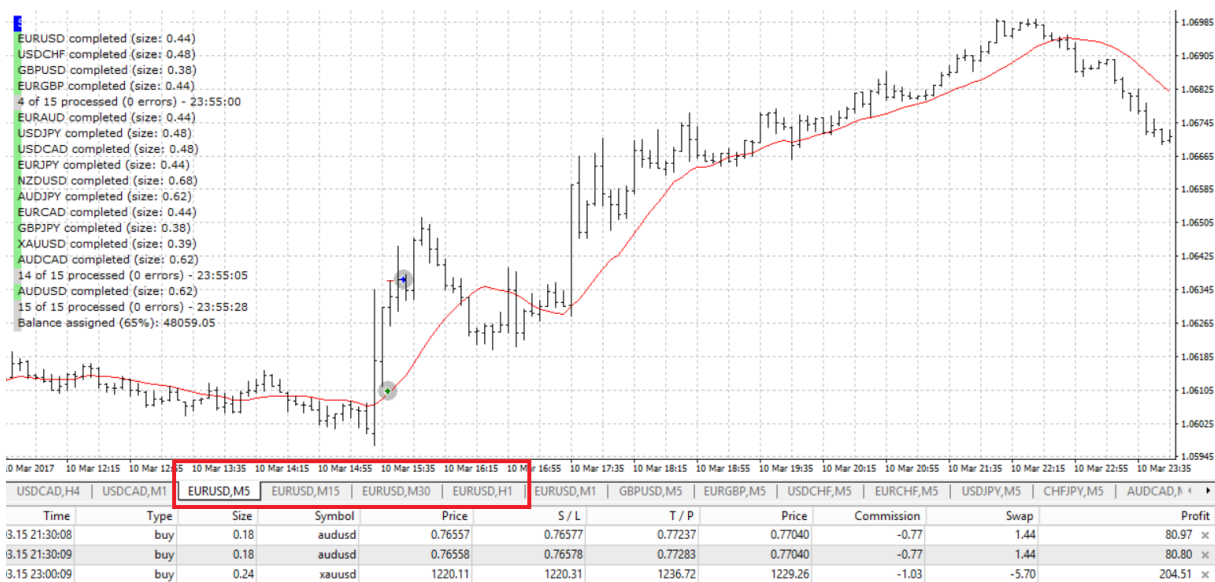
Step 2 – Paso 2 - Шаг 2 - 步骤 2

Open four charts (EURUSD recommended), one for each timeframe (M5, M15, M30, H1) and attach the expert advisor with the configuration described in the next steps.

Abra cuatro gráficos (EURUSD recomendado), uno por cada período de tiempo (M5, M15, M30, H1) y adjunte al asesor experto con la configuración descrita en los pasos siguientes.

Откройте четыре диаграммы (рекомендуется EURUSD), по одному для каждого таймфрейма (M5, M15, M30, H1) и прикрепите советника к конфигурации, описанной в следующих шагах.

打开四个图表（推荐EURUSD），每个时间框架一个（M5, M15, M30, H1），并使用下一步中描述的配置附加专家顾问。



Price Action Expert Advisor v2.6 (June 2018)

Step 3 – Paso 3 - Шаг 3 - 步骤 3

Set the GMT alignment of your broker. Check the GMT offset of your broker (not your VPS) and enter the value between -23 and 23 in the parameter '**Broker_Server_GMT_Winter**'. And put 'yes' or 'no' in the parameter '**Broker_Adapt_GMT_On_DST_Period**', depending if your broker changes the hour of his server in the DST period or not. For example, In the broker ICMarkets, the values are the default, 2 and 'yes'.

Establezca la alineación GMT de su broker. Compruebe el desplazamiento GMT de su broker (no su VPS) e ingrese el valor entre -23 y 23 en el parámetro '**Broker_Server_GMT_Winter**'. Y poner 'sí' o 'no' en el parámetro '**Broker_Adapt_GMT_On_DST_Period**', dependiendo si su broker cambia la hora de su servidor en el período de DST o no. Por ejemplo, en el broker ICMarkets, los valores son los predeterminados, 2 y 'sí'.

Установите выравнивание GMT вашего брокера. Проверьте смещение GMT вашего брокера (а не VPS) и введите значение между -23 и 23 в параметре «**Broker_Server_GMT_Winter**». И поставьте «да» или «нет» в параметре «**Broker_Adapt_GMT_On_DST_Period**», в зависимости от того, изменит ли ваш брокер час своего сервера в периоде летнего времени или нет. Например, в брокере ICMarkets значения являются значениями по умолчанию, 2 и «да».

设置代理的GMT对齐。检查您的代理（不是您的VPS）的GMT偏移，并在参数

“**Broker_Server_GMT_Winter**”中输入-23和23之间的值。并在参数

“**Broker_Adapt_GMT_On_DST_Period**”中设置“yes”或“no”，这取决于您的代理是否在DST期间更改其服务器的小时。例如，在代理ICMarkets中，值是默认值，2和“yes”。

SFE-PA-R230

Variable	Valor	Start	Paso
param_broker	----- BROKER PARAMETERS -----		
p11	Enter the GMT offset of your broker in the winter period (not DST).		
Broker_Server_GMT_Winter	2	2	0
p12	Enter 'yes' if your broker changes the GMT offset, in the DST period.		
Broker_Adapt_GMT_On_DST_Period	yes	yes	yes
p13	Enter the suffix. ONLY if the name of the symbols uses a suffix		

What is IC Markets GMT Offset?

8

To align the daily chart candles with New York close (5pm ET) IC Markets server time and charts are GMT + 2 or GMT + 3 when daylight savings is in effect.

The table below outlines the dates on which the server time is changed to reflect daylight savings each year.

Year Date	DST Commencement Date	DST Ending
2016	13th March	6th November
2017	12th March	5th November

Price Action Expert Advisor v2.6 (June 2018)

manual – manual - руководство - 手册

Step 4 – Paso 4 - Шаг 4 - 步骤 4

If your broker uses a suffix added to the normal symbol names, put the suffix in the parameter '**Broker_Symbols_Suffix_Name**'. If even with this, the names of the symbols in the broker can't be identified, enter the names of all the symbols in order (see the required order), in the parameter '**Special_Symbol_Name**'.

Si su broker utiliza un sufijo añadido a los nombres de símbolos normales, coloque el sufijo en el parámetro '**Broker_Symbols_Suffix_Name**'. Si incluso con esto no se pueden identificar los nombres de los símbolos del corredor, introduzca los nombres de todos los símbolos en orden (véase el orden requerido), en el parámetro '**Special_Symbol_Name**'.

Если ваш брокер использует суффикс, добавленный к обычным именам символов, поставьте суффикс в параметре «**Broker_Symbols_Suffix_Name**». Если даже при этом имена символов в брокере не могут быть идентифицированы, введите имена всех символов по порядку (см. Требуемый порядок) в параметре «**Special_Symbol_Name**».

如果您的代理使用添加到正常符号名称的后缀，请将后缀放在参数

“**Broker_Symbols_Suffix_Name**”中。如果即使这样，也不能识别代理中的符号的名称，则在参数 “**Special_Symbol_Name**”中按顺序输入所有符号的名称（参见所需的顺序）。

p13	Enter the suffix. ONLY if the name of the symbols uses a suffix		
Broker_Symbols_Suffix_Name			
param_size	----- ORDER SIZE PARAMETERS -----		
p21	Select 'yes' if you want to set the size of the trades automatically.		
Autolot_Apply	no	yes	yes
p22	Select the risk level.		
Autolot_Risk_Level	LOW	VERY LOW	VERY LOW
p23	Define the percentage of your account balance to assign (0-100.0).		
Autolot_Balance_Percentage	100.0	100.0	0.0
p24	Enter the size of the order here (used only if Autolot_Apply is not selected).		
p25	Recommended: 0.01 lots / 1.000\$ of balance		
Fixed_Order_Size	0.01	0.1	0.0
param_single_chart	----- SINGLE CHART MODE -----		
p31	If selected, only one chart for each timeframe(M5,M15,M30,H1) must be opened (EURUSD chart is recommended).		
Single_Chart_Mode	yes	yes	yes
p32	The list of pairs traded for each timeframe. You must use the semicolon character (;) to separate the pairs selected.		
p33	The code of the pair is composed by 2 digits. The value of each digit is:		
p34	1.usd 2.eur 3.gbp 4.jpy 5.aud 6.cad 7.chf 8.nzd 9.xau. For example, 21 is EURUSD		
Single_Chart_M5_Pairs	21.51;17.25;31;14;16.23;24.81;54.26;34.91;56		
Single_Chart_M15_Pairs	21.51;17.25;31;14;16.23;24.81;54.26;34.91		
Single_Chart_M30_Pairs	21.51;17.25;31;14;16.23;24.81;54.26;34.91		
Single_Chart_H1_Pairs	21.51;17.25;31;14;16.23;24.81;54.26;34.91		
param_other	----- OTHER PARAMETERS -----		
p41	Define the value of the order comment. Special key words: #period #magic		
Order_Comment	default		
p42	Enter the names of the symbols (only if the expert can't find the symbols, indeed with the usage of the suffix)		
p43	The order of the symbols, separated with semicolon (;) must be:		
p44	EURUSD;GBPUSD;USDCHEF;USDJPY;AUDUSD;EURGBP;NZDUSD;EURAUD;EURJPY;GBPJPY;AUDJPY;USDCAD;AUDCAD;XAUIUSD		
Special_Symbol_Name			

Price Action Expert Advisor v2.6 (June 2018)

manual – manual - руководство - 手册

Step 5 – Paso 5 - Шаг 5 - 步骤 5

By default the lot size will be calculated with automatically, with a low risk level and the 100% of the balance assigned to this robot. If you want to change the risk level, the balance assigned, or you prefer to use a fixed lot size, edit the related parameters.

De forma predeterminada, el tamaño del lote se calculará automáticamente, con un bajo nivel de riesgo y el 100% del saldo asignado a este robot. Si desea cambiar el nivel de riesgo, la balanza asignada o si prefiere utilizar un tamaño de lote fijo, edite los parámetros relacionados.

По умолчанию размер партии будет рассчитываться автоматически, с низким уровнем риска и 100% баланса, назначенного этому роботу. Если вы хотите изменить уровень риска, присвоенный баланс или предпочитаете использовать фиксированный размер лота, отредактируйте связанные параметры.

默认情况下，批量大小将自动计算，具有低风险级别和分配给此机器人的余额的100%。如果要更改风险级别，分配的余额，或者您希望使用固定批量，请编辑相关参数。

<input type="checkbox"/> param_size	----- ORDER SIZE PARAMETERS -----		
<input type="checkbox"/> p21	Select 'yes' if you want to set the size of the trades automatically.		
<input type="checkbox"/> Autolot_Apply	yes	yes	
<input type="checkbox"/> p22	Select the risk level.		
<input type="checkbox"/> Autolot_Risk_Level	LOW	LOW	
<input type="checkbox"/> p23	Define the percentage of your account balance to assign (0-100.0).		
<input type="checkbox"/> Autolot_Balance_Percentage	100.0	100.0	
<input type="checkbox"/> p24	Enter the size of the order here (used only if Autolot_Apply is not selected)..		
<input type="checkbox"/> p25	Recommended: 0.01 lots / 1.000\$ of balance		
<input type="checkbox"/> Fixed_Order_Size	0.1	0.1	

Price Action Expert Advisor v2.6 (June 2018)

manual – manual - руководство - 手册

Step 6 – Paso 6 - Шаг 6 - 步骤 6

If you don't like to trade the recommended pairs by default, you can edit the list of pairs in each of the four parameters **Single_Chart_XX_Pairs**.

Si no desea utilizar los pares recomendados de forma predeterminada, puede editar la lista de pares en cada uno de los cuatro parámetros **Single_Chart_XX_Pairs**.

Если вы не хотите торговать рекомендованными парами по умолчанию, вы можете редактировать список пар в каждом из четырех параметров **Single_Chart_XX_Pairs**.

如果您不喜欢默认交易推荐的对，您可以在四个参数Single_Chart_XX_Pairs的每个中编辑对的列表。

<input type="checkbox"/> param_single_chart	----- SINGLE CHART MODE -----			
<input type="checkbox"/> p31	If selected, only one chart for each timeframe(M5,M15,M30,H1) must be opened (EURUSD			
<input type="checkbox"/> Single_Chart_Mode	yes	yes		yes
<input type="checkbox"/> p32	The list of pairs traded for each timeframe. You must use the semicolon character (;) to se			
<input type="checkbox"/> p33	The code of the pair is composed by 2 digits. The value of each digit is:			
<input type="checkbox"/> p34	1.usd 2.eur 3.gbp 4.jpy 5.aud 6.cad 7.chf 8.nzd 9.xau. For example, 21 is EURUSD			
<input type="checkbox"/> Single_Chart_M5_Pairs	21;51;17;25;31;14;16;23;24;81;54;26;34;91;56			
<input type="checkbox"/> Single_Chart_M15_Pairs	21;51;17;25;31;14;16;23;24;81;54;26;34;91			
<input type="checkbox"/> Single_Chart_M30_Pairs	21;51;17;25;31;14;16;23;24;81;54;26;34;91			
<input type="checkbox"/> Single_Chart_H1_Pairs	21;51;17;25;31;14;16;23;24;81;54;26;34;91			

Size of the orders

The parameters related with the size of the orders are:

- Autolot_Apply. Select 'yes' if you want to set the size of the trades automatically.
- Autolot_Risk_Level. Risk level. (very low, low (default), moderate, high)
- Autolot_Balance_Percentage. Define the percentage of your account balance to assign (0-100%).
- Fixed_Order_Size. Size of the order here (only if Autolot_Apply is not selected).

If Autolot is used, the size of the order will be different for pairs with different base currency. The objective is that the same percentage of movement in different pairs, move the same quantity of money in the balance. For example, in the image above, 45.316,98 €, representing the 65% of the balance, are assigned to the expert in low risk. This results in a size of 0.42 lots for EURUSD, and 0.36 for GBPUSD. If a movement of 1% happens in the two pairs, the profit of the trades will change the same amount of money. The recommended ratio size/balance if someone want to use fixed size, is about 0.01 lots / 1.000 \$ of balance. This is similar to a level of risk between low and moderate if we compare to the previous version 2.3.

Then, 1.000 \$ is the minimal balance recommended for use the expert.

▼ EURUSD,M5 1.06555 1.06557 1.06549 1.06555
SFE Price Action R230 - M5 - 01:10:43
EURUSD completed (size: 0.42)
USDCHF completed (size: 0.45)
GBPUSD completed (size: 0.36)
EURGBP completed (size: 0.42)
EURCAD completed (size: 0.42)
AUDCAD completed (size: 0.59)
6 of 15 processed (0 errors) - 01:10:07
AUDUSD completed (size: 0.59)
EURAUD completed (size: 0.42)
USDJPY completed (size: 0.45)
USDCAD completed (size: 0.45)
EURJPY completed (size: 0.42)
NZDUSD completed (size: 0.65)
AUDJPY completed (size: 0.59)
GBPJPY completed (size: 0.36)
XAUUSD completed (size: 0.37)
15 of 15 processed (0 errors) - 01:10:35
Balance assigned (65%): 45316.98