

# Taranus – Forex Expert Advisor

Version 6. June, 2017.

**Taranus** - multi-purpose and universal trading robot that helps a trader to earn on Forex market!  
Taranus from the Russian word - "таран" (taran), translated - "battering ram".

**Taranus** is a **semi-automatic** Expert Advisor intended for operation under control of a trader. A trader's task is to assess the market situation, select the appropriate strategy – the rest is up to the Expert Advisor! The market is changing: the strategy that was effective yesterday may not be the same today. Trader need to monitor what happens in the market and adjust the Expert Advisor's operation.

**Taranus** is designed for **experienced traders** familiar with the basics of technical analysis.

## Hot keys

**F7** – opens properties window of the Expert Advisor

**Shift + 0** – closes absolutely all trades opened in the terminal and deletes all pending orders.

To do it, you need to place the cursor over the price chart, where the Expert Advisor is running, click on the chart with the left mouse button (select the chart) and then press "Shift" and "0" buttons in sequence. After doing that, all the **Taranus** Expert Advisors will not be allowed to trade in the terminal.

To allow **Taranus** to trade, press "Shift" and "0" buttons again.

## Top info panel:

D1	156	Taranus ☺	1.35410
Time: 08:30 - 20:55			
Balance = 2872.15 USD			1.35105
Equity = 2872.15 USD			
Profit 100.0 % = 5744.30 USD			1.34805
Loss 80.0 % = 574.43 USD			
AutoLot = 0.10 (4)			1.34500
Orders = 0			
Pending orders			1.34195

**Time:** – shows the time of the Expert Advisor's operation in hours and minutes according to the MetaTrader 4 terminal's time;

**Balance = 2872.15USD** – current level of account Balance in the deposit currency;

**Equity = 2872.15 USD** – current level of account Equity in the deposit currency;

**Profit = 100.00 % = 5744.30 USD** – profit as a percentage of the current level of account balance, in the deposit currency;

**Loss = 80.00 % = 574.43 USD** – limits a loss in terms of percentage of account balance, in the deposit currency;

**AutoLot = 0.10 (4)** – shows a preliminary result of automatic lot calculation in brackets the maximum number of allowed orders;

**Orders = 0** – shows the number of open orders;

**Pending orders** – the inscription reminds of the type of orders selected for work the Expert Advisor.

## Bottom info panel:

AutoTrend 1	———	↑	H1	0.75235
AutoTrend 2	———	↓	M30	0.75205
Indicator	———	One MA	← M15	
Setting trailing stop	———	Trailing stop	300 points	0.75175

## EXTERNAL VARIABLES

The external variables used in [Taranus](#) are split into 10 blocks for the sake of ease of use.

**Block 1 «GENERAL SETTINGS»**

**Block 2 «RISK MANAGEMENT»**

**Block 3 «AUTO TREND»**

**Block 4 «INDICATORS»**

**Block 5 «TRADE LEVELS»**

**Block 6 «PENDING ORDERS»**

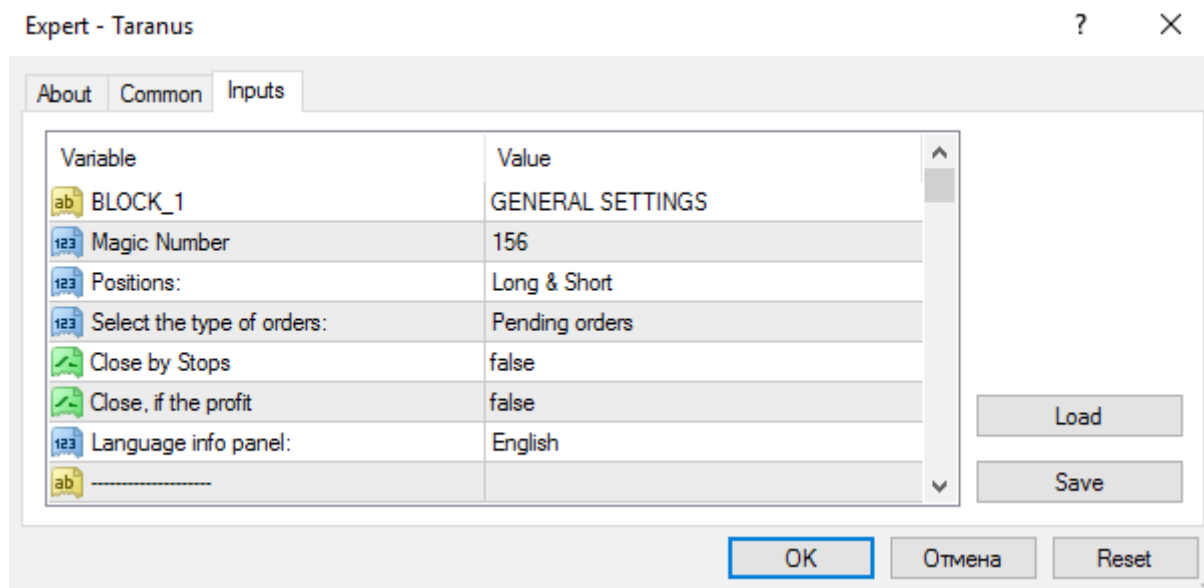
**Block 7 «TRAILING STOP AND BREAK EVEN»**

**Block 8 «TRADE BY TIME»**

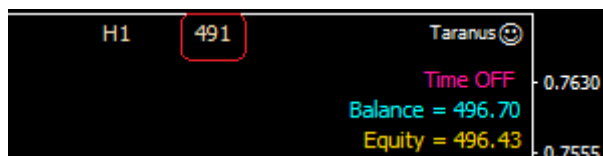
**Block 9 «NEWS TRADING»**

**Block 10 «OTHER SETTINGS»**

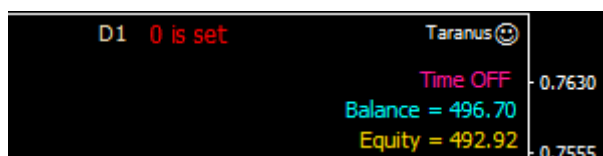
### Block 1. GENERAL SETTINGS



**Magic Number** = 491 – if you plan to use several [Taranus](#) Expert Advisors on one account simultaneously, set an individual magic number for each Expert Advisor. In that case you'll get several Expert Advisors operating based on various strategies, simultaneously and on various instruments and thereby not conflicting with each other. The magic number will be displayed on the chart for your convenience and appear in the right corner of the terminal's screen to the left of the Expert Advisor.

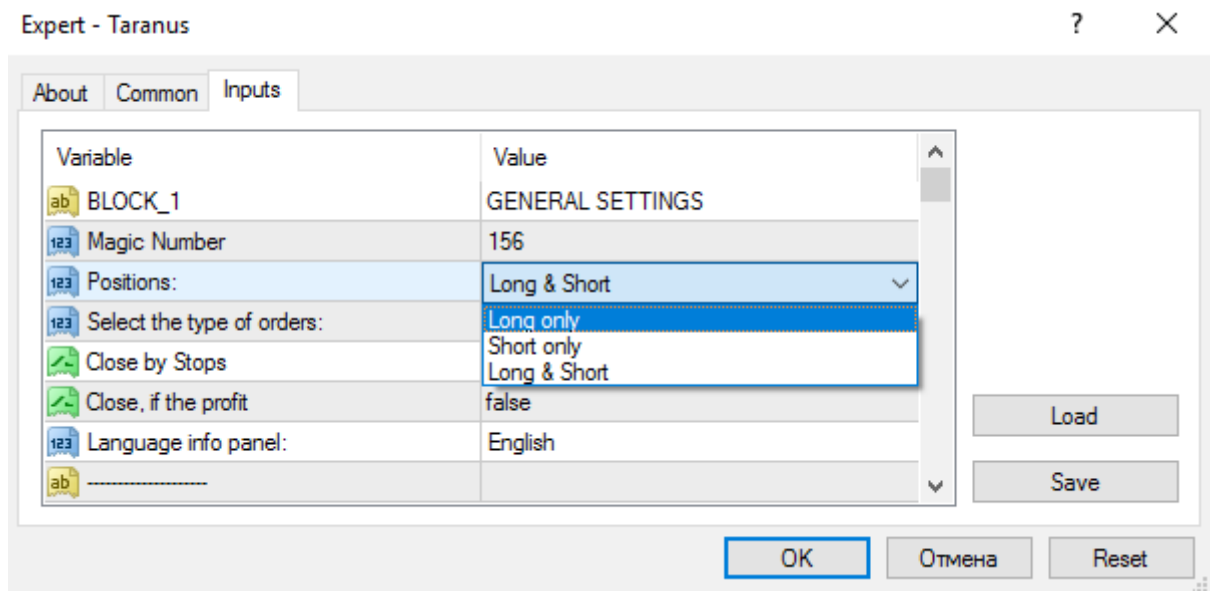


You can specify any numbers – two-digit, three-digit, four-digit, etc.



If the magic number is equal to 0, the Expert Advisor will notify you about it by this message: «**0 is set**».

**Important:** if the magic number is set to 0, the Expert Advisor will not place and open orders by itself and will manage and track orders opened by a trader manually.



#### Positions:

**Long only** – only Buy;

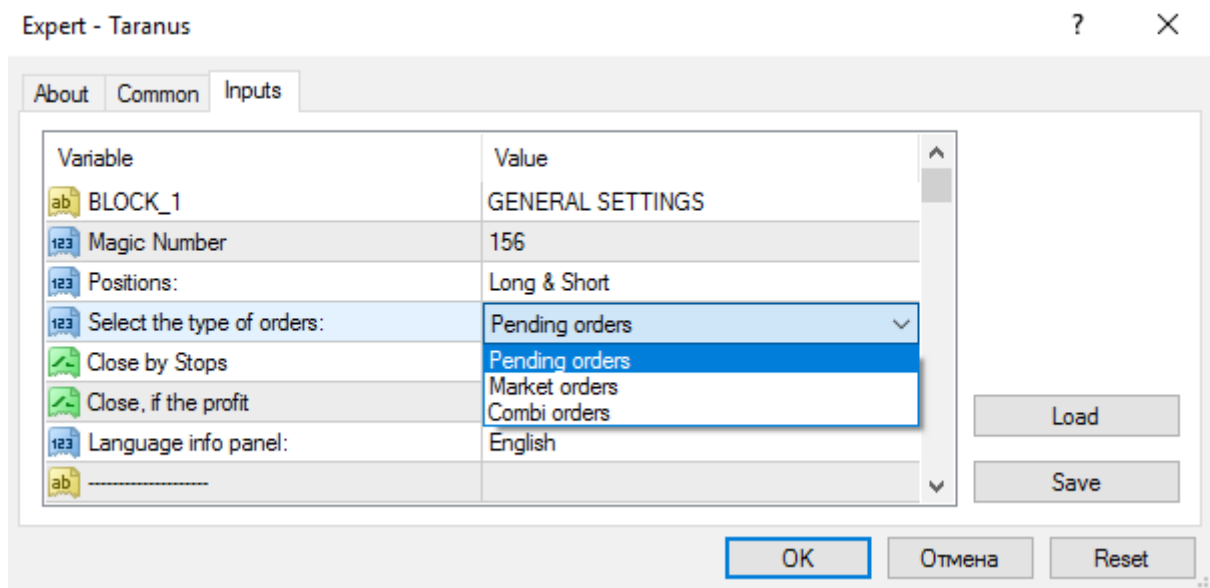
**Short only** – only Sell;

**Long & Short** – trade in both directions; **Positions:**

**Long only** – only Buy;

**Short only** – only Sell;

**Long & Short** – trade in both directions;



#### Select the type of orders:

**Pending orders** – trade only by pending orders;

**Market orders** – trade only market orders;

**Combi orders** – combination trade pending and market orders.

**Close by Stops** = false – if the function is enabled (if set to true), the Expert Advisor will close open positions only by stop-loss or take-profit ignoring indicators' signals (in other words, positions will not be closed by indicators' signals). At that positions will be opened based on indicators' signals as before.

The principle behind the «Close by Stops» functions is the same as with **trade levels**: orders will be set and positions will be opened upon a breakout of or a bounce off a trade level, positions will be closed by stop-loss or take-profit only.

Pending orders will be deleted together with the closing of open positions only when the price crosses the level of the opposite trade and appear to signal the opening of orders in the opposite direction. It does not matter where the arrow will point to the trend indicator, if at this moment with the trade levels you used

AutoTrend 1 and AutoTrend 2.

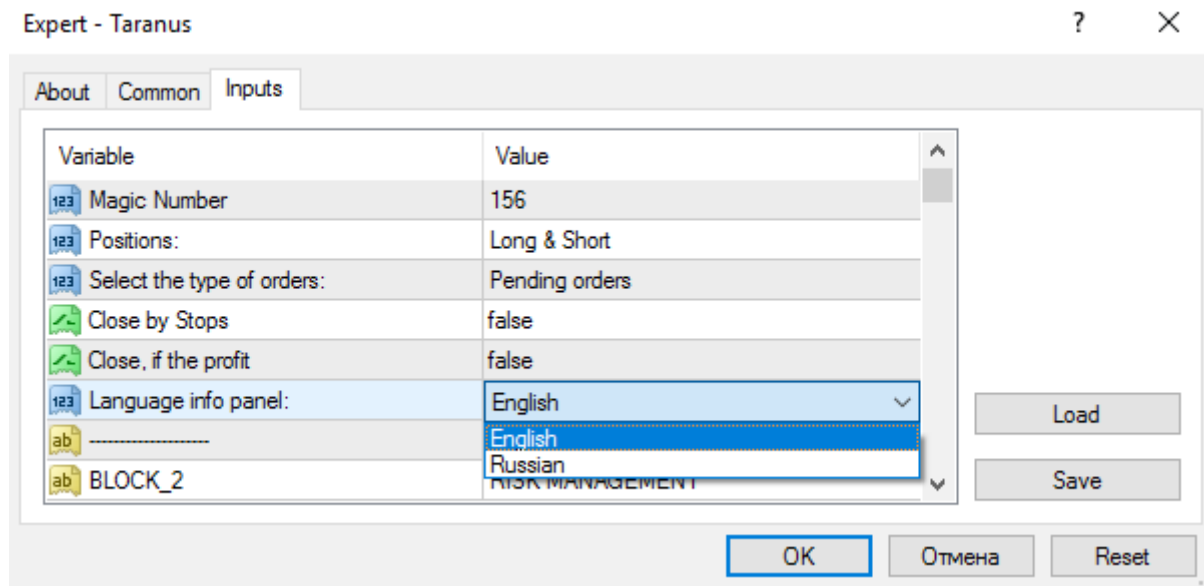
**Important:** «Close by Stops» doesn't affect an execution of such functions as «Profit in %» and «Loss in %». If one of these functions is executed, trades will be closed, and the further trading will be stopped, until a new cycle starts, and a new bar specified in «New Start upon opening bar» opens.

**Close, if the profit** = false – if true, then all positions will be closed, when account profit is positive. When you have many open positions and a profit, and «Close, if the profit» is enabled, it will result in automatic closing of **absolutely all the positions** opened in your terminal and deleting the remaining pending orders (you can also press **Shift + 0** to do it).

By enabling «Close, if the profit» you get a chance to emerge from losses and take a profit of 1 point in case of price retracement.

**Important:** if «Close, if the profit» is enabled, at least, in one **Taranus** Expert Advisor, it will be automatically enabled in other **Taranus** Expert Advisors operating on the same account. If the gross profit is positive, absolutely all the orders opened in the terminal will be closed, and the further trading will be stopped, until a new cycle starts, and a new bar specified in «New Start upon opening bar» opens.

To continue trading, you need to go to the properties of any **Taranus** Expert Advisor and press “OK” button, i.e. re-initialize the Expert Advisor. When done, all the Expert Advisors will begin their operation based on the previous strategy again.



**Language info panel:** – switch the language on the info panel can be Russian or English.

## Block 2. RISK MANAGEMENT

**One order only** = true – enables trading by one order and in one direction only.

The strategy allows the Expert Advisor placing only one order in one direction. When the order is closed (by stop-loss or take-profit), the Expert Advisor will no longer place an order in the same direction, but it will wait for an opposite trading signal.

Such mode of operation can be used with lower timeframes – M5, M15, M30 – where the price changes its direction frequently. With market orders does not work.

**AutoStop** = true – enables automatic calculation of stop-loss and take-profit levels. To disable it, set it to false. The Expert Advisor gets information about the market volatility with the use of ATR (Average True Range) indicator (ATR period = 14) and H1 timeframe. ATR indicator settings are set to default values and cannot be changed. Stop-loss value is calculated on the basis of the volatility range. If you multiply the stop-loss value by 3, you'll obtain take-profit value.

**Coefficient for AutoStop** = 2.5 – helps to select an optimal value of the AutoStop function. 1.0 is good for H1.

**Important:** the minimum allowable stop-loss and take-profit is not less than 10 points for AutoStop. If you need smaller stop-loss and take-profit, disable the AutoStop function and set the necessary value manually.

Expert - Taranus

About Common Inputs

Variable	Value
ab BLOCK_2	RISK MANAGEMENT
One order only	false
AutoStop	false
1/2 Coefficient for AutoStop	2.5
123 Take Profit	120
123 Stop Loss	40
1/2 Lots	0.0
123 Number of orders	4
123 Risk in % - AutoLot calculation	4
ab -----	
Max Profit	false
1/2 Profit in %	100.0
1/2 Loss in %	80.0
Gross Profit	false
Gross Loss	false
123 New Start upon opening bar:	1 Day
123 Slippage	3
ab -----	

Load Save

OK Отмена Reset

**Take Profit** = 150 – take-profit level in points;

**Stop Loss** = 30 – stop-loss level in points.

If you wish to give up using stop-loss, disable trailing stop or set its value to **0**. In that case the Expert Advisor will close positions by indicators' signals only.

If the «Close by Stops» function is enabled in this case, positions will be automatically closed only upon hitting a pre-set percentage of loss.

**Lots** = 0.0 – lot volume. It is set manually. If set to 0, the lot volume will be calculated automatically («Risk in % - AutoLot calculation» parameter).

**Number of orders** = 4 – the allowable number of trades opened by the Expert Advisor at a time. The maximum allowable number is 50.

**Important:** if «Number of orders» is set to 0, the Expert Advisor will not open trades by itself. However, it will monitor the situation of trades opened per **the selected instrument** by a trader. If the value of «Profit in %» is set, the Expert Advisor will close all the open positions and delete the remaining pending orders upon reaching a pre-set percentage of profit. The same thing will happen, if «Close, if the profit» is enabled.

**Risk in % - AutoLot calculation** = 4 – level of the risk per one trade set in percentage terms. If lot volume is not set, the Expert Advisor will calculate it by itself. Lot volume calculation depends on the values of Balance and «Stop Loss». If Risk = 5, then it stands 5% of Balance – the allowable loss we can incur, if a stop-loss per one trade is triggered.

**Example:** if Balance = 100 \$, stop-loss = 20, risk = 5, then the allowable loss = 5 \$ (5% of 100 \$). After 5 \$ is divided into 20 ( $5/20 = 0.25$ ), we obtain a lot volume equal to 0.25. If stop-loss is triggered, we lose 5 \$ per one trade ( $0.25 \times 20 = 5$  \$). If there are 2 orders, then the loss is 2 times larger – 10 \$ ( $0.25 \times 2 \times 20 = 10$  \$). If orders to be greater than 1 (e.g. 4), then the risk will be divided by the number of orders and volume of one lot will be = 0.06 in round figures, a total of  $4 \times 0.06 = 0.25$ .

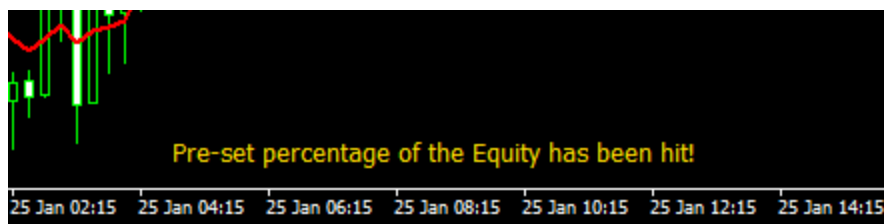
**Important:** if stop-loss = 0, and trailing stop is disabled, the Expert Advisor will not be able to automatically calculate a lot volume not without a stop-loss value. That's why it will trade the minimum lot allowable for the given instrument, which is usually 0.01. At that the **AutoLot** label on the top info panel will change its color into pink. After giving up of using stop-loss, you can manually set a fixed lot volume.

**Maximum Profit** = true - removes limitations in a percentage of profit; it is good for a long-term strategy and trading in the direction of a long trend;

**Profit in %** = 100 - closes orders, if the profit equal to the certain percentage (100%) of account Balance is hit. When the profit planned as a percentage of account Equity **for the given instrument** is hit, the Expert Advisor will close **all** the open positions and delete all the pending orders opened **for the given instrument**.

If the Expert Advisor is not disabled, the profit will be re-calculated in deposit currency allowing for a new value of Balance upon opening a new bar set in the «New Start upon opening bar» parameter, and the Expert Advisor will start a new cycle of operation.

When one of the planned values of profit or loss set as a percentage of account Equity is hit, you will see the label «Pre-set percentage of the Equity has been hit!» in the bottom of the price chart.

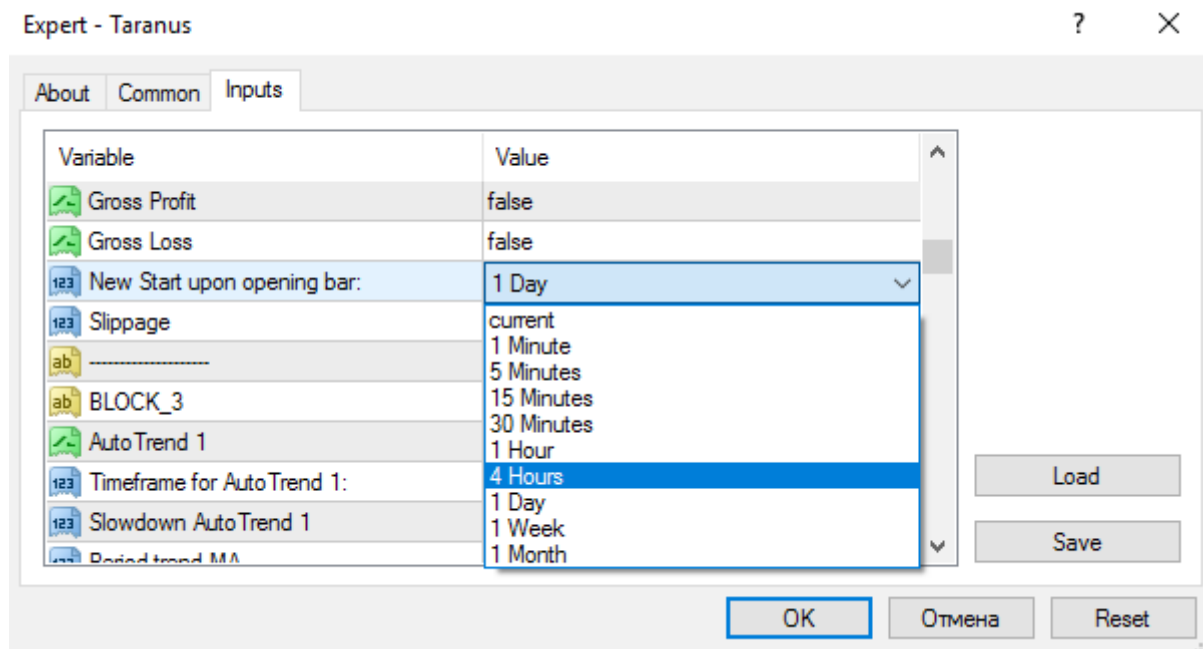


**Loss in %** = 80 - closes orders, if the loss equal to the certain percentage (80%) of account Balance is hit. When the loss planned as a percentage of account Equity **for the given instrument** is hit, the Expert Advisor will close **all** the open positions and delete all the pending orders opened **for the given instrument**.

If the Expert Advisor is not disabled, the loss will be re-calculated in deposit currency allowing for a new value of Balance upon opening a new bar set in the «New Start upon opening bar» parameter, and the Expert Advisor will start a new cycle of operation;

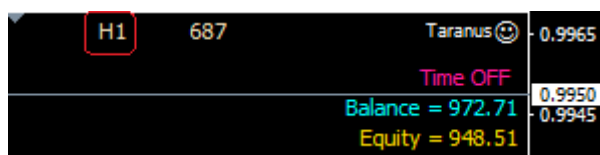
**Gross Profit** = false - if true, then all the **Taranus** Expert Advisors operating on the given account will track and allow for a gross profit set in «Profit in %». When account Equity hits a specified value of the profit, **all** the positions opened in the terminal will be closed, **all** the pending orders will be deleted, and all the **Taranus** Expert Advisors will stop their operation, until a new bar set in «New Start upon opening bar» parameter opens.

**Gross Loss** = false - if true, then all the **Taranus** Expert Advisors operating on the given account will track and allow for a gross loss set in «Loss in %». When account Equity hits a specified value of the loss, **all** the positions opened in the terminal will be closed, **all** the pending orders will be deleted, and all the **Taranus** Expert Advisors will stop their operation, until a new bar set in «New Start upon opening bar» parameter opens.



**New Start upon opening bar:** = «1 Hour» - start of a new cycle of the Expert Advisor's operation and re-calculation of risk upon opening of a bar on H1 timeframe. The given parameter sets a frequency of updating percentage values of account Equity for profit and loss in the deposit currency. When one of pre-set values of «Profit in %» and «Loss in %» is hit, the Expert Advisor will temporarily stop its operation. When a new bar opens on H1 timeframe, the planned profit and the allowable loss will be re-calculated allowing for a new value of Balance, and the Expert Advisor will start a new cycle of operation.

For the sake of ease of use the information about the current timeframe specified in the «New Start upon opening bar» parameter will be displayed on the price chart in the right upper corner next to a magic number.

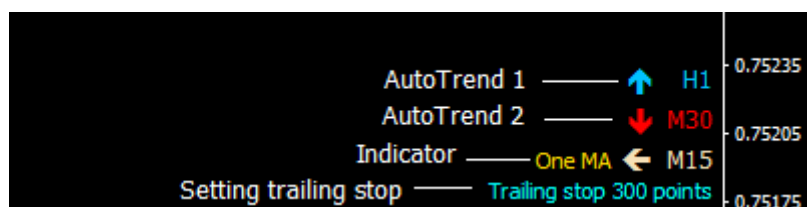


**Important:** the timeframe specified in the «New Start upon opening bar» parameter can be selected in the range from M1 to W1 and MN1. When a new bar opens, percentage values of profit and loss will be updated, if only the previous percentage values of profit and loss are hit, and all the orders are closed.

**Slippage = 3** - value of slippage in points; it is better to increase the value up to 5-10 points in the volatile market;

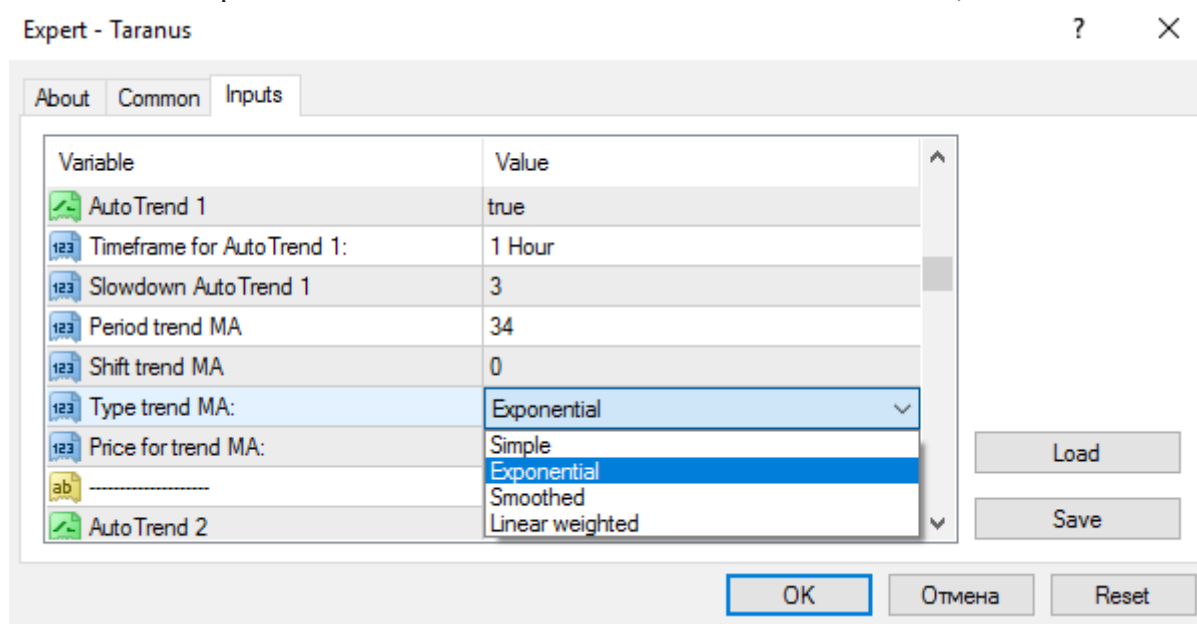
### Block 3. AUTO TREND

**AutoTrend 1** = true - automatically determines a trend direction on the pre-set timeframe with the use of one indicator – Moving Average (“MA” is the abbreviated name). Arrows indicating a trend direction and a timeframe, on which such a signal occurs, will appear in the right lower corner of the price chart on the bottom info panel. Up arrow – Buy signal, down arrow – Sell signal, horizontal arrow – out of the market.

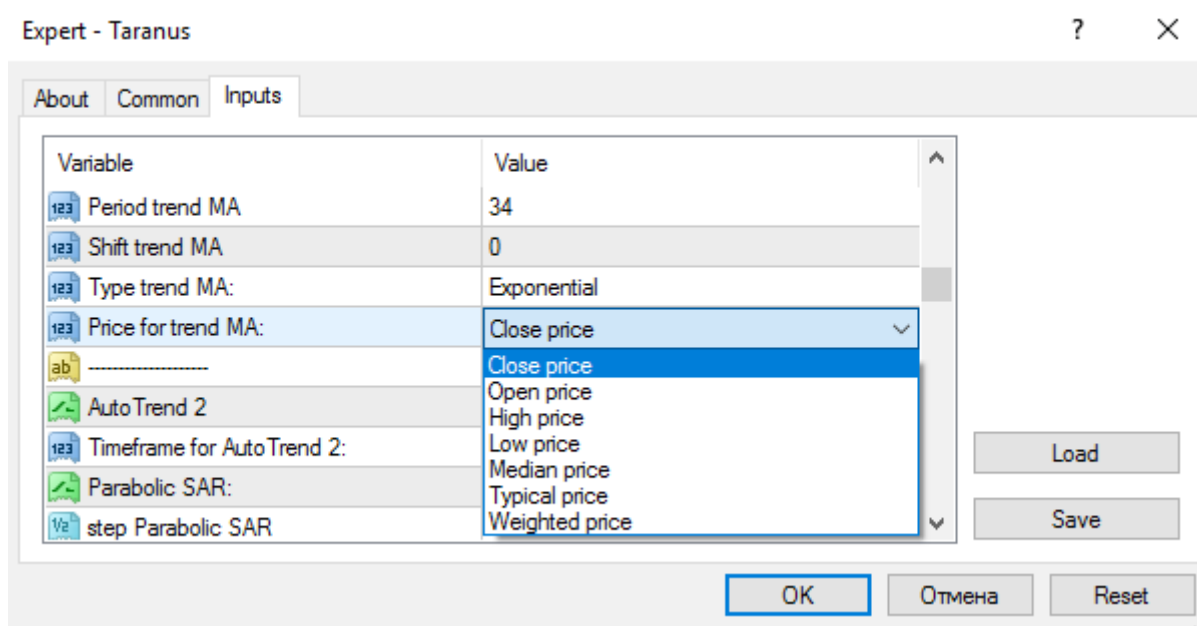




**Type trend MA:** = Exponential – enables selection a method of MA calculation;



**Price for trend MA:** = Close price – choosing prices to calculate the moving average;



When **Bid** price plus "Slowdown AutoTrend 1" is above the trend MA, a Buy signal will be generated, and a blue up arrow will appear on the panel (in the lower right corner).

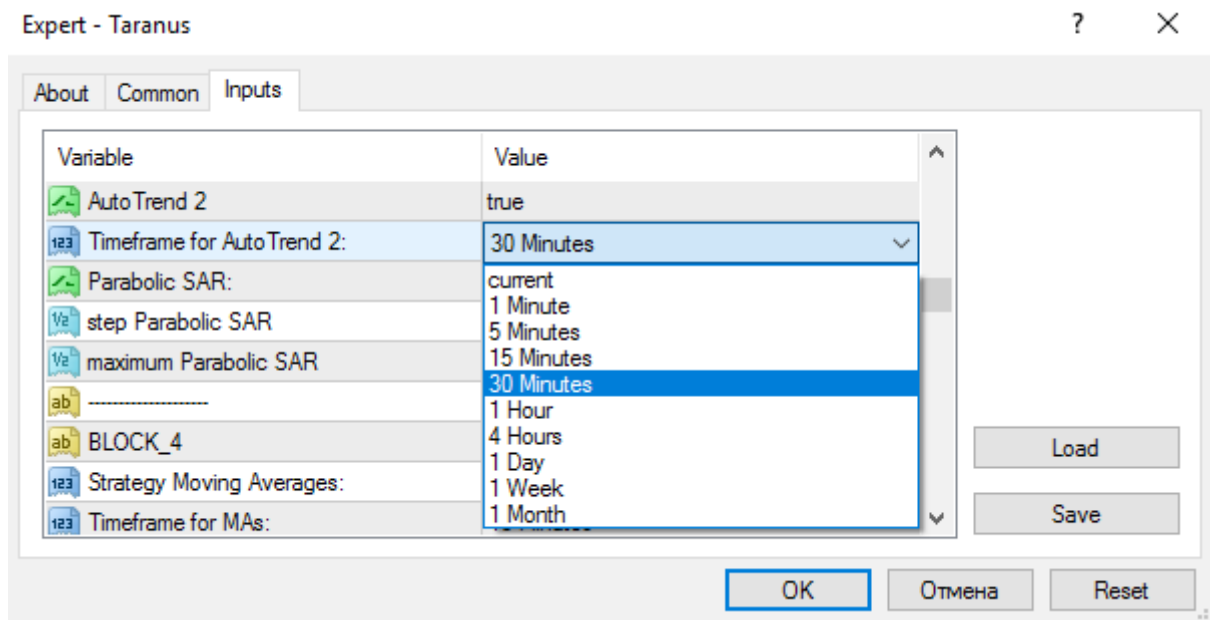


It is similarly for the opposite direction: when [Ask](#) price minus "Slowdown AutoTrend 1" is below the trend MA, a Sell signal will be generated, and a red down arrow will appear on the panel (in the lower right corner).



**Important 1:** «AutoTrend 1» parameter doesn't have a mechanism of opening and closing orders by the Expert Advisor. The Expert Advisor will only disallow (not delete) opening the opposite pending orders. If, however, together with the «AutoTrend 1» to select one direction "Long only"- only buy or "Short only" - only sell, the EA will open orders in the selected direction, by signals of the «AutoTrend 1» and close when a signal will change in the opposite direction.

**AutoTrend 2** = true – automatically determines a trend direction on the pre-set timeframe with the use of such indicators as Awesome Oscillator and Parabolic SAR. The arrow (the second from above, i.e. in the middle) located on the bottom info panel displays readings from the «AutoTrend 2»



**Timeframe for AutoTrend 2:** = «30 Minutes» - sets the timeframe, on which an additional trend is identified. Select the required timeframe from a drop-down menu using the mouse. If the «current» is selected, then «AutoTrend 2» will automatically operate on the timeframe, which is selected in the open window of the terminal at the time.

**Parabolic SAR:** = true - the Parabolic SAR indicator is used to filter out false signals coming from the Awesome Oscillator. If the indicator is disabled, then trend direction will be identified based only on the Awesome Oscillator in the «AutoTrend 2» parameter;

**step Parabolic SAR** = 0.08 – step Parabolic;

**maximum Parabolic SAR** = 0.1 – maximum Parabolic.

If the opening price (Open) of the current bar is above the Parabolic's asterisks, and the current column of the Awesome Oscillator is above the previous one (i.e. the current column is green), it will be a Buy signal, and a blue up arrow will appear on the bottom info panel.



It is similarly for the opposite direction: if the Parabolic's asterisks are above the opening price (Open) of the current bar, and columns of the Awesome Oscillator are red (its current column is below the previous one), it will be a Sell signal, and a red down arrow will appear on the bottom info panel.



If trading signals of the Awesome Oscillator and the Parabolic indicator diverge apart, then a horizontal arrow of a wheat color ("out of the market"), and all the pending orders set earlier will be deleted.



## Block 4. INDICATORS

Expert - Taranus

About Common Inputs

Variable	Value
ab BLOCK_4	INDICATORS
123 Strategy Moving Averages:	One MA
123 Timeframe for MAs:	15 Minutes
123 Period Long MA (One MA, Two MAs)	34
123 Shift Long MA	0
123 Type Long MA	Exponential
123 Price for Long MA	Close price
ab -----	
123 Period Short MA (for Two MAs)	13
123 Shift Short MA	0
123 Type Short MA:	Exponential
123 Price for Short MA:	Close price
ab -----	

Load Save

OK Отмена Reset

**Strategy Moving Averages:** – the choice of strategy MA can be 3 positions:

**One MA**

**Two MAs**

**Disable MA** – do not use indicators this block;

Expert - Taranus

About Common Inputs

Variable	Value
ab BLOCK_4	INDICATORS
123 Strategy Moving Averages:	One MA
123 Timeframe for MAs:	One MA
123 Period Long MA (One MA, Two MAs)	Two MAs
123 Shift Long MA	0
123 Type Long MA	Exponential
123 Price for Long MA	Close price
ab -----	

Load Save

OK Отмена Reset

**Timeframe for Mas:** = «15 Minutes» - it is a working timeframe for indicators. Select the required timeframe from a drop-down menu using the mouse. If the «current» is selected, then indicators will automatically operate on the timeframe, which is selected in the open window of the terminal at the time.

Variable	Value
BLOCK_4	INDICATORS
Strategy Moving Averages:	One MA
Timeframe for MAs:	15 Minutes
Period Long MA (One MA, Two MAs)	current
Shift Long MA	1 Minute
Type Long MA	5 Minutes
Price for Long MA	15 Minutes
	30 Minutes
	1 Hour
	4 Hours
	1 Day
Period Short MA (for Two MAs)	1 Week
Shift Short MA	1 Month
Type Short MA:	Exponential

Load Save

OK Отмена Reset

**Period Long MA (One MA, Two MAs)** = 34 – period of MA;

**Shift Long MA** = 0 – shift of MA;

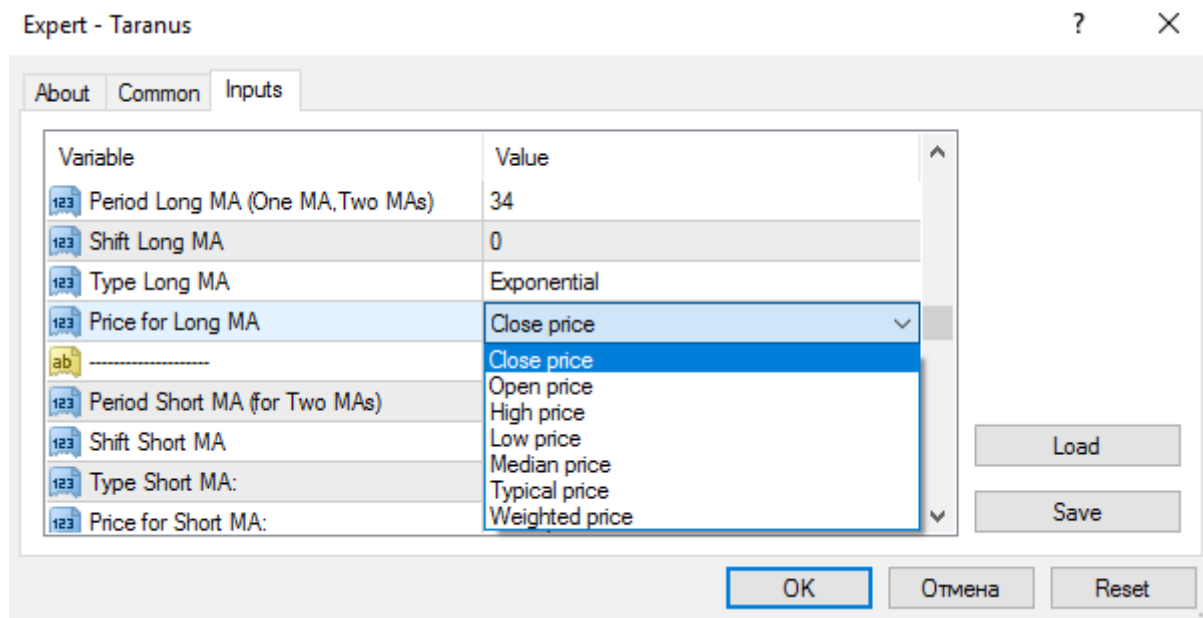
**Type Long MA:** = Exponential – enables selection a method of MA calculation;

Variable	Value
Period Long MA (One MA, Two MAs)	34
Shift Long MA	0
Type Long MA	Exponential
Price for Long MA	Simple
	Exponential
	Smoothed
	Linear weighted
Period Short MA (for Two MAs)	
Shift Short MA	0
Type Short MA:	Exponential
Price for Short MA:	Close price

Load Save

OK Отмена Reset

**Price for Long MA:** = Close price – choosing prices to calculate the moving average;

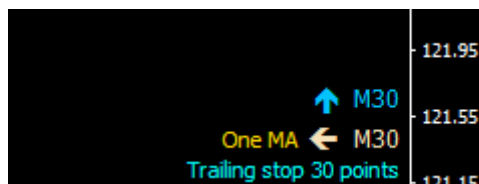


### Principle of operation one MA - pending orders and combi orders:

- Buy:** if **Bid** > MA[0] + 2 points;
- Sell:** if **Ask** < MA[0] - 2 points.

### Principle of operation one MA - market orders:

- Buy:** if Open[1] < MA[0] and Close[1] > MA[0] and **Ask** > MA[0];
- Sell:** if Open[1] > MA[0] and Close[1] < MA[0] and **Bid** < MA[0].



**Important:** when working **market orders** the lower arrow on the screen (pointer indicators) points only in the direction of an open order and if the order is not already open, the lower arrow will lie horizontally. When the order opened, the arrow will indicate its direction.

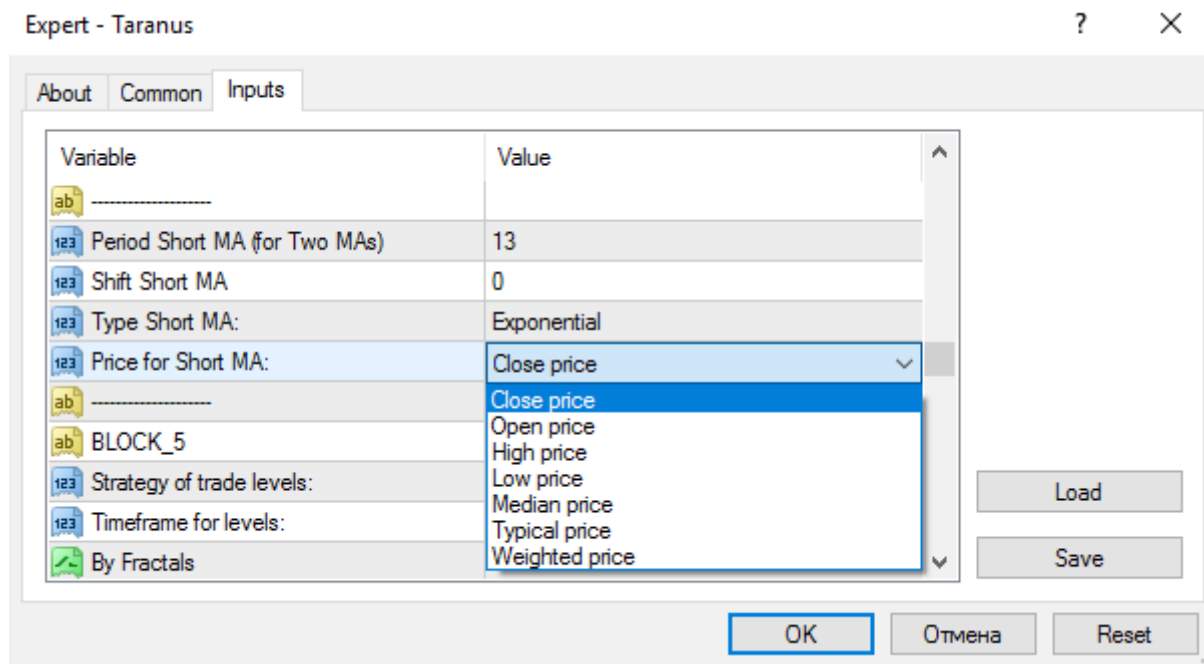
This is done because the market orders of the strategy of market entry and exit the market depend not only on price location relative to the moving average, but also on the position of the closing price of the previous bar Close[1]. So while the bar is not closed a trading signal is no arrow lies horizontally and the EA waits for confirmation for opening an order.

**Period Short MA** = 13 – period of MA;

**Shift Short MA** = 0 – shift of MA;

**Type Short MA:** = Exponential – enables selection a method of MA calculation;

**Price for Short MA:** = Close price – choosing prices to calculate the moving average;



### Principle of operation two MAs - pending orders and combi orders:

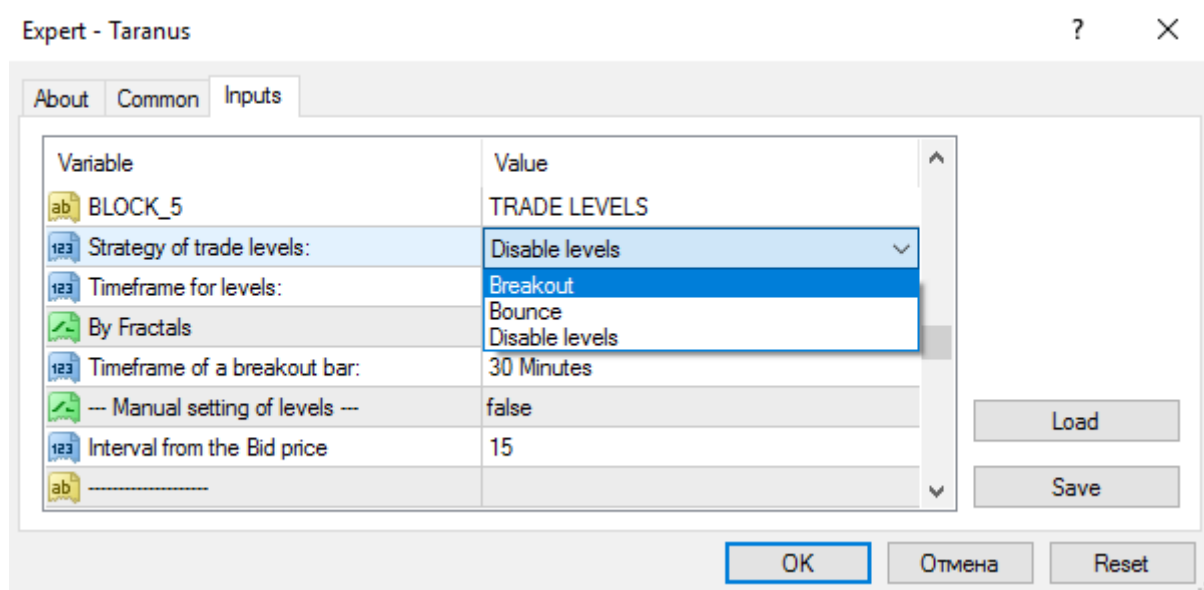
- Buy:** if  $MA\ Short[1] > MA\ Long[1] + 1\ point$  and if **Bid**  $> Open[1]$ ;
- Sell:** if  $MA\ Short[1] < MA\ Long[1] - 1\ point$  and if **Ask**  $< Open[1]$ .

### Principle of operation two MAs - market orders:

- Buy:** if  $MA\ Short[1] < MA\ Long[1]$ , and  $MA\ Short[0] > MA\ Long[0]$  and **Ask**  $> MA\ Long[0]$ ;
- Sell:** if  $MA\ Short[1] > MA\ Long[1]$ , and  $MA\ Short[0] < MA\ Long[0]$  and **Bid**  $< MA\ Long[0]$ .

**Important:** the parameters of the short moving average will only works on the strategy of the intersection of two MAs.

## Block 5. TRADE LEVELS



**Strategy of trade levels:** – the choice of strategy trade levels can be 3 positions:

**Breakout** – strategy for the breakout of the trading level i.e. beyond the boundaries of the corridor;

**Bounce** – strategy bounce from the trade level i.e. trade within the corridor;

**Disable levels** – trade levels are not used;

**Breakout** – the blue line is above (buy from the line), and the red line is below (sell from the line).

**Pending orders and combi orders:** if the **Bid** price is above the upper level (the blue line) and the above close price of the previous bar ( $\text{Bid} > \text{Close}[1]$ ), the Expert Advisor will place pending Buy orders. At that, pending Sell orders will be deleted, and open Sell positions will be closed.



**Market orders:** if the Low price of the previous bar [1] below Level Buy (the blue line) and the Close price of the previous bar [1] and the **Bid** price is above Level Buy the Expert Advisor will open Buy orders. At that, open Sell positions will be closed.



If the price goes in the opposite direction, and the Close price of the previous bar [1] and the **Ask** price is below the blue line, then all the pending Buy orders will be deleted, and open Buy positions will be closed. If you don't your open positions to be closed, when the price comes back in the channel, you can

enable the «Close by Stops» function. In this case open Buy positions will remain in the channel and be closed either by stop-loss or take-profit.

It is similarly for the opposite direction, **pending orders and combi orders**: if the **Ask** price is below the lower level (the red line) and below the close price of the previous bar ( $\text{Ask} < \text{Close}[1]$ ), the Expert Advisor will place pending Sell orders. At that, pending Buy orders will be deleted, and open Buy positions will be closed.



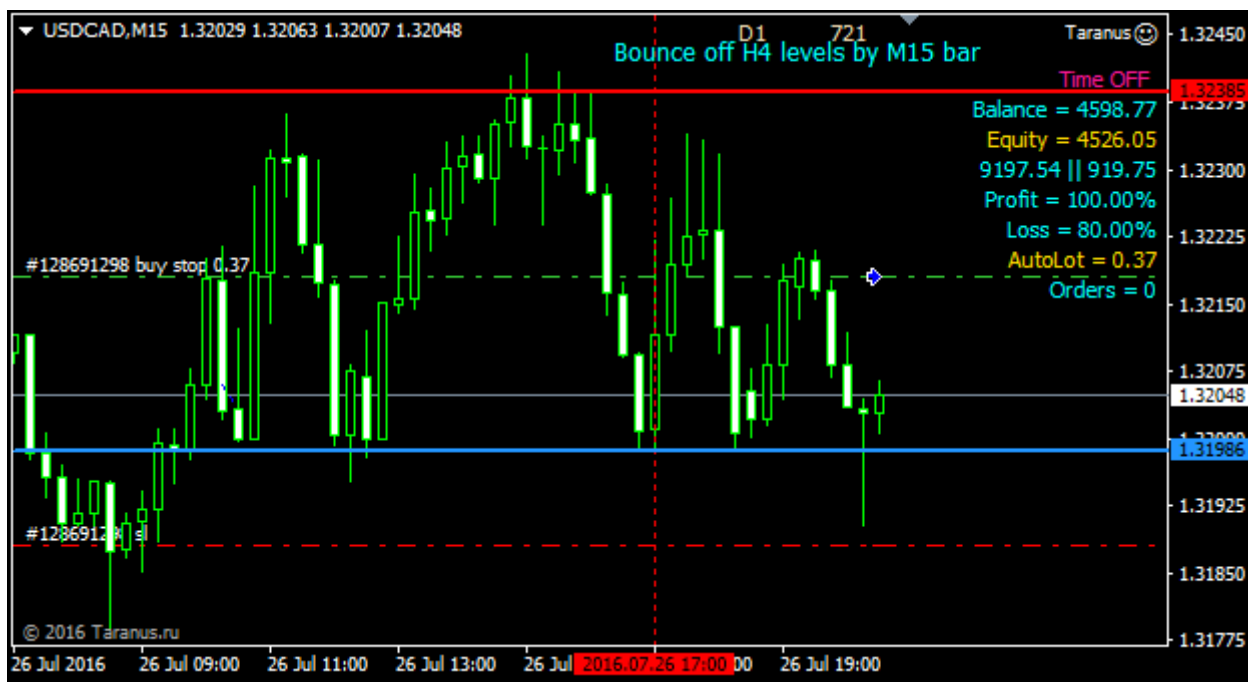
**Market orders**: if the High price of the previous bar [1] above Level Sell (the red line) and the Close price of the previous bar [1] and the **Ask** price is below Level Sell, the Expert Advisor will place open Sell orders. At that, open Buy positions will be closed.



If the price goes in the opposite direction, and the Close price of the previous bar [1] and the **Bid** price is above the red line, then all the pending Sell orders will be deleted, and open Sell positions will be closed. If you don't your open positions to be closed, when the price comes back in the channel, you can enable the «Close by Stops» function. In this case open Sell positions will remain in the channel and be closed either by stop-loss or take-profit.

**Bounce** - the blue line is below (buy from the line), and the red line is above (sell from the line).

**Pending orders and combi orders:** if Low price of the previous bar [1] is below Level Buy (the blue line), and the Close price of the previous bar [1] and the **Bid** price is above Level Buy, the Expert Advisor will place pending Buy orders. At that, pending Sell orders will be deleted, and open Sell positions will be closed.



**Market orders:** as well as with pending orders: if the Low price of the previous bar [1] is below Level Buy (the blue line), and the Close price of the previous bar [1] and the **Bid** price is above Level Buy, the Expert Advisor will open Buy orders. At that, open Sell positions will be closed.



If the price goes in the opposite direction, and the Close price of the previous bar [1] and the **Ask** price is below the blue line, then all the pending Buy orders will be deleted, and open Buy positions will be closed. If you don't your open positions to be closed, when the price comes back in the channel, you can enable the «Close by Stops» function. In this case open Buy positions will be closed either by stop-loss or take-profit.

**Important:** pending orders will be deleted together with the closing of open positions only when the price crosses the level of the opposite trade and appear to signal the opening of orders in the opposite direction. It does not matter where the arrow will point to the trend indicator, if at this moment with the trade levels you used AutoTrend 1 and AutoTrend 2.

It is similarly for the opposite direction, **pending orders and combi orders:** if the High price of the previous bar [1] is above Level Sell (the red line), and the Close price of the previous bar [1] and the [Ask](#) price is below Level Sell, the Expert Advisor will place pending Sell orders. At that, pending Buy orders will be deleted, and open Buy positions will be closed.

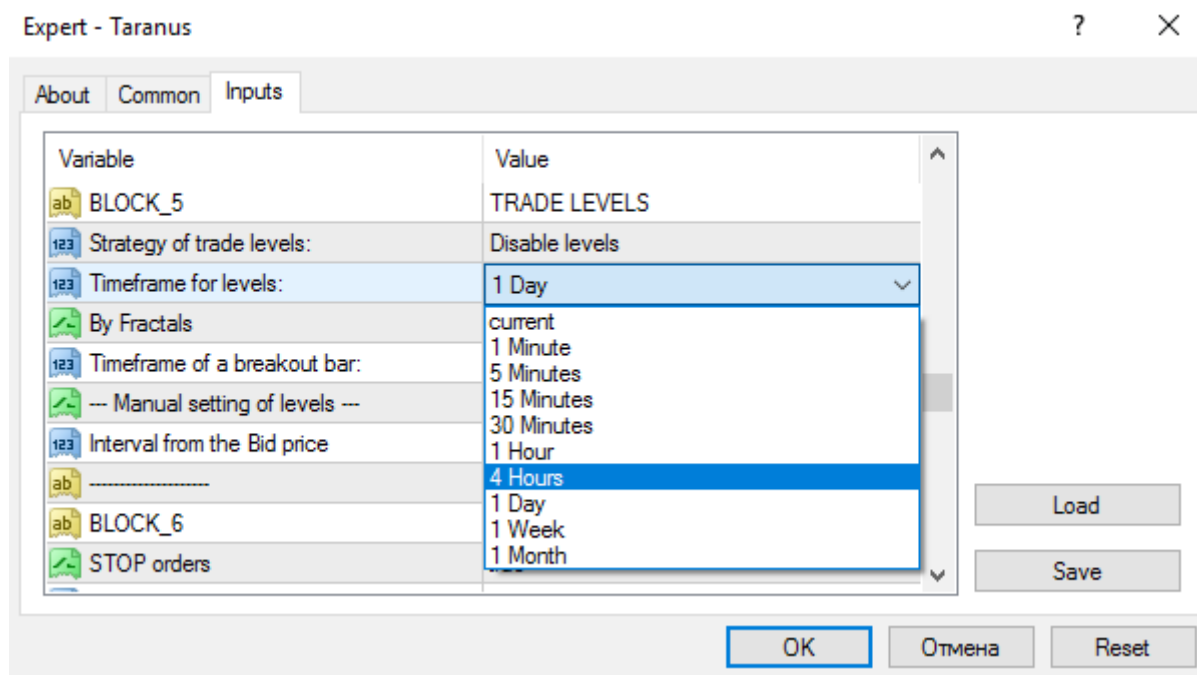


**Market orders:** as well as with pending orders: if the High price of the previous bar [1] is above Level Sell (the red line), and the Close price of the previous bar [1] and the [Ask](#) price is below Level Sell, the Expert Advisor will open Sell orders. At that, open Buy positions will be closed.



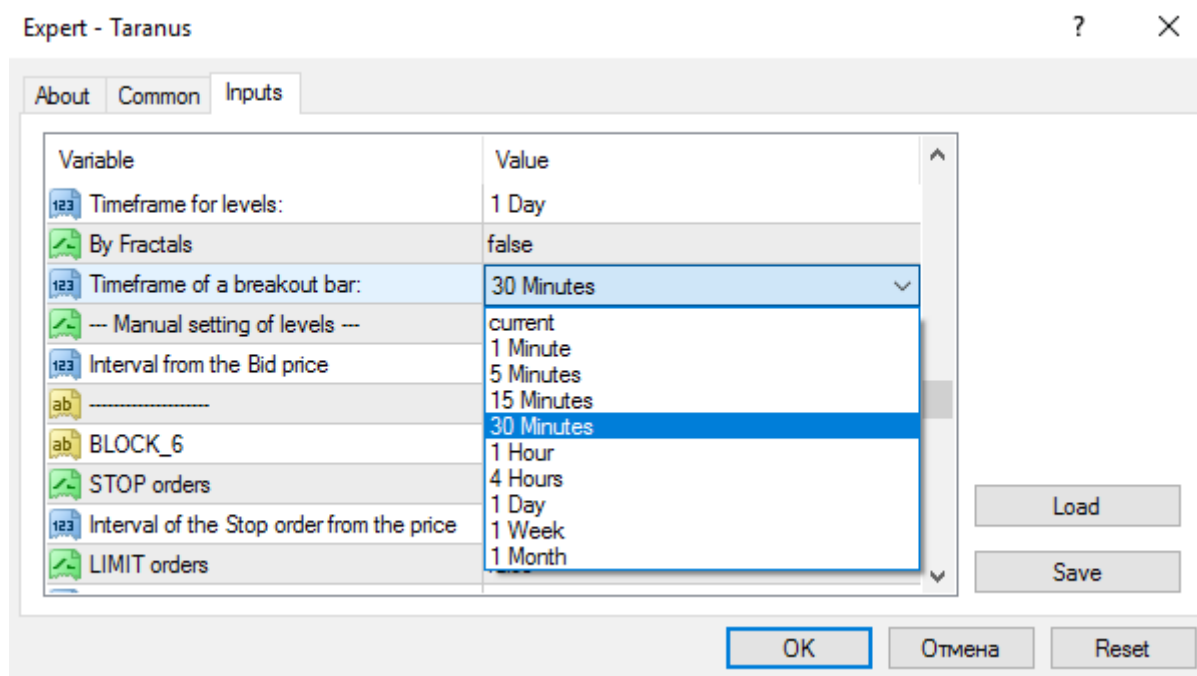
If the price goes in the opposite direction, and the Close price of the previous bar [1] and the [Bid](#) price is above the red line, then all the pending Sell orders will be deleted, and open Sell positions will be closed.

If you don't your open positions to be closed, when the price comes back in the channel, you can enable the «Close by Stops» function. In this case open Sell positions will be closed either by stop-loss or take-profit.



**Timeframe for levels:** = «4 Hour» - enables selection a timeframe, on which levels are built based on High and Low prices of the previous bar. Select the required timeframe from a drop-down menu using the mouse. If the «current» is selected, then levels will be automatically built based on the bar of that timeframe, which chart is opened in the terminal at the time.

**by Fractals** = false - the trade levels will be built based on the last fractals on the selected timeframe.



**Timeframe of a breakout bar:** = «15 Minutes» - enables selection a “breakout bar”, i.e. the timeframe, on which the bar breaks through (or bounces off) a trade level. Select the required timeframe from a drop-down menu using the mouse. If the «current» is selected, then the bar of the timeframe, which chart is opened in the terminal at the time, will act as the “breakout bar”.

**Manual setting of levels:** = false - if the function is enabled (if true), levels will be built at the distance equal to the selected interval from the current **Bid** price;

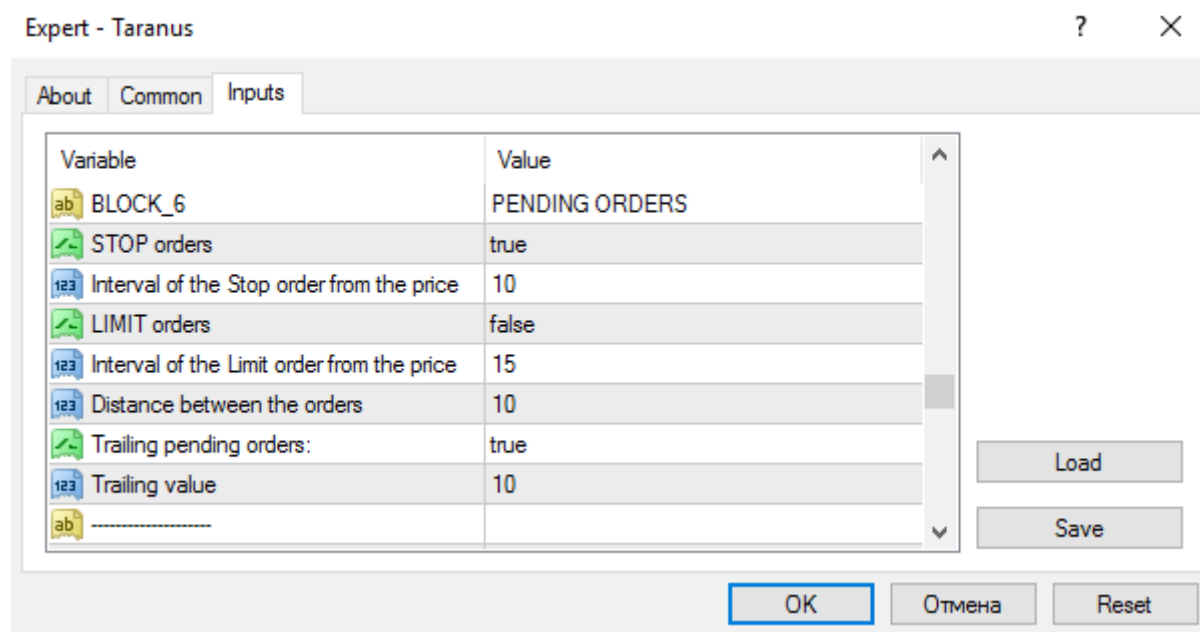
**Interval from the Bid price** = 20 - interval (in points) between the **Bid** price and every level;

**Important 1:** if enabled the trade levels and the current bar has already breached the high or low of the previous bar (outside the corridor), then in this situation the strategy will not work and the EA will wait for the closed of the current bar and trade levels will be adjusted according to the new parameters.

**Important 2:** if one of the trade levels has been broken through, and there are open positions, the Expert Advisor will cease to move the trade levels automatically, until all the positions are closed. However, a trader can manually move the levels at his own discretion.

**Important 3:** if you select "Manual setting of levels", changing the position of trade levels relative to the new Bid price will depend on the selected period in the "Timeframe for levels:". The adviser will, at specified intervals, to move trading levels, but only if there are no open positions.

## Block 6. PENDING ORDERS



**STOP orders** = true - allows opening Sell Stop and Buy Stop orders; select "false" to disable;

**Interval of the Stop order from the price** = 10 - interval (in points) between the current price and the closest (to the current price) pending Stop order;

**LIMIT orders** = true - allows opening Sell Limit and Buy Limit orders; select "false" to disable;

**Interval of the Limit order from the price** = 15 - interval (in points) between the current price and the closest (to the current price) pending Limit order;

**Distance between the orders** = 10 - interval (in points) between pending orders;

**Trailing pending orders:** = true - enables trailing of pending orders; select "false", if you wish to disable following of the pending orders after the price;

**Trailing value** = 10 - when the price starts to move from a pending order, the Expert Advisor will move (i.e. modify) the pending order in the direction of and at the certain interval from the price maintaining the pre-set distance between the pending orders.

**Important:** if the Expert Advisor is removed from the chart, the remaining pending orders will be deleted automatically. The same thing will happen, if the terminal is closed or restarted.

**Advice:** interval of pending orders from the current price should be selected individually. The interval depends on your strategy, rate of your trading aggression, and the timeframe, which you work on.

## Block 7. TRAILING STOP AND BREAKEVEN

**Breakeven:**= true – enables a breakeven, if there is a small profit, and trailing has not been enabled yet, the Expert Advisor will move a stop-loss to the level , at which an order has been opened, and close the position, when the stop-loss is triggered;

**Profit for breakeven** = 10 – level of take-profit in points, at which a breakeven is enabled;

**Breakeven value** = 1 – sets the level, at which a stop-loss must be moved; if set to 1, then the position will be closed, when the profit is 1 point; if set to 0, then the position will be closed with the profit of 0 points, when a stop-loss is triggered;

Expert - Taranus

About Common Inputs

Variable	Value
BLOCK_7	TRAILING STOP AND BREAKEVEN
Breakeven	false
Profit for breakeven	10
Breakeven value	1
-----	
Trailing Stop:	Normal
Timeframe for trailing stop:	30 Minutes
Trailing stop by:	Points
Trailing stop value	30
Trailing step	2
Retreat from High/Low (for MS >10)	5
Level of Volumes	100
-----	

Load Save

OK Отмена Reset

Expert - Taranus

About Common Inputs

Variable	Value
-----	
Trailing Stop:	Normal
Timeframe for trailing stop:	Normal
Trailing stop by:	Mobile stop loss
Trailing stop value	Total trailing stop
Trailing step	2
Retreat from High/Low (for MS >10)	5
Level of Volumes	100
-----	
BLOCK_8	TRADE BY TIME

Load Save

OK Отмена Reset

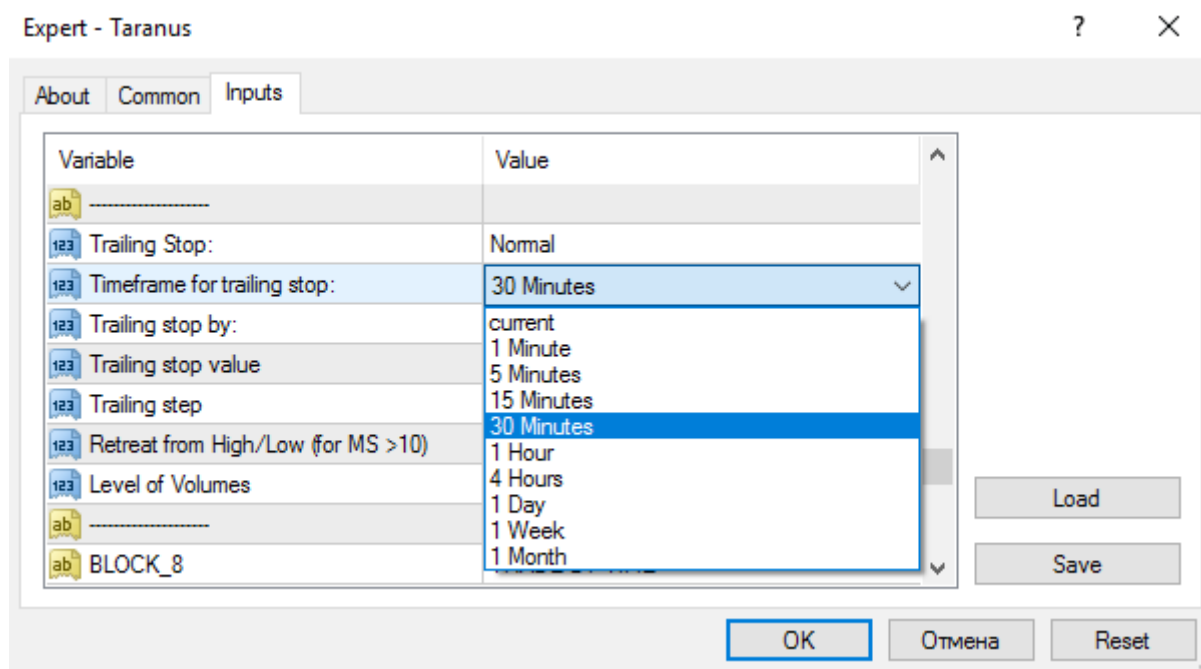
**Trailing Stop:** – strategy choice of the trailing stop can be 4 positions:

**Normal** – standard trailing stop;

**Mobile stop loss** – stop loss follows for the price like a trailing stop;

**Total trailing stop** – closes all open orders and even those who have loss, but on the condition that the total profit for all closed orders will be positive;

**Disable trailing** – do not use trailing stop;



**Timeframe for trailing stop:** = «30 Minutes» – choice of the timeframe by which you want to work with trailing stop by the bars, fractals and volumes;

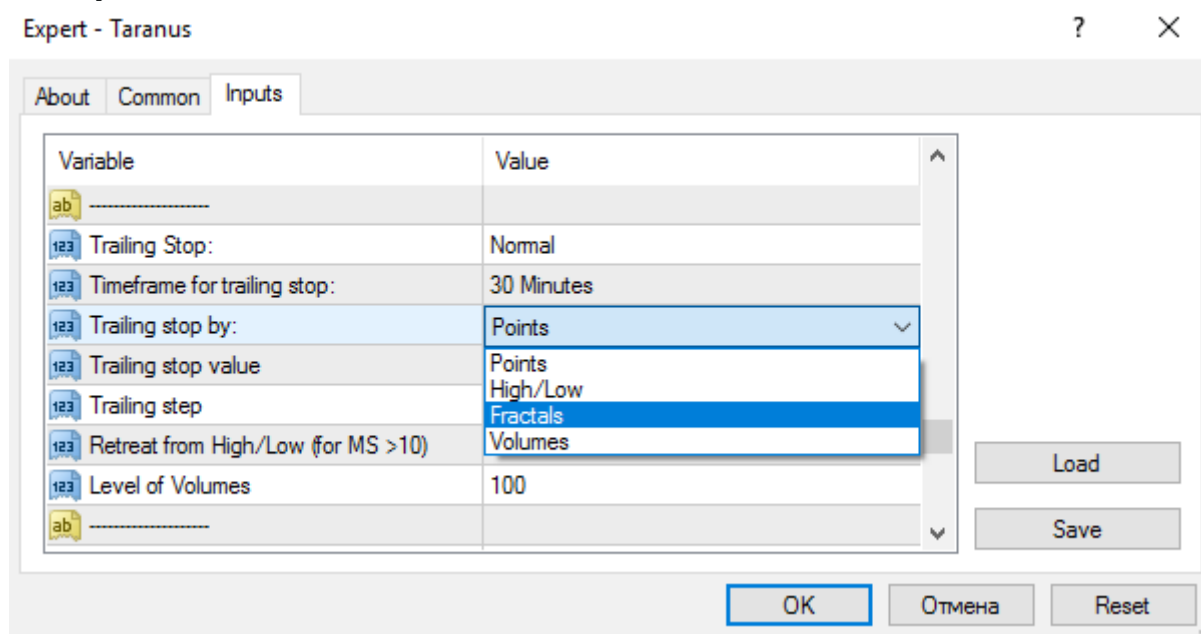
**Trailing Stop by:** – choice of method the trailing stop can be 4 positions:

**Points** – standard trailing stop by points;

**High/Low** – the high/low of the previous bar;

**Fractals** – by fractals;

**Volumes** – by volumes;



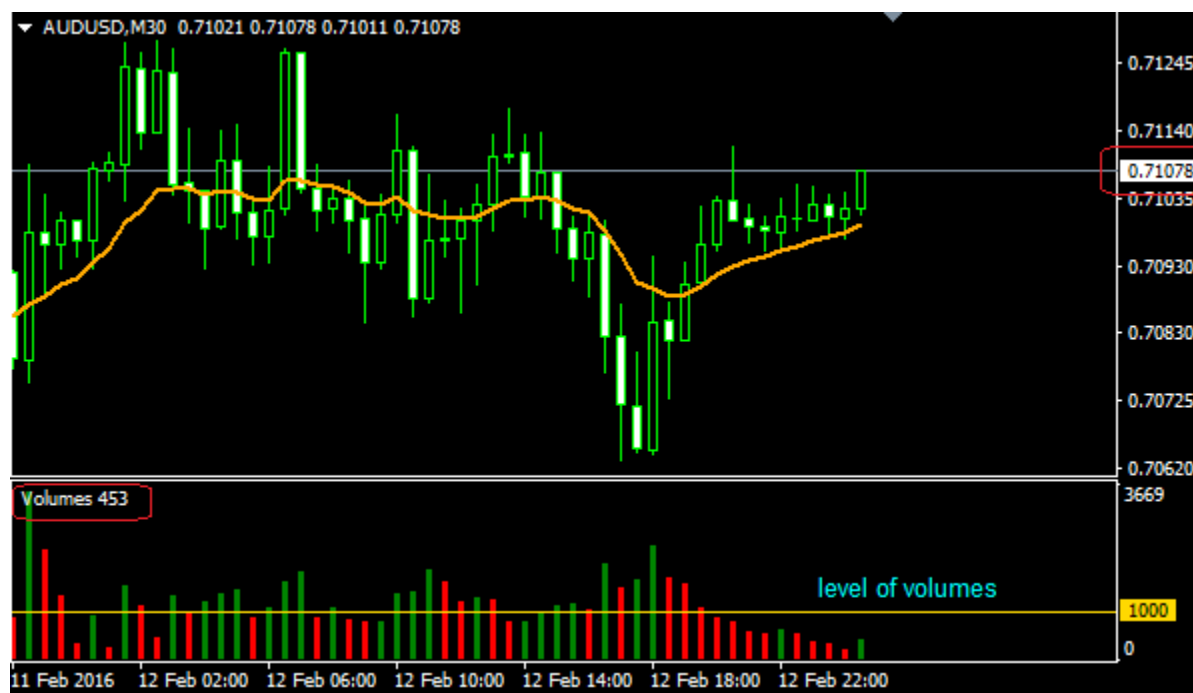
**Trailing stop value** = 30 – trailing stop level in points;

**Trailing step** = 3 – step of trailing: if the profit is 30 points, trailing will move a stop-loss to 3 points;

**Retreat from High/Low (for MS >10)** = 5 - the distance from the stop loss to the high or low of the bar

(fractal), at "Mobile stop loss" not be less than 10;

**Level of Volumes** = 100 - sets the level of volumes. Trailing stop is work if columns of a volume histogram are lower than a pre-set level – 100, if the columns are higher than the level, then trailing will be temporarily disabled, until the columns are lower than the pre-set level, for 5-digit brokers automatically increases to 10.



## Block 8. TRADE BY TIME

Expert - Taranus

? X

About Common Inputs

Variable	Value
ab BLOCK_8	TRADE BY TIME
Enable Hours	false
ab Start of operation time	00:30
ab End of operation time	23:55
ab -----	
ab BLOCK_9	NEWS TRADING
News Trading	false
123 Seconds BEFORE the news	60

Load Save

OK Отмена Reset

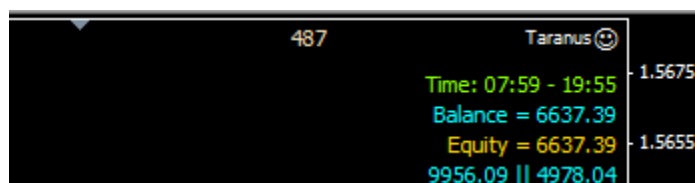
You can set a period of time, during which the Expert Advisor operates. After the set period of time has passed, the Expert Advisor will close all the positions (profitable and losing) and delete all the pending orders. At the start of the new period of time (usually it is the next day) the Expert Advisor will start its operation again.

**Enable Hours** = true – the period of time is enabled, false – the period of time is disabled;  
**Start of operation time** = 00:30 - the time, when the Expert Advisor starts to operate, set in hours and minutes;

**End of operation time** = 23:55 - the time, when the Expert Advisor stops its operation, set in hours and minutes;

There are several options of how to set the operation time of the Expert Advisor:

**1st option:** usual method – the operation time is set in **hours and minutes** a two-spot ( : ) between hours and minutes is put;



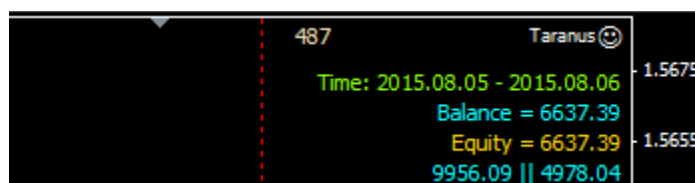
487	Taranus ☺	
Time: 07:59 - 19:55		1.5675
Balance = 6637.39		
Equity = 6637.39		1.5655
9956.09    4978.04		

**2nd option:** setting up a year, a month, a day, an hour and a minute of start and end of the operation. A point is put between a year and a month, and also between a month and a day, then a **space without a point** is put, and afterwards a two-spot ( :) between an hour and a minute is put;



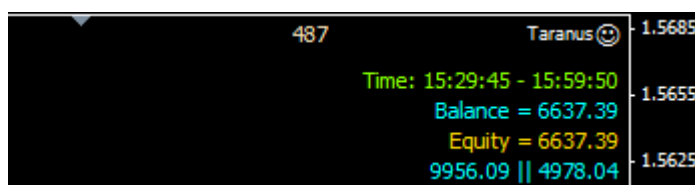
487	Taranus ☺	
Time: 2015.08.05 15:00 - 2015.08.06 10:55		1.5675
Balance = 6637.39		
Equity = 6637.39		1.5655
9956.09    4978.04		

**3rd option:** setting up a day of start and a day of end of the operation are set. A year, a month and a day of start and a day of end of the operation are set up in the Expert Advisor's settings. A point is put between a year and a month, but not after a day. The Expert Advisor will start operation at 00:00 and stop operation at 00:00 on the pre-set day.



487	Taranus ☺	
Time: 2015.08.05 - 2015.08.06		1.5675
Balance = 6637.39		
Equity = 6637.39		1.5655
9956.09    4978.04		

**4th option:** time of start and end of operation can be set **within the accuracy of one second!** A two-spot is put between an hour and a minute, and also between a minute and a second.



487	Taranus ☺	1.5685
Time: 15:29:45 - 15:59:50		1.5655
Balance = 6637.39		
Equity = 6637.39		1.5625
9956.09    4978.04		

In this case we cannot ensure that the Expert Advisor will start and stop its operation within the accuracy of one second: it will largely depend on the quality of quotes arriving from a broker and the quality and the stability of your Internet connection.

## Block 9. NEWS TRADING

The block is intended for automating trading in the news.

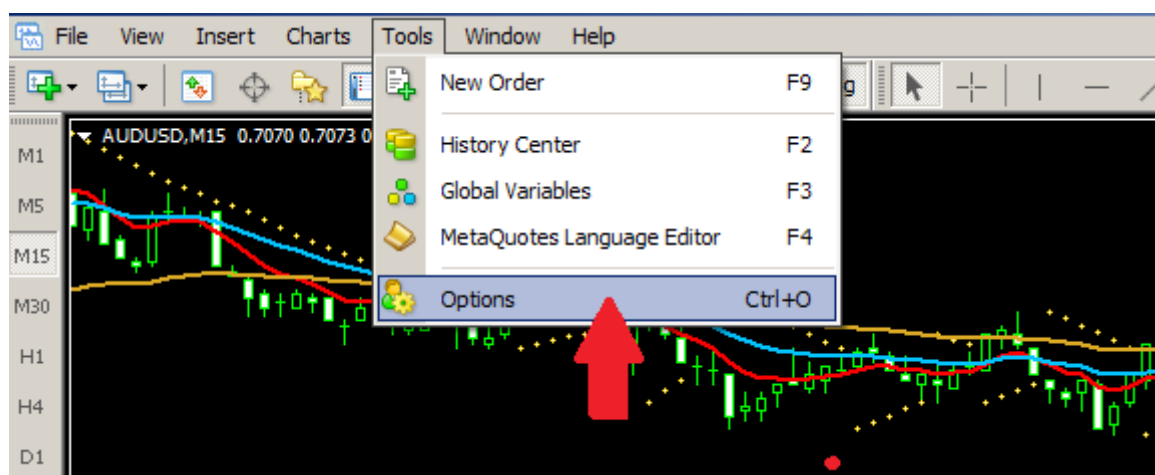
If the Expert Advisor is enabled, it will download a calendar of news from <http://taranus.ru> web-site.

When done, vertical lines indicating the time of the news release will appear on the chart.

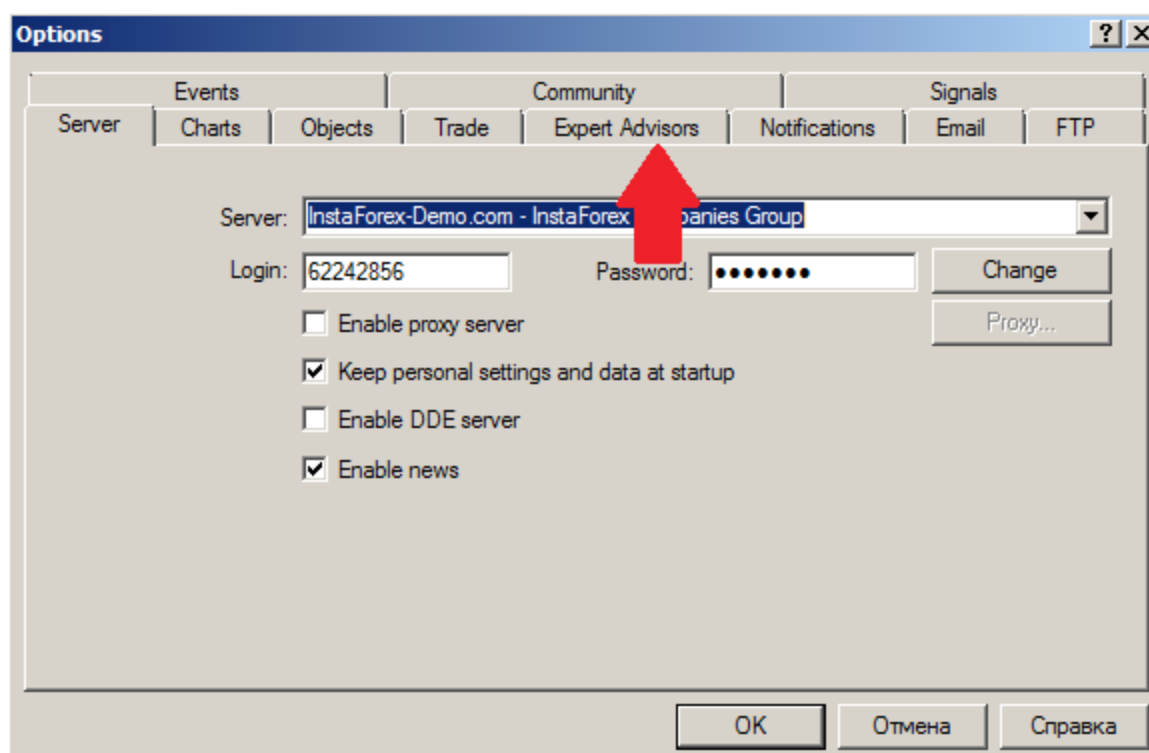
The Expert Advisor will place two pending orders – Buy Stop and Sell Stop – at the interval set in the «interval of the Stop order from the price» parameter 60 seconds before the news release. If these orders are not triggered during two minutes (120 seconds) after the release of news, they will be deleted, and the Expert Advisor will wait for the next news.

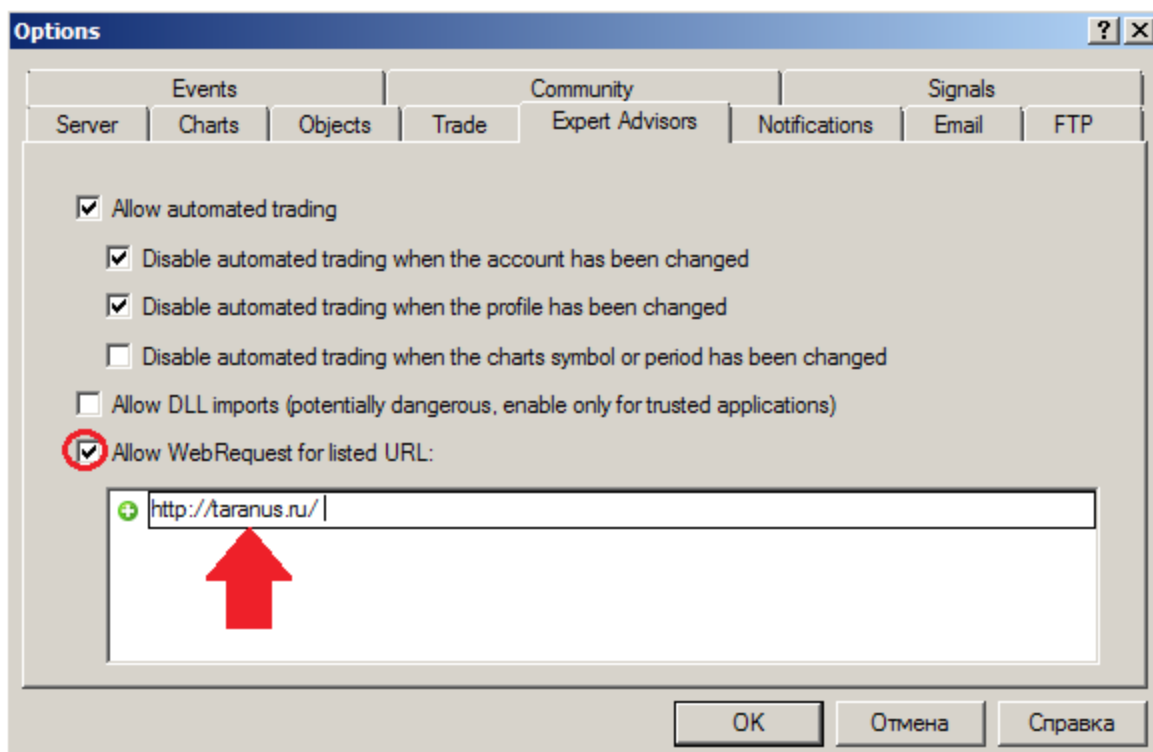
News over the two weeks – the previous and the current weeks – will be displayed on the chart to reduce the load on the terminal.

Open the «**Tools**» tab, select and open «**Options**» so that [Taranus](#) Expert Advisor can download the calendar of news.



Afterwards, open «**Expert Advisors**» tab.





Check «Allow WebRequest for listed URL:» option, press the green “plus” icon («add new URL...») and enter “**http://taranus.ru/**” in the opened line. Then press OK **and restart** MetaTrader 4!!!



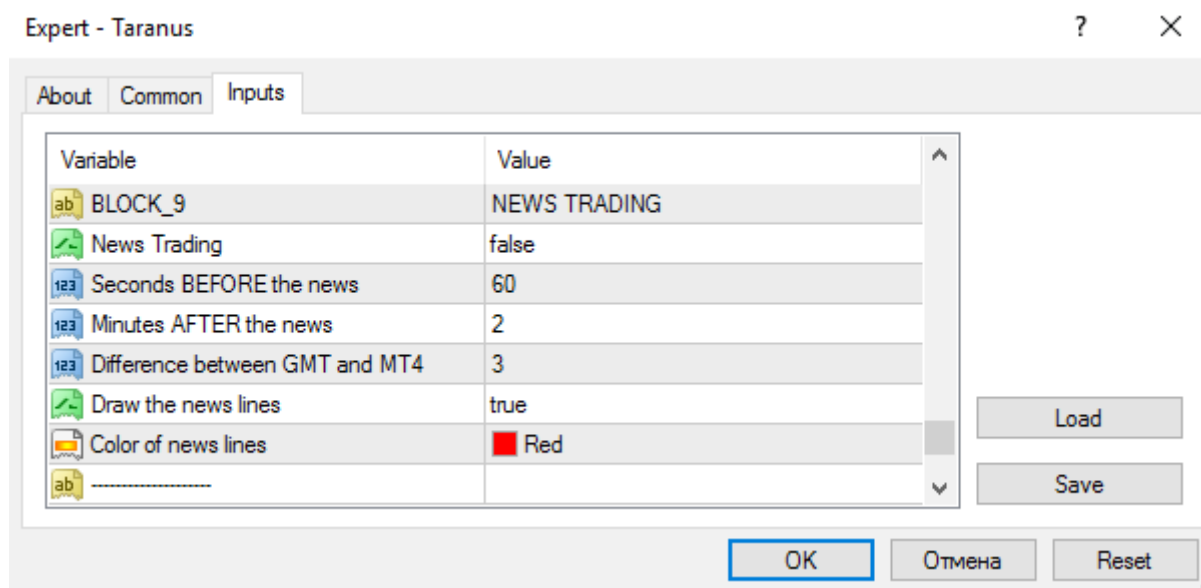
**News Trading** = true/false - enables/disables trading in the news;

**Seconds BEFORE the news** = 60 - the Expert Advisor will place two pending orders – Buy Stop and Sell Stop – 60 seconds before the news release. You can set the required time interval (in seconds) by yourself;

**Minutes AFTER the news** = 2 - if these orders are not triggered during two minutes after the release of

news, they will be deleted, and the Expert Advisor will wait for the next news.

**Important:** if indicators are enabled in the news mode, the Expert Advisor will place only one stop order in the direction indicated by the indicators or not place orders at all, if the indicators generate the opposite signals.



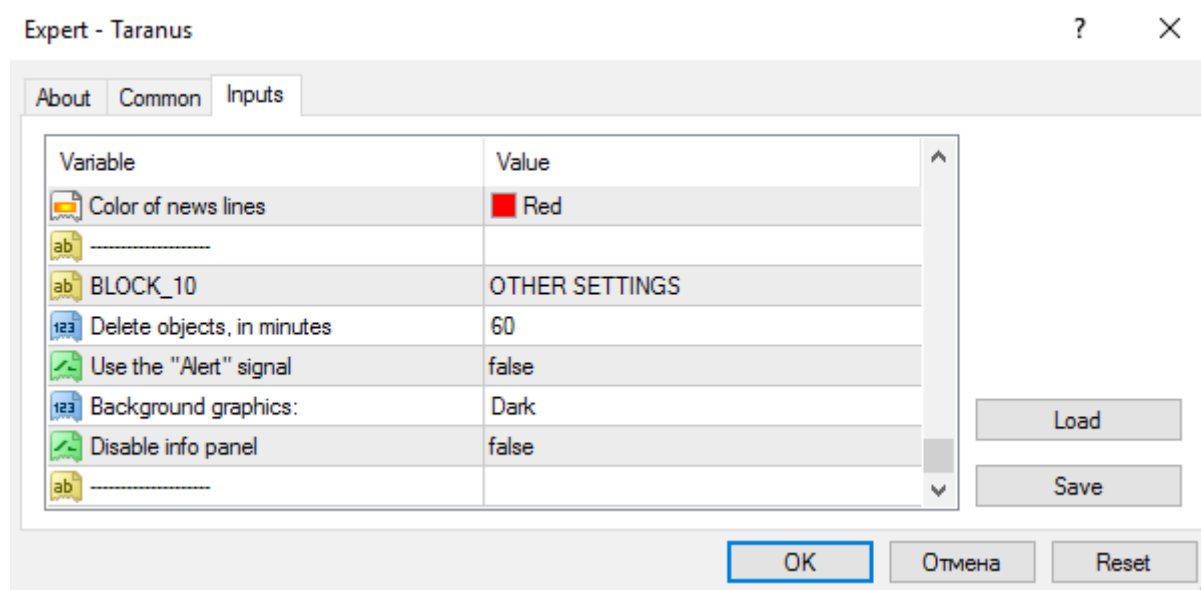
**Difference between GMT and MT4 = 3** - difference in time between MetaTrader 4 time and GMT (2 hours in winter time and 3 hours in summer time);

**Draw the news lines** = true - the lines indicating the time of the news release, if false, then disabled;

**Color of news lines** = Red - enables selection a color of the news lines;

**Important:** you can plot your own vertical line (it doesn't matter, whether it is a dotted or a solid line) on the chart by yourself. When the price approaches the line, the Expert Advisor will treat it as other news lines.

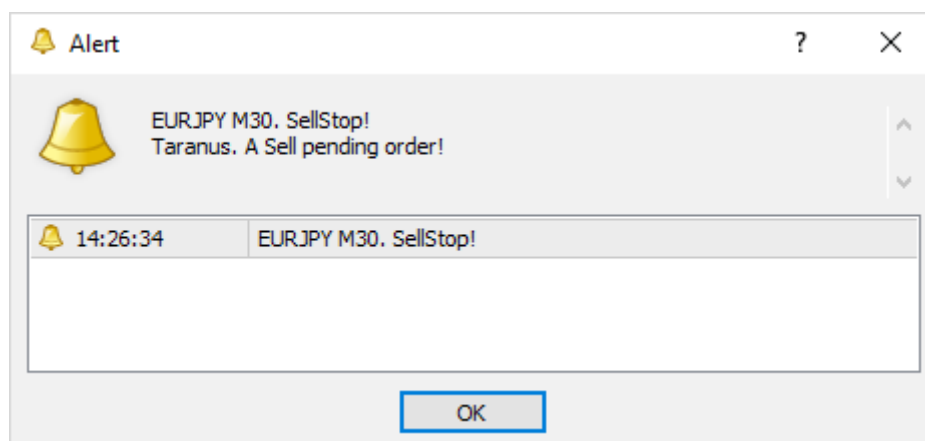
## Block 10. OTHER SETTINGS



**Delete objects, in minutes** = 60 - clears the chart from unnecessary graphical objects (arrows, modified stop-loss and take-profit levels, etc.) in a certain period of time set in minutes (60) passed from the moment, when an object is created;

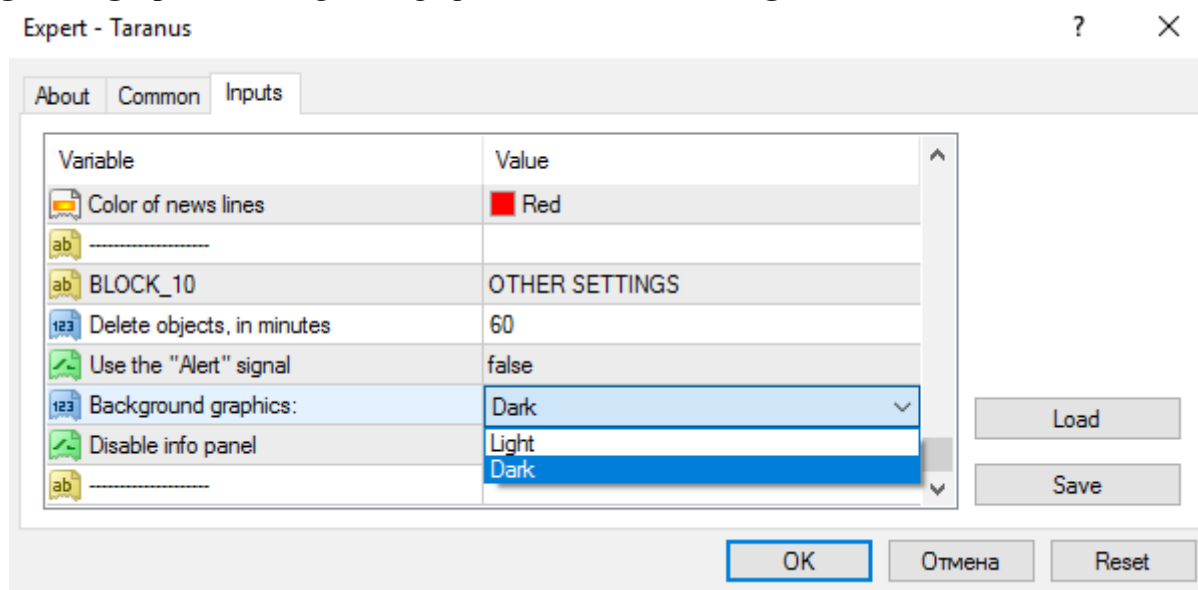
**Use the "Alert" signal** = true, if false, then disabled. A pop-up window accompanied by an audio signal

will appear and notify you about, what chart window (currency pair and timeframe) of the terminal the Expert Advisor has performed an action on. The timeframe of the current window, i.e. the window opened at the moment, is indicated. When pending order is placed, or position of the market order is opened, the Expert Advisor will warn a trader about it by a signal.



**Advice:** if you want the Expert Advisor to show you a message telling you that it has placed pending orders, but a frequent audio signal irritates you, you can turn off its sound in MT4 parameters: go to «Tools» - «Options» - «Events», select «Alert» and double-click on the label with the left mouse button. Red cross icon will appear.

**Background graphics:-** background graphics can be **Dark** or **Light**;



**Disable info panel** = false - set to true, if you wish to remove an info panel and other labels from the chart.

## INFO PANEL

D1	156	Taranus ☺	1.35410
Time: 08:30 - 20:55			1.35105
Balance = 2872.15 USD			1.34805
Equity = 2872.15 USD			1.34500
Profit 100.0 % = 5744.30 USD			1.34195
Loss 80.0 % = 574.43 USD			
AutoLot = 0.10 (4)			
Orders = 0			
Pending orders			

**Time:** – shows the time of the Expert Advisor's operation in hours and minutes according to the MetaTrader 4 terminal's time;

**Balance = 2872.15USD** – current level of account Balance in the deposit currency;

**Equity = 2872.15 USD** – current level of account Equity in the deposit currency;

**Profit = 100.00 % = 5744.30 USD** – profit as a percentage of the current level of account balance, in the deposit currency;

**Loss = 80.00 % = 574.43 USD** – limits a loss in terms of percentage of account balance, in the deposit currency;

**AutoLot = 0.10 (4)** – shows a preliminary result of automatic lot calculation in brackets the maximum number of allowed orders;

**Orders = 0** – shows the number of open orders;

**Pending orders** – the inscription reminds of the type of orders selected for work the Expert Advisor.

D1	156	Taranus 😊	
		Time OFF	0.75645
		Balance = 2872.15 USD	
		Equity = 2872.15 USD	0.75615
		Profit 100.0 % = 5744.30 USD	
		Loss 80.0 % = 574.43 USD	0.75585
		AutoLot = 0.07 (4)	
		Orders = 0	
		Pending orders	0.75555

**Time OFF** – time of the Expert Advisor's operation is disabled;

D1	156	Taranus 😊	1.35410
		Time OFF	
		Balance = 2872.15 USD	1.35105
		Equity = 2872.15 USD	
		Profit 10.0 % = 3159.37 USD	1.34805
		Loss 30.0 % = 2010.51 USD	
		AutoLot = 0.10 (4)	1.34500
		Orders = 0	
		Pending orders	1.34195

**Profit 10.00 % = 3159.37 USD** – the planned profit as a percentage of the current level of account balance and in the deposit currency;

**Loss 30.00 % = 2010.51 USD** – limits a potential loss in terms of percentage of account balance and in the deposit currency. Settings change color to pink when it is on "Gross profit" and "Gross loss".

D1	156	Taranus 😊	1.35830
		Time OFF	
		Balance = 2872.15 USD	1.35430
		Equity = 2872.15 USD	
		Profit 100.0 % = 5744.30 USD	1.35040
		Close by Stops	
		AutoLot = 0.10 (4)	1.34640
		Orders = 0	
		Pending orders	1.34240

**Close by Stops** – the label of pink color warns that «Close by Stops» function is enabled, i.e. the Expert Advisor will close open positions only by stop-loss or take-profit ignoring indicators' signals.

**Important:** if «Gross Profit», «Gross Loss» and «Close by Stops» are enabled simultaneously, the info panel will not change, the «Close by Stops» label will be displayed, but «Gross Loss» and «Close by Stops» functions will be still working. The Expert Advisor will execute the command, which scenario works earlier.

D1	156	Taranus 😊	1.35410
		Time OFF	
		Balance = 2872.15 USD	1.35105
		Equity = 2872.15 USD	
		Close, if Profit	1.34805
		AutoLot = 0.10 (4)	1.34500
		Orders = 0	
		Pending orders	1.34195

**Close, if Profit** – the label of pink color warns that «Close, if profit» function is enabled and all the positions will be closed, when the profit of the account turns to positive. The given info panel doesn't include information about planned profit and loss. The reason for it is that it is the irrelevant data for us here, because all the positions are closed anyway, when the profit turns to positive, and the further trading is stopped.

D1	156	Taranus 😊	1.35830
		Time OFF	
		Balance = 2872.15 USD	1.35430
		Equity = 2872.15 USD	
		Close, if Profit	1.35040
		Close by Stops	
		AutoLot = 0.10 (4)	1.34640
		Orders = 0	
		Pending orders	1.34240

**Close, if Profit** – the label of pink color warns that «Close, if profit» function is enabled;

**Close by Stops** – the label of blue color notifying you that «Close, if profit» function is enabled along with «Close by Stops».

«Close, if profit» function is of the first priority.

D1	156	Taranus 😊	1.35830
		Time OFF	
		Balance = 2872.15 USD	1.35430
		Equity = 2872.15 USD	
		Profit 100.0 % = 5744.30 USD	1.35040
		Loss 80.0 % = 574.43 USD	
		AutoLot = 0.38 (1)	1.34640
		One order only	
		Pending orders	1.34240

**One order only** – enables opening one order in one direction only.

D1	156	Taranus 😊	1.35830
		Time OFF	1.35430
		Balance = 2872.15 USD	1.35040
		Equity = 2872.15 USD	1.34640
		Profit 100.0 % = 5744.30 USD	1.34240
		Loss 80.0 % = 574.43 USD	1.33840
		AutoLot = 0.11 (4)	
		Orders = 0	
		Pending orders	
		SL 360 : TP 1082	

**SL 360 : TP 1082** – enables AutoStop: automatic calculation of stop-loss and take-profit levels based on the market volatility.

D1	156	Taranus 😊	1.35830
		Time OFF	1.35430
		Balance = 2872.15 USD	1.35040
		Equity = 2872.15 USD	1.34640
		Profit 100.0 % = 5744.30 USD	1.34240
		Loss 80.0 % = 574.43 USD	
		AutoLot = 0.10 (4)	
		Orders = 0	
		Market orders	

**Market orders** - only open market orders.

D1	156	Taranus 😊	1.35830
		Time OFF	1.35430
		Balance = 2872.15 USD	1.35040
		Equity = 2872.15 USD	1.34640
		Profit 100.0 % = 5744.30 USD	1.34240
		Loss 80.0 % = 574.43 USD	
		AutoLot = 0.10 (4)	
		Orders = 0	
		Combi orders	

**Combi orders** - at the same time to open market orders and pending orders.

D1	156	Taranus 😊	1.35830
		Time OFF	1.35430
		Balance = 2872.15 USD	1.35040
		Equity = 2872.15 USD	1.34640
		Profit 100.0 % = 5744.30 USD	1.34240
		Loss 80.0 % = 574.43 USD	
		Mini lot = 0.01	
		Orders = 0	
		Pending orders	

**Mini lot= 0.01** - the inscription yellow reports that trade is possible only with minimum lot size - this may be for several reasons: either stop loss = 0 or incorrect value risk, or not enough money in the account so the EA works with the minimum possible lot. To automated calculation of lot working again change the values of risk and stop loss or Deposit the necessary amount.

D1	156	Taranus☺	1.35830
		Time OFF	1.35430
		Balance = 2872.15 USD	1.35040
		Equity = 2872.15 USD	1.34640
		Profit 100.0 % = 5744.30 USD	1.34240
		Loss 80.0 % = 574.43 USD	
		AutoLot off	
		Orders = 0	
		Pending orders	

**AutoLot off** - or stop loss = 0 or risk percentage = 0, EA is not having this data not the can calculate lot size and minimum lot trading. If you don't want to use stop loss, then you can set the lot size manually.

D1	0 is set	Taranus☺	1.35830
		Time OFF	1.35430
		Balance = 2872.15 USD	1.35040
		Equity = 2872.15 USD	1.34640
		Profit 100.0 % = 5744.30 USD	1.34240
		Loss 80.0 % = 574.43 USD	
		AutoLot = 0.11 (4)	
		Orders = 0	
		SL 360 : TP 1082	

**0 is set** – magic number = 0, the EA to follow the orders, opened manually by a trader.

D1	156	Taranus☺	1.35830
		Time OFF	1.35430
		Balance = 2872.15 USD	1.35040
		Equity = 2872.15 USD	1.34640
		Profit 100.0 % = 5744.30 USD	1.34240
		Loss 80.0 % = 574.43 USD	
		Not enough money	
		Orders = 0	
		Pending orders	

**Not enough money** - the label warns that in the account is not enough money for the next order with a predetermined volume of the lot, you need to update your account or reduce the volume of the lot.

**Advice:** “Experts” tab in Terminal window can help you understand, how the Expert Advisor operates.

Time	Message
2016.02.04 16:55:39.788	Taranus_Eng USDCAD,M5: Close orders in the percentage for profit/loss.
2016.02.04 16:55:39.788	Taranus_Eng USDCAD,M5: Close orders in the percentage for profit/loss.
2016.02.04 16:55:39.508	Taranus_Eng AUDUSD,M5: open #289468687 sell stop 0.08 AUDUSD at 0.7209 sl: 0.7239 tp: 0.7059 ok
2016.02.04 16:55:39.178	Taranus_Eng AUDUSD,M5: The trend direction has changed. Pending orders are being deleted.
2016.02.04 16:55:39.178	Taranus_Eng AUDUSD,M5: close #289456804 buy 0.08 AUDUSD at 0.7236 sl: 0.7206 tp: 0.7386 at price 0.7214
2016.02.04 16:55:37.868	Taranus_Eng AUDUSD,M5: initialized

**Advice:** use a Strategy Tester built-in MetaTrader 4 in “**Visual mode**” mode to develop skills and gain a better understanding of principles of **Taranus** Expert Advisor operation.

You can obtain objective results by using “Every tick” mode. If accuracy of the results is not so important, and you want approximate results only, you can select “On the control points” mode. The Strategy Tester will help you in developing your own strategy.

**Advice:** set files – create set files including your own strategies in advance. You can read about how to create a set file and a template in more details on our web-site in the [Settings](#) section.

[www. taranus.ru](http://www.taranus.ru)

2017