

Installing the Range AI Advisor

1. Download the set files from the advisor announcement page.

Recommended conditions and parameters

- Timeframe: M5
- Instruments: CHFJPY, EURNZD, EURUSD, GBPCAD, USDCHF, USDJPY, XAUUSD
- Minimum deposit: \$50 for each currency pair
- Broker: any broker with low spreads and quality execution
- Account type: ECN / RAW Spread / Razor
- Trading time: 24/7
- VPS - recommended

Risk management:

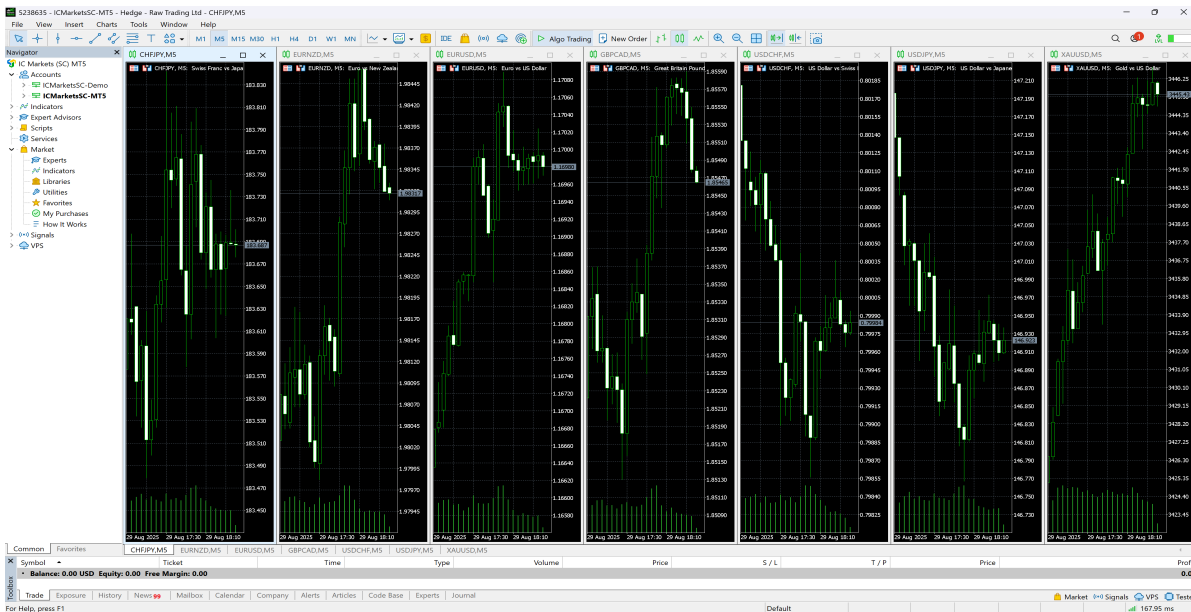
- fixed lot
- automatic lot calculation (auto risk)
- loss recovery system (Recovery)

The advisor is suitable both for beginner traders with small deposits and for experienced professionals working with large amounts.

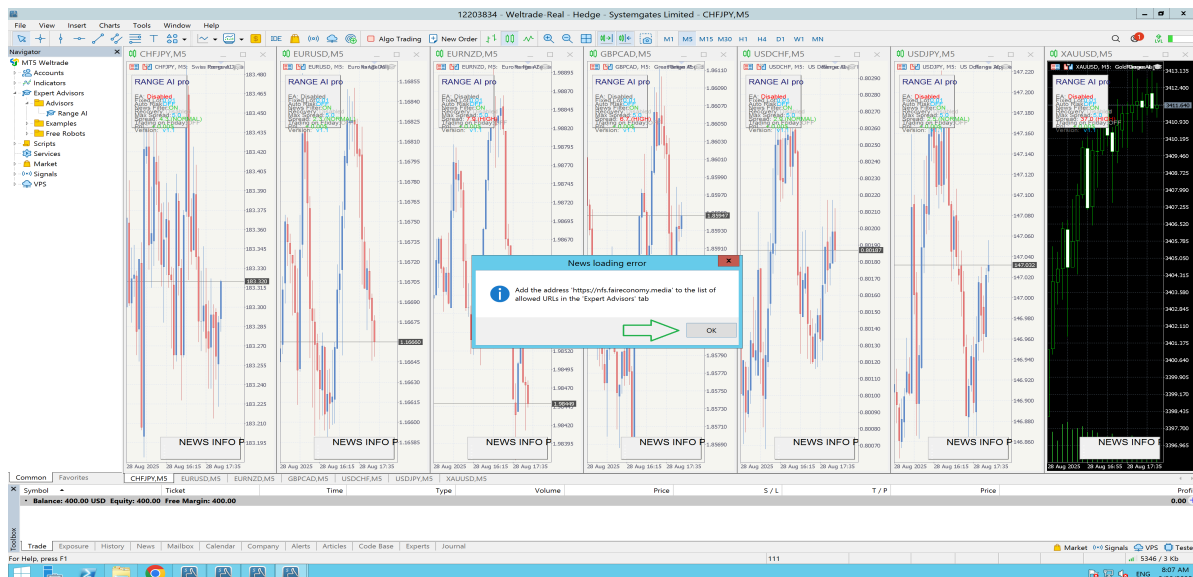
Important!

In the advisor's settings there is a critically important parameter – "GMT shift of your broker". Most brokers such as: (IC Markets, Pepperstone, RoboForex, FxPro, Admiral Markets, Exness, XM, FBS, Alpari) use the standard GMT shift of +3 in summer and +2 in winter. Below you can download and use ready-made set files for brokers with this shift (summer +3, winter +2).
[Download ready-made sets for brokers with GMT winter +2 / summer +3](#)
Attention! If your broker has a different GMT shift, please contact me and I will prepare individual set files for you with the correct GMT shift.

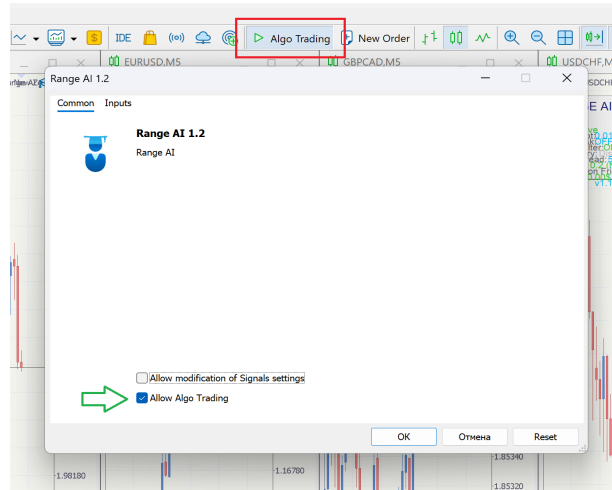
2. Open all the necessary currency pairs from the list in the trading terminal. Timeframe M5



3. Add an advisor to each chart and download the corresponding set file for each currency pair. When adding an advisor, a pop-up window with the news URL will appear, just click OK, we will connect the URL a little later.



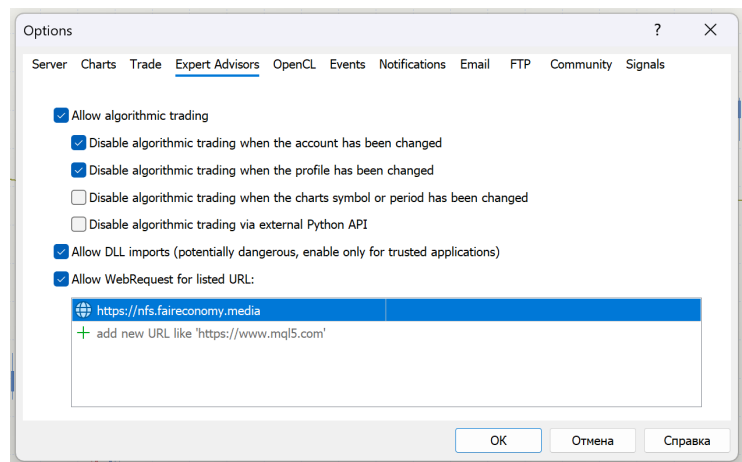
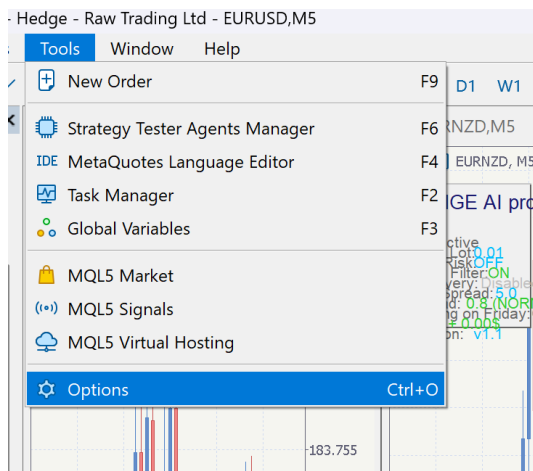
4. When adding an advisor to the chart, also do not forget to check the box "allow algo trading" and do not forget to click the button "algo trading" at the top of the terminal



5. Add the news URL <https://nfs.faireconomy.media> to the list of allowed ones. To do this, go to tools - options.

Write the URL <https://nfs.faireconomy.media>

And check the boxes as in the photo



6. Restart your terminal.

At this point, the installation of the advisor is complete.

You will see a list of news and lines on the chart.

