



RTR Quick Manual - Expert Advisor Setup

Getting Started

This manual will get you set up in 15 minutes, Expert Advisors for live trading or back testing In the MT5 Strategy Tester.

Retail Trading Realities Ltd
12/29/2024



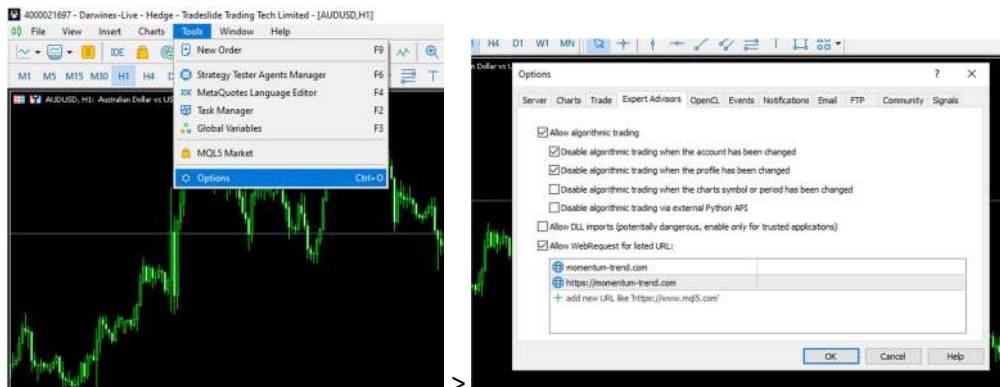


page	Content
2	Enable Web Requests in MetaTrader 5.
2	Expert Advisor Directory.
3	Load EA on Chart.
4	SET File Load/Save.
6	Change Risk Settings.
7	Add Symbols in Market Watch.
8	VPS (Virtual Private Server) / MT5 VPS Optimization.
11(Extra)	How to use MT5 Strategy Tester, for back testing, load Set files etc...

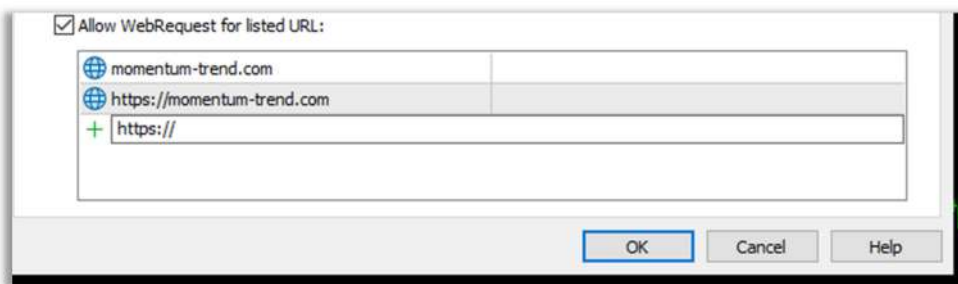


Allow EA Web Requests

MT5 Terminal > Tools> Options> Expert Advisors (Tab)

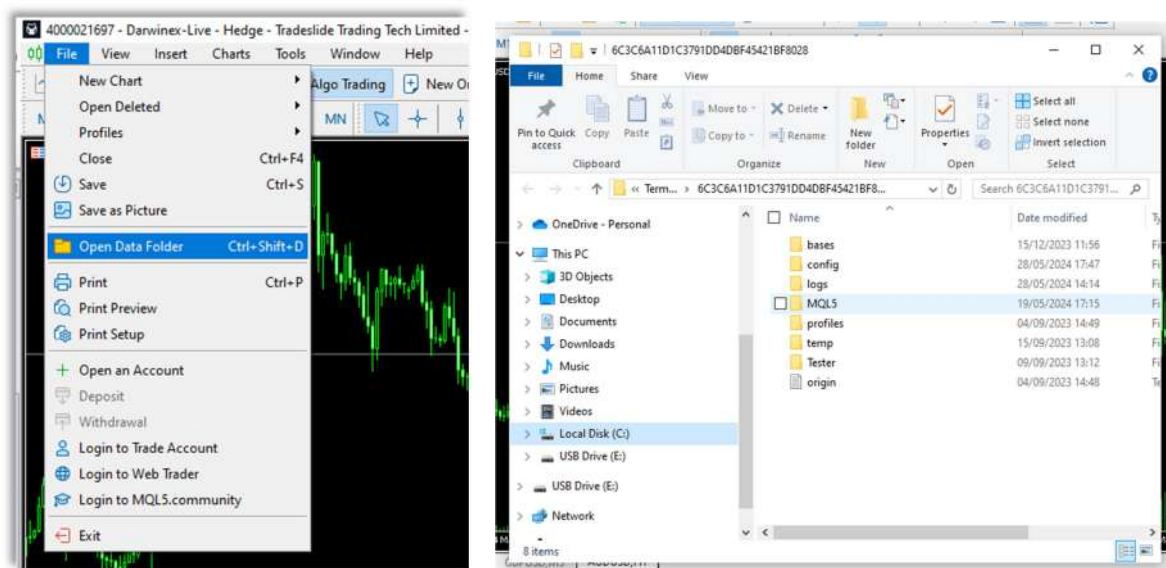


> type in **"https://momentum-trend.com"** , then Press OK.



Expert Advisor Directory

File > Open Data Folder > MQL5 > Experts> put your Expert Advisor (EA) in this folder.

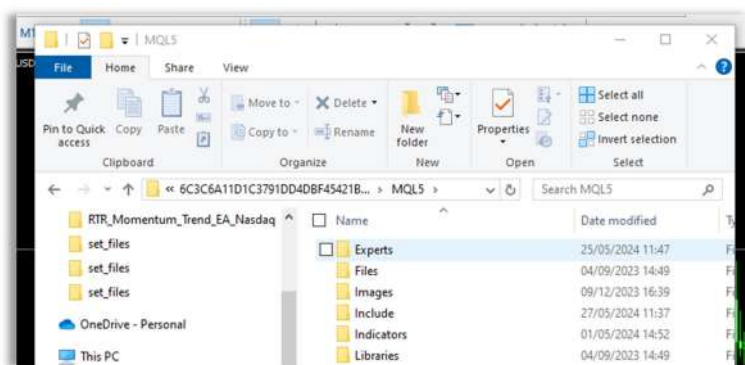


>Open Data Folder 'Ctrl+Shift+D'

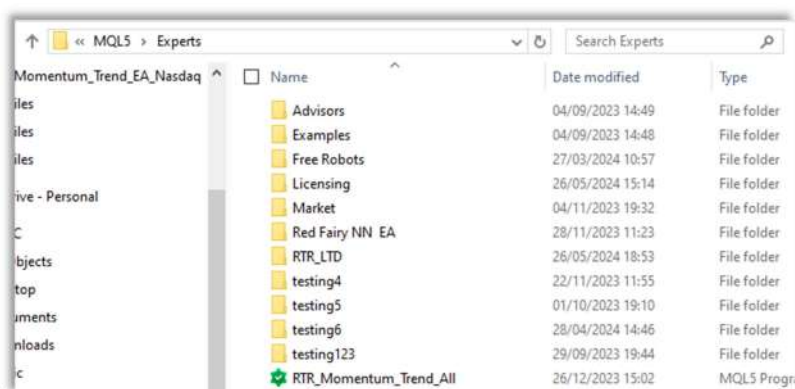


RTR Quick Manual - Expert Advisor Setup

>MQL5 Folder

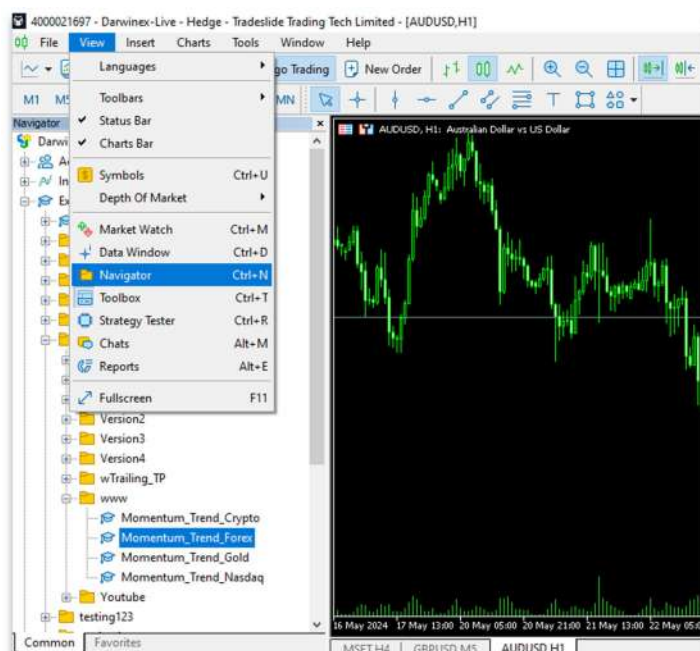


>Experts Folder

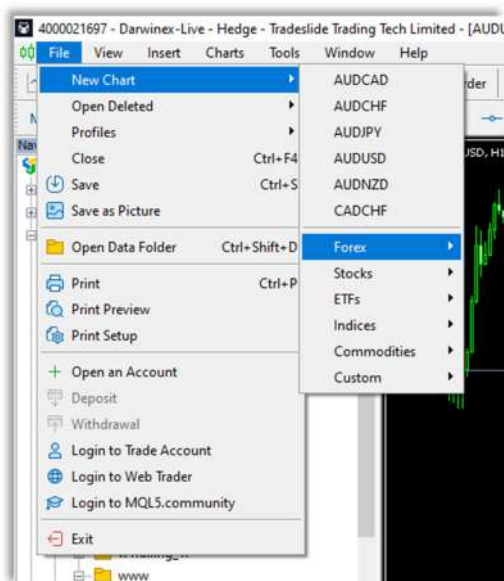


Load EA on Chart

MT5 Terminal> View> Navigator> Expert Advisors



Now File> New Chart > “find your chart symbol e.g. USDJPY” > drag and drop EA from Navigator onto the chart>check Allow Algo Trading> ”type in your password” (required) > click load> Load SET file usdjpy_m15 > change chart time frame to M15.



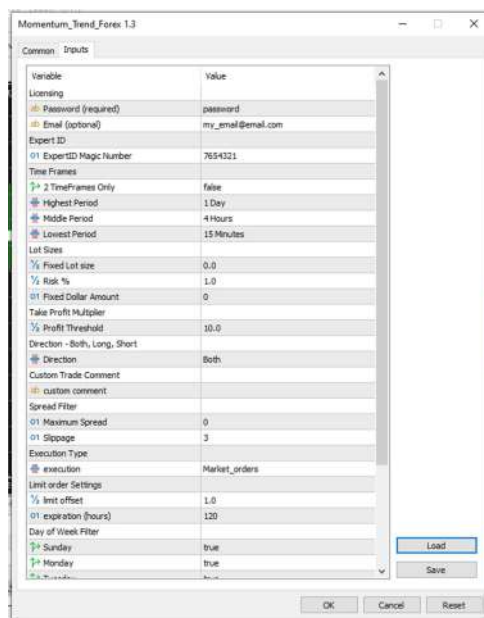
Note: Every time you load an EA onto a Chart you must give it a new Magic Number i.e. 56823798.

Magic Number is in the inputs tab; make sure it is at least 5 digits long.

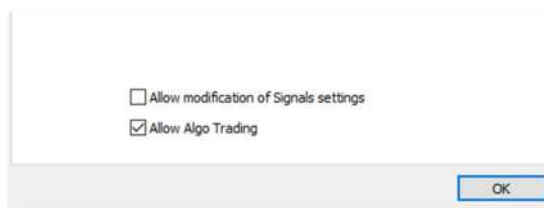
Every Instance of an Expert Advisor must have a new unique Magic Number.

So that there is no confusion between strategies that have the same symbol, but not necessarily the same settings.

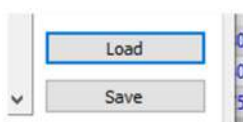
> drag and drop EA from the Navigator onto the chart .



> check “ [] Allow Algo Trading” (Common Tab).



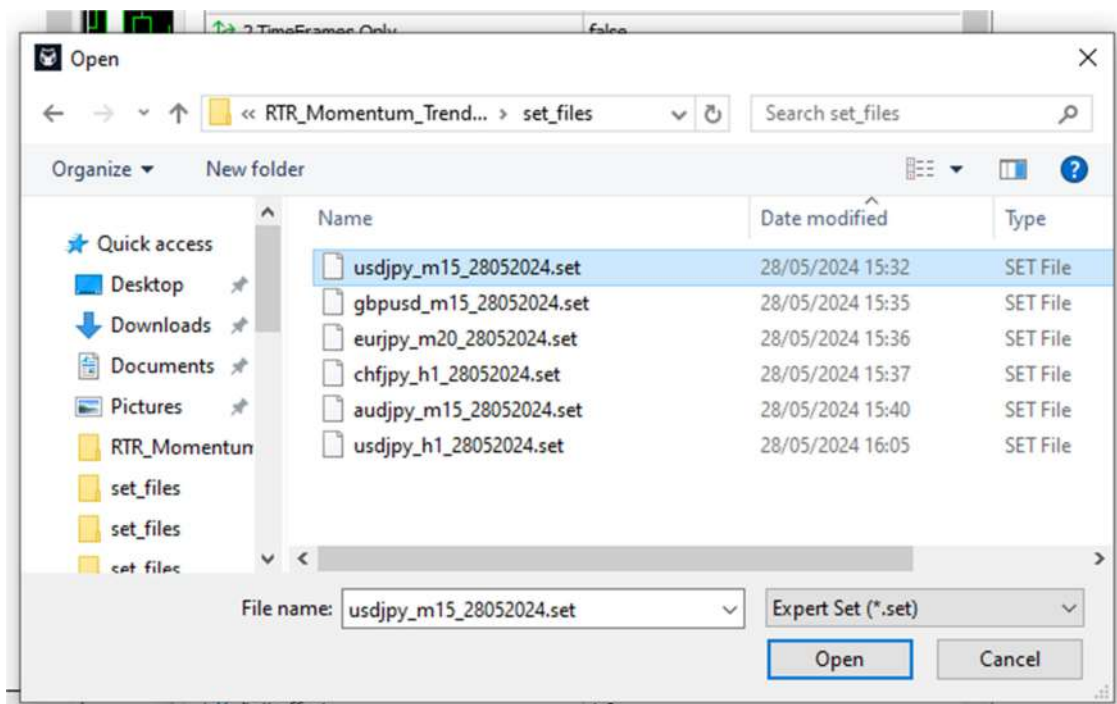
? click “Load” .



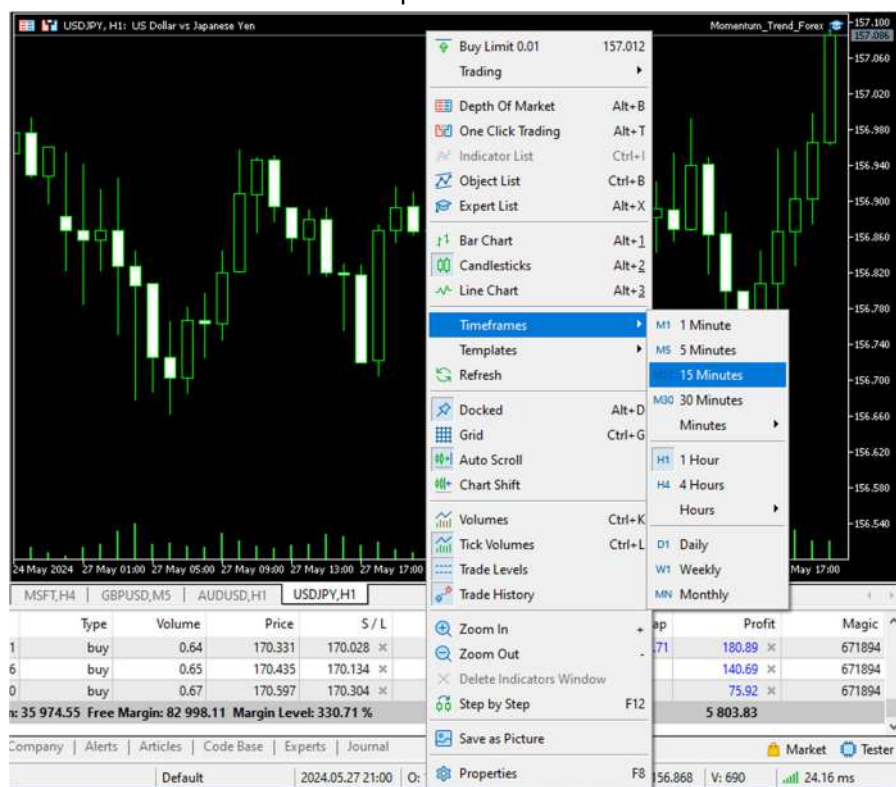
➤ Load the SET file for your symbol



RTR Quick Manual - Expert Advisor Setup



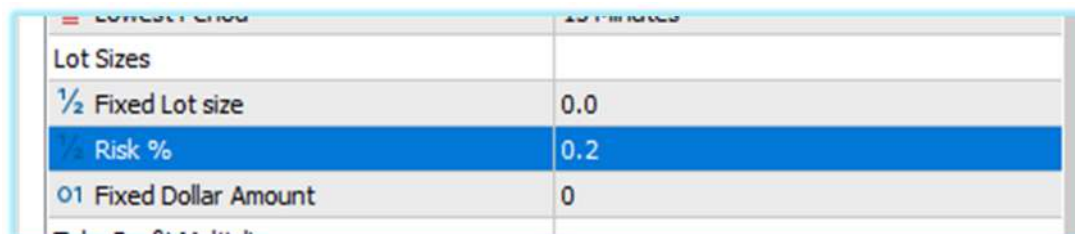
- Now change the Time Frame of the Chart to match the SET File name, i.e usdjpy_m15, must be placed on M15 chart. Right click on the chart > Timeframes > M15
 - Note if you have multi symbol EA - an Expert Advisor that trades multiple Symbols from 1 chart . Please drop the EA onto a Forex 5 Minute Chart. Thank You.





That is done, now you must change the risk in all **SET Files**. (Please Read the manual)

Change Risk Settings



Lot Sizes	
1/2 Fixed Lot size	0.0
1/2 Risk %	0.2
01 Fixed Dollar Amount	0

The '**Risk %**' input is the percentage % of account balance the EA will risk per trade.

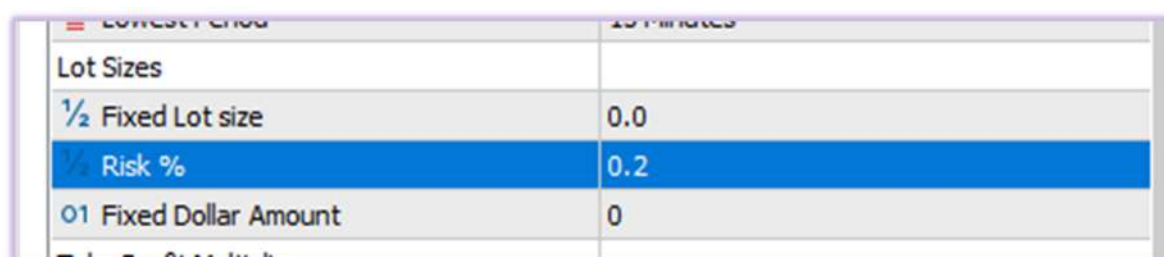
1.0 = 1.0% is the absolute **maximum** risk and should only be used if you are trading only 1 symbol i.e. **GOLD/USD**.

If you are trading **5** symbols (that is **5** charts with attached EAs) then the "Risk %" input on all Charts should be absolute maximum = $1\% \div 5$, which is equal to 0.20

You would type in "**0.20**", **Risk % =0.20**.

I am only using half of that, in my main Index Signal.

For Crypto I am using full Risk of = $1\% \div (\text{number of symbols})$, however I have a smaller initial deposit, that is 5 times smaller than my deposit for my main Darwinex account (non-crypto).



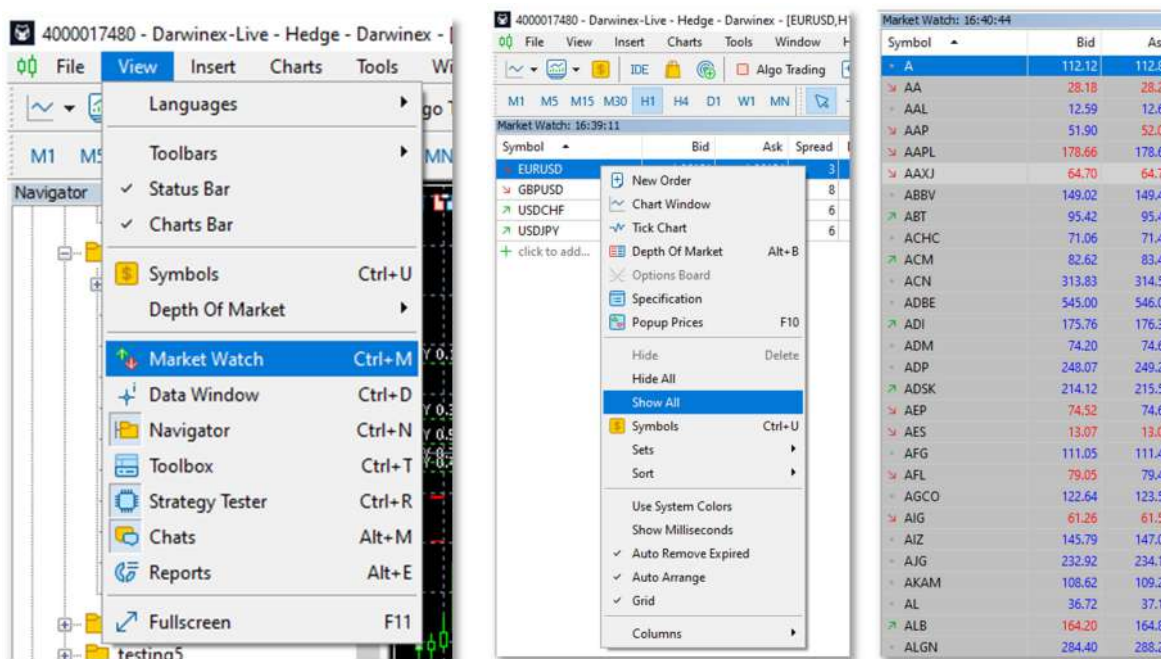
Lot Sizes	
1/2 Fixed Lot size	0.0
1/2 Risk %	0.2
01 Fixed Dollar Amount	0

Okay, now you can enjoy your trading.



Add Symbols to Market Watch Can't Find your Symbol, stock ticker, Chart?

If you cannot find your Ticker Symbol, MT5 Terminal > View > Market Watch...> right click any ticker inside Market Watch > Show All,



After you have all your desired symbols, return to Market Watch> right click any ticker > Hide All.

This way Market Watch is not running in the background using up CPU resources, looking at ticker quotes you are not interested in.

(Also While you are in Market Watch > Right Click any ticker> Columns > Spread. Shows all Bid-Ask spread in points.)



How to setup EA with a Windows Server VPS

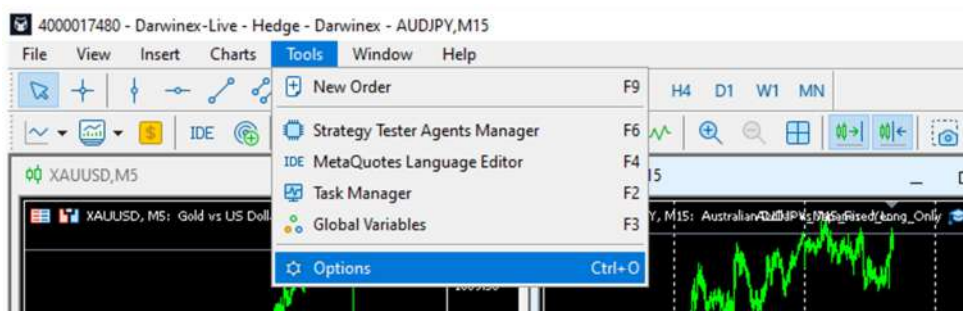
Windows Server 2012/2019/2022

Summary: Windows Server 2012 – is like Windows 7 PC, Windows Server 2019/2022 – is like Windows 10 PC.

ForexVPS.net Offer: <https://www.forexvps.net/partner/retailtradingrealities>

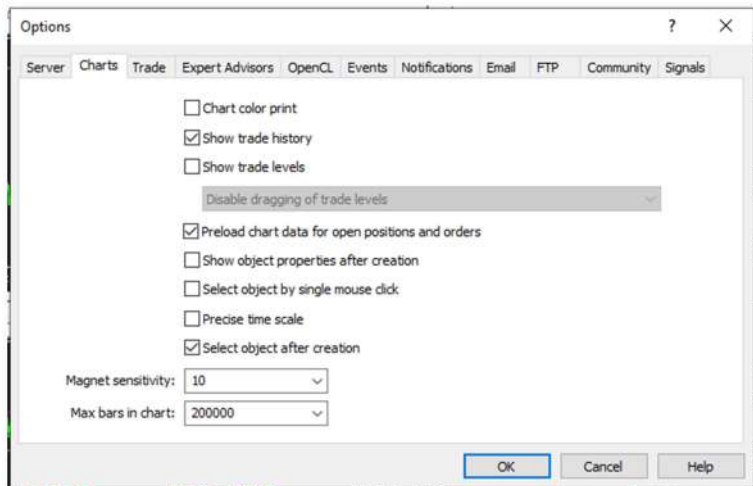
We also recommend <https://www.mql5.com/en/vps>, fastest ping.

Download and Install your MT5 like you would on a Windows 10/11 PC.



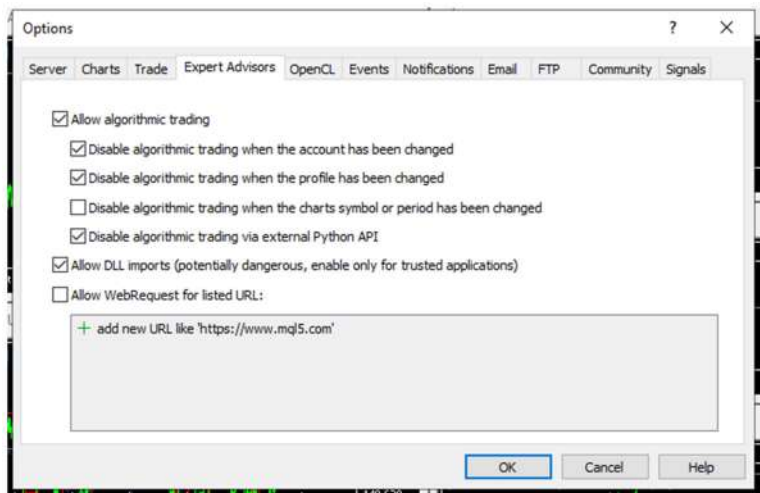
Copy my Settings:

MT5 Terminal > Tools> Options > Charts

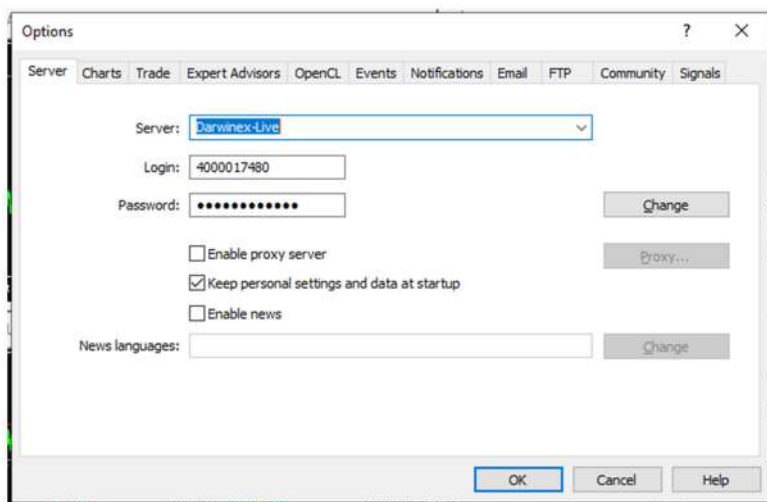


MT5 Terminal > Tools> Options > Expert Advisors

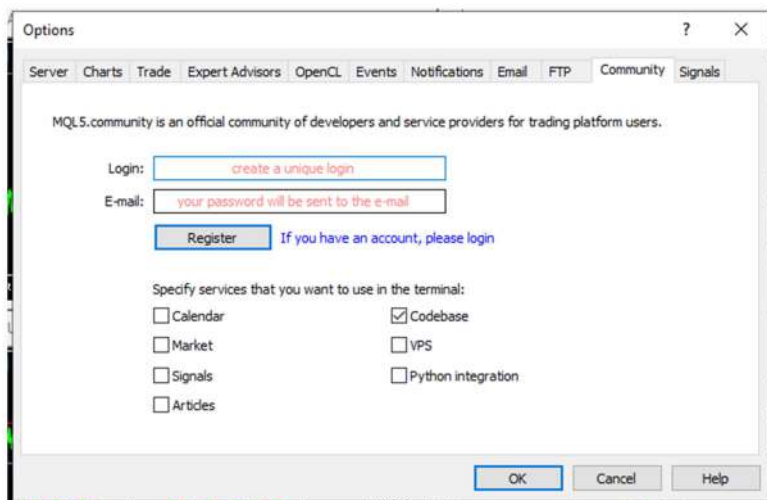




MT5 Terminal > Tools> Options > Server



MT5 Terminal > Tools> Options > Community





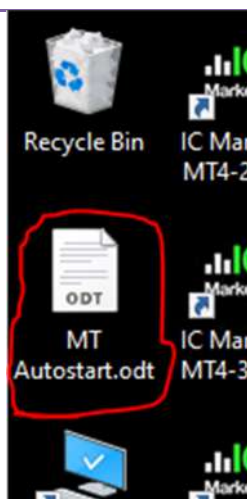
Final VPS step:

Once you have all Charts, Time Frames and Symbols you want use in view, go to View>Market Watch> right click any ticker, click > **'Hide All'**.

This will stop MT5 reading quotes in the background, from tickers/symbols the EA is not trading on.



MT4/5 AUTO START for VPS:



We at Retail Trading Realities are using ForexVPS.net, and they have this feature, where you can use their .exe program to Auto-Start all of your MT4/5 Terminals every time the server restarts. Remember You will have to restart your Server every now and then, but also your VPS provider will restart servers for maintenance.

You will have to enable this manually by reading the steps in the .ODT text file (usually on the Desktop).

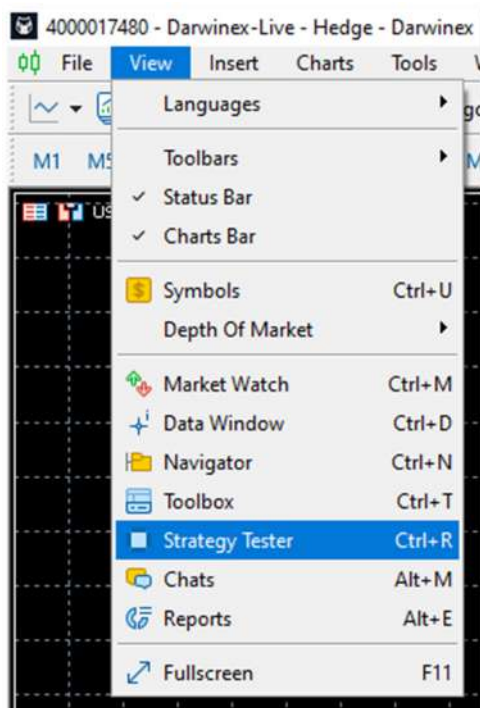
Other Forex VPS providers also have this feature (nearly all of them).

You won't need to do this if you have a server provided by MetaQuotes from MQL5.com .

Do not use a Linux server with MT4/5.

Strategy Tester & Optimizer in MT5 – What is it?

MT5 Terminal > View > Strategy Tester



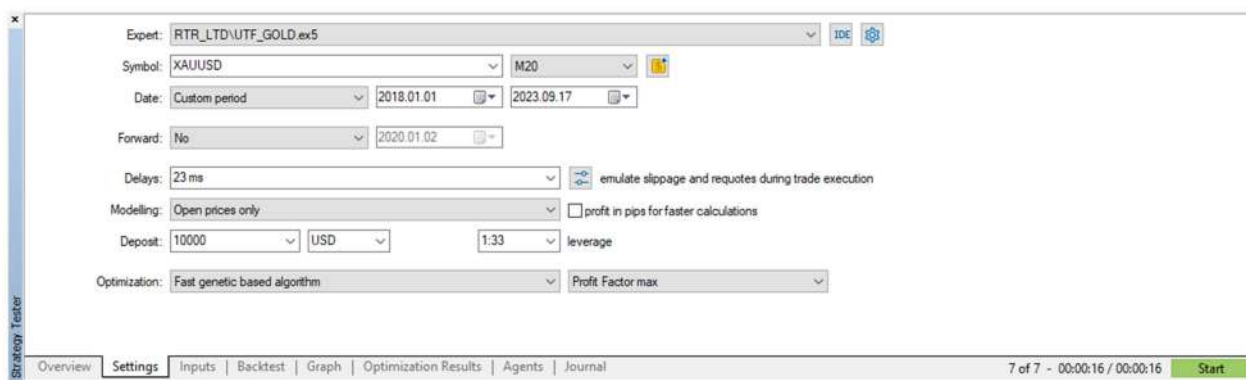
To back test an Expert Advisor, you can run a Single tests, and Optimizations in MT5 Strategy Tester.

Optimizations will look at the input parameters (see Inputs Tab of Expert) you have selected and all the values you wanted the EA to be tested for. It will test all possible combinations of settings. Be careful it is recommended you choose only up to 3 inputs for optimization. The more inputs selected the more chance of 'curve fitting'.

If you choose too many inputs and step settings, i.e. 2,000 combinations, MT5 will revert to a 'genetic algorithm', to find best settings, it won't test every combination. It will test a sample and try to find the best settings using their in-house secret algo.



RTR Quick Manual - Expert Advisor Setup



Choose Symbol and the Chart Period you would have placed the Expert Advisor on, if it were live trading.



The Yellow Dollar sign Icon is very important, to new users of MT5 strategy tester.

You will need to click on this Icon, to change the selected Symbols' defaults for a correct back test. Its' default is either; (No Leverage) 'CFD' and 'Forex No Leverage'. Here you will change it **to 'CFD Leverage' or 'Forex'.**



You can also change the default Direction from 'Full Access' to 'Long only' or Short Only', this change in direction set here, will only work for back tests and optimizations, this will not change in Live or Demo trading.

Modelling Data: using Open Prices (the RTR Momentum Trend Expert is coded On Open Prices – OnBar()), or simulated ticks called 'Every Tick', 'Every tick based on Real Ticks' include Broker historical Bid-Ask Spread, there is also a 1 minute bar option for the data.

Note: Back tests that have Real Tick selected will take a lot longer than on 'Open prices' modelling.



RTR Quick Manual - Expert Advisor Setup

I suggest Optimizations using 'Open Prices', then Run Single Back test using 'Real Ticks'.

Start	Step	Stop	Steps
55555	1	55550	

START, STEP, STOP:

START, is the first value of the input that will be tested.

STEP, is the increment, it will add to the previous value of the input that was tested, and will run a new test.

STOP, is the Last value of the input that will be tested for.

So in this Example we have selected only 1 input for Optimization, Profit Threshold.

We Start at 8, STEP (increment)= 2, FINISH at 20.

We will test Profit Threshold at; 8, 10, 12, 14, 16, 18, 20.

And there are 7 Passes (8 to 20).

Select expert... View previous optimization results

Variable	Value	Start	Step	Stop	Steps
<input type="checkbox"/> ExpertID Magic Number	671894	55555	1	55550	
Time Frames, if 2 TF only, Middle Period will be ignored					
<input type="checkbox"/> 2 TimeFrames Only	false	false		true	
<input type="checkbox"/> Highest Period	1 Day	current		1 Month	
<input type="checkbox"/> Middle Period - ignored when 2 TimeFrames = true	1 Hour	1 Hour		4 Hours	
<input type="checkbox"/> Lowest Period - must attach EA to this chart	20 Minutes	15 Minutes		1 Hour	
Stop Lot Sizes					
<input type="checkbox"/> Fixed Lot size e.g 1.32 lots, ignored if 'Risk %' is used	0.1	0.1	0.01	1.0	
<input type="checkbox"/> 'Risk %' per Trade 1.00 = 1% Risk, 0.50 is half%	1.0	0.01	0.001	0.1	
Fixed \$Dollar Amount. Leave as 0 if not intended to use					
<input type="checkbox"/> Fixed \$Dollar Amount per Trade.	0	0	1	10	
Take Profit Multiplier					
<input checked="" type="checkbox"/> Profit Threshold	10.0	8	2	20	7
Direction - Both, Long only, Short only					
<input type="checkbox"/> Direction	Both	Both		Short_Only	
Custom Trade Comment					
<input type="checkbox"/> custom comment					
Spread Filter					
<input type="checkbox"/> Maximum Spread	60	30.0	3.0	300.0	
Day of Week Filter					
<input type="checkbox"/> Sunday	true	false		true	
<input type="checkbox"/> Monday	true	false		true	
<input type="checkbox"/> Tuesday	true	false		true	
<input type="checkbox"/> Wednesday	true	false		true	
<input type="checkbox"/> Thursday	true	false		true	
<input type="checkbox"/> Friday	true	false		true	
<input type="checkbox"/> Saturday	true	false		true	
Hour of Day Filter					
<input type="checkbox"/> Start operation hour	00:00	00:00		23:00	
<input type="checkbox"/> Last operation hour	23:00	00:00		23:00	

Strategy Tester Overview Settings Inputs Optimization Results Agents Journal 112 of 112 - 00:05:26 / 00:05:26 Start



RTR Quick Manual - Expert Advisor Setup

Select expert...		View previous optimization results							Select criterion	
Pass	Result	Profit	Total trades	Profit factor	Expected payoff	Drawdown %	Recovery factor	Sharpe ratio	Profit_Threshold	
0	1.81	51104.62	318	1.81	160.71	34.14	3.53	1.68	8	
1	1.85	70448.05	339	1.85	207.81	30.16	3.05	1.54	10	
2	2.23	203867.70	347	2.23	587.51	26.42	3.48	2.07	12	
3	1.59	52245.76	401	1.59	130.29	47.01	0.95	0.91	14	
4	1.59	70564.82	417	1.59	169.22	47.07	0.98	0.96	16	
5	1.74	135499.55	439	1.74	308.66	47.09	1.05	1.08	18	
6	1.44	93071.71	454	1.44	205.00	47.47	1.00	0.82	20	

Strategy Tester

Overview | Settings | Inputs | Optimization Results | Agents | Journal

7 of 7 - 00:00:11 / 00:00:11 Start

Source: https://www.metatrader5.com/en/terminal/help/algotrading/strategy_optimization

Retail Trading Realities Ltd
Company number 15221732

71-75 Shelton Street,
Covent Garden,
London, WC2H 9JQ,
United Kingdom

W: <https://momentum-trend.com>

E: contact@retailtradingrealities.com