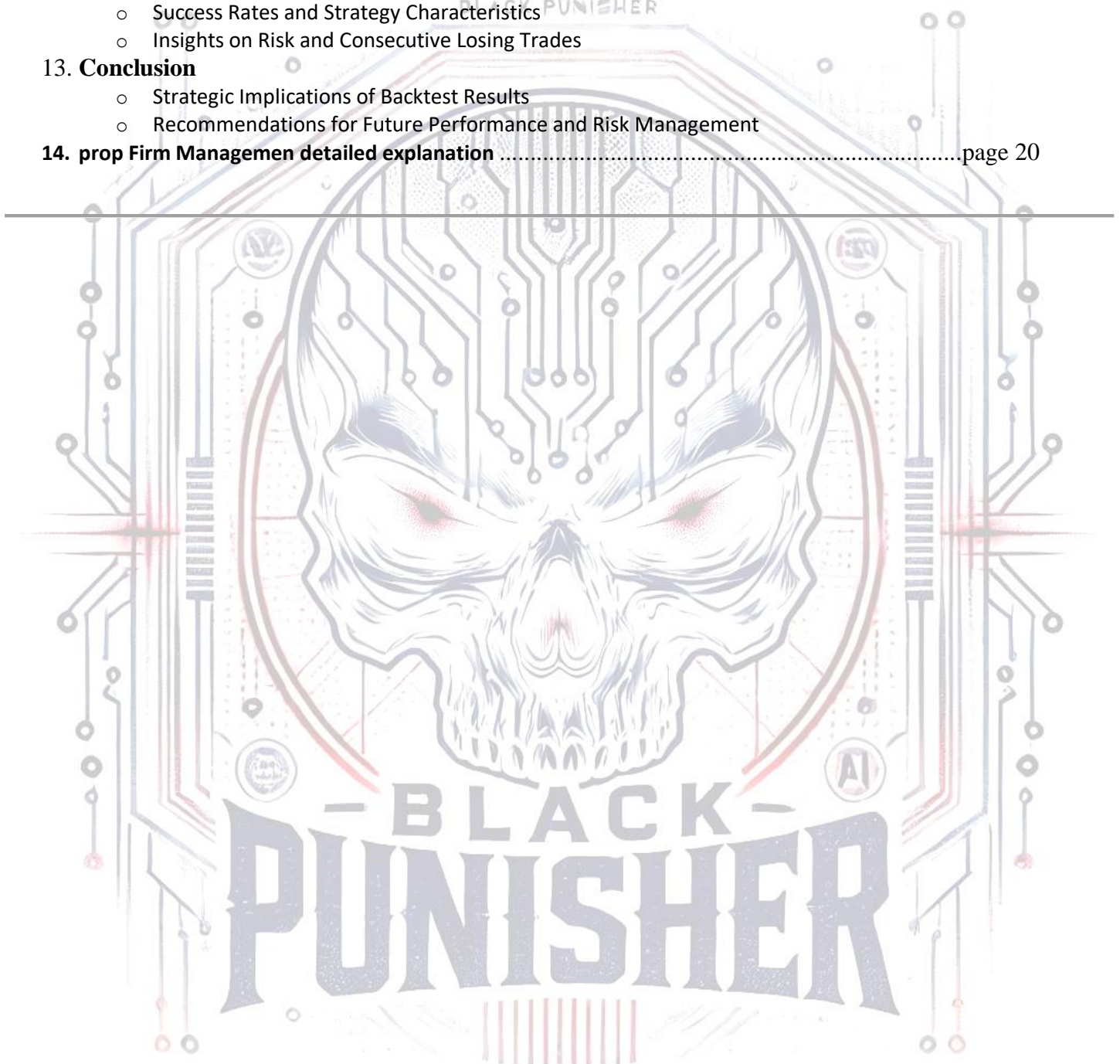


Table of Contents for "Black Punisher Expert Advisor" Document

1. Introductionpage 03
○ Overview of the Black Punisher Expert Advisor	
○ Supported Timeframes and Features	
2. Key Features	
○ Risk-Free Strategies	
○ AI Integration	
○ Support and Resistance Data	
○ High Liquidity and Volatility Zones	
○ Loss Recovery Strategy	
○ Smart Profit Tracking	
○ Liquidity and Volatility Analysis	
○ Advanced Risk Management	
3. Trading Strategies	
○ Support and Resistance Strategy	
4. Compatibility and Operating Environment	
○ Supported Symbols and Timeframes	
○ System Requirements	
○ Broker and Account Type Compatibility	
5. Customizable Settings	
○ Lot Size and Risk Settings	
○ AI and Loss Recovery Configurations	
6. Performance and Testing	
○ Historical Backtesting	
○ Key Performance Indicators	
7. Compatibility and Operating Environmentpage 05
8. Why Trade the Dow Jones US30 Index?page 06
○ Representation of Major U.S. Companies	
○ Ease of Tracking and Understanding	
○ Long-Term Historical Data	
○ Focus on Leading Companies	
○ Effective Analytical Tool for Investors	
○ Relative Stability	
○ High Liquidity	
9. Installation Stepspage 07
○ Step-by-Step Guide	
○ Resolving Connection Issues	
10. Explanation of Settingspage 12
○ Part One	
▪ Strategy 1+2 Parameters	
▪ Smart Trailing AI Points for Strategy 1+2	
○ Part Two	
▪ Percentage Management	
▪ Control Old Pending Trades	
▪ Money Management	
▪ PROP FIRM MANAGEMENT	
▪ Indicator Settings	
▪ Closing and Deleting Orders on Friday	
▪ Other Settings	

11. Introduction to Backtest Analysis	page 17
○ Overview of Backtesting and its Limitations	
○ Link to Myfxbook: <i>Black Punisher Medium Risk Backtest</i>	
12. Trading Performance Analysis Based on Provided Data	page 18
○ Key Metrics (e.g., Total Trades, Pips, Average Win/Loss, and More)	
○ Success Rates and Strategy Characteristics	
○ Insights on Risk and Consecutive Losing Trades	
13. Conclusion	
○ Strategic Implications of Backtest Results	
○ Recommendations for Future Performance and Risk Management	
14. prop Firm Managemen detailed explanation	page 20



Black Punisher Expert Advisor

The Black Punisher is an advanced automated trading expert advisor designed specifically for trading the US30 index. It operates on 30-minute (M30) and 1-hour (H1) timeframes, integrating artificial intelligence (AI), including deep learning and neural networks, to analyze the market with precision. Additionally, it connects to reliable data sources like Investing.com to retrieve the latest support and resistance levels and seamlessly integrates with the OpenAI API .

Key Features

Risk-Free Strategies

- Avoids dangerous strategies like Martingale, hedging, or arbitrage.
- Employs small stop-loss levels and fixed profit-taking points.

AI Integration

- Utilizes advanced algorithms in deep learning and neural networks.
- Connects to the OpenAI API for analyzing historical and current market data, predicting future market movements, and enhancing trading decision accuracy.

Support and Resistance Data

- Accesses trusted sources like Investing.com for the latest support and resistance levels.
- Integrates these levels with AI analyses for deeper insights, identifying optimal entry and exit points.

High Liquidity and Volatility Zones

- Identifies areas of expected high liquidity or increased volatility through integrated analysis, aiding informed trading decisions.

Loss Recovery Strategy

- Activates a recovery mode if stop-loss or predefined daily/weekly loss limits are reached.
- Compares capital, profits, and losses to evaluate market conditions.
- Deploys deep learning algorithms to develop loss recovery strategies, such as adjusting lot sizes or entry/exit levels, aiming to recover a portion of previous losses. Recovery algorithms only activate when the probability of success exceeds 85%.

Smart Profit Tracking

- Incorporates multi-layered profit tracking algorithms:
 1. Dynamically locks in half the position at the first milestone.
 2. Adjusts to the second milestone based on liquidity levels, disabling the first layer.
 3. Activates a final layer to trail price movements until the last feasible point.

Liquidity and Volatility Analysis

- Identifies high-liquidity and high-volatility zones to execute trades under optimal conditions.

Advanced Risk Management

- Employs trailing stop-loss and breakeven points to protect profits and minimize losses.

Trading Strategies

Support and Resistance Strategy

- Relies on classical support and resistance data, proven effective over time.
- Enhances this traditional strategy with AI algorithms to increase profitability, the cornerstone of successful trades.
- Utilizes AI to compensate for losses by identifying high-probability trade setups in support and resistance areas.



Compatibility and Operating Environment

Feature	Details
Symbol	US 30 Dow Jones
Timeframe	M30 + H1
Digits	2 Digits (1 digit in the next update)
Capital	Minimum \$100
Broker	Any broker
Account Type	Any, lower spread preferred
Leverage	From 1:20
VPS	Preferred, but not mandatory (MQL VPS)
RAM	1 GB for all 3 platforms The expert requires random access memory for storage due to training operations
Prop Firm	Supported

Customizable Settings

- **Lot Size:** Adjustable based on the preferred risk percentage.
- **AI Settings:** Option to enable or disable certain smart features as needed.
- **Loss Recovery Triggers:** Set criteria to activate loss recovery strategies based on daily and weekly loss thresholds.

Performance and Testing

- **Historical Testing:** Backtested on historical data to ensure optimal performance under various market conditions.
- **Positive Results:** Demonstrated exceptional performance in accurately identifying entry and exit points.

Usage Notes

- **Regular Updates:** Regularly updating the expert advisor is recommended to ensure compatibility with market changes.
- **Demo Account Testing:** Before using on a live account, it is advised to test on a demo account to adjust settings according to user preferences.

Why Did We Choose the Dow Jones US 30 Index?

The Dow Jones US 30 Index is one of the most prominent indices in the American and global stock markets. It offers numerous advantages that make it a key measure of the performance of the U.S. economy and financial markets. Among its notable features is high liquidity, which enhances its effectiveness as a benchmark index.

Key Advantages of the Dow Jones Index:

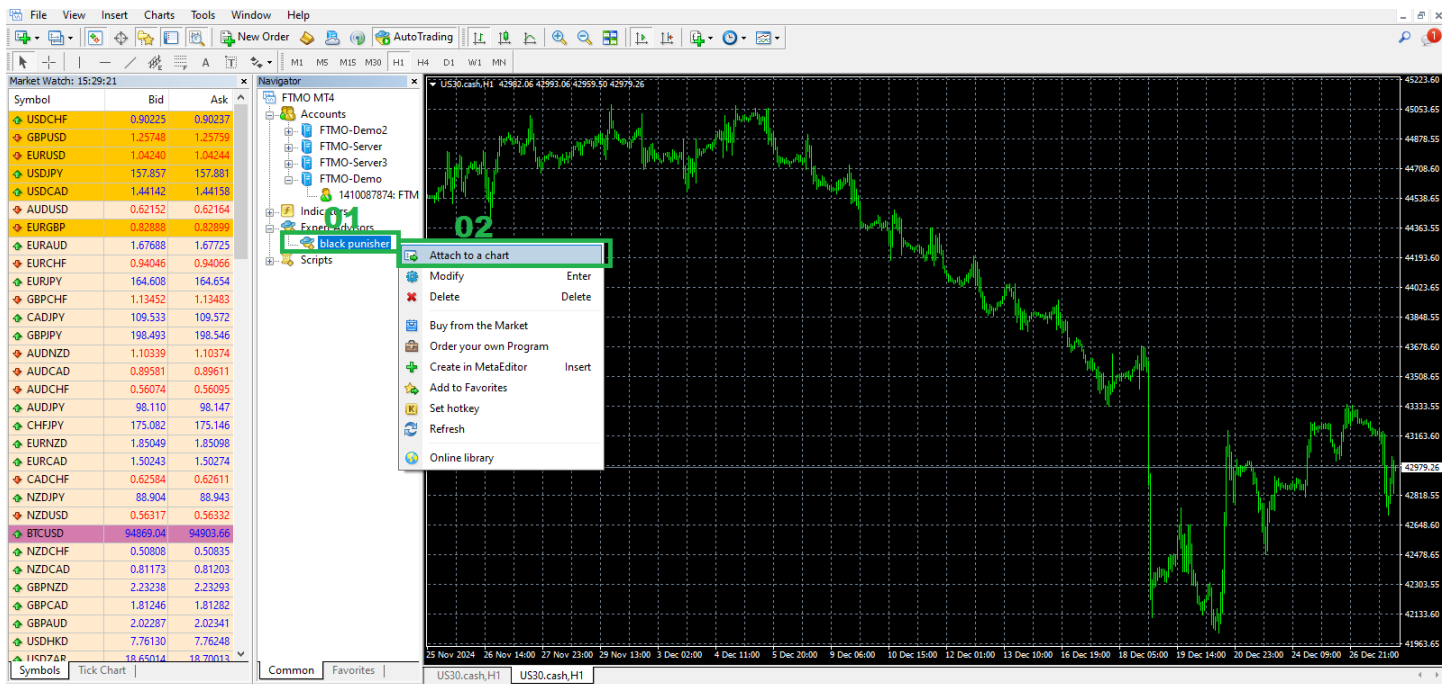
1. **Representation of Major U.S. Companies**
 - Composed of 30 major companies representing various sectors of the U.S. economy, including global names like **Apple, Microsoft, Coca-Cola, and Johnson & Johnson**.
 - Reflects the health and trends of these influential companies, which significantly impact the U.S. economy.
2. **Ease of Tracking and Understanding**
 - The index is easy to follow due to its limited number of companies compared to other indices like the S&P 500.
 - This simplifies analysis and comprehension for investors and the media.
3. **Long-Term Historical Index**
 - Established in 1896, making it one of the oldest and most reliable indices for tracking market movements.
 - Its long history provides trustworthy data for assessing major market trends.
4. **Focus on Leading Companies**
 - Reflects the performance of leading companies in U.S. economic sectors, such as technology, industry, and finance.
 - Offers a clear view of the overall direction of the U.S. economy.
5. **Effective Analytical Tool for Investors**
 - Widely used to evaluate the performance of the economy and markets.
 - Serves as a reliable metric to gauge market success or failure over specific periods.
6. **Relative Stability Compared to Other Indices**
 - The careful selection of companies enhances the index's stability, making it less prone to volatility than other indices.
 - Serves as a dependable indicator of market movements.
7. **High Liquidity**
 - The major companies listed ensure high liquidity for the stocks associated with the index, facilitating smooth market entry and exit without significant price impacts.
 - High liquidity also contributes to price stability and reduces execution costs.
8. **No Trading Commissions**
 - One of the key advantages is the absence of commissions, regardless of contract size or the number of trades.
 - This makes trading more financially efficient, enhancing profitability for investors.

Summary

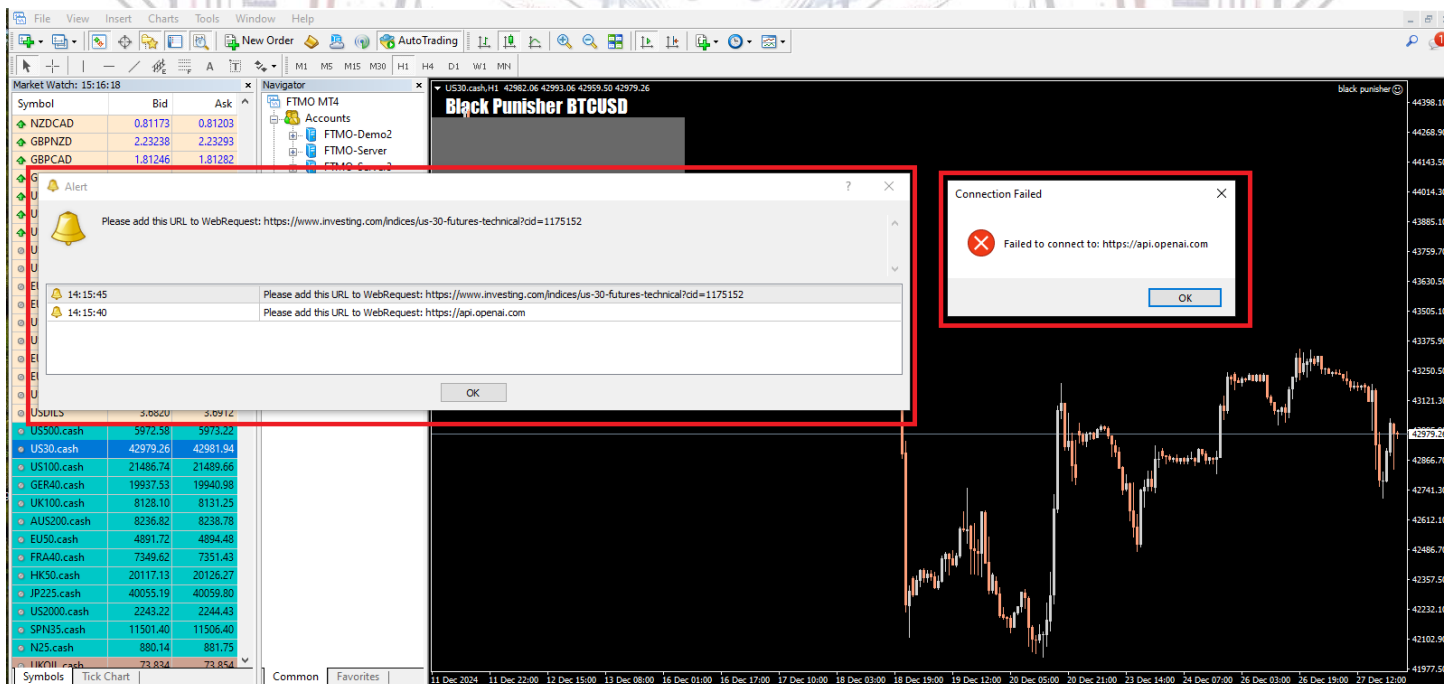
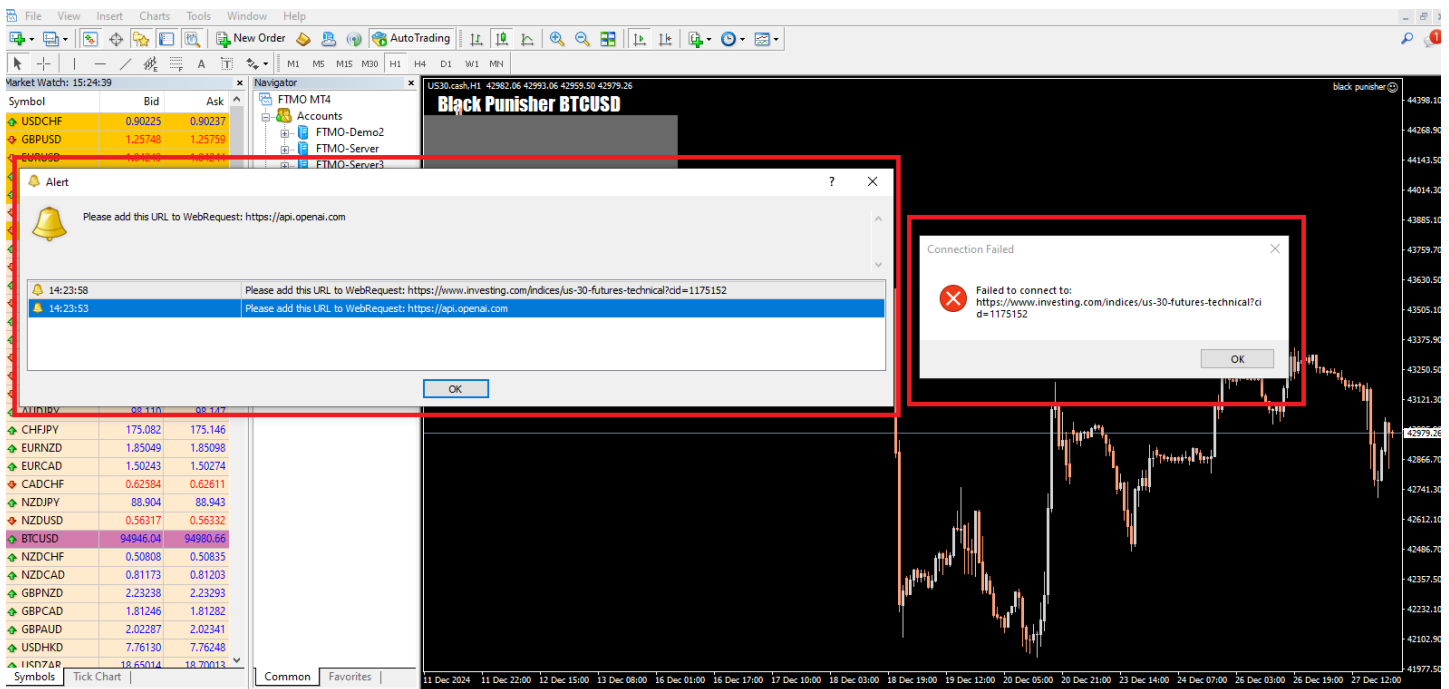
The Dow Jones Index provides investors and analysts with a powerful and straightforward tool to understand the overall performance of the U.S. economy. Its accurate representation of major companies, long history, ease of tracking, and high liquidity enhance its value as a key analytical benchmark for measuring market performance and future trends.

Installation Steps:

1. **Step 01:** Right-click with the mouse on the specified item in the image.
2. **Step 02:** Left-click with the mouse on the option that appears after right-clicking.

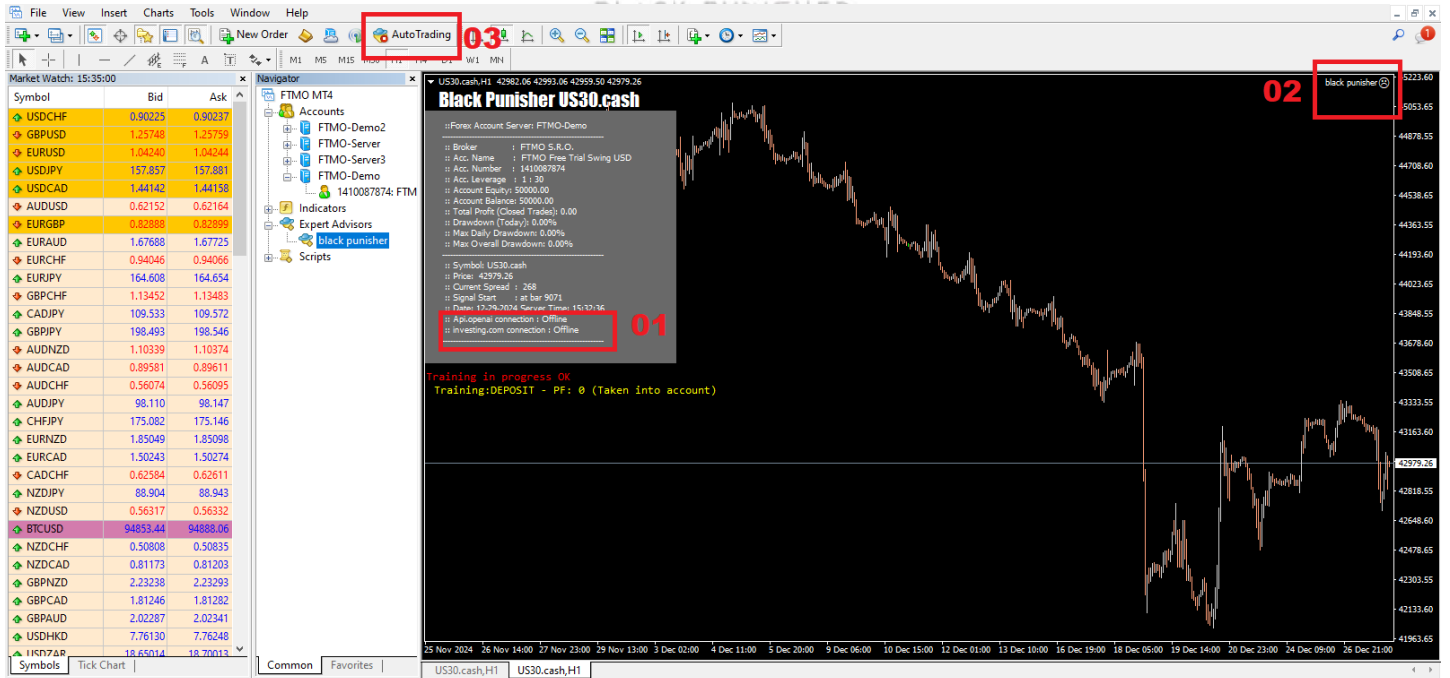


02: In the following two images, you will be presented with the following messages. Please scroll through them and click "OK."



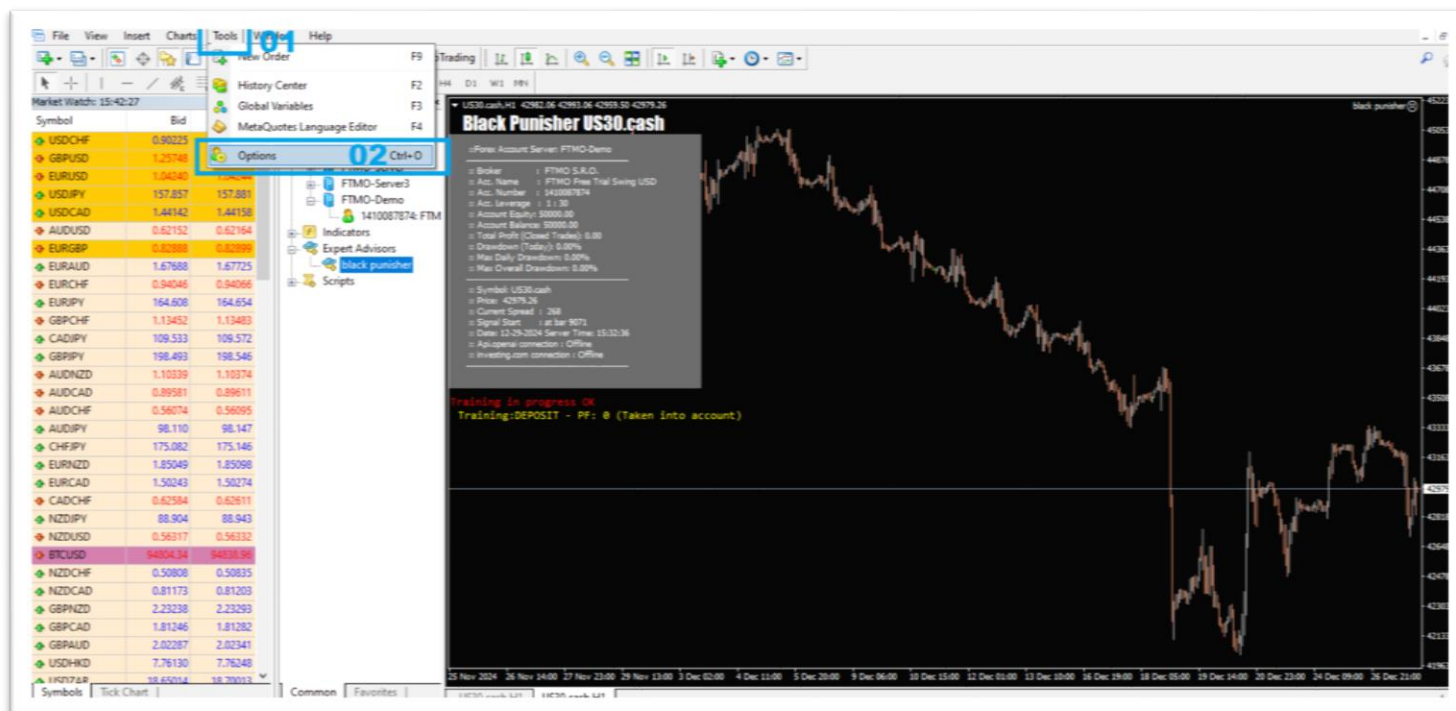
03:

- You will notice in Frame 01 that the expert is not connected.
- You will notice in Frame 02 that the face is not smiling.
- You will notice in Frame 03 that automated trading is not activated.

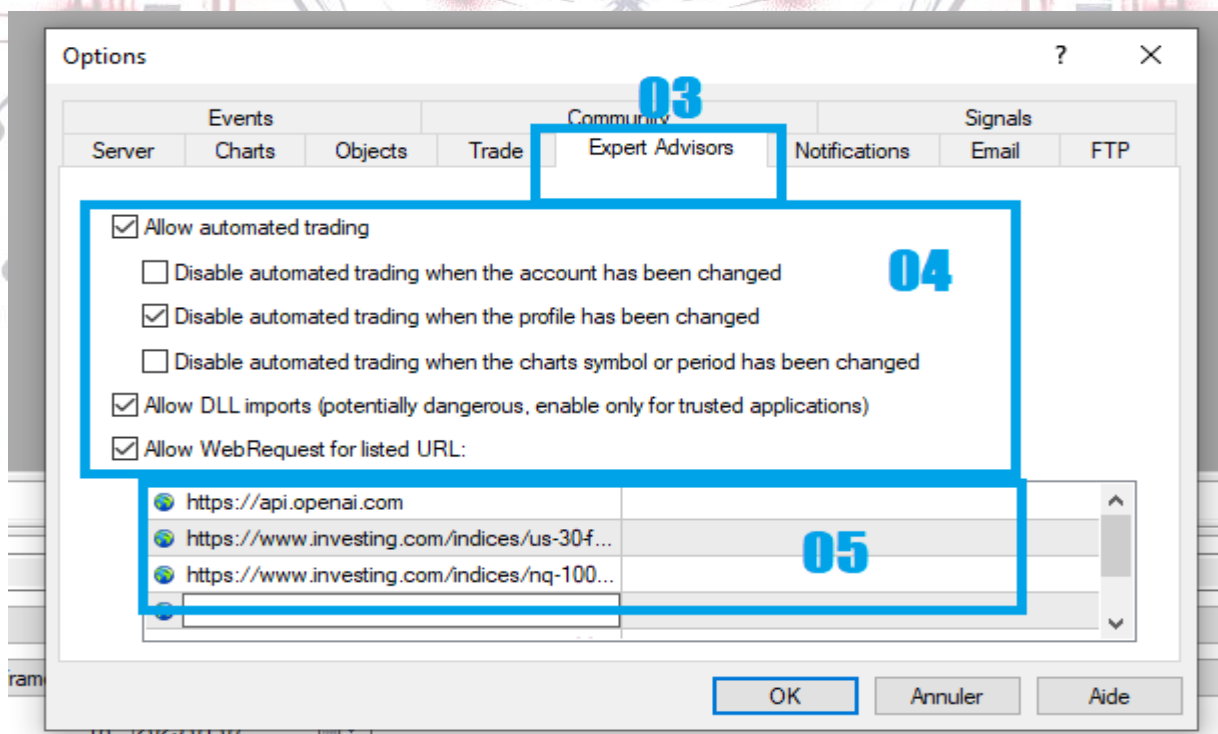


04:

We will resolve these issues in 5 simple steps, as shown in the following two images.



Adjust the settings as shown in the image.

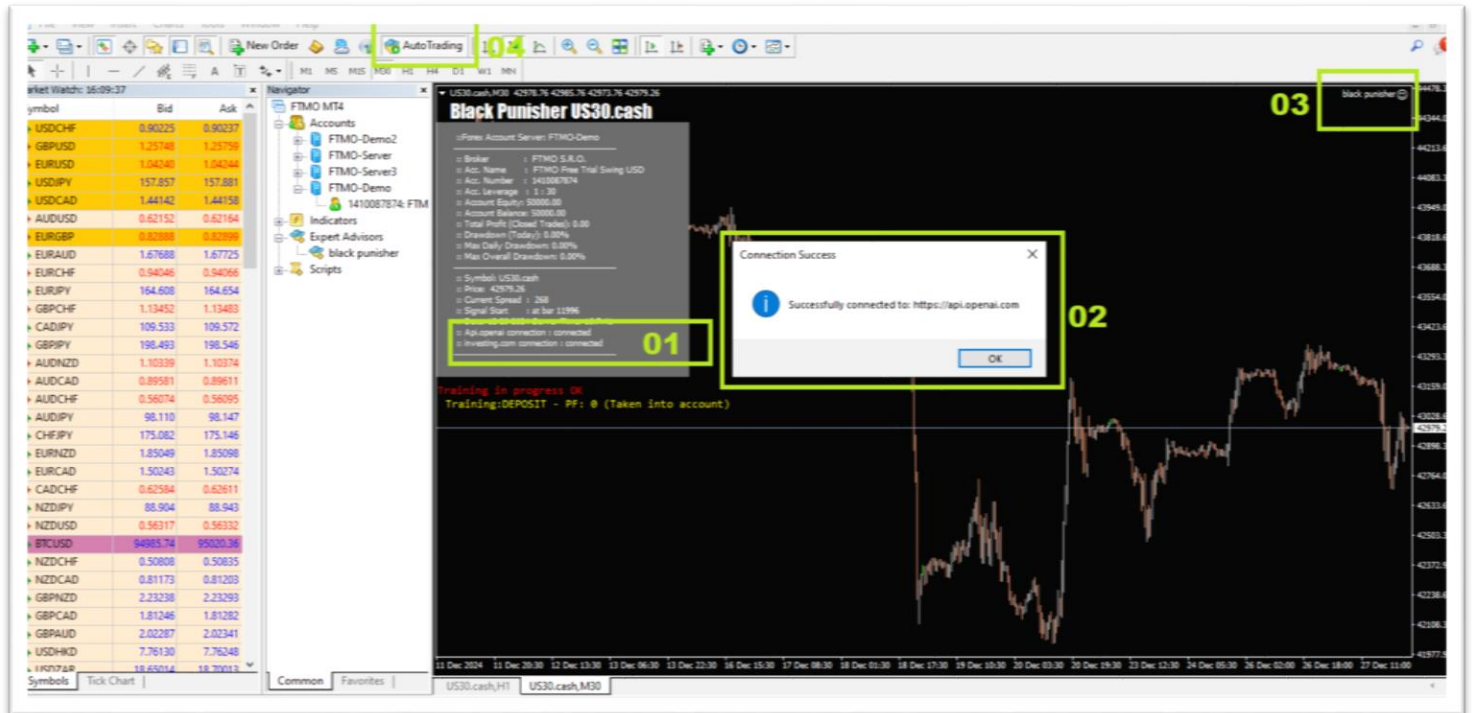


Add the following addresses in the blue frame number 5:

1. First address: <https://api.openai.com>
2. Second address: <https://www.investing.com/indices/us-30-futures-technical?cid=1175152>
3. Third address: <https://www.investing.com/indices/nq-100-technical>

05:

In the end, you will get the following:



In the end, you will get the following:

- **Frame 01:** Indicates that the connection is successful.
- **Frame 02:** Confirms the successful connection.
- **Frame 03:** Displays the smiling face.
- **Frame 04:** Shows that automated trading is enabled.

Now, the installation and settings have been successfully completed.

BLACK PUNISHER

Explanation of Settings with a Brief Description: Part One

Expert - black punisher

About Common Inputs

Variable	Value
par	===== Strategy1=====
Strategy1_Enabled	true
Otstup_point_buy	0
Otstup_point_sell	0
TP_buy 0 - Off	15000
SL_buy 0 - Off	5000
TP_sell 0 - Off	15000
SL_sell 0 - Off	5000
Strategy1	Smart AI Trailing Points
Smart Trailing Points	800.0
smartTrails	1500.0
TrailingStopSmart 0 - Off	400.0
TrailingStepSmart 0 - Off	0.0
TradeComment	Black Punisher
par2	===== Strategy2=====
Api_openai_Recovery	true
Multiplier	1.5
Otstup_point_buy	0
Otstup_point_sell	0
TP_buy 0 - Off	15000
SL_buy 0 - Off	5000
TP_sell 0 - Off	15000
SL_sell 0 - Off	5000
Strategy2	Smart AI Trailing Points
Smart Trailing Points	800.0
smartTrails	1500.0
TrailingStopSmart 0 - Off	400.0
TrailingStepSmart 0 - Off	0.0
TradeComment2	Black Punisher Recovery

Load Save

OK Annuler Reset

Strategy 1

- **Otstup_point_b**: Deviation in points when buying.
- **Otstup_point_s**: Deviation in points when selling.
- **TP_buy**: Profit target when buying in points. If the value is 0, the feature is disabled.
- **SL_buy**: Stop loss when buying in points. If the value is 0, the feature is disabled.
- **TP_sell**: Profit target when selling in points. If the value is 0, the feature is disabled.
- **SL_sell**: Stop loss when selling in points. If the value is 0, the feature is disabled.

Smart Trailing AI Points

- **Smart Trailing Points**: Breakeven points used for smart trailing.
- **smartTrails**: Smart trailing in points.
- **TrailingStop**: The smart stop level when trailing. If the value is 0, the feature is disabled.
- **TrailingStep**: The step used in smart stop. If the value is 0, the feature is disabled.
- **TradeComment**: "Black Punisher";: Trade comment for this strategy.

Strategy 2

- **Api_openai_Recovery**: true/false: Data recovery feature using the OpenAI API.
- **Multiplier**: Multiplier used in risk management or recovery.
- **Otstup_point_b2**: Deviation in points when buying for strategy two.
- **Otstup_point_s2**: Deviation in points when selling for strategy two.
- **TP_buy2**: Profit target when buying in points for strategy two. If the value is 0, the feature is disabled.
- **SL_buy2**: Stop loss when buying in points for strategy two. If the value is 0, the feature is disabled.
- **TP_sell2**: Profit target when selling in points for strategy two. If the value is 0, the feature is disabled.
- **SL_sell2**: Stop loss when selling in points for strategy two. If the value is 0, the feature is disabled.

Smart Trailing AI Points

- **Smart Trailing Points2**: Breakeven points used for smart trailing in strategy two.
 - **smartTrails2**: Smart trailing in points for strategy two.
 - **TrailingStop2**: The smart stop level when trailing in strategy two. If the value is 0, the feature is disabled.
 - **TrailingStep2**: The step used in smart stop for strategy two. If the value is 0, the feature is disabled.
 - **TradeComment2**: "Black Punisher Recovery";: Trade comment for this strategy.
-

Explanation of Settings with a Brief Description: Part Two

Expert - black punisher

About Common Inputs

Variable	Value
Percentage_Management	===== TAKE PROFIT + STOP LOSS IN % - if 0 = disable =====
TAKE PROFIT % if 0 = disable	0.0
STOP LOSS % if 0 = disable	0.0
expert stops and deletes at target IN %	false
control_old_delete_pending	=====Timer to delete old pending trades=====
Days To Delete OLD TRADE	2
mm	===== Money Managment =====
Lots	0.0
USE_MM	true
risk	1.0
PROP_FIRM	===== PROP_FIRM Managment =====
PROP_FIRM_Description	The expert stops and deletes at target
TotalProfit_USD if 0 = disable	0.0
TotalLoss_USD if 0 = disable	0.0
MaxDrawdownLimit if 0 = disabl	0.0
PROP_FIRM_Description2	The expert will continue trading the next day
DAILY_Profit_Target_USD if 0 = disable	0.0
DAILY_Loss_Target_USD if 0 = disable	0.0
INDICATOR	===== INDICATOR=====
More stable	25
Deep filtering	25
cl	===== Closing and deleting your order Friday =====
Friday	true
Time_End	18:00
Start and end by the hour	false
Start hour	1
end hour	23
other	===== Other settings =====
slippage	150
Max_SPREAD	150
m	===== Magic Number =====
Magic Number	66894

Load Save

OK Annuler Reset

Percentage Management

- **Percentage_Management:** Percentage-based target management.
- **TAKE PROFIT %:** The target profit as a percentage. If the value is 0, the feature is disabled.
- **STOP LOSS %:** The stop loss as a percentage. If the value is 0, the feature is disabled.
- **stops_and_deletes_at_target_IN_Percentage:** TRUE/FALSE: Stops the expert and deletes orders when the target percentage is reached.

Control Old Pending Trades

- **control_old_delete_pending:** Time to delete old pending orders.
- **Days To Delete OLD TRADE:** Number of days after which old orders will be deleted.

Money Management

- **mm:** Money management.
- **Lots:** Lot size used.
- **USE_MM:** TRUE/FALSE: Enable smart money management.
- **Risk:** Risk percentage.

PROP FIRM Management

- **PROP_FIRM:** Managed prop firm accounts.
 - **PROP_FIRM_Description:** The expert will stop completely, delete orders, and close open trades once the target is reached.
 - **Total Profit_Target:** Total profit target in USD. If the value is 0, the feature is disabled.
 - **Total Loss_Target:** Total loss target in USD. If the value is 0, the feature is disabled.
 - **MaxDrawdownLimit:** Maximum drawdown limit. If the value is 0, the feature is disabled.
-
- **PROP_FIRM_Description2:** The expert will continue trading on the next day.
 - **DAILY_Profit_Target_USD:** Daily profit target in USD. If the value is 0, the feature is disabled.
 - **DAILY_Loss_Target_USD:** Daily loss target in USD. If the value is 0, the feature is disabled.

Indicator Settings

- **INDICATOR:** Indicator settings.
 - **More stable:** Depth for more stable filtering.
 - **Deep filtering:** Deviation for deep filtering.
-

Closing and Deleting Orders on Friday

- **cl:** Settings for closing orders on Friday.
- **Friday:** Enable order closure on Friday.
- **Time_End:** The specified closing time.
- **Start and end by the hour:** Enable closing based on the hour.
- **Start hour:** The start hour.
- **end hour:** The end hour.

Other Settings

- **other:** Other settings.
- **slippage:** The allowed slippage in points.
- **Max_SPREAD:** Maximum spread allowed.

Magic Number

- **MAGIC:** The magic number for the expert.

Introduction to Backtest Analysis

In analyzing trading performance based on the provided data, it is important to emphasize that backtest results do not necessarily reflect future outcomes. Although the data obtained from this backtest indicates strong performance with a high success rate and good profits, it is essential to consider that trading in financial markets is inherently volatile and subject to change.

Due to this nature, future results may vary significantly from those achieved in the backtest. Market fluctuations and different economic conditions can have a significant impact on the performance of strategies in the future, making the future results either higher or lower than those predicted based on previous data.

Therefore, it is crucial to approach backtest results with caution and take these variables into account when making investment or trading decisions based on this data.

YOU CAN SEE FROM THIS LINK = <https://www.myfxbook.com/strategies/black-punisher-medium-risk-backtest/365889>



Trading Performance Analysis Based on Provided Data

2024+2023

Metric	Value	Analysis
Total Trades	390	A large number of trades reflecting high trading activity.
Pips	757,882.0	A significant number of pips indicates good utilization of market movements.
Average Win (Pips / \$)	2,855.93 pips / \$1,292.44	A solid average win per trade indicates effective risk management.
Average Loss (Pips / \$)	-3,500.0 pips / - \$1,771.79	Losses are controlled but slightly higher than the average win per trade.
Total Lots	18,143.45	A high trading volume reflects strong trading capacity and capital management.
Commissions	0	No commissions enhance net profitability.
Winning Long Trades	(171/203) 84%	High success rate in long positions.
Winning Short Trades	(163/187) 87%	Slightly higher success rate in short positions.
Best Trade (\$)	(Jun 12) \$10,502.58	The highest profit trade reflects well-utilized market opportunities.
Worst Trade (\$)	(Jul 23) -\$3,500.0	Acceptable loss compared to the overall profits.
Best Trade (Pips)	(Jun 12) 13,931.0 pips	Excellent ability to achieve a significant number of pips in one trade.
Worst Trade (Pips)	(Jan 26) -3,500.0 pips	Lowest loss in pips relative to the profits achieved.
Average Trade Length	11 minutes	Short duration reflects a fast-paced trading strategy.
Profit Factor	4.35	Excellent performance, earning \$4.35 for every \$1 lost.
Standard Deviation (\$)	\$1,951.28	Reflects moderate variability in results.
Sharpe Ratio	0.65	Indicates good performance with reasonable returns relative to risks.
Expectancy	1,943.3 pips / \$852.45	Each trade generates a positive average profit, a strong indicator of sustainability.
Z-Score (Probability)	-1.95 (-97.65%)	Suggests low consistency in results, potentially reflecting some randomness.
AHPR (Arithmetic Daily Return)	0.92%	Reasonable daily growth rate, reflecting steady performance.
GHPR (Geometric Daily Return)	0.91%	Close to the arithmetic return, indicating stable performance.

Provided Data on Loss Size, Probability, and Consecutive Losing Trades

The provided data relates to the size of the loss, the probability of occurrence, and the number of consecutive losing trades that may occur at different loss percentages. Here are the details:

Loss Size (%)	Probability of Loss	Consecutive Losing Trades
100%	Less than 0.01%	193
90%	Less than 0.01%	174
80%	Less than 0.01%	155
70%	Less than 0.01%	135
60%	Less than 0.01%	116
50%	Less than 0.01%	97
40%	Less than 0.01%	77
30%	Less than 0.01%	58
20%	Less than 0.01%	39
10%	Less than 0.01%	19

Explanation:

1. Probability of Loss (<0.01%):

- The probability of experiencing a loss at any of the loss percentages (from 100% to 10%) is extremely low and is less than 0.01%. This means the system is carefully designed to avoid significant losses.

2. Number of Consecutive Losing Trades:

- The table shows the number of consecutive losing trades that could occur at each loss level.
- For example:
 - At 100% loss size, there could be 193 consecutive losing trades.
 - At 50% loss size, there could be 97 consecutive losing trades.
 - At 10% loss size, the number of consecutive losing trades drops to just 19.

3. Practical Interpretation:

- **Risk Reduction:** The data reflects a trading system with a high level of safety and risk control.
- **Capital Management:** It emphasizes the importance of minimizing potential long-term losses. The system shows great stability and the ability to handle a few losing trades without affecting overall performance.

4. Recommendations:

- Maintain current strategies that minimize the probability of loss.
- Ensure the use of capital management techniques to maintain consistent performance, even in the case of consecutive losing trades.

PROP_FIRM Management

1. PROP_FIRM (Managing Funded Accounts):

- This variable is used to manage funded accounts that follow specific conditions set by proprietary trading firms like FTMO or Fundnex. The advisor aims to preserve capital and achieve the set profit and loss targets.

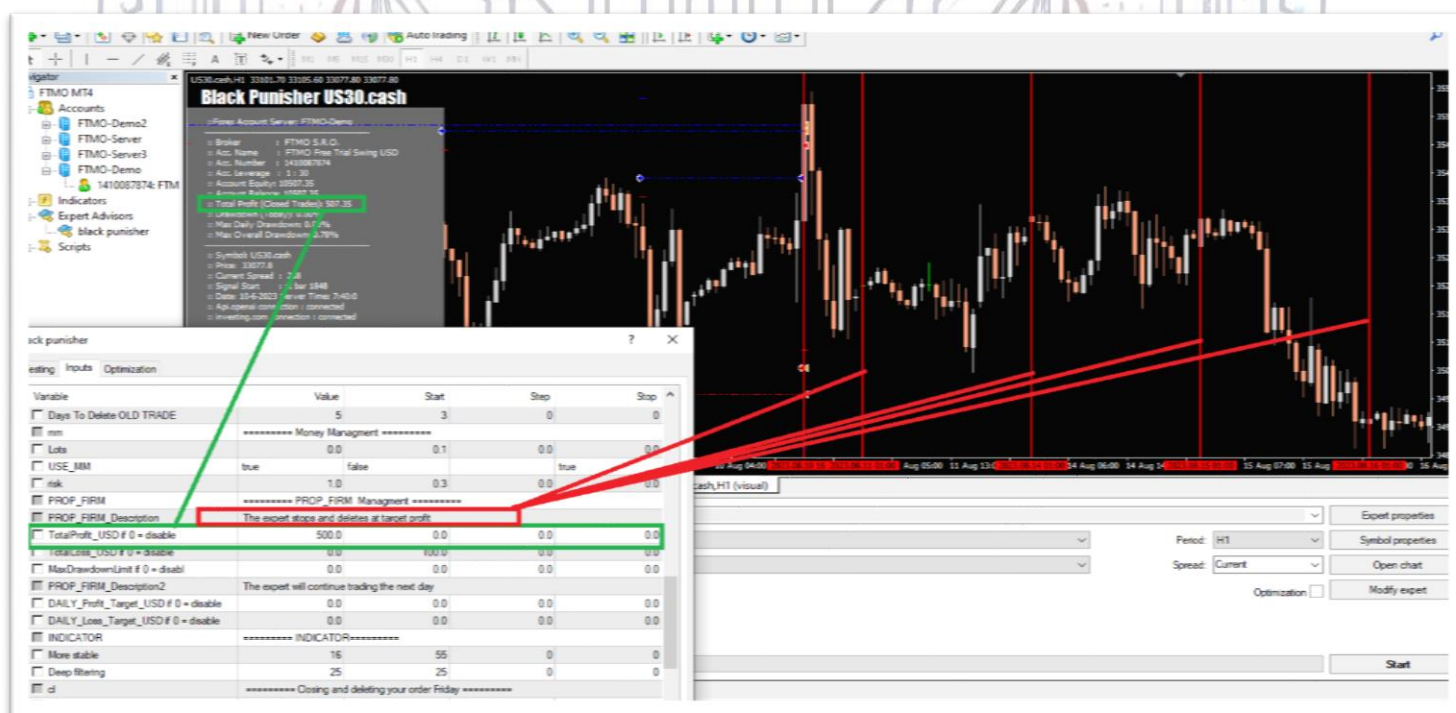
2. PROP_FIRM_Description (Description of Funded Account Management):

- Stop Trading Upon Reaching the Target:** When the specified target, whether profit or loss, is reached, the advisor stops trading completely. Additionally, it removes any pending or open orders and closes any existing positions. This ensures the account stays within the defined limits according to the trading plan.

3. Total Profit_Target (Total Profit Target):

- Value in USD:** This sets the total profit that must be achieved before stopping trading. If the value is 0, this feature is disabled.
- When the target is reached, the advisor closes all trades and halts trading until any future changes are made.

Example



4. Total Loss_Target (Total Loss Target):

- Value in USD:** This sets the maximum loss that can be tolerated. Once this loss is reached, trading is completely stopped.
- If the value is 0, the feature is disabled, meaning there is no cap on total loss.

5. MaxDrawdownLimit (Maximum Drawdown Limit):

- Percentage:** This sets the maximum allowable drawdown for the account's value.
- If the value is 0, it means the drawdown is unlimited. If the value is greater than 0, the advisor stops trading once the account exceeds the defined drawdown limit.

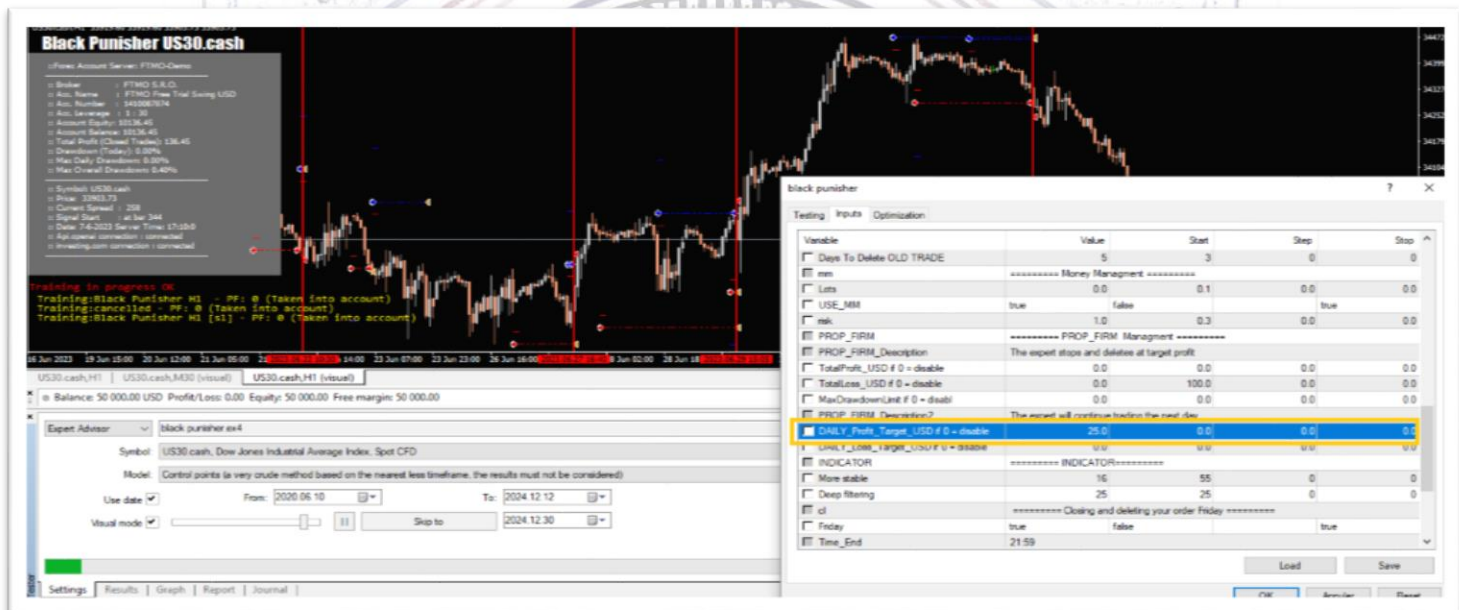
6. PROP_FIRM_Description2 (Description of Continued Trading):

- **Trading on the Next Day:** After reaching the specified targets (either profit or loss), the advisor continues trading the next day based on the predefined conditions. The variables can be customized to define how trading resumes.

7. DAILY_Profit_Target_USD (Daily Profit Target in USD):

- **Value in USD:** This sets the daily profit target. Once this target is met, trading for the day is stopped.
- If the value is 0, the feature is disabled, and there will be no daily profit target.

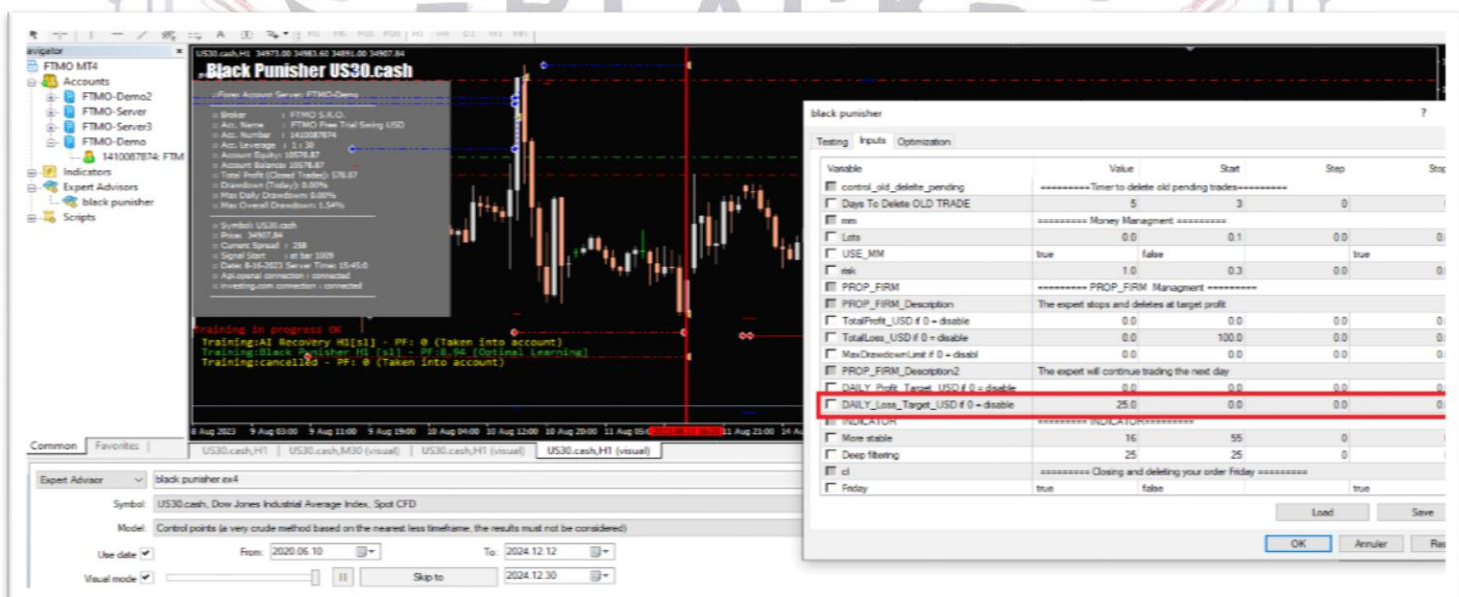
Example



8. DAILY_Loss_Target_USD (Daily Loss Target in USD):

- **Value in USD:** This sets the maximum daily loss. Once this loss limit is reached, trading for the day is stopped.
- If the value is 0, the feature is disabled, and trading will only stop if the total loss or drawdown limit is reached.

Example



Practical Explanation

These parameters help manage trades based on both daily and overall profit and loss goals, minimizing the risks associated with losses. By defining these limits, the advisor ensures the funded account stays within the safe boundaries set by the proprietary trading firm.

- **Stop Upon Reaching the Targets:** This ensures that the trader stops when the defined profit or loss target is reached, enhancing the stability and protection of the account.
- **Continued Trading the Next Day:** This feature allows the system to automatically resume trading the following day based on continuous analysis, helping to capitalize on trading opportunities without manual intervention.

The Risks of Trading and the Importance of Risk Management

Trading in financial markets carries significant risks, as sudden price fluctuations can lead to substantial losses that may exceed expectations. Without strict adherence to risk management principles, a trader could face the complete loss of their deposit. Determining the appropriate risk size per trade, using stop-loss orders, and diversifying capital are essential practices to mitigate these risks. Without these protective measures, poorly managed trades can be a primary cause of diminishing or entirely losing capital. It is crucial for traders to implement robust protection strategies to ensure that losses remain within reasonable limits, helping preserve capital in the long term.



contact me for help via telegram