

# FX GOLD EA

## A LITTLE ABOUT DEVELOPMENT

This robot surpasses most of the best EAs in terms of trading security several times. You can trade both aggressively and maximally conservatively according to the trend, due to powerful trend filters.

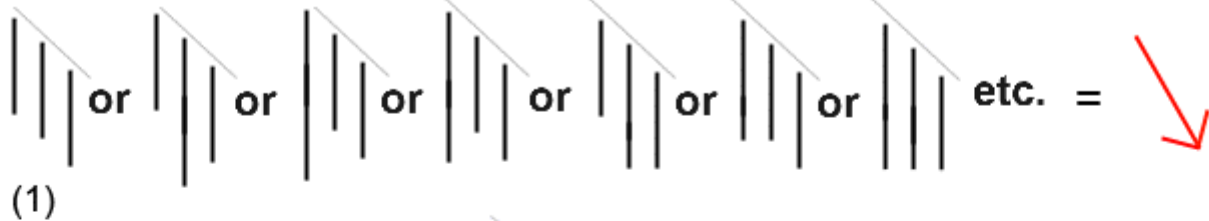
The main logic of trading is consolidation of price channels, as this is the most stable system of trading on gold.

Trading is conducted both on zone breakouts and on rebounds.

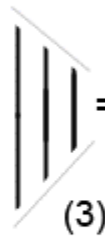
The best filters are used, in which the trend calculation is set by bars - when the closing price of the previous bar is higher or lower than the one before last... the trend is determined by the pattern of the last three bars. All this makes FX GOLD EA a very powerful tool for trading gold.

The advisor uses two different trading systems for purchases and sales. Accordingly, you will use two different set files on one currency pair. Read about this below in the "advisor installation" section

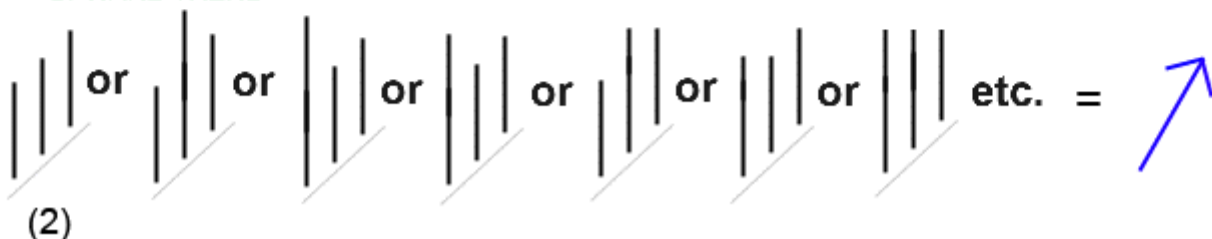
DOWNWARD TREND



CONTRADICTION = IGNORED



UPWARD TREND



## ADVISOR PARAMETERS

**Risk, STEP BALANCE** - automatic calculation of risk per balance step. For example: if we set the value 100 in the "Risk, Step balance" line, and set the value 0.01 in the "LOT" line, this will mean that for every \$100 the advisor will use 0.01 lot.

Another example: if we set the value 1000 in the "Risk, Step balance" line, and set the value 0.02 in the "LOT" line, this will mean that for every \$1000 the advisor will use a lot of 0.02.

**LOT** - lot volume. If you do not want to use automatic risk, then set the value 0 in the "Risk, Step balance" line, and specify the desired lot volume in the "LOT" line. With this setting, the advisor will always work with a fixed lot, regardless of your deposit.

**Max DD** - the maximum allowable drawdown on the deposit, which is calculated as a percentage of the total deposit, upon reaching which all transactions are closed.

Example: set the value "Max DD 20", this will mean that when the account drawdown reaches 20%, all open transactions will be forcibly closed.

**GMT** - your broker's time shift.

If your broker, for example, uses the GMT+2 shift in winter, and GMT+3 in summer, then the advisor settings should be set:

GMT = 2 (winter time shift)

DST = true (this is an automatic switch to summer time)

This means that the advisor will use GMT +2 in winter, and in summer it will automatically add one hour and use the GMT +3 shift.

This setting is suitable for most brokers, such as: IC MARKETS, FP MARKETS, ALPARI and others.

**DST** - automatic time shift by one hour.

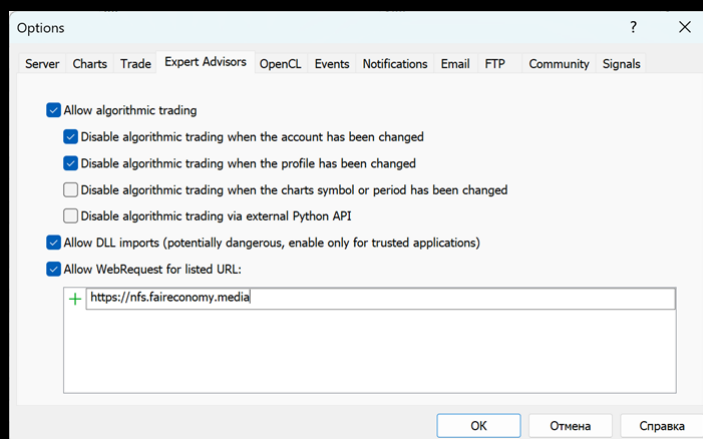
If your broker does not use the transition to winter/summer time, and it has the same GMT all year round, for example +0, then the settings will be as follows:

GMT = 0

DST = false (we do not need automatic transition to summer time, because we have the same GMT all year round)

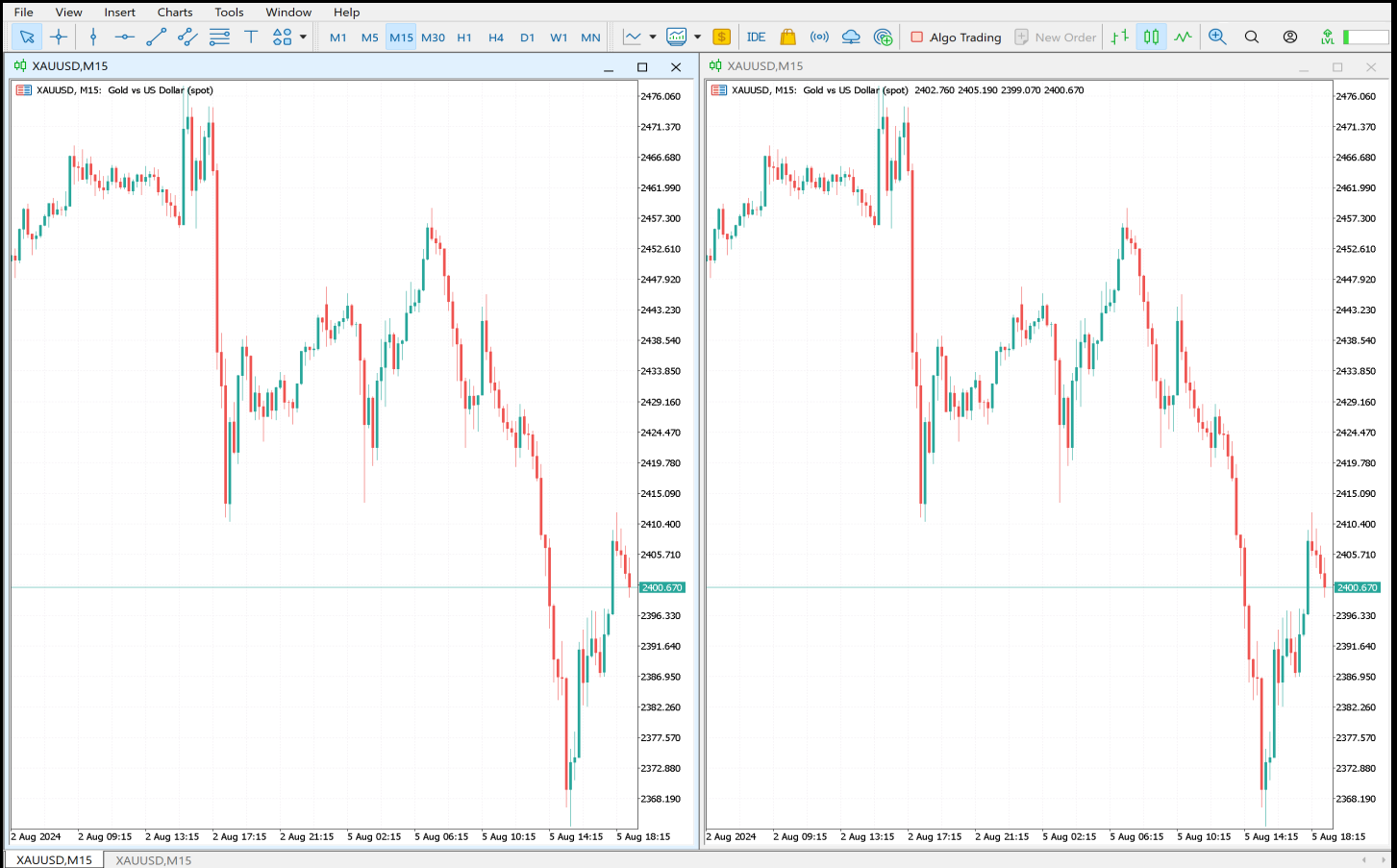
If you have any difficulties determining the GMT of your broker, then please contact me, and I will help you with the settings.

**NEWS FILTER** - to activate the news filter, you need to go to the tab in the terminal - Tools / Options / Expert Advisor, check the box and enter the URL of the news site <https://nfs.faireconomy.media>

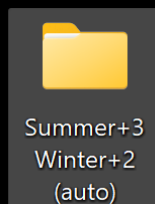


## INSTALLING THE ADVISOR

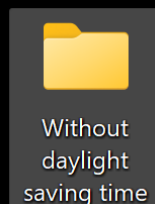
### 1. Open two XAUUSD charts, M15 timeframe



2. Determine your broker's GMT and download the necessary set files from the ad page. If your broker uses GMT+3 in summer and GMT+2 in winter, you need to download the set files called **"Summer+3 Winter+2 (auto)"**. These set files use automatic transition to summer time. Such settings are used by most brokers, such as: IC MARKETS / FP MARKETS / ROBOFOREX and others.



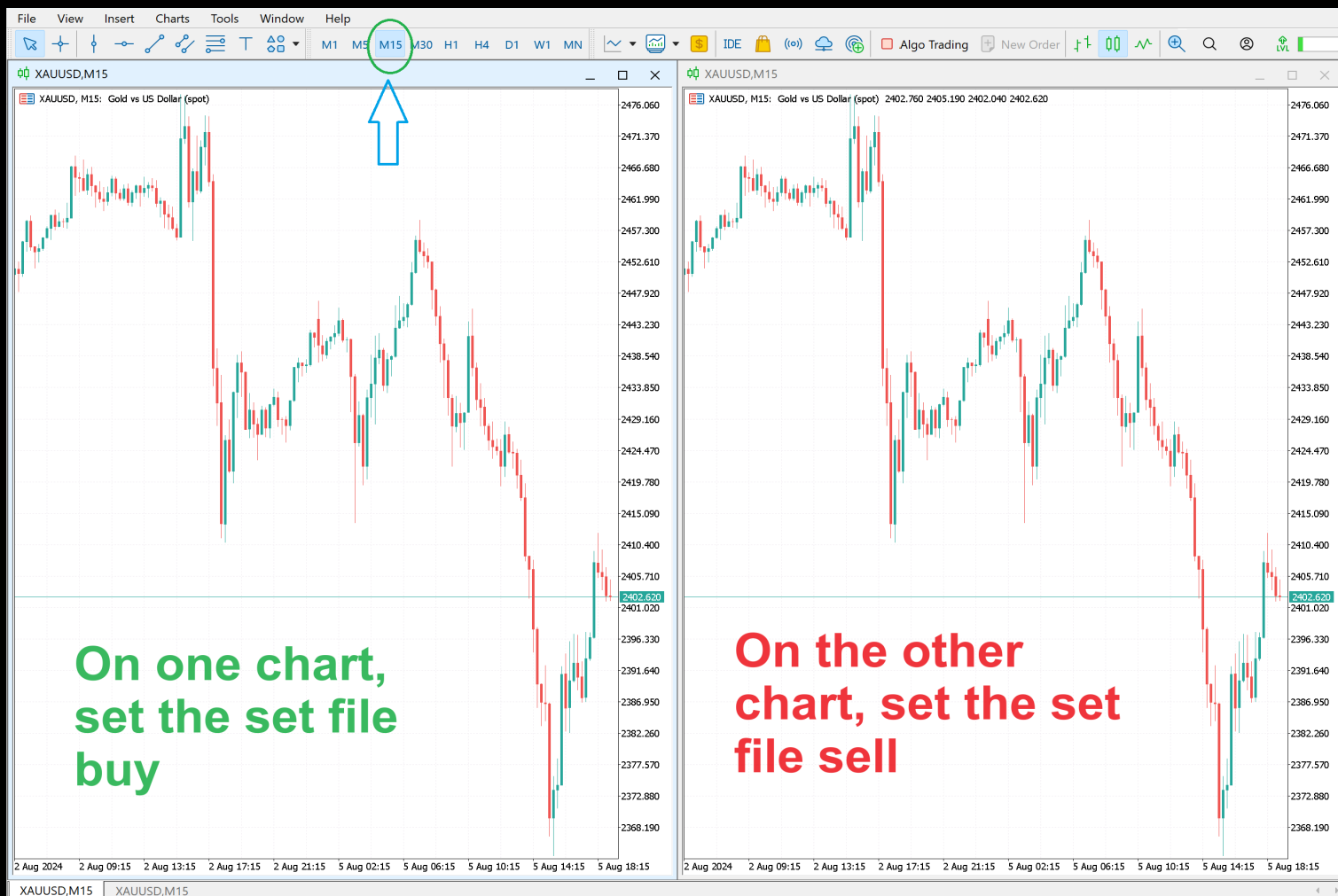
If your broker does not use daylight saving time and has the same GMT all year round, for example +0, then download and install the set files called **"Without daylight saving time"** - GMT+0.



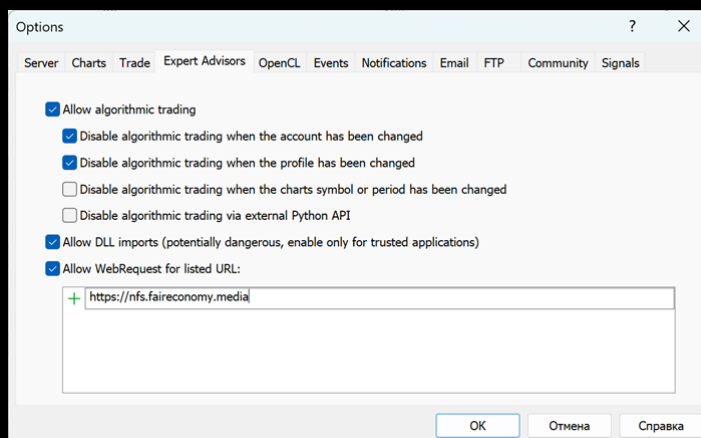
You can download the set files here by clicking on the folder, or you can download them on the main page of the announcement.

If you have any difficulties determining your broker's GMT, do not hesitate to contact me for help via MQL messages. I will definitely help you. GMT shift is one of the most important robot settings. There should be no errors in determining the shift!

3. Determine your risk and select the appropriate set file. Set the set file (sell) on one chart, and set the set file (buy) on the second chart.



4. Next, in the terminal, you need to go to the tab - Tools - Options - Expert Advisor and add the URL <https://nfs.faireconomy.media> to filter news. You also need to check all the boxes as in the photo



This completes the installation of the robot.

## DEPOSIT RISKS

**Light risk** - automatically calculates a lot of 0.01 for every 300 units of the base currency **Medium risk** - automatically calculates a lot of 0.01 for every 200 units of the base currency **High risk** - automatically calculates a lot of 0.01 for every 100 units of the base currency

If the stop loss is triggered, how much will we lose?

**Light risk buy** - 4.5% from one transaction

**Light risk sell** - 5.5% from one transaction

**Medium risk buy** - 6.75% from one transaction

**Medium risk sell** - 8.25% from one transaction

**High risk buy** - 13.5% from one transaction

**High risk sell** - 16.5% from one transaction

The advisor works with single transactions and does not use any dangerous trading methods. Therefore, these are quite adequate risks for him.

If you want to always use the same lot, regardless of your deposit, then in the line "Risk, Step balance" set the value to 0, and in the lot field specify the lot volume you need.

We are waiting for you. Good and peace to all, and good profits!



**FX GOLD EA**

**professional system for gold trading**