

Perpetual Profits Software



IMPORTANT : As an added bonus for downloading this software, you also received additional free training videos.

To access your bonuses, go to:

<http://www.sublimeforexchampions.com/>

Get More Additional Bonuses at <http://www.sublimeforexchampions.com>

Introduction

The Perpetual Profit Software was developed by us (Dean and Thomas) in our trading lab and this was a very powerful software package indicator systems. It's a dashboard type of tool and displays information about 12 different popular indicators and their directions in 8 different timeframes. Here is how the this software looks like



The screenshot shows a dashboard titled "Perpetual Profits Software" with a table of indicator directions. The table has 15 columns: Timeframe, MA1, MA2, MA3, MACDRSI, CCI, ADX, STO, MOM, RVI, FOR, BULL, BEAR, and ATR. The rows represent different timeframes: 1M, 5M, 15M, 30M, 1H, 4H, D1, and W1. Each cell contains a direction (UP, DN, CS, OS, OB) or a numerical value (ATR).

	MA1	MA2	MA3	MACDRSI	CCI	ADX	STO	MOM	RVI	FOR	BULL	BEAR	ATR
1M	DN	DN	DN	DN	DN	DN	UP	DN	UP	DN	DN	DN	0.00051
5M	DN	DN	DN	DN	DN	CS	OS	UP	DN	UP	DN	DN	0.00101
15M	DN	DN	UP	UP	DN	DN	UP	DN	DN	DN	DN	DN	0.00130
30M	DN	UP	UP	DN	DN	DN	CS	UP	DN	UP	DN	UP	0.00139
1H	DN	UP	UP	DN	UP	OS	UP	UP	DN	UP	DN	UP	0.00228
4H	UP	UP	UP	DN	UP	UP	DN	UP	DN	UP	UP	UP	0.00514
D1	UP	UP	UP	UP	UP	OB	UP	OB	UP	UP	UP	UP	0.01333
W1	UP	UP	DN	UP	UP	OB	CS	OB	UP	UP	UP	UP	0.03730

Get More Additional Bonuses at <http://www.sublimeforexchampions.com>

Supported Indicators

The software basically displays information of 12 popular indicators and its direct or levels in 8 different timeframes. The 12 indicators supported are

1. MA1, MA2, MA3 (Moving Average)
2. MACD
3. RSI (Relative Strength Index)
4. CCI (Commodity Channel Index)
5. ADX (Average directional movement index)
6. STO (Stochastic)
7. MOM (Momentum)
8. RVI (Relative Vigor Index)
9. FOR (Force Indicator)
10. BULL (Bull Indicator)
11. BEAR (Bear Indicator)
12. ATR (Average True Range)

The software will display information about the current direction or current level of each indicator except the ATR. You will see the following codes displayed on the screen

DN: DOWN

UP: UP

Get More Additional Bonuses at <http://www.sublimeforexchampions.com>

OS: Oversold

OB: Overbought

CS: Crossing

SW: Sideway

The software display information about the current direction or level of each indicator in 8 timeframes

1M: 1 minute

5M: 5 minutes

30M: 30 minutes

1H: 1 Hour

4H: 4 Hours

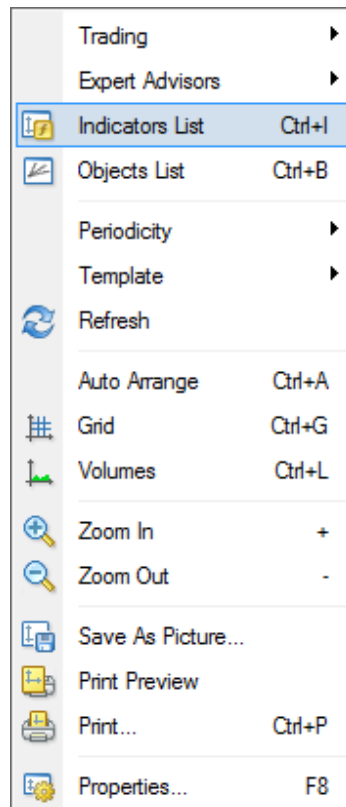
D1: Daily

W1: Weekly

Software settings

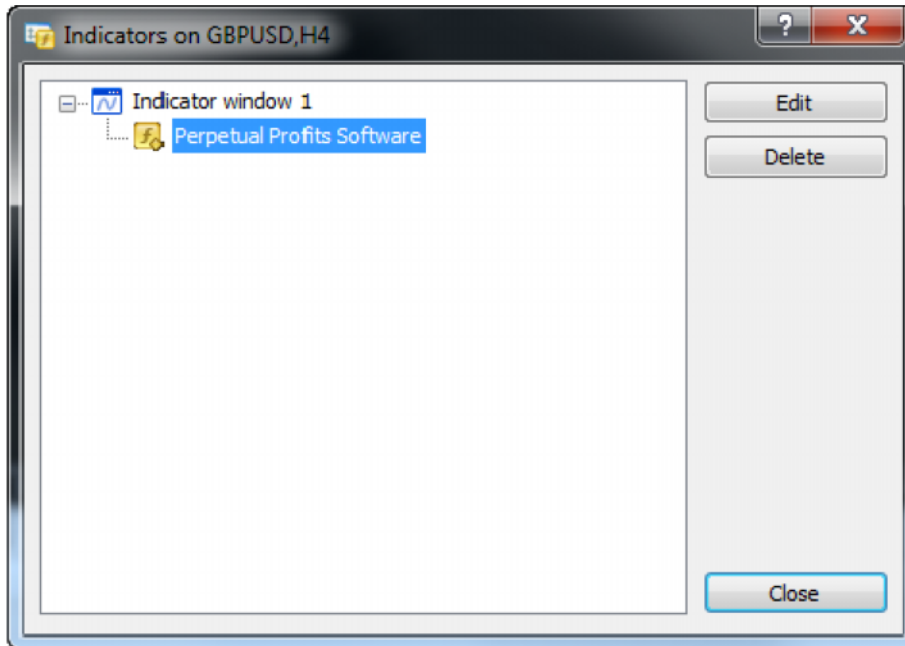
Our software allows you customizing setting of each indicator. Right Click on the chart window and choose Indicator List

Get More Additional Bonuses at <http://www.sublimeforexchampions.com>

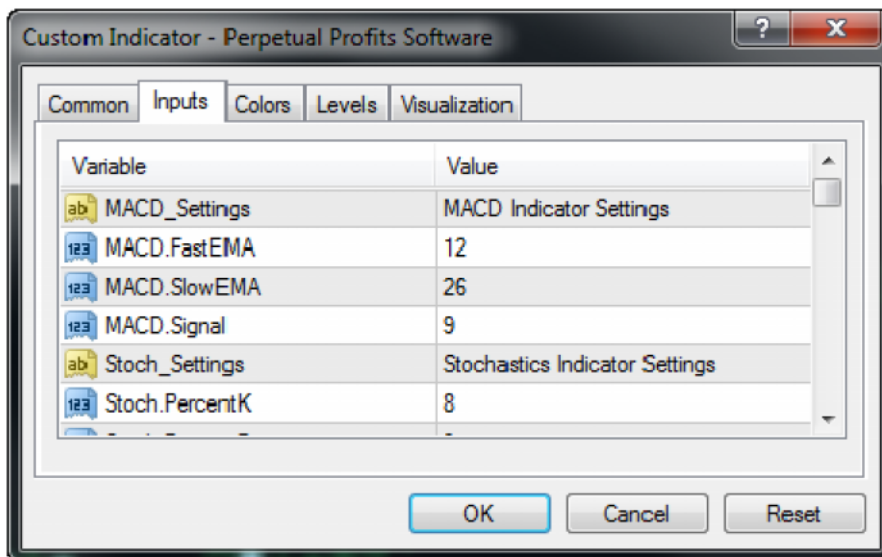


The choose the Perpetual Profits Software and click Edit

Get More Additional Bonuses at <http://www.sublimeforexchampions.com>



Now you can edit the settings of each indicator to suit your trading needs.



Get More Additional Bonuses at <http://www.sublimeforexchampions.com>

MACD settings

MACD.FastEMA = 12 : FastEMA period

MACD.SlowEMA = 26 : SlowEMA period

MACD.Signal = 9: Signal Period

Stochastic Indicator Settings

Stoch.PercentK = 8 : %K period

Stoch.PercentD = 3: %D period

Stoch.Slow = 3 : Slow Period

Stoch.OB = 80 : Stochastic Overbought Level

Stoch.OS = 20 : Stochastic Oversold Level

RSI Indicator Settings

RSI.Period = 14 : RSI Period

RSI.OB = 80 : RSI Overbought Level

RSI.OS = 20: RSI Oversold Level

CCI Indicator Settings

CCI.Period = 14: CCI Period

Get More Additional Bonuses at <http://www.sublimeforexchampions.com>

CCI.OB = 100: CCI Overbought Level

CCI.OS = -100: CCI Oversold Level

ADX Indicator Settings

ADX.Period = 14: ADX Period

Moving Averages 1 Settings

MA1.Period = 15: Moving Averages Indicator 1 Period

MA1.Mode = 1 : Moving Average Type (0: SMA, 1:EMA, 2:SMMA, 3:LWMA)

Moving Averages 2 Settings

MA2.Period = 50: Moving Averages Indicator 2 Period

MA2.Mode = 1 : Moving Average Type (0: SMA, 1:EMA, 2:SMMA, 3:LWMA)

Moving Averages 3 Settings

MA3.Period = 100: Moving Averages Indicator 3 Period

MA3.Mode = 1 : Moving Average Type (0: SMA, 1:EMA, 2:SMMA, 3:LWMA)

Momentum Settings

Momentum.Period = 14: Momentum Period

Momentum.Level = 100: Momentum Level

RVI Settings

Get More Additional Bonuses at <http://www.sublimeforexchampions.com>

RVI.Period = 14: RVI Period

RVI.Level = 100: RVI Level

Force Settings

F0.Period = 14: Force Indicator Period

Bull Settings

Bull.Period = 14: Bull Indicator Period;

Bear Settings

Bear.Period = 14: Bear Indicator Settings

ATR.Period = 21: ATR Period

Time_shift = 0: The shift relative to the current candle (number of periods back) where the data is to be taken from. If this value equals to 0, it means that all the calculation of the supported indicators are calculated according to the current candle. If it is equals to 1, all the calculation are based on the previous candle next to the current candle and so on.

You can change these settings to any value that you find best suited for your trading needs.

Get More Additional Bonuses at <http://www.sublimeforexchampions.com>

How to use the software



The screenshot displays a table titled "Perpetual Profits Software" with 12 columns representing different indicators and 8 rows representing different timeframes. The indicators are: MA1, MA2, MA3, MACDRSI, CCI, ADX, STO, MOM, RVI, FOR, BULL, BEAR, and ATR. The timeframes are: 1M, 5M, 15M, 30M, 1H, 4H, D1, and W1. Each cell in the table contains a value, either "UP", "DN", "OS", or "OB", and the ATR column contains numerical values. The values are color-coded: red for "DN", blue for "UP", yellow for "OS", and white for "OB".

	MA1	MA2	MA3	MACDRSI	CCI	ADX	STO	MOM	RVI	FOR	BULL	BEAR	ATR
1M	DN	DN	DN	DN	DN	DN	DN	UP	DN	UP	DN	DN	0.00051
5M	DN	DN	DN	DN	DN	DN	CS	OS	UP	DN	UP	DN	0.00101
15M	DN	DN	UP	UP	DN	DN	UP	DN	DN	DN	DN	DN	0.00130
30M	DN	UP	UP	DN	DN	DN	CS	UP	DN	UP	DN	UP	0.00139
1H	DN	UP	UP	DN	UP	OS	UP	UP	DN	UP	DN	UP	0.00228
4H	UP	UP	UP	DN	UP	UP	UP	DN	UP	DN	UP	UP	0.00514
D1	UP	UP	UP	UP	UP	OB	UP	OB	UP	UP	UP	UP	0.01333
W1	UP	UP	DN	UP	UP	OB	CS	OB	UP	UP	UP	UP	0.03730

As you can see from the screenshot above, the software displays information of 12 different indicators under 8 different timeframes. If you look horizontally, you are able to know how the current trend in a specific timeframe would be. If you look vertically, you will know how one indicator is moving in different timeframes. This software helps you to quickly get the information across multiple indicators and across multiple timeframes.

You can use this software as an additional trading tool to help you confirm the current trend. You can use it in combination with your existing trading system.

Get More Additional Bonuses at <http://www.sublimeforexchampions.com>