


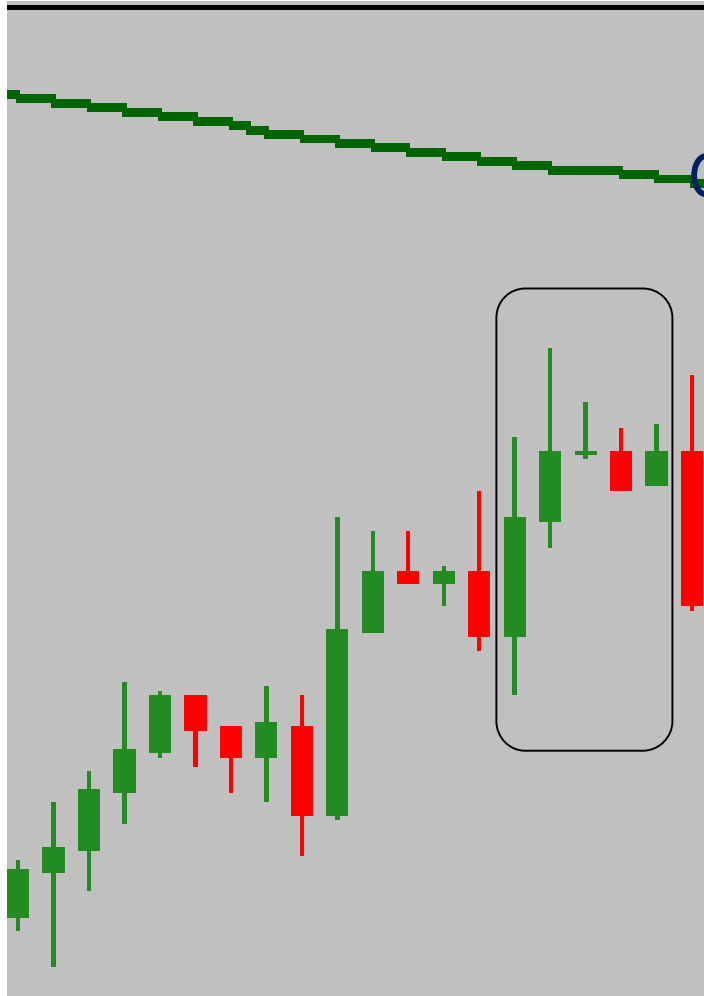
INPUTS

| | |
|---|--------------------------------------|
| <div>----MA Details----</div> <div> Moving Average</div> <div>MA Period: [double]</div> <div>MA Method: [Simple / Exponential / Smoothed]</div> <div>MA Shift: [integer]</div> <div>// MA “apply to” will be default “Close”</div> <div>----Pendings----</div> <div>Pending Limit Distance(X)[integer(pips)]</div> <div>After # Candles (Z) [integer]</div> <div>-----</div> | Will be used for our new logic |
| <div>Spread</div> <div>Slippage</div> <div>Close Position With Opposit Signal</div> <div>Max num of open order</div> <div>SL</div> <div>TP</div> <div>Trailings</div> <div>BreakEven</div> <div>-----</div> <div>Friday Exit</div> <div>UseTimeSettings</div> <div>Monday:....</div> <div>...</div> <div>...</div> | Same with old EAs (With Friday exit) |

Our EA will work according to the above MA. It will use pending Limits. (I'll use MA Shift= 1 and so, it will be easy for our EA.)

LET'S SEE FUNCTIONALITY

Think that; $X=10$, $Z=5$. We are at the last seen red candle. It is still moving



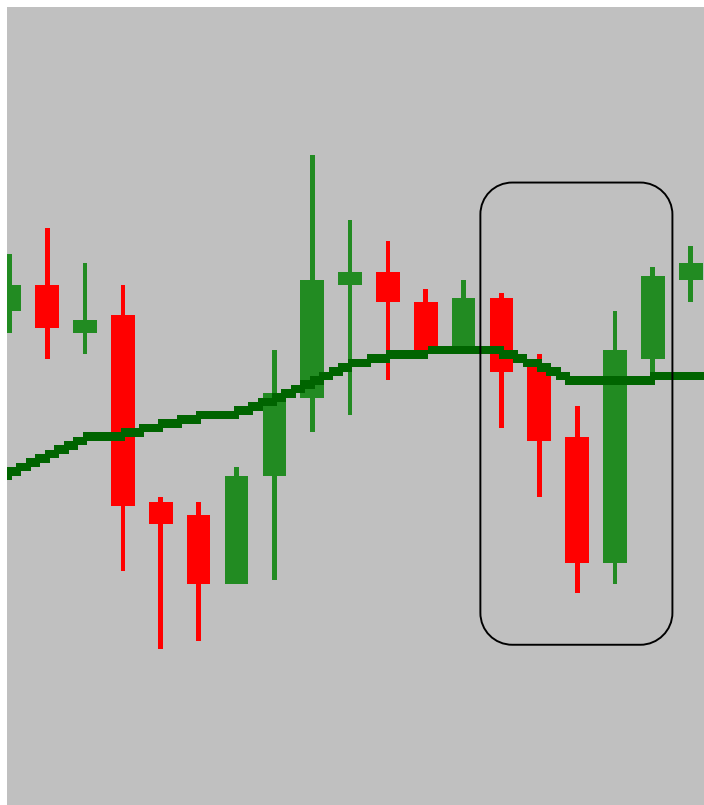
1.12360

X (10 pips)

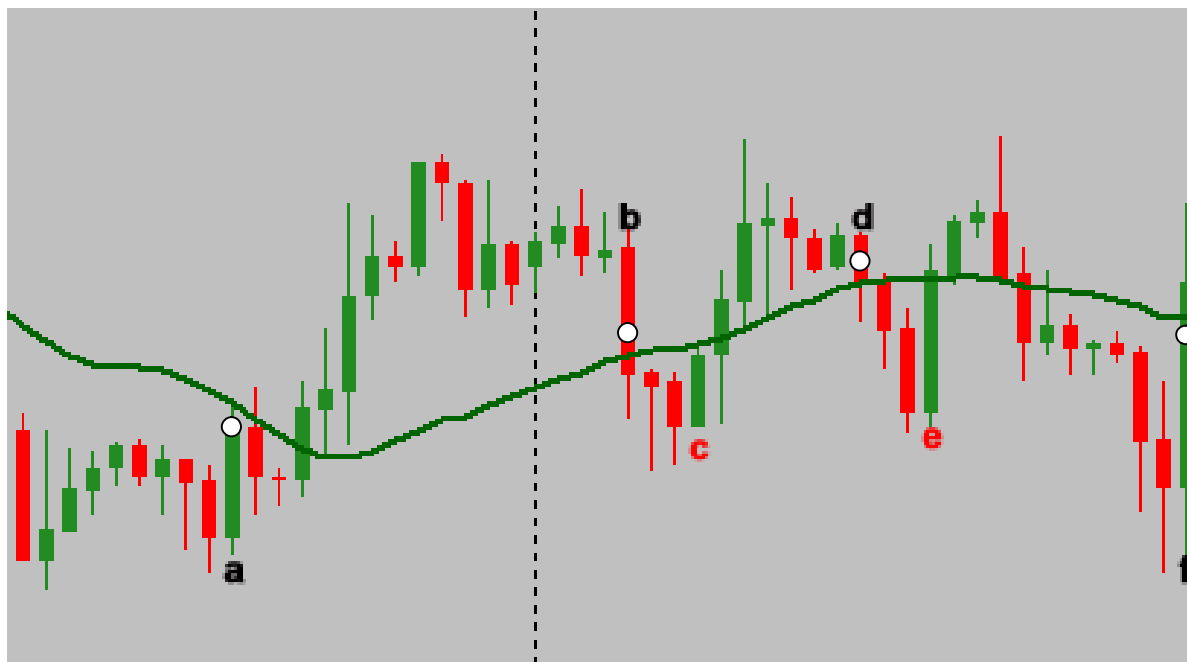
1.12260

We will put a SellLimit at 1.12260

NOTE: Before our candle, at least last 5($Z=5$) candles had to close below the MA. In this example it is ok, because the shown 5 candles closed below the MA.



In this example, we can not create a BuyLimit or SellLimit any time. Because, the last 5 candles did not close below or above the MA. So, the situation is not suitable for any pending limit



We have opened a SELL during the “candle – a ”. (We had a SellLimit and it is activated)

Because of not suitable situation (First Z=5 and then X=10 inputs) we could not open any new order till “candle – b” (We did not create any BuyLimit **or** our BuyLimit did not activated to real BUY)

We have opened a BUY during the “candle – b” (We had a BuyLimit and it is activated)(if our Close pos with op sig = true, When the BuyLimit activated to a real BUY order, we will close the SELL that was opened during “candle – a”)

We could NOT create a SellLimit before “candle – c” and so could not open a SELL during the “candle – c ” because of Z=5.

We have opened a BUY during the “candle – d ”. (We had a BUYLimit and it is activated)

We could NOT create a SellLimit before “candle – e” and so could NOT open a SELL during the “candle – e ” because of Z=5.

Because of not suitable situation (First Z=5 and then X=10 inputs) we could not open any new order till “candle – f”. During “candle – f”, we have opened a SELL (We had a SellLimit and it is activated)

You don't need to use virtual PendingLimits. You can show them on screen.