

Indicator Input Panel

MOVING AVERAGE

MA_FilterOn/Off

MA_Slow100

MA_Slow_TypeEMA SMA/EMA

MA_Med50

MA_Med_TypeEMA

MA_Fast21

MA_Fast_TypeEMA

STOCHASTIC

Stoch_FilterOn/Off

Stoch_%K8

Stoch_%D3

Stoch_Slowing3

Stoch_PriceFieldLow/High OR Close/Close

Stoch_MASMA

ATR

PERIOD14

ATR1_MULTIPLIER1.00

ATR2_MULTIPLIER1.50

DRAW SIGNAL

Draw_SignalOn/Off

Draw_TypeARROWARROW/DOTS

Draw_Sizexxxyou define

Alert Settings

Alert On/OffOn

Trend FilterYes Yes/No; Yes mean I only want signal following the direction of trend which is the MA

Minute to Alert before close of current Candles10 Setting to be in minutes of current opened time frames; IF set to ZERO will be alert at candle close

Number of Alerts per Minutes2

Alert MessageON

Alert SoundON

Alert EmailOFF

Alert Push NotificationON

SoundfileIF NO FILE SELECTED PLEASE USE DEFAULT

Colour Input Panel

HA_BULLLIME

HA_BEARRED

DRAW_SIGNAL_BULLLIME

DRAW_SIGNAL_BEARRED

Defaults Colours

This is MT4 Build In Stochastic Oscillator

Stochastic Oscillator

Parameters

%K period:8

%D period:3

MA method:Simple

Fixed minimum0

Slowing:3

Price field:Low/High

Fixed maximum100

Colors

Main:Lime

Signal:Red

Levels

Visualization

Stochastic Oscillator

Parameters

Main:Lime

Signal:Red

Colors

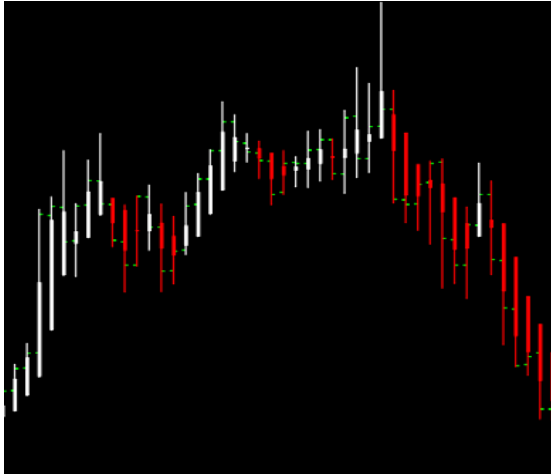
Levels

Visualization

DENOTATION FOR PROGRAMMERS UNDERSTANDING

HA	-	HEIKEN ASHI
MA	-	MOVING AVERAGE
SMA	-	SIMPLE MOVING AVERAGE
EMA	-	EXPONENTIAL MOVING AVERAGE
TF	-	TIME FRAME
INDI	-	INDICATORS
ATR1	-	DEFINED ATR PERIOD OF ATR X MULTIPLIER
ATR2	-	DEFINED ATR PERIOD OF ATR X MULTIPLIER

This is MT4 Build In HEIKEN ASHI



Requirement of The Indicators

- 1 Paint the normal japanese candlestick bars with MT4 Built-In Heiken Ashi Indicator Colours SIGNAL
I hate the MT4 HA candle
- 2 To allow change of the candle colours in setting panels to any preferable colours
- 3 Give Alerts When the Conditions meet as per MA & Stoch Criteria Meet
- 4 All above shown will be defaults settings

Remarks

MAKE SURE you have the skill to do a NO-REPAINT indicator as I am USING for LIVE trading in intraday time frames

I will test live to compare and make sure it works as per the MT4 Built-In Heiken Ashi Indicators SIDE BY SIDE

Built In HEIKEN ASHI defaults - Colours; WHITE=BULLISH/LONG/UPTREND; RED=BEARISH/SHORT/DOWNTREND

TREND FILTER=YES=GIVE ALERT ON BULLISH CASE ONLY; If TREND FILTER=NO=Give both TREND & COUNTER TREND
*SEQUENCES IS IMPORTANT, Only check condition if there is colour change of heiken ashi indicators

- 1 Bullish Case - COLOUR CHANGED from RED to WHITE
 - 2 Before the close of this first potential white candle to the minute to alert specified in setting check the following
- 2a MA_FAST > MA_MED > MA_SLOW
2b Stoch_Main Line > Stoch Signal Line

- 1 Bearish Case - COLOUR CHANGED from WHITE to RED
 - 2 Before the close of this first potential RED candle to the minute to alert specified in setting check the following
- 2a MA_FAST < MA_MED < MA_SLOW
2b Stoch_Main Line < Stoch Signal Line

TIME FRAME - CURRENT CHART SYMBOL INDICATOR ATTACHED - HA BUY/SELL - CURRENT PRICE - NEAREST HIGH/LOW - ATR1=xxx - ATR2=xxx AT "TIME STAMP TO SECONDS"

EXAMPLE

- 1 M30 - EURUSD - HA BUY - 1.3055 - NL 1.3000 - NLD 55 Pips - ATR1=30 Pips - ATR2=45 Pips - 20:25:35
- 2 M30 - EURUSD - HA SELL - 1.3055- NH 1.4000 - NLD 45 Pips - ATR1=30 Pips - ATR2=45 Pips - 20:25:35