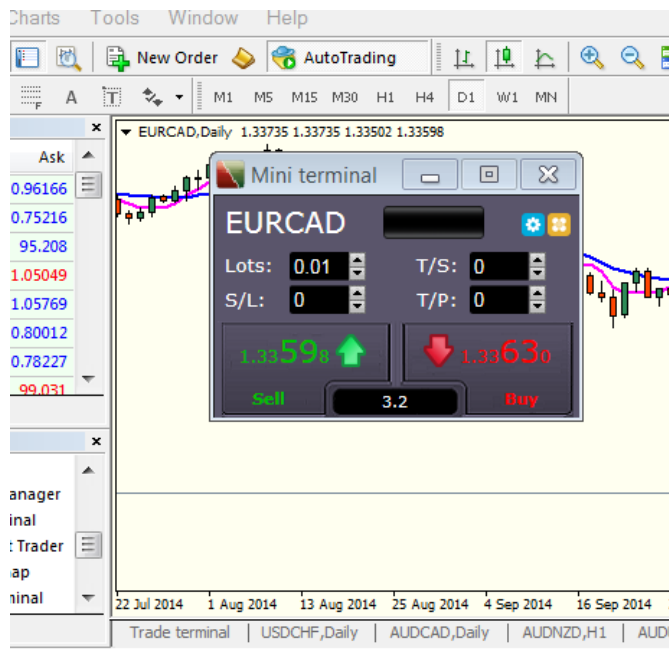


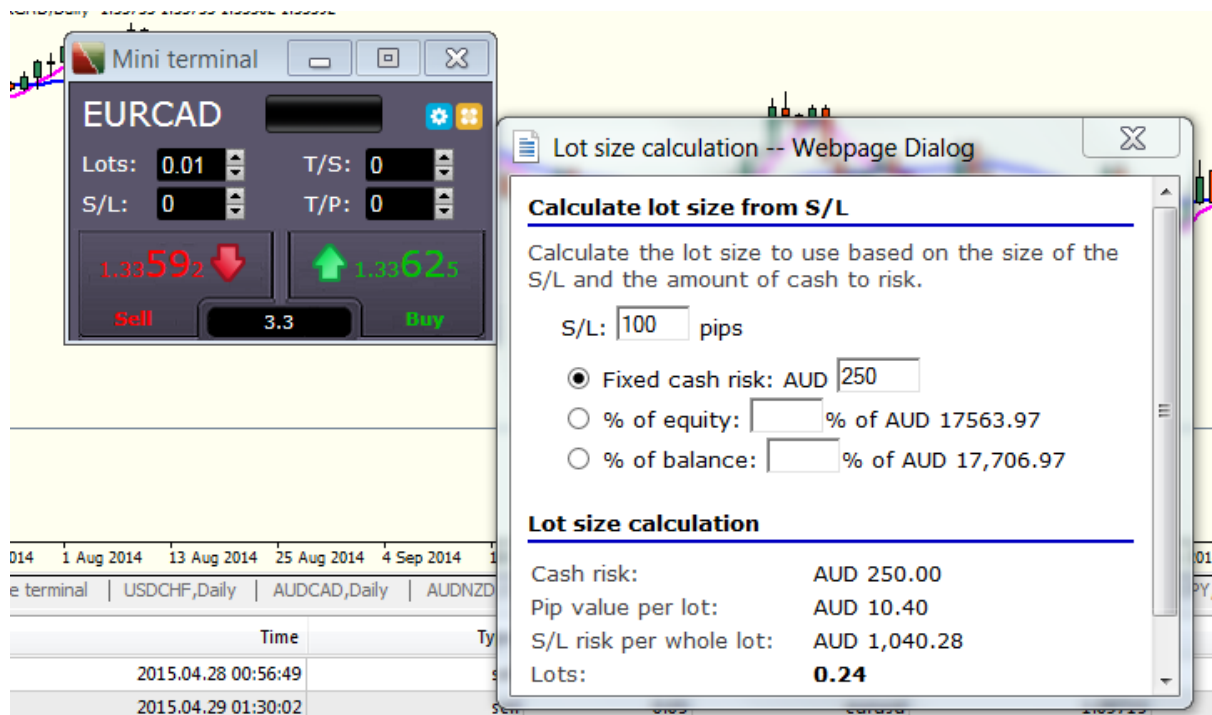
## Suggested features and layout of trade management terminal (TMT)

### Current Status

I use the mini terminal by FXBlue to place and size order.



Right click on the lots block will open a trade size calculator:



It does the job of position sizing well but require another window. I would like it in the same panel. I need trade size calculator with only:

Input: SL/TP(pips) , Fixed cash risk → lots size

Preferably TMT Panel is can be attached to each open chart and sync to its instrument. As it works with mini terminal.

Note about instruments: I primarily need it for currencies but would also like to use it for other instruments offered by my broker such as indices.

In the attached example once I apply the mini terminal to EURCAD then it automatically recognize it.

If the size of my requested TMT is too big to fit on the chart (hopefully not ) then it should be possible to detach and I would need a way to make sure the TMT currency is the same as the chart I am working on to avoid mistakes. Possibly drop down mane of the TMT t choose instrument?!

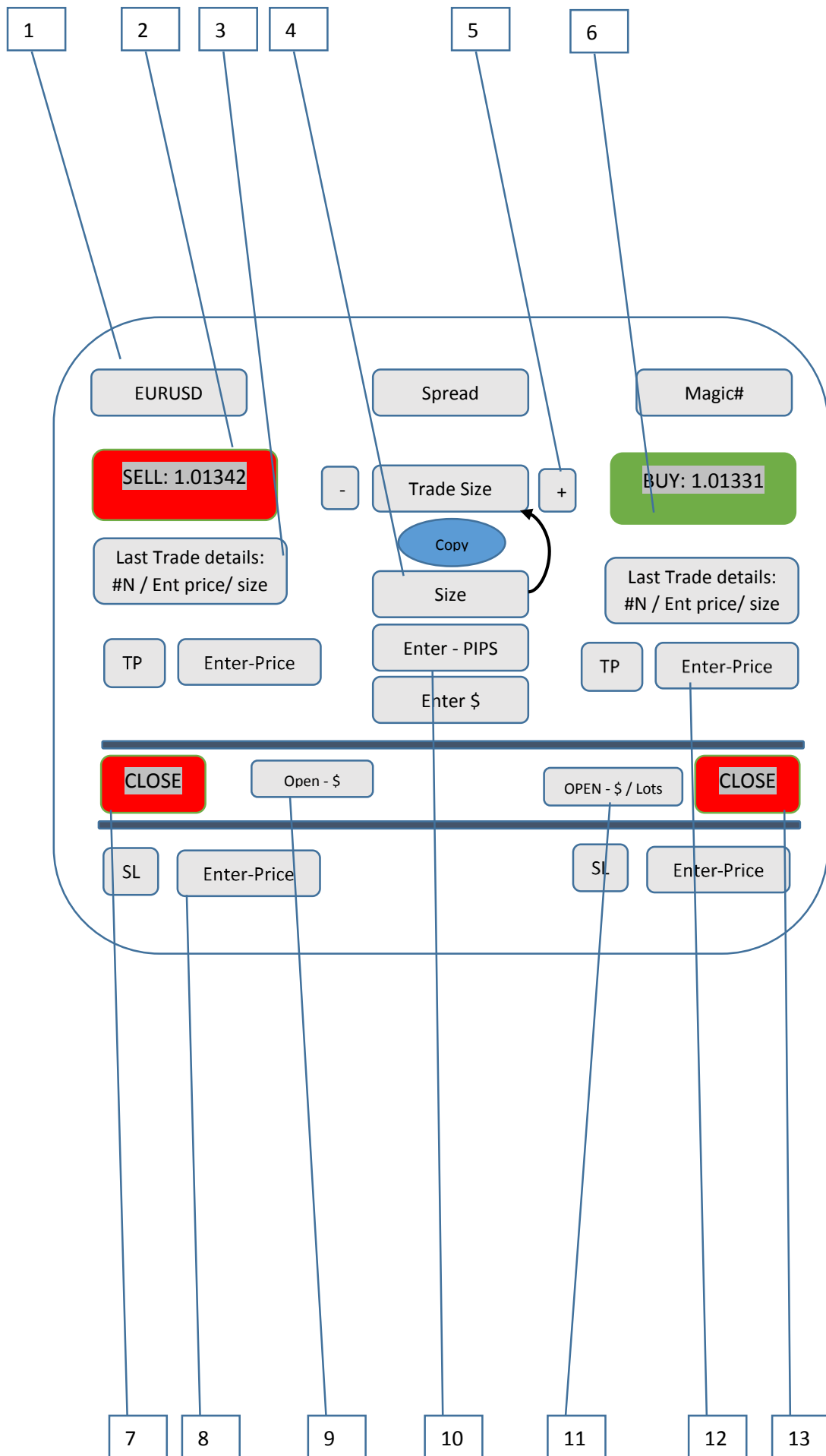
What I would like also to add to this panel is:

- 1 – Ability to apply fixed price SL/TP to all long or all short position
- 2 – Apply magic # to new trades
- 3 – Close all long / close all short

Additional Information to be shown:

- 1 – Total \$ value of all long / all short.
- 2 – Total LOTS of all long / all short.
- 3 – Nice to have : “what if scenario” : Assuming I have several positions on long (or short) and at the current price is XXX. I want to be able to write price and get the overall of all long (or short) position value if the price reach this price mark.

See below a possible layout of the TMT. Hopefully my drawings are not confusing and if there are alternative ideas I am happy to hear.



1. Indicate the instrument if the TMT is attached to a chart or be able to choose from drop down menu if it is detached
2. The BUY/SELL buttons should have more presence. Colour applied. And price appearing on them
3. Last trade details should show:
  - a. #N = if there are 5 open trades, in the same direction, the it should show #5. If there are 2 open trades in the same direction it should show #2
  - b. Entry price = should show entry price on the last trade
  - c. Size = should show lot size of the last trade and the total lot size on this direction. For example, if there are 5 long trades with total of 0.85 LOTS and the last one is 0.15 LOTS then it should show 0.15/0.85
  - d. This info box should look like: 

#7	1.15321	0.15/0.85
----	---------	-----------
4. Position Size: this is a calculation based on the 2 details entered below. PIPS and \$
5. Trade size can be entered / changed in 3 ways:
  - a. Manually.
  - b. Copied from position size calculator (item 4)
  - c. Adjust its size in micro lots with +/-
6. BUY – same as item 2 should represent quotes coming from the broker servers.
7. Close ALL = this button should close all short trades
8. Set SL ALL = manual entry of price and SL button should set same SL value to all short trades. Same thing on the right hand side for the long.
9. Total \$ value of all short trades
10. Position Size calculation: 2 boxes to enter PIPS and \$
11. Same as 9 but for all long
12. Set TP ALL = same as 8 this should allow to set fixed price TP value to all long trades and on the left to all short trades
13. Close ALL = This button should close all long positions