

Minotaur

Inputs

3 ema LTF (Trend high/low settings) (fast ema) (slow)(Trend EMA)

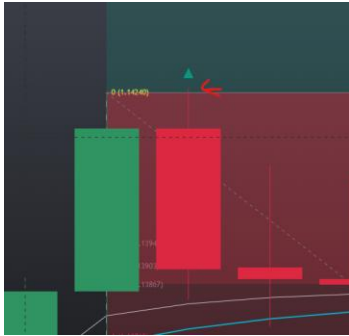
2 ema HTF(Trend high/low/close settings) (confirmation ema)

Trailing ATR SL (activates at certain RR)

TP RR

SL FIB

Entry (input) points above or below candle So this doesn't happen



Max open trades

Trading time

At candle open check EMA settings.

Take Previous candle for buystop, SL and TP

LTF entry criteria

BUYS: Fast needs to be above Slow EMA

Slow EMA need to be above Trend EMA HIGH

SELLS: Fast Needs to be below Slow EMA

Slow EMA need to be below Trend EMA LOW

EMA



Inputs

Style

Visibility

Length

100

Source

High



This is the HIGH/LOW setting

Price needs to retrace between the Fast EMA and the Trend EMA (doesn't have to close between it only a wick is enough, this will count as our Trigger)

BUYS we put a buy stop above the lowest high made after a candle has made a OHLC between the Fast and trend EMA. (Counting from trigger candle to current price)

SL is based on ATR

[ATR Stop Loss Finder](#)

[veryfid](#)

7.1 K

Any ATR stoploss calculator works this one just visualizes it nicely what I mean.

TP is based on RR 1:1/2/3/4 super standard stuff

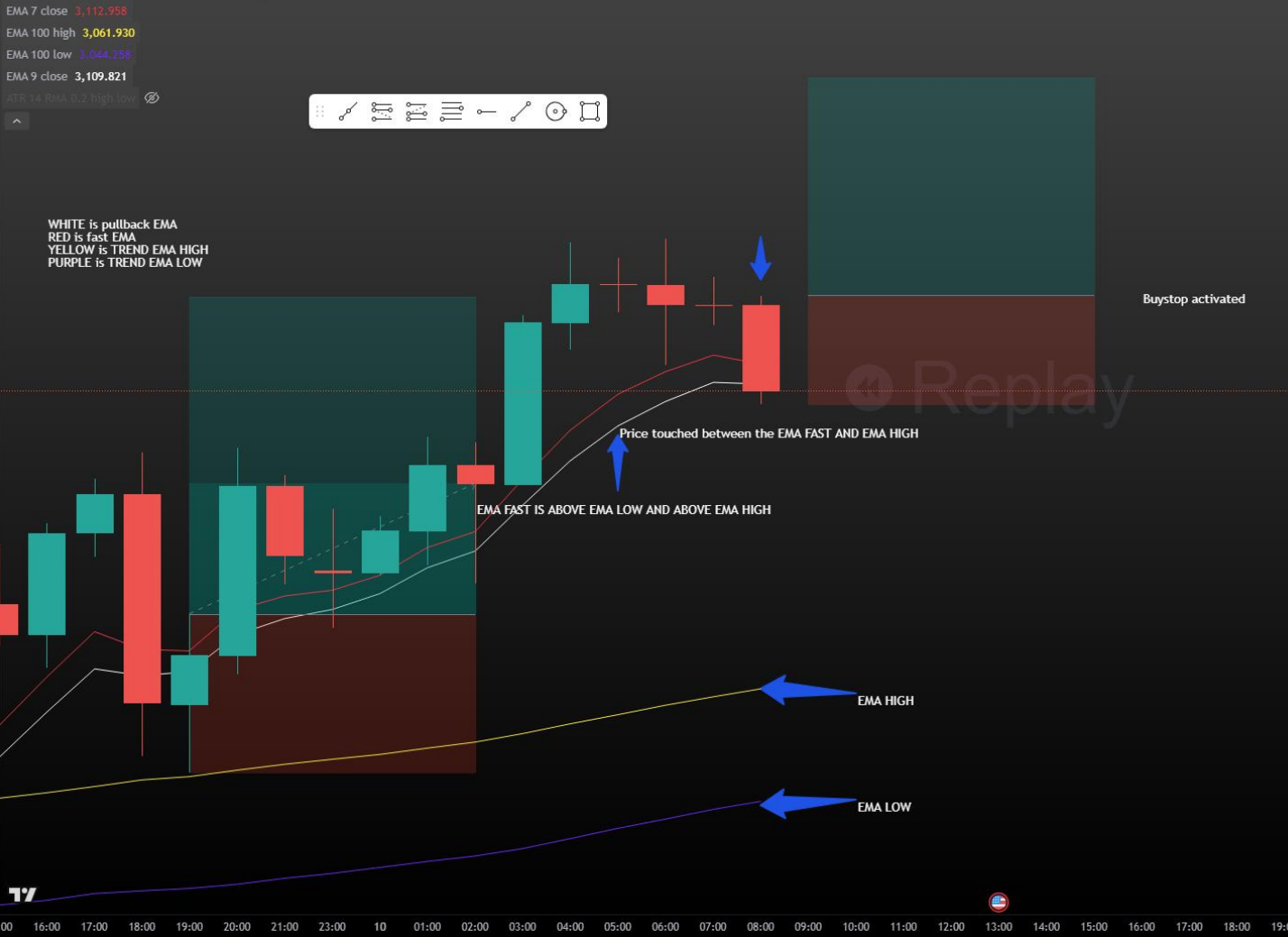
Sells is vice versa

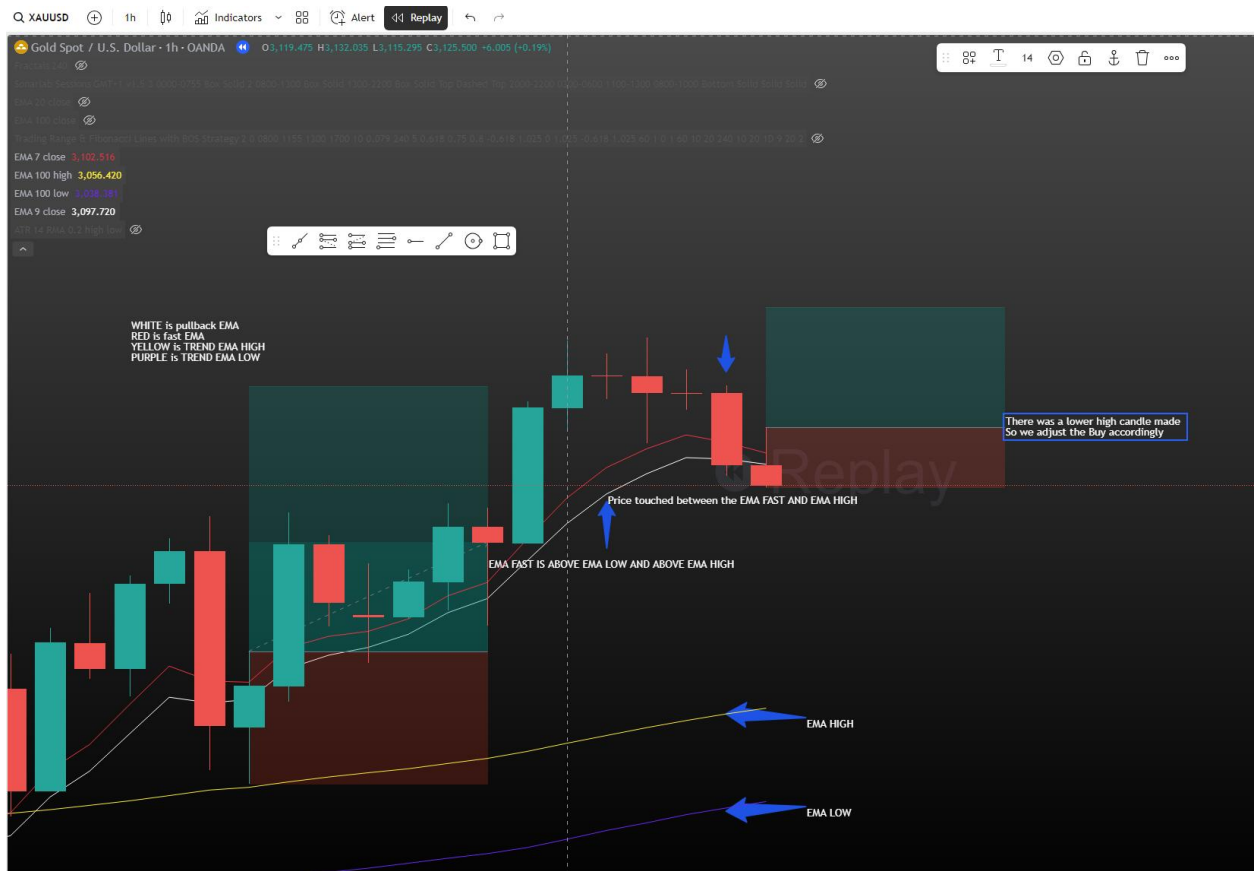
HTF

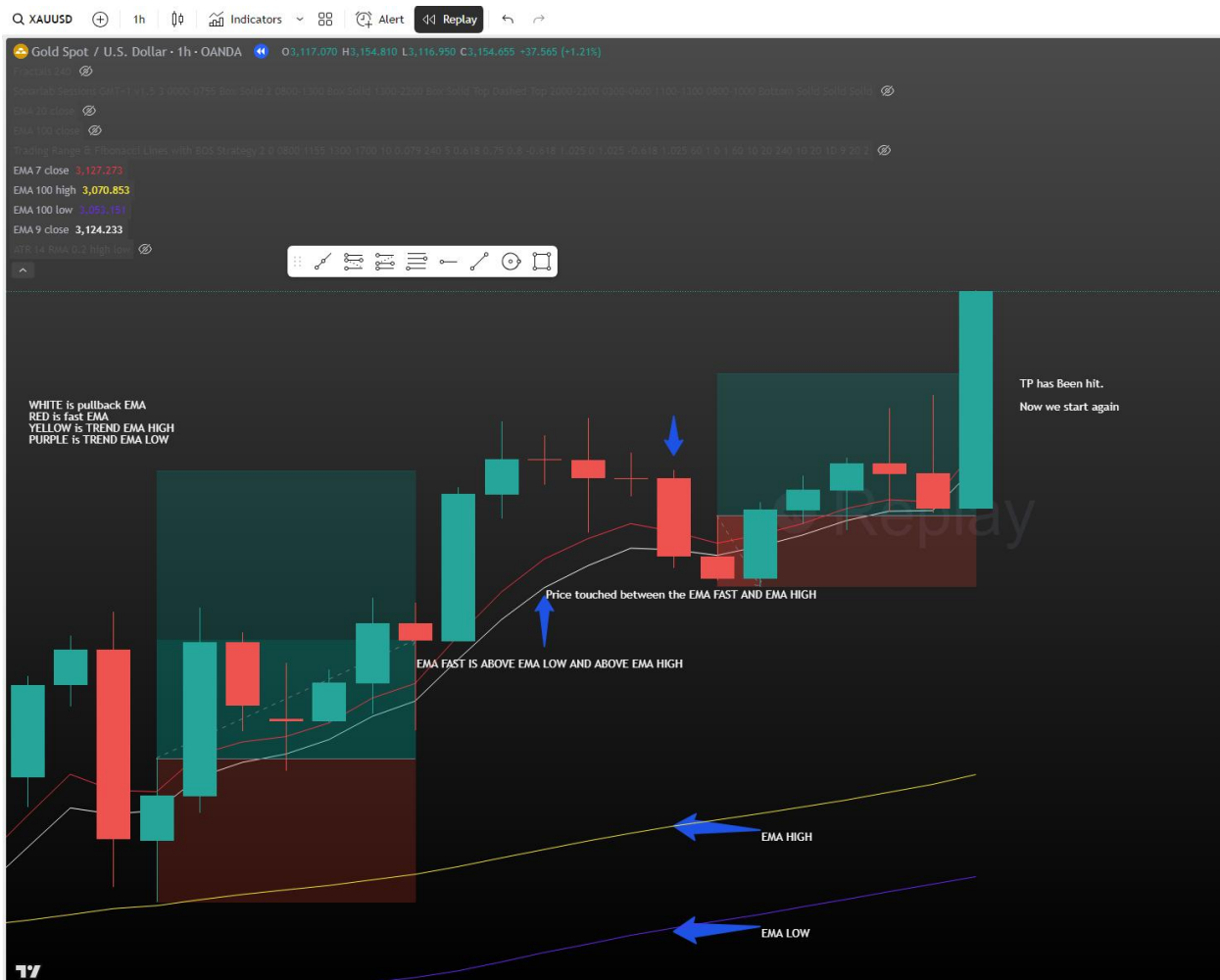
Fast ema > Slow ema is bullish

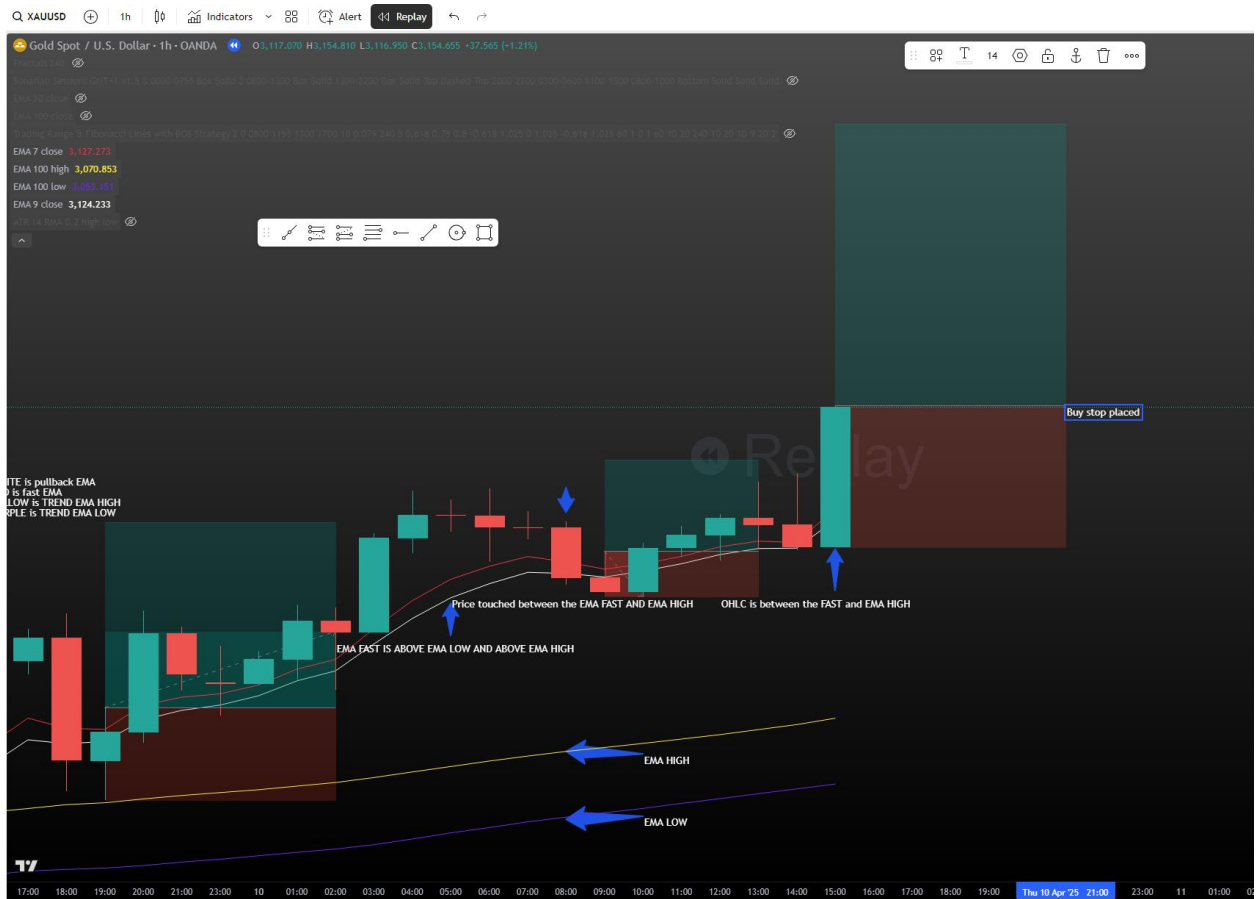
Slow ema > Fast ema is bearish

Gold Spot / U.S. Dollar · 1h · OANDA
Standard Session GMT+1 v1.0 3.0000 0.750 Box Solid 2 0.000 1.000 Box Solid 1.000 2.000 Box Solid Top Dashed Top 2.000 2.000 0.000 0.000 1.000 1.000 0.000 0.000 Bottom Solid Solid Solid
EMA 20 close
EMA 100 close
Trading Range & Floor/Stop Lines with BOS ST/Strategy 2 0.0800 1155 1300 1700 10 0.979 240 5 0.618 0.75 0.8 -0.618 1.025 0 1.025 -0.618 1.025 50 1 0 1.60 10 20 240 10 20 10 7 20 2
EMA 7 close 3,112.958
EMA 100 high 3,061.930
EMA 100 low 3,044.358
EMA 9 close 3,109.821
ATR 14 RMA 0.2 high low











This is the process of how we look for and enter trades.

This aligned with our HTF Bias so we look for small pullbacks in the trend.

