

BBMA
by Oma Ally

S = **S bar**

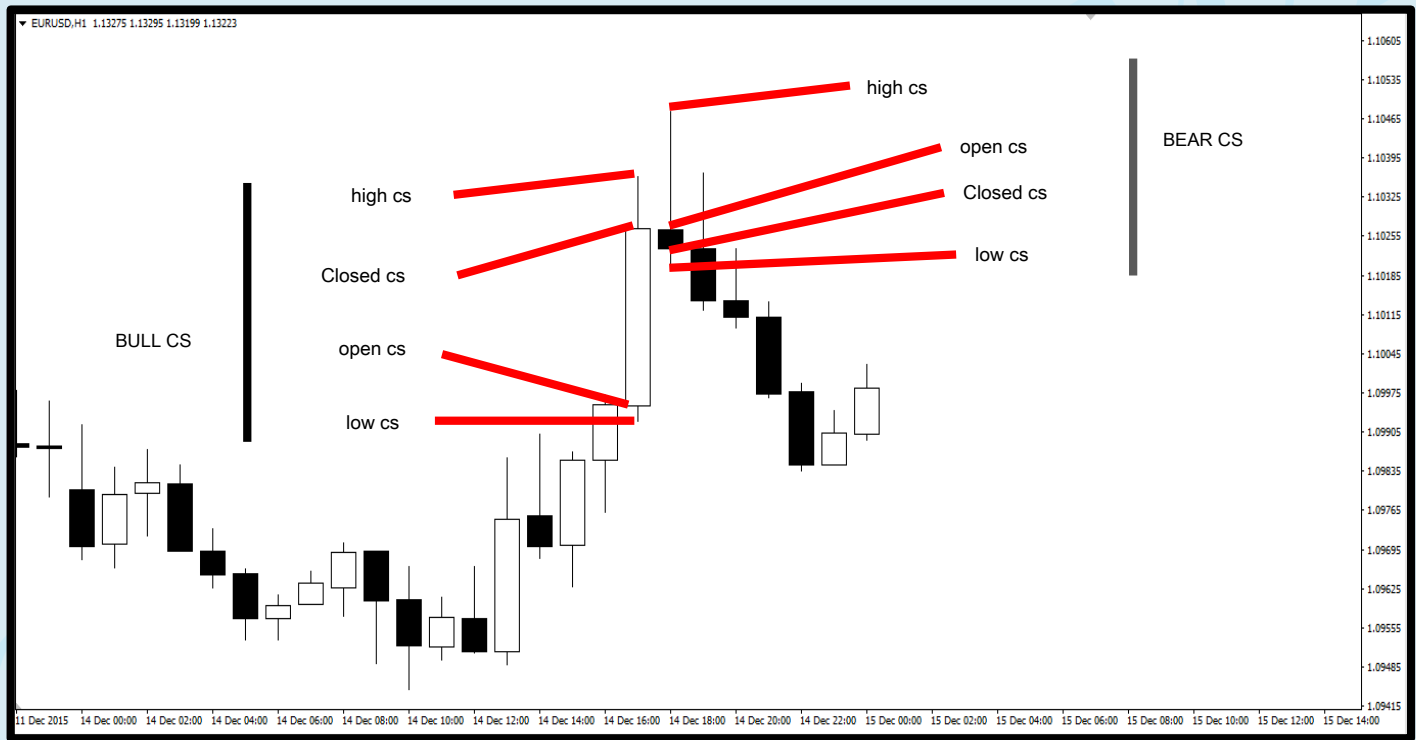
S = **S bar**

S = **S bar**

Basic BMA	2	Momentum	38
Forex Basics	4	diagram BMA	40
setting BMA	5	Setup Complete BMA	41
bollinger bands	6	Setup sequence BMA	43
Function BB	11	Extrem form	44
moving Average	14	Zone Zero Loss	51
Moving Average 50 (A50)	18	The - the Zone Zero Loss	53
Basic + MA	19	Multi Time Frame	60
Signal - Setup - Entry	20	travel Candle	61
extrem	21	Traveling in a small candle TF Monthly	62
but Payer	24	Travel Weekly candle small TF	66
MHV (Market Share Volume)	26	Travel small candle in Daily TF	69
Types of MHV	27	Account Strategy	73
CSA (Directions Candlestick)	31	Trade Account Strategist	75
Reentry (Setup)	33	I Scalper Indicator	76
Hidden Secrets	34		

BASIC BMA

BASIC FOREX



SETTING BMA

- **Bolinger band**

- Period: 20
- Deviations: 2
- Shift: 0
- Apply to: Close
- Style: Blue Dodge

- **Ma 5 Hi**

- Period: 5
- MA Method: Linear Weighted
- Apply to: High
- Style: Red

- **Ma 10 Hi**

- Period: 10
- MA Method: Linear Weighted
- Apply to: High
- Style: Yellow

- **Ma 50**

- Period: 50
- MA Method: Exponential
- Apply to: Close
- Style: Lime

- **Ma 5 Low**

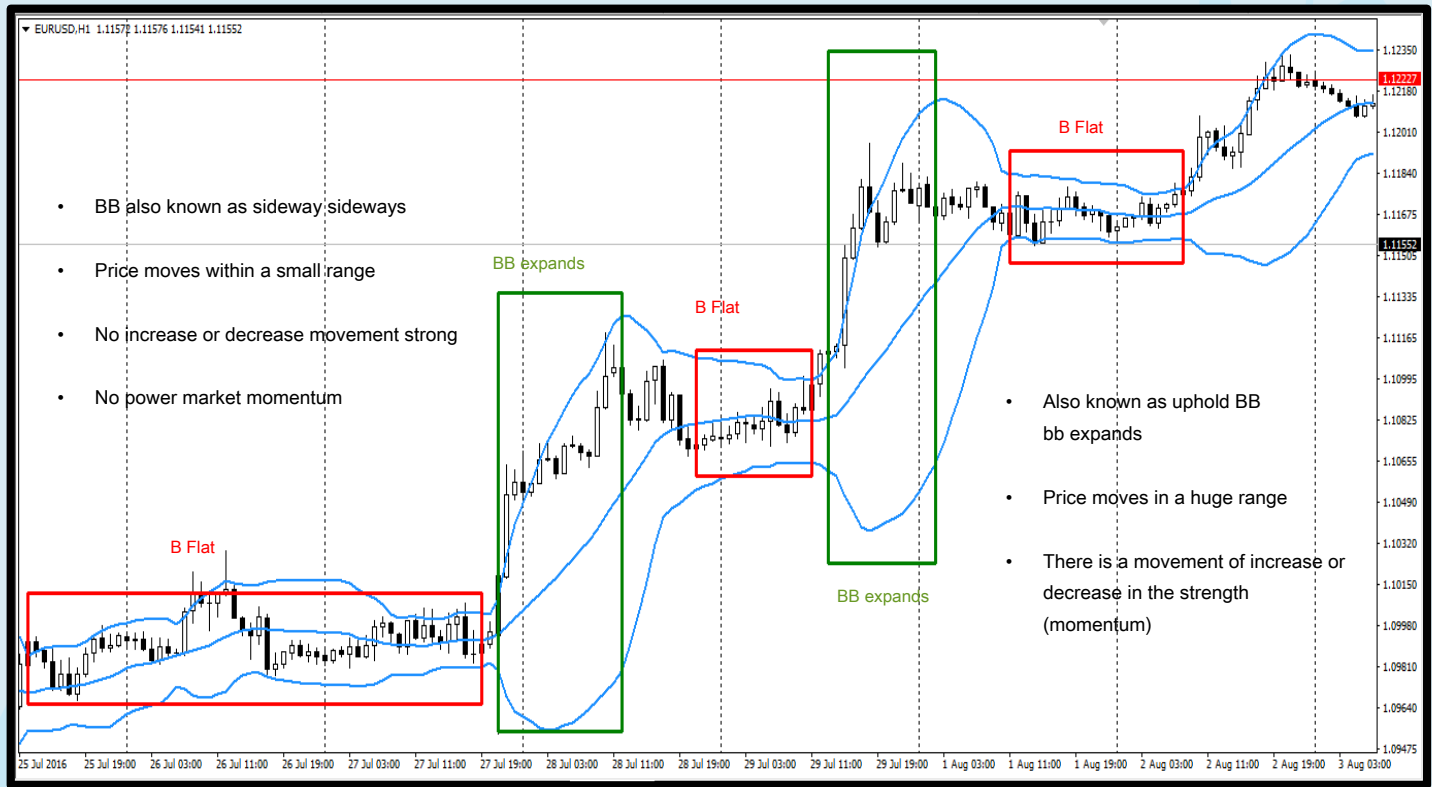
- Period: 5
- MA Method: Linear Weighted
- Apply to: Low
- Style: Magenta

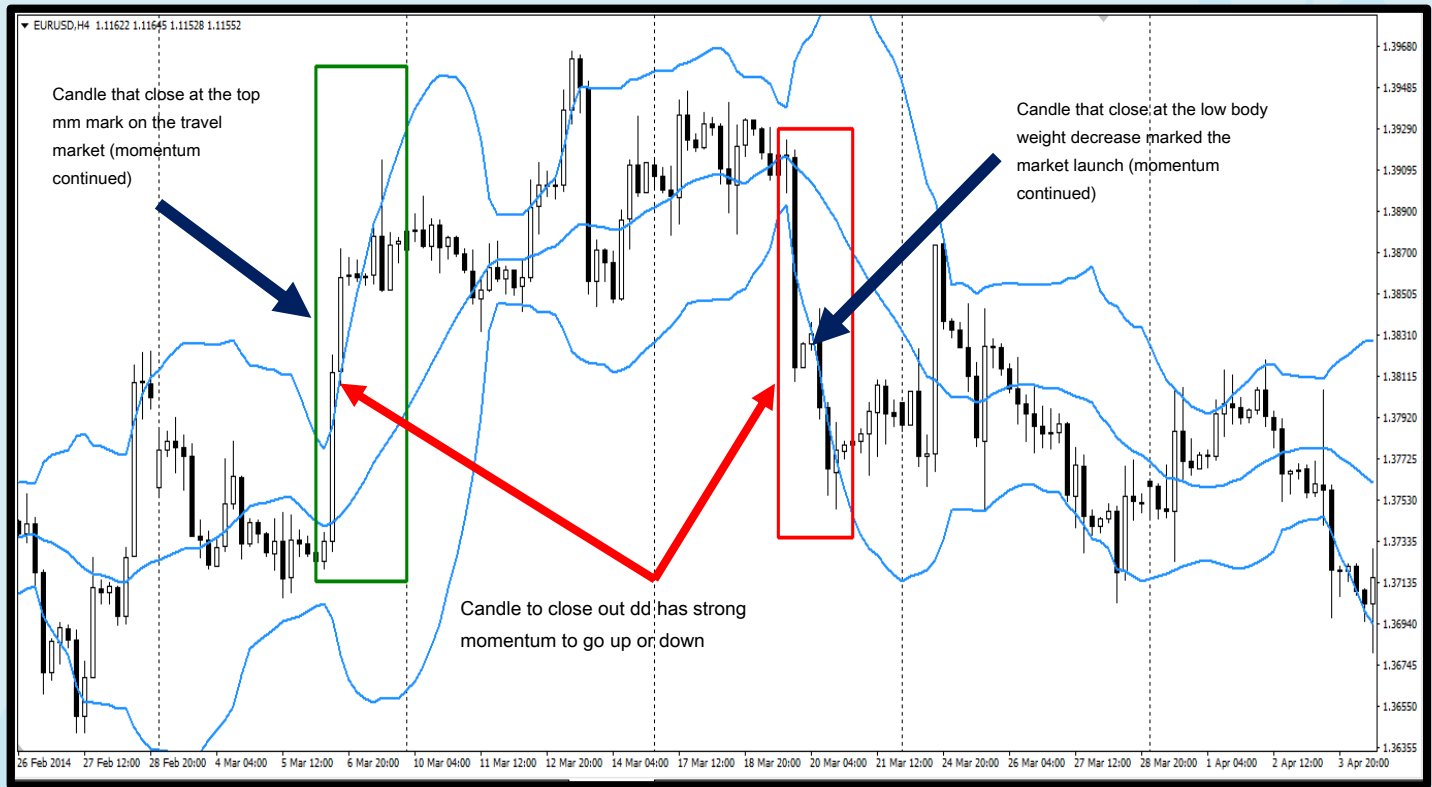
- **Ma 10 Low**

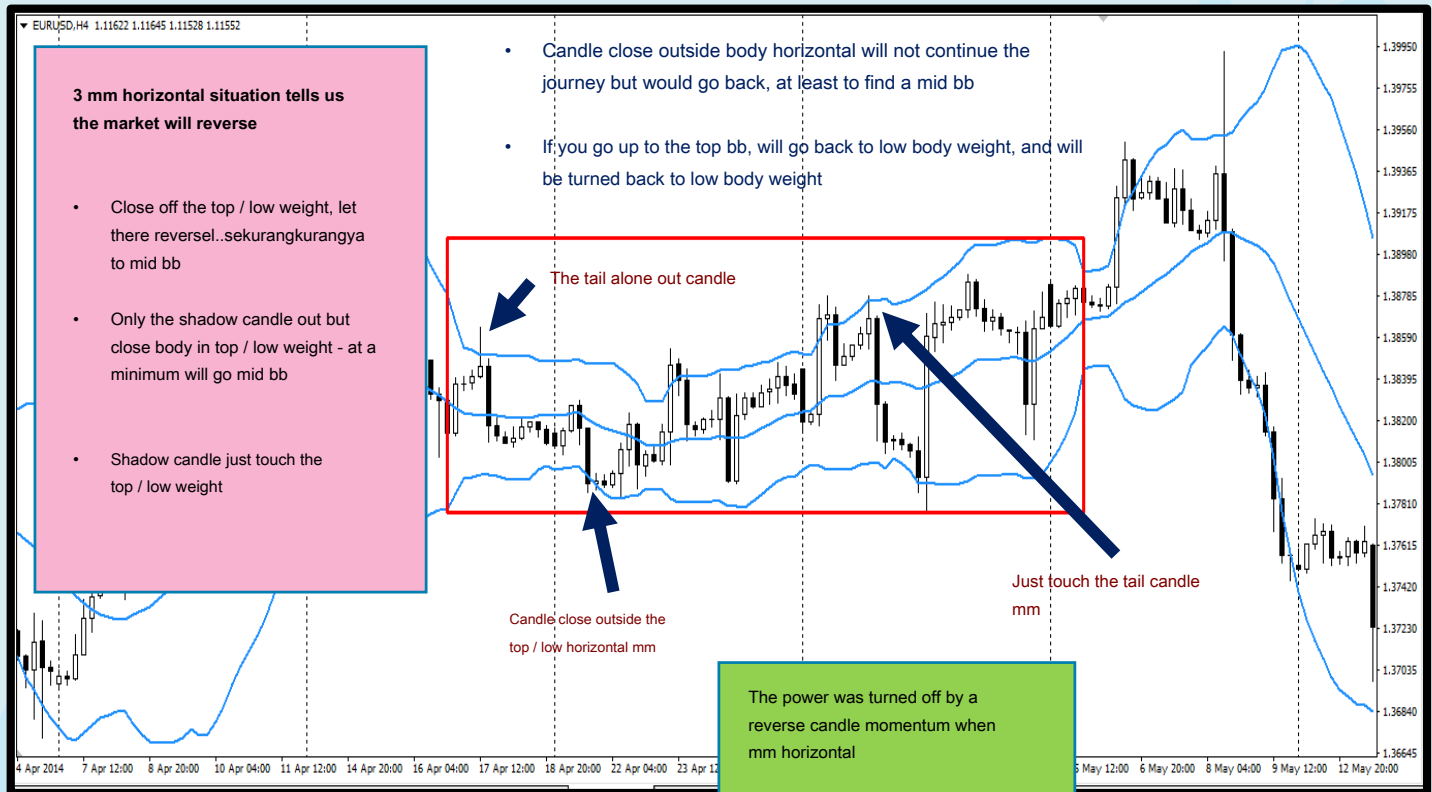
- Period: 10
- MA Method: Linear Weighted
- Apply to: Low
- Style: White

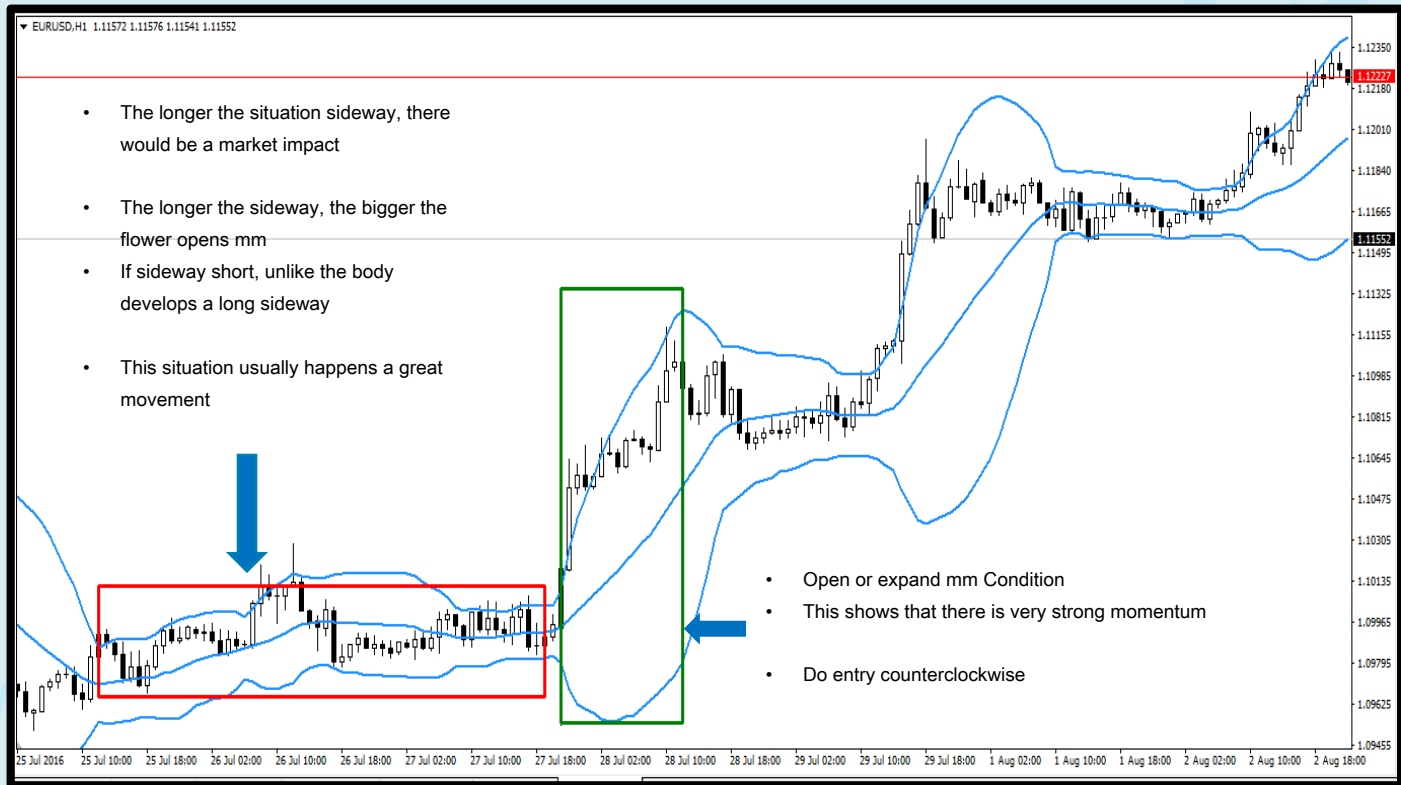
BOLLINGER BAND

- Bollinger Band (BB) is an important indicator in BMA
- Bollinger Band (BB) There are three lines that we call the body top, mid and low mm mm
- Bollinger band is moving support and resistant
- As a determinant of the direction of increase or decrease and also proceeding
- There are 2 types of body weight
 - **BB horizontal**
 - a) If there is no momentum in the market, Bollinger band will shrink and shrink)
 - b) Also known as sideways
 - **BB expands**
 - a) Indicates the beginning of market power
 - b) There is a strong showing movement





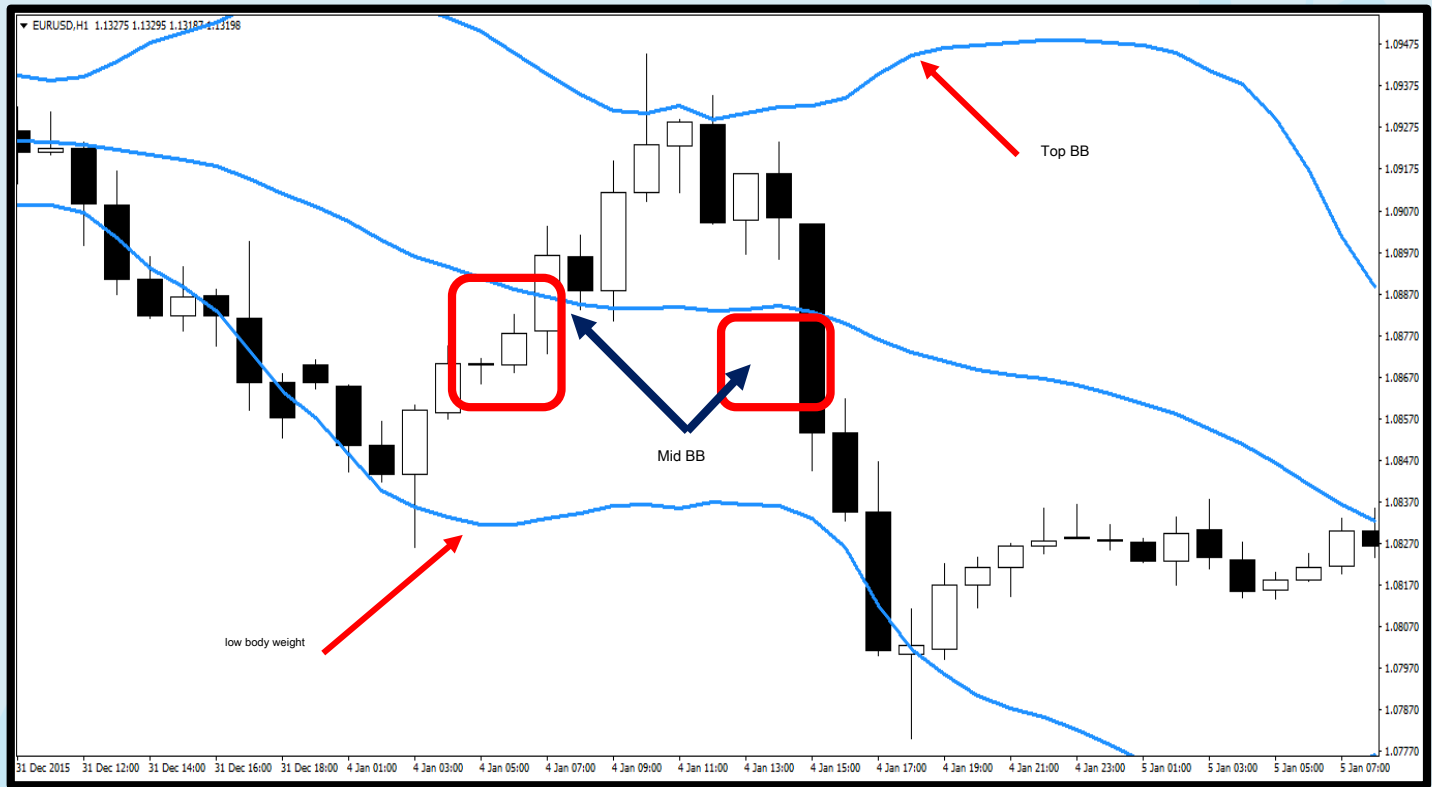




FUNCTION BB (Bolinger Band)

- Top BB
 - As a sign of the beginning of the movement of the overall increase *market*
 - Controlling increase either continuously or off
 - if *candlesticks* (cs) close out **bb top fluffy** , Marking the continued rise signal
 - Whenever there *candlesticks* (cs) *close* outside the body, then it will be continued momentum
 - If there is no momentum, *market* will make changes. power *market* if there is no *Candlesticks* (cs) not surpassed *top bb*

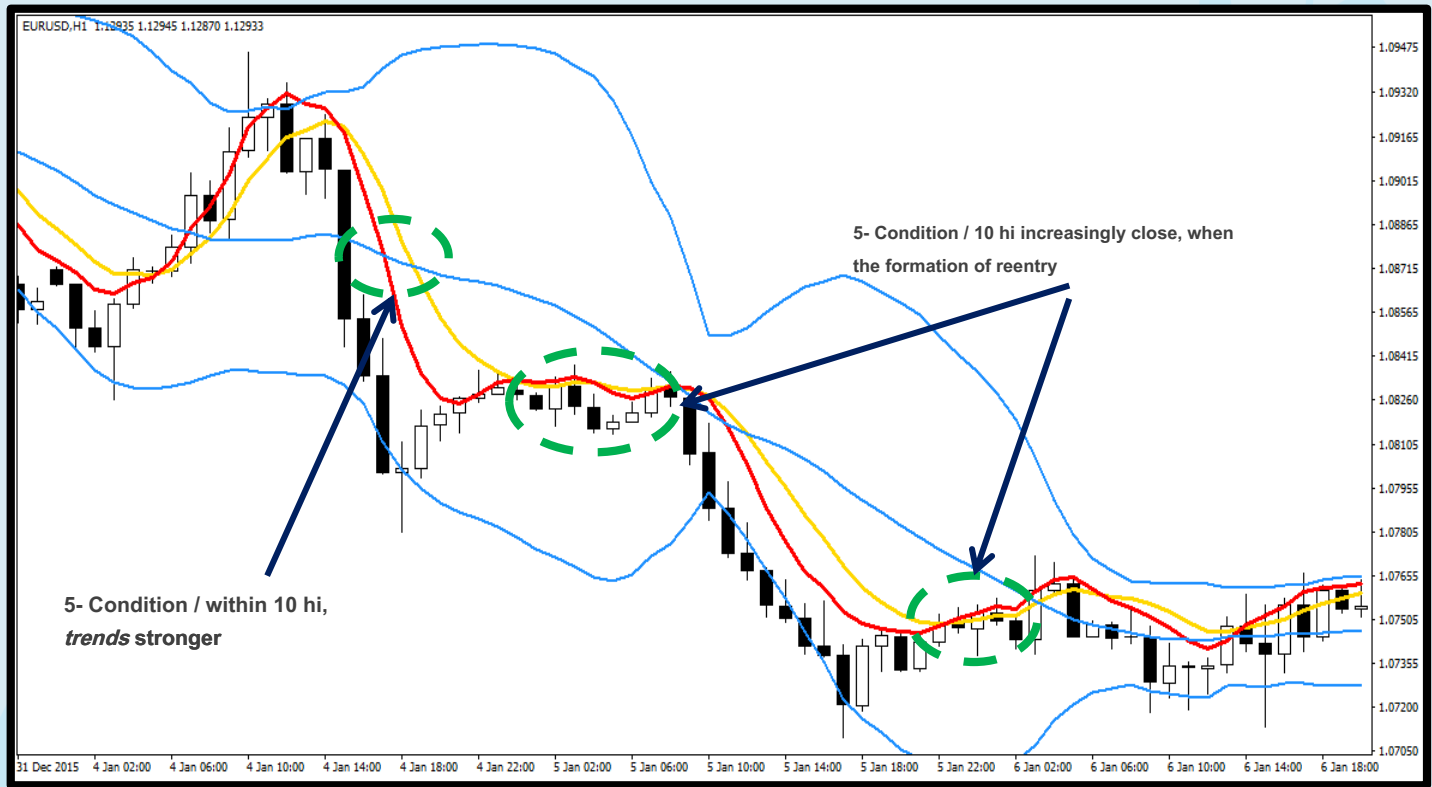
- low body weight
 - As the first signs of decline *market*
 - if *candle close* outside **low body weight** expands , Will give a signal steady decline
 - Same as *top bb*, when *candle close* outside the body will be continued momentum
 - If there is no momentum, *market* will make changes. power *market* if there is no *candle* not surpassed *low bb*
- Mid bb
 - As the liner: -
 - Separating the increase to a decrease
 - From the drop to rise

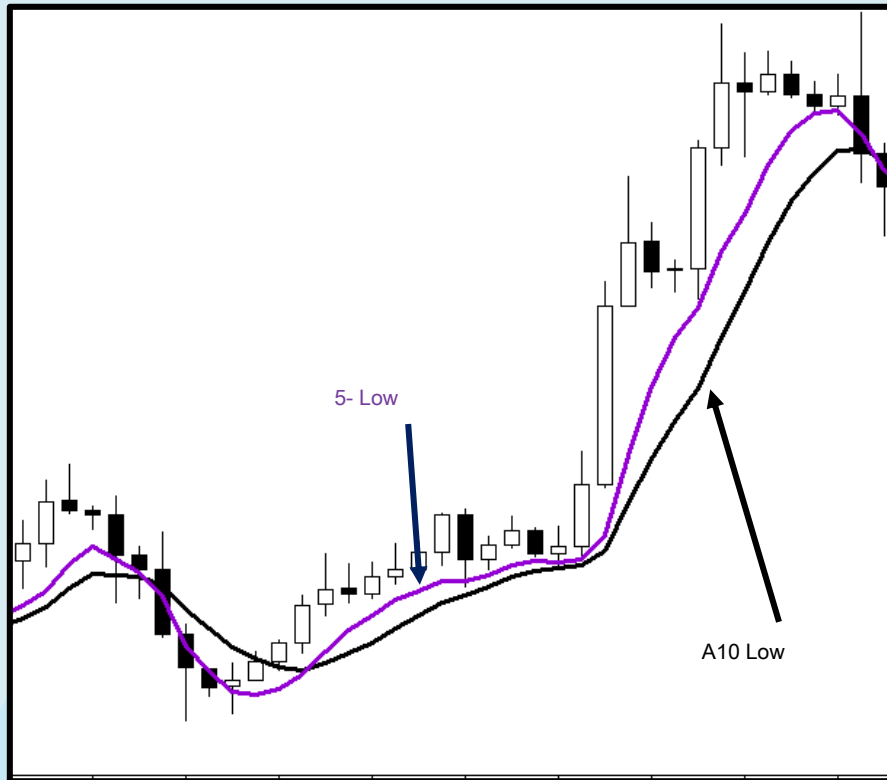


MOVING AVERAGE (MA)

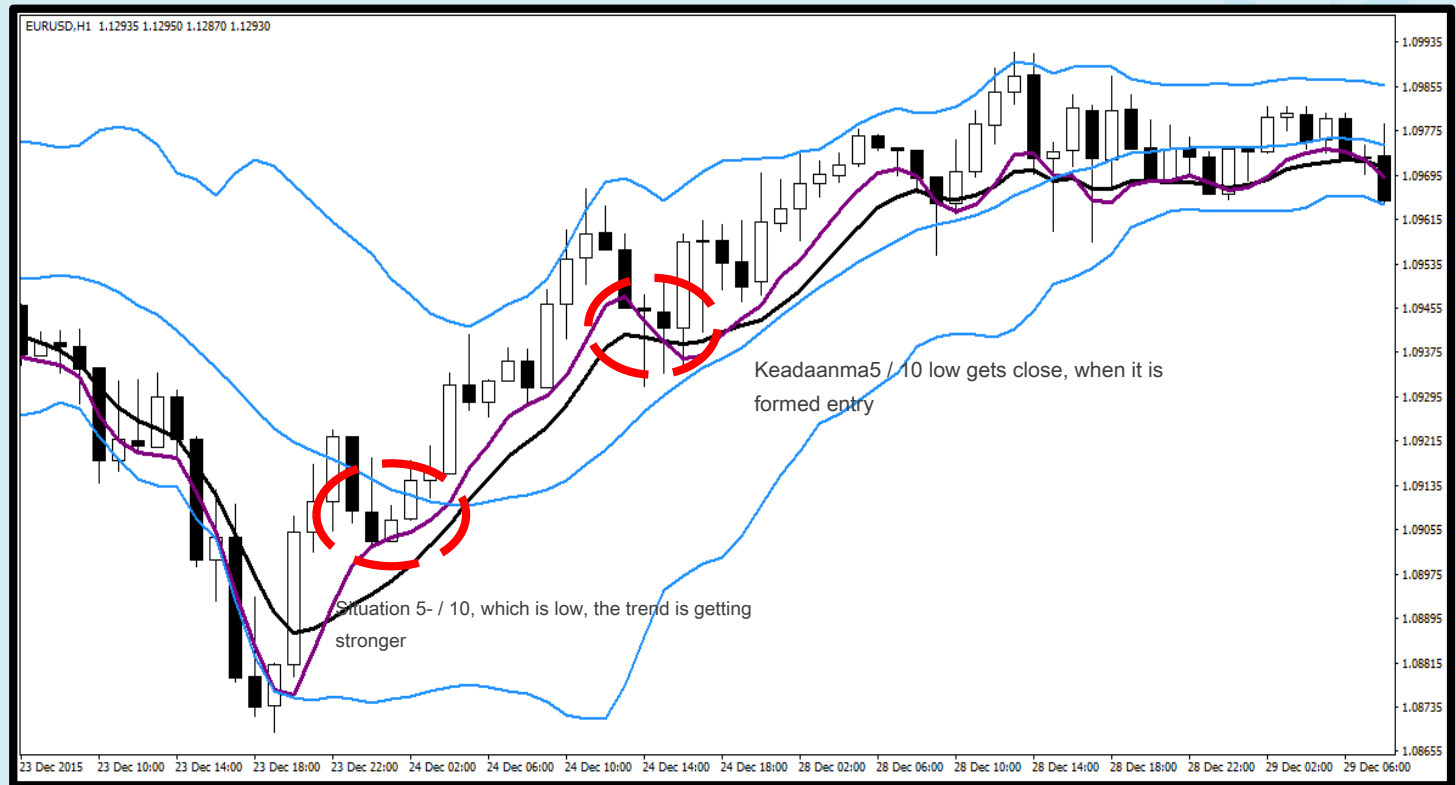
- **MA 5 Hi**
 - *as sell entry point - sell when trends decline*
 - *Detect extreme - Ma 5 Exit top bb*
- **MA 10 Hi**
 - *Strengthening entry when setup reentry*





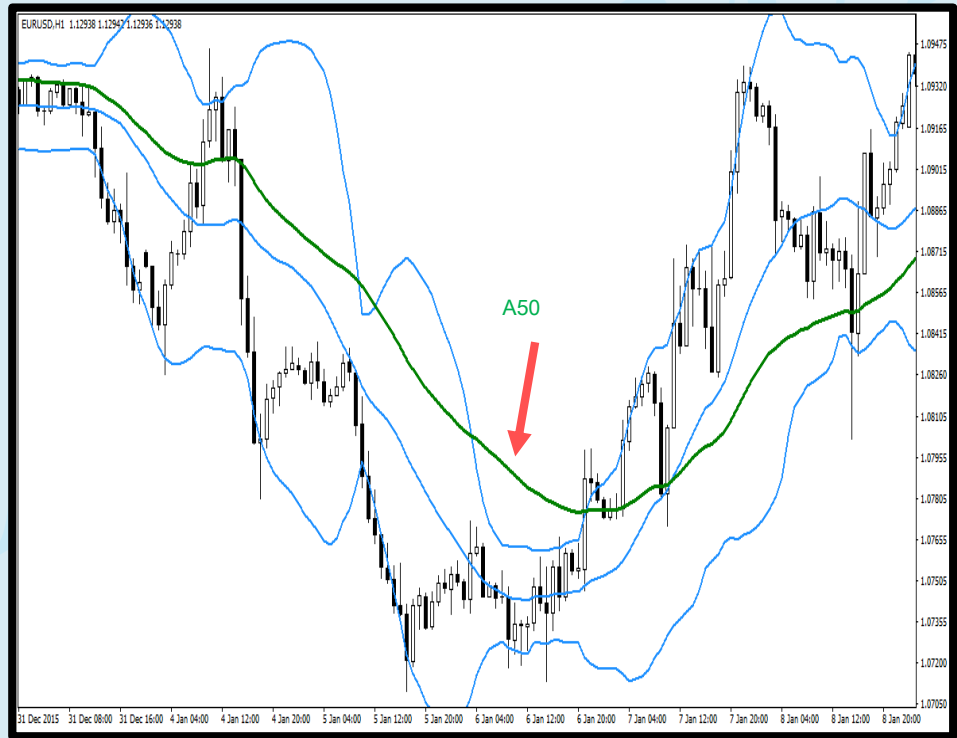


- **MA 5 Low**
 - as *buy entry point* -
buy when trends upward
 - Detect *extreme* - 5- exit *low bb*
- **MA 10 Low**
 - strengthen *entry* when
reentry setup



MOVING AVERAGE 50 (MA 50)

- As the current movement *trends*
TF direction in each small
(below H4)
- As Major *trends*
Tf in each of the (*Daily* upward)



BASIC + MA

- **Ma** can not be outside *top / low* bb
 - If out of the body, meaning that it becomes *extrem*
- **cs** can not *close* outside mm
 - if *candle close* outside the body, it will be continued momentum and strength *market* starts

SIGNAL - SETUP - ENTRY

- In the BMA there are 3 things we need to know the difference, namely

- Signal (a sign of the beginning of market-movement)

- Extrem signal
- Directions Candle Strong Signal
- signal Momentum



These three types of signal is not for entry

- Setup (effective after the signal, and it gives us the preparation for entry)

- Missing Market Volume (MHV)
- Re entry

- Entry (For entry buy or sell)

- 5 Ma (Early Entry)
- Ma 10 (Strengthening of entry)
- Body Marking Highest Current (MHV)

EXTREM

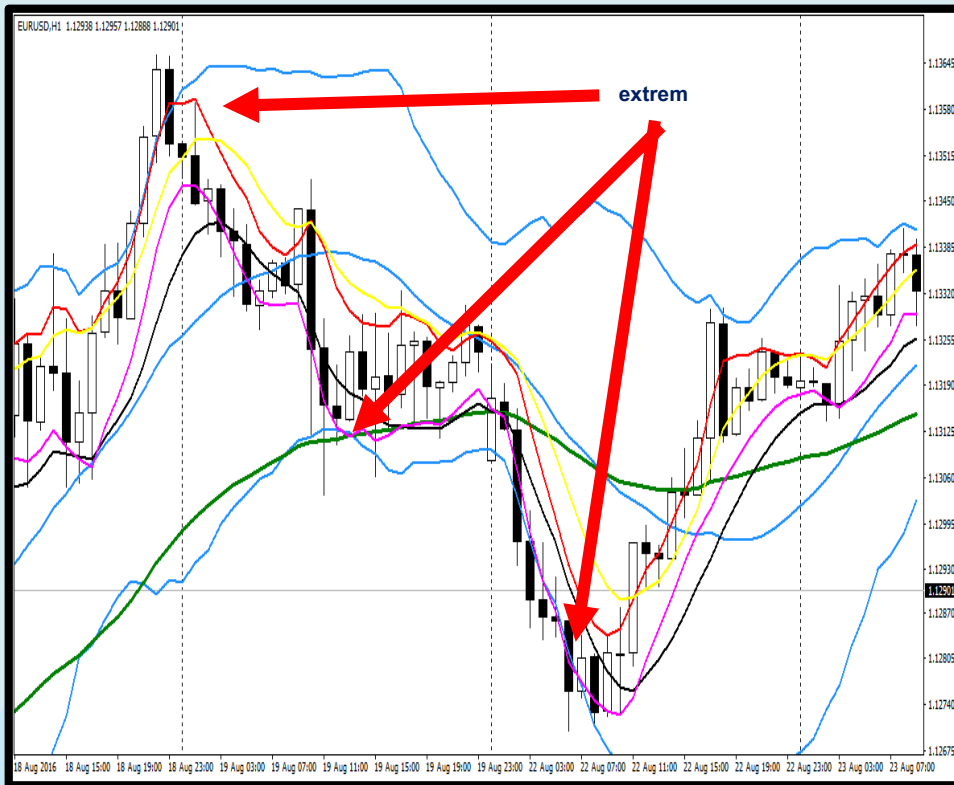
- *Extreme* is **initial signal** to declare the trip **beginning** ends - but **not yet confirm** again. will **confirm** whenever there **reversal candle**
- Extrem is not valid as long as there is momentum, even beyond ma bb

Feature - Feature

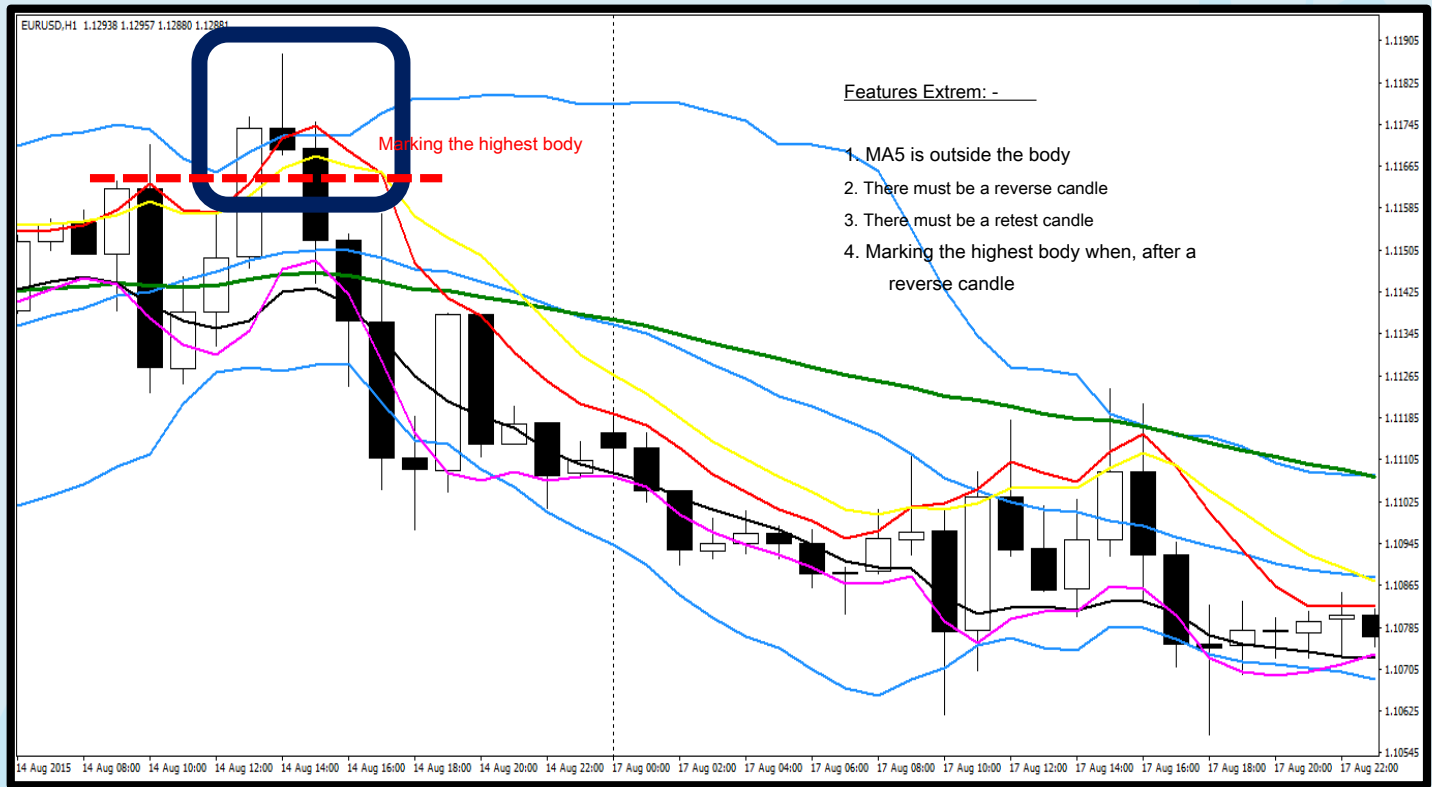
- **Ma exit top / low bb**

(Will not be valid as long as there is momentum, despite being out ma bb)

- **Reverse candle** there must be, because it would signify something *market* it is turned off (not necessarily 1 or 2 cs)
- **Retest candle (entry point)**
 - *entry* The highest or lowest volume
 - *entry* retest candle in MA5 or body candle

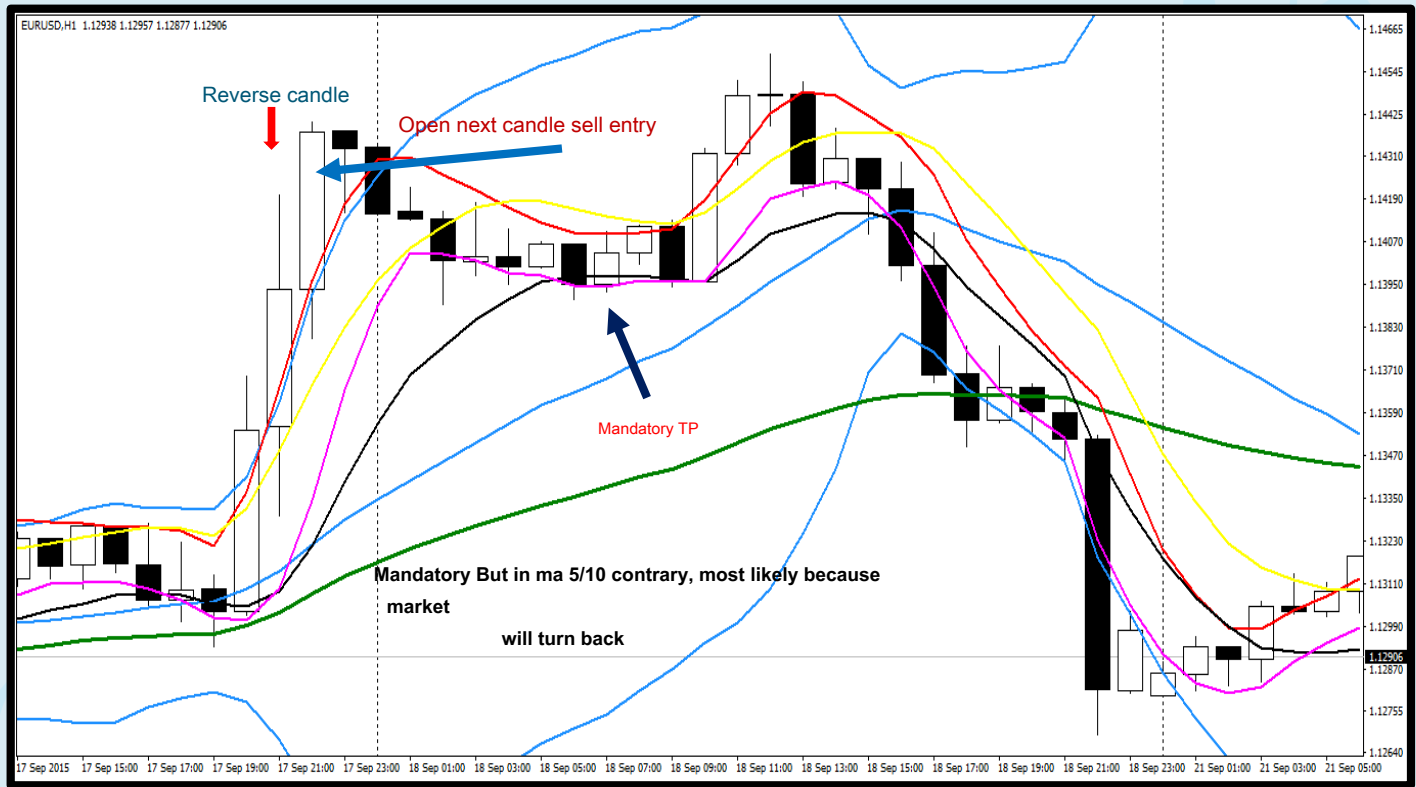


- *extrem* NOT SETUP ,
- **INITIAL SIGNAL**
said the market began to expire



TP MANDATORY

- TP (take profit) on a 5- or A10 to the contrary, example: -
 - *entry sell on extreme sell*, TP on the A10 5- or buy
 - *entry buy on extreme buy*, then TP on a 5- or sell A10
- TP in mid bb
- Mandatory TP in ma 5 or m10 jugak mid bb
- Mandatory but still valid as long as the candle or ma not out of the body



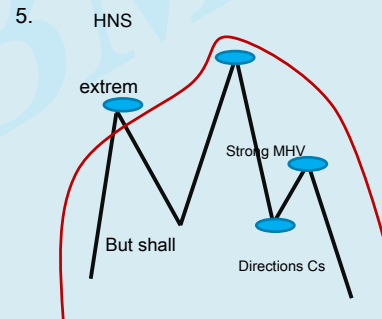
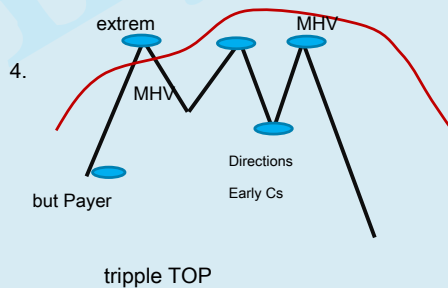
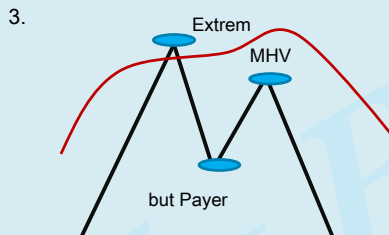
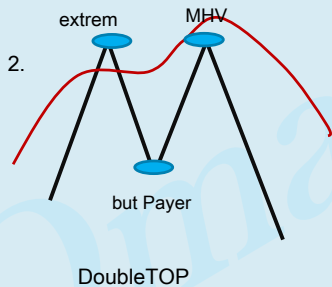
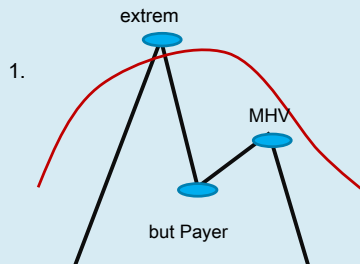
MHV (LOST MARKET VOLUME)

- constitute *setup* early trip *market* long distance
- setup *menvalidkan* extreme
- Showed a loss of market forces. There will be invalid after Mhv direction cs
- Advanced features
 - *Candle close* can not pass *top / low* bb
 - Must have *reverse candle*, because *reverse candle* off course (*marking on body candle*)
 - *Retest candle* (*entry point*) a 5- or volume in the highest / lowest current
 - Must occur after *extreme*

in the event that *candle close* not surpassed *top / low* bb after their *reentry* The first, after mhv there *candlestick* direction, then there will be *reentry* and after *reentry* there is no momentum "MUST TP

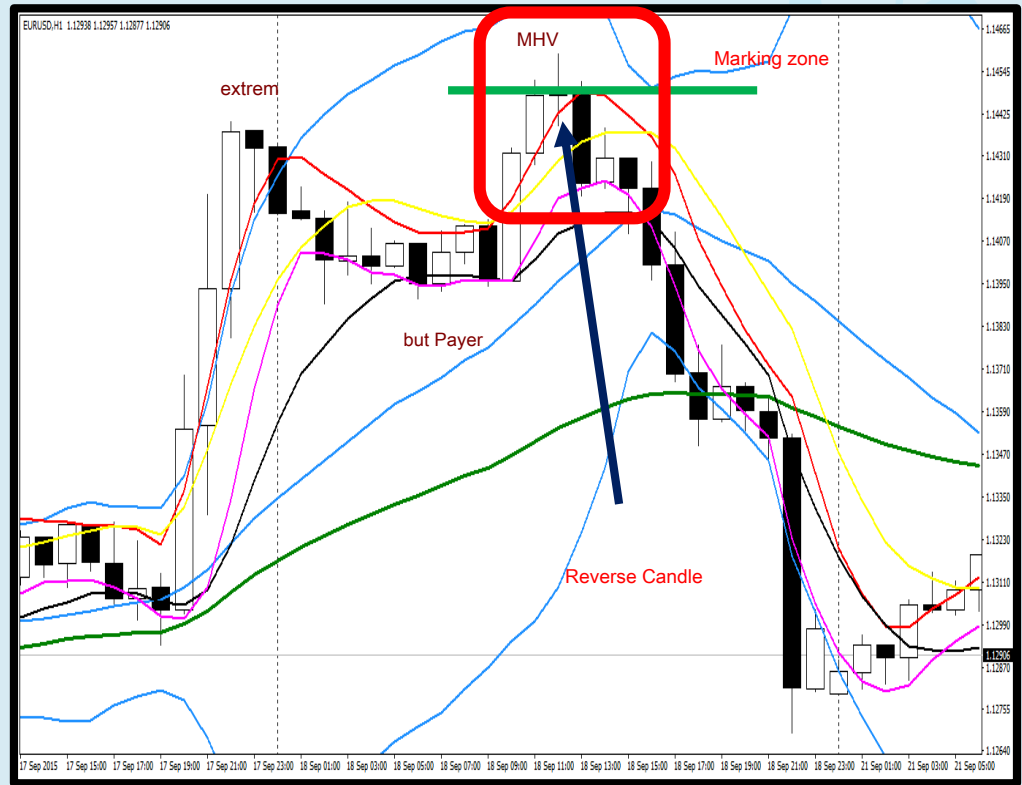
"

TYPES MHV

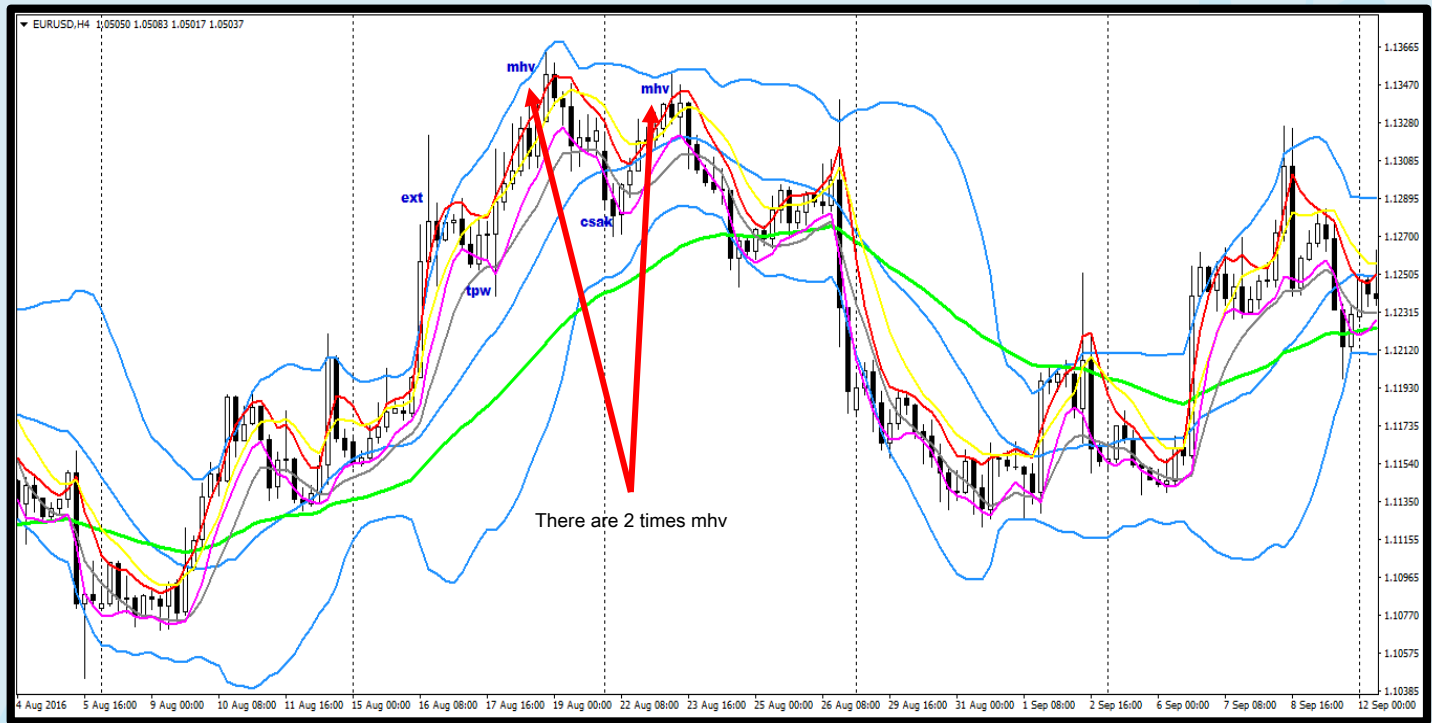


Features MHV: -

1. Candle close not surpassed mm top / low
2. There must be a reverse candle
3. There must be a candle retest (Marking centipede body while following a reversal candle)
4. MHV must occur after extrem







Setup Mhv at times can occur more than once

CSA (Candlestick DIRECTION)

- constitute *Duration* The initial direction of movement changes *market*
- It's not to find *entry*
- Do entry in cs direction, because it is not a setup, it is a signal

1) Directions Cs early

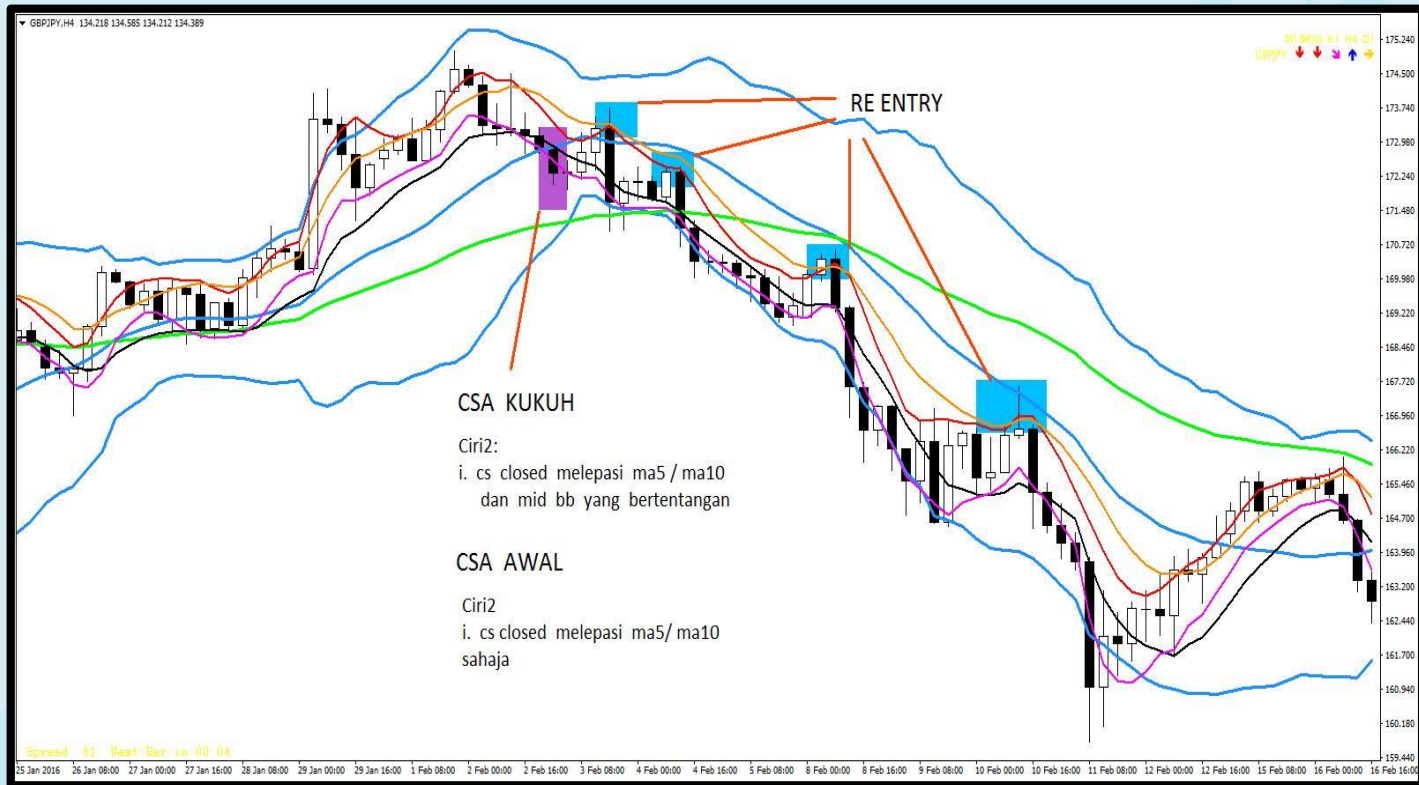
- cs *close* surpassed 5- / A10 only. not passed *mid bb*
- Mhv not necessarily happen once, can occur several times until the occurrence of the strong cs mhv then ended

2) Directions strong Cs

- cs *close* surpassed 5- / A10 and also surpassed mid bb



If there is a strong candle and candle-candle continued with strong direction to the *low mm* and *candle close* not a momentum, there is also no need TP for when there must be a way reentry



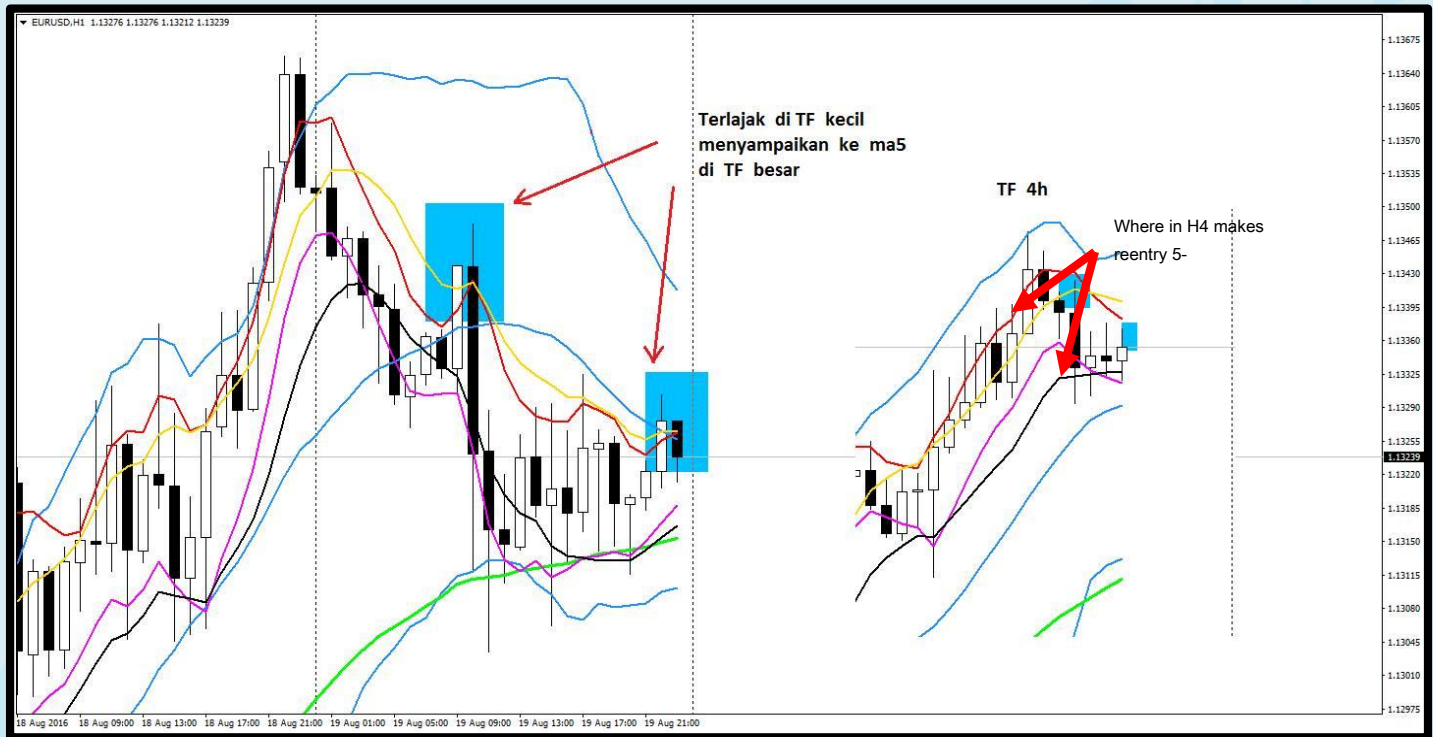
RE ENTRY (SETUP)

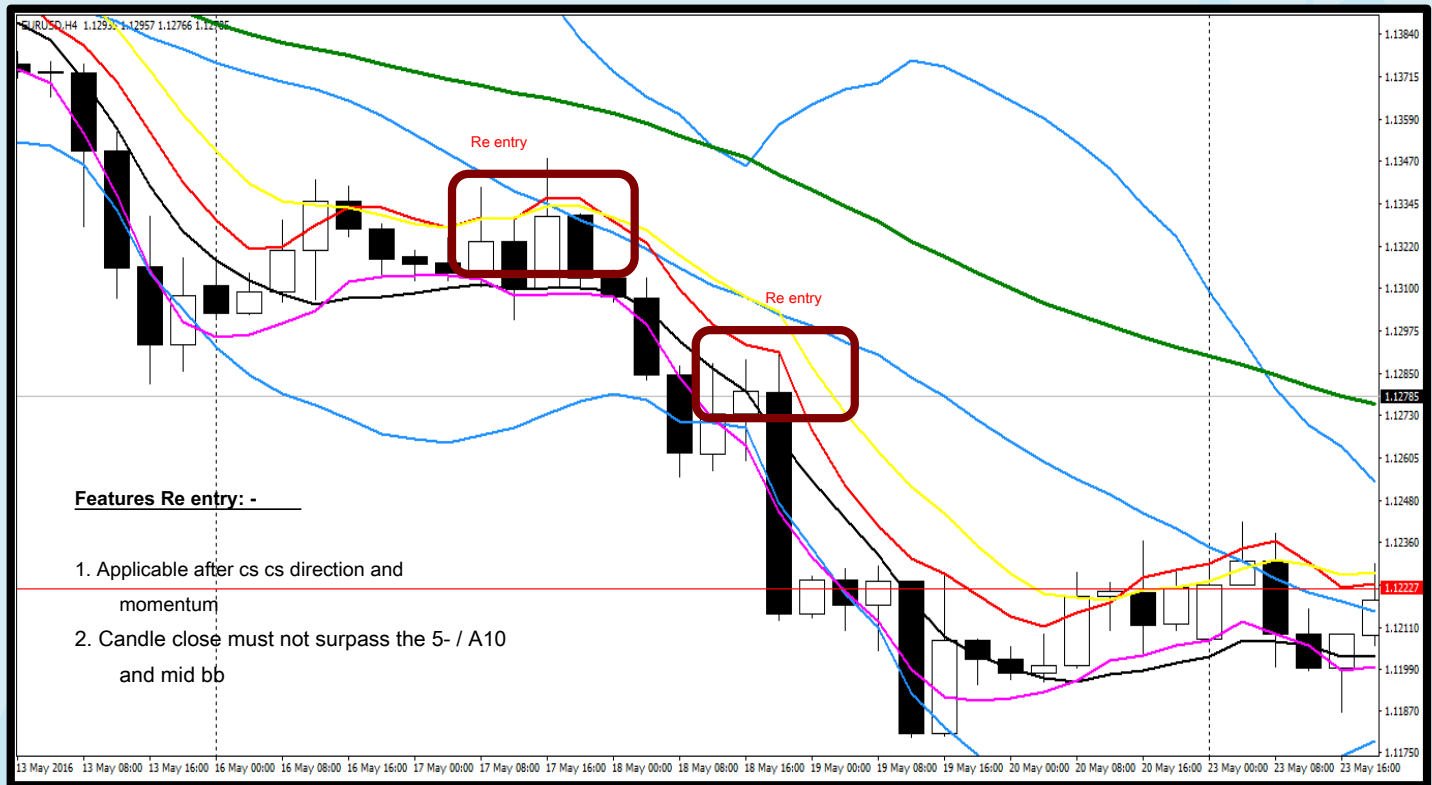
Th level setup is 2

Characteristics -

- *Candle close* can not get past a 5- / A10
- There will be strong when *candle close* not surpassed 5- / A10 and also *Mid BB*
- *Candle close* not exceeding reunited 5- / A10 and *mid mm* at the same time will make *re-entry* stronger
- May occur *re-entry* reunited 5- / A10 and *mid mm*, a minimum of 3 rods *candle* falling or rising (follow Tf) *re-entry* going strong
- Make sure the first direction *market*, after the new look *re-entry* and *entry*
- Wait a second candle, for the first candle and candle validate the second reentry is for entry

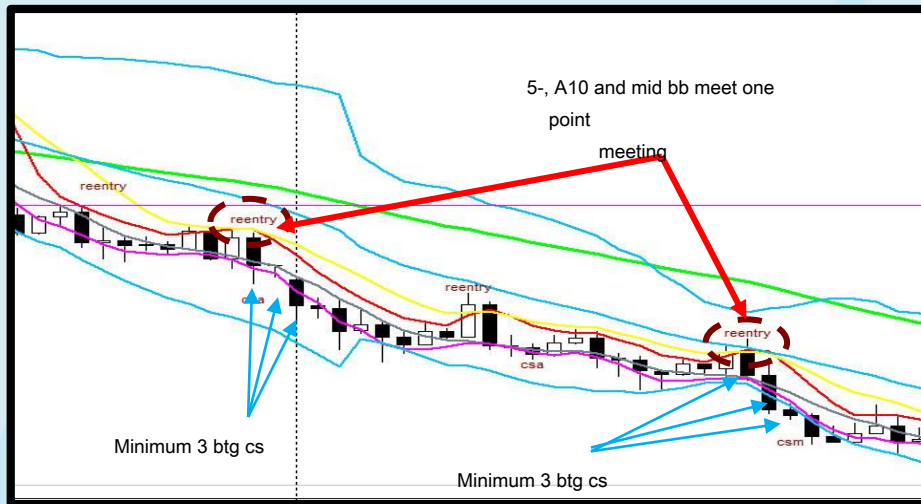
HIDDEN SECRETS





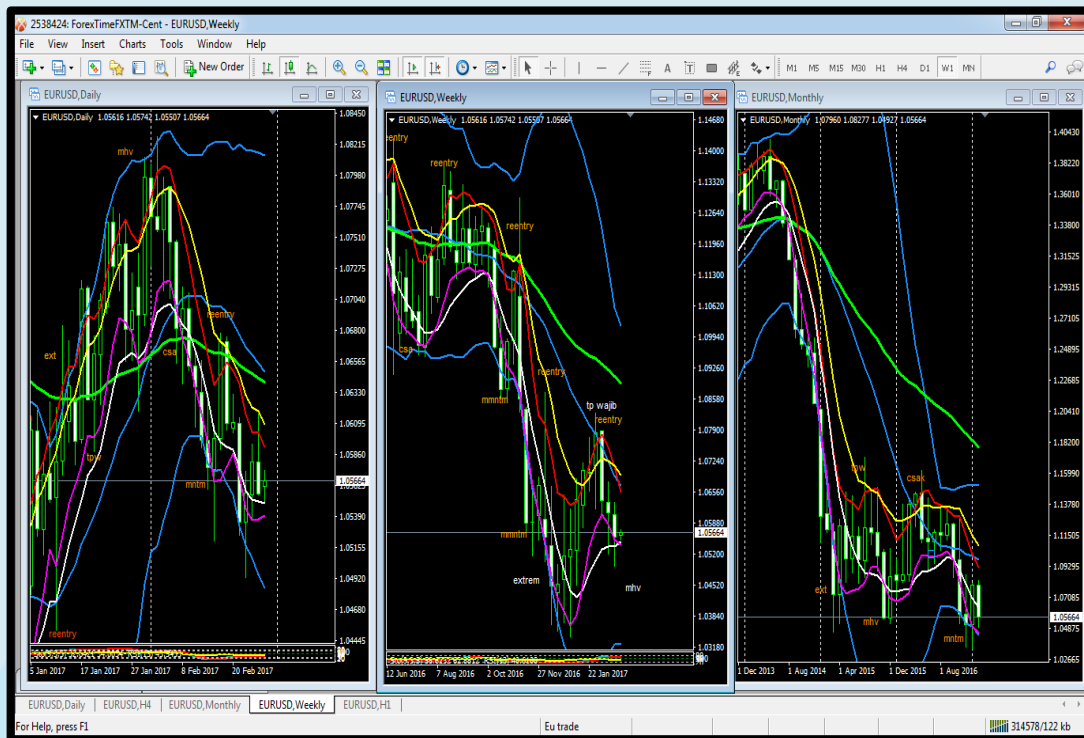
reentry (no matter what type of TF)

- Meetings 5- and A10 as well as mid bb, when reentry setup, there will be a large movement (minimum 3 sticks candle)
- Minimum 3 candle sticks usually occur in small TF (H4, H1, M15), while in the daily, weekly and monthly minimum usually 2 candle sticks.



- If the first candle prick and close body, not beyond a 5- / 10 and mid bb, entry in the second candle
- If A50 is at the meeting point, have the power to go up or down

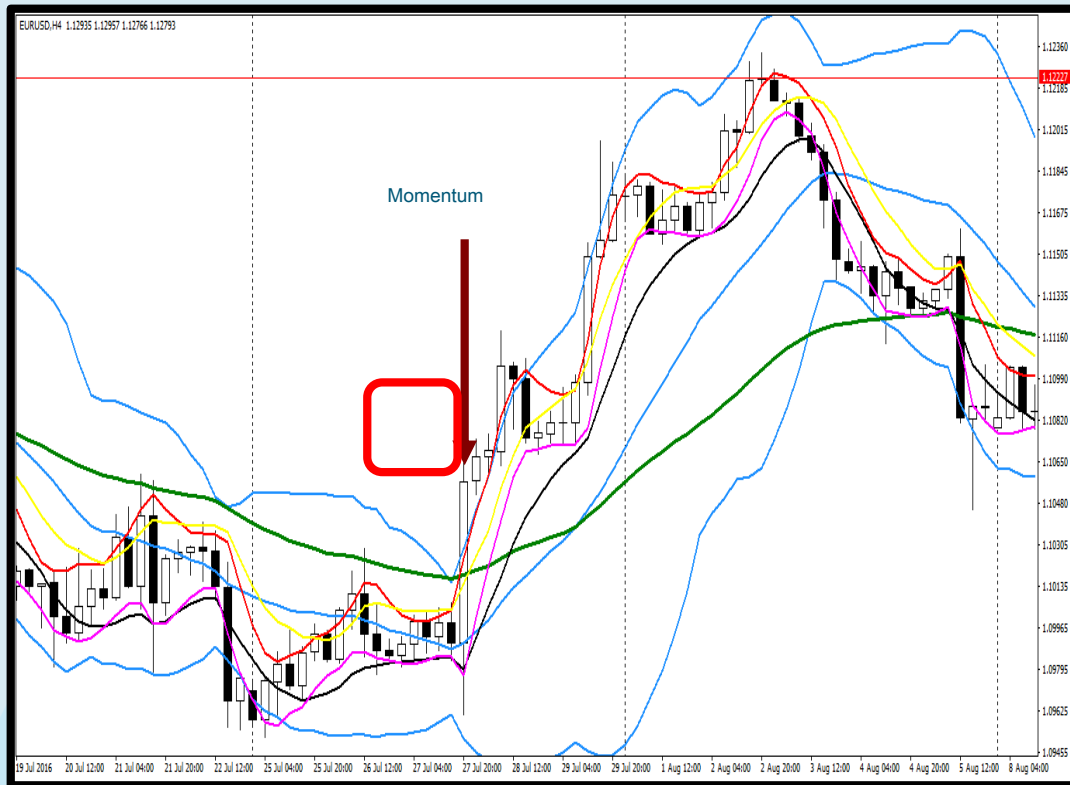
EXAMPLE reentry IN BB, MA5 MA 5 HI AND LOW



1. Make sure Major trends in TF in Monthly, weekly and even daily
2. If the Daily trend is forming up, let the first until exhausted rise on Daily TF. Because the bulls made daily forming setup in weekly and monthly
3. If the major area of TF has to reentry, then look at the small TF entry to setup a small cut loss or SL

MOMENTUM

- Is *Duration* strength *market* starts
- *Candle* must close external *top* / *low* *bb*
- *reentry* momentum in 5- / A10
- *Trends* will be stronger if there is momentum for *candle* has passed a 5- / A10, *mid* *bb* and also *ema50*
- If the *cs* direction and *reentry*, no momentum or top low body weight, chances are the market will do the round up to 100%
- Market will create a new setup before falling or rising again



• *Candle that out of top*

or low bb, signaling continued momentum strength

CHART BMA

3. MHV

(Setup initial market long-distance travel)

- Cs close got past the top / low weight
- There is a reverse candle
- **There retest candle (entry point)**
- Must occur prior extrem

1. Extrem

(Early signal market is ending)

- MA must out of BB
- Must have a reverse candle
- **Wait for retest candle (entry point)**

2. Mandatory TP

- 5- / MA10 conflicting @ mid bb

4. Cs Directions

(Signal the start of the new journey, not a setup)

- Towards the beginning of the past 5- / A10
- Directions strong surpassed 5- / A10 and mid bb

5. Re-entry

- Candle close last x 5- / A10
- Strong candle close if not surpassed 5- / A10 and mid bb

7. Re-entry (momentum)

- Entry in the 5- / A10

6. Momentum

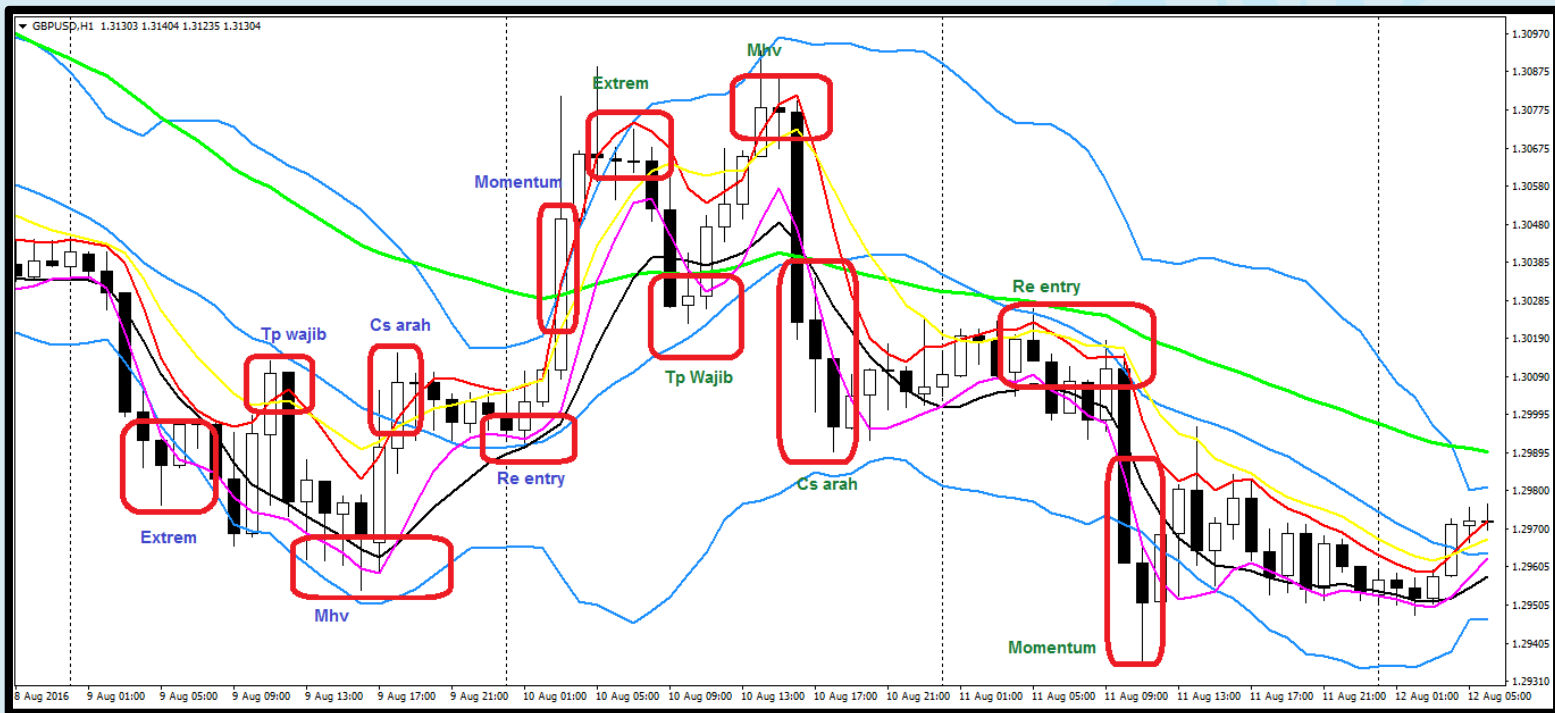
(Signal power market starts)

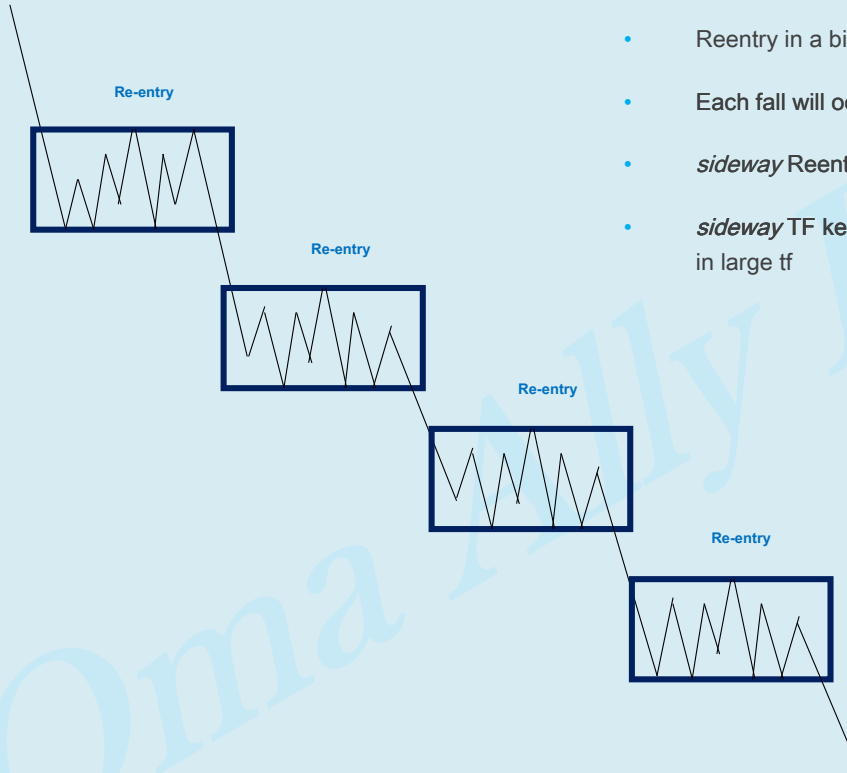
- Candle close outside body

extrem

- Ma must be outside the body
- There is a reverse candle
- Retest candle

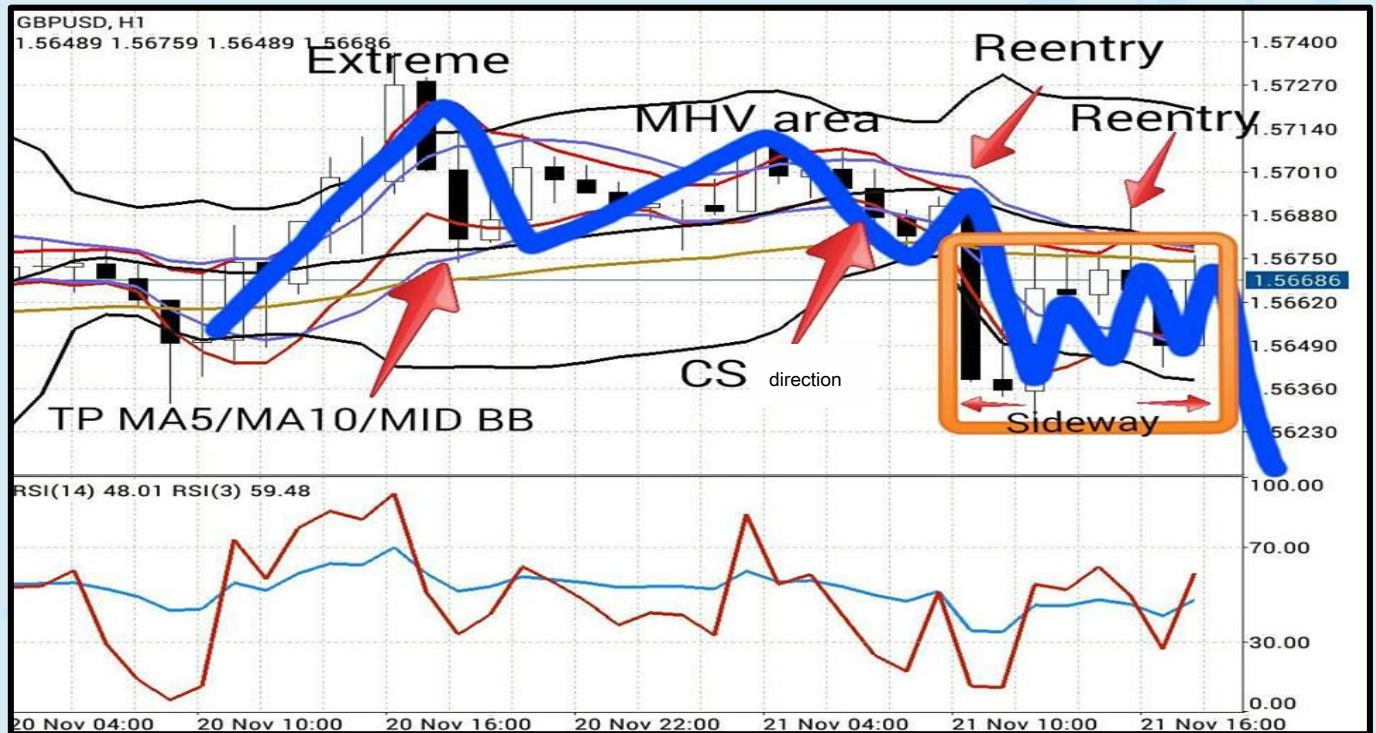
SETUP COMPLETE BMA





- Reentry in a big tf TF is a complete setup in kecil
- Each fall will occur *sideway*
- *sideway* Reentry in great shape TF
- *sideway* TF kecil long, forming *setup* in large tf

SEQUENCE SETUP BMA



EXTREM

- Extrem 4 form

1. *extrem* bb mentadar

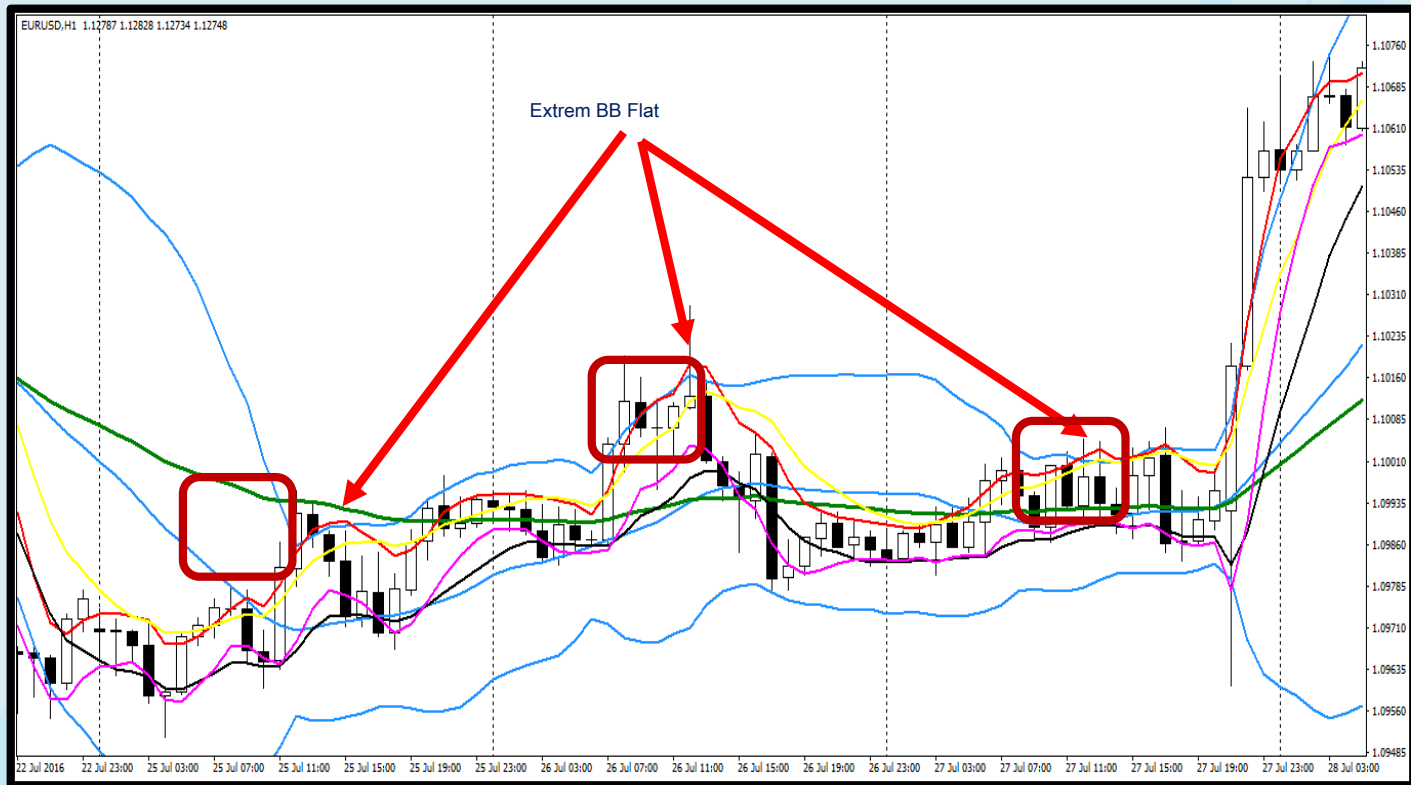
2. *extrem* BB which expands

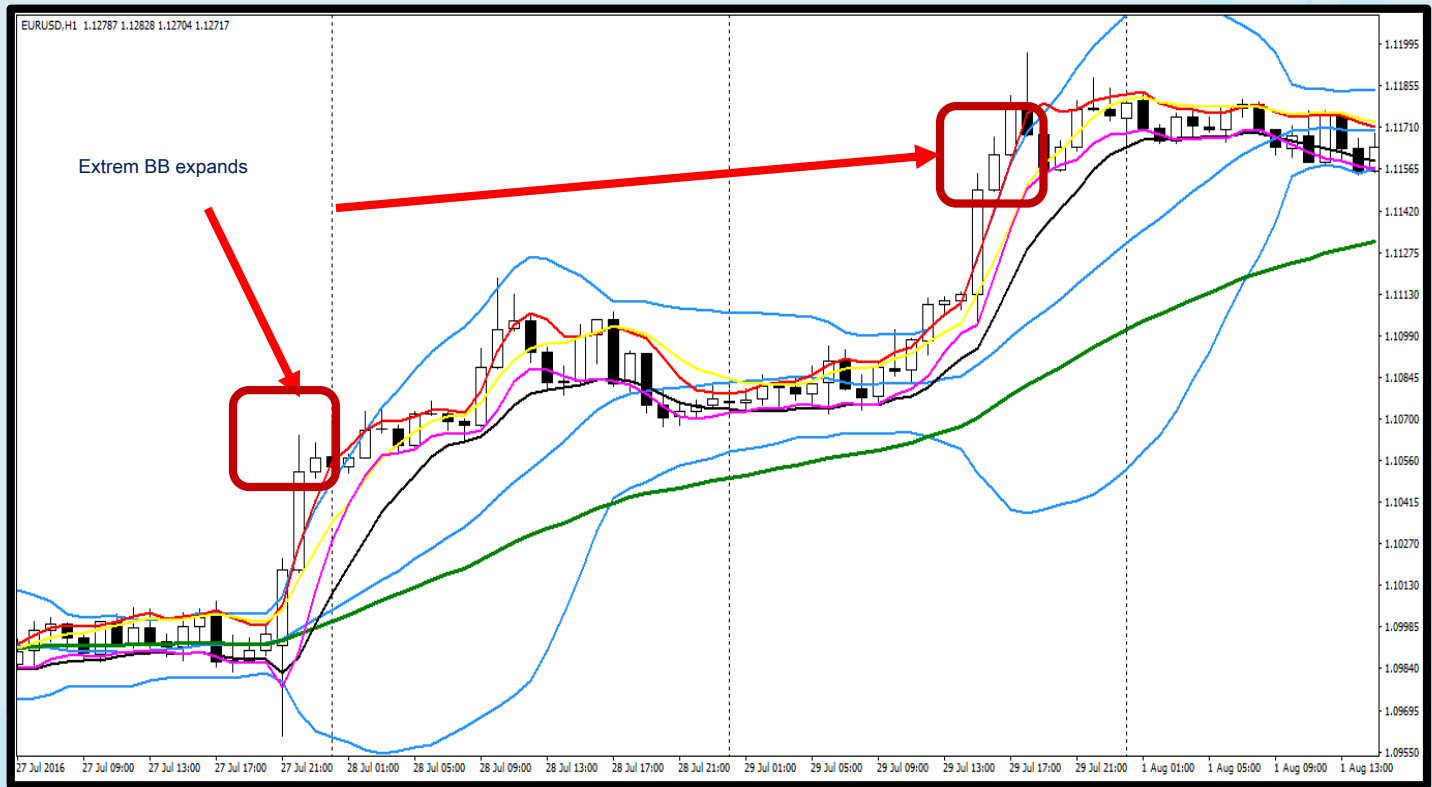
3. *extrem* that there is momentum

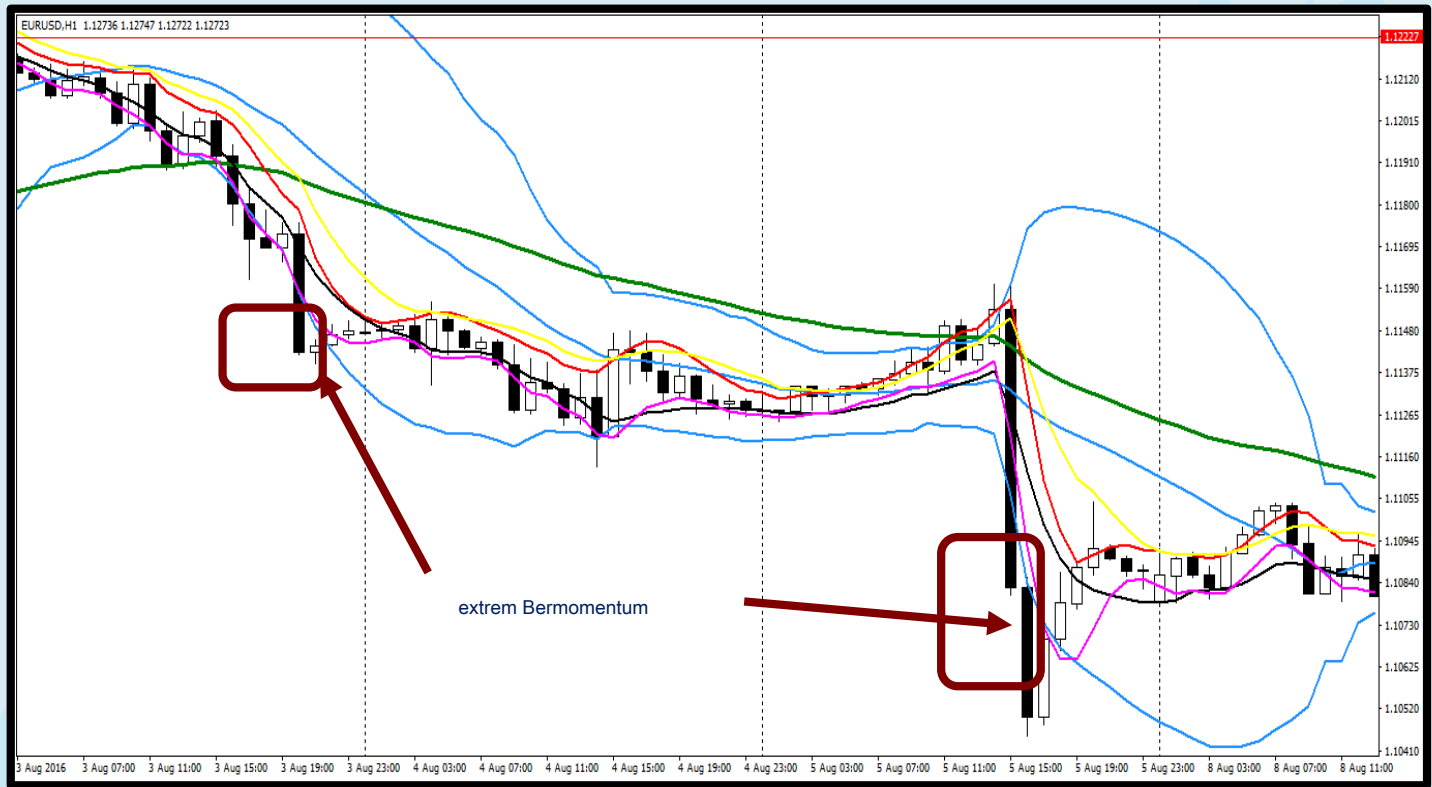
4. *extrem* that there is no momentum

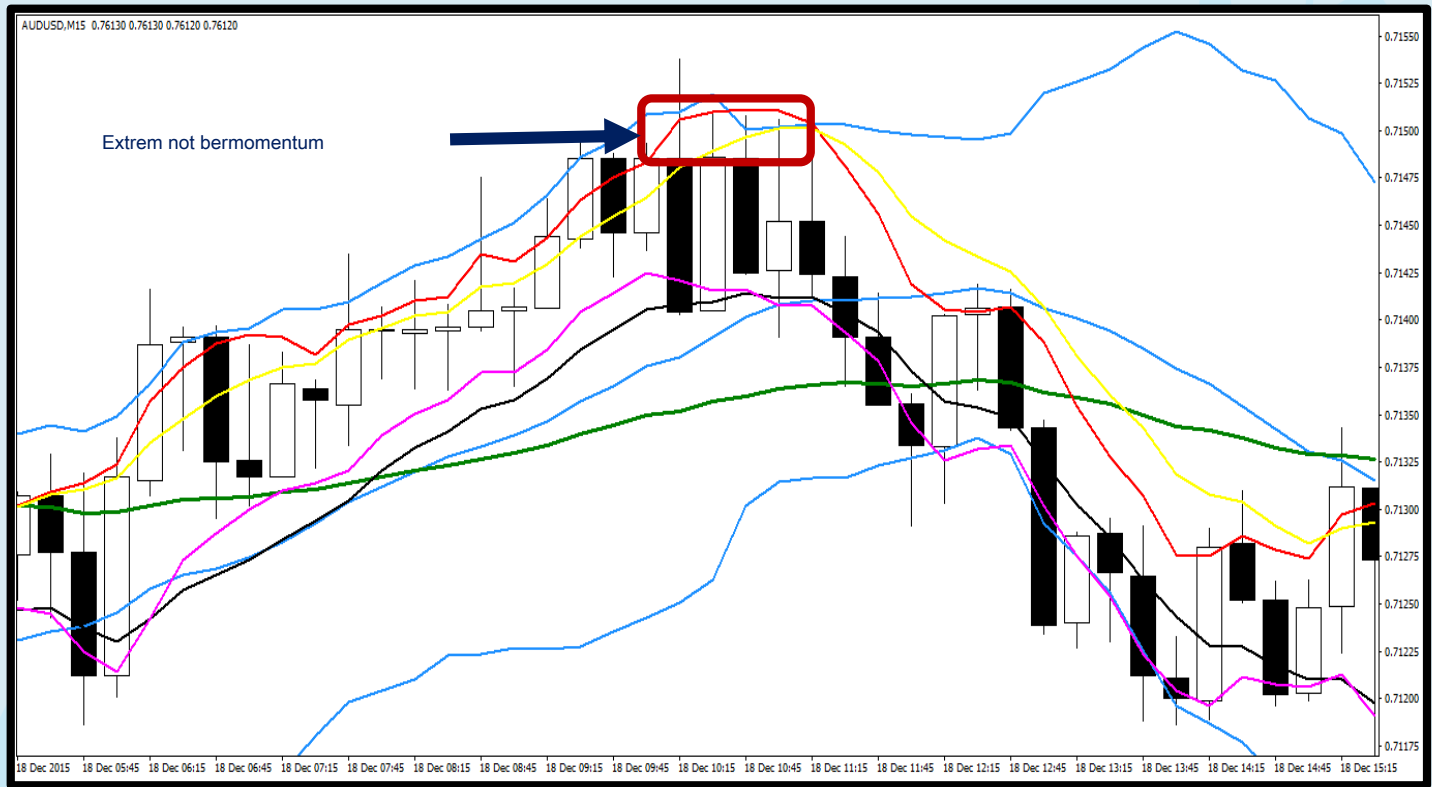
1) extrem

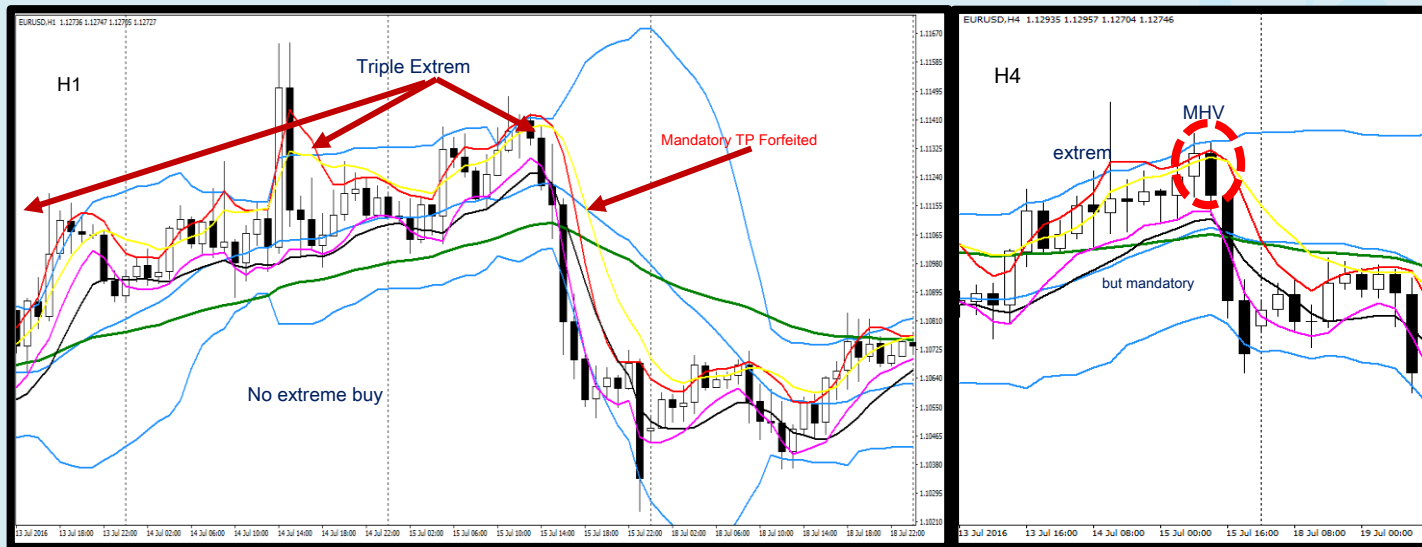
- o Continuous - Where there are 2 or 3 *extreme* without reverb *extreme* (means not there is *extreme* to the contrary)
- o *extrem* The second failing extreme but must wait three
- o or third there should be no mandatory TP and no where MHV trip *market* in continues as the TF of the applicable mhv or reentry
- o Example: - Tf H1 occurs 3 times *extreme* forming MHV or *reentry* in Tf is greater (H4)
- o Reason: - Tf great effect complete setup mhv or reentry



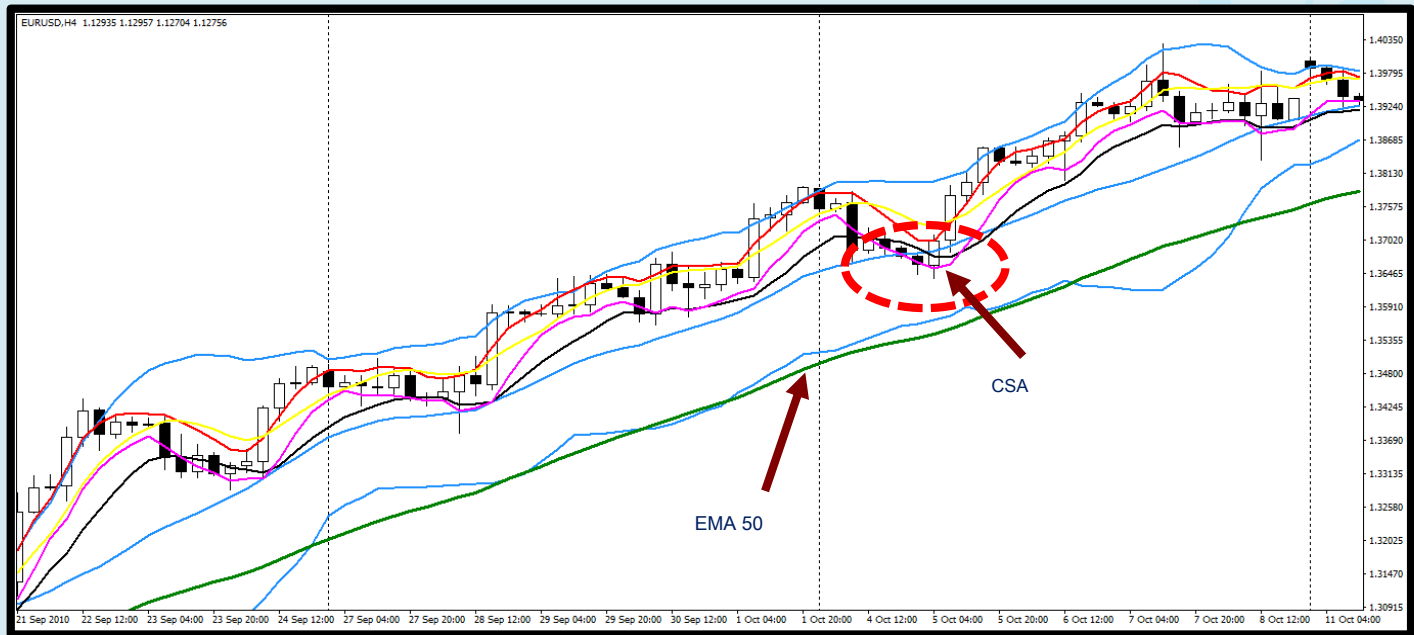








- If there is any *triple* extrem, no extreme opposite in TF small, usually in large tf setup there MHV
- But there should be no compulsory
- There should be no MHV



- *Market am by major trends increase*
- if there *candle* sell off towards the buy, then *cs* This direction is not *invalid* as against *trends*

ZONE ZERO LOSS

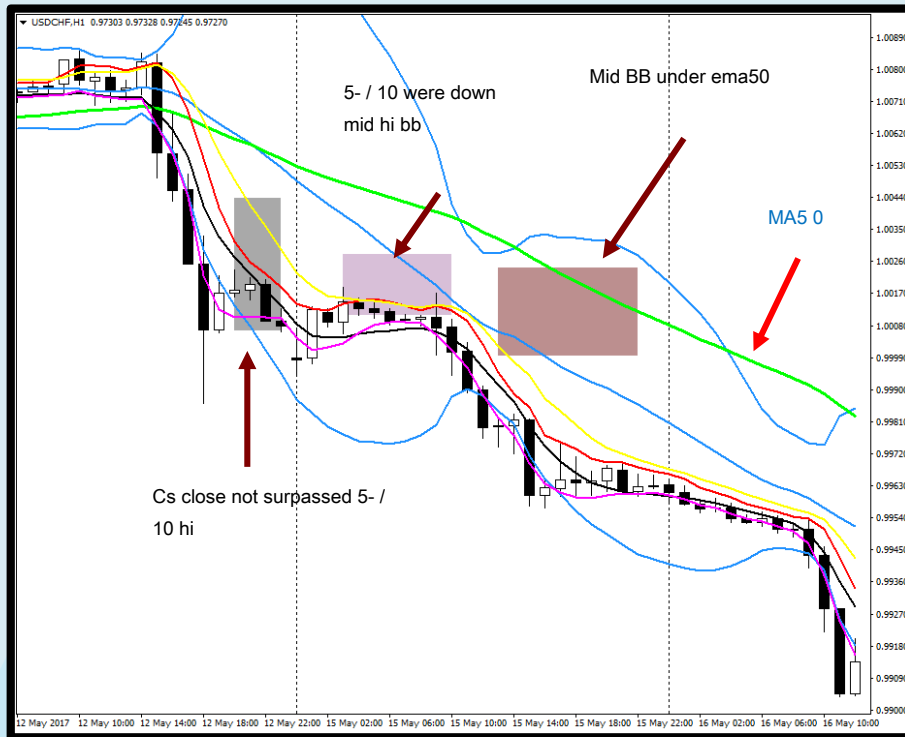
ZONE ZERO LOSS (ALL TF)

- For reentry setup only, which occurred cs strong direction either buy or sell. If cs strong direction is formed, and all passed ema50, entry in reentry
- Mid bb, ma 5 and the A10 and A50 candle must pass



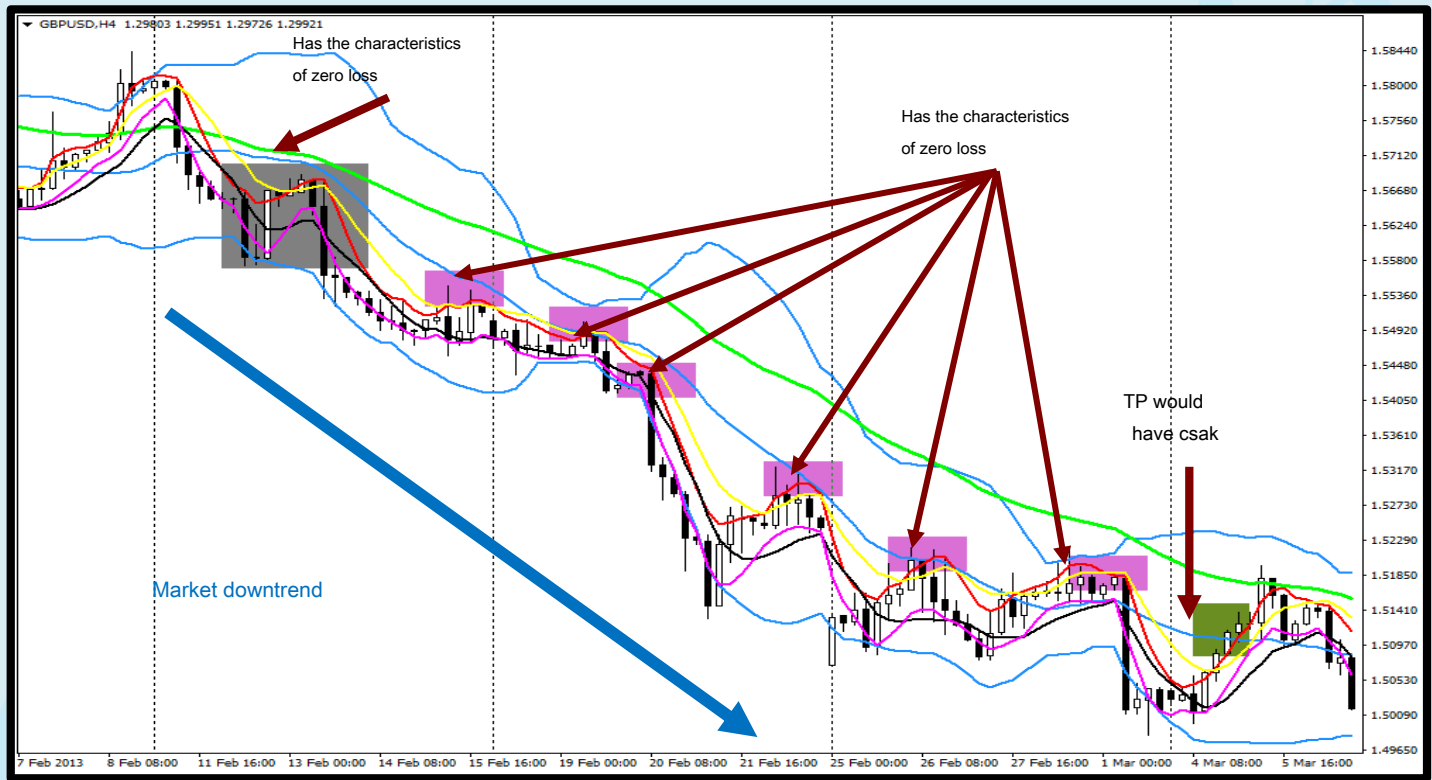
- TP if there cs strong against the trend
- Entry in reentry exactly konfem
- View on TF 1, but can be applied dimanamana TF

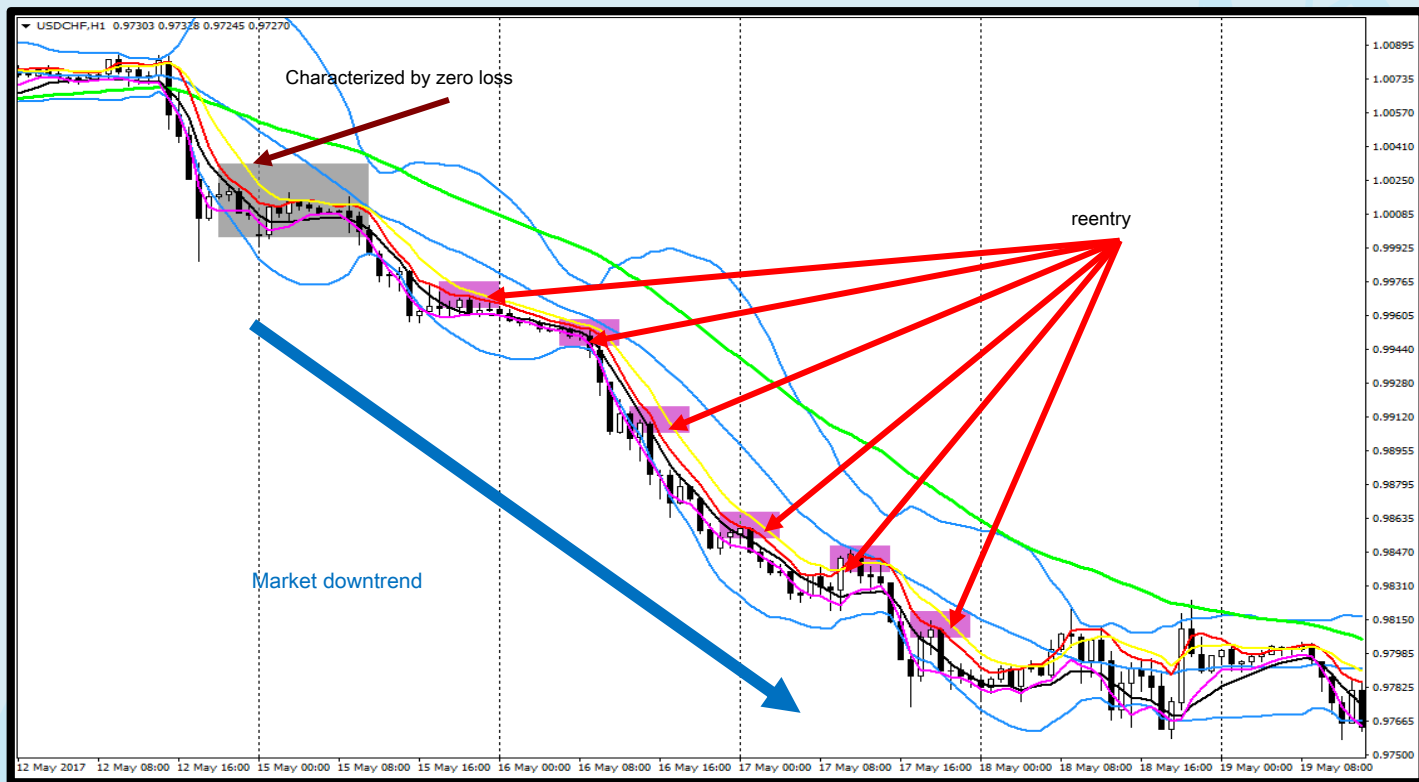
FEATURES ZERO LOSS

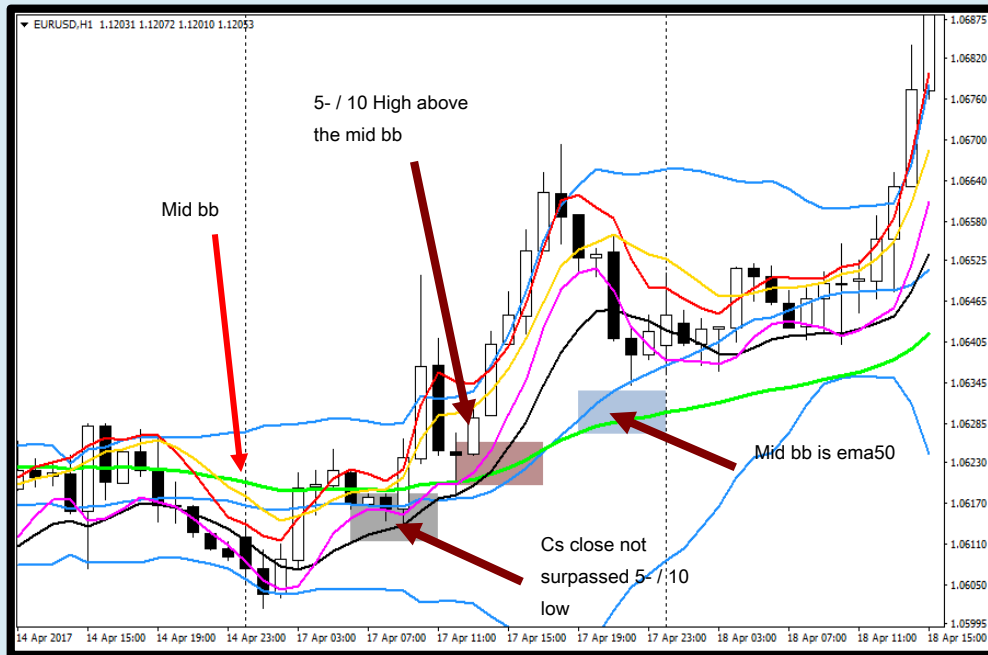


Sell setup

- To setup reentry **sell** only
- Cs must close below the 5- da hi and did not pass the A10 and A10 hi 5-
- Ma 5 and A10 must be hi **below** mid bb
- Mid bb must be **below** ema50 when the market downtrend.



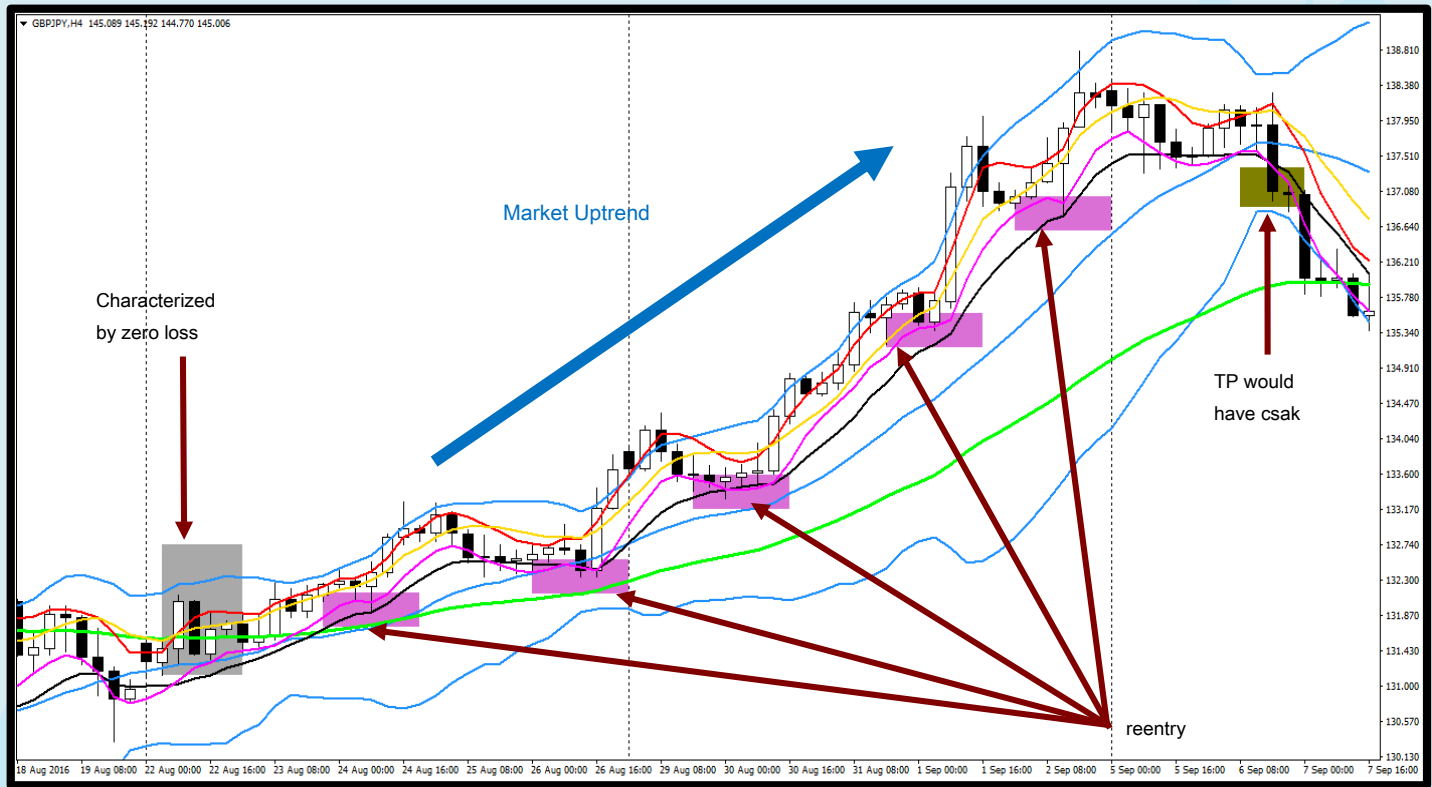


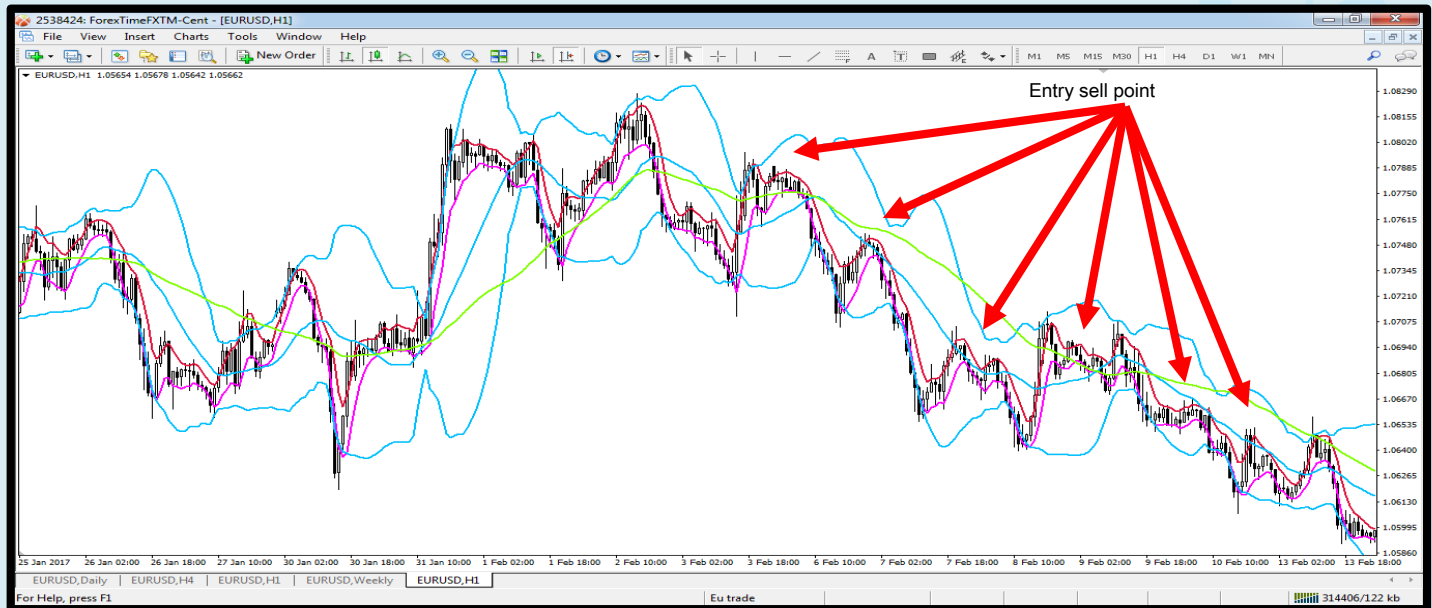


Buy setup

- To setup reentry **buy** only
- Cs must close above the 5- and too low A10 and A10 did not pass the low 5-
- Ma 5 and A10 must be low **on top** mid bb
- Mid bb must be **on top** ema50 when the uptrend

Zone zero this loss can be applied in all TF according to the characteristics





1. In H1..boleh just use dd, a 5- hi and low. But it should be ascertained before major trends
2. After receiving confirmation csa strong entry in reentry. Ideally, the market would follow in h4 (for scalping h4 below)
3. If there is a buy setup, setup wait to sell

MULTI TIME FRAME

TRAVEL CANDLE

In 1 cs on large TF, TF are traveling on a small setup. It should be seen in the small TF that has a lot to travel setup cs

- **1 cs Monthly** There are 4 cs = **Weekly** (there jugak month there are 5 bars cs)

Daily There are 20 cs

H4 There are 120 cs

- **1 cs Weekly** = **Daily** There are 5 cs

H4 There are 30 cs

- **1 cs Daily** = **H4** There are 6 cs

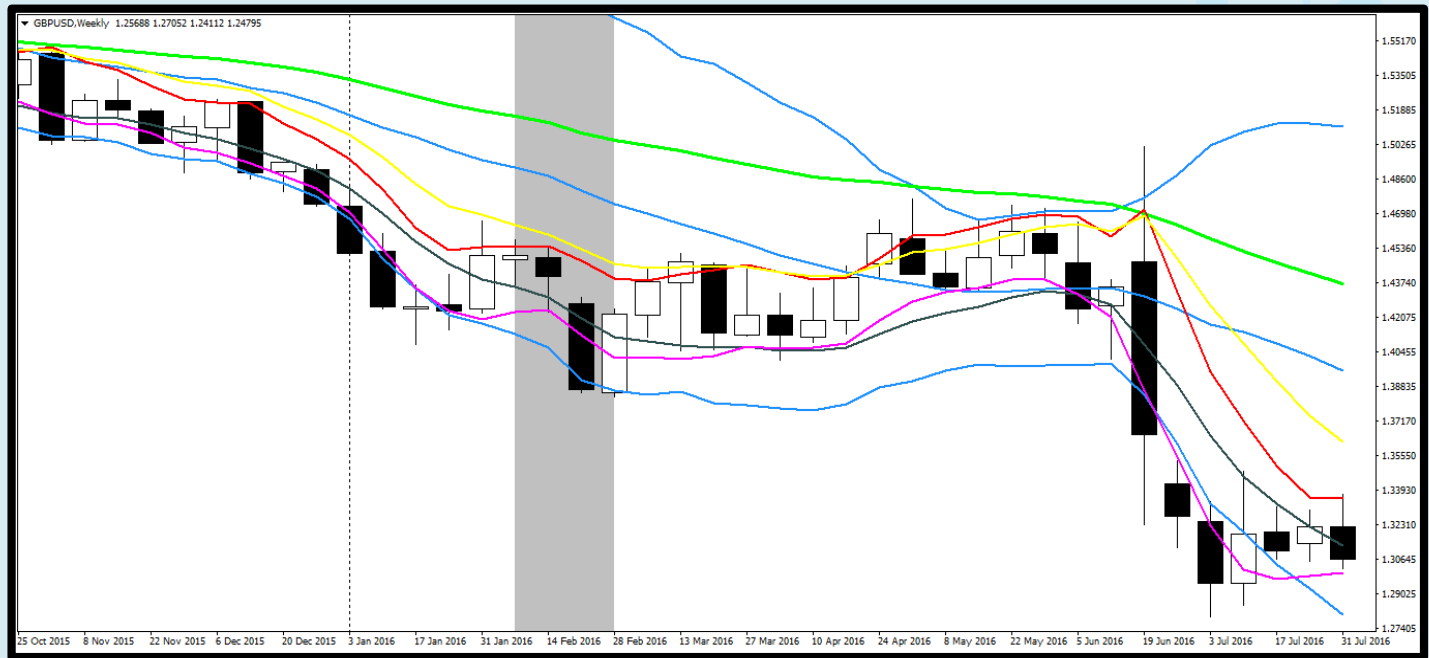
H1 There are 24 cs

M15 There are 96 cs

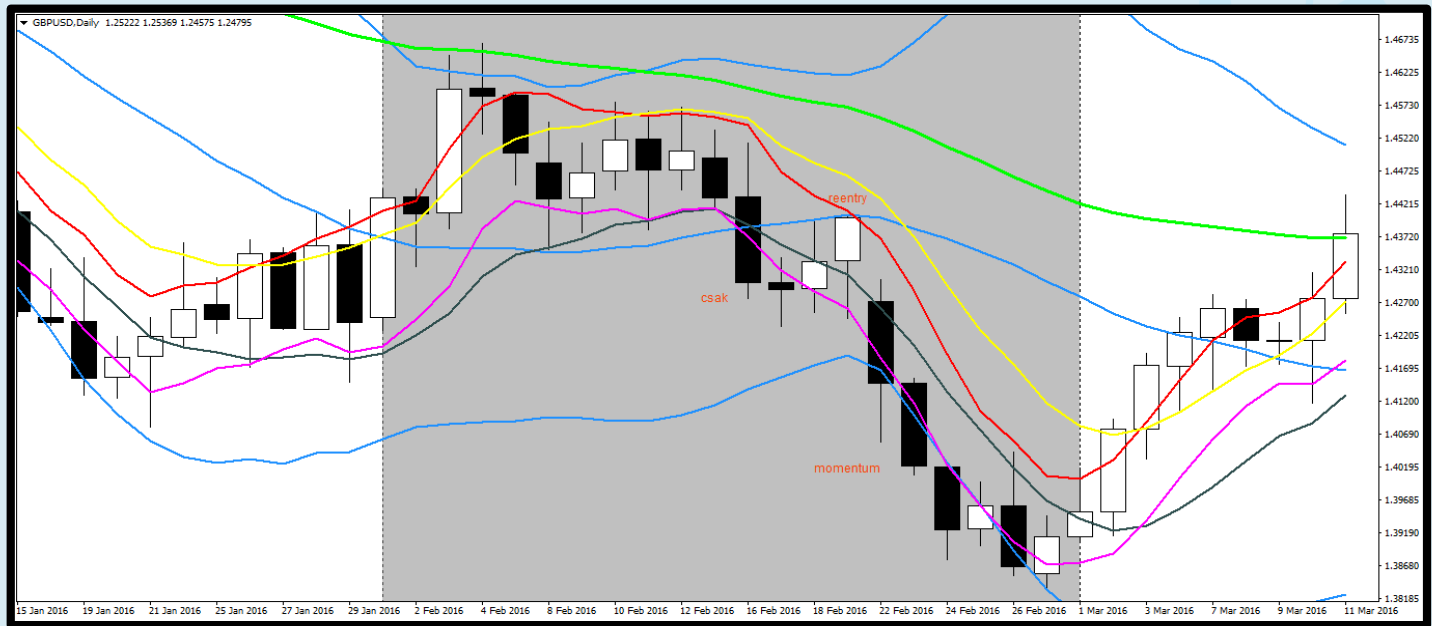
TF TRAVEL SMALL CANDLE IN MONTHLY



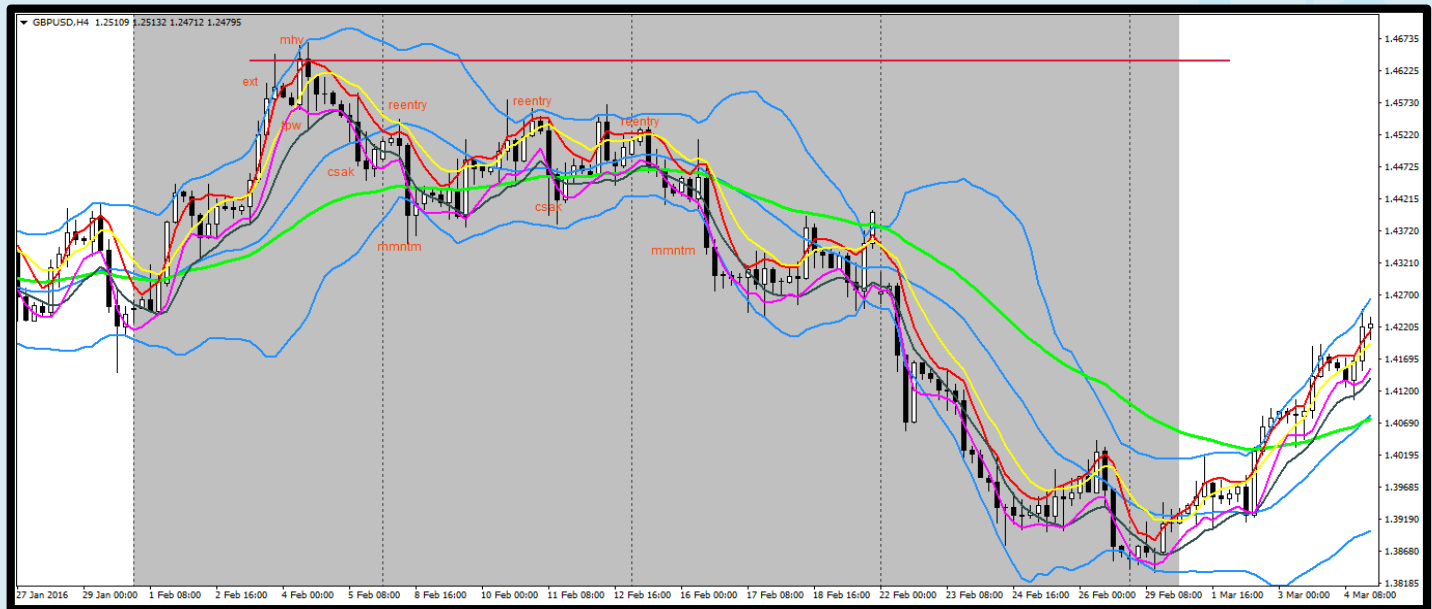
- 1 cs monthly
- setup momentum



- In the weekly, only 4 in 1 travel cs cs monthly
- The trip did not change the setup

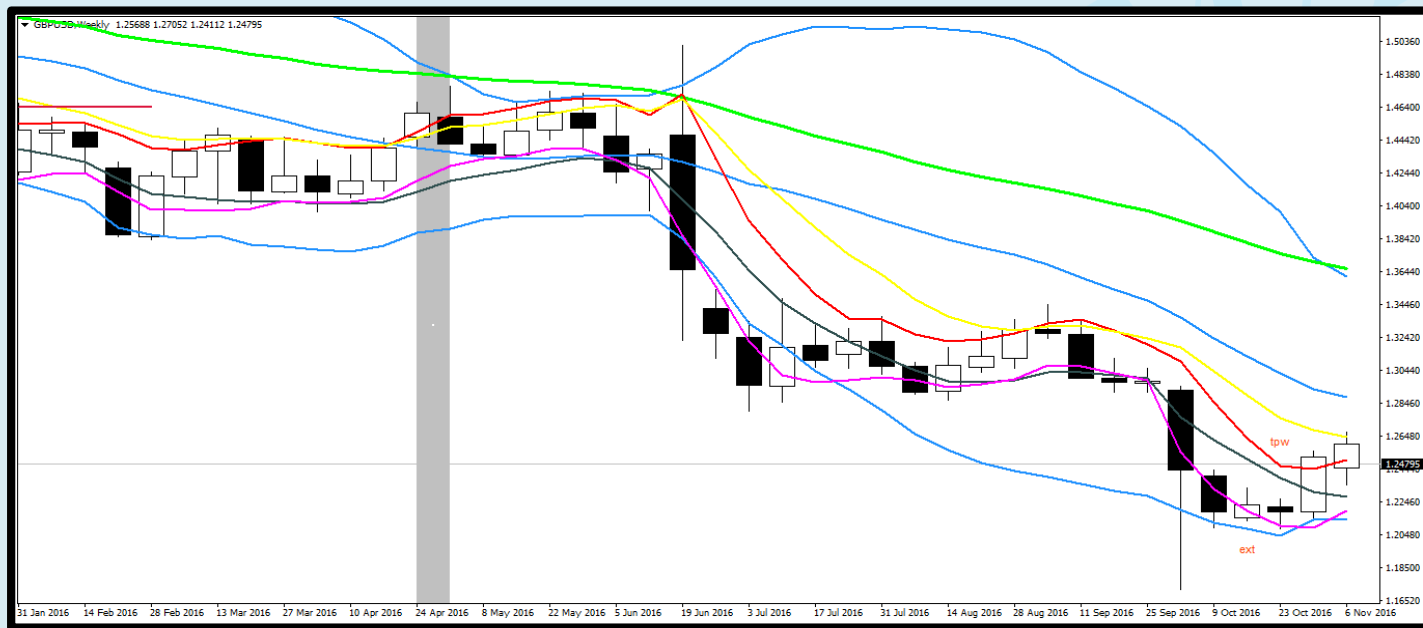


- The Daily TF, there are 20 cs. Here it seems clear the course setup
- If there reentry in daily, it is the entry to setup Monthly

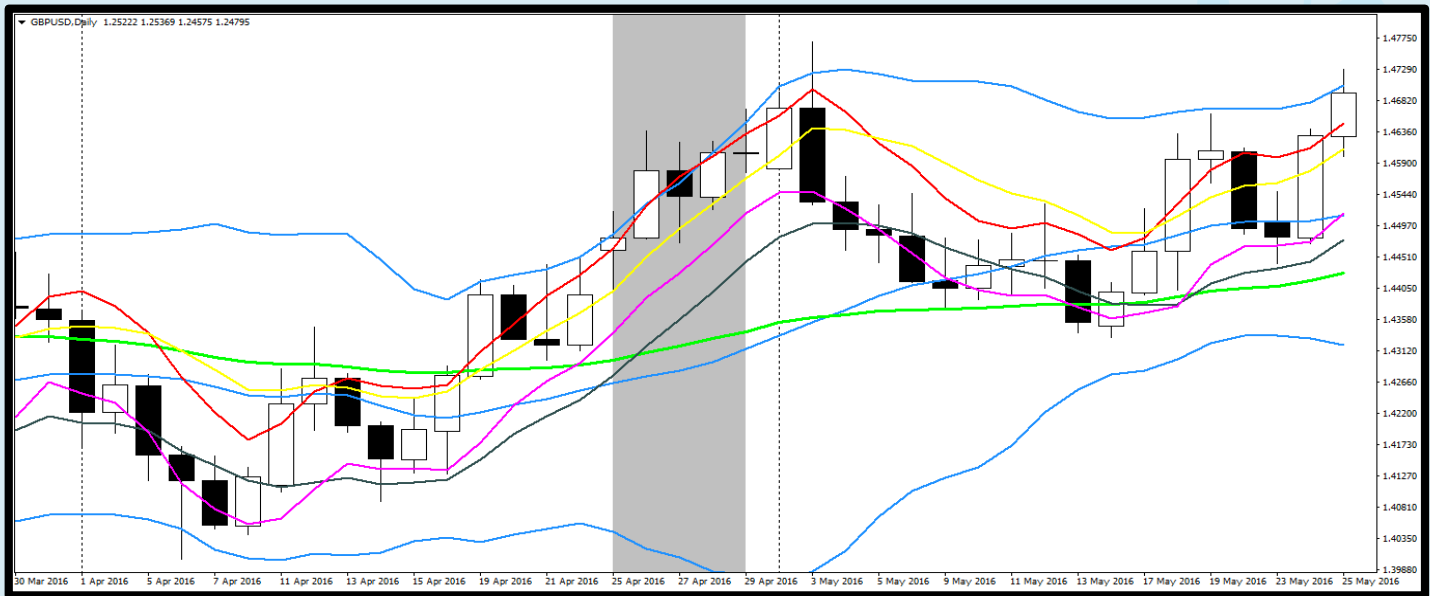


- The H4 has 120 cs
- There are several complete setup
- If rubbed 5/10 hi or low and CS is under the A50, each reentry is a beautiful entry

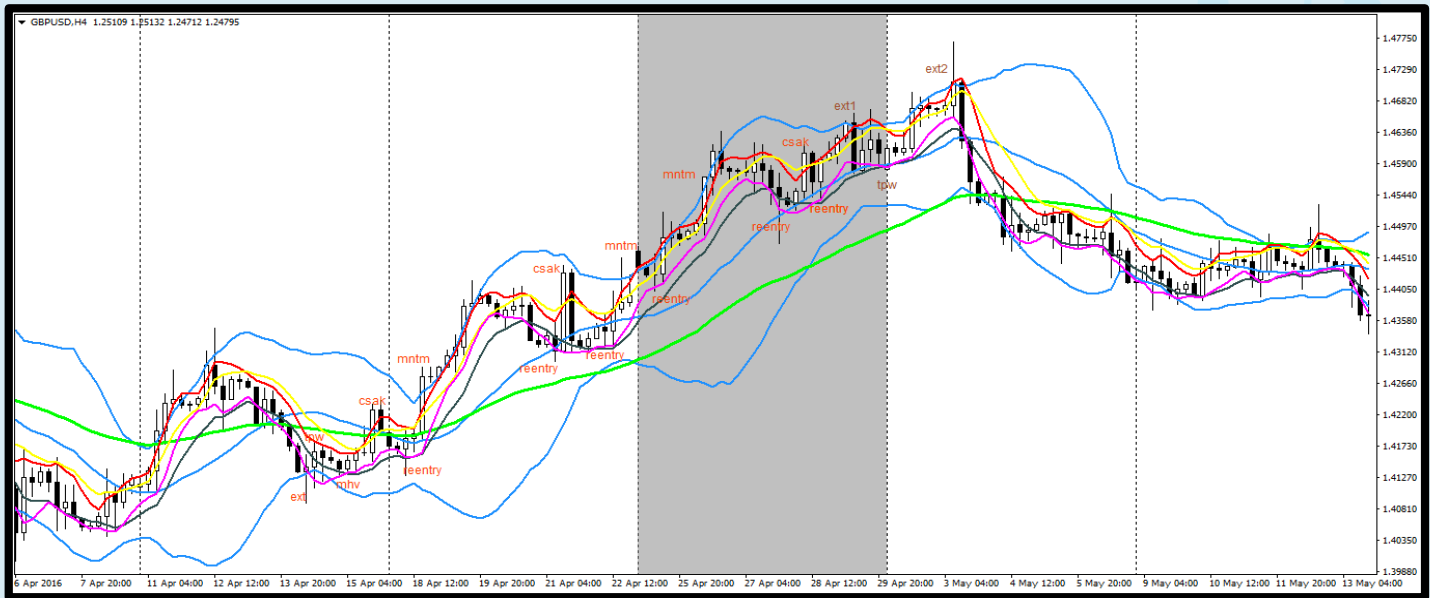
TF TRAVEL SMALL CANDLE IN WEEKLY



- 1 cs weekly
- Setup strong csa

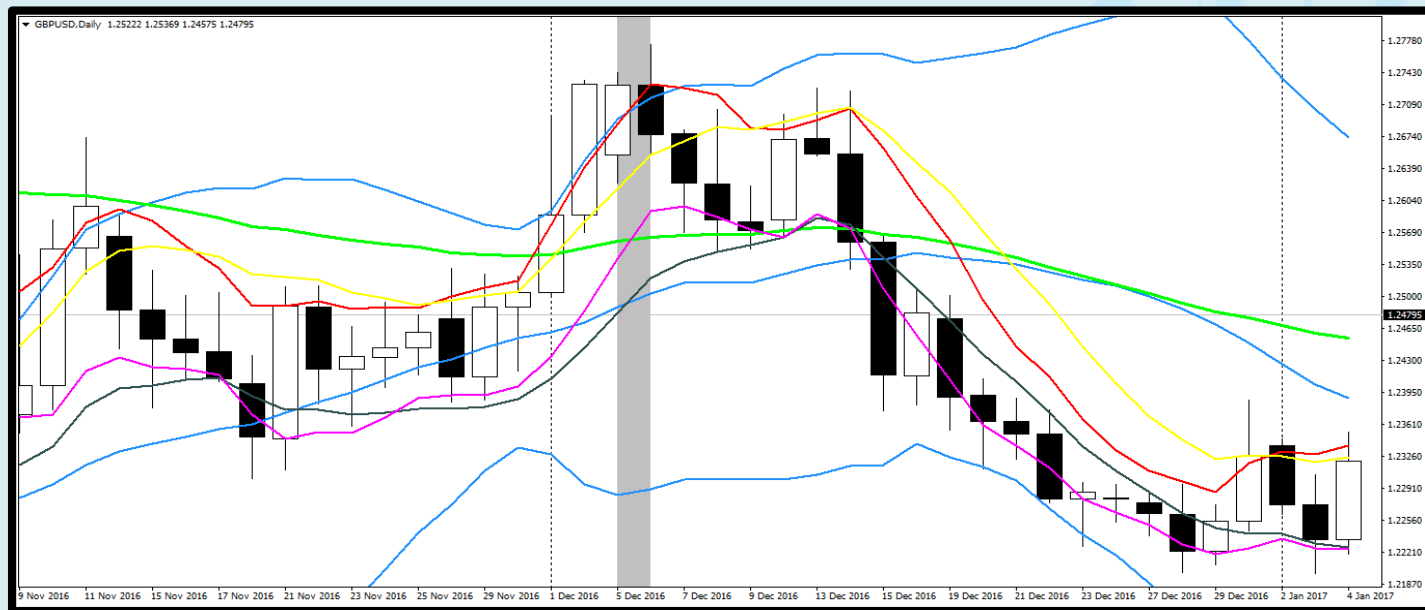


- The TF Daily, there are only 5 cs
- Cs travel a bit to make setup changes

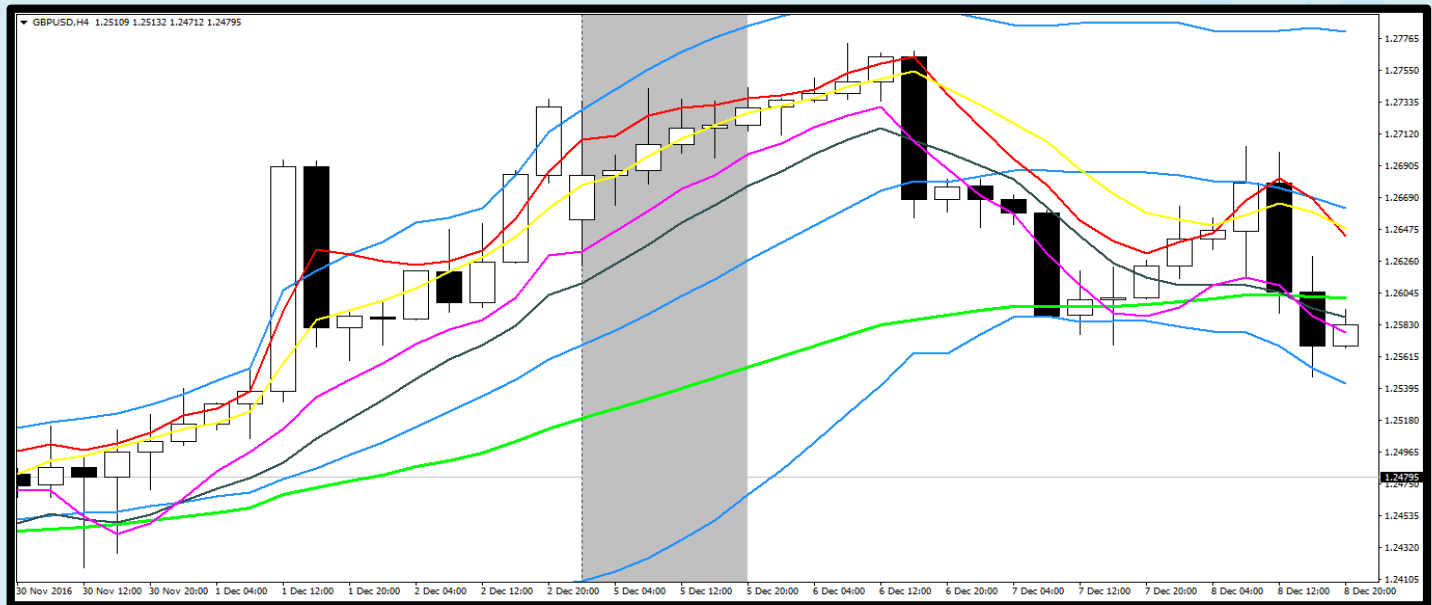


- The H4 has 30 cs
- Setup changes can be seen in situ
- If there reentry, and the direction of the TF, suitable for entry

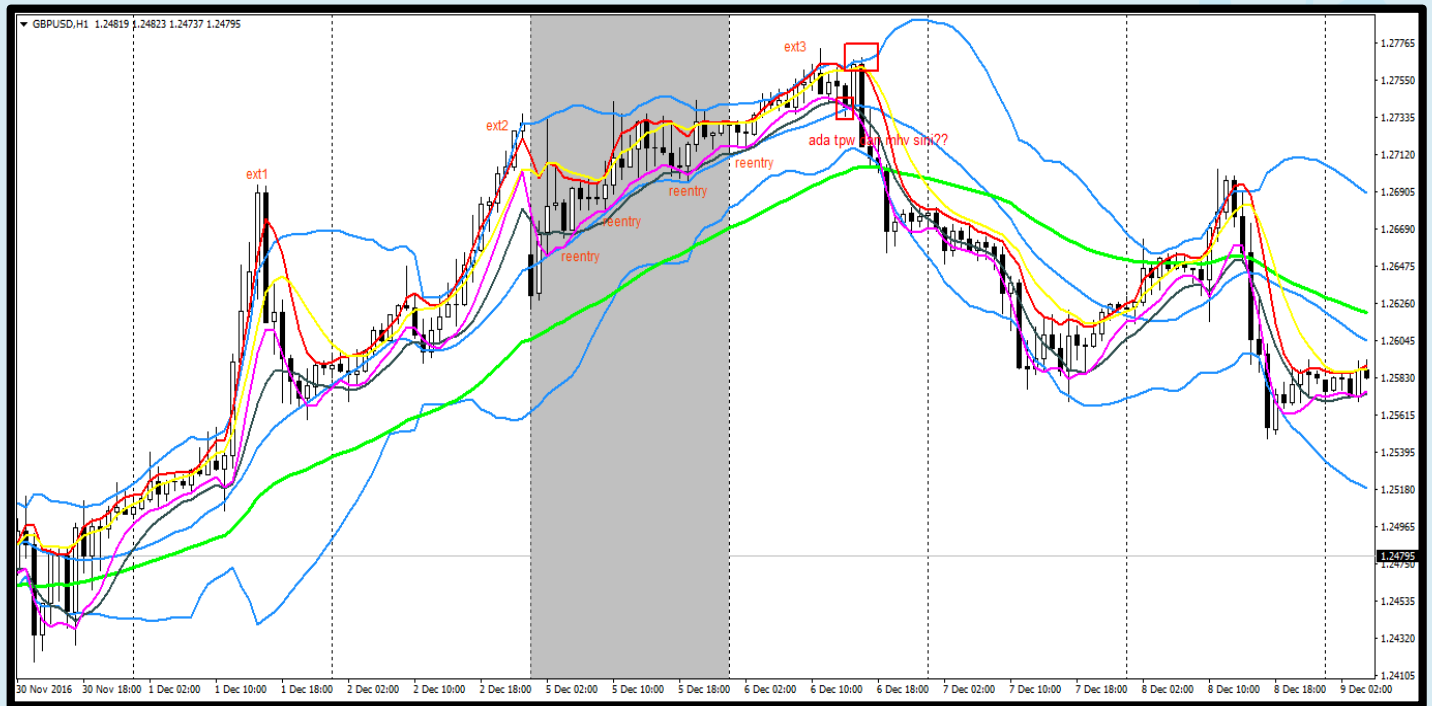
TF TRAVEL SMALL CANDLE IN DAILY



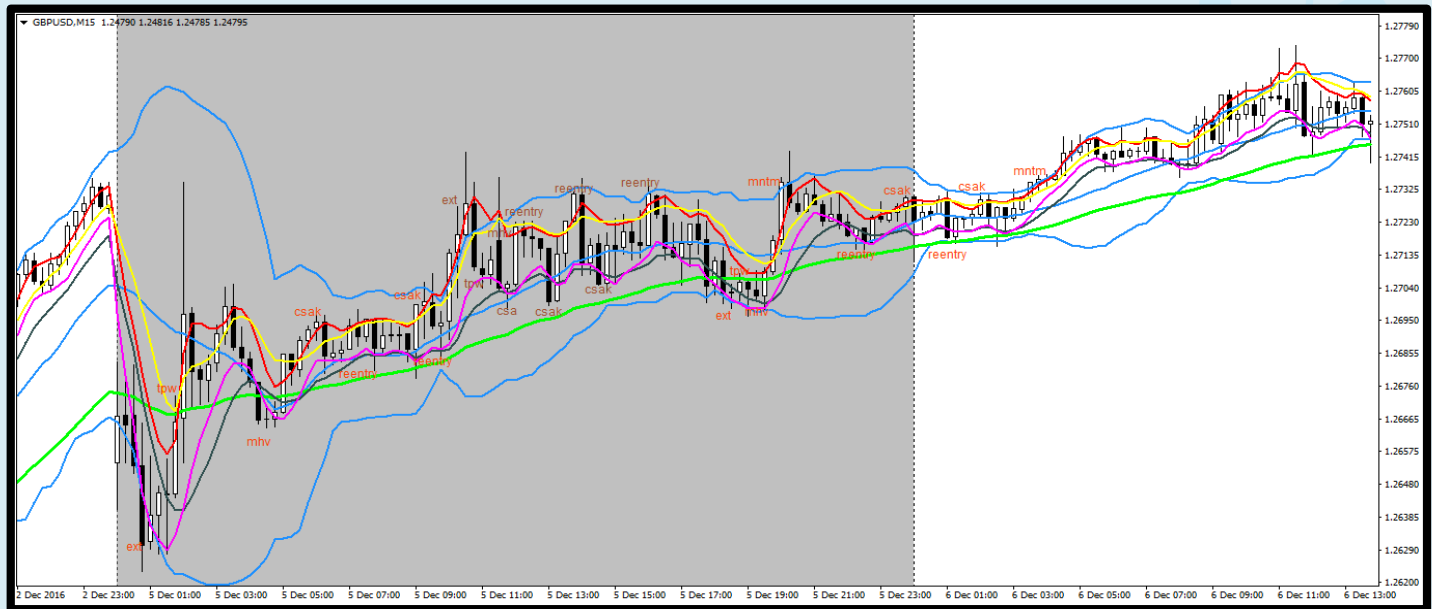
- 1 cs Daily
- setup extrem



- H4 has a 6 cs in daily
- Cs trip did not show changes in the course setup



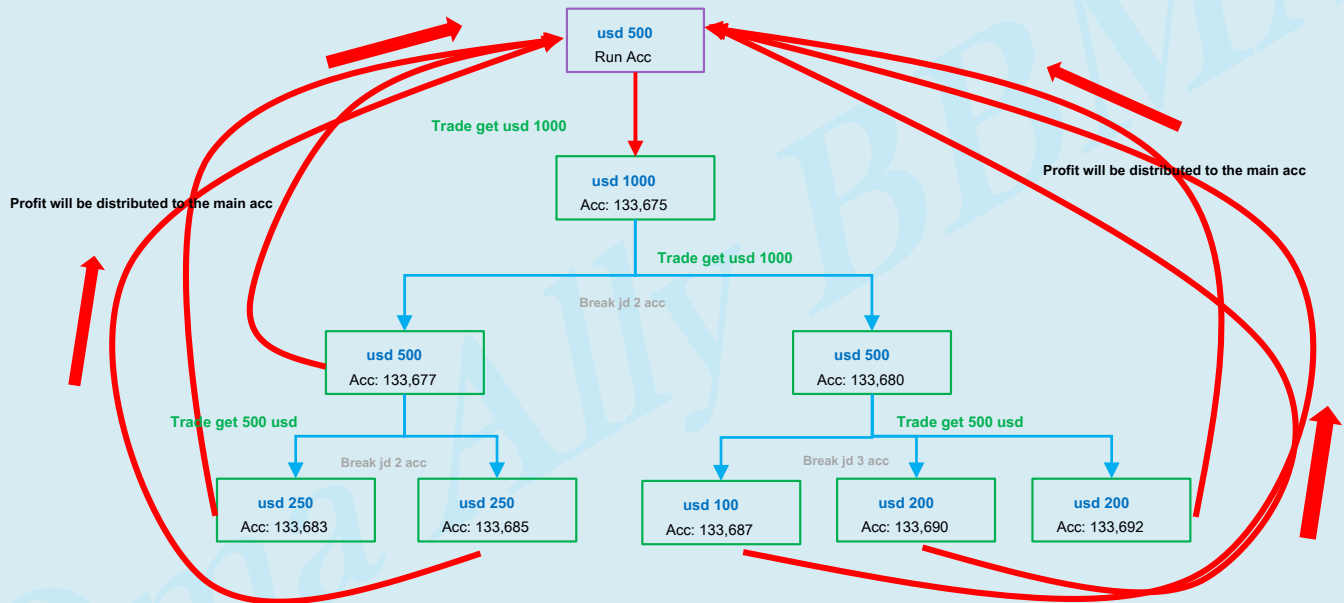
- In H1 24 to 1 cs cs daily, can you see the course setup here
- Each reentry, which surpassed ema50, can entry



- M15 has 96 cs, here we can see some setup complete
- If there reentry, and the direction of the TF, suitable for entry
- Entry by major TF. Do counterclockwise major tf

STRATEGY ACCOUNT

TRADE STRATEGY OF THE TRADE



Fractional Fractional account is what will work to get profit
and distribute profits to the main account

STRATEGY FOR TRADE ACCOUNT

- Account strategy charts a way to develop an account of the initial capital
- The breakdown of this account is opened in the cabinet brokerage account, not a bank account
- Initial capital was added to the primary account
- *Trade first in several months without making production*
- Any advantage that can make a breakdown into multiple accounts
- Once your account is growing, and fragments of the underlying accounts have been profitable, then move all the profits into the main account
- The main account is the role of money in and out, and it will be a reserve fund
- When there is the best entry, grab one of the last fragments and account entry with full margins

I SCALPER INDICATOR

- Indi Bb represents mid h4 to h1 tf seen in the first time
- Settings
 - **MA.TF = 240**
 - **MA Period = 20**
 - **MA.ma_shift = 0**
 - **MA.ma_method = 0**
 - **MA.applied_price = 0**
- With this indi, we can see changes in the course of the current market, and is used to find reentry
- During this indi cross, be careful because this is a period for determination

