

Fibonacci retracement customizable EA and order management in MT5

Main Features

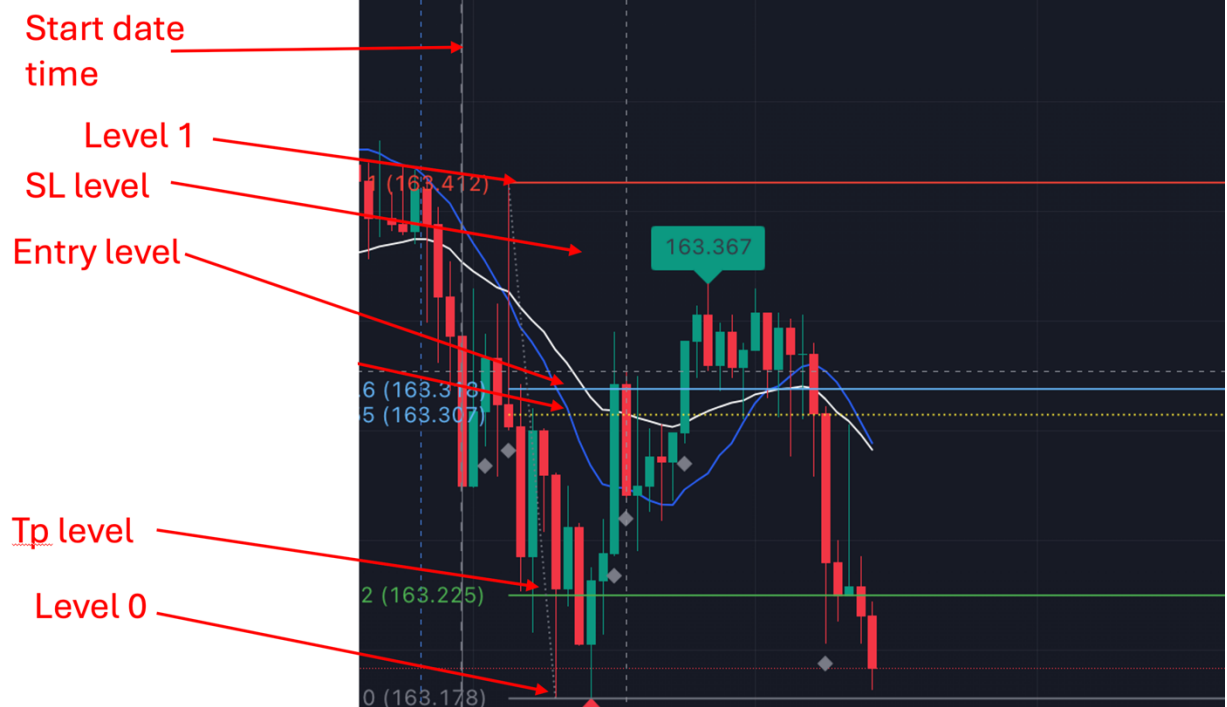
1. An EA who places orders based on a customizable Fibonacci retracement level. The levels (5 levels) can be specified in the settings, for example 0.5 for entry, 0.8 for SL and 1.1 for TP. When at the entry level the EA places a order. Position size based on % of the balance in the account or \$ in a monetary value. Virtual SL/TP. The SL and TPs that are hidden from the broker but are plotted on the chart and are controlled by the EA.
2. Fibonacci retracement is based on a date and time. Start for example 05 March 2024 at 23.00, enddate/time is current candle. Like <https://www.tradingview.com/script/ePJfCB4y/> in MT5
3. The orders are being controlled by the EA (position size, trailing stop, breakeven and so on)/ several possibilities from Trade Manager DaneTrades <https://www.mql5.com/en/market/product/97160?source=Site+Market+MT5+Utility+Rating006>
4. Entry/TP/SL are plotted at the chart and the other Fibonacci levels.
5. Filtering of trading conditions (for example pause, number of open trades allowed, tradingdays / tradinghours allowed, newsfilter, minimal spread in pips needed between TP and entry)
6. Notifications (alert, push, email and telegram)
7. Visual / Graphical panel 2 tabs
8. Magic Number
9. Overall color scheme can be like Trade Manager DaneTrades
10. Name Fibo Manager EA

Fibonacci retracement levels

- The EA identifies high and low values within the selected time frame, assessing the market's trend direction.
- Timeframe for calculation is timeframe Chart
- Within the specified date range, this EA effortlessly calculates the Fibonacci levels automatically.
- Daterange, for the begin there are two options (checkbox between the options): first one is automatically, the date is of the day before the current day, time has to be given in. Second option is a date and time to be set manually. Enddate/time is current candle.
- The levels of Fibonacci are to be given into the settings:

<input checked="" type="checkbox"/> --- FIBONACCI TRADE LEVEL	--- FIBONACCI TRADE LEVEL
<input checked="" type="checkbox"/> USE FIBONACCI LEVEL	true
<input checked="" type="checkbox"/> FIBONACCI ENTRY LEVEL	0.6
<input checked="" type="checkbox"/> FIBONACCI TAKE PROFIT LEVEL	1.5
<input checked="" type="checkbox"/> FIBONACCI STOP LOSS LEVEL	0

- The fibonacci levels (0, 1, entry, TP, SL) are plotted on the chart (colors for each level can differ and are adjustable trough settings)



This is from tradingview (<https://www.tradingview.com/script/ePJfCB4y/>) but this in MT5

Tradingdays Filter Settings:

- **AllowTradingOnHolidays:**
 - A boolean setting indicating whether trading is allowed on holidays.
- **DaysToTrade:**
 - The specific days of the week when trading is permitted.
- **HourToStartTrading to be set per Weekday:**
 - The starting hour for trading activities for that specific weekday.
- **HourToStopTrading to be set per Weekday:**
 - The ending hour for trading activities for that specific weekday.

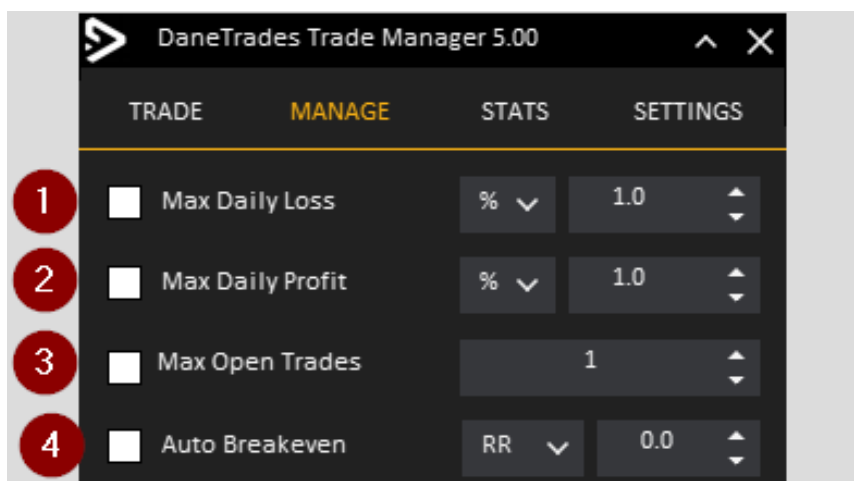
News Filter Settings:

- **NewsFilter:** NewsFilter Settings
 - These settings are related to news filtering.
- **EnableNewsFilter:**
 - A boolean setting to enable or disable news filtering.
- **MiddleNews:**
 - A boolean setting for medium-impact news.
- **HighNews:**
 - A boolean setting for high-impact news.
- **IndentBefore:**
 - The time before medium-impact news events when trading is paused.
- **IndentAfter:**
 - The time after medium-impact news events when trading resumes.
- **HighIndentBefore:**
 - The time before high-impact news events when trading is paused.
- **HighIndentAfter:**
 - The time after high-impact news events when trading resumes.
- **CheckSymbol:**
 - The currency symbols affected by news filtering.
- **AutoTimeZone:**
 - A boolean setting for automatic time zone adjustment.
- **GMTplusManual:**
 - Manual adjustment for the GMT time zone.
- **DrawNewsLines:**
 - A boolean setting to draw lines on the chart for news events.
- **URL1:**
 - URL for accessing news information.
- **URL2:**
 - Additional URL for accessing news-related information.
- **URL3:**
 - Additional URL for accessing news-related information.

Risk Management, Trade and Position Management tab (1) through/to be set in a visual panel

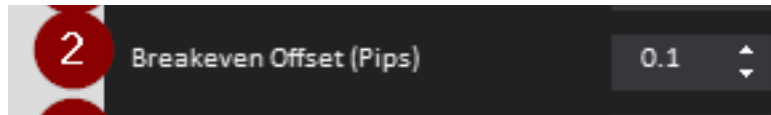


- Position size is based on % of the balance of the account or \$ in a monetary value
- Pause new trading, checkbox if checked no new trading is allowed, open positions are still being handled.
- Daterange: Starting time (fibo) automatically (day before as date) and time (to be given in) of manually date and time (need to be given in) checkbox between to options and the necessary inputfields
- Tradingdays and hours filter enabled or disabled with checkbox
- Newsfilter medium impact news enabled or disabled with checkbox
- Newsfilter high impact news enabled or disabled with checkbox
- Input field Minimal spread in pips needed between TP and entry, if not equal or greater then no trade is allowed.



- Max Daily Loss in % of the Account to automatically close all trades when value is hit. Protects the account from too much drawdown and stops from overtrading. When hit all trades will be closed and the EA should not be able to enter any more trades.
- Max Daily Loss in \$ of the Account to automatically close all trades when value is hit. Protects the account from too much drawdown and stops from overtrading. When hit all trades will be closed and the EA should not be able to enter any more trades.
- Max Daily Profit Target in % of the Account to automatically close all trades when target is hit. When hit all trades will be closed and the EA should not be able to enter any more trades.
- Max Daily Profit in \$ of the Account to automatically close all trades when target is hit. When hit all trades will be closed and the EA should not be able to enter any more trades.
- Max Open Trades on the account. When number of open trades is reached no more trades will be allowed to open from the EA until at least one of the open trades of the account is closed.

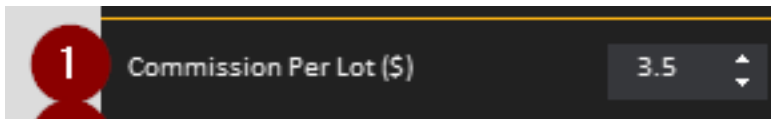
- Auto breakeven stop loss settings Pips or RR (RR is based on SL and TP levels from the settings for Fibonacci levels) and a checkbox, if checked the auto breakeven is used for the current Symbol.
- Breakeven Offset - When using Breakeven settings how far from entry is breakeven in pips. A value of one would be 1 pip above Entry for Buys and 1 pip below Entry for Sells



- Trailing stop settings and checkbox, if checked the trailing stop loss is used for the current Symbol.



- Commission Per Lot(\$) - Adds commission into the lot calculation for more accurate risk calculation.



Send Notifications settings in visual panel tab (2)

- Send alert Notification
 - Send Push Notification
 - Send Email Notification
 - Send Telegram Notification
-

- Notify if Order is Entered (lotsize, entry, TP, SL)
- Notify if Order hit TP or SL
- Notify if Order goes Break Even
- Notify if Partial gets Taken
- Notify if max daily loss is reached
- Notify if max daily profit is reached
- Notify if trading is restricted
- Notify if trying to open a position and there is not enough margin in the account.

