

# CLEVRFX

## User Manual

### Table Of Contents

<b>Must Read</b>	<b>2</b>
<b>RECOMMENDATIONS</b>	<b>2</b>
<b>Managing Drawdown/High Impact News Setting*</b>	<b>3</b>
<b>Installation</b>	<b>5</b>
Video Tutorial here - How To Install ClevrFX	5
Open Data Folder	5
Copy EA to Expert Folder	5
Refresh MT4	7
<b>Setup For License</b>	<b>8</b>
Open Options	8
Add licensing server	8
<b>Run The EA</b>	<b>9</b>
Turn on Autotrading	9
Load all symbols	9
Open a chart	10
Attach the EA	10

## Must Read

*All licenses are demos until we fully activate them. It doesn't have to be a full version to start trading. Usually gets activated within 24hrs. Any unknown accounts will get deleted.*

**First**, connect Clevrfx to your trading account following the installation guide below.  
After successfully connecting Clevrfx do the following.

Send order number or full name

Followed by trading account number

**Send it here** - <https://t.me/clevrfxlicense>

Every copy includes 2 free licenses. You can switch them whenever you want or purchase more licenses.

+2 extra accounts = \$100

+4 extra accounts = \$150

*4 accounts is the max\**

**This trading A.I cannot be backtested. It works in sync with other pairs to balance drawdown**

## RECOMMENDATIONS

**Pairs:** EURUSD and GBPUSD

**Lot size:** Use auto lot size option

**Min balance:** 1000usd or use mini, micro or cent account

**Time frame:** 1hr

**PROP FIRMS:** Use same setting above, just change the lot sizes.

**Lot size:** Use .03 lots for every \$10k.

Feel free to ask us for prop firm lot size recommendations or check the telegram chat.

**News:** Try to avoid the most high impact news. CPI, PMI, NFP, FOMC, Fed Talks etc

*Clevrfx is capable of passing prop firms but doesn't mean it's guaranteed to pass every time. You're chances are higher than most. Propfirms will need to be more careful with not hitting the strict drawdown limit. check how to manage drawdown below.*

Best settings are already set as default; however, all the options are changeable so that you can adjust them as per your liking. We always recommend testing setting on demo first then switching to “Live” once you’re comfortable.

## Managing Drawdown/High Impact News Setting\*

**During major news set trade distance to 80.0 for GBPUSD and 60.0 for EURUSD**

News: News to watch out for. CPI, PMI, NFP, FOMC, Fed Talks etc

123	Strategy Type	Medium Risk
ab	ORDER	===== ORDER SETTINGS =====
123	Lot Type	Manual
1/2	Initial Lot Size (Manual)	0.02
1/2	Trade TP (pips)	10.0
1/2	Lot Multiplier	0.75
1/2	Max Lot Limit	0.0
123	Increase Lot Size After Trades	1
1/2	2nd Trade Distance	80.0
1/2	3rd Trade Distance Multiplier	1.0
1/2	Next Trades Distance Multiplier	1.0
ab	RISK_MANAGEMENT	===== RISK MANAGEMENT =====
1/2	One Trade Per Candle	true

These settings will help you avoid high drawdown. Can be used 2 ways. If you don't have time can use it 24hrs before high impact news or can it change it once you see a certain amount of drawdown.

Check for news here: <https://www.forexfactory.com/>

The VPS we personally use: <https://www.vpsforextrader.com/aff.php?aff=5138>

**Important** - Increase your profits with a good broker that has low spreads and cheap swap fees.

**Brokers we use:**

USA broker - <http://t.lqdfx.com/?t=uv4kGb>

International broker -

<https://www.vantagemarkets.com/?affid=NzE1Mjc%3D>

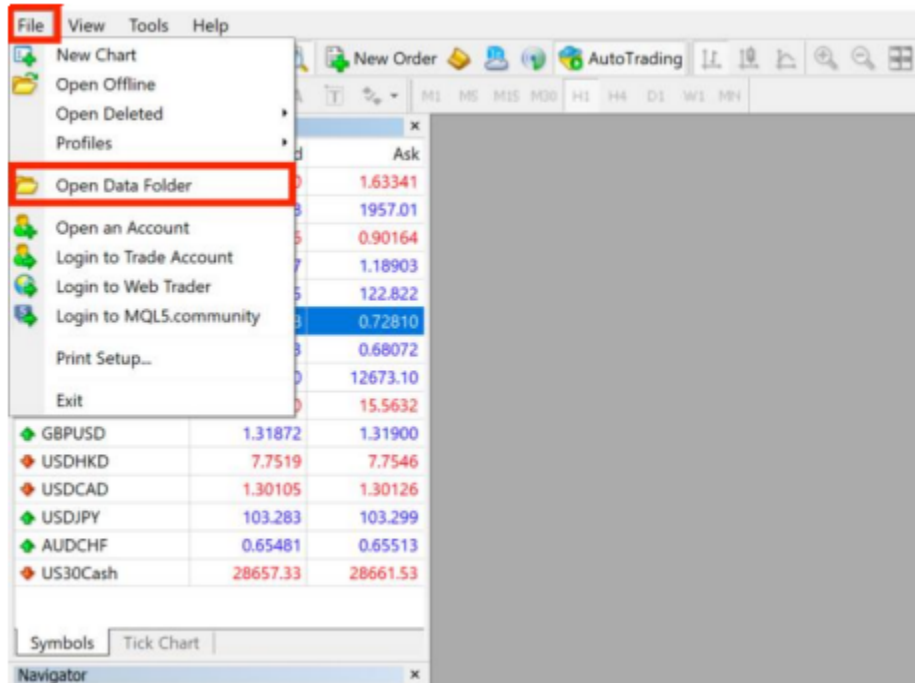
Account type: ECN, Max leverage 1:200 and up

## Installation

Video Tutorial here - [▶ How To Install Clevrfx](#)

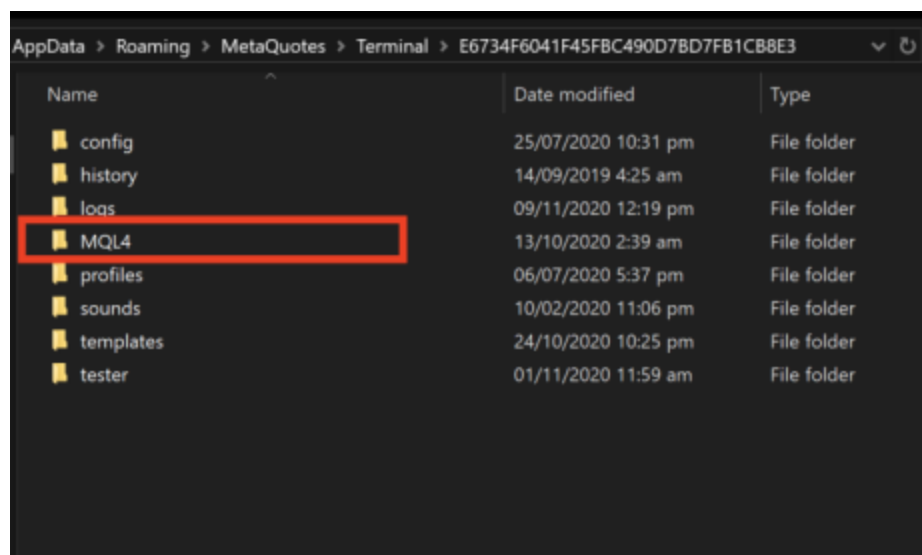
Open Data Folder

Click **File > Open Data Folder**

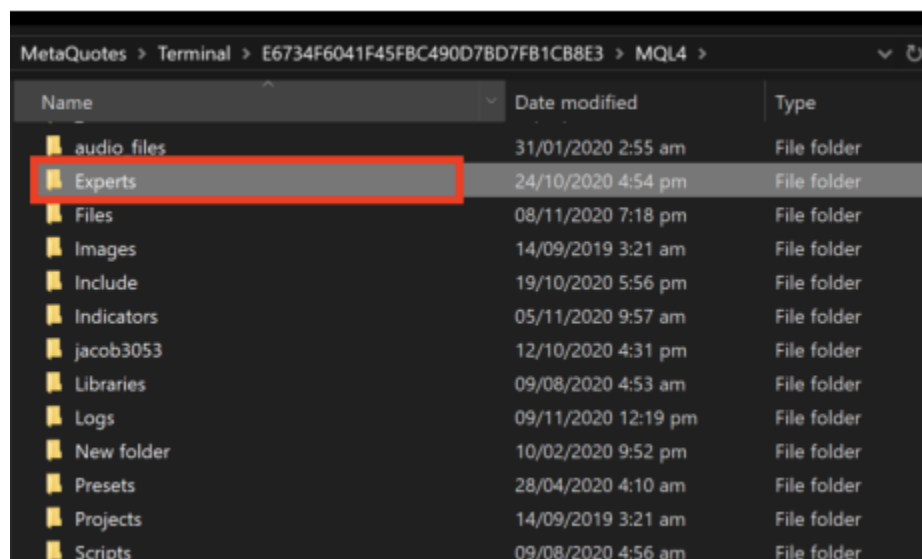


Copy EA to Expert Folder

Open **MQL4** folder



Then go to Experts



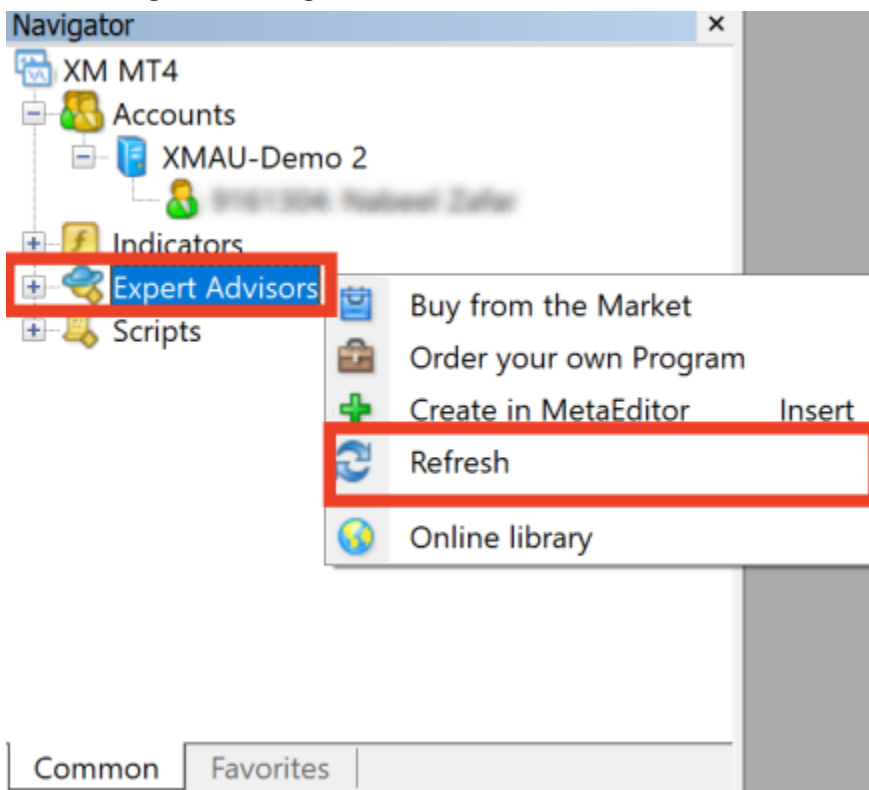
Copy the downloaded Clevrfix.ex4 and paste the file into this folder

« Terminal > E6734F6041F45FBC490D7BD7FB1CB8E3 > MQL4 > Experts

Name	Date modified	Type	Size
...	...	...	...
...	...	...	...
...	...	...	...
...	...	...	...
...	...	...	...
CleavrFX EA.ex4	11/27/2022 4:56 PM	EX4 File	189 KB

## Refresh MT4

In the navigator tab right click on **Expert Advisors** and then select **Refresh**

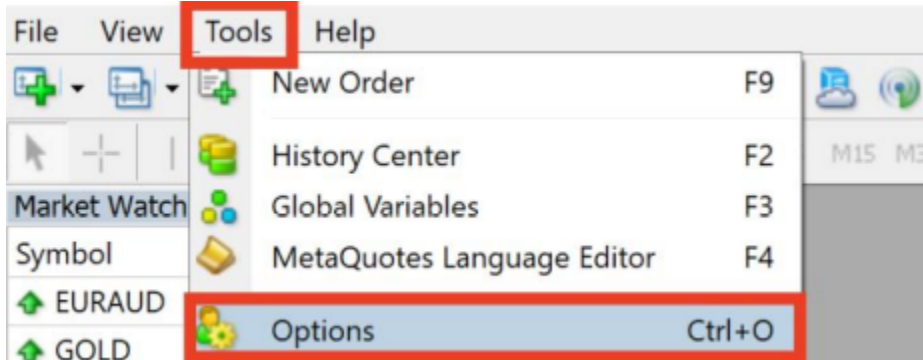


The EA installation is completed.

## Setup For License

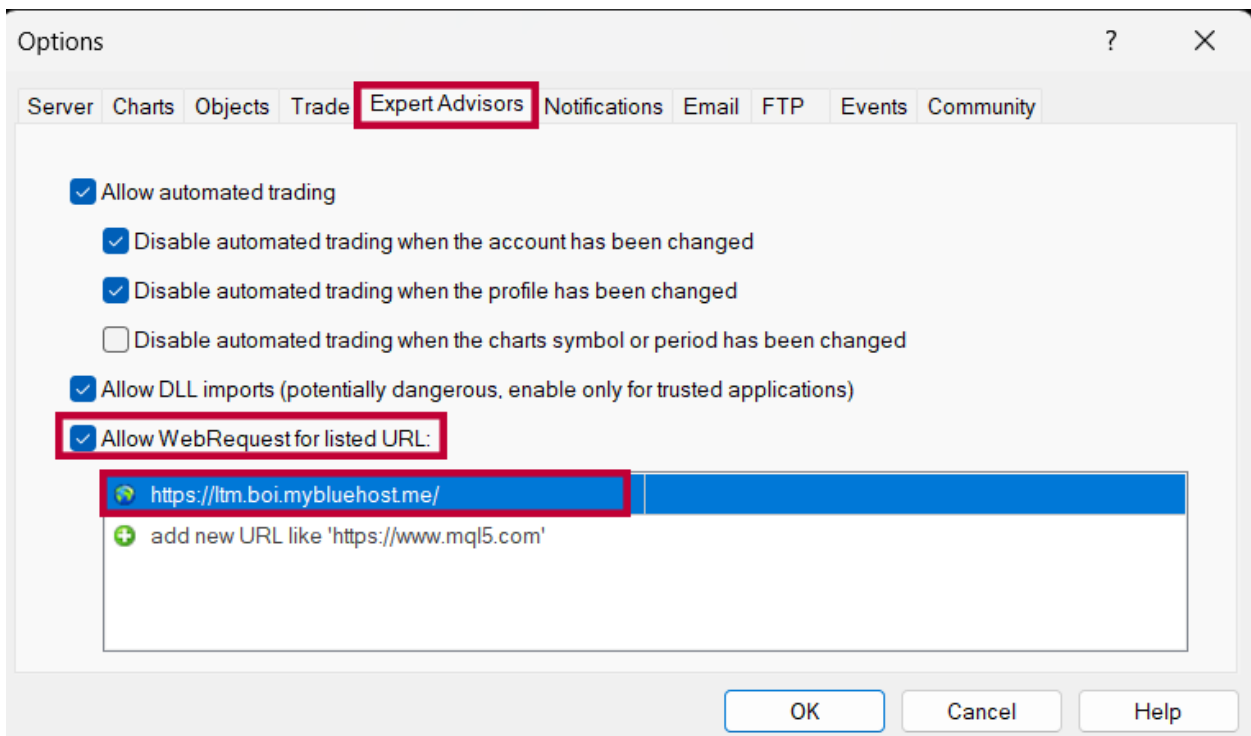
### Open Options

Click on **Tools > Options**



### Add licensing server

Go to **Expert Advisors** tab and check **Allow WeRequest for listed URL:** and add the following URL in the list - <https://itm.boi.mybluehost.me/> then press **OK**

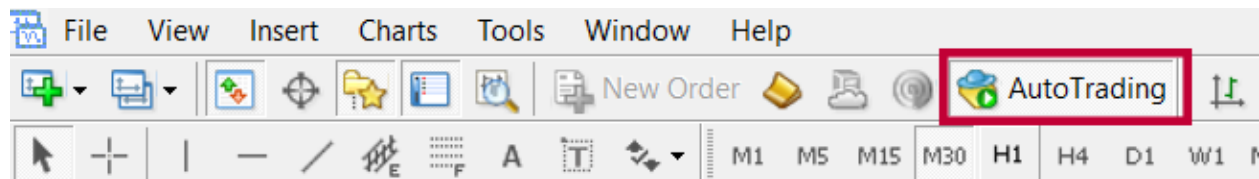


Now you're officially ready to start ruining the EA.



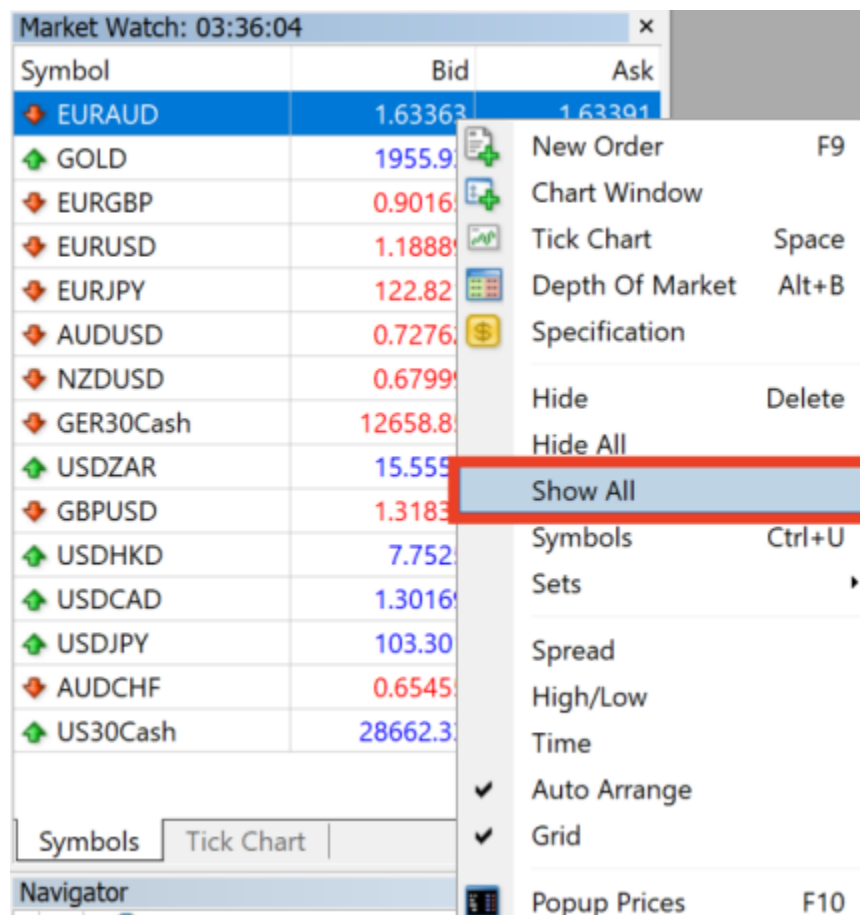
## Run The EA

Turn on Autotrading



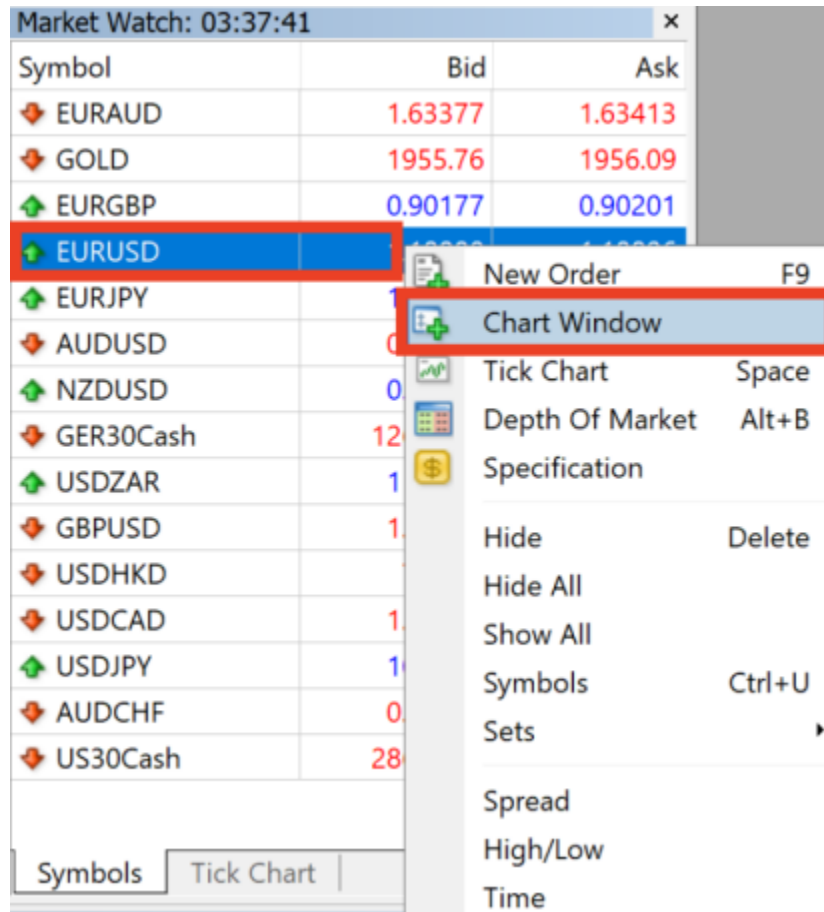
Load all symbols

Right click on **Market Watch** and select **Show All**



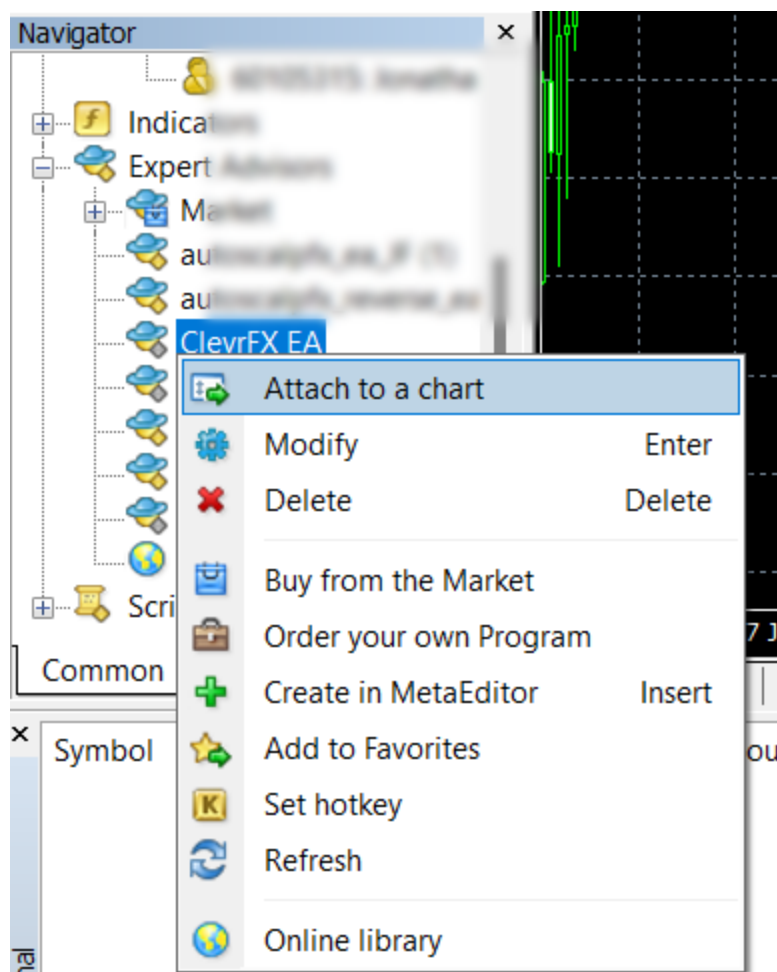
## Open a chart

Now right click on the chart you want to open and select **Chart Window** ( in this example I'm opening a EURUSD chart ).



## Attach the EA

In the Navigator right click on **CleavrFx** and select **Attach to a chart**



Now the EA ClevrFX should be running on the selected pair, If you want to it run on another pair then just repeat the last two steps ( Open a chart and attach the EA) for that pair.

If you have any questions then please contact us at <https://t.me/clevrFX>

**Please trade responsibly and Enjoy!**