

Moon

Mercury

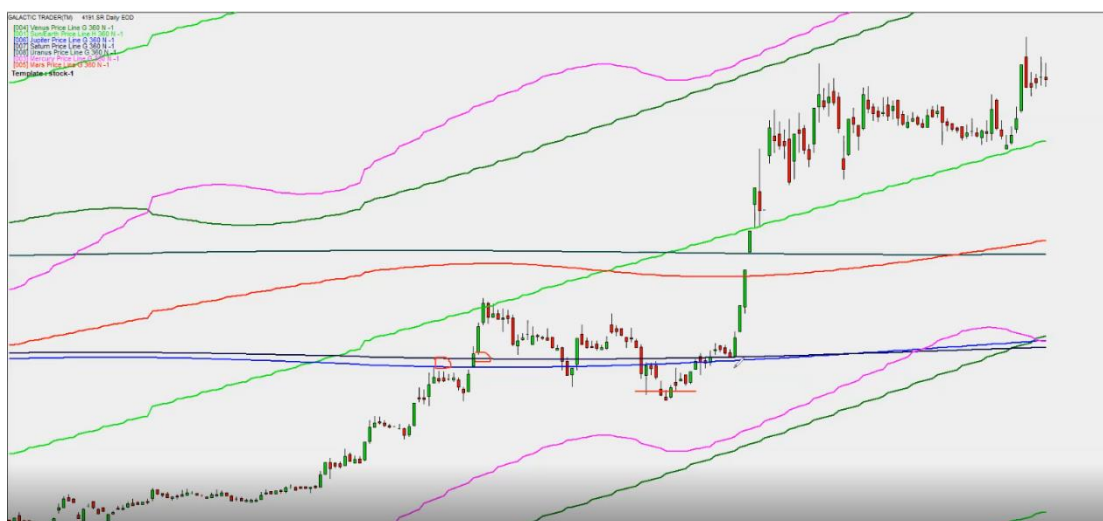
Venus

Mars

Jupiter

These are the important planets whose lines we want to show on the chart, or all the planets

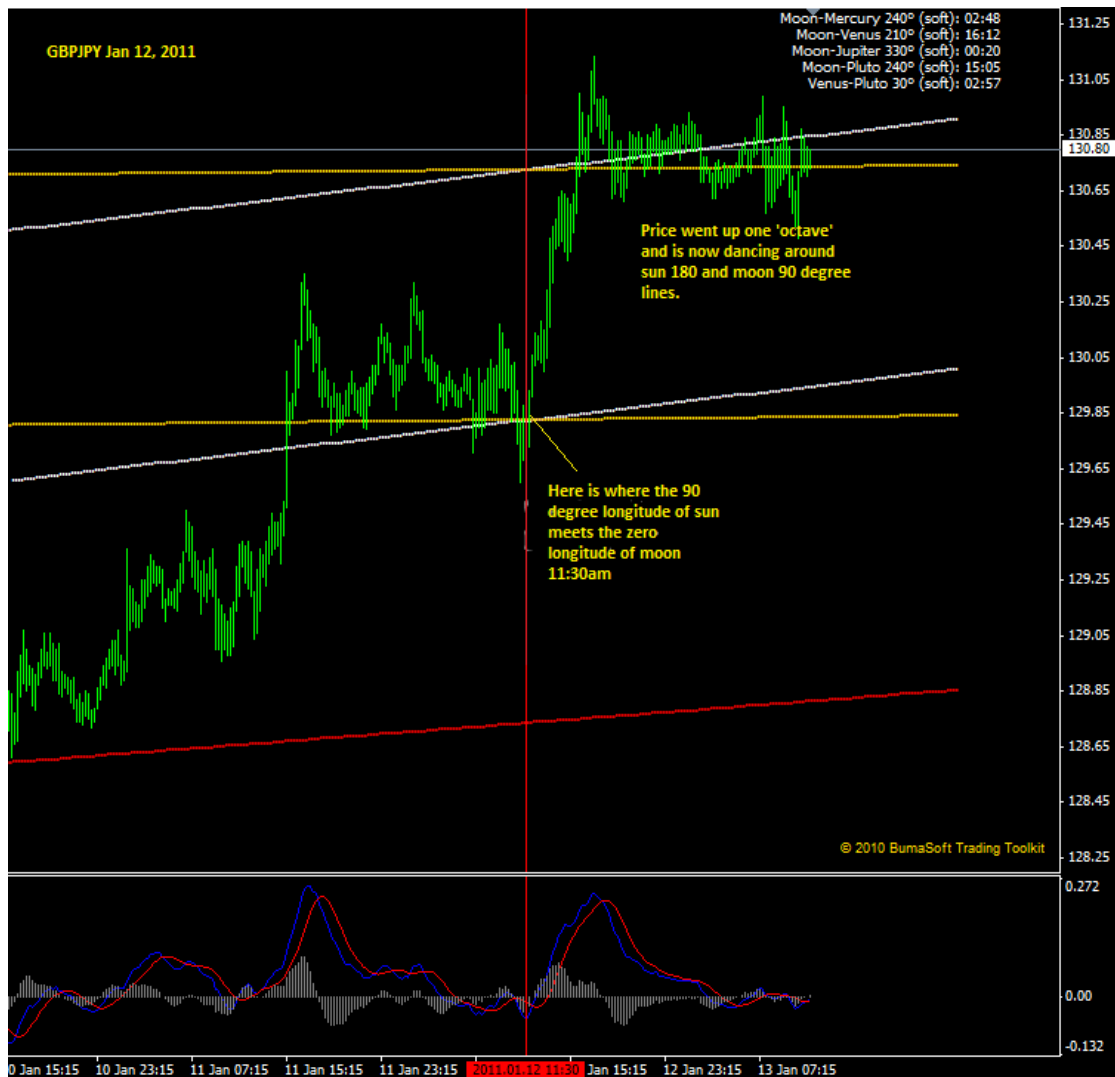
It shows the current degree of the planet and gives me the locations of the conjunctions with vertical lines



On the web I found an indicator that plots planetary cycle lines in an indicator window.

I want something similar, but on the same chart, as in the photo, the averages are displayed

Animated in the same way.



The meeting of the planetary lines and the drawing of a column showing the time and date

Showing the intersection lines of the planets for a week ahead, along with

showing the date of the intersection

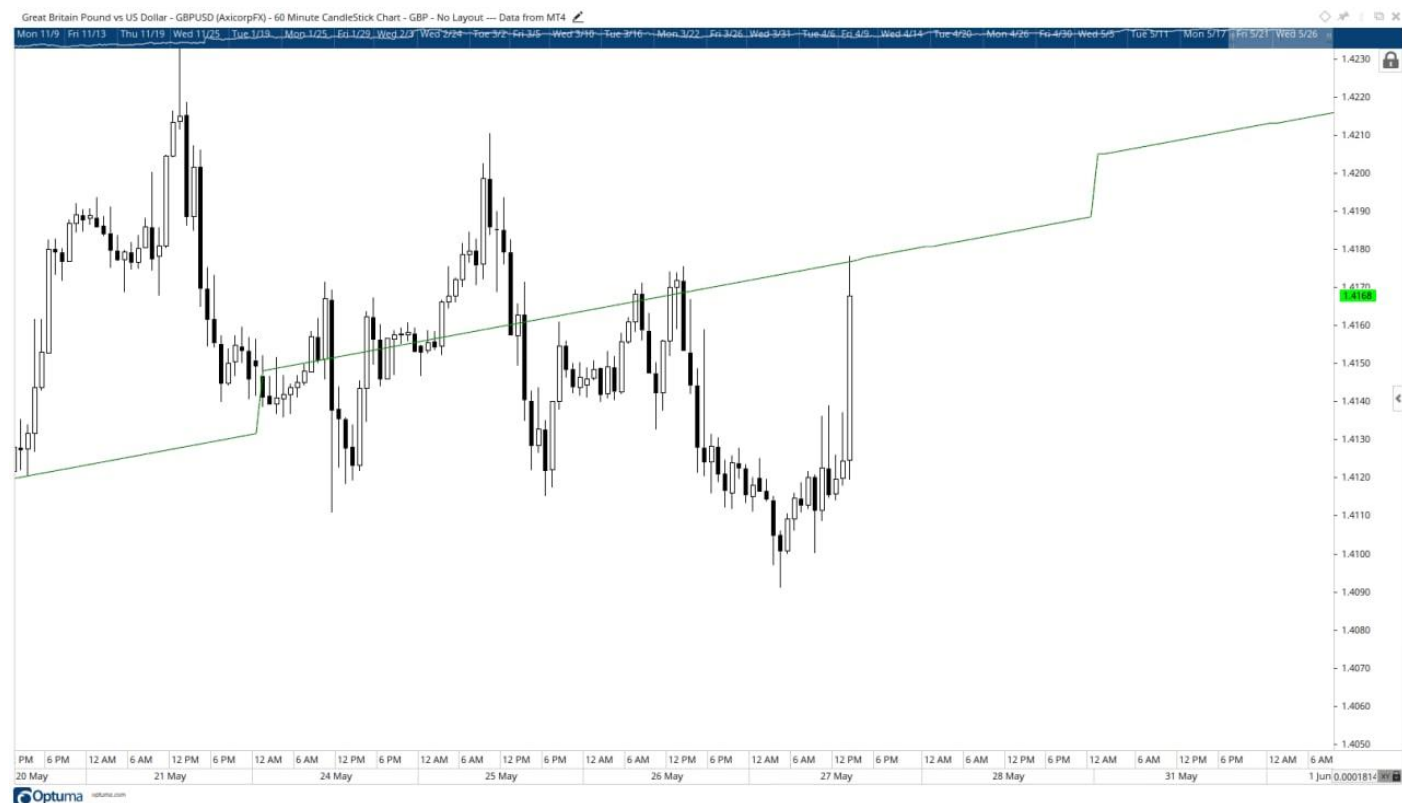
Planetary cycles - planetary relationships - lunar cycles (full moon - new moon)

Converting the degree of the planets into a price on the chart using lines

All planetary lines on the chart



The planetary lines are designed as shown in the picture below



So I can choose the planets that I want to show on the chart and hide the rest

