



# THE WOLF MASTER

Instruction Video:

<https://www.youtube.com/watch?v=sUhaHzV9LcY&feature=youtu.be&hd=1>

- Indicator is a modified version of a double top/bottom indicator. See slides for V1 and V2 setups.
- Indicator walk back from current price and find closes support/resistance (Fractal/5 candle s/r). Resistance go backwards for higher highs. And for Support always go lower lows.
- Indicator is placed on one chart and scan all listed under symbols (Config).

#### INDICATOR SETTINGS:

- **Filter 2nd Test:** [Spread/Pips/False] (PIP's allowed for 2nd re-test wick to be displaced)
- **Candles Between Top/Bottoms:** [1/User Selected Number] Default: 1
- **Max Re-entry signals:** [One Time/Unlimited/False]
- **Show Agreement Symbols:** [True/False]

#### SYMBOLS TO SCAN:

AUDUSD,AUDCHF,AUDGBP,XAUUSD etc (Max possible?)

#### SCAN TIMEFRAME:

M5 up to Monthly (One per line) [False/True] Default: M,W,H4 as True

**Alert on Timeframe Display/Panel Agreement:** (Email/Push/Pop-Up)

**Alert on Re-Entry Wick Zone (Slide 5 and 8):** (Email/Push/Pop-Up)

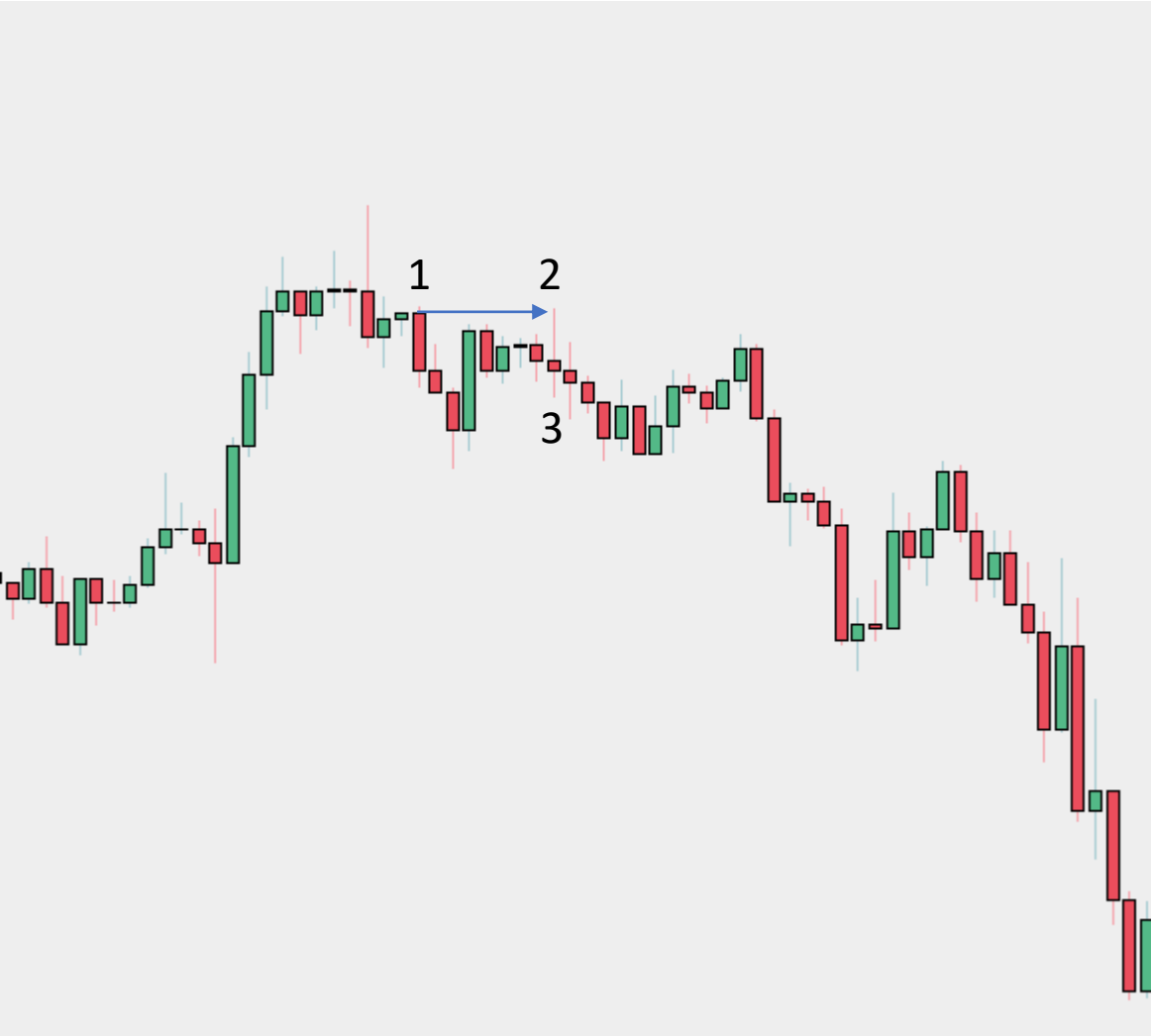
DISPLAY ON CHART:

- Symbol M – W – D – H4 – H1 – M30 – M15 – M5 - Retest Start – Retest Distance (default: M,W,H4)
- AUDUSD (On click open TF/Symbol a new chart showing Hunter with arrows)
- Display/Panel below only show selected TF if set to True in config.
- Alert is sent when all TF's agree (If M,W,H4 is selected. Alert when H4 closes and agree etc.)
- Re-entry start see 6th and 9th slide for sell/buy
- Re-Entry PIP distance. Is distance to re-entry wick zone.

- Example of panel on chart:

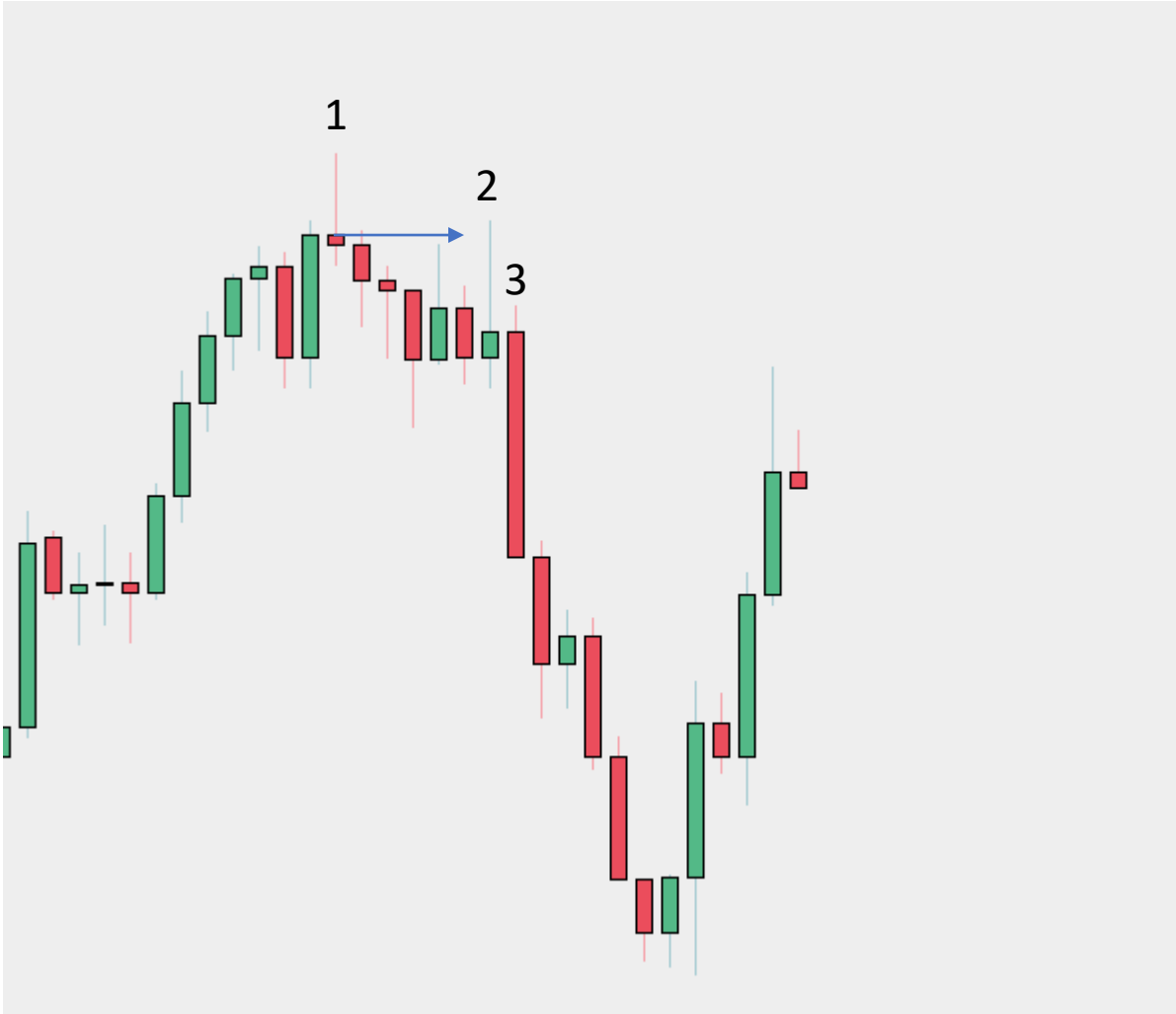
[illegible]

## SELL HUNTER SETUP V1



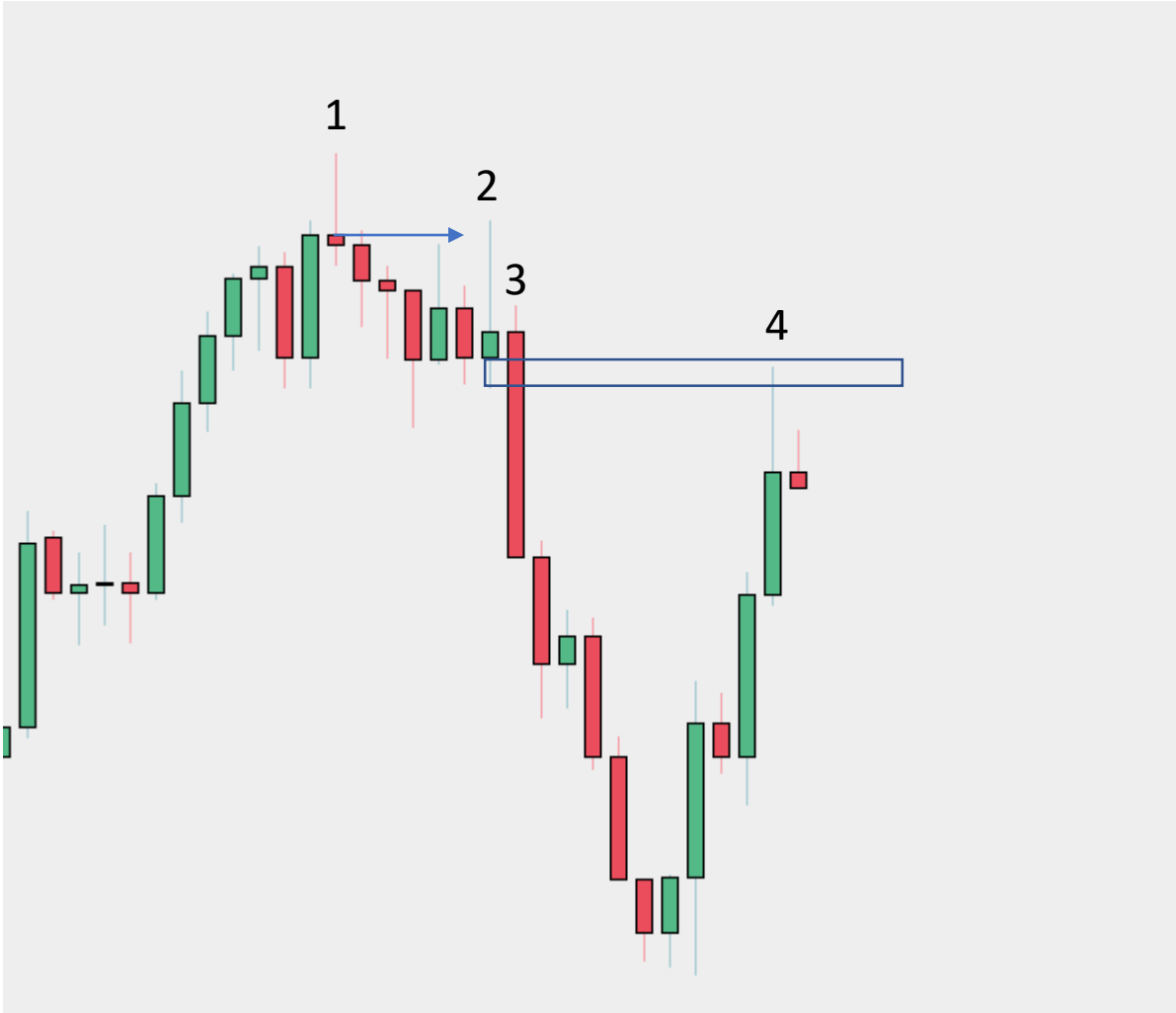
1. A HIGH
2. Re-test of HIGH as wick.
3. Body is bearish so print DOWN arrow in display.

## SELL HUNTER SETUP V2 (Need confirmation)



1. A HIGH
2. Re-test of HIGH as wick. But candle is bullish. So we need confirmation.
3. Bearish candle body that is clearly longer than (2) body bull. So trade direction is confirmed and we can now print an arrow down for this pair and timeframe.

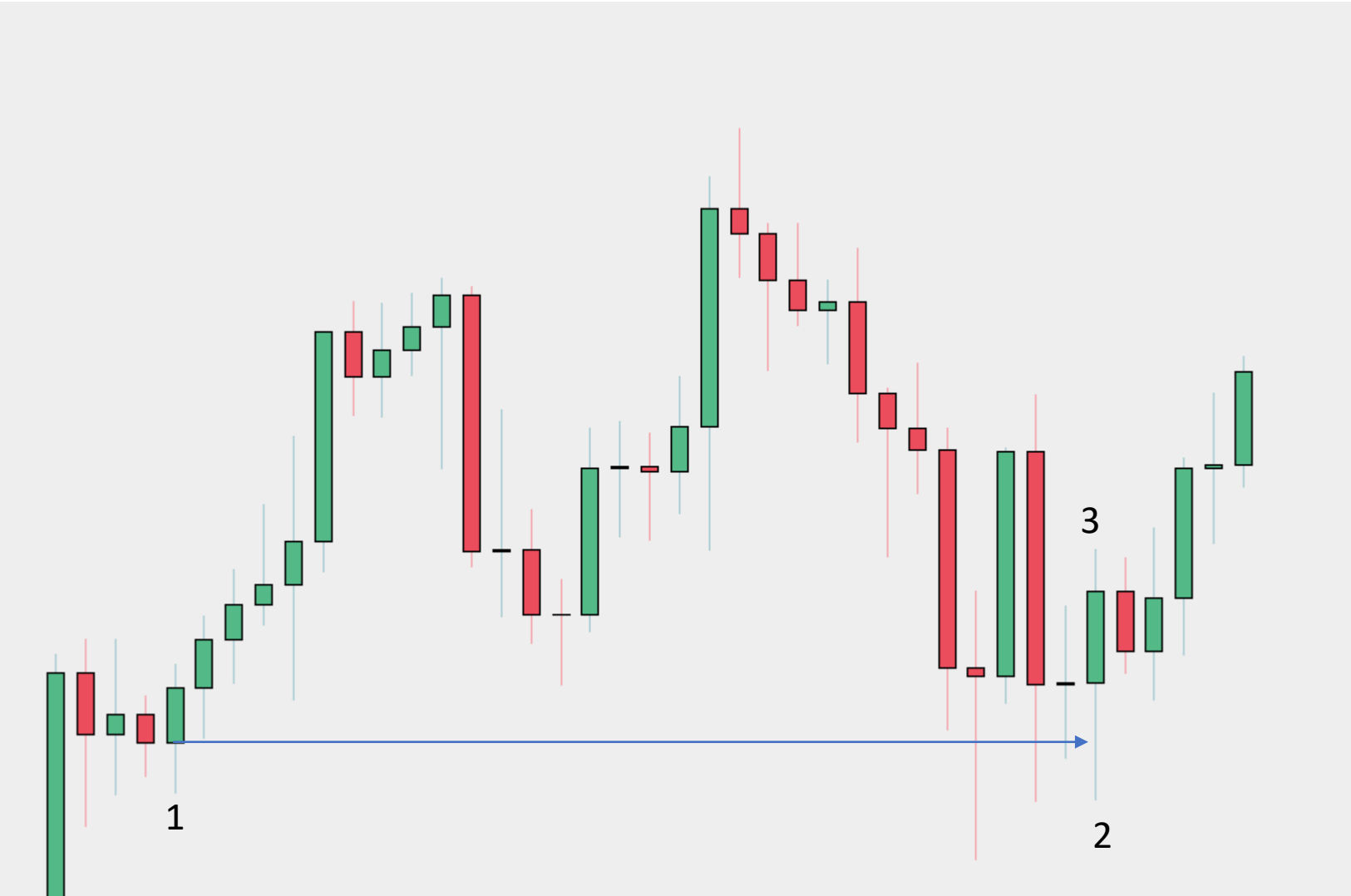
## SELL HUNTER SETUP (RE-TEST ALERT)



4. If price comes back into HUNTER zone after being confirmed. And all TF's chosen are in agreement. Then we send an re-test alert.

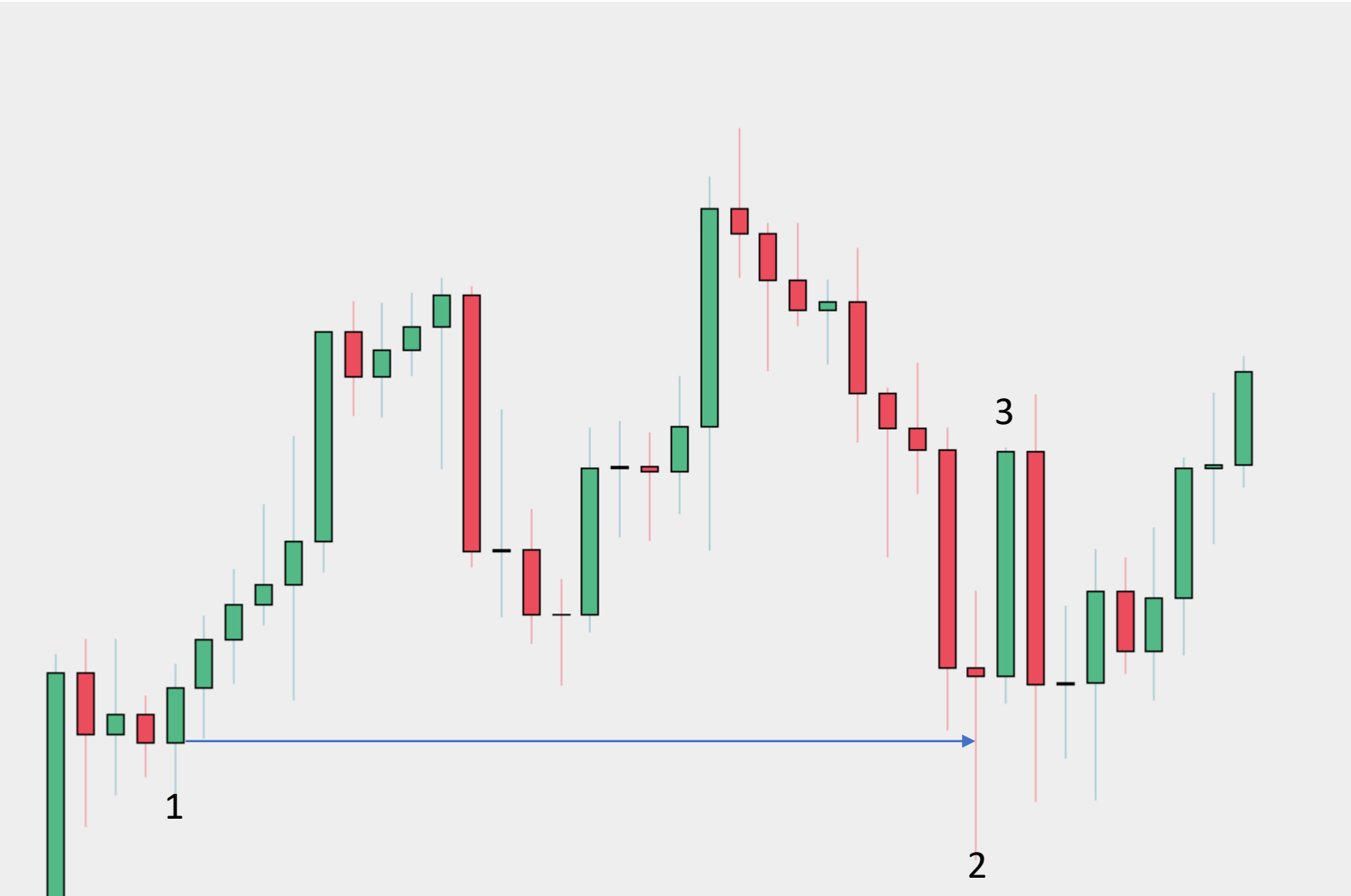
SO if the price re-visit the box (Hunter candles wick) and all Timeframes (TF's) chosen are in agreement. Then we alert for possible re-entry.

## BUY HUNTER SETUP V1



1. A LOW
2. Re-test of LOW as wick. As BULL:  
SO we can print an up arrow for  
this pair and timeframe.
3. Body is bullish so print UP arrow  
in display.

## BUY HUNTER SETUP V2 (Need confirmation)

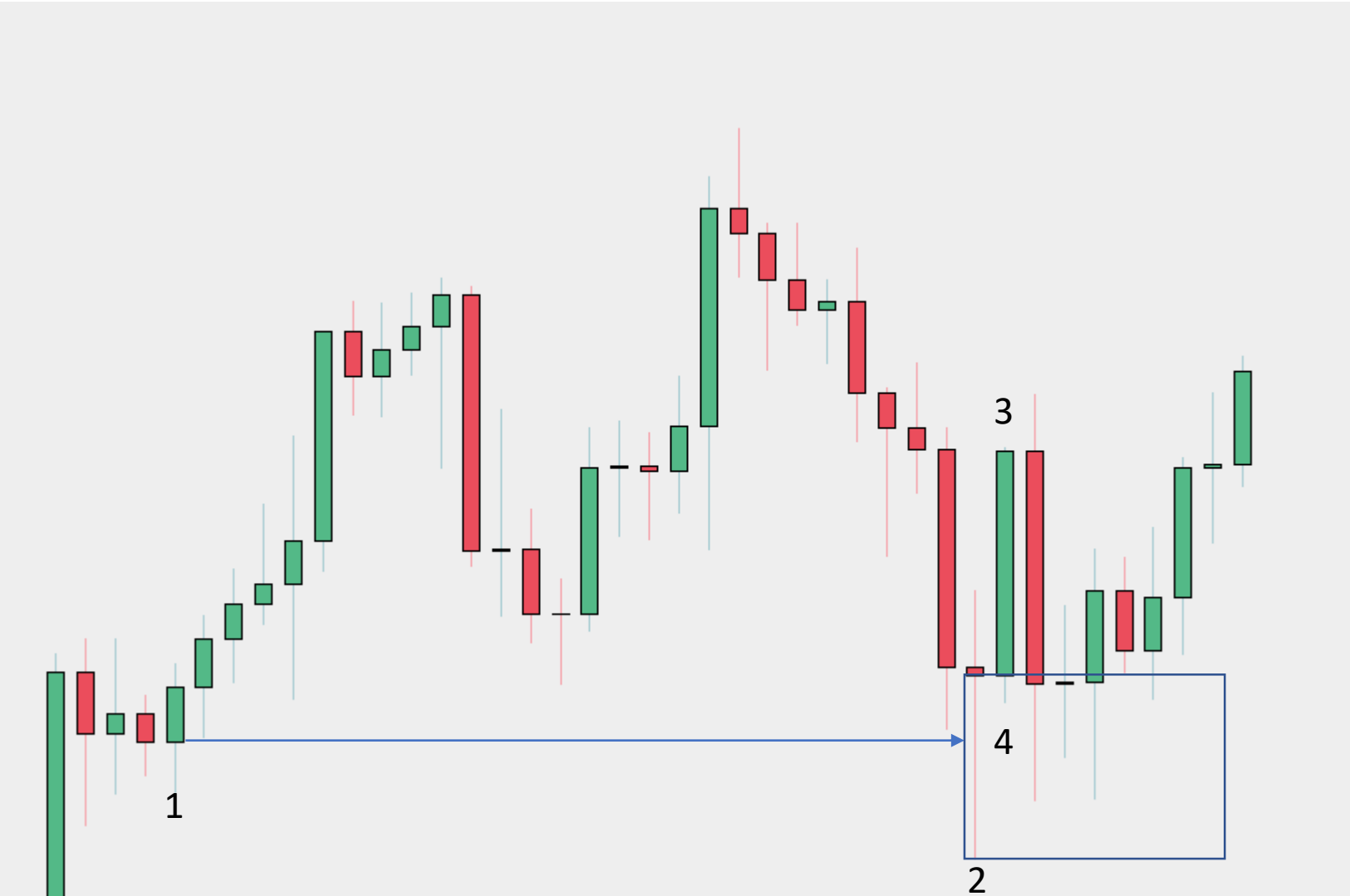


1. A LOW
2. Re-test of LOW as wick. Body is BEARISH so we can NOT confirm a HUNTER.
3. Next candle is bullish. We now take the wick on downside + the green body combined.

Compare with previous wicking candle body size. IF (3) lower wick + body is longer than previous wicking body bear. Then we have confirmed it as a signal. And we can now plot an arrow UP for this timeframe.



## BUY HUNTER SETUP (Re-Test Alert)



4. If price comes back into HUNTER zone after being confirmed. And all TF's chosen are in agreement. Then we send an re-test alert.

SO if the price re-visit the box (Hunter candles wick) and all Timeframes (TF's) chosen are in agreement. Then we alert for possible re-entry.