

EA Concept

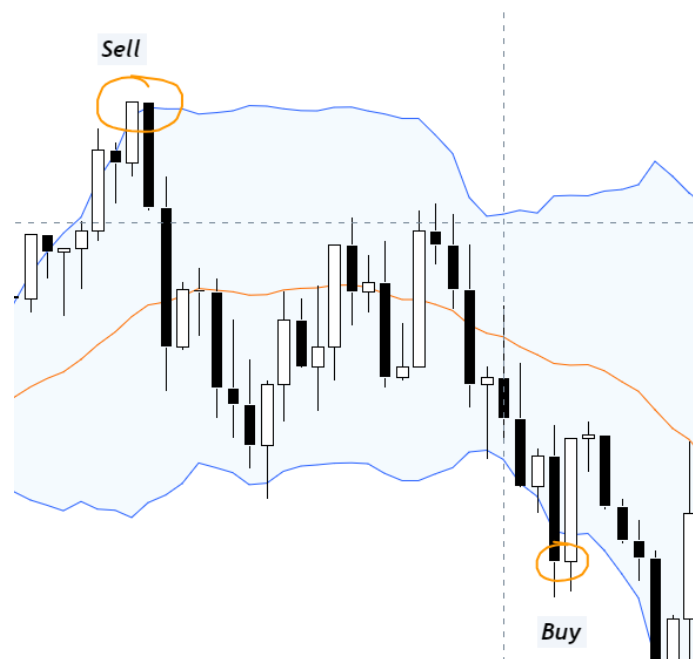
It's a Martingale EA that is based on Bollinger Bands for the first entry.

Entry Criteria for the first entry:

The Entry Criteria for the first trade should be a breakout of the Bollinger Bands Indicator. The candle should close Above/Below the Upper/Lower Band. The current timeframe is being used for that.

If the price breaks out of the Lower Band, the EA opens a Buy position. If the price breaks out of the Upper Band, the EA opens a Sell position.

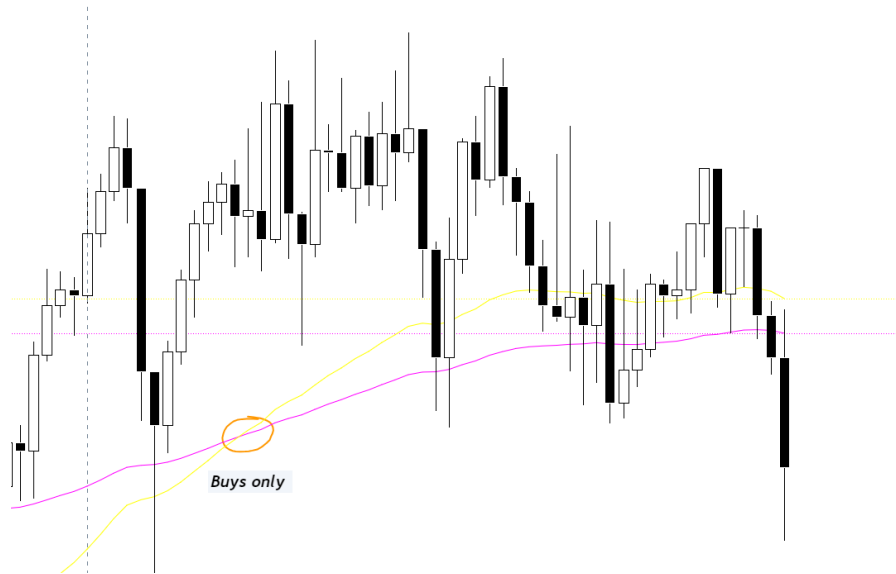
The parameters of the Bollinger Bands should be adjustable in the settings.



There should also be a trend filter function for the first entry, that can be turned on and off in the settings. For the trend filter, we are using two EMA's, the parameters of the EMA's should be also adjustable in the settings.

If the Short EMA is crossing above the Long EMA, the EA should only open buy order cycles, and if the Short EMA is crossing below the Long EMA, the EA should only open sell order cycles.

For the trend filter, we are using the higher timeframes as confirmation. It should be adjustable in the settings of what timeframes we want to use for the trend filter. (Up to 3 timeframes)



Those are our rules for the first entry, the other entries are determined by our martingale settings.

Other Settings:

Here are all the other settings, functions, and parameters I want to include.

- Detailed Time Scheduler (From Monday to Sunday)
- Comment
- Magic Number
- Max Spread (In Pips)
- Starting Lot size
- Lot Multiplier
- Take Profit (In Pips)
- Martingale Stepsize (In Pips)
- (I also want to have different Stepsize Methods)
 - Fixed Stepsize (Stepsize remains the same on all positions)
 - Increasing Stepsize (Stepsize will be increased by a determined factor by every trade) - should be adjustable in the settings
 - Individual Stepsize (Stepsize Sequence will be determined individually, for example, "1,1,2,2,3,3,4,4,5,5,10,10,15,15, etc. pp")
- Entry Mode (I want to have a function, where I can decide if the next order will be opened directly when the martingale step requirement is met, or if the EA will wait for the candle close as well before it takes a new position)
- Max Lot (Max Lotsize that can be opened on a position)
- SL Function (A function that will place a specific SL in Pips for every trade that is being opened. Can be turned on and off)
- Auto Breakeven + Trailing Stop Function

- A dashboard panel that shows the following (The visuals of the panel should be adjustable):
 - Name of the EA
 - Brokers Time
 - Floating P&L in %
 - Daily P&L in %
 - Max Floating Daily Drawdown in %
 - Weekly Profit in %
- Close All Orders Button
- Equity Stop Protection in % (If the account is in a specific % in drawdown, all orders should be closed + auto trading has to be disabled or the EA has to be removed from the chart)
- Close orders at price level (If the market comes to a specific price level, all orders should be closed + auto trading should be disabled or the EA should be removed from the chart. There should be one price level below the current price and one price level above the current price.)
- Advanced Security Features
 - Expiry Date
 - EA linked to account number
 - Advanced Security Functions that the EA cannot be stolen, shared and decompiled (maybe you have some ideas that we could implement)