

EMAs & DPO CROSSING STRATEGY

Strategy is based on crosses of exponential moving averages 12 and 40 with confluence based on DPO.

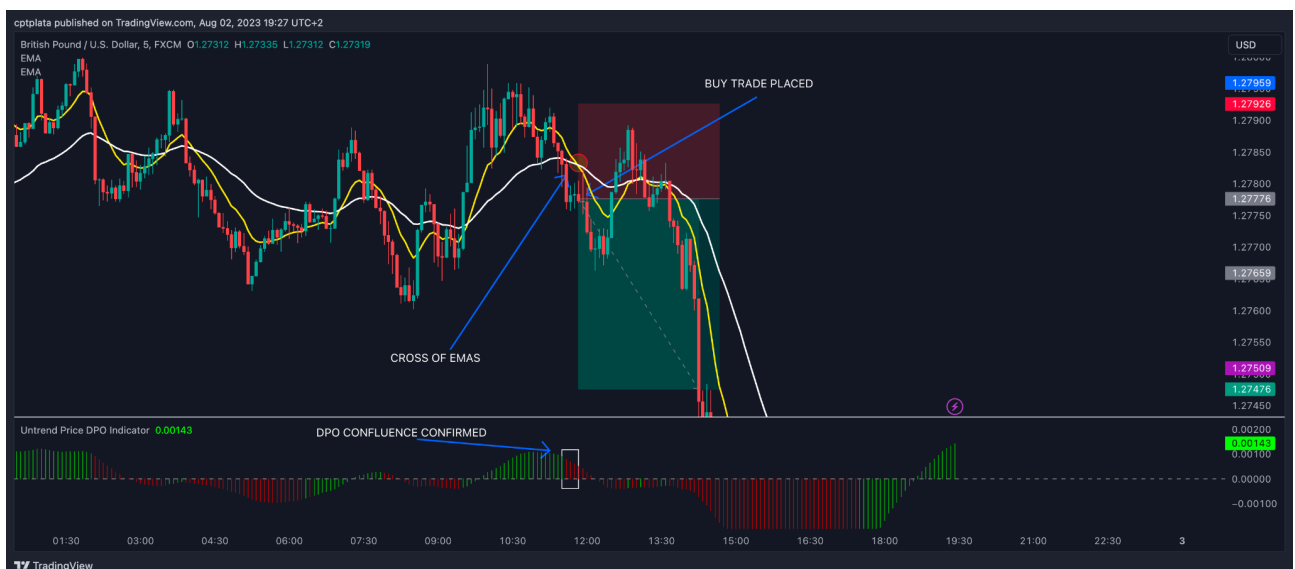
INDICATORS

- EMA 40 (White, length 40, source close, TF chart)
- EMA 12 (Yellow, length 12, source close, TF chart)
- DPO (UNTREND PRICE DPO INDICATOR) - mq4 source code available.

BUY TRADE : 12 Period EMA crosses the 40 period EMA from the bottom & 2 or more green candles on DPO hist. going in the trade direction (smaller candles under DPO 0 level or bigger candles above DPO 0 level)



SELL TRADE : 12 Period EMA crosses the 40 period EMA from the top & 2 or more red candles on DPO hist. in the trade direction (bigger candles under DPO 0 level or smaller candles above DPO 0 level)



INPUTS & FEATURES

- **MA_1** (default = 12) — the period for the first moving average.
- **MA_2** (default = 40) — the period for the second moving average.
- **MA_Method** (default = MODE_EMA) — the method of moving average calculation.
- **MinDiff** (default = 1) — the minimum difference between the MAs for a crossover to count.
- **DPO Period** (default = 21) - the period of the Untrend Price DPO indicator
- **StopLoss** (default = 0) — the stop-loss distance in pips. Set to zero to disable.
- **TakeProfit** (default = 0) — the take-profit distance in pips. Set to zero to disable.
- **TrailingStop** (default = 0) — the trailing stop value in pips. Set to zero to disable.
- **Lots** (default = 0.1) — the volume for trades.
- **Direction** (default = Both) — the direction of the position opened to trade the news. Can be of the following 3 types:
 - Buy — a buy position.
 - Sell — a sell position.
 - Both — both buy and sell positions.
- **Reverse Mode** — Set trade at the opposite direction
- **Limit Trading Hours** (default = Yes) — activate trading hours or not
- **Trading Start Hours** (default = 6) — from 0 to 24 Broker time
- **Trading End Hours** (default = 20) — from 0 to 24 Broker time
- **Equity Profit Target** — Equity maximum to stop the EA
- **Equity Protection** — Equity limit to stop the EA
- **Magic Number** (default = 97191)
- **Slippage** (default = 5)
- **Max Spread** (default = 100)

EXPECTED PERFORMANCE

The expected operation in a buy trade is as follows.

- When a candle closing :
 1. If closing time is within trading days/hours, then next.
 2. If 12 Period EMA crosses the 40 period EMA from the bottom, then next.
 3. If 2 or more green candles are on DPO and going in the trade direction (buy), then place trade.
 - a. TP & SL = User inputs in EA settings
 4. If no 2 or more green candles are on DPO and going in the trade direction (buy), then End.

Nota : The procedure for SELL trades is the reverse of that for BUY trades.

COMMENTS

Extra confluence : crossing of DPO value (from negative to positive after crossing of EMAs).

Strategy can be applied on every timeframes

Based on : <https://youtu.be/npABM6cwV70>

Revisions can be requested to add features or changes in case of improvements/evolutions.