

## **Strategy summary: Price action 5 min chart.**

### **Applicable to all symbols.**

Detect trend (minimum number of candles).

Wait for two pullbacks (opposite trend) (minimum number of candles).

Signal candle.

Confirmation candle in two min chart.

SL just below signal candle.

TP of 3/2 times SL, depending on next confirmations.

### **Confirmation:**

After signal, 2 min chart.

Resistance and supports are checked in 15 minutes chart. If TP is outside, it is reduced to 2.5. If not, to 2 times. If not, trade is not opened.

Forecasted Price in 3 charts (5/15/30) should be cut by TP level. If not, it is reduced at 2.5 times. If not, 2 times. If not, trade is not opened.

### **Indicators:**

5 periods simple average.

Supports and resistance: dark support resistance mt5.

Forecasted Price: MetaForecast mt5.

### **Money management:**

User introduces maximum amount to lose in any individual trade.

SL below signal candle.

EA calculates, based on SL level, maximum number of lots.

Trailing break even option: user indicates distance and profit in terms of % TP.

No more than one trade per symbol at a time.

### **User options:**

Change info in the three indicators.

Change levels of trailing break even option.

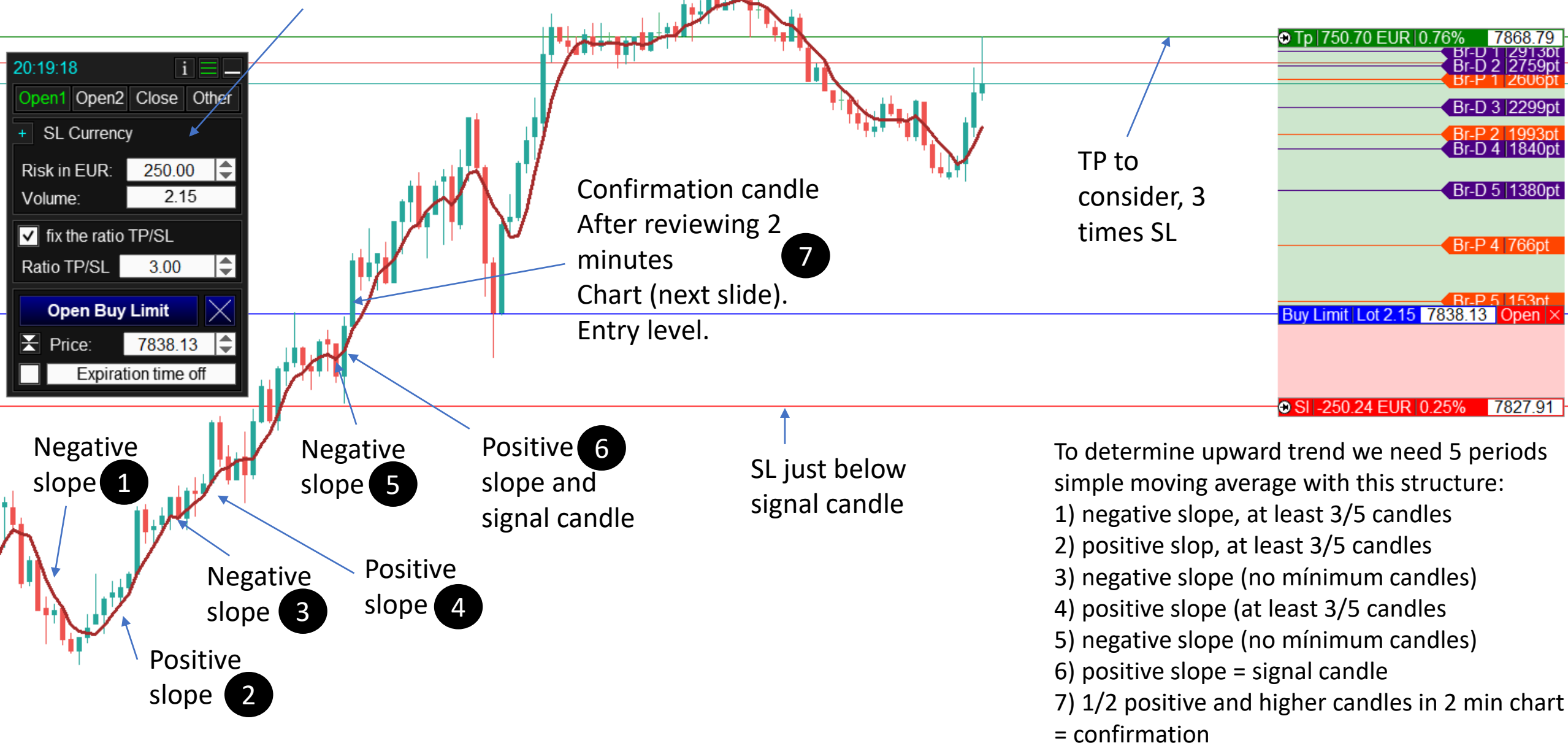
Euros to lose per trade.

Buy and sell trades, or only buy, or only sell.

Number of pullbacks (negative slopes) until signal candle: one, two, or three.

Risk in euro per trade.  
Depending on SL, volumen is calculated.

5 minutes chart



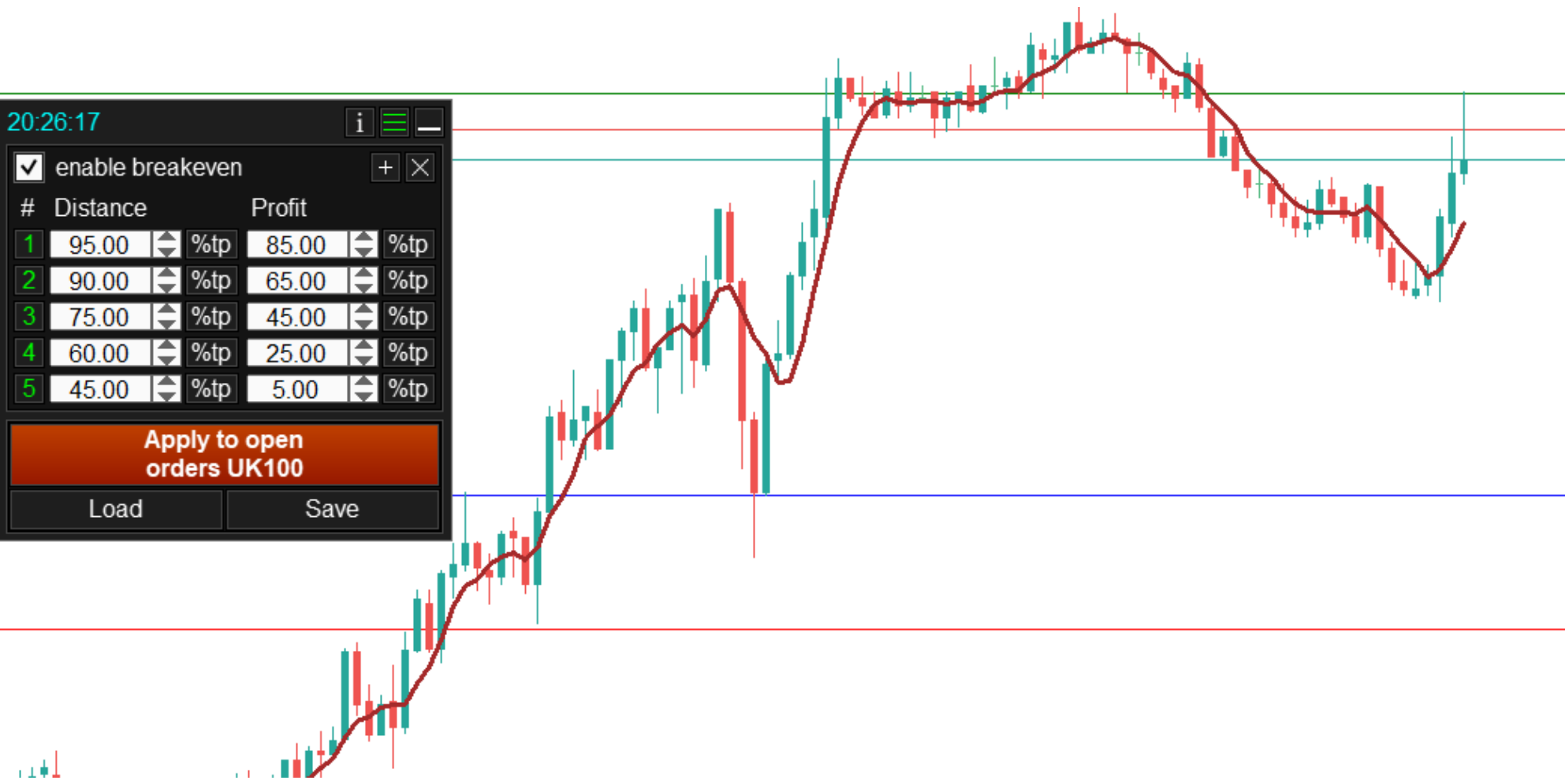
20:26:17

☒ enable breakeven

#	Distance		Profit	
1	95.00	%tp	85.00	%tp
2	90.00	%tp	65.00	%tp
3	75.00	%tp	45.00	%tp
4	60.00	%tp	25.00	%tp
5	45.00	%tp	5.00	%tp

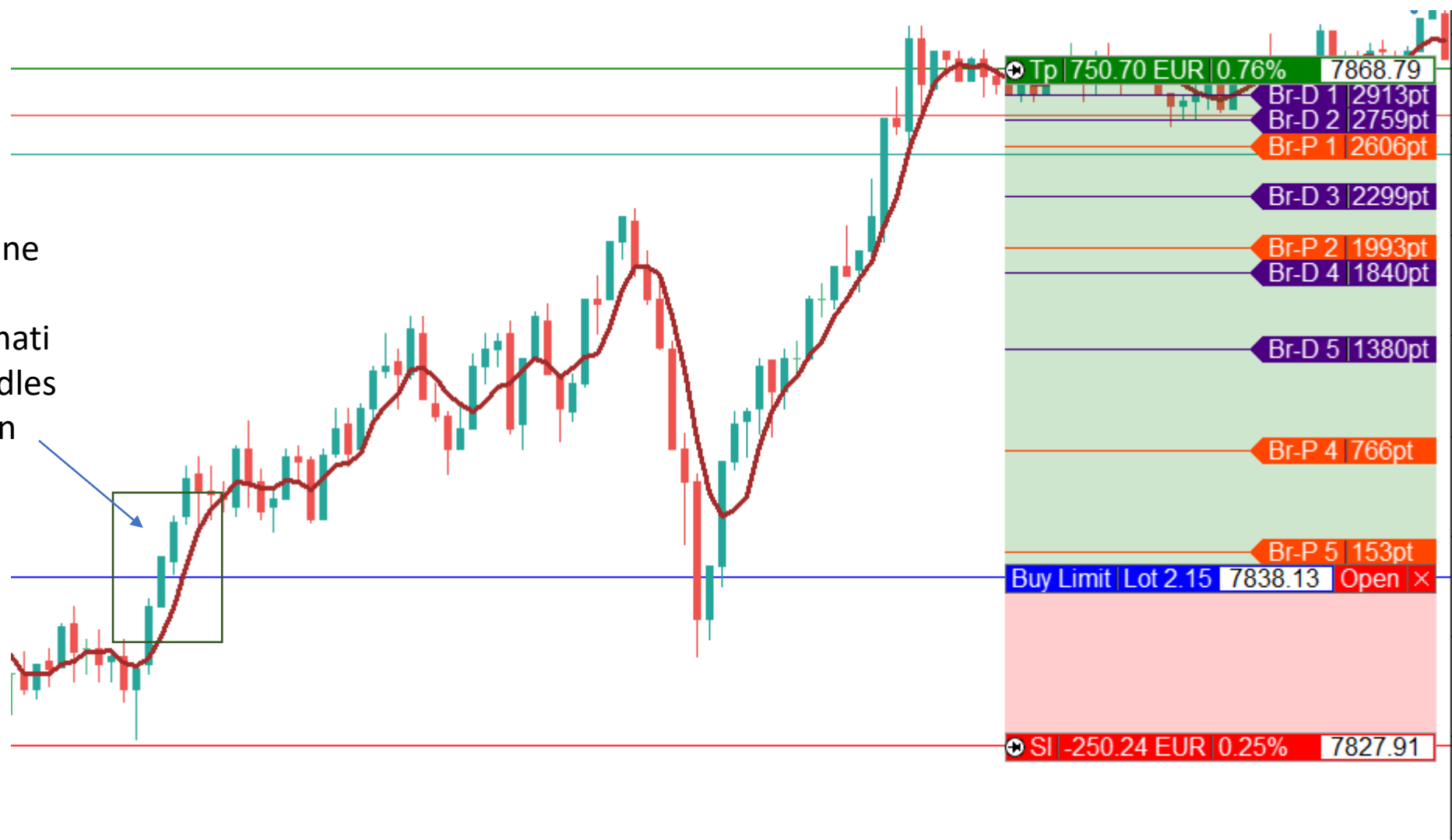
Apply to open orders UK100

LoadSave

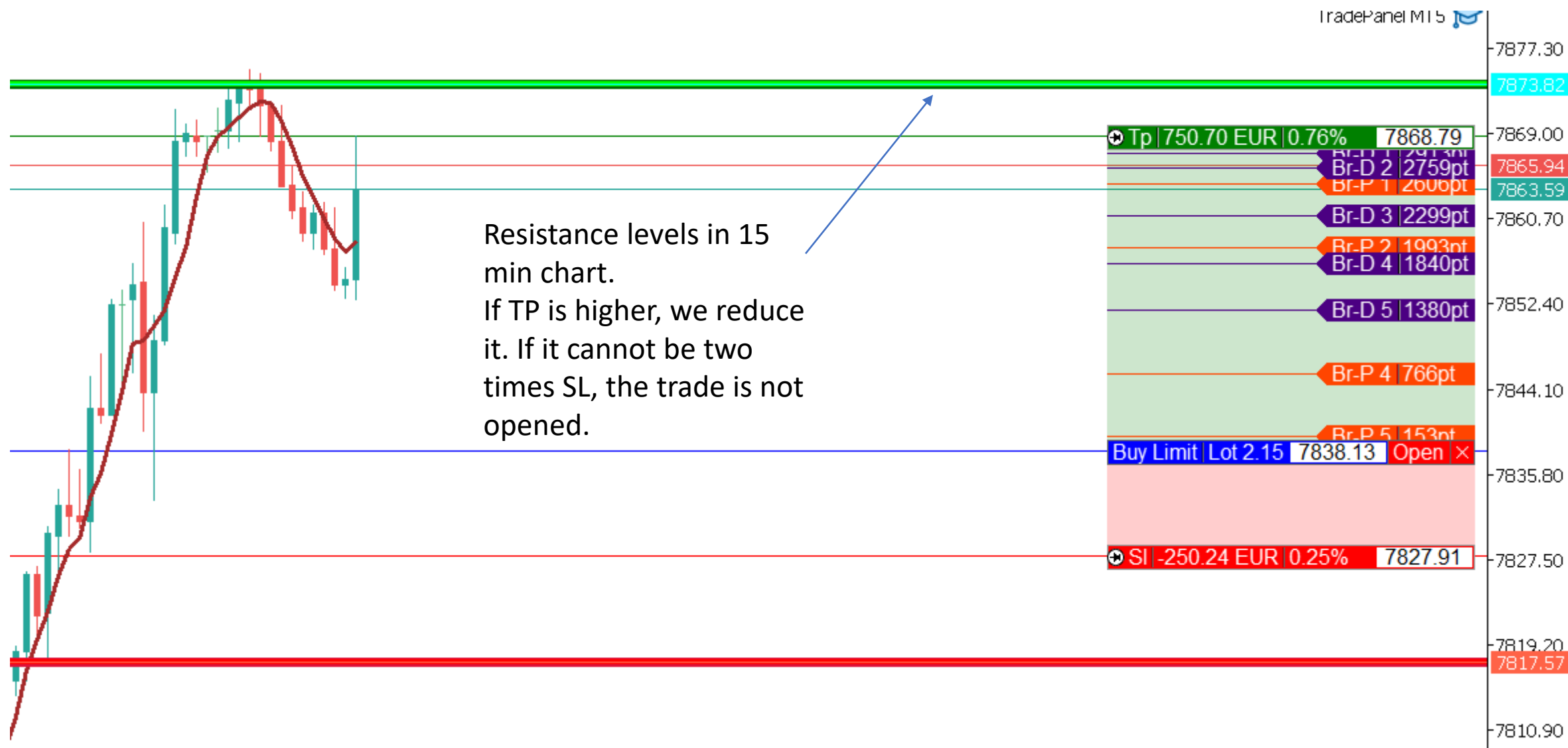


➔	Tp	750.68 EUR	0.76%	7868.67
	Br-D 1	2913pt	7867.14	
	Br-D 2	2759pt	7865.60	
	Br-P 1	2606pt	7864.07	
	Br-D 3	2299pt	7861.00	
	Br-P 2	1993pt	7857.94	
	Br-D 4	1840pt	7856.41	
	Br-D 5	1380pt	7851.81	
	Br-P 4	766pt	7845.67	
	Br-P 5	153pt	7839.54	
	Buy Limit	Lot 2.15	7838.01	Open ✕
➔	Sl	-250.24 EUR	0.25%	7827.79

From one  
to two  
confirmati  
on candles  
in 2 min  
chart



Resistance levels in 15 min chart.  
If TP is higher, we reduce it. If it cannot be two times SL, the trade is not opened.

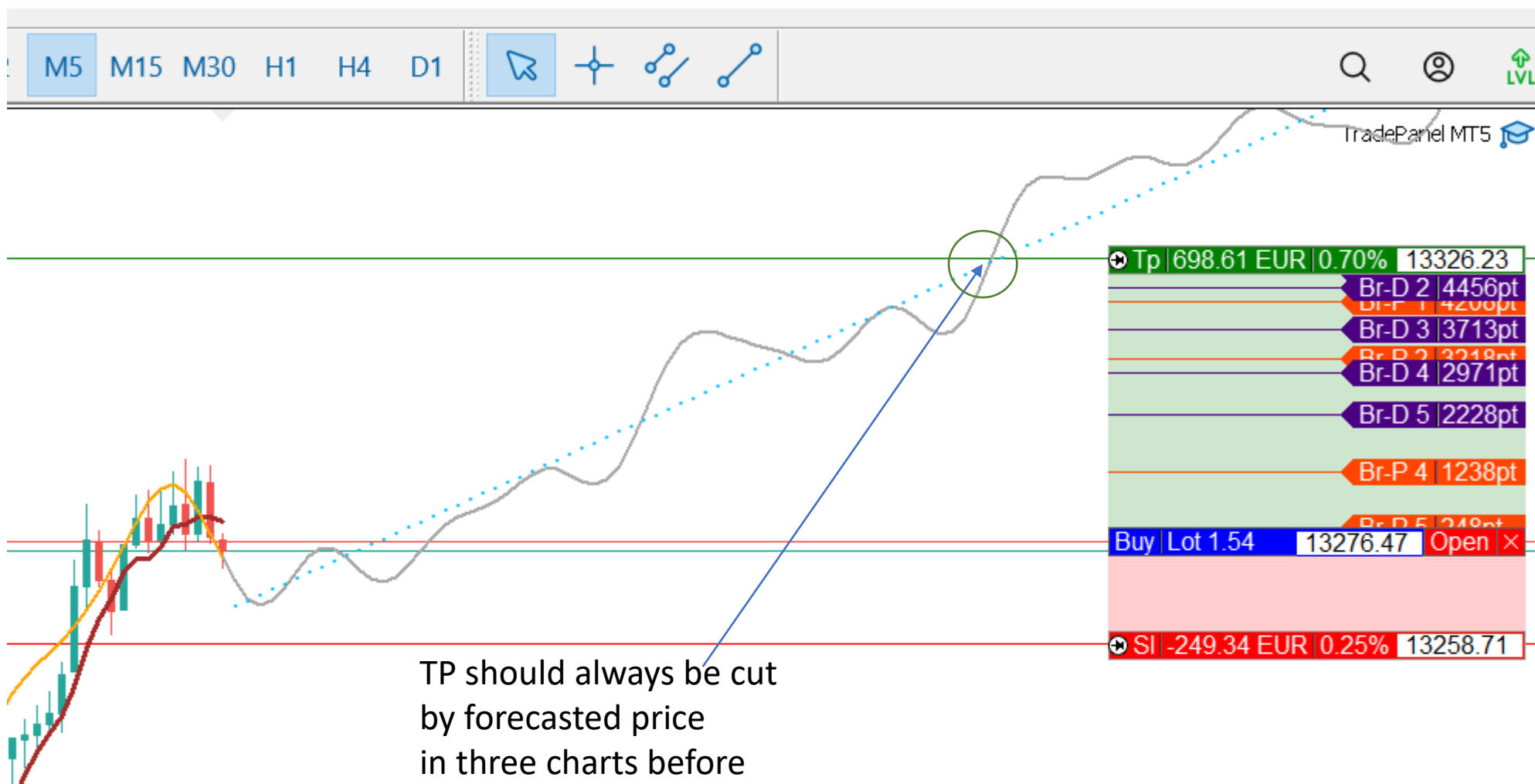


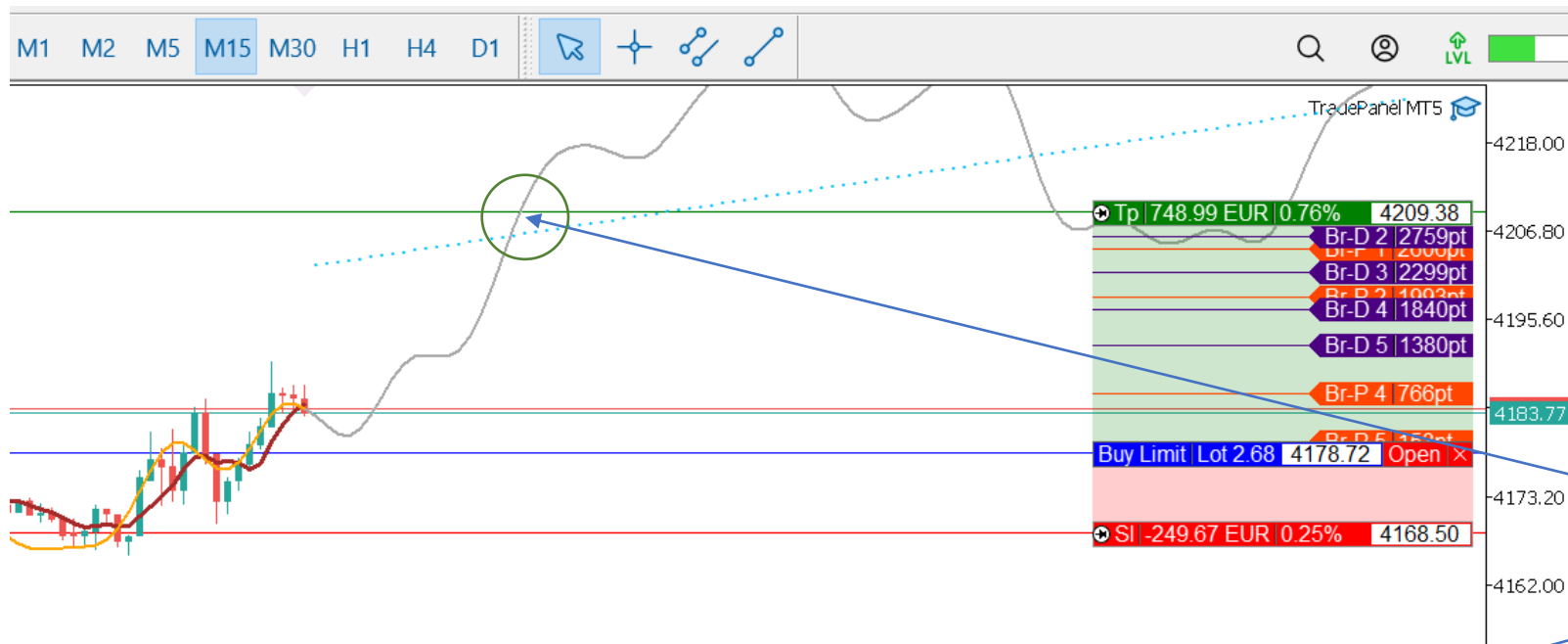
Ventana de Datos		✕
NDX100,M5		
Date	2023.05.01	
Time	22:30	
Open	13241.57	
High	13247.32	
Low	13235.94	
Close	13239.69	
Volume	0	
Tick Volume	572	
Spread	140	
MA(5)	13241.816	
R4	13522.18	
R3	13410.63	
R2	13322.79	
R1	13267.02	
S1	13167.32	
S2	13123.40	
S3	13011.85	
S4	12924.01	



Forecasted Price = future information below. It changes when dragging the mouse across the chart. The EA should be able to move steps to the right to read the direction of the forecasted price, and to check if TP is cut.







TP should always be cut by forecasted price in three charts before opening the trade:  
5 min, 15 min and 30 min.

