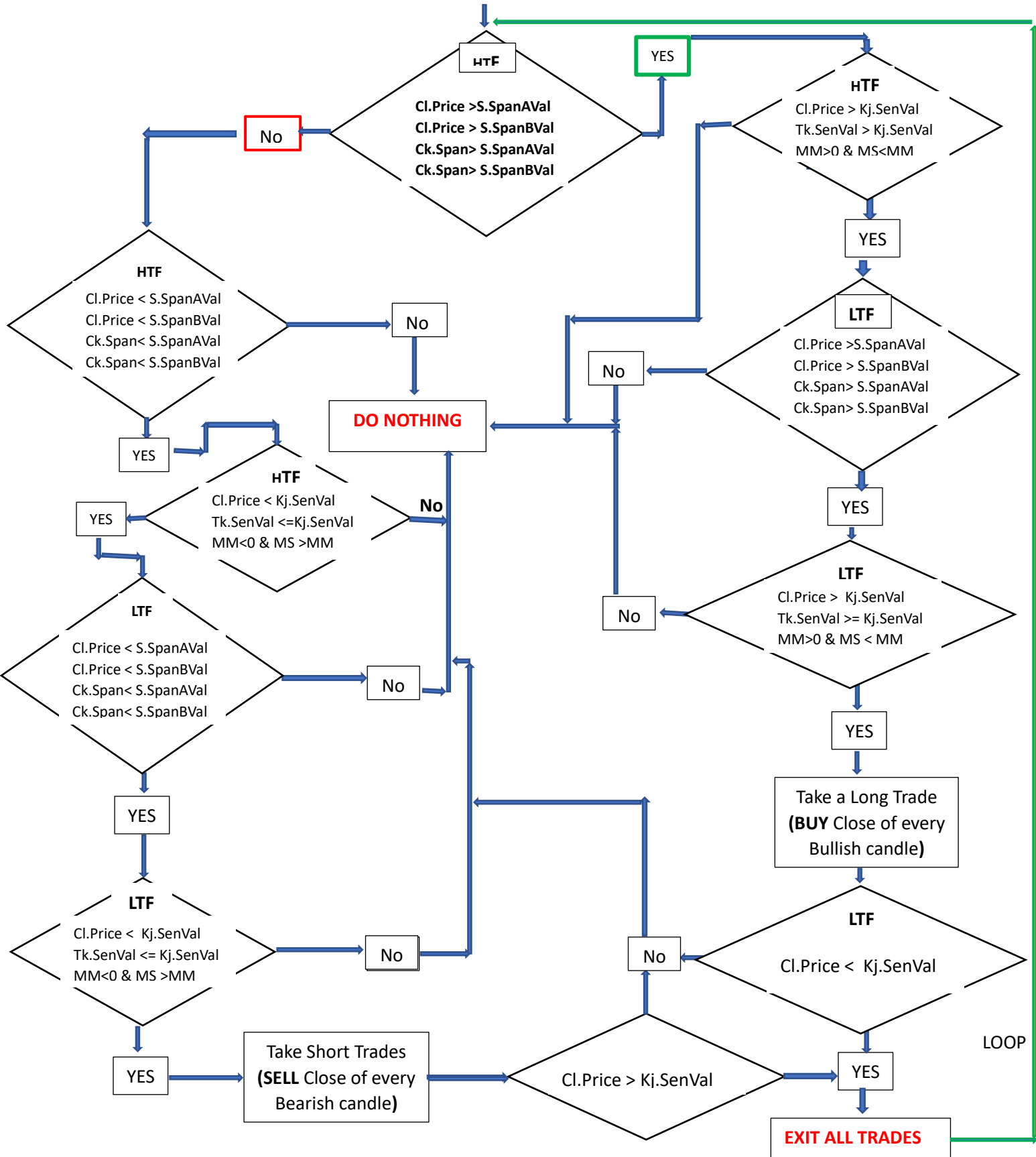
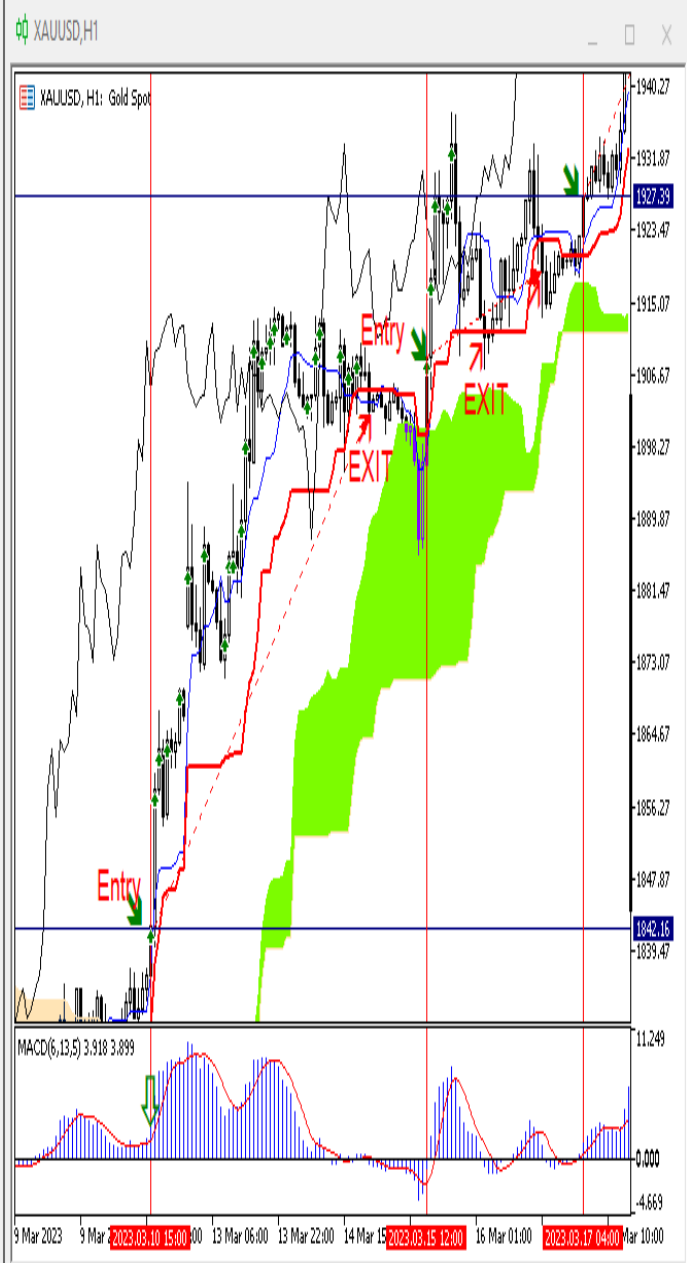


System Strategy Blueprint

S.SpanAVal MACD Main(MM)
 S.SpanBVal MACD Signal(MS)
 Ck.Span
 Kj.Sen Val
 Tk.SenVal
 Cl.Price
 Kj.Sen Val





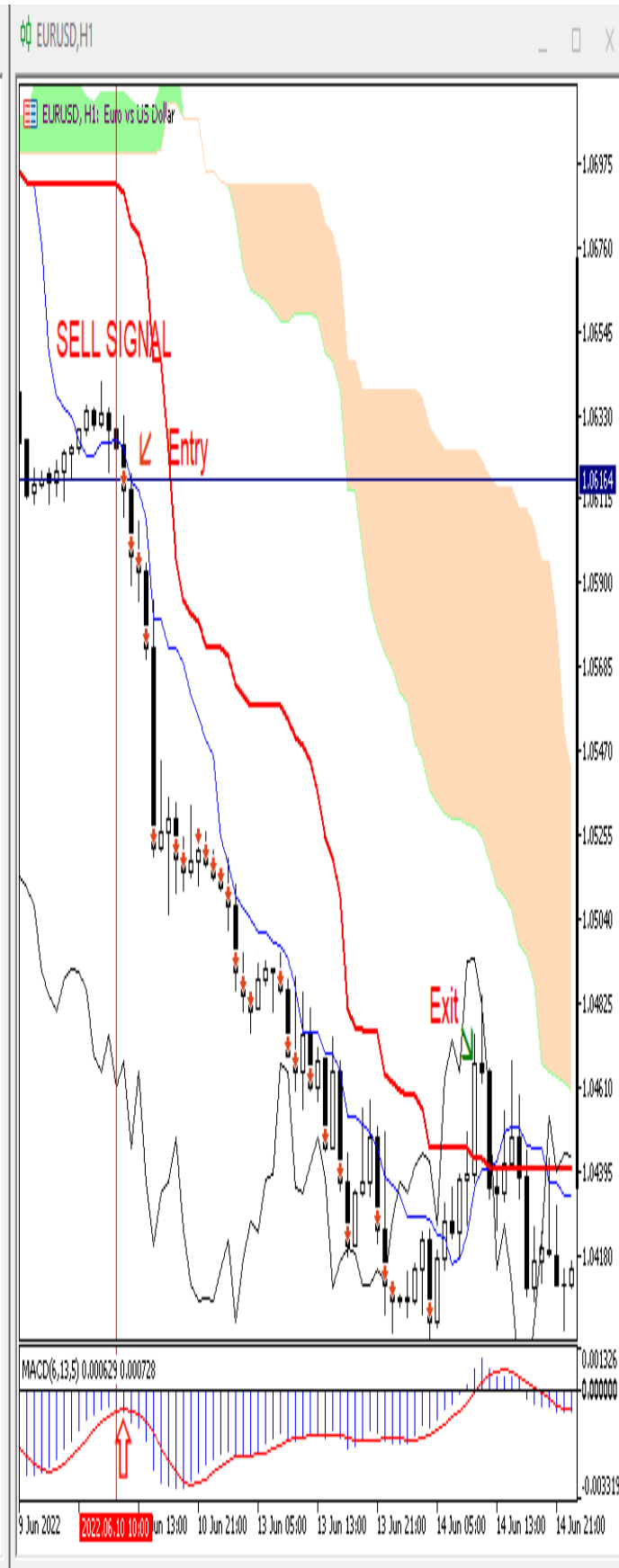
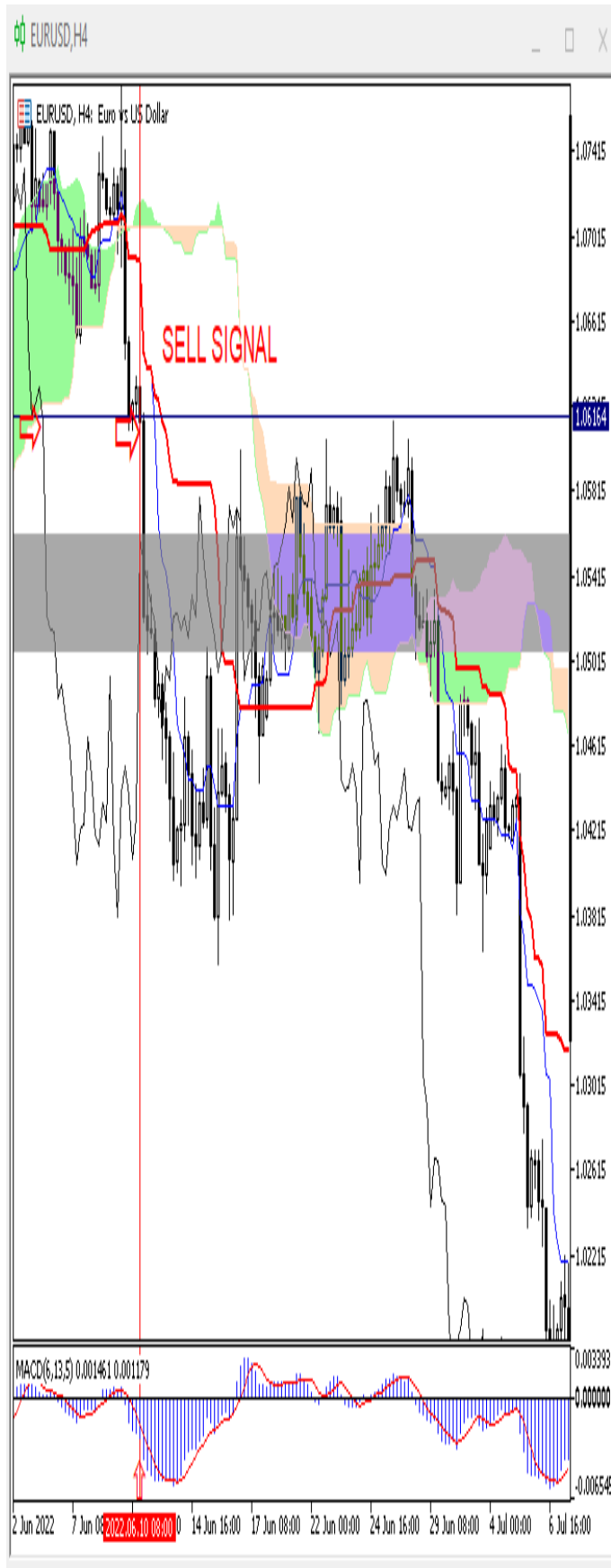
XAGUSD...

XAUUSD,H4 | XAGUSD,H4 | XAUUSD,H1

For Help press F1

Ichimoku Trades

1759 / 30 Kb



REQUIREMENT SPECIFICATION FOR THE ICHIMOKU EA

The required EA is expected to use all the major components of the Ichimoku Kinko Hyo.

Two Time frames are required to make a trade - ANY Higher TIME Frame (HTF) and a Lower Time Frame (LTF).

TRADE SETUP:

Trend Determination

FOR UPTREND:

HTF Price closes above the Kumo (SekouSpan A & B) + the lagging Span (Chikou Span) break above the Kumo.
Price closes above the Base Line (KijunSen) + Conversion line (TenkanSen) also equal to or above the base line
MACD Main (MM) ≥ 0 + MACD Signal(MS) $<$ MACD Main(MM)

FOR DOWNTREND

Price closes below the Kumo (SekouSpan A & B) + the lagging Span (Chikou Span) break below the Kumo.
Price closes below the Base Line (KijunSen) + Conversion line (TenkanSen) also equal to or below the base line
MACD Main (MM) ≤ 0 + MACD Signal (MS) $<$ MACD Main(MM)

Trading Signal

Buy

LTF Price closes above the Kumo (SekouSpan A & B) && the lagging Span (Chikou Span) break above the Kumo &&
Price closes above the Base Line (KijunSen) && Conversion line (TenkanSen) also equal to or above the base line
MACD Main(MM) ≥ 0 + MACD Signal(MS) $<$ MACD Main(MM)

Sell

LTF - Price closes below the Kumo + the lagging Span break below the Kumo.
Price closes below the Base Line + Conversion line equal or below the base line
MACD Main (MM) ≤ 0 + MACD Signal (MS) $>$ MACD Main (MM)
(All decision variables are based on current market condition)

ENTRY

Should be able to:

- A. Select and trade in any direction of choice i.e. Buy or Sell at any given period
- B. In whatever direction of Choice, choose either:
 1. *Single Position Entry*: Single Specified Lot size is traded after the setup.
 2. *i. Multiple Position Entry*: Constant specified lot size is opened at the close of each candle on the LTF in the direction of the trend after the setup i.e., Uptrend will buy close of every bullish candle and downtrend will Sell close of every bearish candle the specified lot size.
ii. No of trades per signal i.e., how many trades (for the specified lot size) should the EA open for every buy or sell signal at the close of a bullish or bearish candle?

EXIT

All trades are closed out upon:

The closure of current price below the Kijun-Sen or Base Line (For buy Trade(s)) on the LTF

The closure of current price above the Kijun-Sen or Base Line (For Sell Trade(s)) on the LTF

(The EA should be able to scan the market for similar trades and continue the trading in the relevant direction after each exit; as long as the trend remain)

Note:

Other Important Parameters

1. *I should be able to make selection of my two intended time frames on the parameter.*
2. *I want the EA to be able to trade more than one market at a time and provide for market selection.*
3. *There should be provision to:*
 - specify manual stop loss and take profit (in pips) for all trades (for global exit of all trades) and individual trades. (These are other options in addition to exiting trades through close of conversion line below or above the Base Line)*
 - *automatic stop loss via ATR.*
 - *Allow for trailing stop and breakeven behavior.*
4. *EA to allow for specification of:*
 - i. *choice of days to trade in a week and*
 - ii. *trading time within which to make trades.*
5. *EA should allow for specification of Max. permissible spreads (in pips) for any tradeable market.*
6. *A dashboard (that can be turned on and off) to show at a glance:*
 - i. *Current Time*
 - ii. *Expire Time (where trading time is specified)*
 - iii. *Total Open Trades*
 - iv. *Total Open Lot Size*
 - v. *Total P&L (Pips)*
 - vi. *Total P&L (\$)*
 - vii. *Spread*
 - viii. *Balance/Equity*
 - ix. *Current value of major variables such as TenkanSen, KijunSen, Chikou Span*