

EA name: EA Real Trader 2.0

Front Parameter Interface

Mt4 ID: (I can change in MQL source file)

TF Trend: (can choose from H1 to MN)

TF Entry: (can choose any TF)

RR Ratio: (can choose 1:1, 1:2, or 1:3)

Risk per entry: (percentage from amount Balance)

Lot Size: Based on Risk per Entry

SL (in Point) : (if put 100 point, SL level will be 100 point below/above Lower/Upper BB)

Indicator used

Setting Moving Average

- Period: 50
- Shift: 0
- Method: Exponential
- Apply to: Close

Setting Bollinger Bands

- Period: 20
- Deviation: 2.000
- Shift: 0
- Apply to: Close

Trade Condition

- This EA will use 2 timeframe to filter entry order.
- TF Trend: (I can change in Front Parameter)
- Entry TF: (I can change in Front Parameter)
- I can run in all pairs at the same time,
- 1 pair can only have 1 order at 1 time
- Only 1 entry per CS in TF Entry

Entry Order Conditions

1. Sell Order

Bid price must be below MA50 in TF Trend,

Bid Price touch the MA 50 line in TF Entry,

Open Price for that particular candlestick (TF Entry) must below MA50

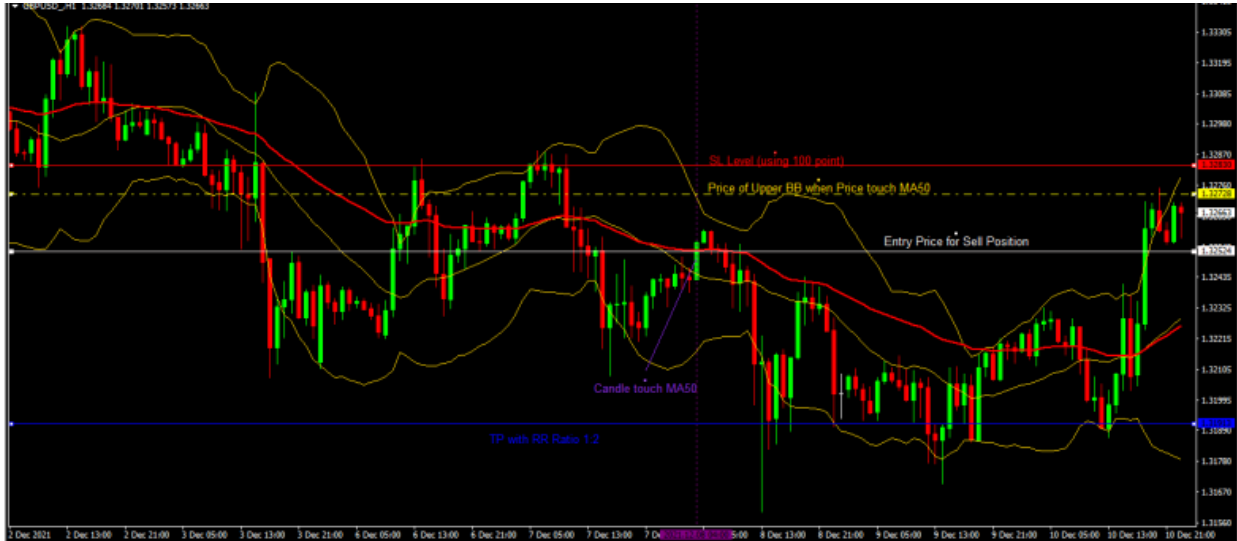
Lot size will be calculate based in distance between entry price to SL level

SL above Upper BB (Upper BB Price + SL Parameter)

TP will be calculate based on Risk Reward Ratio.

Example

TF Trend: H4, TF Entry: H1, RR Ratio: 1:2, Risk per entry: 1, SL (in Point): 100 , Balance 1000usd



Based on picture above, if Order hit SL, I will lose 10usd, but if hit TP, I will get 20usd.

2. Buy Order

- Bid price must be above MA50 in TF Trend,
- Bid Price touch the MA 50 line in TF Entry,
- Open Price for that particular candlestick (TF Entry) must above MA50
- Lot size will be calculate based in distance between entry price to SL level
- SL below Lower BB (Lower BB Price + SL Parameter)
- TP will be calculate based on Risk Reward Ratio.



Based on picture above, if Order hit SL, I will lose 10usd, but if hit TP, I will get 20usd