

Hello,

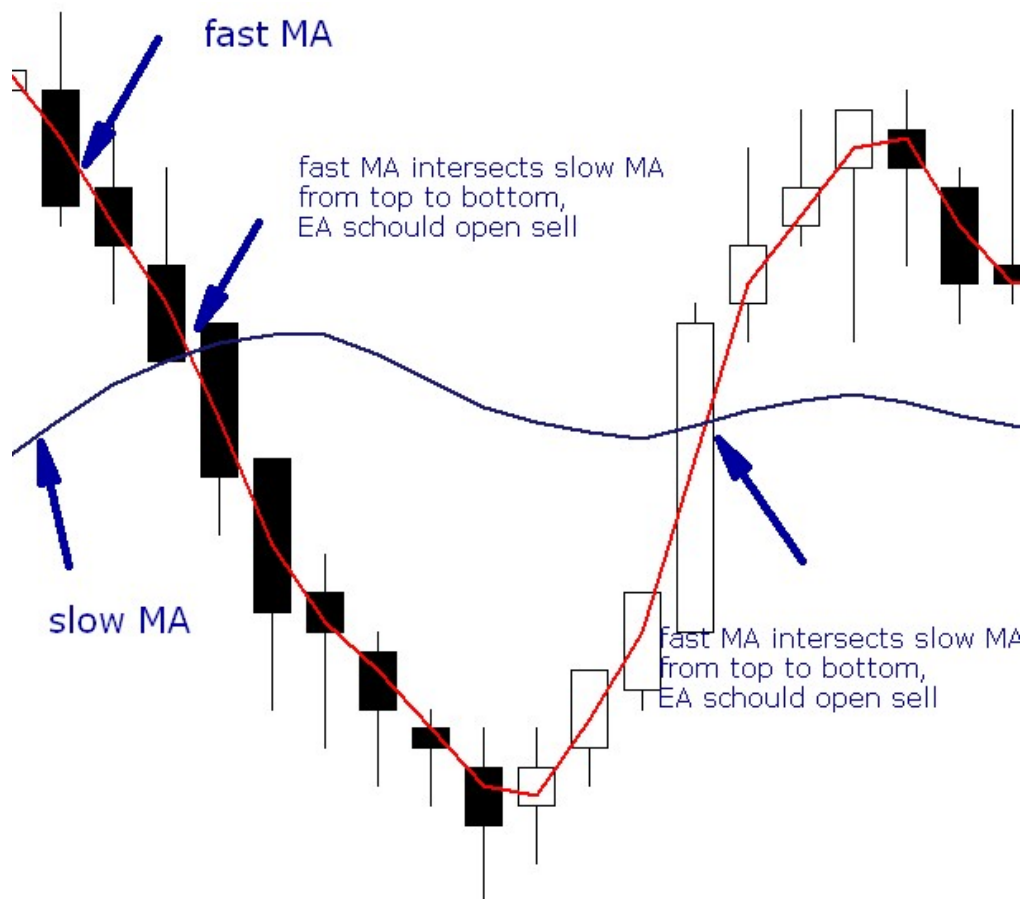
I write once again description. I think most functions are working well. But i have objections to reversal.

Principles:

We use two moving averages to trading. Fast and slow. First open is after intersection slow ma by fast ma on working candle. Working candle means candle which is not closed yet. For example. We use 5 minutes chart and now is 16.57.00. candle was opened at 16.55.00 and will be closed at 16.59.59. if on working candle fast ma will intersect slow ma then EA should open trade.

If fast ma intersects slow ma from top to bottom, then EA opens sell

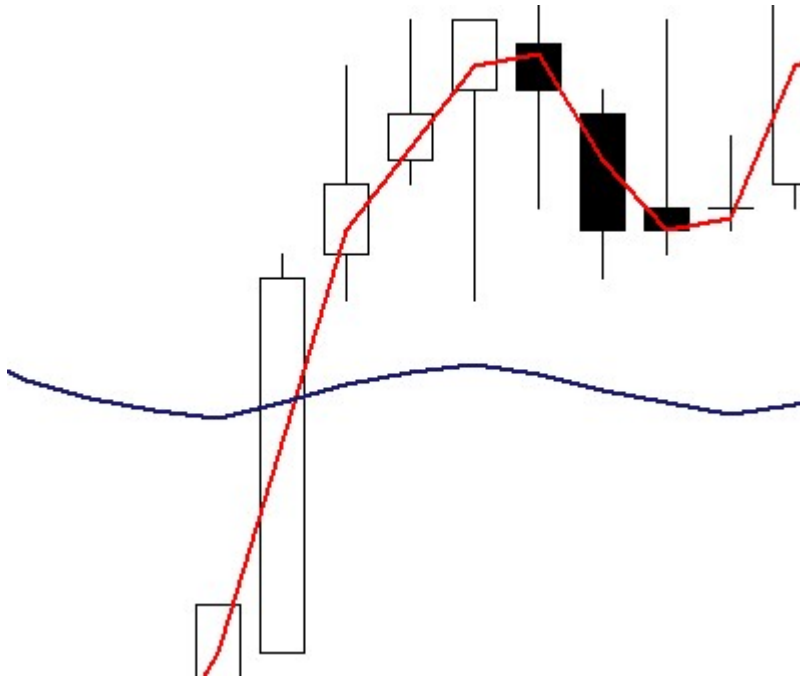
If fast ma intersects slow ma from bottom to top, then EA opens buy



At the first description I defined **X parameter**. In EA settings it called „Min Distance between MA's, points (0 - off)“

This parameter is used for opening trade and reversal trades. How does it work? If this parameter = 0, then it is turn off. This parameter means minimum distance between those MA's to open/reversal trade.

Example:



Fast MA (red line) intersects slow MA (blue line) from bottom to top, so EA should open buy. And X is minimum needed difference when fast MA is above blue MA. Example, $X = 10$, slow MA has value 1.10000, fast MA intersected slow MA on working candle and has value 1.10009, then EA will not open trade, because difference is less than 10 ($1.10009 - 1.10000$).

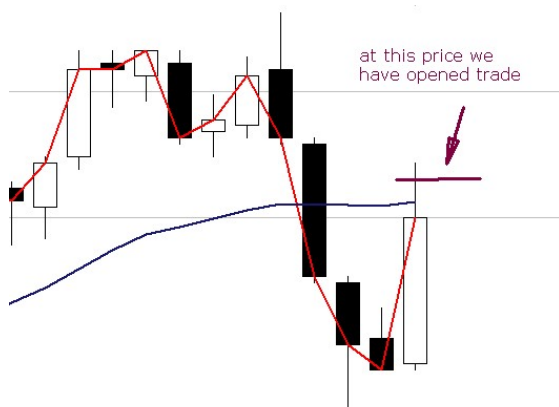
Example, $X = 14$, slow MA has value 1.10000, fast MA intersected slow MA on working candle and has value 1.10015, then EA will open trade, because difference is more than 14 ($1.10015 - 1.10000$).

So (for this case – buy),

EA will open trade if $X=0$, when fast MA is above slow MA. If fast MA is equal slow MA there is no trade,

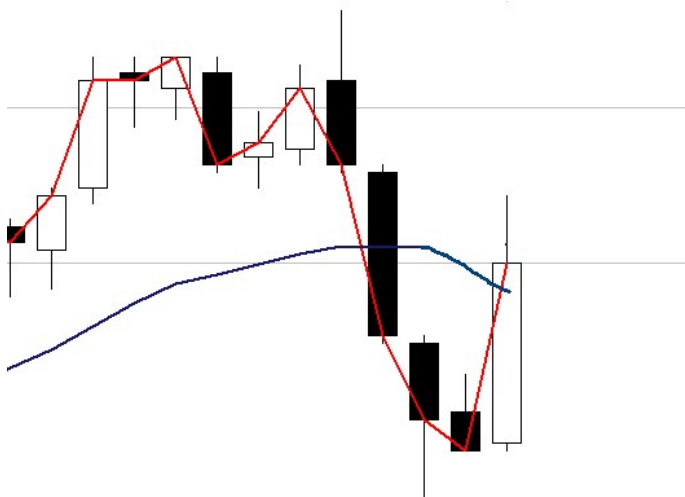
EA will open trade if X has any value when fast MA is above slow MA more than this value, if less or equal there is no trade.

Reversal

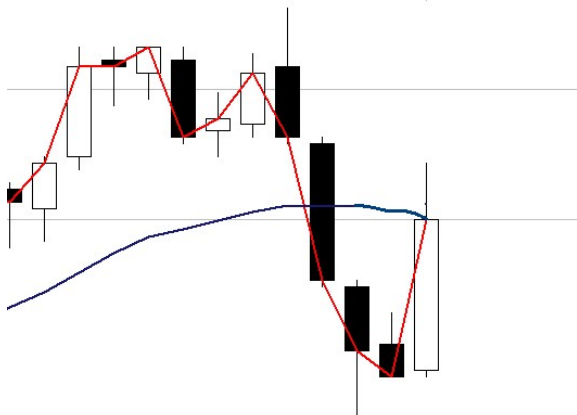


There are 3 possible behaviors of the averages at the close of the candle after the opening of the first trade.

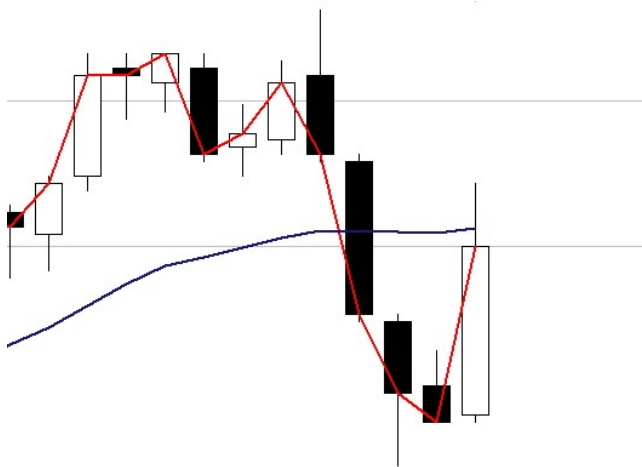
1. The faster average stays above the slower average (the intersection is visible),



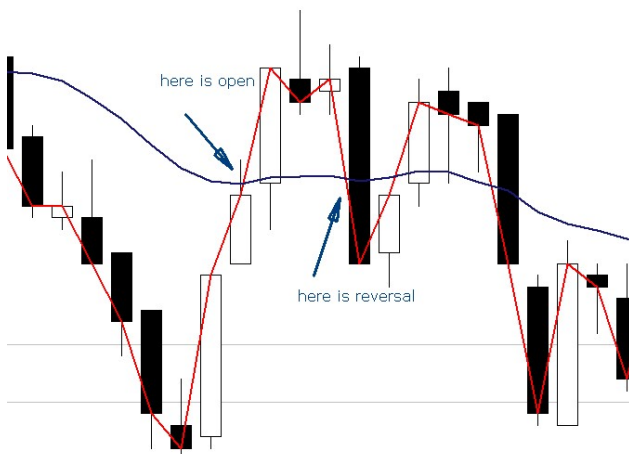
2. the faster average is equal to the slower average (sa averages are at the same level),



3. the faster average comes back under the slower average (the intersection of the averages disappears)



If we have 3rd case then we reversal position. If there was opened buy, we close buy and open sell
And reversal will be also for that case:



This is a case when direction was changed.

We have to use X for this. This means than difference to reversal position must be more than X.

FrequencyOfChecks

Propbly this function is working well.

This function start working after open trade. It checks in settng interval if MA'a are still crossing.

Example

we open a buy order. and this is what the first picture with averages tells about. for example, an order was opened at 10.40.13

After opening the order, we start to check the position of the averages in relation to each other. this check takes place every given interval. ie by the interval that is set in the time frame in the settings. in this case it is 1 minute. that is, every minute we check whether the intersection on the basis of which the order was opened is still there or not.

at 10.41.00 we check if this intersection with 10.40.13 is still there. if so, we do not take any action

at 10.42.00 we check if this intersection with 10.40.13 is still there. if so, we do not take any action.

At 10:43 AM we found that the fast average is below the slower average. and if this is the case, then ea is to reverse the order, i.e. it is to close this buy order and open a sell order.

We can use here any interval available on the platform. Interval is used here is independent from chart interval. Those are two different things.

frequencyOfChecks and reversal must be using together

At the moment:

1. probably reversal is not working correct.
2. Magic number is not working correct. On one chart EA is working almost correct but on two charts with different magic numbers EA is not working correct
3. Please, add to the chart information what time will be next checking of MA's intersection. This allow me fasret check whether al lis working correct.