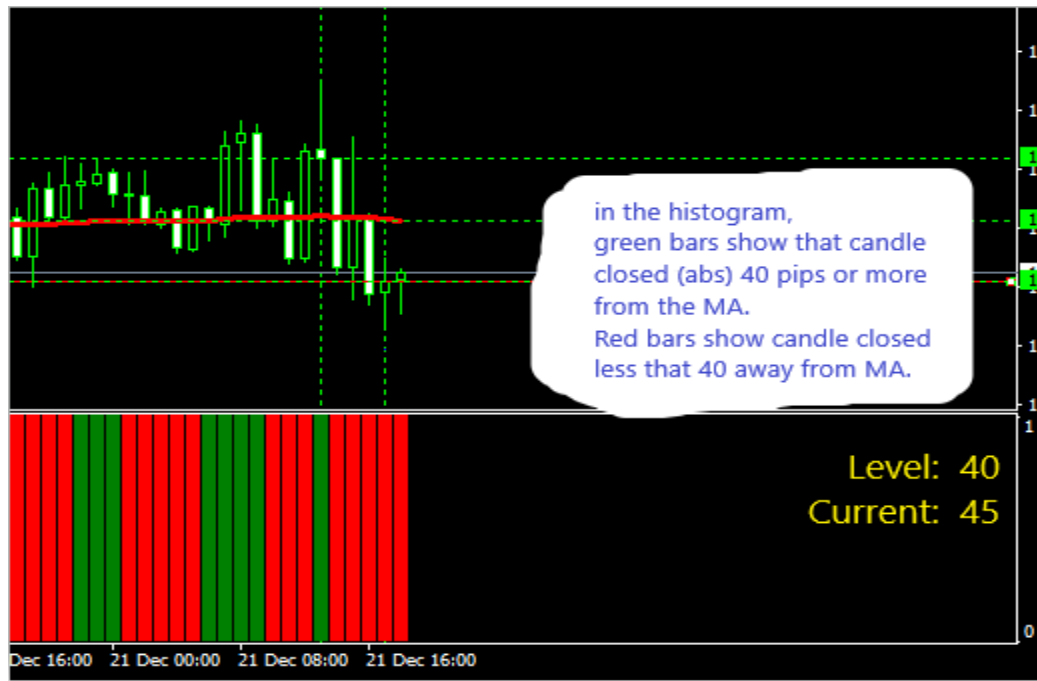


Create: MA Distance from Close

1. At candle closure, indicator will calculate the pips from closure to the MA.
2. Indicator will plot that value on a line graph in an Indicator Window beneath the chart.
3. Distance will be an absolute value: No negative distance will be plotted.
4. All MA properties as shown below will be specified within the indicator properties.
5. Indicator will have line parameters for color, style, thickness.
6. Indicator will have the standard "level" lines, bar color, bar thickness. to be set by user.
7. Indicator will have option to set "fixed minimum and Fixed maximum as per screen shot, below.
8. Indicator will print the absolute value (plotted value) of the current distance in large print on the right side of the indicator window.
9. Indicator will print the value of the level line used to determine red or green bars in the indicator.

Note: the indicator in this picture is not to scale and is not depicting the numbers in this dialog.  
This is only to illustrate the effect of the indicator.



Fixed minimum ☒ 0 Fixed maximum ☒ 1

Moving Average ? X

Parameters Levels Visualization

Period: 100 Shift: 0

MA method: Simple

Apply to: Close

Style: Red

OK Cancel Reset

