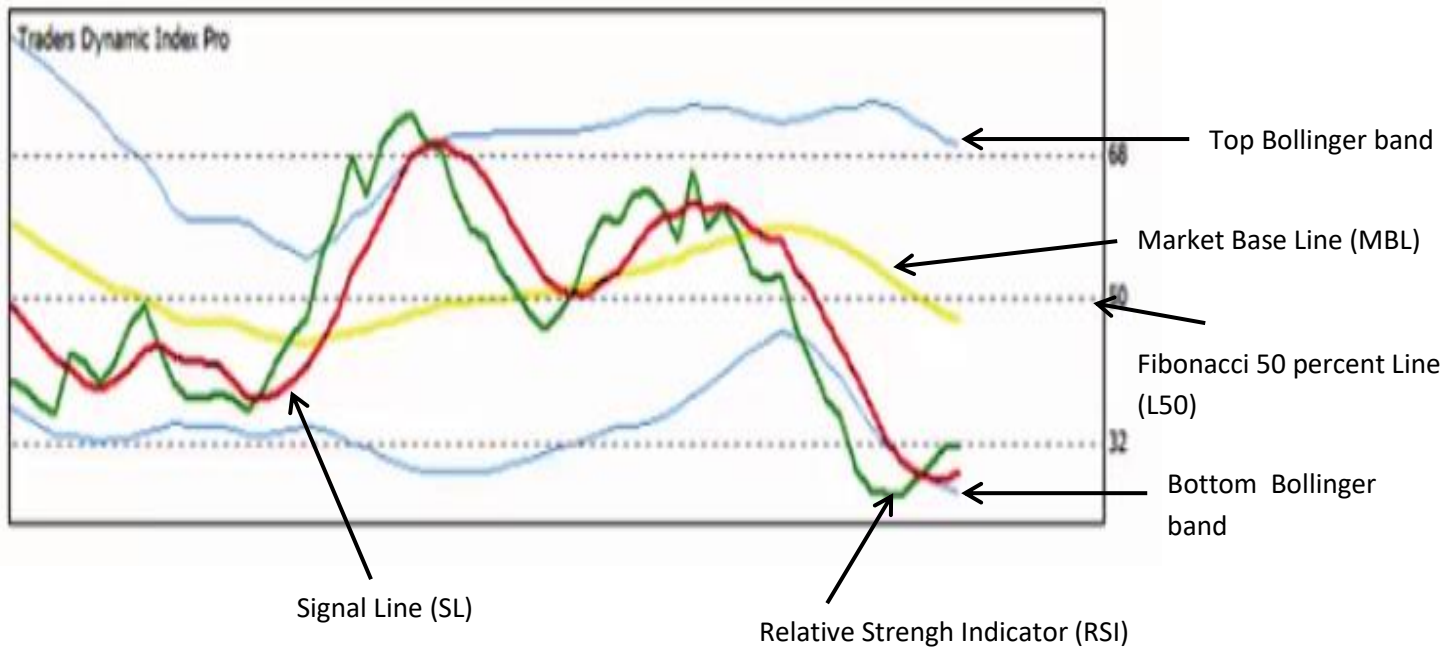


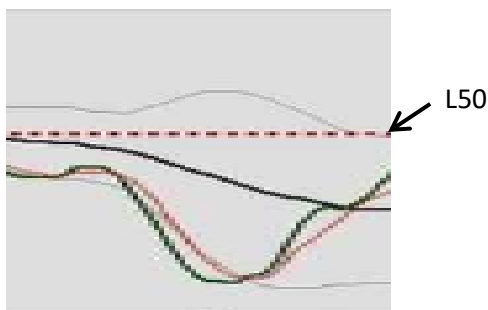
The Lines of the TDI



1- PHASES OF TDI : OVERs

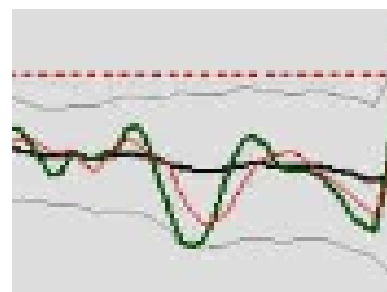
Oversell : when all (or most) elements of the TDI are below the L50

Note : the MBL must be below the L50



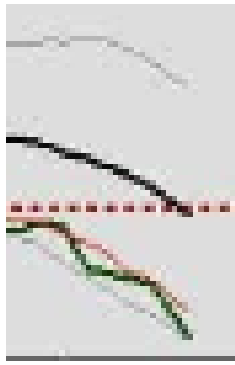
here, all the elements of the TDI are below the L50, except the upper bollinger band

or



here, all the elements of the TDI are below the L50
here, the majority of the elements of the TDI are below the L50, except the MBL and the upper band

Total oversell

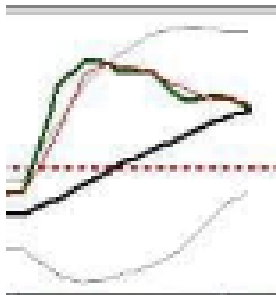


here, the majority of the elements of the TDI are below the L50, except the MBL and the upper bollinger band

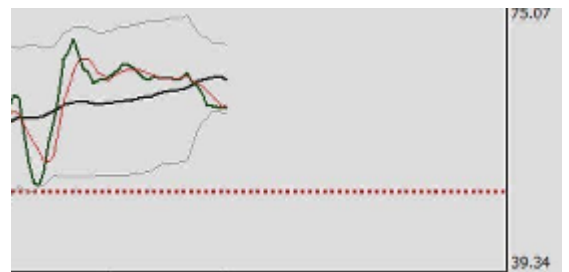
Partial oversell

Overbuy : when all (or most) elements of the TDI are above the L50

Note : the MBL must be above the L50



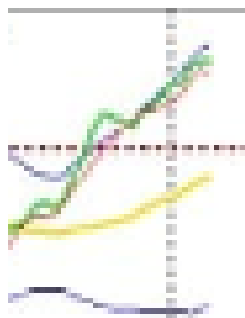
or



here, all the elements of the TDI are above the L50, except the lower bollinger band

here, all the elements of the TDI are above the L50

Total overbuy



here, the majority of the elements of the TDI are above the L50, except the MBL and the lower band

Partial overbuy

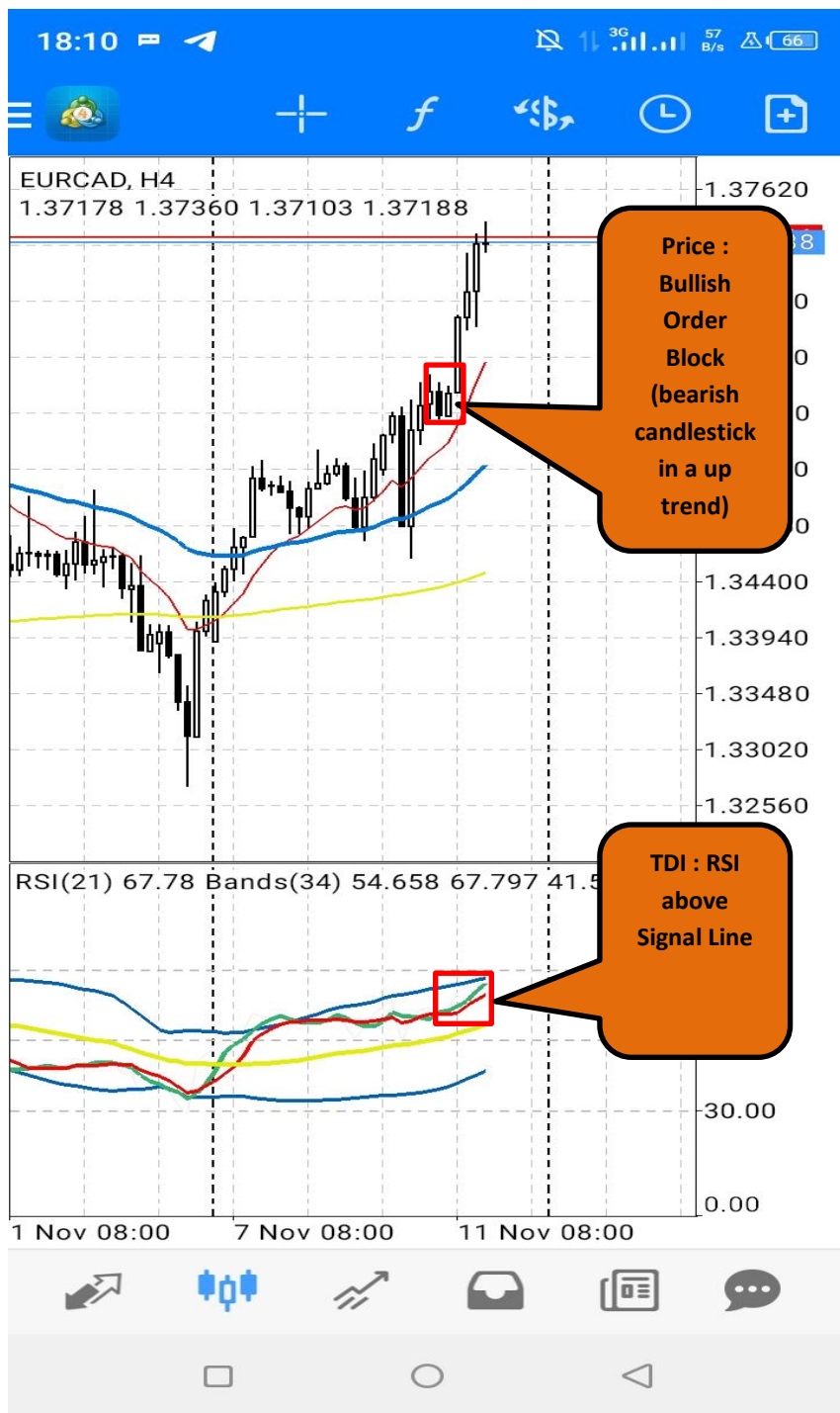
2- WHAT I'M WAITING

I need an indicator that will tell me all the currencies who are in the following figurations :

- TDI partial overbuy + RSI above Signal Line + appearance of Bullish orderblock**
- TDI TOTAL overbuy + RSI above Signal Line + appearance of Bullish orderblock**
- TDI partial overSELL + RSI BELOW Signal Line + appearance of Bearish orderblock**
- TDI total overSELL + RSI BELOW Signal Line + appearance of Bearish orderblock**

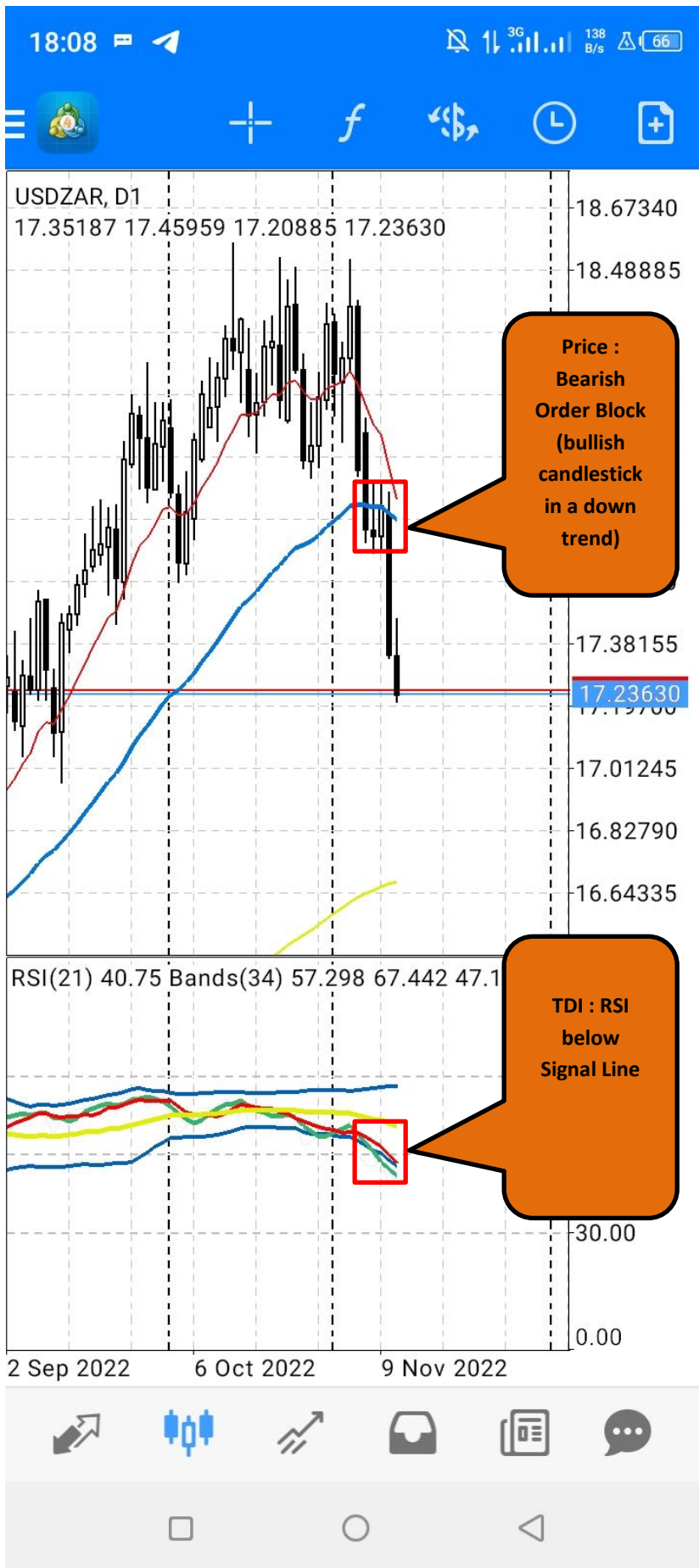
Note : I don't need that the indicator tell me all the currencies who are in the following figurations :

- TDI partial/total overbuy + RSI below Signal Line**
- TDI partial/total overSELL + RSI above Signal Line**



I need to receive signal exactly after bearish candle (order block) close

Case of up trend



I need to receive signal exactly after bearish candle (order block) close

Case of down trend